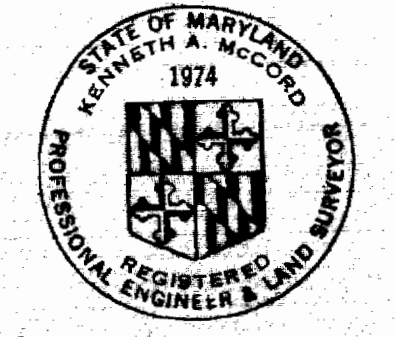


VICINITY MAP  
Scale: 1" = 1/4 Mile

**GENERAL NOTES**

1. Approximate location of existing mains are shown. The Contractor shall take all necessary precautions to protect existing mains and services and maintain uninterrupted supply. Any damage incurred shall be repaired immediately.
2. All pipe elevations shown are invert elevations.
3. The Contractor shall locate existing utilities a minimum of two weeks in advance of construction operations in vicinity of utilities.
4. For all standard details see standards bound in Specifications.
5. All water mains to be C.I.P. or D.I.P. and have a minimum of 3 1/2' cover.
6. Block all fittings with concrete, see standard details bound in Specifications.
7. Clear all utilities by a minimum of 6'; clear all poles by 2'-0" minimum or tunnel as required.
8. The Contractor shall provide a joint in all sewer mains within 2'-0" of exterior manholes walls.

QUANTITIES	
6" Water Main	243'
8" Sewer Main	200'

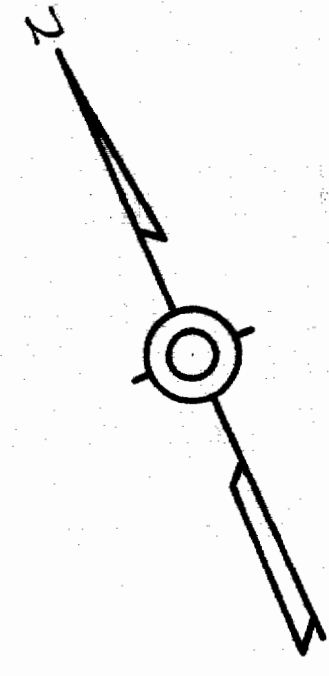
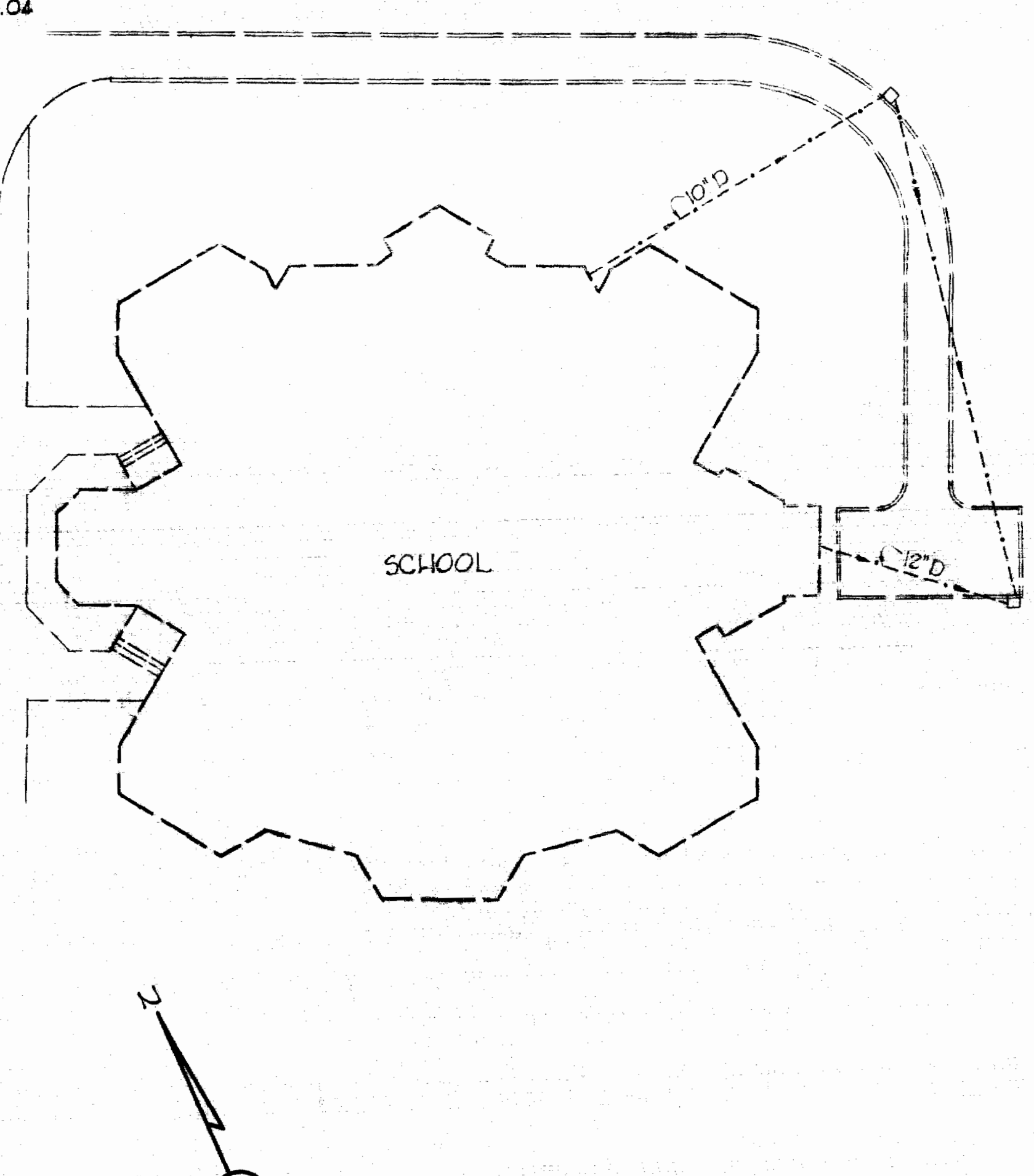


*Kenneth A. McCord*

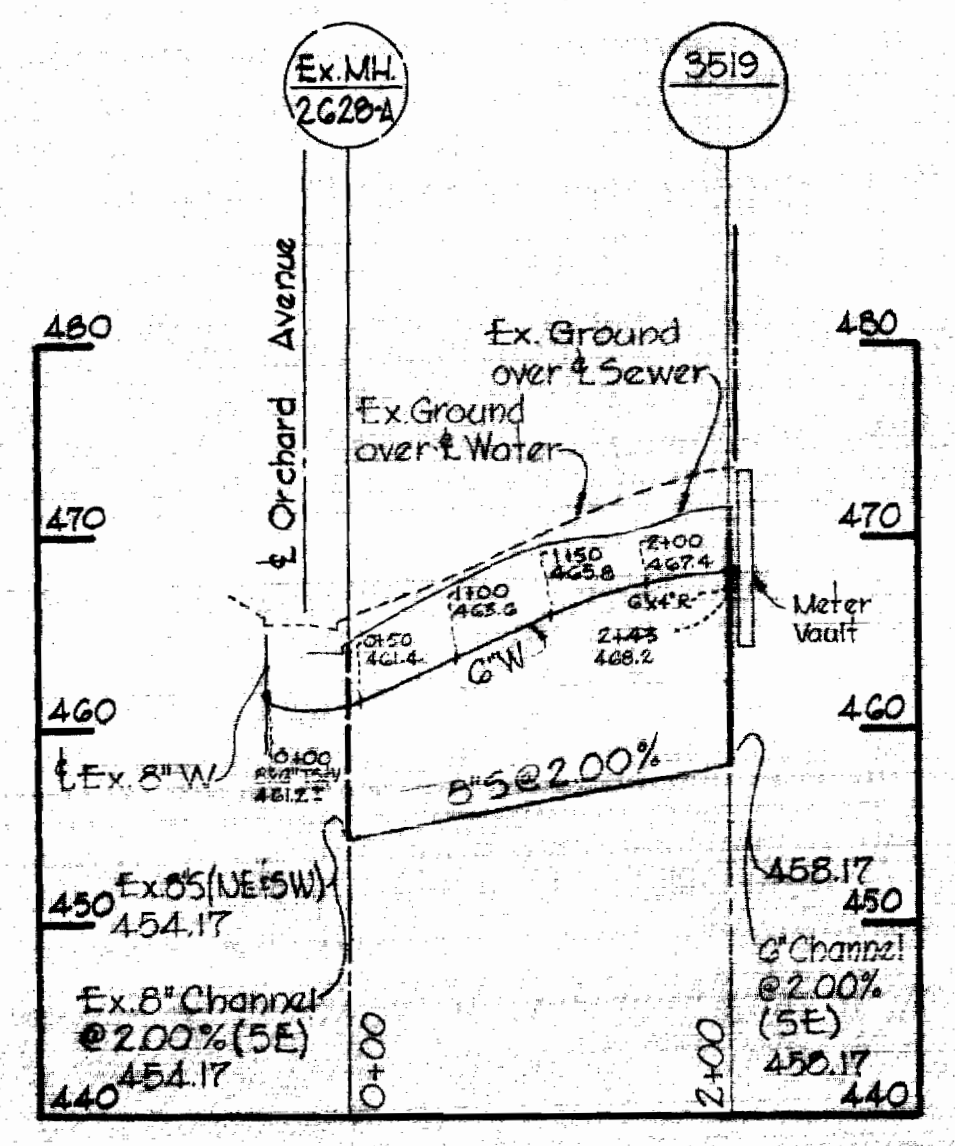
Route 99 Middle School  
Contract No. 282-W&S

DRAWING NO. 1 OF 2	SCALE AS SHOWN
--------------------	----------------

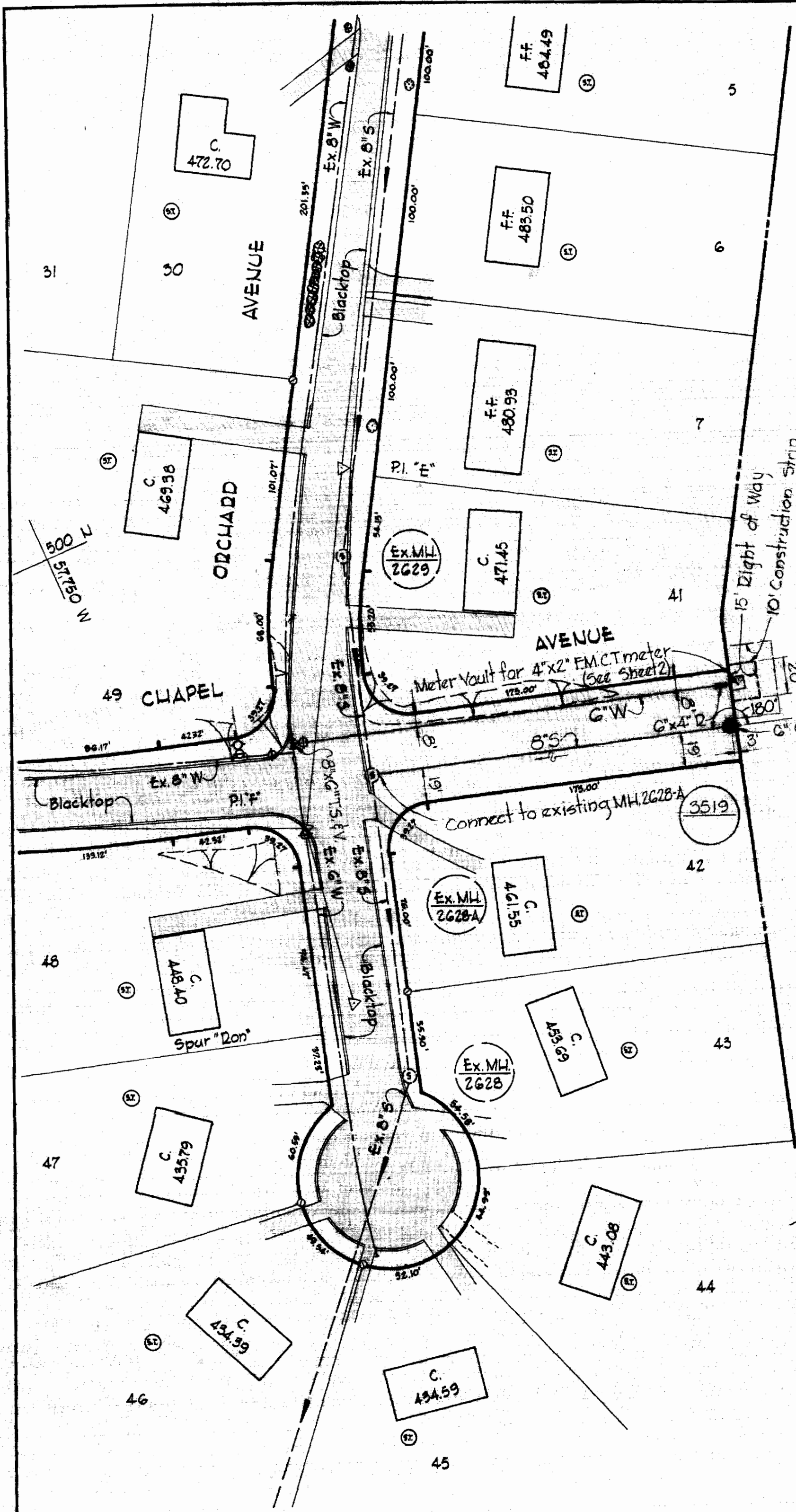
AS BUILT



PLAN  
Scale: 1" = 50'



PROFILE  
H: 1" = 100'  
V: 1" = 10'



W.P. B.M. Z-10 Elev. 435.04  
D.P. spike in base of C.P. pole at intersection of Route 99 and Orchard Avenue.

15' Right of Way  
10' Construction Strip

31  
30  
29  
28  
27  
26  
25  
24  
23  
22  
21  
20  
19  
18  
17  
16  
15  
14  
13  
12  
11  
10  
9  
8  
7  
6  
5

WHITMAN, REARDT & ASSOCIATES  
ENGINEERS  
1304 ST. PAUL ST.  
BALTIMORE, MARYLAND

HOWARD COUNTY METROPOLITAN COMMISSION  
DATE: 10-23-68  
W. O. Pallant  
CHIEF ENGINEER

CONTRACT NO. 282-W&S

PLAN AND PROFILE  
OF  
WATER AND SEWER MAINS

ROUTE 99 MIDDLE SCHOOL  
ELECTION DISTRICT ELLICOTT CITY No. 2

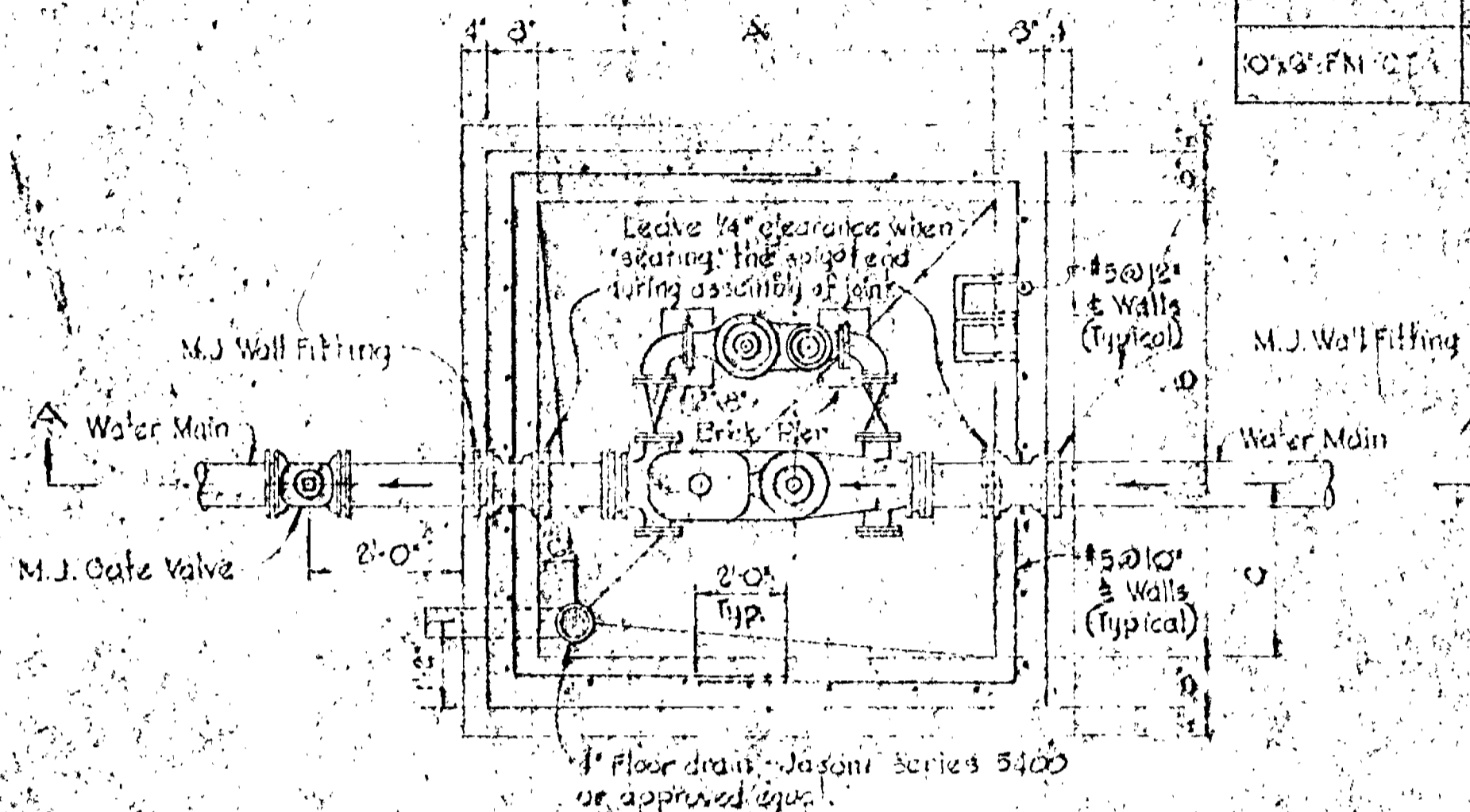
W. O. 6024-2

WS 282 W-5/1

Note: Slope floor of vault to drain.

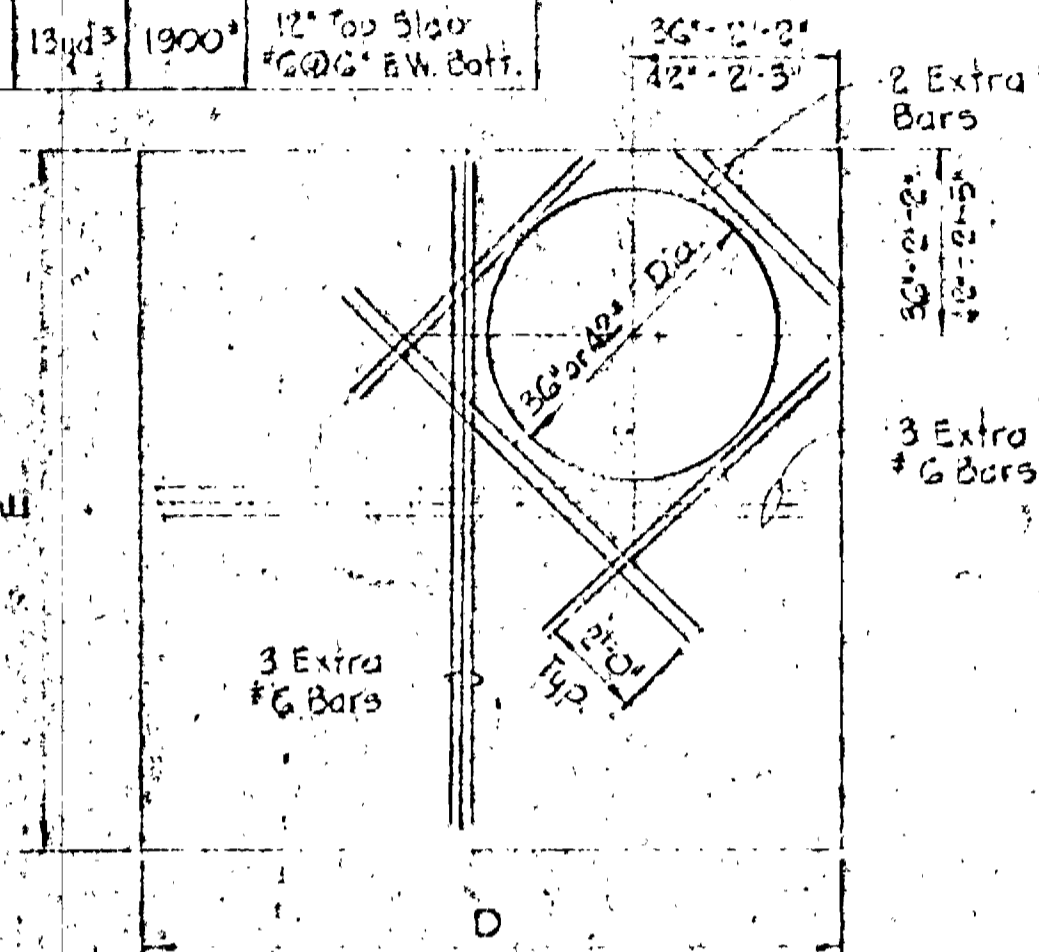
SCHEDULE

Meter Size	Dimensions					Water Mains	Slab Requiring Bars	Slab Reinforcing
	A	B	C	D	E			
4x2 FM-CT	3'-0"	5'-6"	4'-2"	4'-10"	6'-10"	8yd <sup>3</sup>	1100*	10" Top Slab #5@6" E.W. Batt.
6x3 FM-CT	4'-8"	7'-0"	5'-3"	6'-0"	7'-4"	9 1/2yd <sup>3</sup>	1400*	12" Top Slab #6@6" E.W. Batt.
8x4 FM-CT	7'-0"	8'-9"	7'-3"	8'-10"	8'-1"	10 1/2yd <sup>3</sup>	1600*	12" Top Slab #6@6" E.W. Batt.
10x5 FM-CT	8'-0"	11'-9"	8'-3"	10'-2"	9'-1"	13yd <sup>3</sup>	1900*	12" Top Slab #6@6" E.W. Batt.



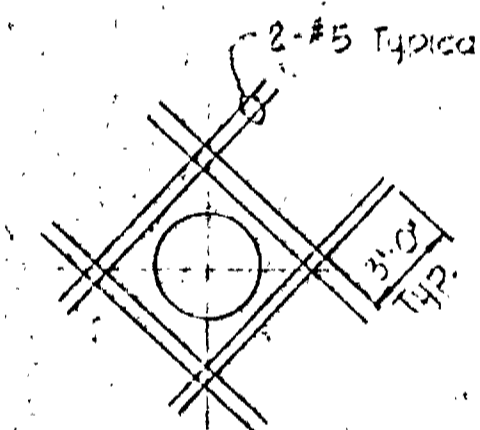
PLAN

NOTE: Meter to be furnished with plain ends and installed with Smith-Blair 912 Plunged coupling adapters. Prior to placing meter, strap valve to ice. See standard detail W-GA.

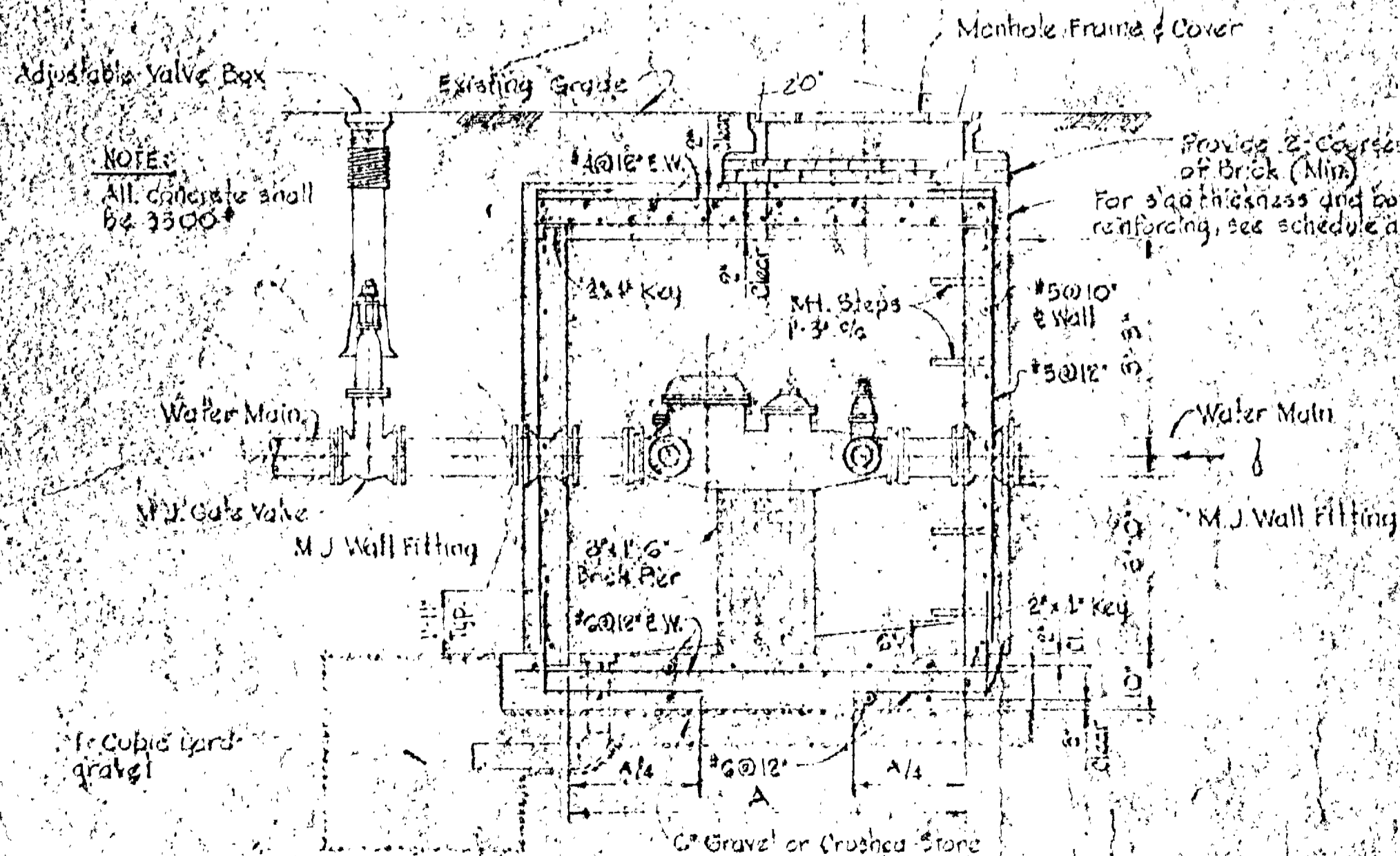


TOP SLAB

4x2' and 6x3' - 36" Dia. MH.  
8x4' and 10x5' - 42" Dia. MH.



TYPICAL REINFORCING AROUND OPENINGS IN WALLS



SECTION 'A-A'

GENERAL CONCRETE NOTES

- All reinforced concrete shall be Class A, 3500 psi at 28 days.
- Reinforcing steel shall be intermediate grade (ASTM A-15) with deformations conforming to ASTM Specification A 305.
- All dowel projections beyond construction joints shall be 30 diameters.
- All bars laps shall be 30 diameters unless otherwise noted.



Kenneth A. McCord

WHITMAN, REQUARDT & ASSOCIATES  
ENGINEERS  
BALTIMORE, MARYLAND

METER VAULT

Scale: 1/2" = 1'-0"

HOWARD COUNTY METROPOLITAN COMMISSION  
BELLICOTT CITY MARYLAND

DATE: OCTOBER 25, 1968

CONTRACT: 282-WFS

SHEET 2 OF 2