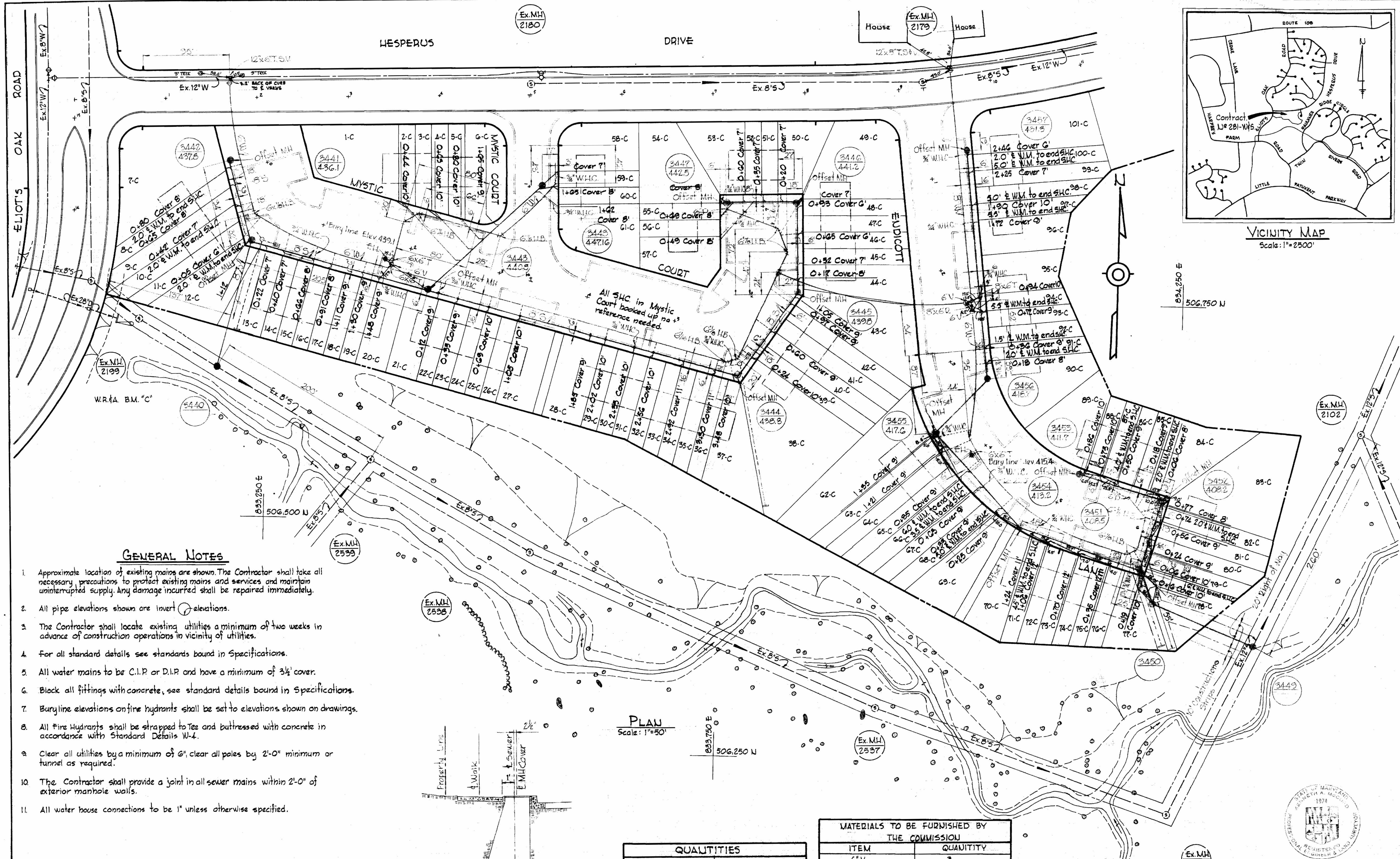
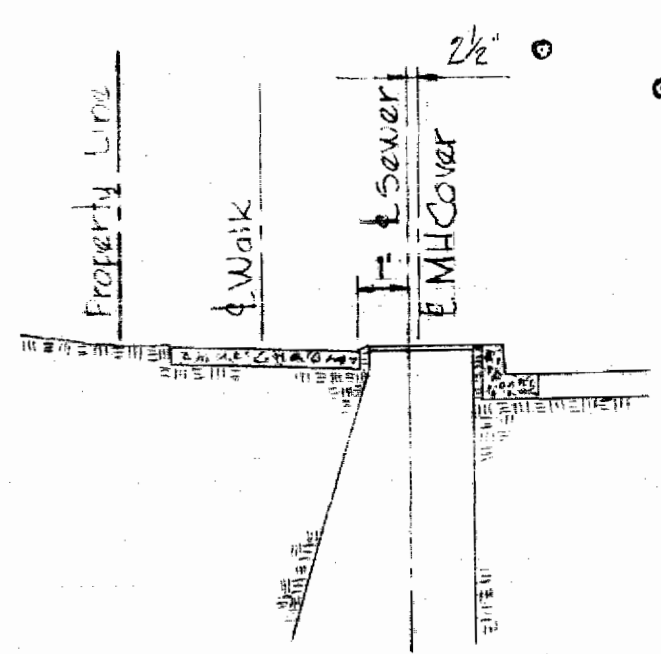


VICINITY MAP
Scale: 1"=2500'



GENERAL NOTES

1. Approximate location of existing mains are shown. The Contractor shall take all necessary precautions to protect existing mains and services and maintain uninterrupted supply. Any damage incurred shall be repaired immediately.
2. All pipe elevations shown are invert elevations.
3. The Contractor shall locate existing utilities a minimum of two weeks in advance of construction operations in vicinity of utilities.
4. For all standard details see standards bound in Specifications.
5. All water mains to be C.I.P. or D.I.P. and have a minimum of 3 1/2' cover.
6. Block all fittings with concrete, see standard details bound in Specifications.
7. Buryline elevations on fire hydrants shall be set to elevations shown on drawings.
8. All Fire Hydrants shall be strapped to Tee and buttressed with concrete in accordance with Standard Details W-4.
9. Clear all utilities by a minimum of 6", clear all poles by 2'-0" minimum or tunnel as required.
10. The Contractor shall provide a joint in all sewer mains within 2'-0" of exterior manhole walls.
11. All water house connections to be 1" unless otherwise specified.



DETAIL OF OFFSET
MANHOLE
Scale: 1"=2'

PLAN
Scale: 1"=50'

QUANTITIES	
ITEM	QUANTITY
8" Sewer Main	2200'
8" Water Main	260'
6" Water Main	1830'
Fire Hydrant	2

MATERIALS TO BE FURNISHED BY THE COMMISSION	
ITEM	QUANTITY
6" V	3
#H	2
12"x8" T.S. fV	1
12"x6" T.S. fV	1



Howard Homes
Contract No. 281-W&S

WHITMAN, REQUARDT & ASSOCIATES
ENGINEERS
1304 ST. PAUL ST.
BALTIMORE, MARYLAND

HOWARD COUNTY METROPOLITAN COMMISSION
DATE 10-10-68
W. O. P. [Signature]
CHIEF ENGINEER

CONTRACT NO. C-281-W&S

PLAN OF
WATER & SEWER MAINS

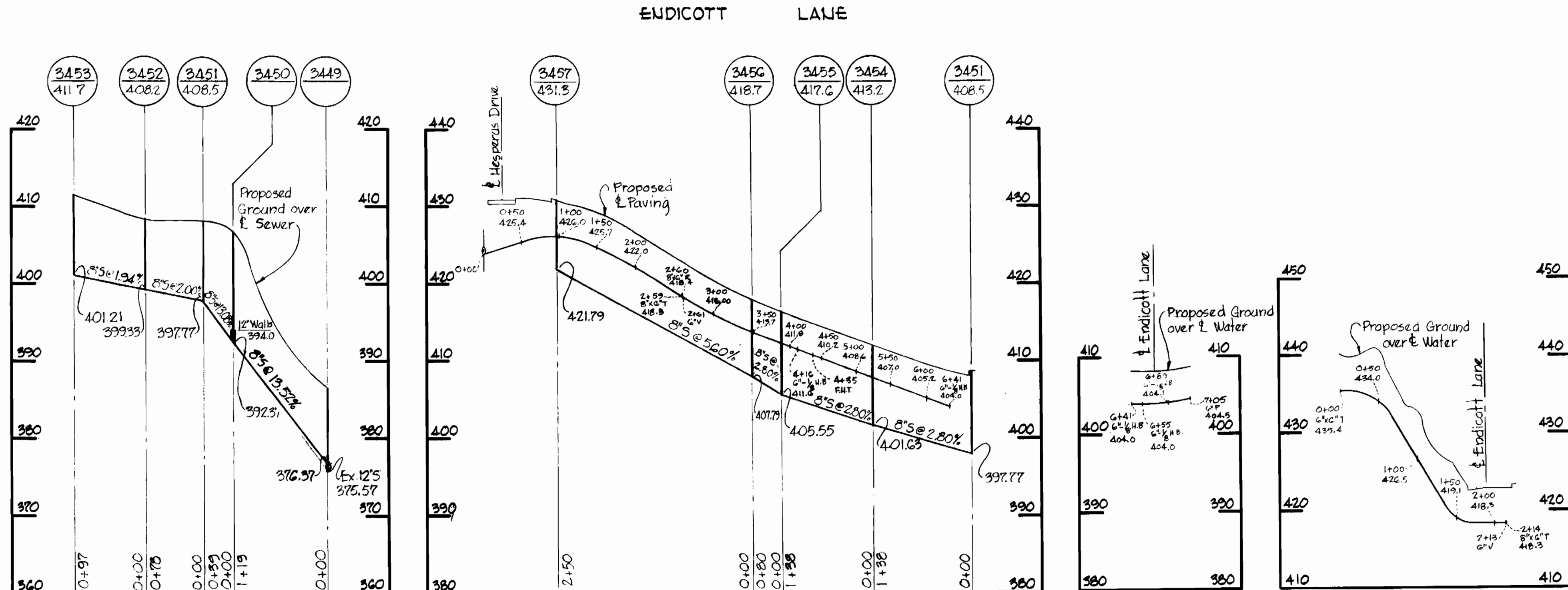
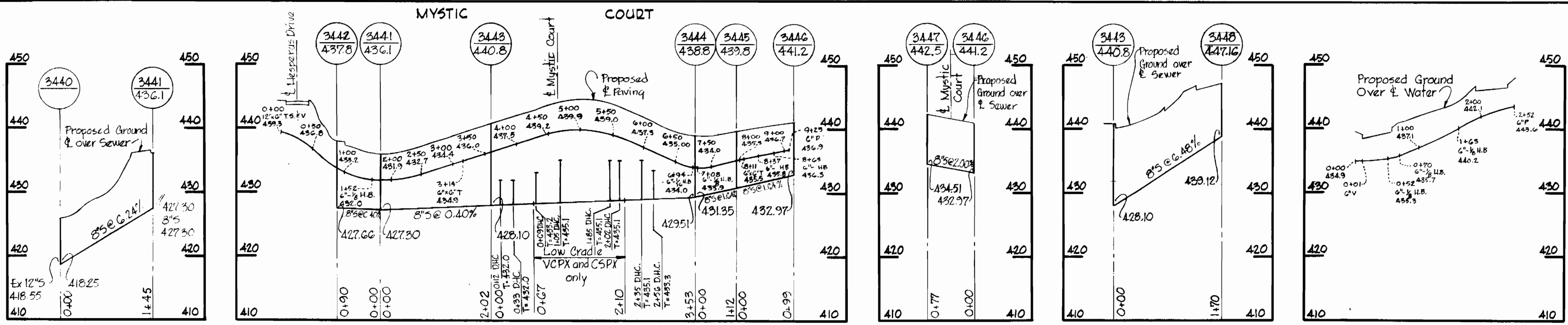
COLUMBIA
VILLAGE OF HARPER'S CHOICE
ELECTION DISTRICT CLARKSVILLE No. 5

DRAWING NO. 1 OF 2
SCALE AS SHOWN
606,477

W. O. 6023

DECEMBER 31, 1968
AS BUILT

WS 281 W-S 1



ALL SEWER PIPE AC CLASS 2400

Note:
Brick manholes shall have 12" and 16" Walls as called for on Profile



Howard Homes

Howard Homes
Contract C-281-W&S

WHITMAN, REQUARDT & ASSOCIATES ENGINEERS 1304 ST. PAUL ST. BALTIMORE, MARYLAND	HOWARD COUNTY METROPOLITAN COMMISSION DATE 10-10-68 <i>W. O. Elliott</i> CHIEF ENGINEER	CONTRACT NO. C-281-W&S	PROFILES OF WATER & SEWER MAINS	COLUMBIA VILLAGE OF HARPER'S CHOICE ELECTION DISTRICT CLARKSVILLE No.5	DRAWING NO. 2 OF 2 SCALE H:1"=100' V:1"=10' DECEMBER 31, 1968
-----------------------------------------------------------------------------------------	--------------------------------------------------------------------------------------------------	------------------------	------------------------------------	------------------------------------------------------------------------------	---------------------------------------------------------------------