

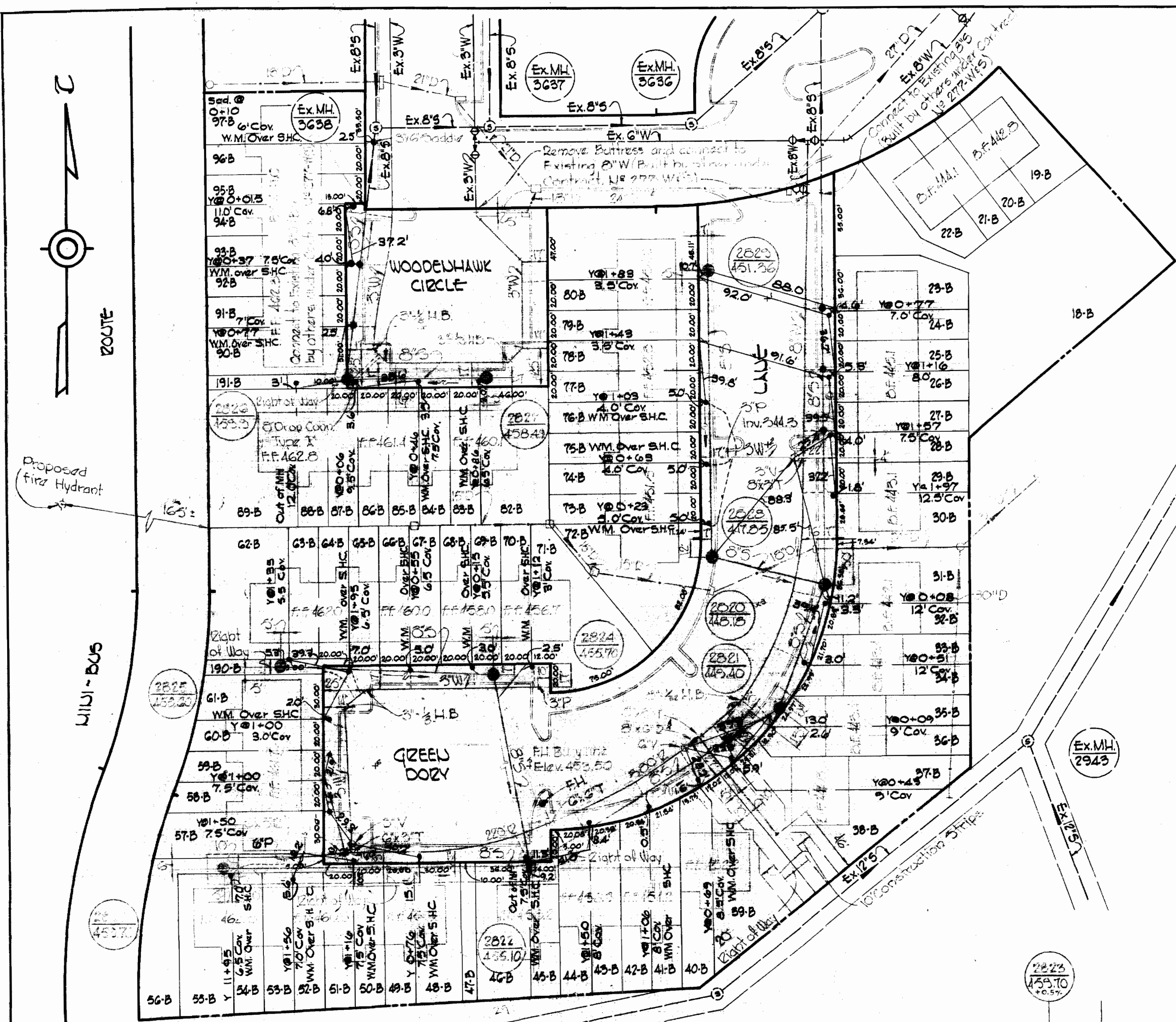
VICINITY MAP
Scale: 1"=2500'

MATERIALS TO BE FURNISHED BY HOWARD COUNTY	
5" Valves	2
6" Valves	1
F.H.	1

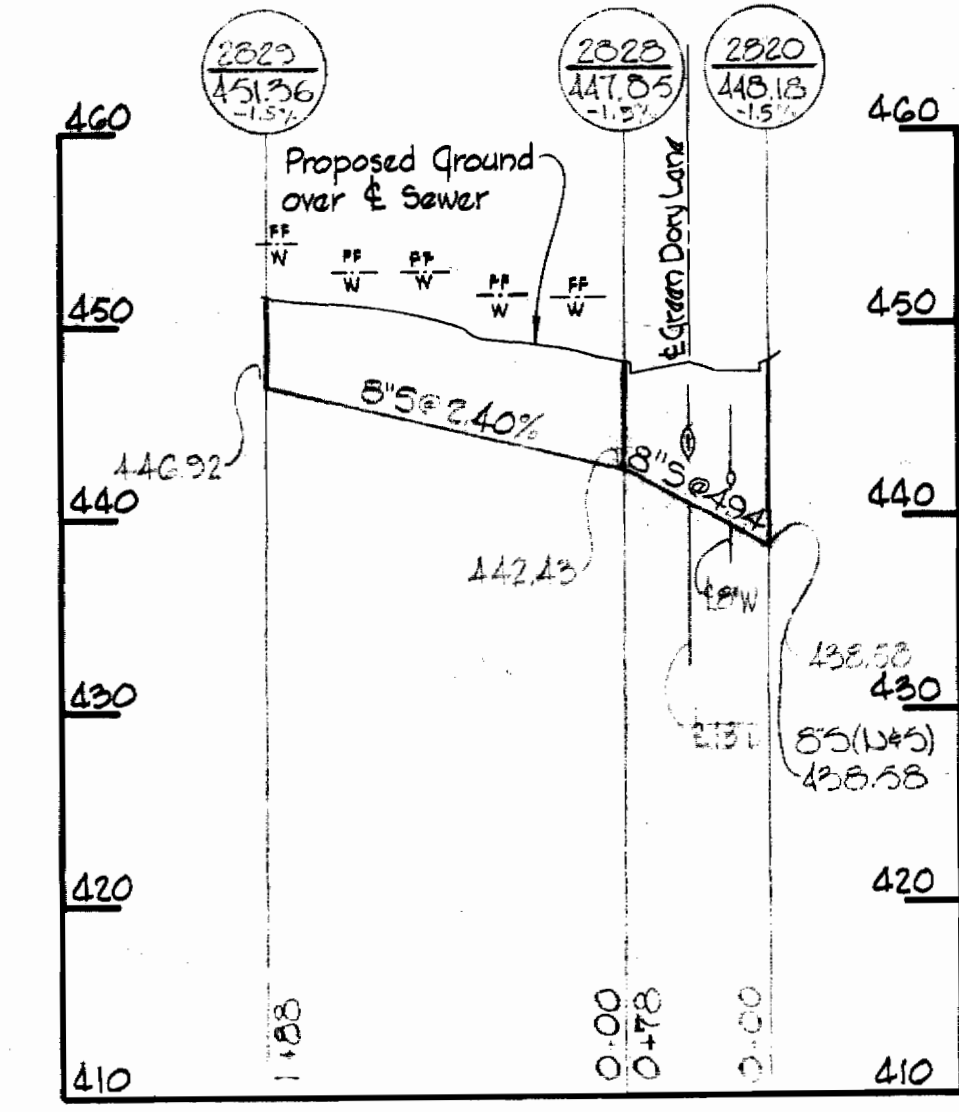
QUANTITIES	
5" Water	850'
6" Water	260'
8" Water	230'
6" Sewer	1480'

GENERAL NOTES

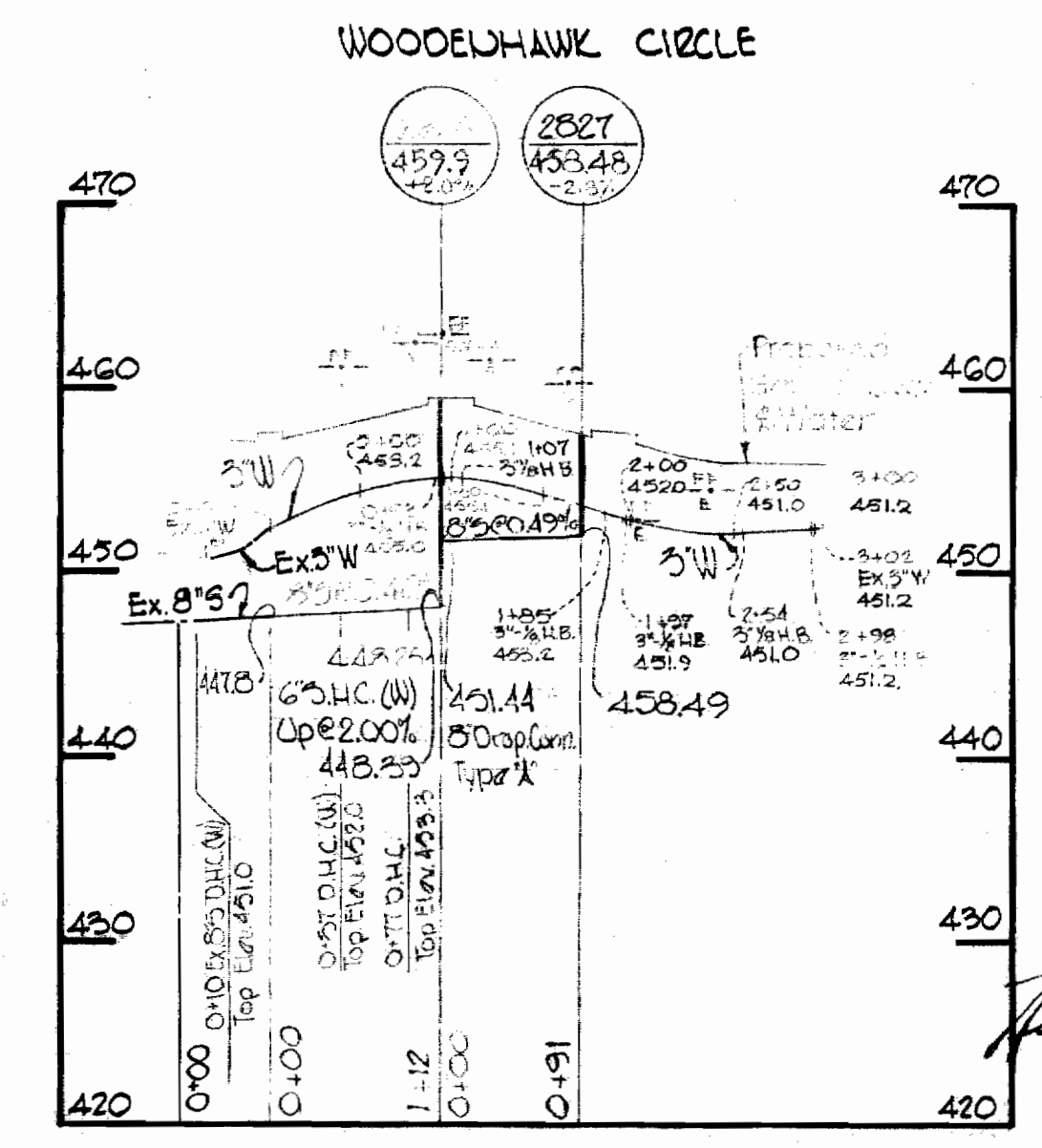
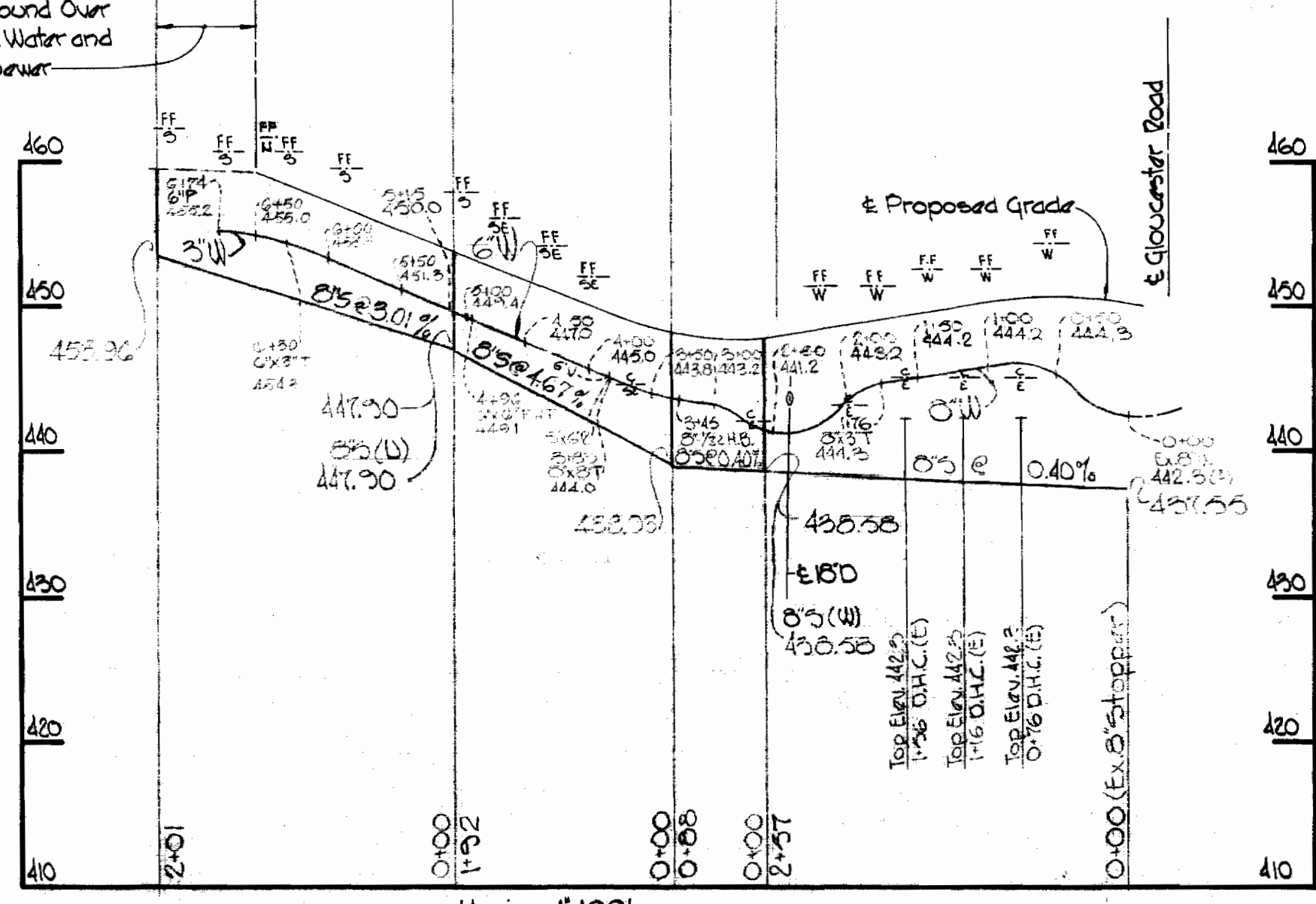
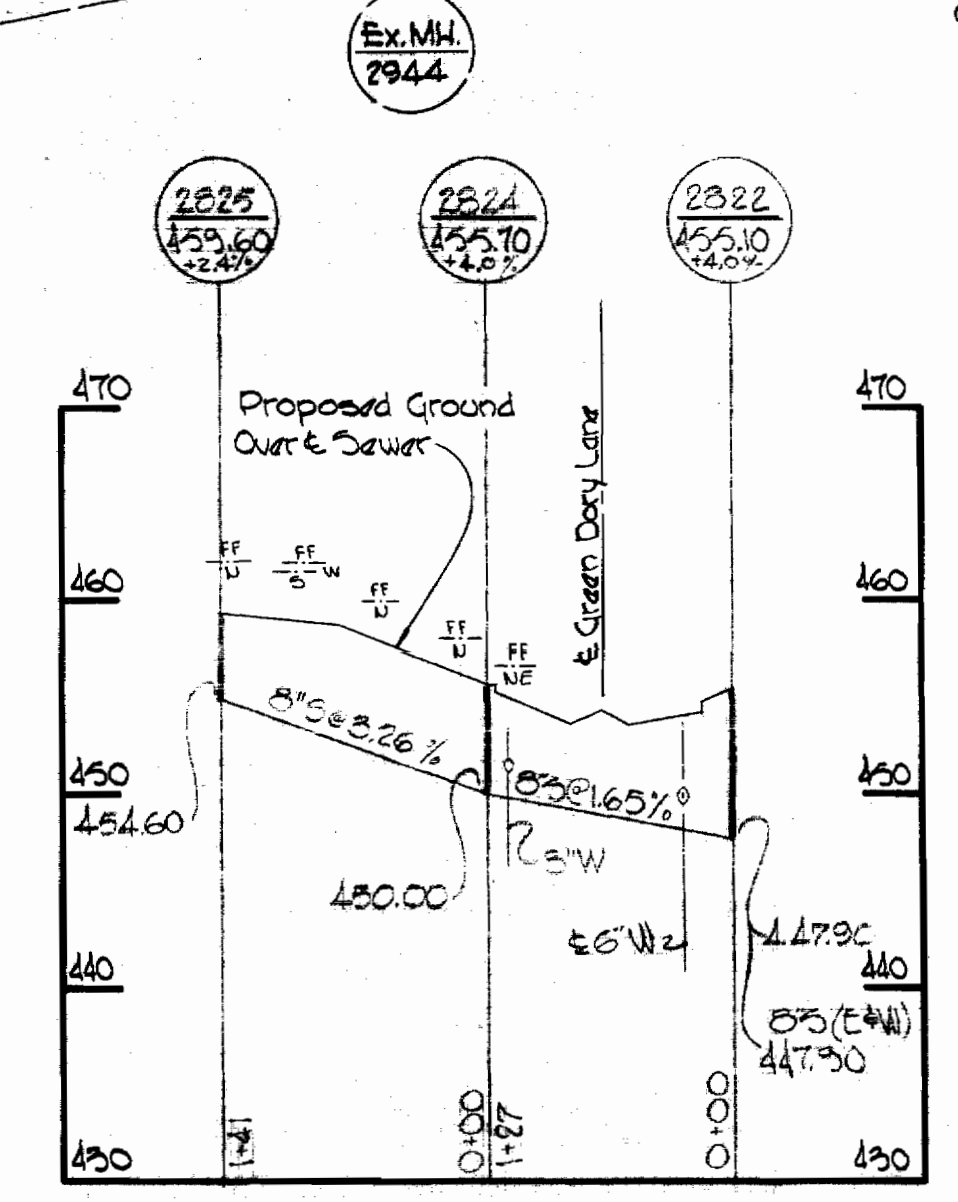
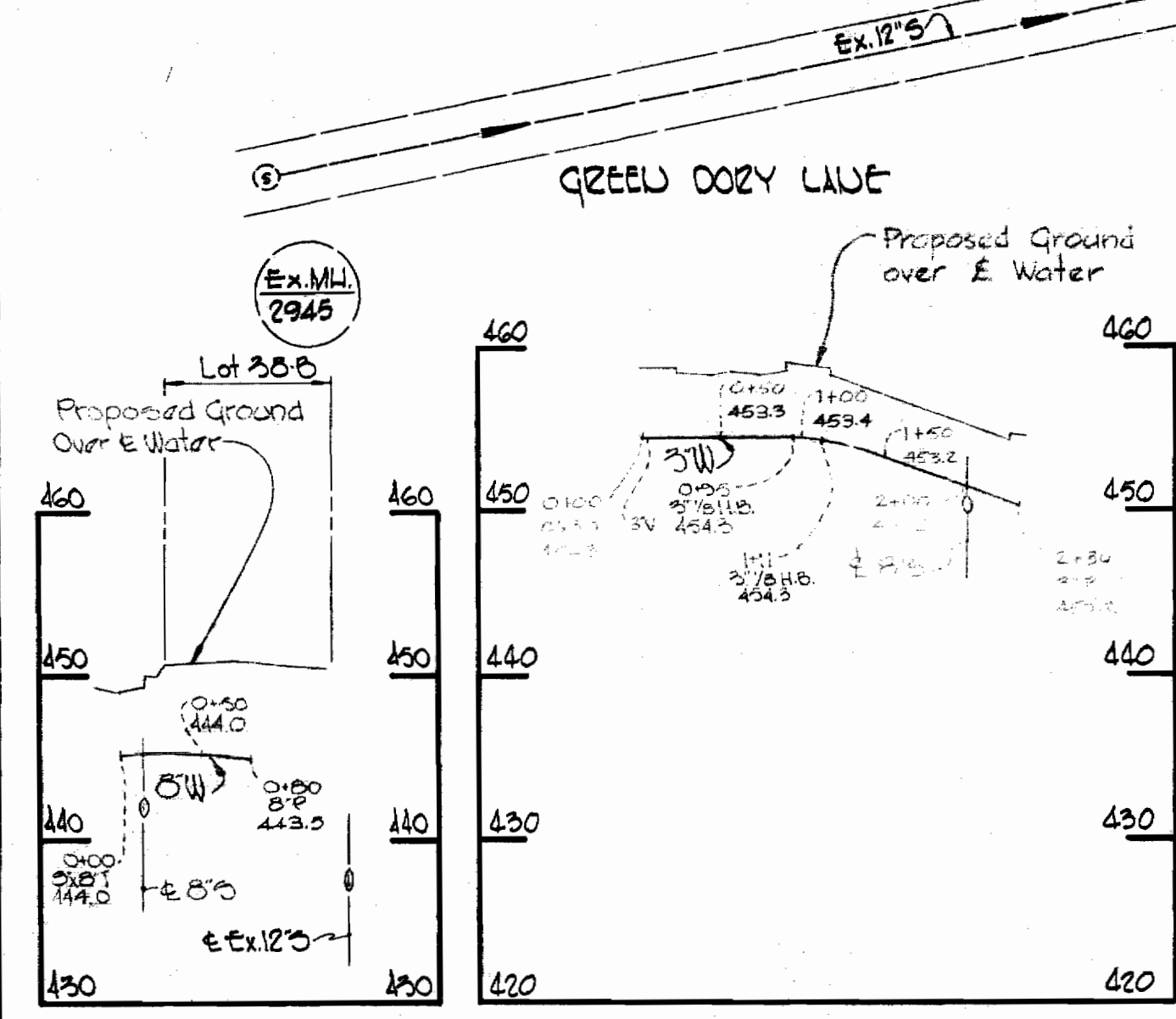
1. Approximate location of existing mains are shown. The Contractor shall take all necessary precautions to protect existing mains and services and maintain uninterrupted supply. Any damage incurred shall be repaired immediately.
2. All pipe elevations shown are invert elevations.
3. The Contractor shall locate existing utilities a minimum of two weeks in advance of construction operations in vicinity of utilities.
4. For all standard details see standards bound in Specifications.
5. All water mains to be C.I.P. or D.I.P. and have a minimum of 3 1/2' cover.
6. Block all fittings with concrete, see standard details bound in Specifications.
7. Bury line elevations on fire hydrants shall be set to elevations shown on drawings.
8. All Fire Hydrants shall be strapped to Tee and buttressed with concrete in accordance with Standard Detail W-4.
9. Clear all utilities by a minimum of 6", clear all poles by 2'-0" minimum or tunnel as required.
10. The Contractor shall provide a joint in all sewer mains within 20' of exterior manhole walls.
11. All sewer mains shall be C5PX, VCPX or ACP Class 2400.
12. All water house connections shall be 1" unless otherwise noted.



PLAN
Scale: 1"=50'



GREEN DORY LAKE



PROFILES - Scale: Horiz: 1"=100'
Vert: 1"=10'



Kenneth A. McLeod

Strathmore II
Contract C-278-W85

WHITMAN, REARDT & ASSOCIATES
ENGINEERS
1304 ST. PAUL ST.
BALTIMORE, MARYLAND

HOWARD COUNTY METROPOLITAN COMMISSION
3-26-69
DATE

W. O. Falbert
CHIEF ENGINEER

CONTRACT NO. C-278-W85

PLAN AND PROFILE
OF
WATER AND SEWER MAINS

COLUMBIA
VILLAGE OF HARPER'S CHOICE
ELECTION DISTRICT CLARKSVILLE No.5

DRAWING NO. 1
NO. 1
SCALE AS SHOWN
504-476

278-WS/1