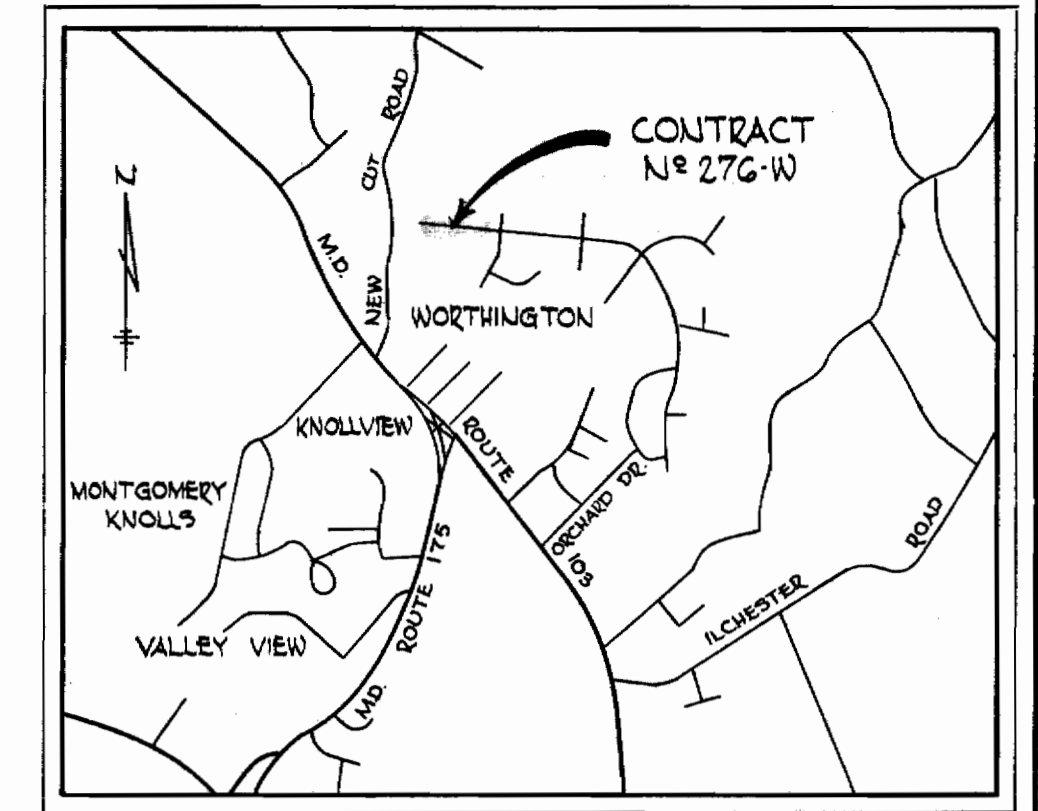


W&A, B.M. * W-10 Elev. 472.64
 Cut nail and tin top in G&E pole #347434
 NE side Roundhill Road 200± NW of
 intersection of Nottingham Way.

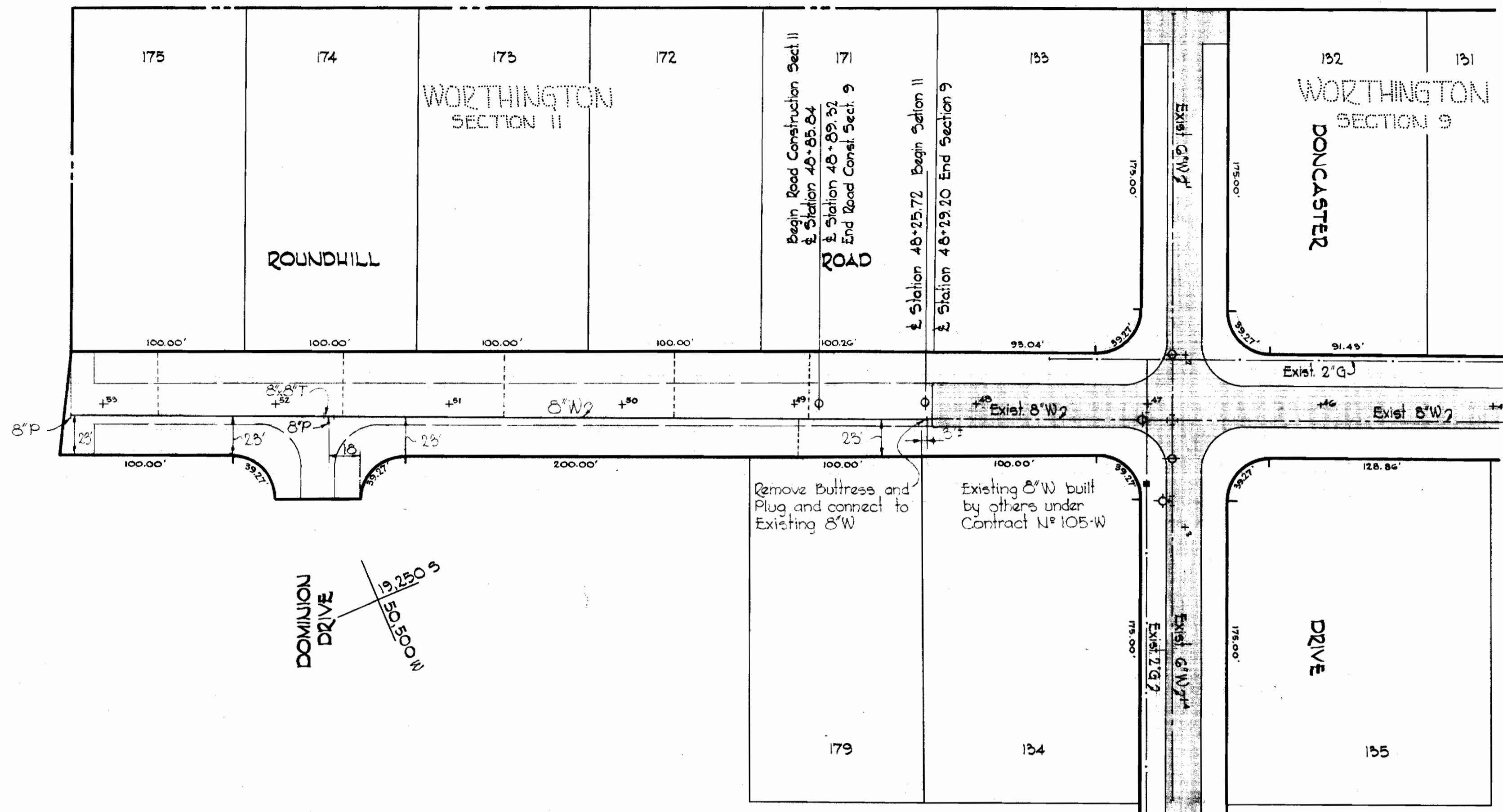


VICINITY MAP

Scale: 1" = 1/2 mile

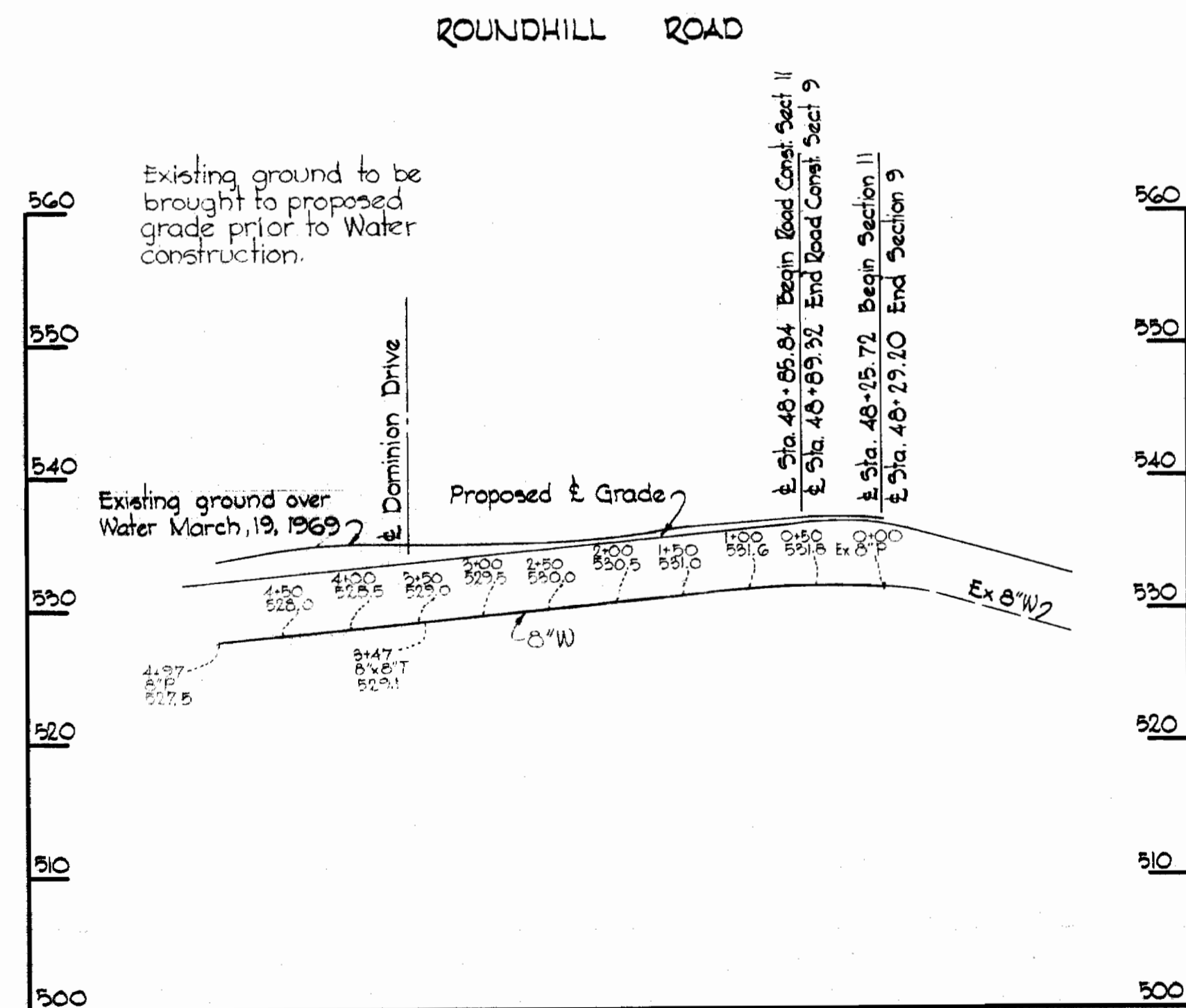
GENERAL NOTES

1. Approximate location of existing mains are shown. The Contractor shall take all necessary precautions to protect existing mains and services and maintain uninterrupted supply. Any damage incurred shall be repaired immediately.
2. All pipe elevations shown are invert \odot elevations.
3. The Contractor shall locate existing utilities a minimum of two weeks in advance of construction operations in vicinity of utilities.
4. For all standard details see Standards bound in Specifications.
5. All water mains to be C.I.P. or D.I.P. and have a minimum of 3½' cover.
6. Block all fittings with concrete, see standard details bound in Specifications.
7. Clear all utilities by a minimum of 6". Clear all poles by 2'-0" minimum or tunnel as required.



PLAN

Scale: 1" = 50'



PROFILE

Scale: H: 1" = 100'
 V: 1" = 10'

QUANTITY	
ITEM	QUANTITY
8" Water Mains	500 LF



Kenneth A. McCord

Worthington Section II
 Contract No. 276-W

WHITMAN, REQUARDT & ASSOCIATES
 ENGINEERS
 1304 ST. PAUL ST.
 BALTIMORE, MARYLAND

HOWARD COUNTY METROPOLITAN COMMISSION
 DATE: 8-26-69
 W. O. P. [Signature]
 CHIEF ENGINEER

CONTRACT NO. 276-W

PLAN AND PROFILE OF
 WATER MAINS

ELLCOTT CITY SUB-DISTRICT

DRAWING NO. 1 OF 1
 SCALE AS SHOWN

FB#2226
 15 JUN 64

BUILT BY H.C. AS BUILT