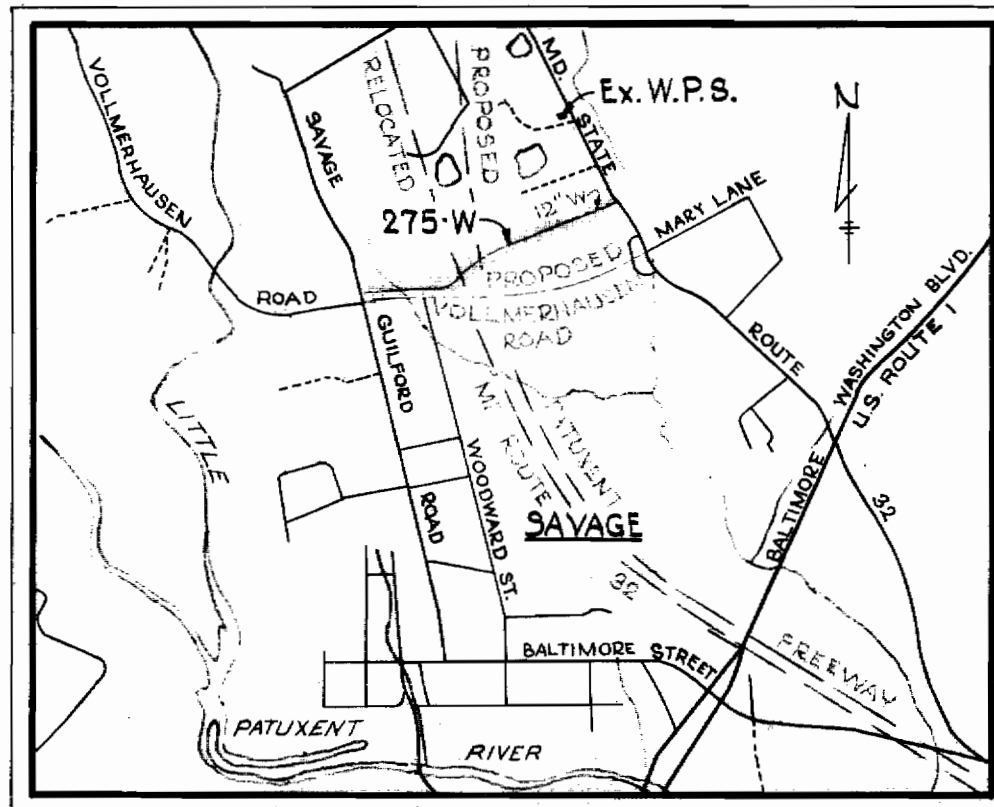


# GENERAL NOTES

1. Approximate location of existing mains are shown. The Contractor shall take all necessary precautions to protect existing mains and services and maintain uninterrupted supply. Any damage incurred shall be repaired immediately.
2. All pipe elevations shown are invert elevations.
3. The Contractor shall locate existing utilities a minimum of two weeks in advance of construction operations in vicinity of utilities.
4. For all standard details see standards bound in Specifications.
5. All water mains to be C.I.P. or D.I.P. and have a minimum of 3 1/2' cover.
6. Block all fittings with concrete, see standard details bound in Specifications.
7. Bury line elevations on fire hydrants shall be set the same as edge of existing paving, top of curb, or as directed by the Engineer in the field.
8. All Fire Hydrants shall be strapped to Tee and buttressed with concrete in accordance with Standard Details W-6A, 6B, 6C, and 6D.
9. Clear all utilities by a minimum of 6', clear all poles by 2'-0" minimum or tunnel as required.
10. Cost of strapping Fire Hydrants and Valves to tees to be included in the unit price bid for furnishing and laying of water mains.
11. Elevations and Coordinates are based upon the Maryland State Systems.
12. Time of connection to existing 8" 12" W to be as directed by Howard County Department of Public Works. It may be at any time, on any day or night.



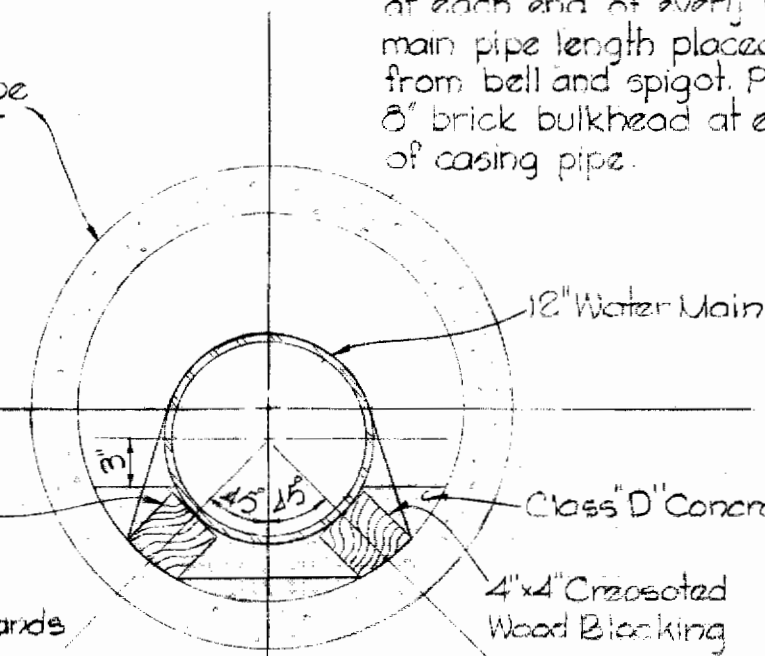
## VICINITY MAP

Scale: 1" = 2,000'

### NOTE:

Crescoted wood blocking- 18" long shall be provided at each end of every water main pipe length placed 12" from bell and spigot. Provide 8" brick bulkhead at ends of casing pipe.

24" Casing Pipe  
RCP Class 157

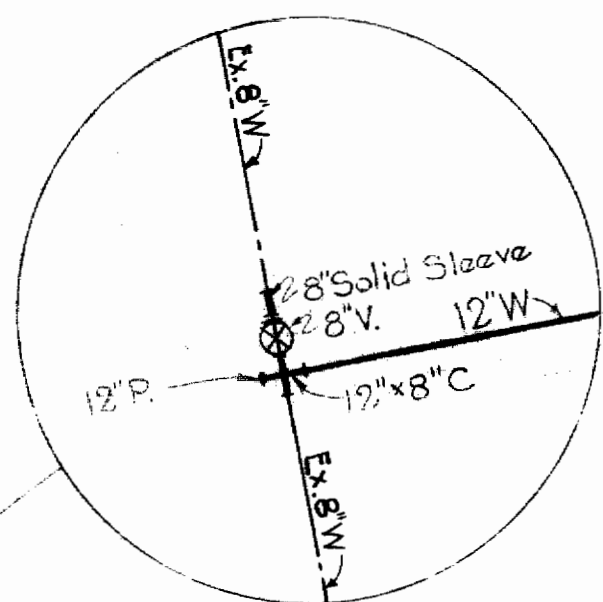


## DETAIL 24" CASING PIPE

Scale: 1" = 1'-0"

QUANTITIES	
12" Water Main	2910' L.H.
Fire Hydrants	1
Air Release MH	1

Curve #5  
 $\Delta = 22^\circ 59' 01''$   
 $D = 17^\circ 37' 41''$   
 $R = 325.00'$   
 $T = 66.07'$   
 $L = 130.37'$

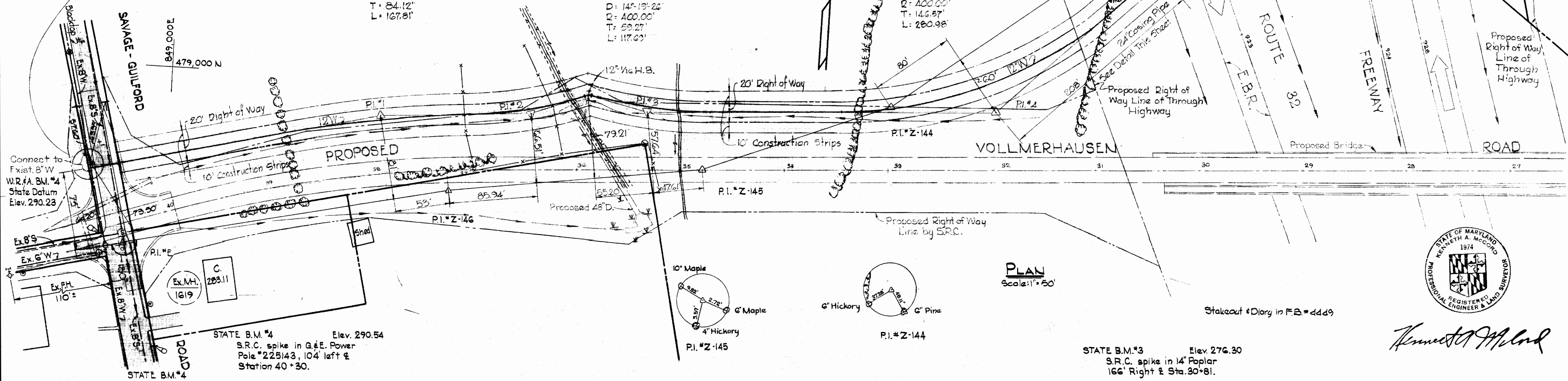


Property of DAVID J. and DORA F. GITOMER

Curve #1  
 $\Delta = 10^\circ 07' 12''$   
 $D = 6^\circ 01' 52''$   
 $R = 950.00'$   
 $T = 84.12'$   
 $L = 167.81'$

Curve #3  
 $\Delta = 16^\circ 51' 28''$   
 $D = 14^\circ 19' 22''$   
 $R = 400.00'$   
 $T = 59.27'$   
 $L = 117.23'$

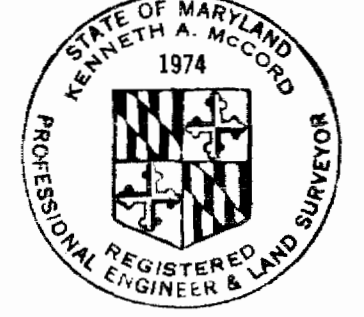
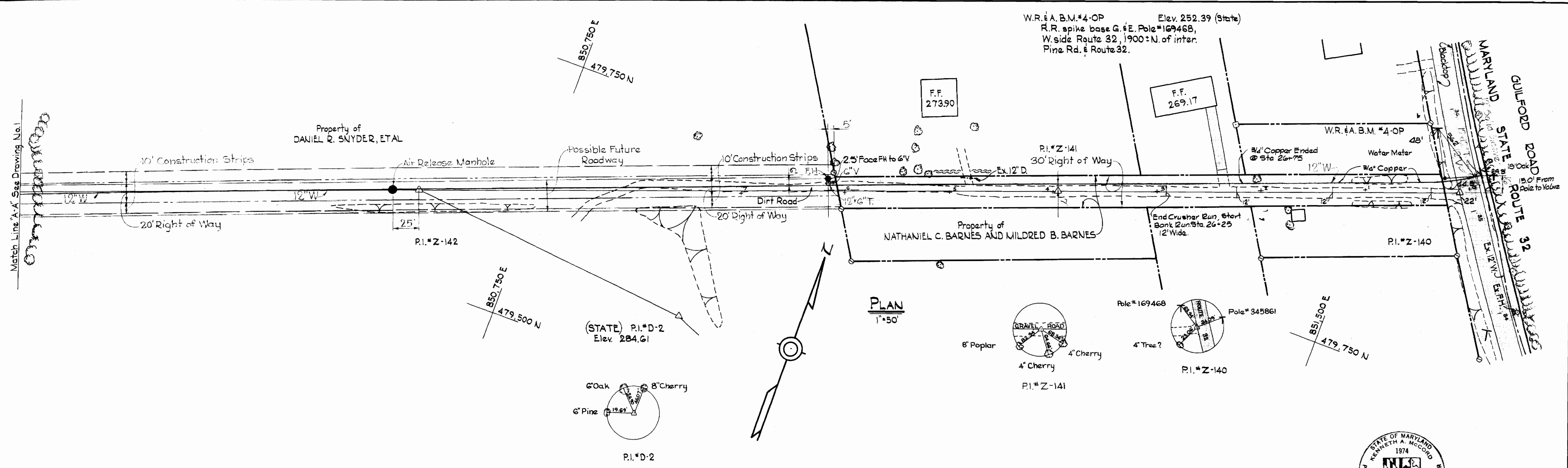
Curve #4  
 $\Delta = 40^\circ 14' 53''$   
 $D = 14^\circ 19' 26''$   
 $R = 400.00'$   
 $T = 146.87'$   
 $L = 280.98'$



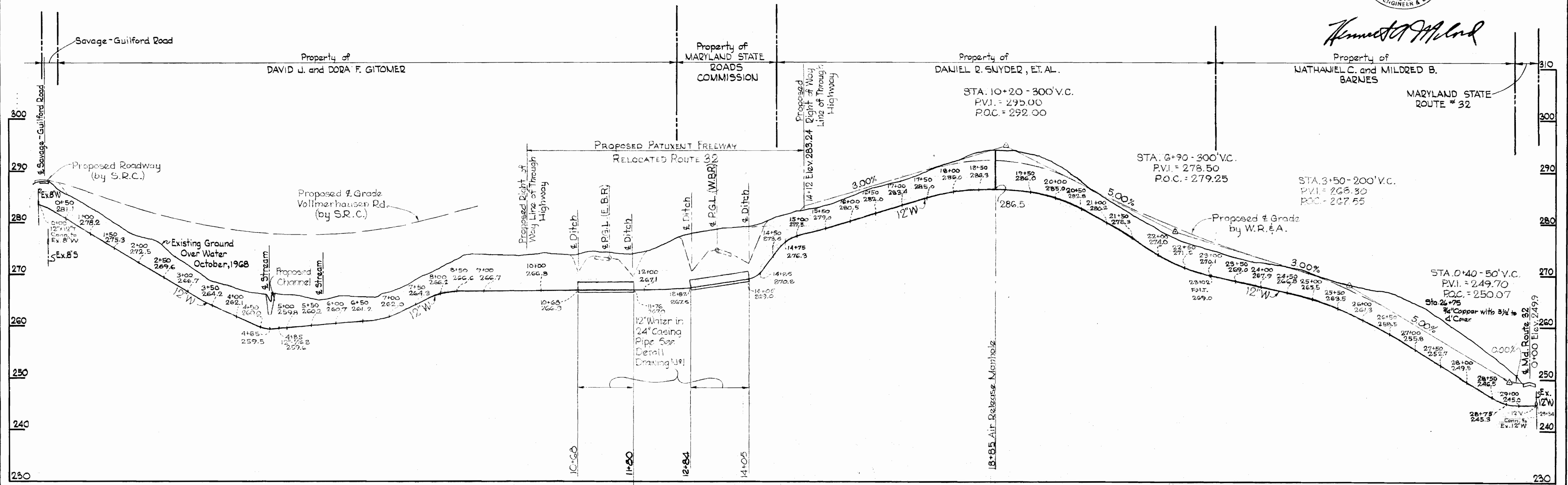
*Kenneth A. McCord*

WHITMAN, REQUARDT & ASSOCIATES ENGINEERS 1304 ST. PAUL ST. BALTIMORE, MARYLAND	HOWARD COUNTY METROPOLITAN COMMISSION JUNE 30, 1969 DATE	CONTRACT NO. 275-W	PLAN OF WATER MAINS	ELECTION DISTRICT GUILFORD No.6	DRAWING NO. 1	SCALE AS SHOWN
					OF 2	

275-W/2



*Kenneth A. McCord*



**PROFILE**  
H:V = 1"=100'  
Scale: V: 1"=10'

WHITMAN, REQUARDT & ASSOCIATES ENGINEERS 1304 ST. PAUL ST.	HOWARD COUNTY METROPOLITAN COMMISSION DATE: JUNE 30, 1969 <i>W.O. Pickett</i> CHIEF ENGINEER	CONTRACT NO. 275-W	PLAN AND PROFILE OF WATER MAINS	ELECTION DISTRICT GUILFORD No. 6	DRAWING NO. 2	SCALE AS SHOWN
					CONTRACT # 275-W	478-48C