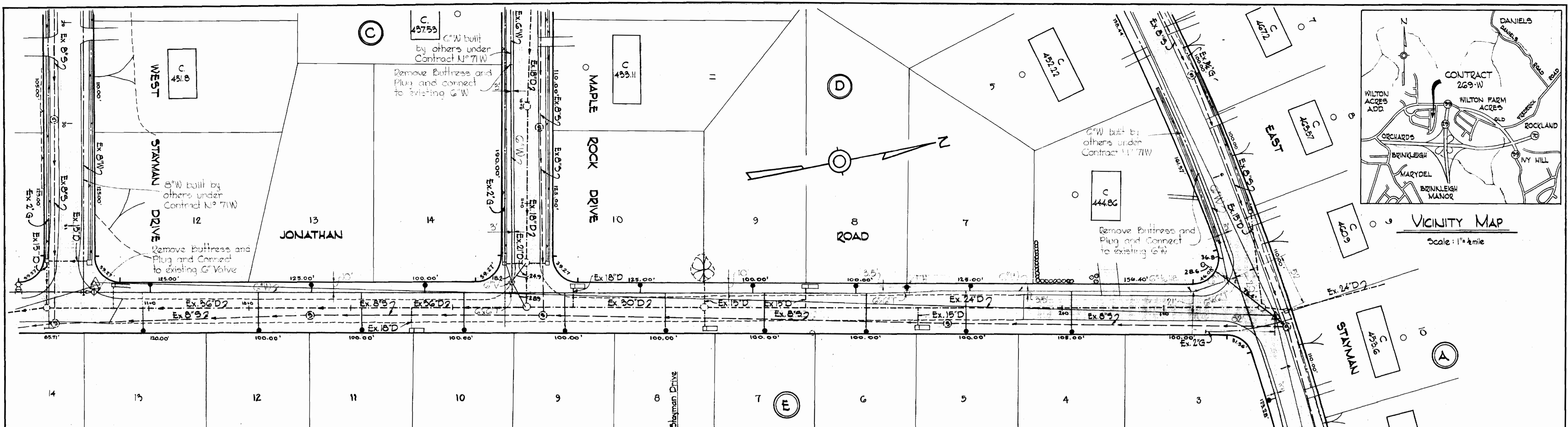
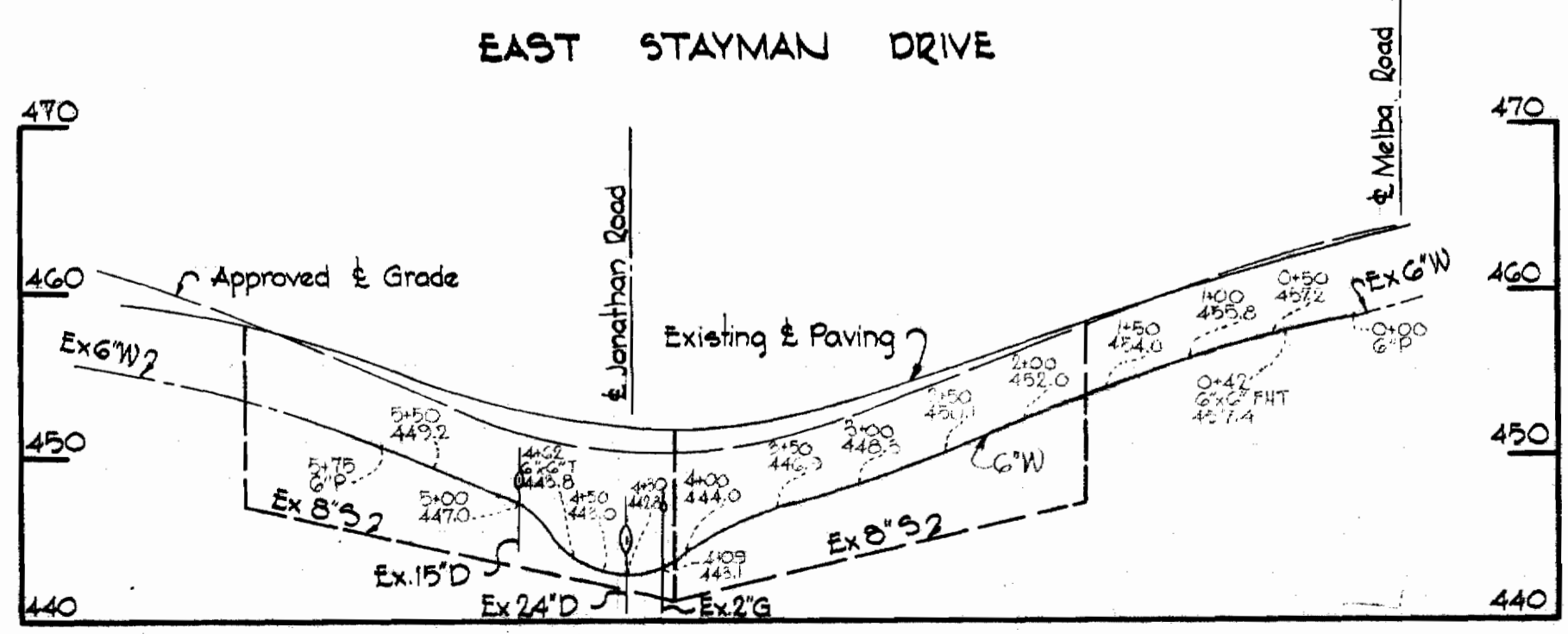
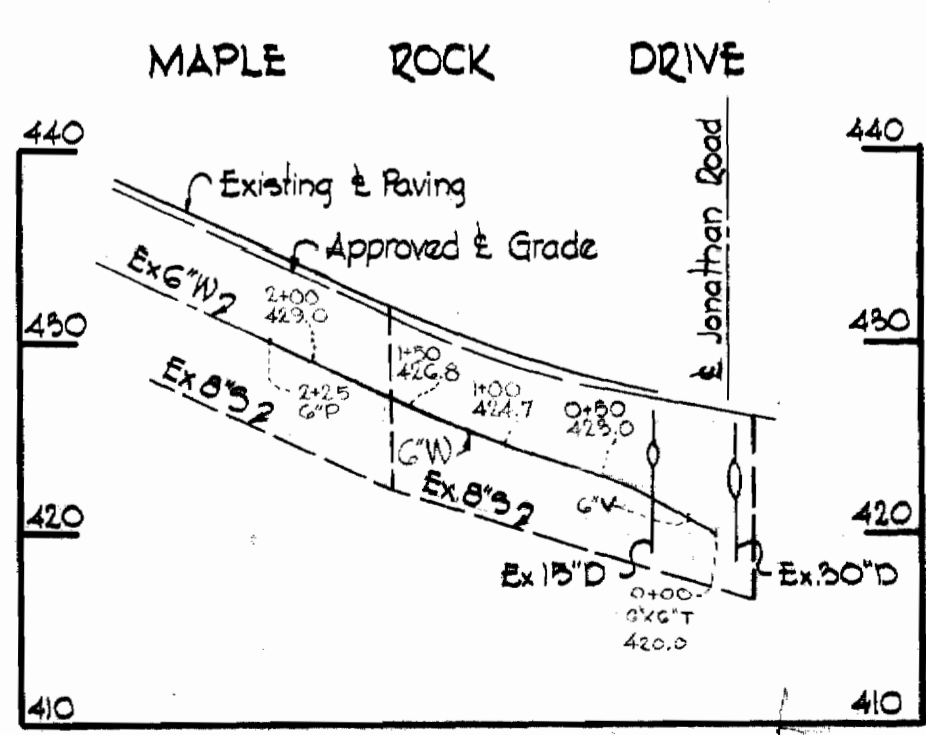
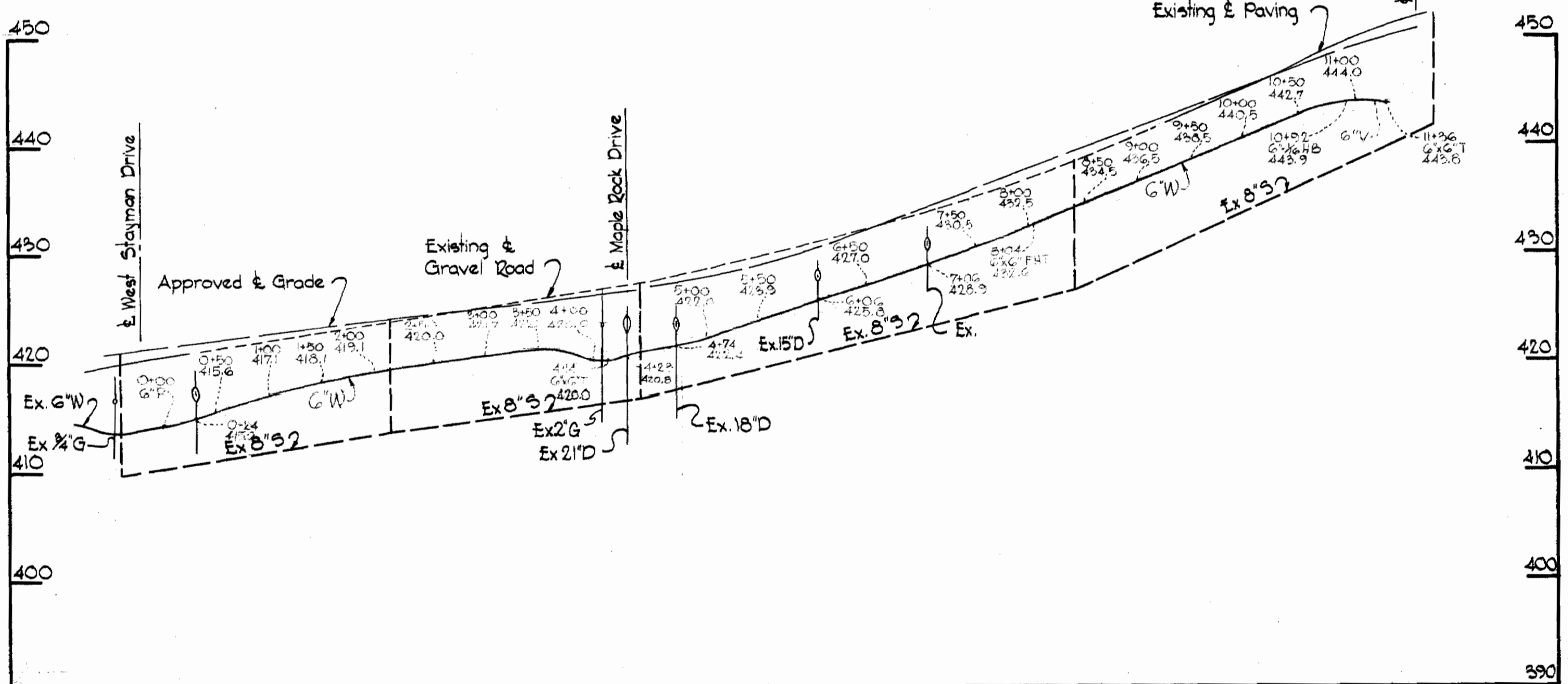


VICINITY MAP
Scale: 1" = 1/4 mile

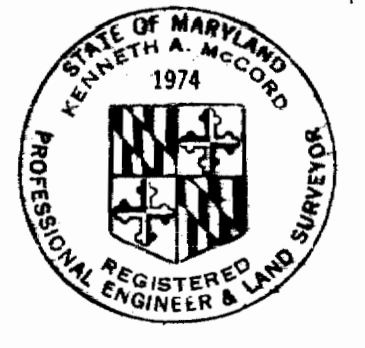
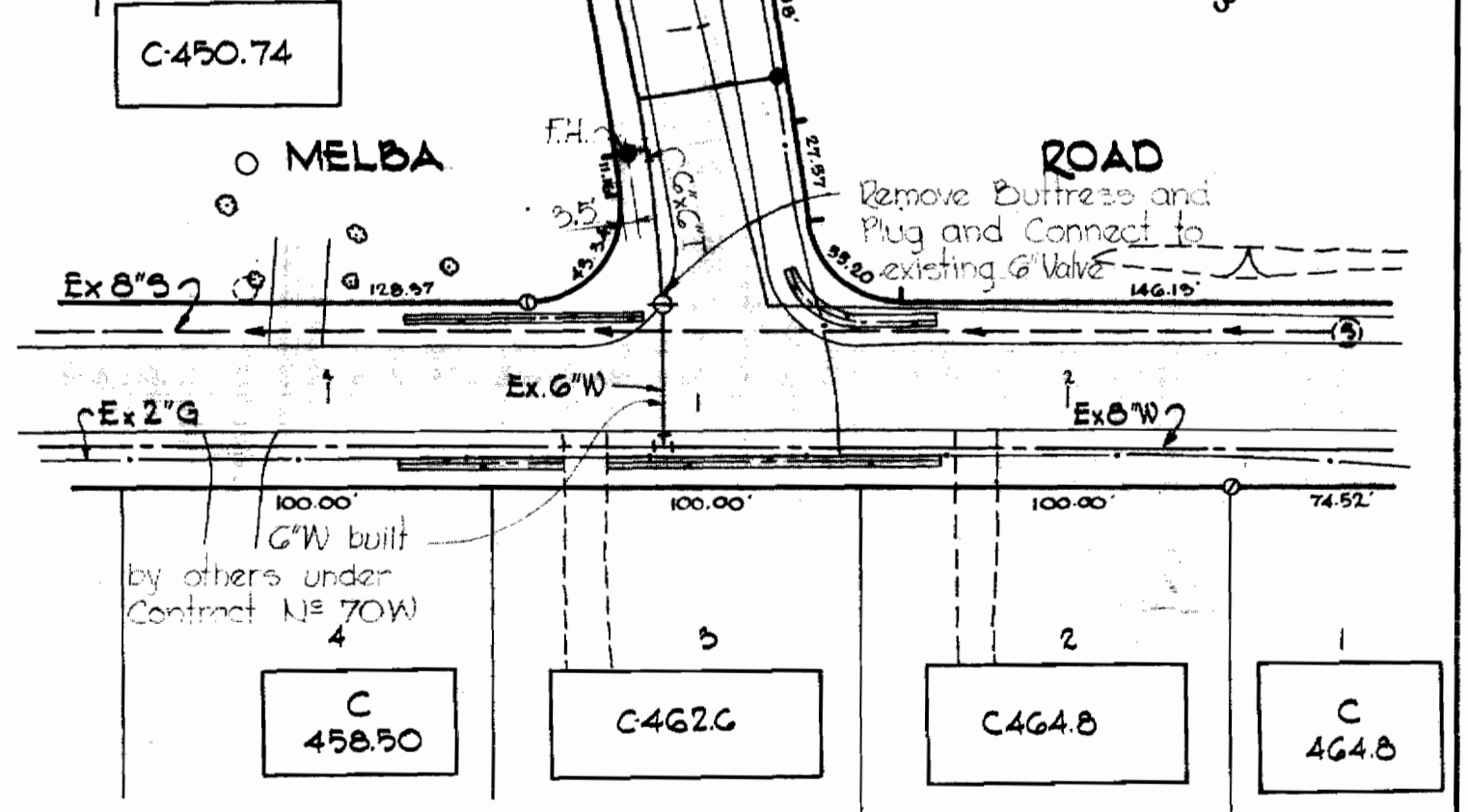


GENERAL NOTES

1. Approximate locations of existing mains are shown. The Contractor shall take all necessary precautions to protect the existing mains and maintain uninterrupted supply. Any damage incurred shall be repaired immediately.
2. All pipe elevations are invert Δ elevations.
3. The Contractor shall locate existing utilities a minimum of two weeks in advance of construction operations in vicinity of utilities.
4. For all Standard Details see Standards bound in Specifications.
5. All water mains to be C.I.P. or D.I.P. and have a minimum of 3 1/2' cover.
6. Block all fittings with concrete, see standard details bound in Specifications.
7. Bury Line elevations shall be set the same as edge of paving, top of curb or as directed by the engineer in the field.
8. All Fire Hydrants to be strapped to Tee and buttressed with concrete in accordance with Standard Details W-4.
9. Clear all utilities by a minimum of 6', clear all poles by 2'0" minimum or tunnel as required.



STAKEOUT & DIARY IN F.B. # 4073



Kenneth A. McGold

Contract No. 269-W

<p>WHITMAN, REQUARDT & ASSOCIATES ENGINEERS 1304 ST. PAUL ST. BALTIMORE, MARYLAND</p>	<p>HOWARD COUNTY METROPOLITAN COMMISSION 8-16-68 DATE <i>W O Filbert</i> CHIEF ENGINEER</p>	<p>CONTRACT NO. 269-W</p>	<p>PLAN AND PROFILES OF WATER MAINS</p>	<p>ELLCOTT CITY-WILTON ACRES ADDITION ELECTION DISTRICT-ELLCOTT CITY NO.2</p>	<p>DRAWING NO. 1 OF 1 SCALE AS SHOWN</p>
---	---	---------------------------	---	---	--

WS 269-W/1