

PROFESSIONAL CERTIFICATION. I hereby certify that these documents were prepared or approved by me, and that I am a duly licensed professional engineer under the laws of the State of Maryland, License No. 31363, Expiration Date 1/16/2016.

DEPARTMENT OF PUBLIC WORKS
HOWARD COUNTY, MARYLAND

James P. Butler 3/12/15
CHIEF, BUREAU OF ENGINEERING

John J. ... 2/28/15
CHIEF, UTILITY DESIGN DIVISION

KCI TECHNOLOGIES
936 Ridgebrook Road
Stevens, MD 21152
Phone: (410) 316-7800
Fax: (410) 316-7817
www.kci.com

STATE OF MARYLAND
Professional Engineer
No. 31363
02/27/2015

DES: KJ	
DRN: KJ	
CHK: GW	
DATE: FEB. 2015	
BY: KKS	As BUILT
NO.	
REVISION	
DATE	

FIRE HYDRANT PLANS

60' SCALE MAP NO. 31 BLOCK NO. 4

FIRE HYDRANTS ON BONNIE BRANCH ROAD

CAPITAL PROJECT No. W-8248
CONTRACT No. 266W

ELECTION DISTRICT NO. 1 HOWARD COUNTY, MARYLAND

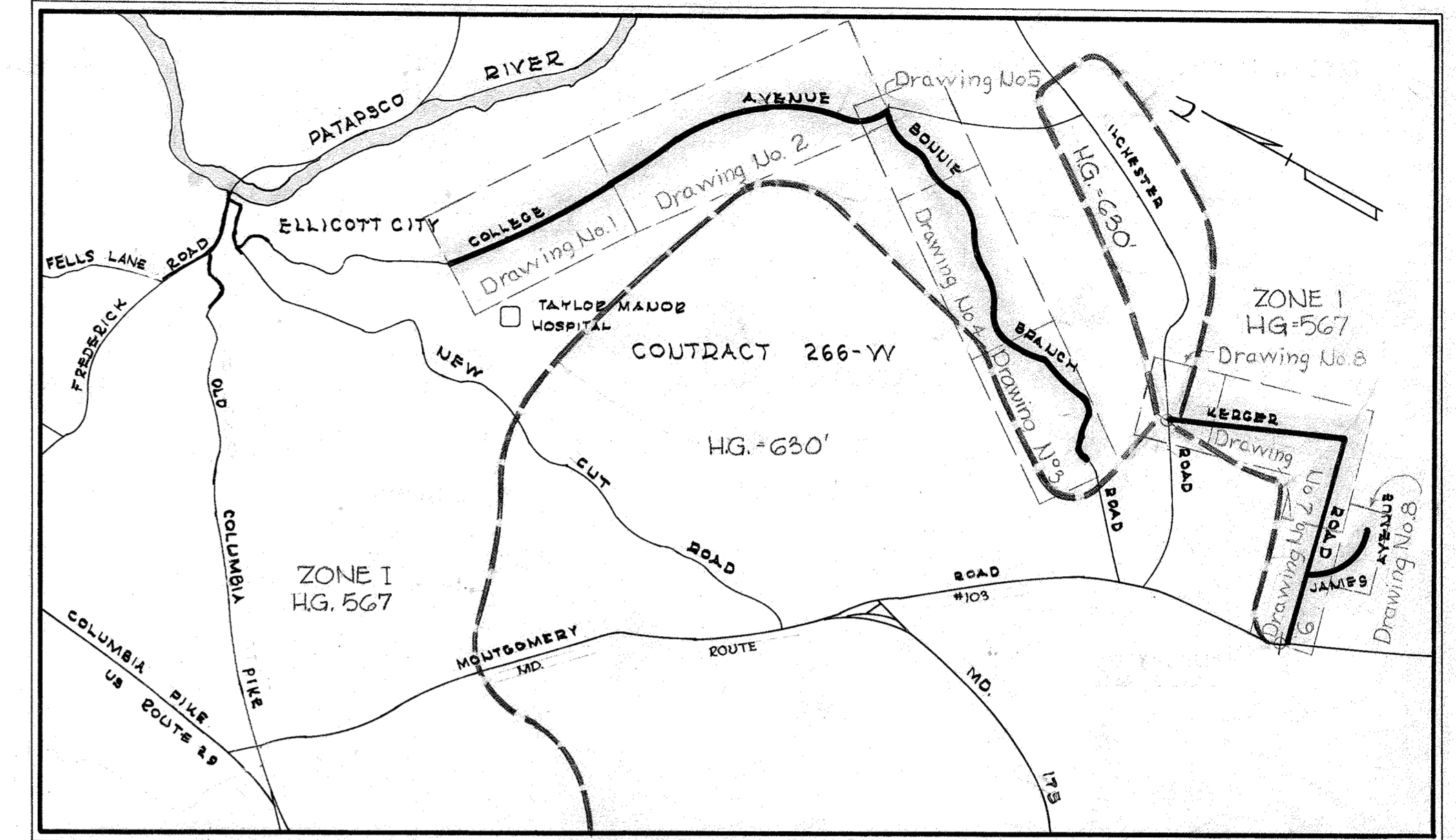
SCALE AS SHOWN
SHEET 13 OF 13

As-Built

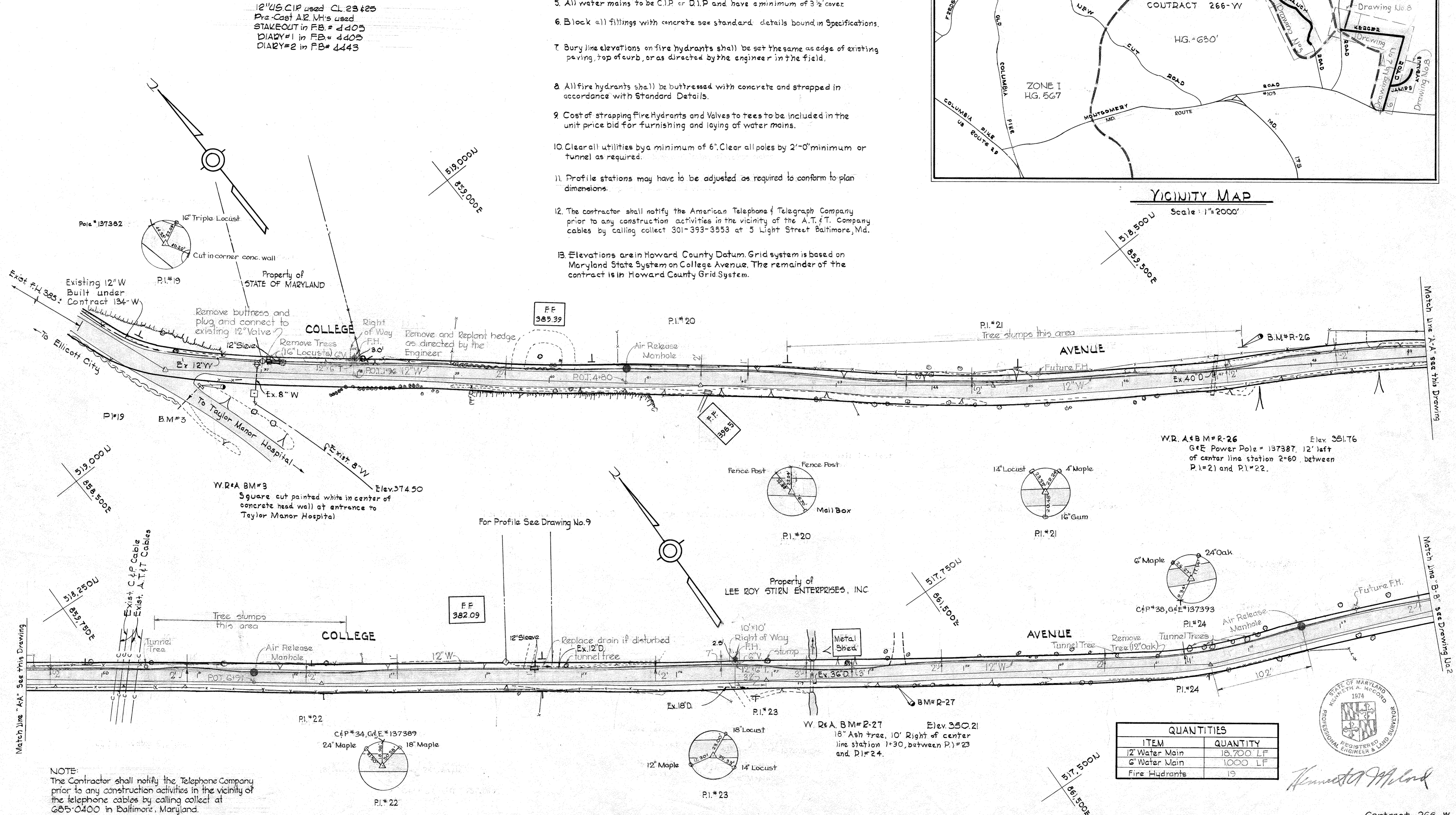
GENERAL NOTES

- 14. Cost of Grouted Rip Rap to be included in the unit price bid for furnishing and laying of water mains.
- 15. Contractor shall remove trees as indicated and stumps and roots along line of excavation. Payment for such removal shall be included in the unit price bid for excavation and backfill for water mains.

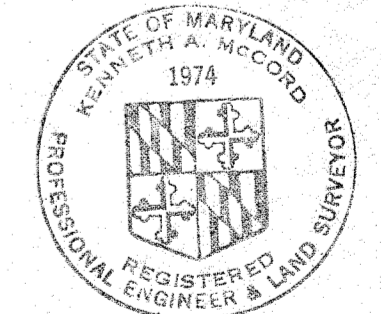
- 1. Approximate locations of existing mains are shown. The contractor shall take all necessary precautions to protect existing mains and services and maintain uninterrupted supply. Any damage incurred shall be repaired immediately.
- 2. All pipe elevations shown are invert \odot Elevations.
- 3. The contractor shall locate existing utilities, a minimum of two weeks in advance of construction operations in vicinity of utilities.
- 4. For all standard details see standards bound in Specifications.
- 5. All water mains to be C.I.P. or D.I.P. and have a minimum of 3 1/2' cover.
- 6. Block all fillings with concrete see standard details bound in Specifications.
- 7. Bury line elevations on fire hydrants shall be set the same as edge of existing paving, top of curb, or as directed by the engineer in the field.
- 8. All fire hydrants shall be buttressed with concrete and strapped in accordance with Standard Details.
- 9. Cost of strapping fire hydrants and valves to trees to be included in the unit price bid for furnishing and laying of water mains.
- 10. Clear all utilities by a minimum of 6'. Clear all poles by 2'-0" minimum or tunnel as required.
- 11. Profile stations may have to be adjusted as required to conform to plan dimensions.
- 12. The contractor shall notify the American Telephone & Telegraph Company prior to any construction activities in the vicinity of the A.T. & T. Company cables by calling collect 301-393-3553 at 5 Light Street Baltimore, Md.
- 13. Elevations are in Howard County Datum. Grid system is based on Maryland State System on College Avenue. The remainder of the contract is in Howard County Grid System.



VICINITY MAP
Scale: 1" = 2000'



QUANTITIES	
ITEM	QUANTITY
12" Water Main	18,700 LF
6" Water Main	1000 LF
Fire Hydrants	19

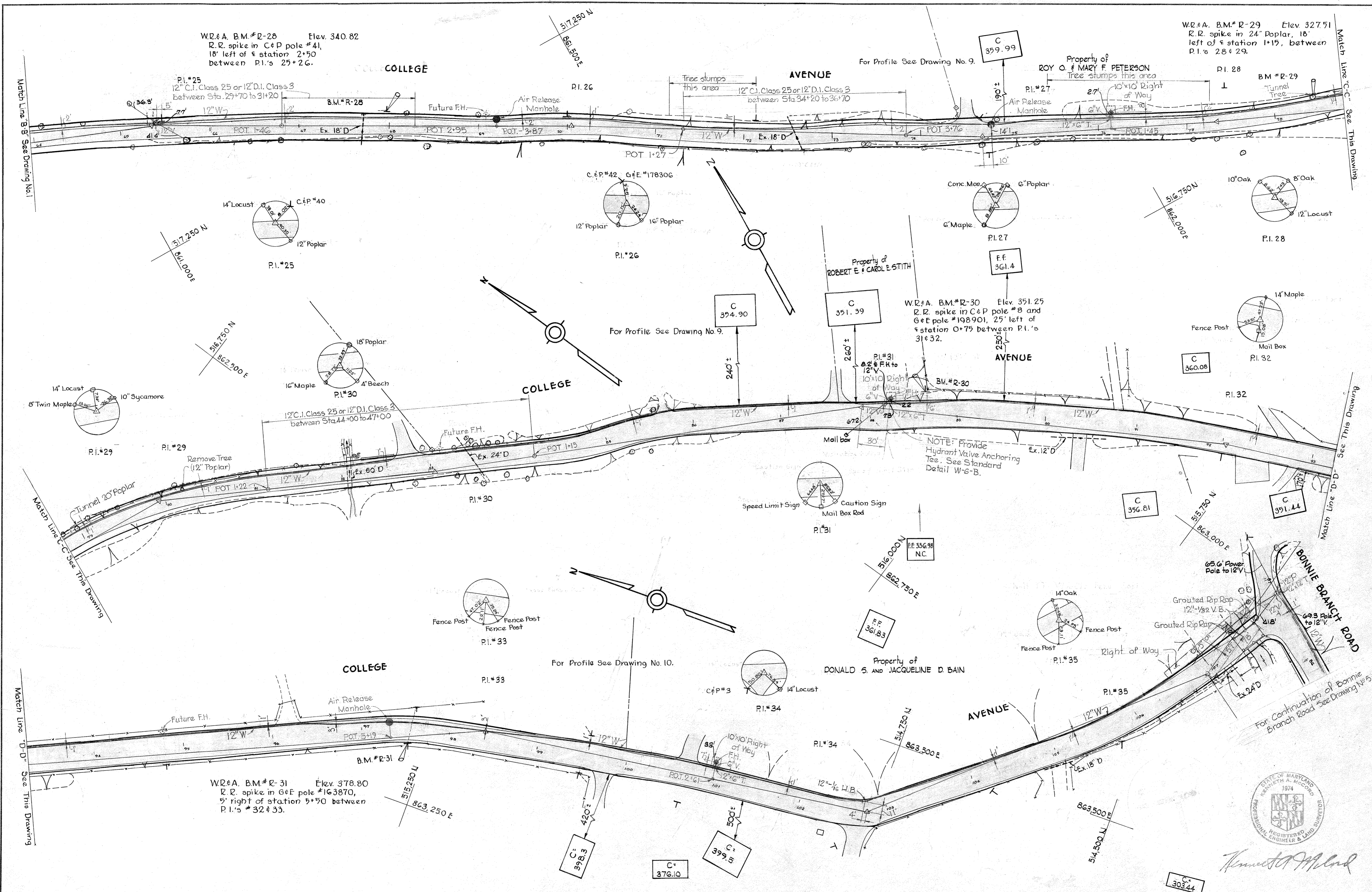


Kenneth M. Clark

NOTE:
The Contractor shall notify the Telephone Company prior to any construction activities in the vicinity of the telephone cables by calling collect at 301-393-3553 in Baltimore, Maryland.

WHITMAN, REQUARDT & ASSOCIATES ENGINEERS 1304 ST. PAUL ST. BALTIMORE, MARYLAND	HOWARD COUNTY METROPOLITAN COMMISSION APRIL 22, 1969 DATE <i>W. O. F. Sibal</i> CHIEF ENGINEER	CONTRACT NO. 266-W	PLAN OF WATER MAINS
ELECTION DISTRICT ELLICOTT CITY NO. 2			Contract 266-W DRAWING NO. 1 OF 11 SCALE 1" = 50'

MS 266-W/1



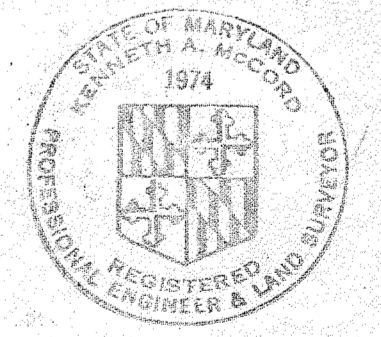
W.R.&A. B.M.#R-28 Elev. 340.82
 R.R. spike in C&P pole #41,
 18' left of station 2+50
 between P.I.'s 25+26.

W.R.&A. B.M.#R-29 Elev. 327.51
 R.R. spike in 24" Poplar, 18'
 left of station 1+17, between
 P.I.'s 28+29.

W.R.&A. B.M.#R-30 Elev. 351.25
 R.R. spike in C&P pole #8 and
 G&E pole #198901, 25' left of
 station 0+75 between P.I.'s
 31+32.

W.R.&A. B.M.#R-31 Elev. 378.80
 R.R. spike in G&E pole #163870,
 5' right of station 5+50 between
 P.I.'s #32+33.

NOTE: Provide
 Hydrant Valve Anchoring
 Tee. See Standard
 Detail W-6-B.



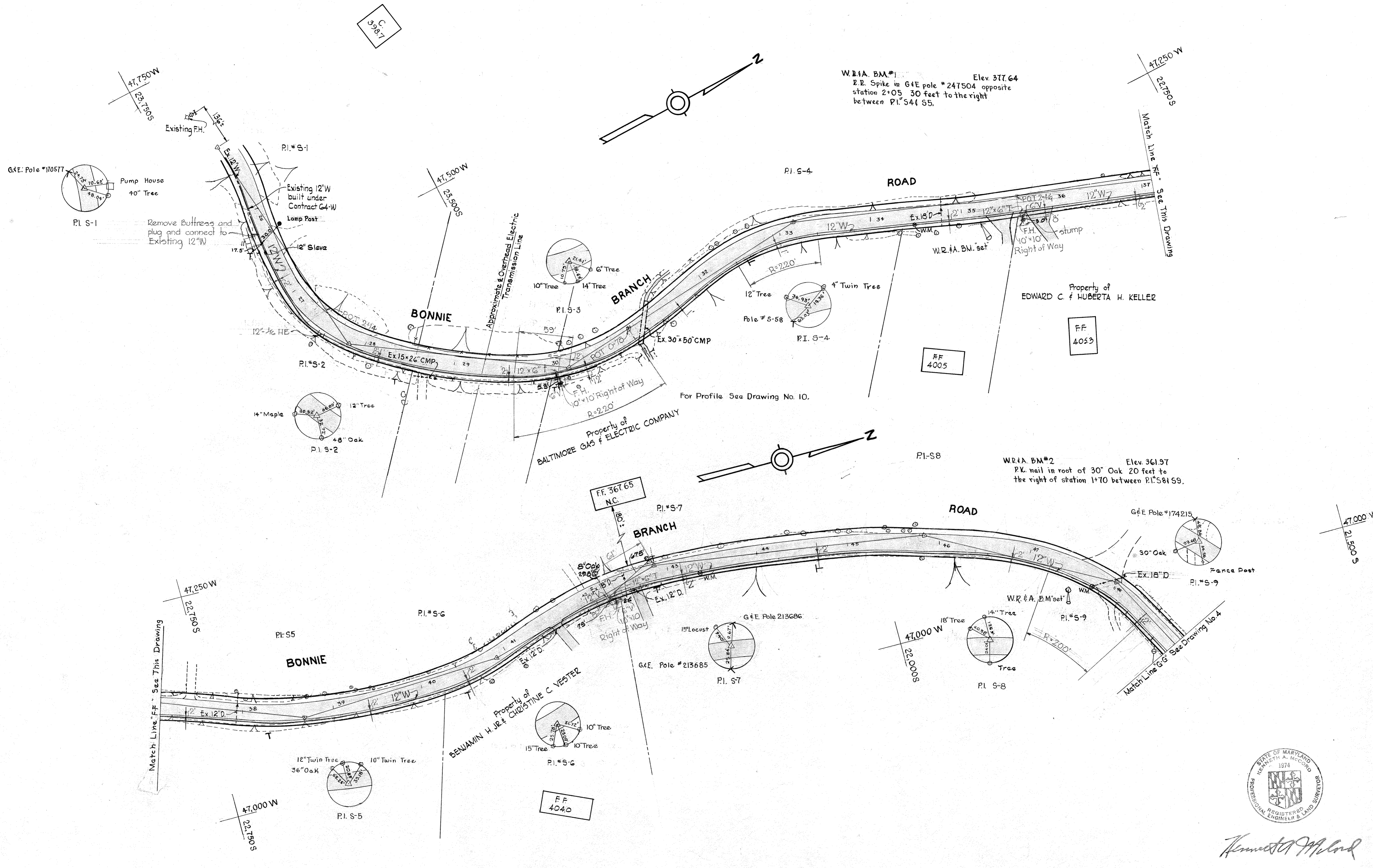
Kenneth A. Moad

WHITMAN, REQUARDT & ASSOCIATES ENGINEERS 1304 ST. PAUL ST. BALTIMORE, MARYLAND	HOWARD COUNTY METROPOLITAN COMMISSION APRIL 22, 1969 <i>W. O. R. B. B.</i> CHIEF ENGINEER	CONTRACT NO. 266-W	PLAN OF WATER MAINS	ELECTION DISTRICT ELLICOTT CITY NO. 2	Contract 266-W DRAWING NO. 2 OF 11 SCALE 1" = 50' 37'-495 36'-494 35'-493 34'-494
---	--	--------------------	------------------------	--	---

W. O. 6021-2

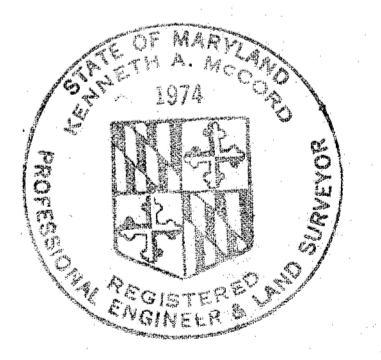
JAN 28 1970 AS BUILT

WS 266-W/2



W.B.A. BM#1 Elev. 317.64
 2" E. Spike in G&E pole #247504 opposite
 station 2+05 30 feet to the right
 between P.I. 54 & 55.

W.B.A. BM#2 Elev. 361.97
 P.K. nail in root of 30" Oak 20 feet to
 the right of station 1+70 between P.I. 58 & 59.



Kenneth A. McCord

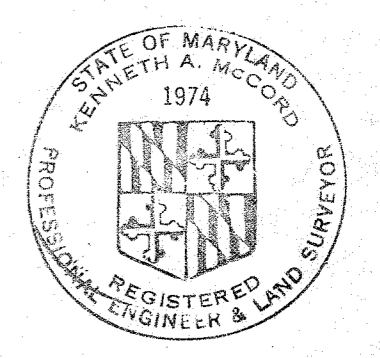
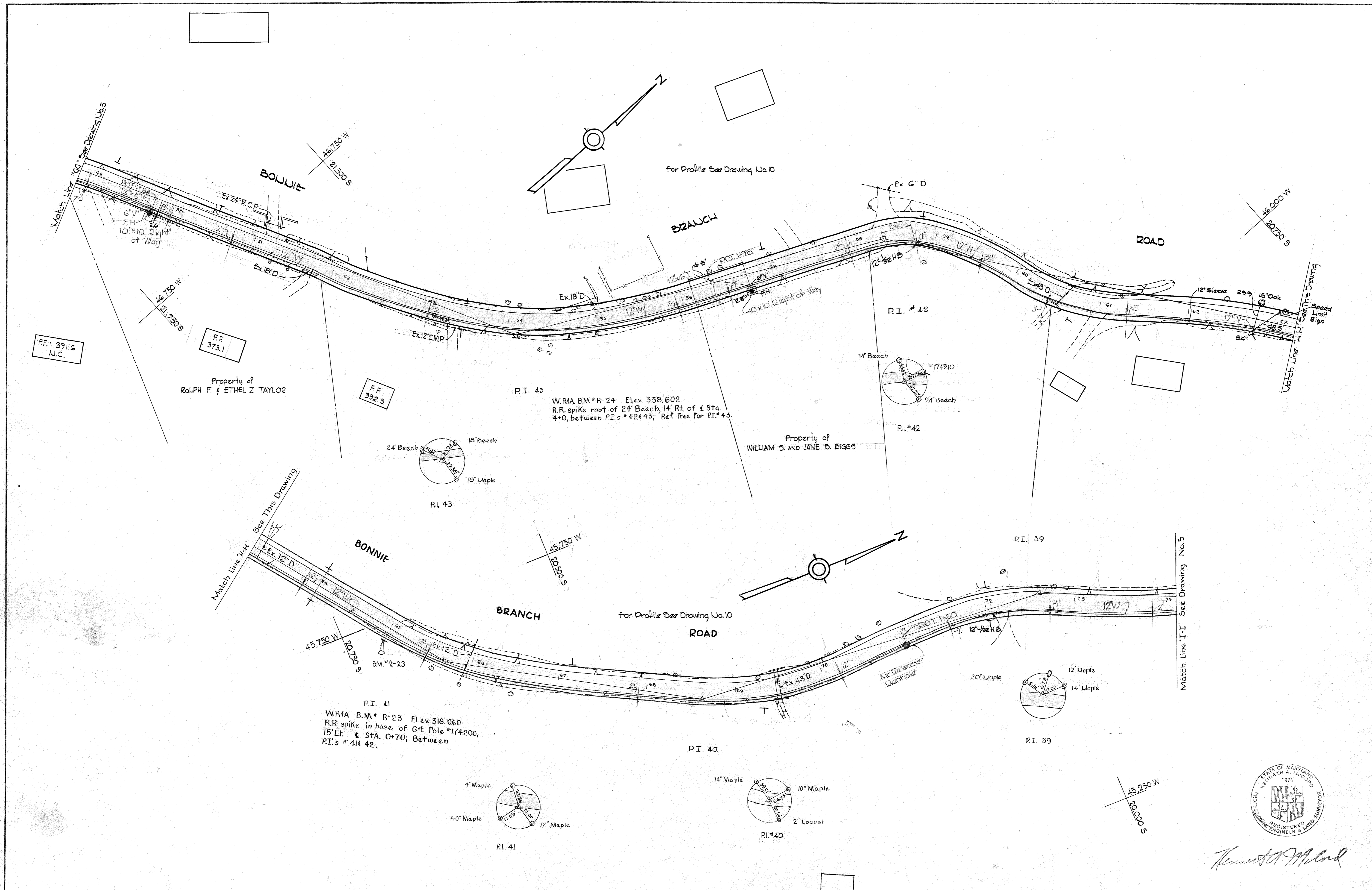
WHITMAN, REQUARDT & ASSOCIATES ENGINEERS 1304 ST. PAUL ST. BALTIMORE, MARYLAND	HOWARD COUNTY METROPOLITAN COMMISSION APRIL 22, 1969 DATE	<i>W. O. Paluba</i> CHIEF ENGINEER	CONTRACT NO. 266-W	PLAN OF WATER MAINS	ELECTION DISTRICT ELLICOTT CITY NO. 2	Contract 266-W
						DRAWING NO. 3 OF 11

W. O. 6021-2

AS BUILT JAN. 28, 1970 F.B. 4200 2024

WS 266-W/3

WS 266-W/4



Kenneth A. McLeod

WHITMAN, REQUARDT & ASSOCIATES ENGINEERS 1304 ST. PAUL ST. BALTIMORE, MARYLAND	HOWARD COUNTY METROPOLITAN COMMISSION APRIL 22, 1969 <i>W O Filbert</i> CHIEF ENGINEER	CONTRACT NO. 266-W	PLAN OF WATER MAINS	ELECTION DISTRICT ELLICOTT CITY NO. 2	Contract 266-WY DRAWING NO. 4 OF 11 SCALE 1" = 50' JAN. 28, 1970 F.B. 4200, 3024
---	---	--------------------	------------------------	--	--

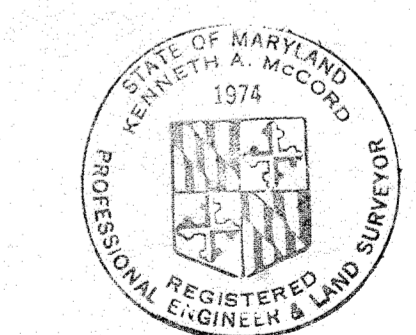
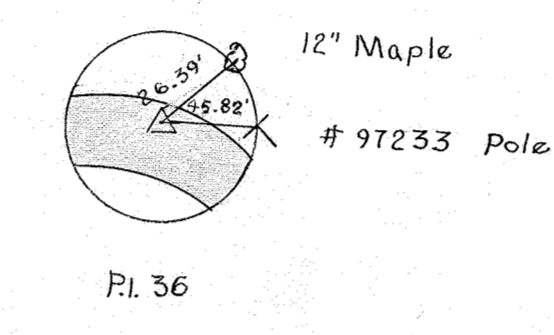
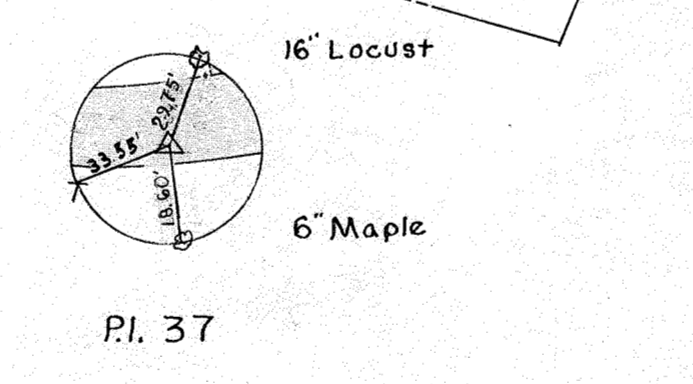
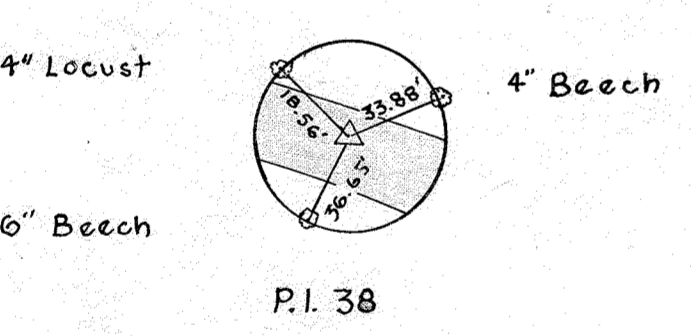
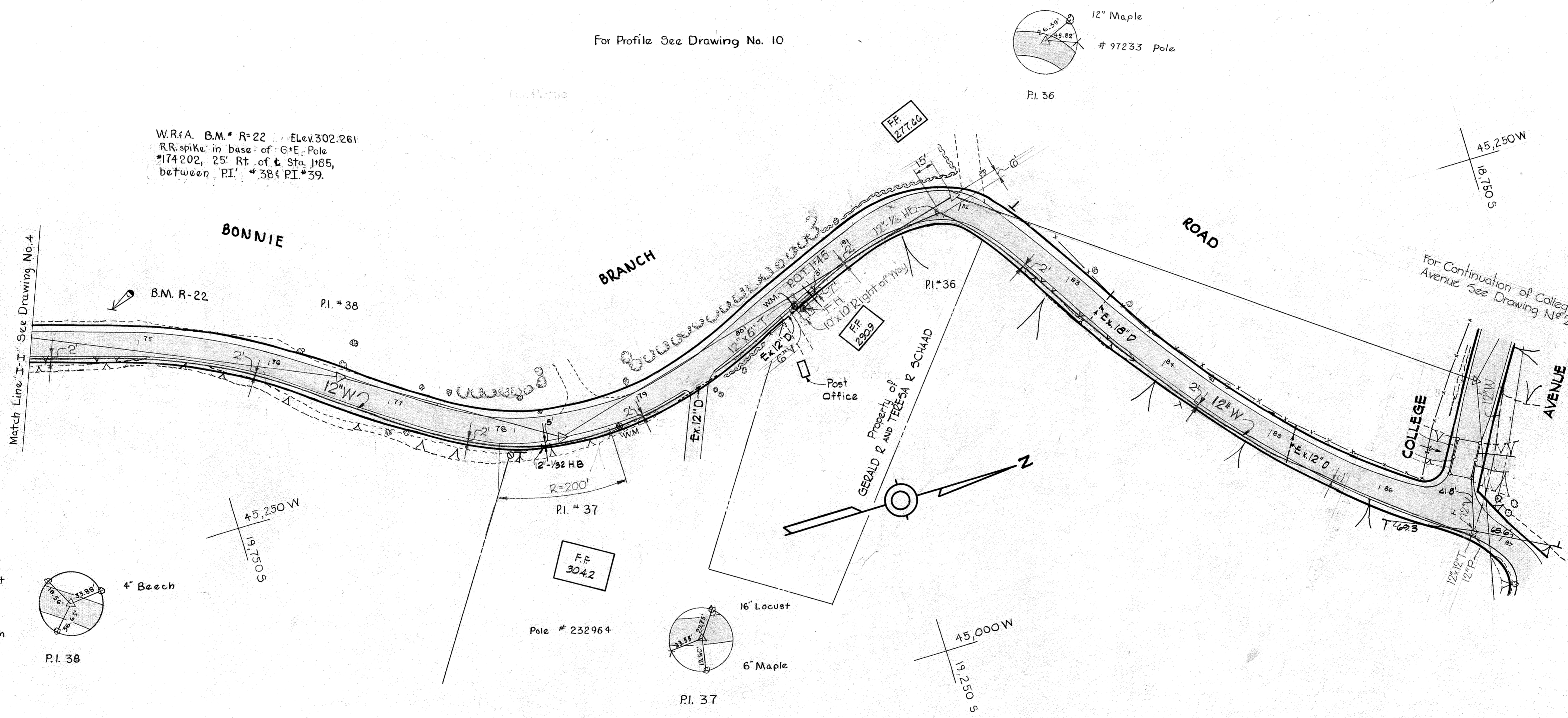
W. O. 6021-2

AS BUILT

For Profile See Drawing No. 10

W.R.A. B.M. # R-22 Elev 302.261
R.R. spike in base of G+E Pole
#174202, 25' Rt. of & Sta. 1465,
between P.I. #38 & P.I. #39.

Match Line "I-I" See Drawing No. 4



Kenneth A. McCord

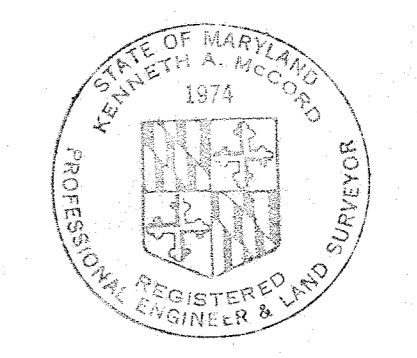
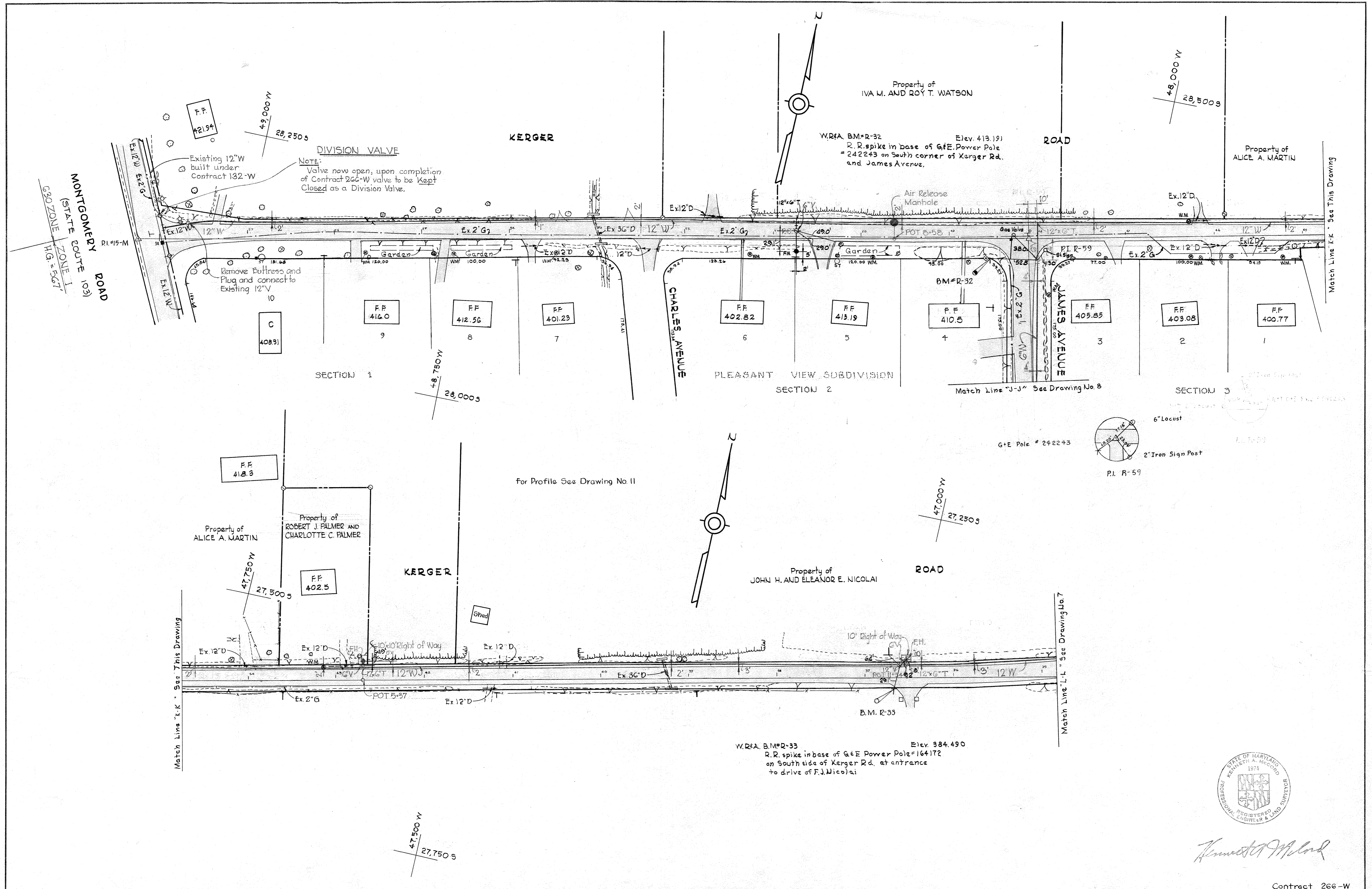
WHITMAN, REQUARDT & ASSOCIATES ENGINEERS 1304 ST. PAUL ST. BALTIMORE, MARYLAND	HOWARD COUNTY METROPOLITAN COMMISSION APRIL 22, 1969 <i>W. O. Reib</i> CHIEF ENGINEER	CONTRACT NO. 266-W	PLAN OF WATER MAINS	ELECTION DISTRICT ELLICOTT CITY NO. 2	Contract 266-W
					DRAWING NO. 5 OF 11

W. O. 6021-2

AS BUILT JAN 28, 1970 FB 3024.4200

266-W/5

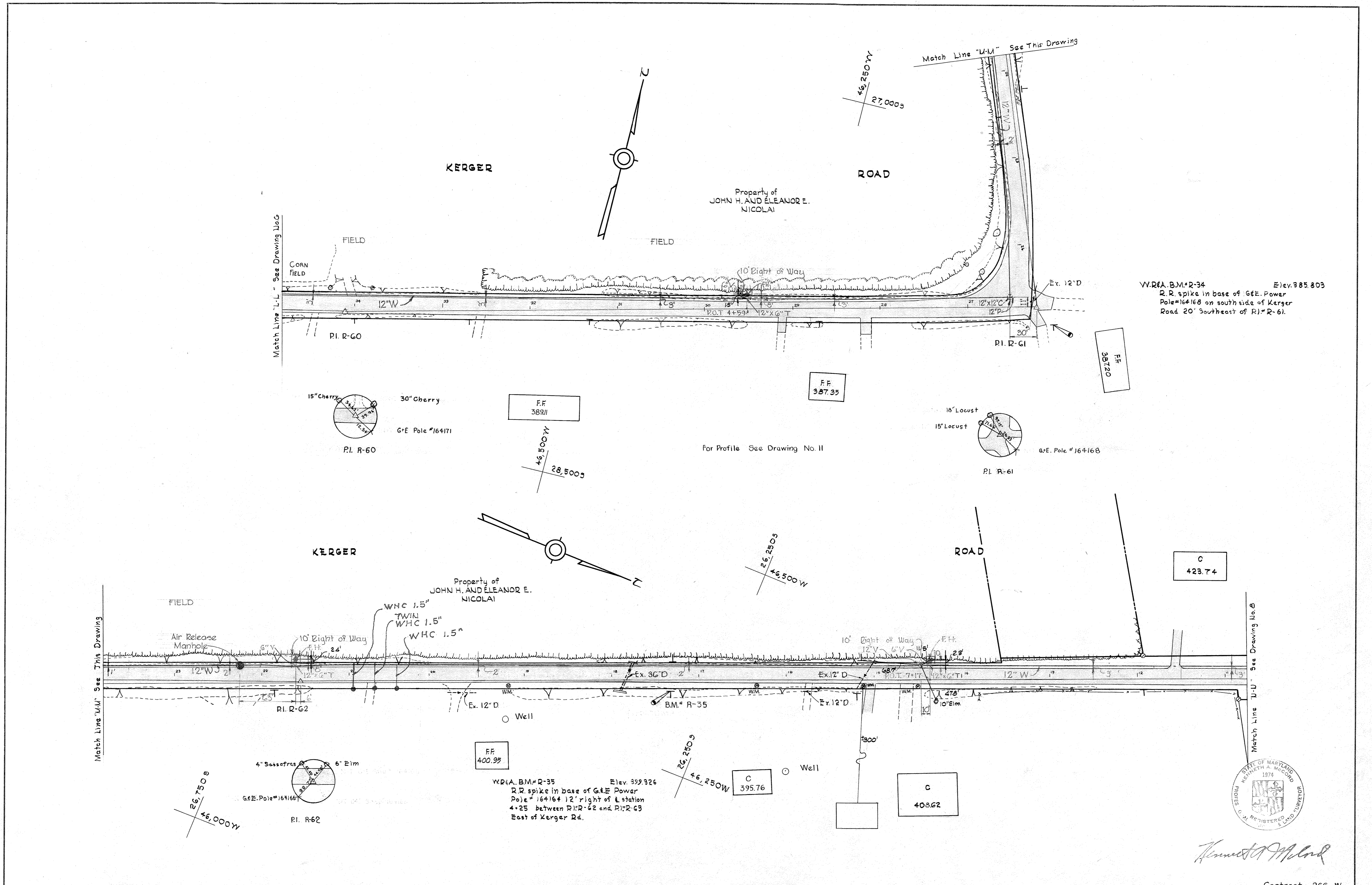
CM



Kenneth A. M. Land

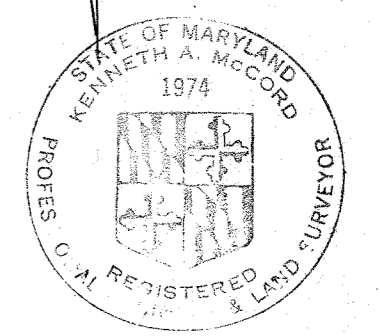
WHITMAN, REQUARDT & ASSOCIATES ENGINEERS 1304 ST. PAUL ST. BALTIMORE, MARYLAND	HOWARD COUNTY METROPOLITAN COMMISSION APRIL 22, 1969 <i>W. O. Palmer</i> CHIEF ENGINEER	CONTRACT NO. 266-W	PLAN OF WATER MAINS	ELECTION DISTRICT ELLICOTT CITY NO. 2	Contract 266-W DRAWING NO. 6 OF 11	SCALE 1" = 50'
					AS BUILT AS BUILT	JAN. 28, 1970

W. O. 6021-2



W.R.A. B.M. R-34 Elev. 385.803
 R.R. spike in base of G.E. Power Pole #164168 on south side of Kerger Road 20' Southeast of R1 R-61.

W.R.A. B.M. R-35 Elev. 399.326
 R.R. spike in base of G.E. Power Pole # 164164 12' right of L station 4+25 between R1 R-62 and R1 R-63 East of Kerger Rd.

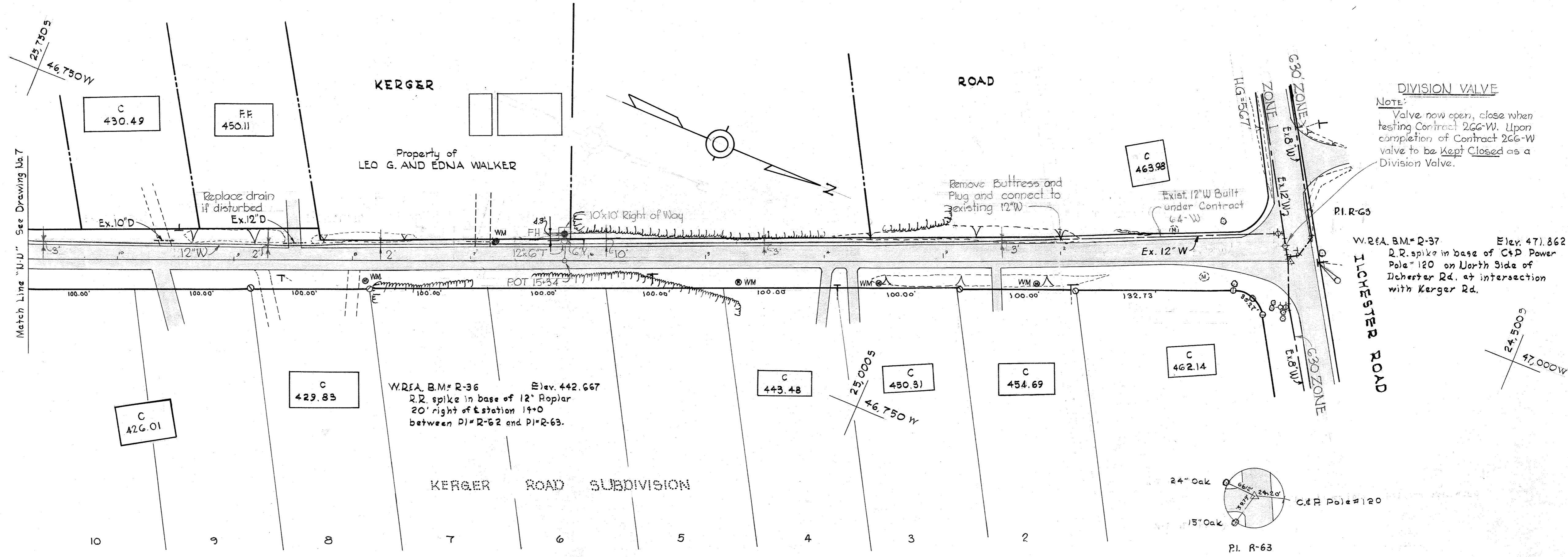


Kenneth A. Milrod

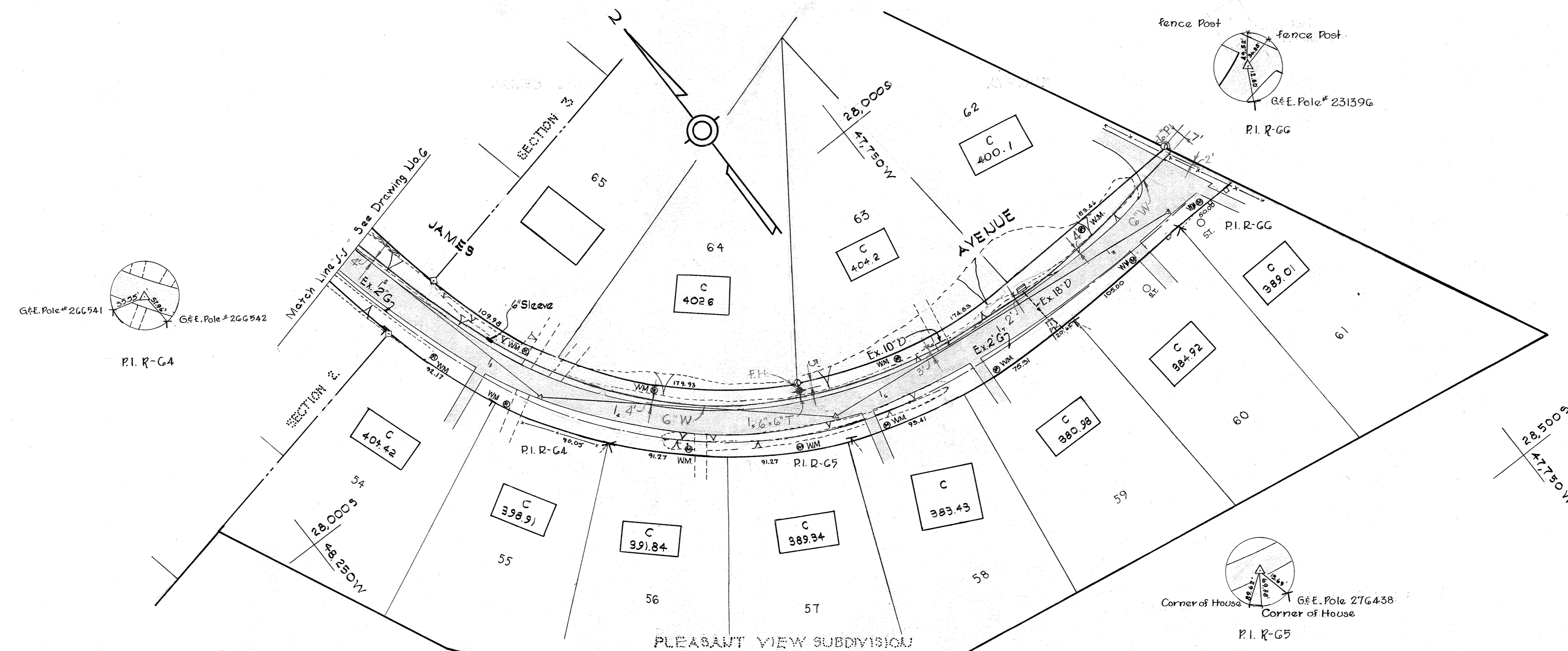
WHITMAN, REQUARDT & ASSOCIATES ENGINEERS 1304 ST. PAUL ST. BALTIMORE, MARYLAND	HOWARD COUNTY METROPOLITAN COMMISSION APRIL 22, 1969 <i>W. O. Falbot</i> CHIEF ENGINEER	CONTRACT NO. 266-W	PLAN OF WATER MAINS	ELECTION DISTRICT ELLICOTT CITY NO. 2	Contract 266-W
					DRAWING NO. 7 OF 11

W. O. 6021-2 WRA AS BUILT FOR ADD 2/27/23 AS BUILT JAN. 28, 1970 FB 4221, 4222

WS 266-W/7

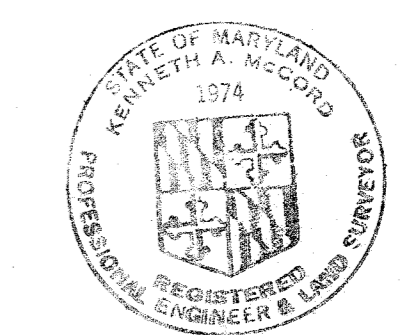
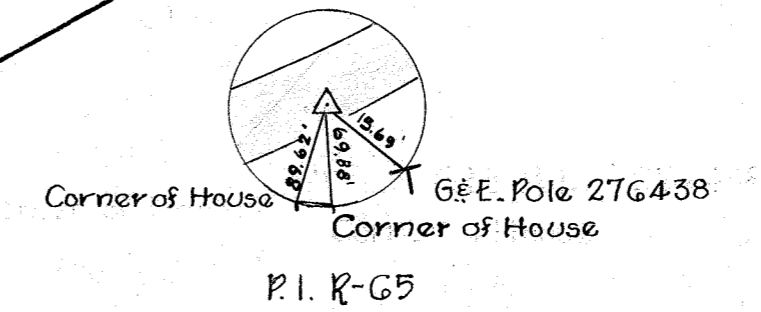
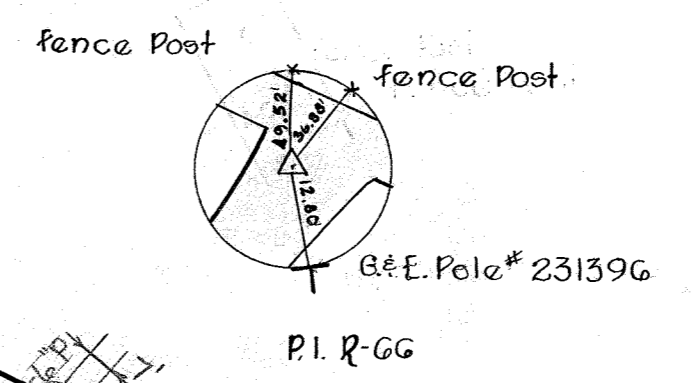
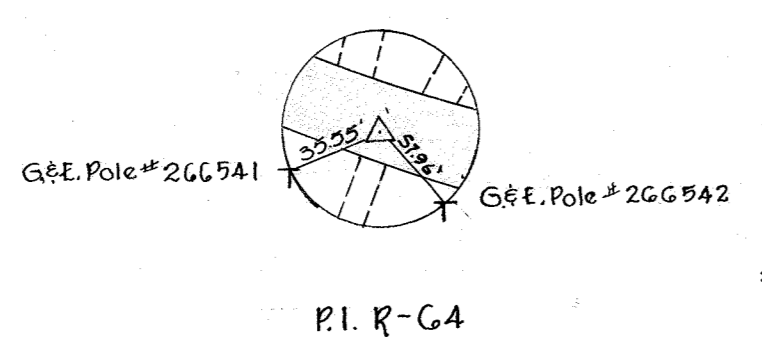


For Profile See Drawing No. 11



DIVISION VALVE
 Note: Valve now open, close when testing Contract 266-W. Upon completion of Contract 266-W valve to be kept closed as a Division Valve.

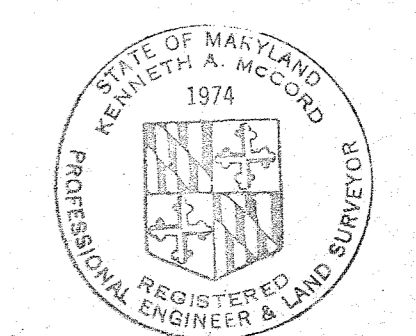
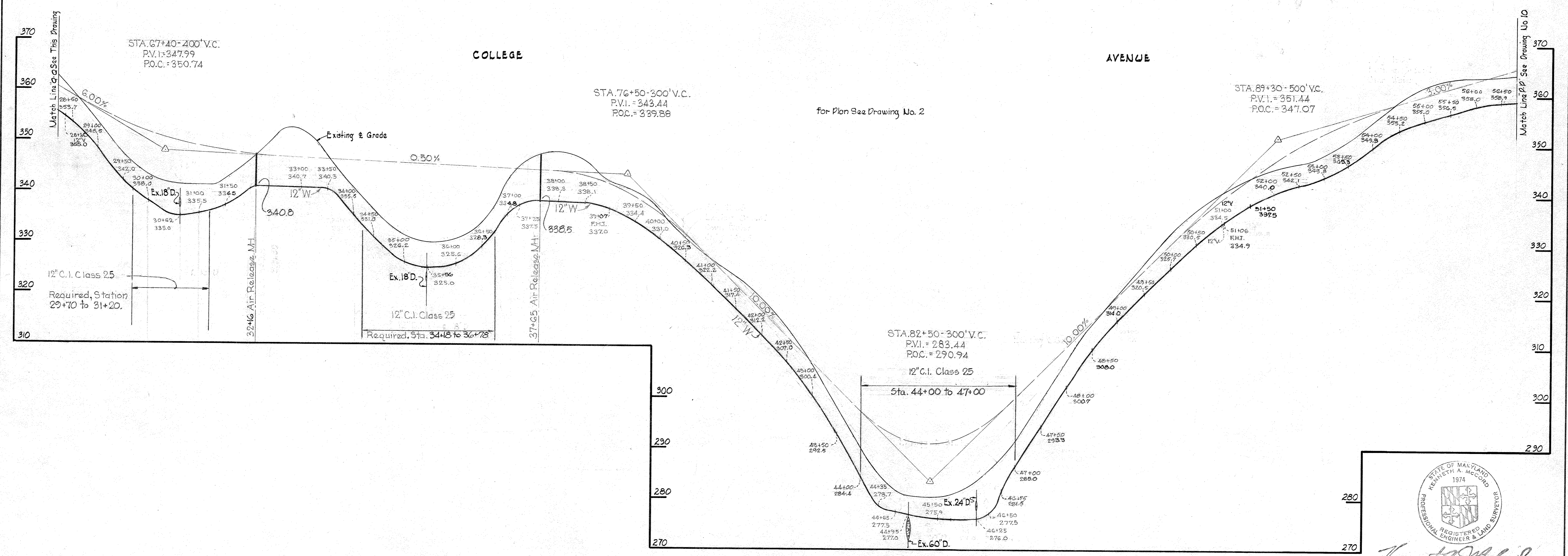
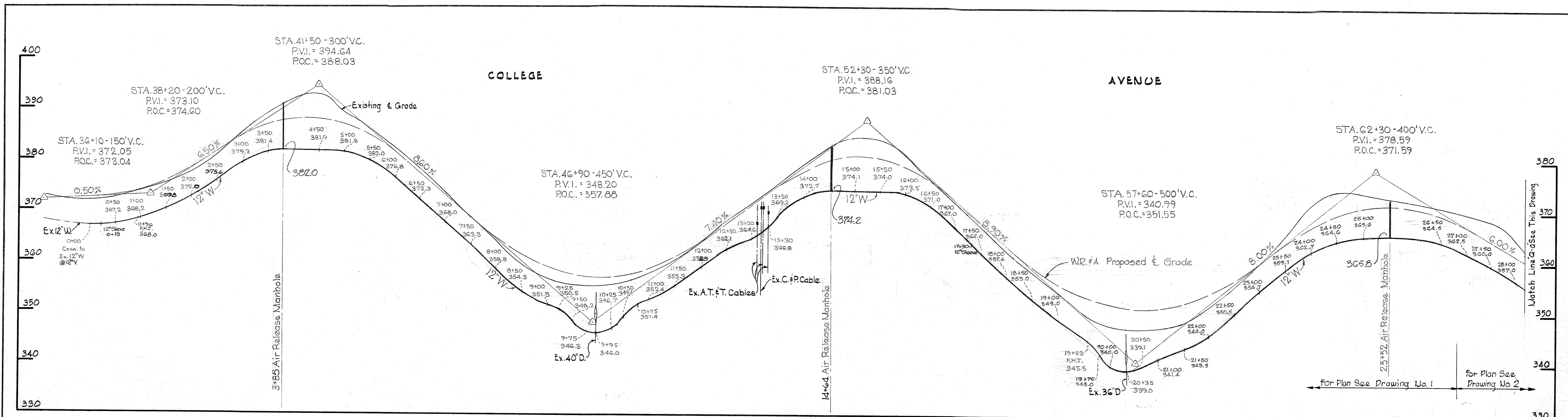
V.R.E. B.M. R-37 Elev. 471.862
 R.R. spike in base of C&D Power Pole #120 on North Side of Ichester Rd. at intersection with Kerger Rd.



Kenneth A. McCord

WHITMAN, REQUARDT & ASSOCIATES ENGINEERS 1304 ST. PAUL ST. BALTIMORE, MARYLAND	HOWARD COUNTY METROPOLITAN COMMISSION APRIL 22, 1969 DATE	CONTRACT NO. 266-W W. O. Albert CHIEF ENGINEER	PLAN OF WATER MAINS	ELECTION DISTRICT ELLICOTT CITY NO. 2	DRAWING NO. 8 OF 11	SCALE 1" = 50'
					Contract 266-W	AS BUILT JAN. 28, 1970

266-W/8
 WS



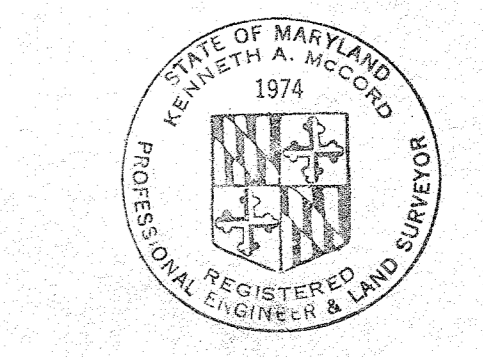
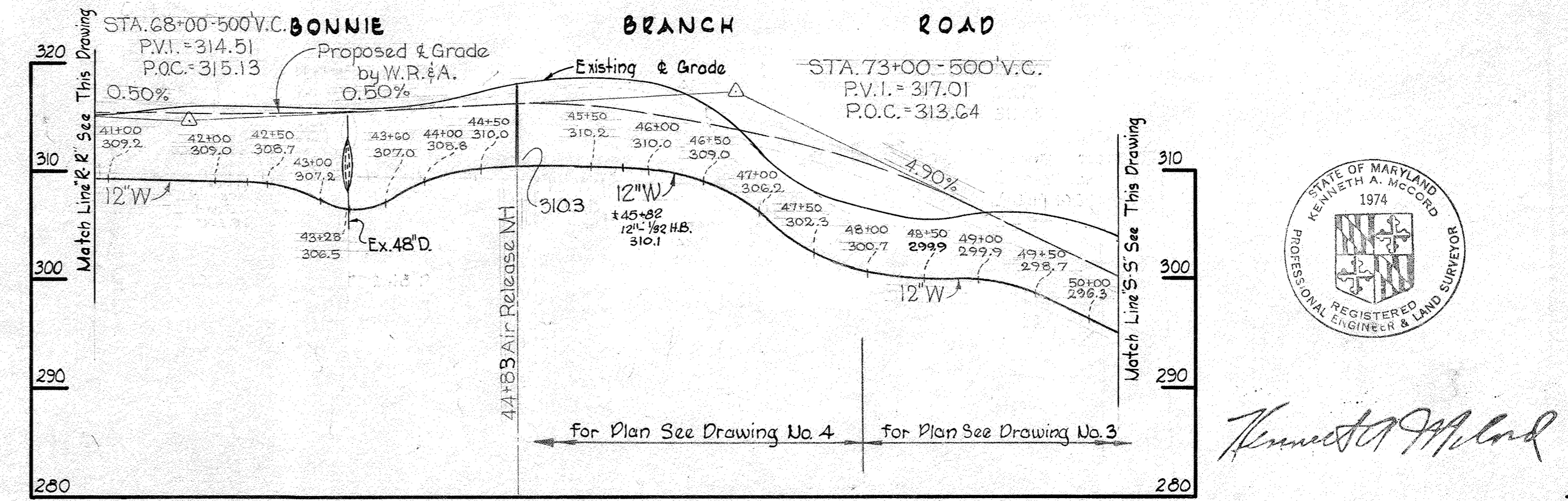
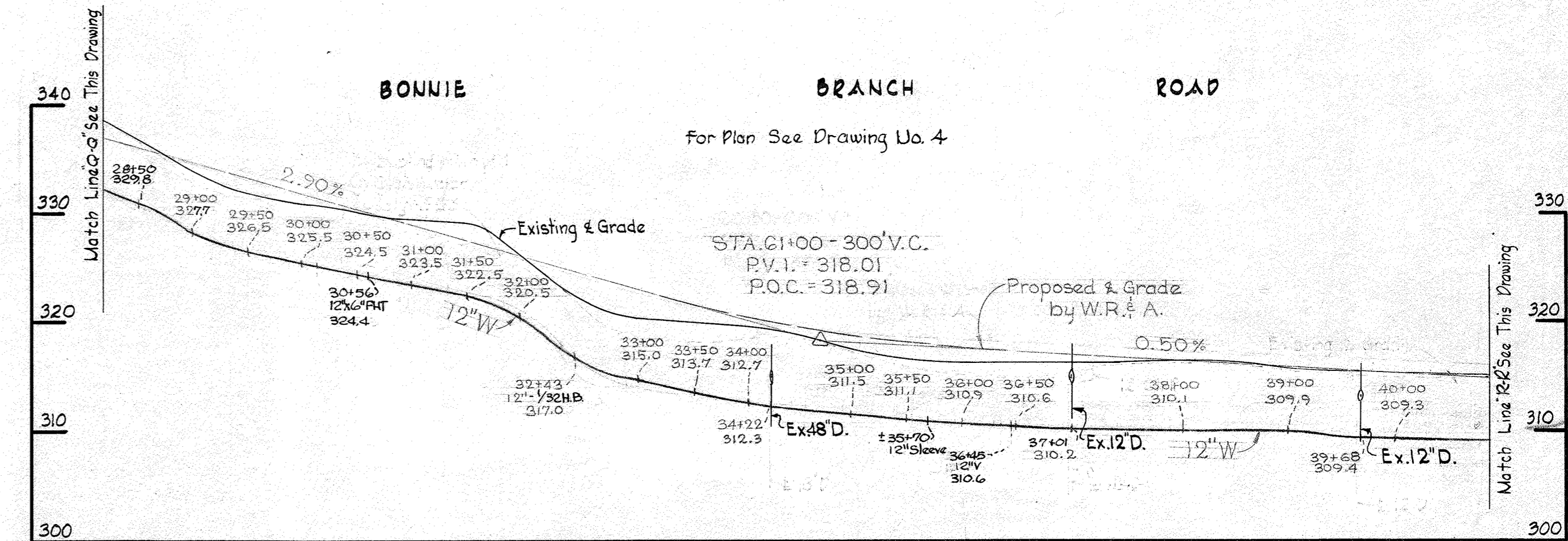
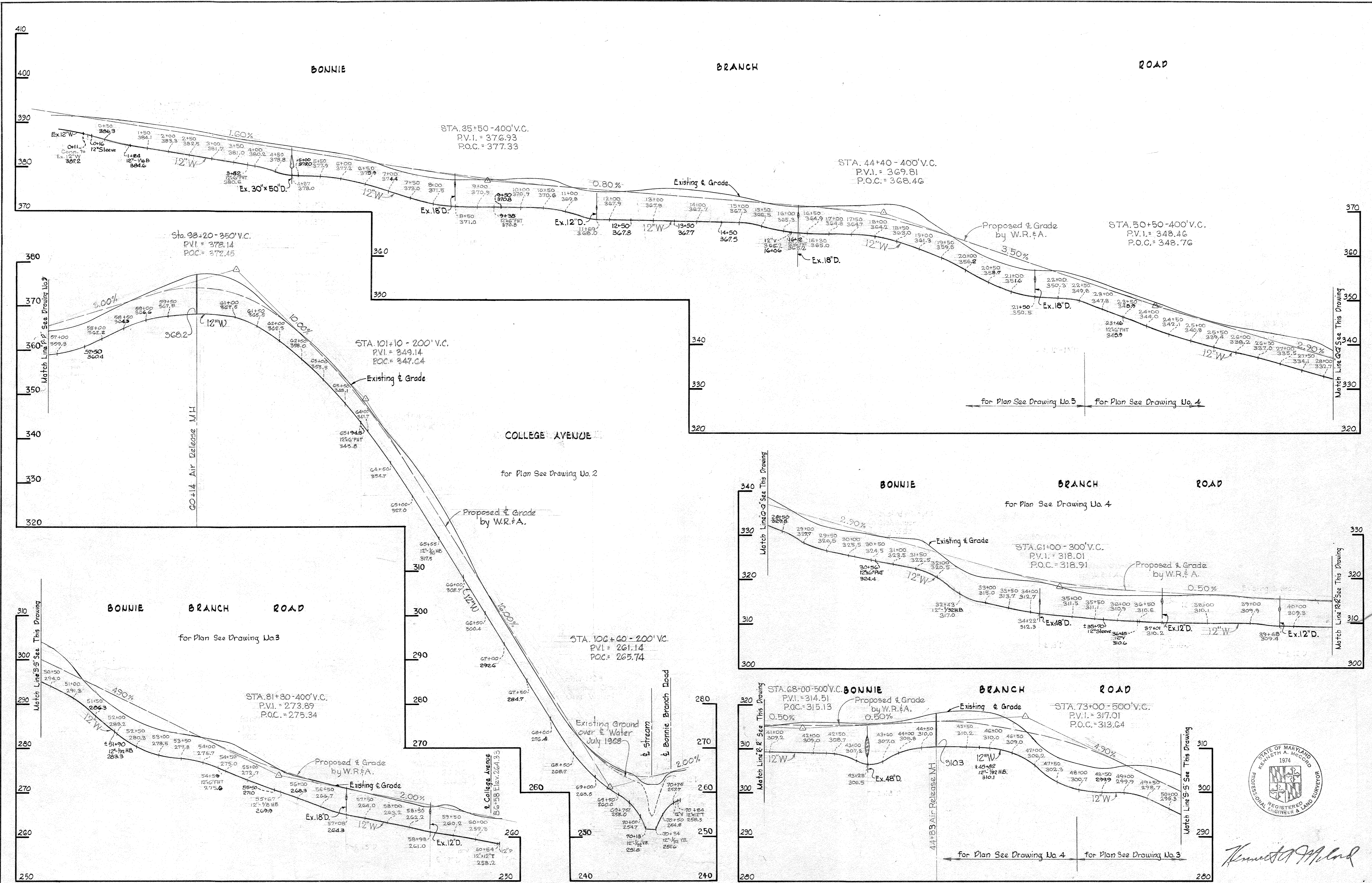
Kenneth A. McLeod

WHITMAN, REQUARDT & ASSOCIATES ENGINEERS 1304 ST. PAUL ST. BALTIMORE, MARYLAND	HOWARD COUNTY METROPOLITAN COMMISSION APRIL 22, 1969 DATE <i>W. O. Filbert</i> CHIEF ENGINEER	CONTRACT NO. 266-W	PROFILES OF WATER MAINS	ELECTION DISTRICT ELLICOTT CITY NO. 2	Contract 266-W
					DRAWING NO. 9 OF 11

W. O. 6021-2

JAN. 28, 1970 AS BUILT

WS 266-W/9



Kenneth A. Milrod

Contract 266-W

WHITMAN, REQUARDT & ASSOCIATES
ENGINEERS
1304 ST. PAUL ST.
BALTIMORE, MARYLAND

HOWARD COUNTY METROPOLITAN COMMISSION
APRIL 22, 1969
DATE

W. O. Falbat
CHIEF ENGINEER

CONTRACT NO. 266-W

PROFILES OF
WATER MAINS

ELECTION DISTRICT
ELLICOTT CITY NO. 2

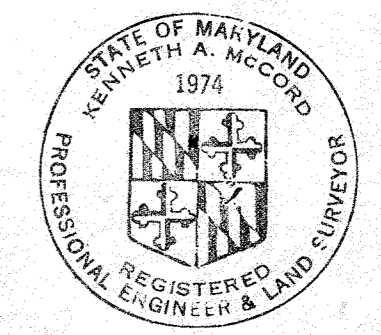
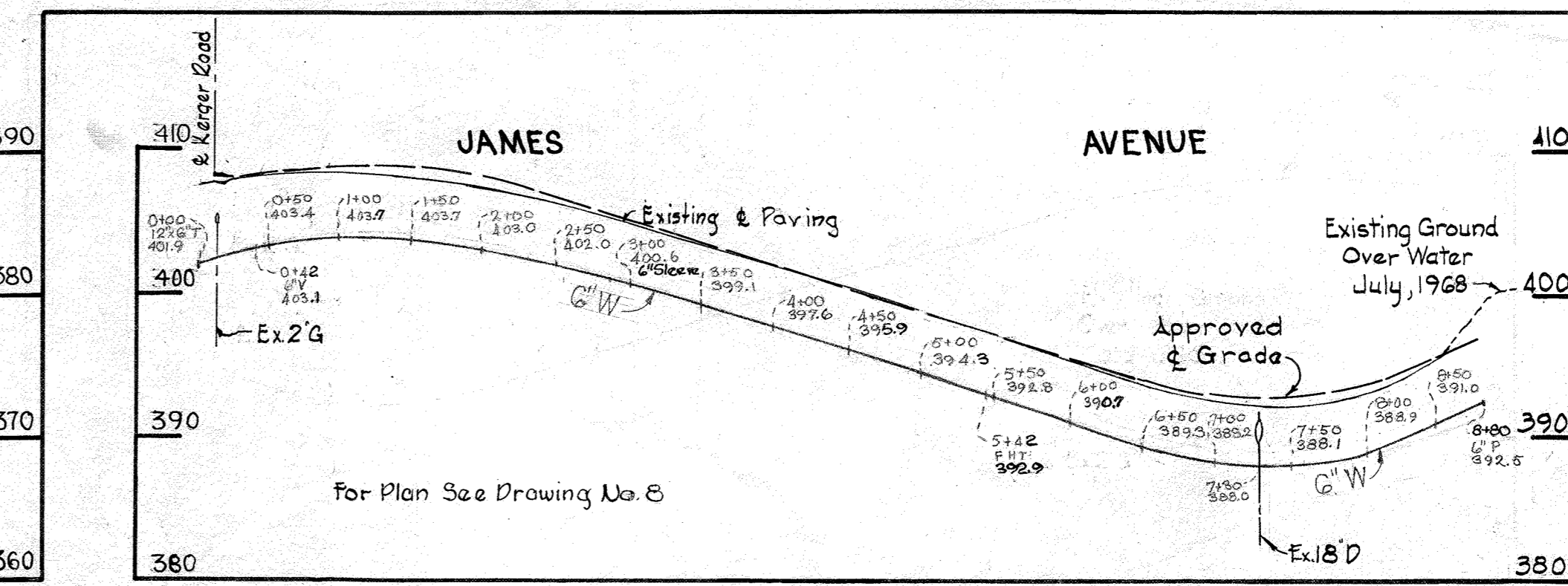
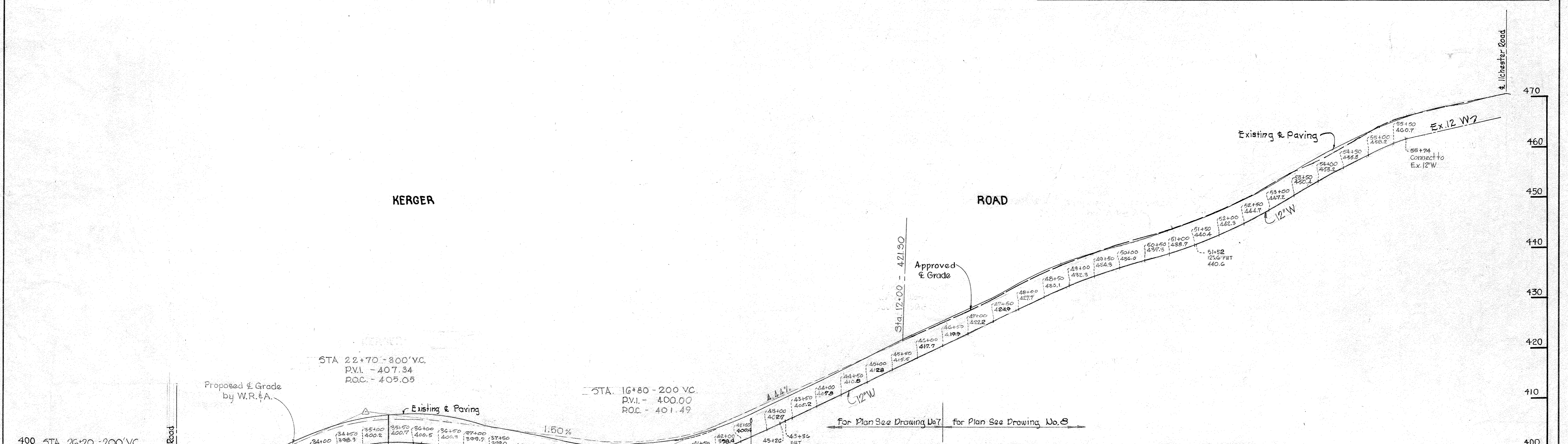
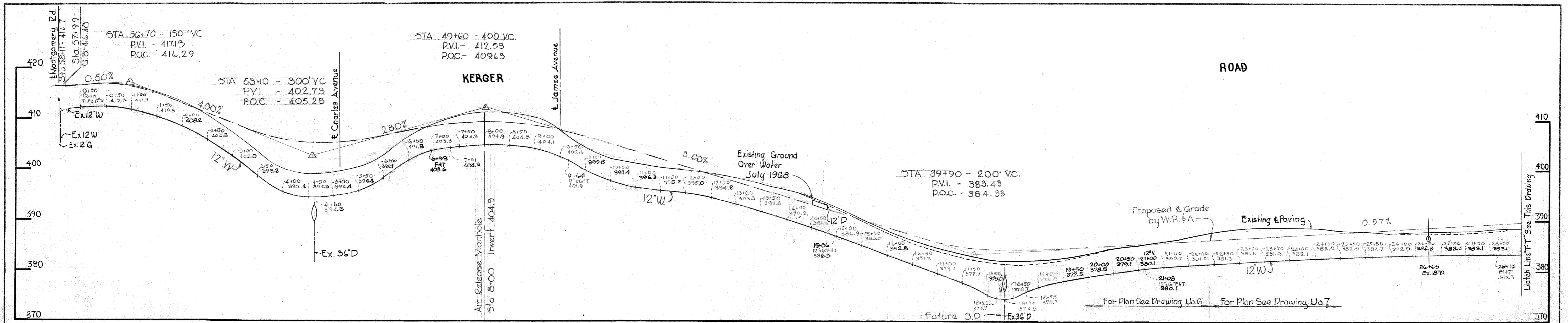
DRAWING NO. 10 OF 11
SCALE H-1"=100' V-1"=10'

JAN. 28, 1970 AS BUILT

W. O. 6021-2

266-W/10

WS



Kenneth A. McLeod

WHITMAN, REQUARDT & ASSOCIATES
ENGINEERS
1304 ST. PAUL ST.
BALTIMORE, MARYLAND

HOWARD COUNTY METROPOLITAN COMMISSION
APRIL 22, 1969
DATE
W. O. Libert
CHIEF ENGINEER

CONTRACT NO. 266-W

PROFILES OF
WATER MAINS

ELECTION DISTRICT
ELLCOTT CITY NO. 2

CONTRACT 266-W
DRAWING NO. 11 OF 11
SCALE H-1"=100'
V-1"=10'

W. O. 6021-2

JAN. 23, 1970 APRIL 23, 1969
AS BUILT

WS 266-W/11