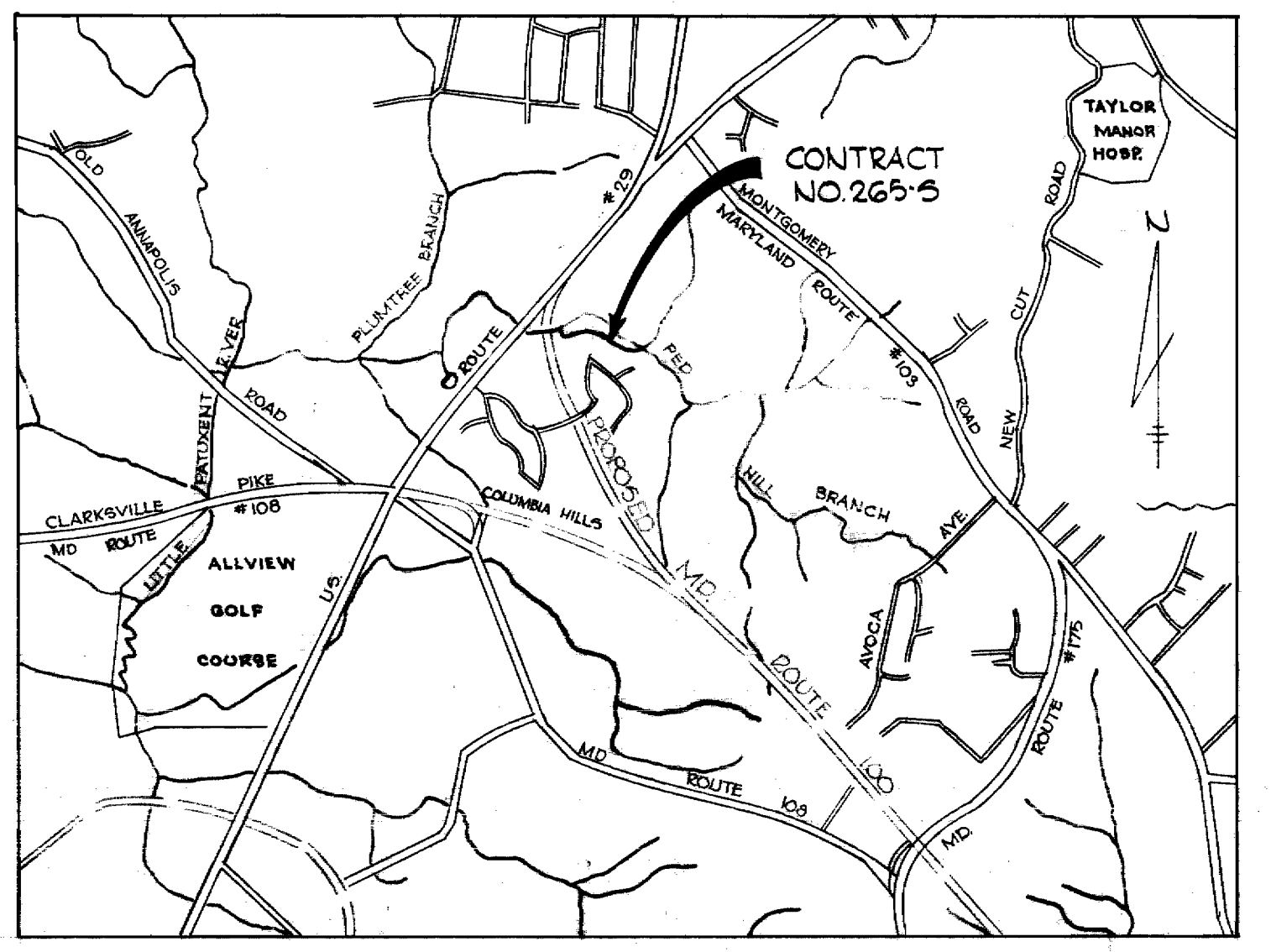
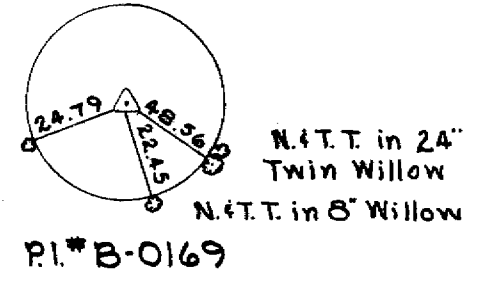
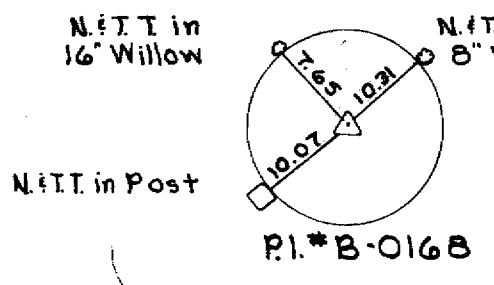
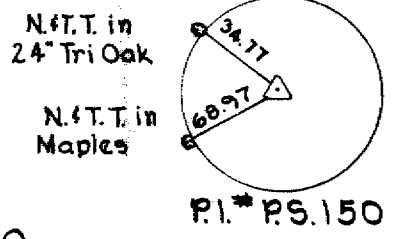
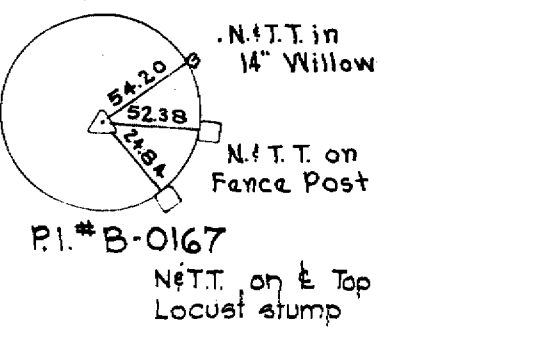


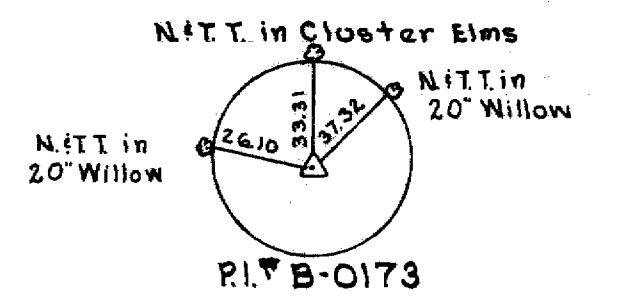
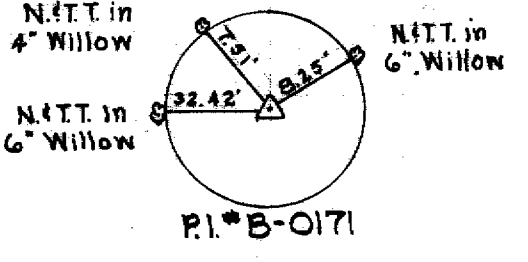
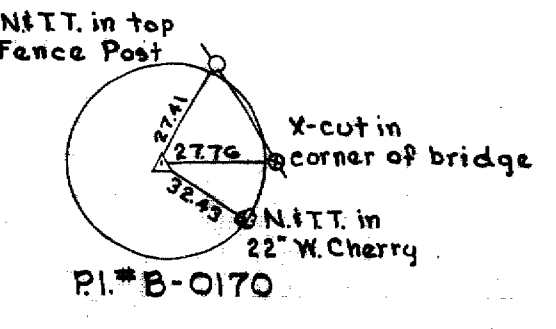
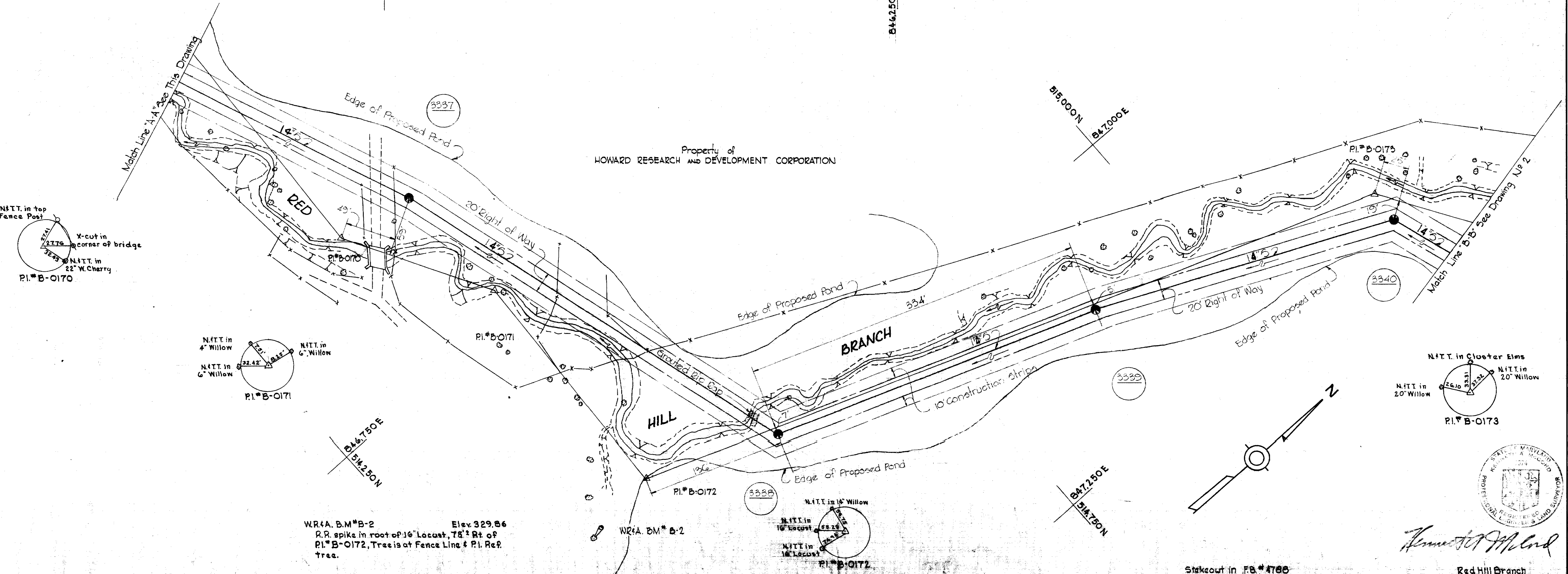
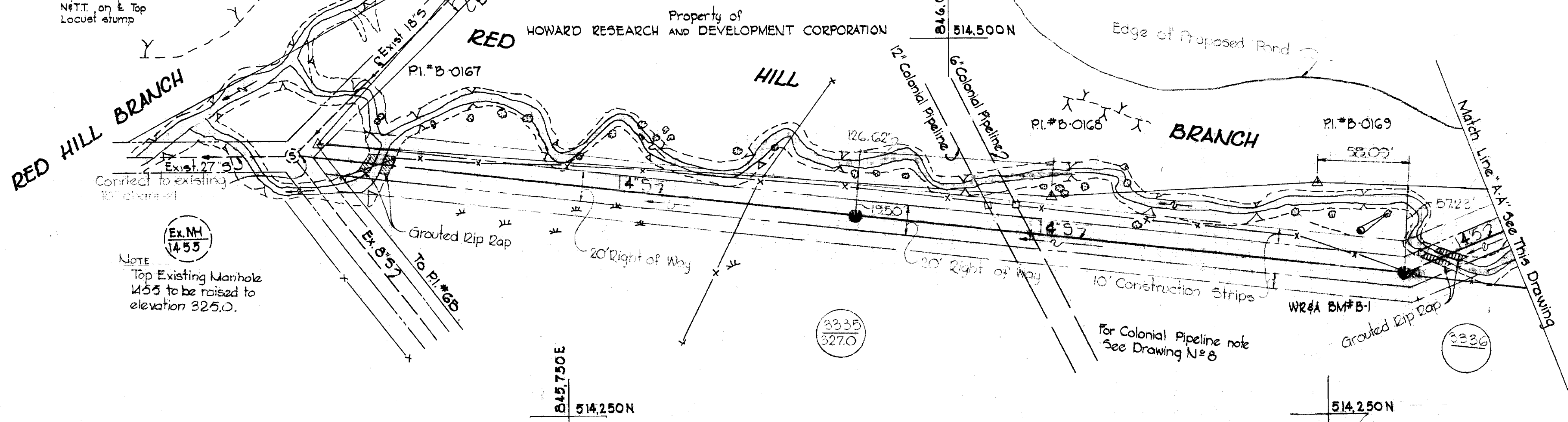
W.R.A. B.M.#96 Elev. 324.43
 R.R. spike in base of 36" Tri Locust, 25' Lt. of Sta. 3+30 between P.I.#5-149 & P.I.#5-150. 150' N. of int. Red Hill Branch & Plumtree Branch.

W.R.A. B.M.#B-1 Elev. 526.16
 R.R. Spike in crotch of 24" Twin oak 25' right of station 0+45 between P.I.#B-0169 and P.I.#B-0170

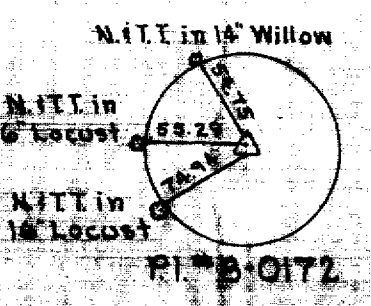


VICINITY MAP
 Scale: 1" = 1/4 mile

QUANTITIES	
12" Sewer	7600 LF
15" Sewer	3900 LF
16" Sewer	100 LF
18" Sewer	1100 LF



W.R.A. B.M.#B-2 Elev. 329.86
 R.R. spike in root of 16" Locust, 78' Rt. of P.I.#B-0172, Tree is at Fence Line & P.I. Ref. tree.



Stakeout in FB #4788
 Diary in FB #4789

Red Hill Branch
 Contract No. 265-5

WHITMAN, REQUARDT & ASSOCIATES
 ENGINEERS
 1304 ST. PAUL ST.
 BALTIMORE, MARYLAND

HOWARD COUNTY METROPOLITAN COMMISSION
 DATE 8/23/72 W. O. Gilbert CHIEF ENGINEER

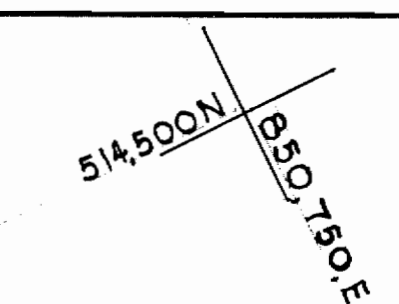
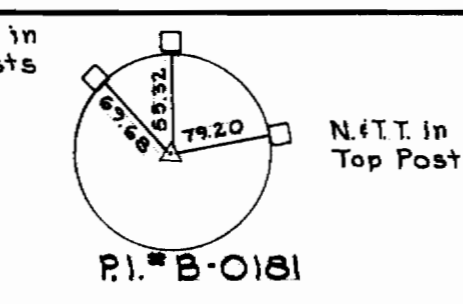
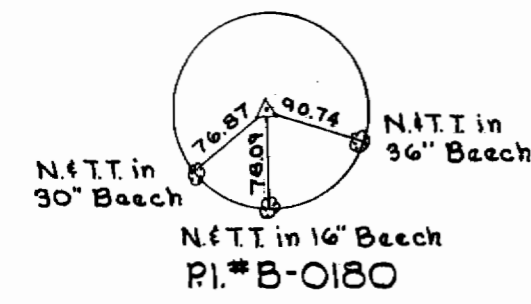
CONTRACT NO. 265-5

PLAN OF SEWER MAINS

ELECTION DISTRICT ELLICOTT CITY NO. 2

DRAWING NO. 1 OF 8

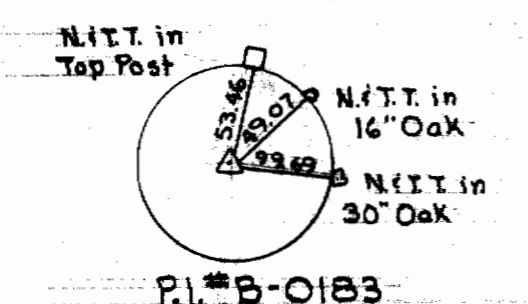
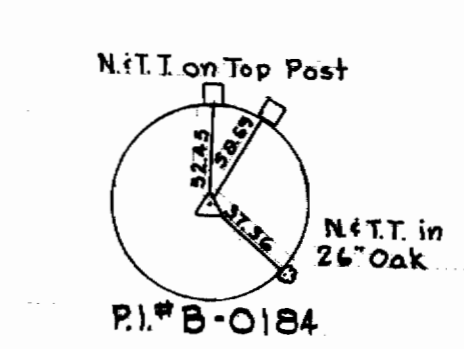
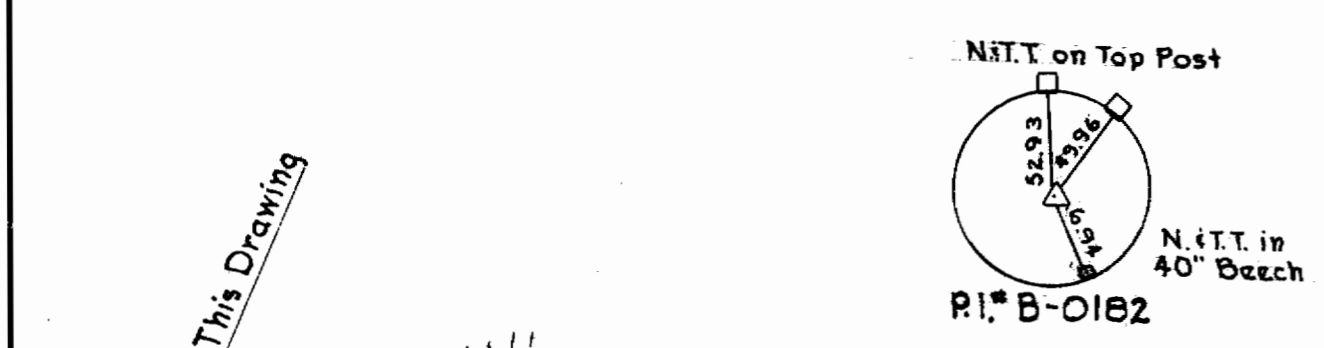
SCALE 1" = 50'



Match Line "D-D" See Drawing No. 2

Match Line "E-E" See This Drawing

Match Line "F-F" See Drawing No. 4



W.R. & A. B.M. #9
Elev. 351.36
R.R. spike in N. root of 40" Beech,
7' Rt. of P.I. # B-0182.

W.R. & A. B.M. #8
Elev. 344.79
R.R. spike in N. root of 40" Oak, 145'
Rt. of Sta. 4+0 between P.I. # B-0180
& P.I. # B-0181.

W.R. & A. B.M. #10
Elev. 358.57
R.R. spike in N. root of 26" Oak, 7'
Rt. of Sta. 0+38.2 between P.I. # B-
0184 & P.I. # B-0185.

GENERAL NOTES

1. Approximate location of existing mains are shown. The Contractor shall take all necessary precautions to protect existing mains and services and maintain uninterrupted supply. Any damage incurred shall be repaired immediately.
2. All pipe elevations shown are invert elevations.
3. The Contractor shall locate existing utilities a minimum of two weeks in advance of construction operations in vicinity of utilities.
4. For all standard details see standards bound in Specifications.
5. Build all manholes 1'-6" above existing ground unless otherwise noted.
6. All manholes shall be 4'-0" inside diameter.
7. Clear all utilities by a minimum of 6", clear all poles by 2'-0" minimum or tunnel as required.
8. Cost of Grouded Zip Rap to be included in the unit price bid for furnishing and laying of sewer pipe.
9. The Contractor shall provide a joint in each sewer main within 2'-0" of exterior manhole walls.



Howard C. Lewis

Red Hill Branch
Contract No. 265-5

WHITMAN, REQUARDT & ASSOCIATES
ENGINEERS
1304 ST. PAUL ST.
BALTIMORE, MARYLAND

HOWARD COUNTY METROPOLITAN COMMISSION
DATE Feb 3 1970 *W. O. Falwell*
CHIEF ENGINEER

CONTRACT NO. 265-S

PLAN OF
SEWER MAINS

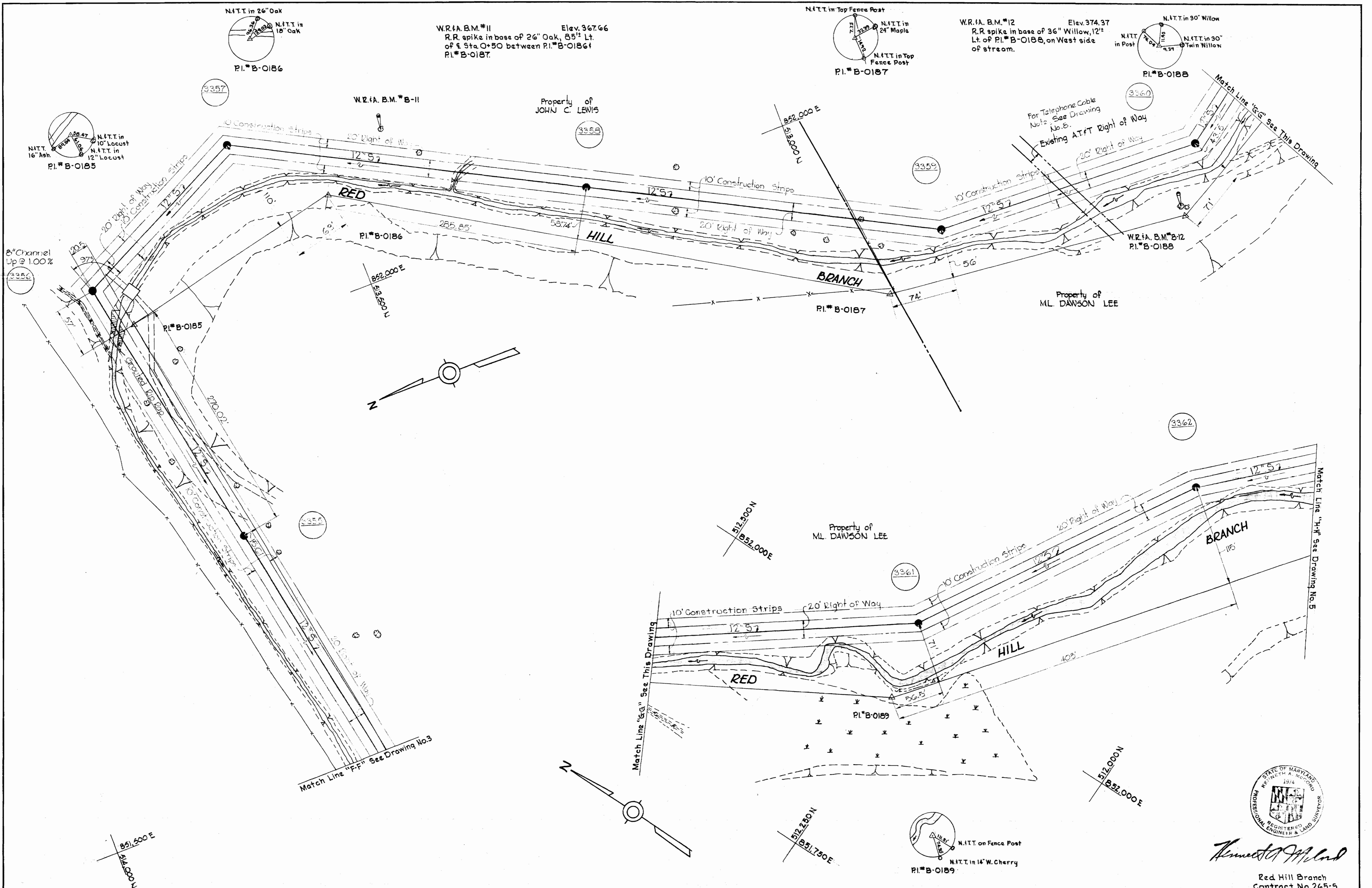
ELECTION DISTRICT
ELLCOTT CITY NO. 2

DRAWING
NO. 3
OF 8 SCALE
1"=50'

AS BUILT FB 4092, 4101
AUGUST 23, 1971

265-S/3
WS

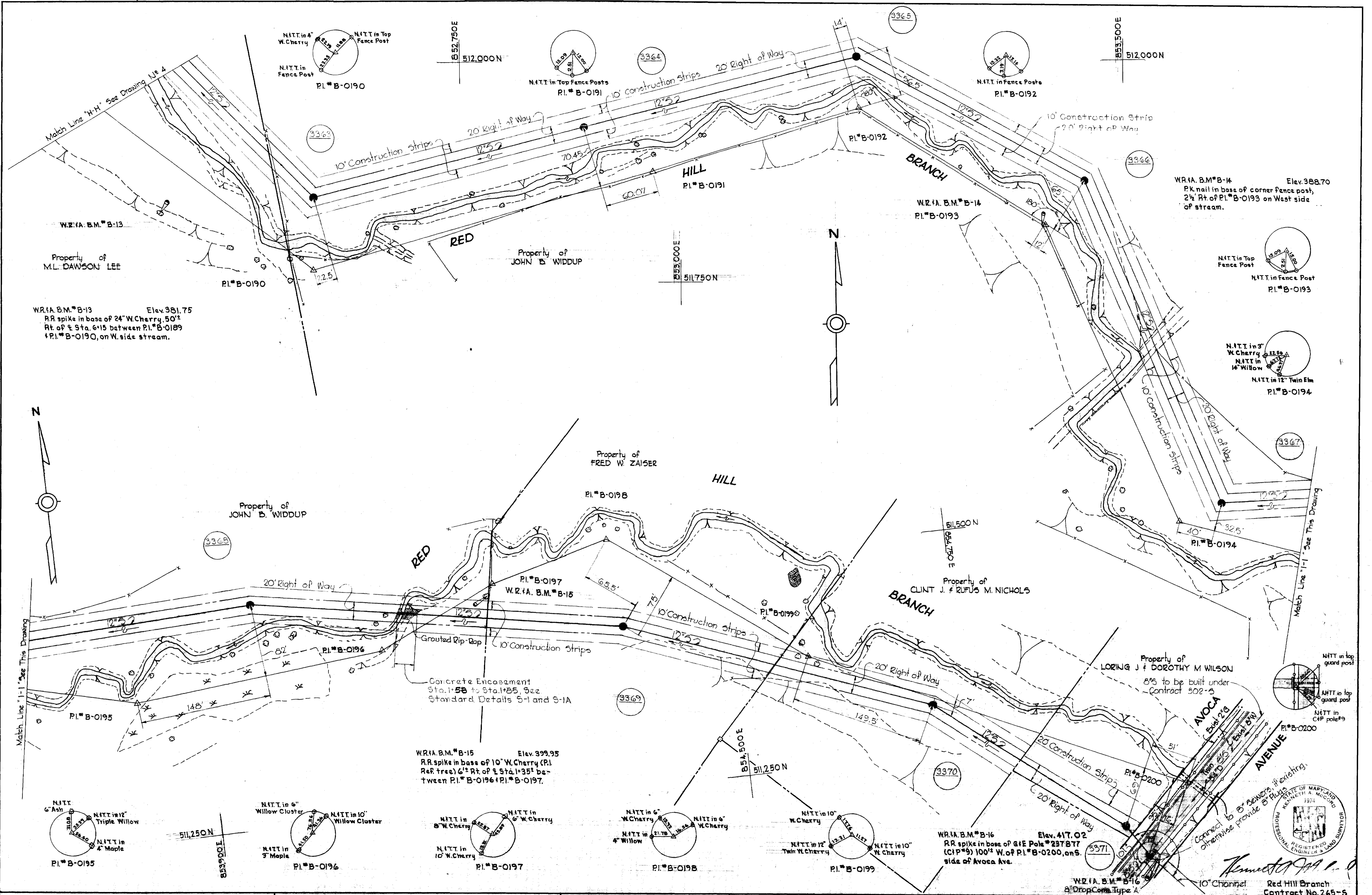
WS 265-5/4



WHITMAN, REQUARDT & ASSOCIATES ENGINEERS 1304 ST. PAUL ST. BALTIMORE, MARYLAND	HOWARD COUNTY METROPOLITAN COMMISSION Feb 3 1972 <i>W.O. FULTON</i> DATE CHIEF ENGINEER	CONTRACT NO. 265-S	PLAN OF SEWER MAINS	ELECTION DISTRICT ELLICOTT CITY NO. 2	DRAWING NO. 4 OF 8 SCALE 1"=50' \$12.488 \$12.487
---	---	--------------------	------------------------	--	--

265-515
WS

suspense



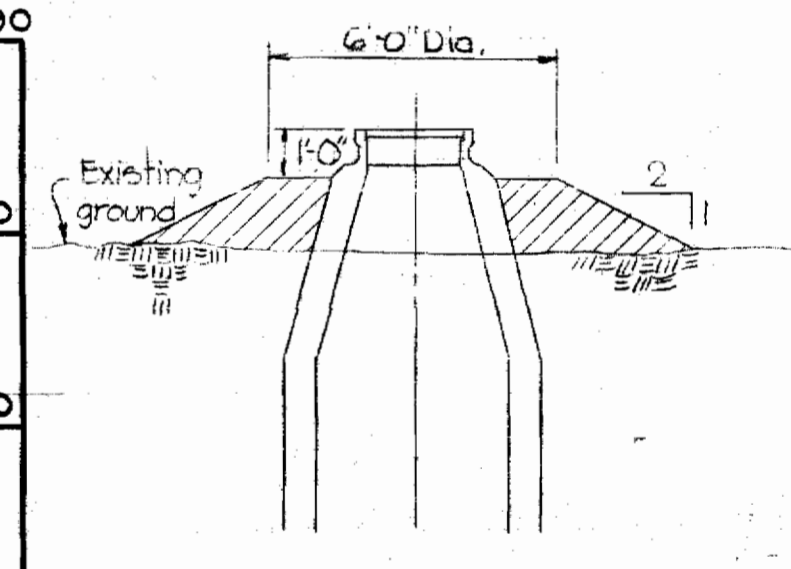
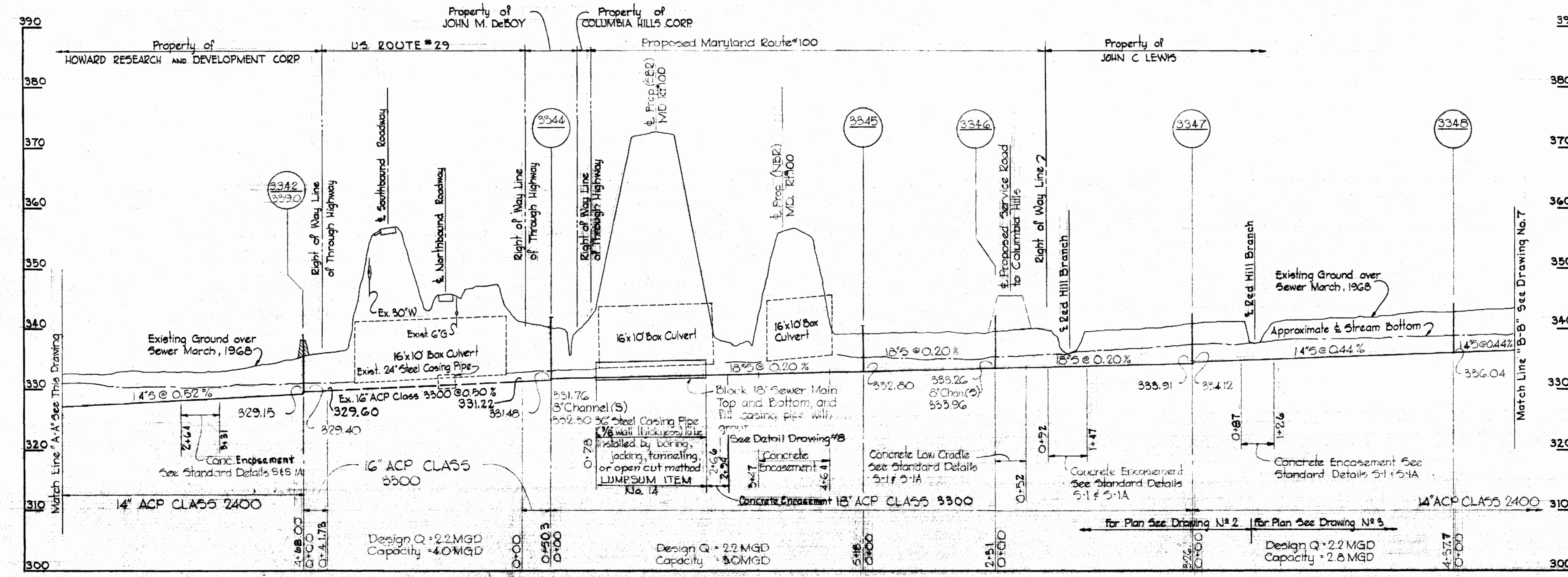
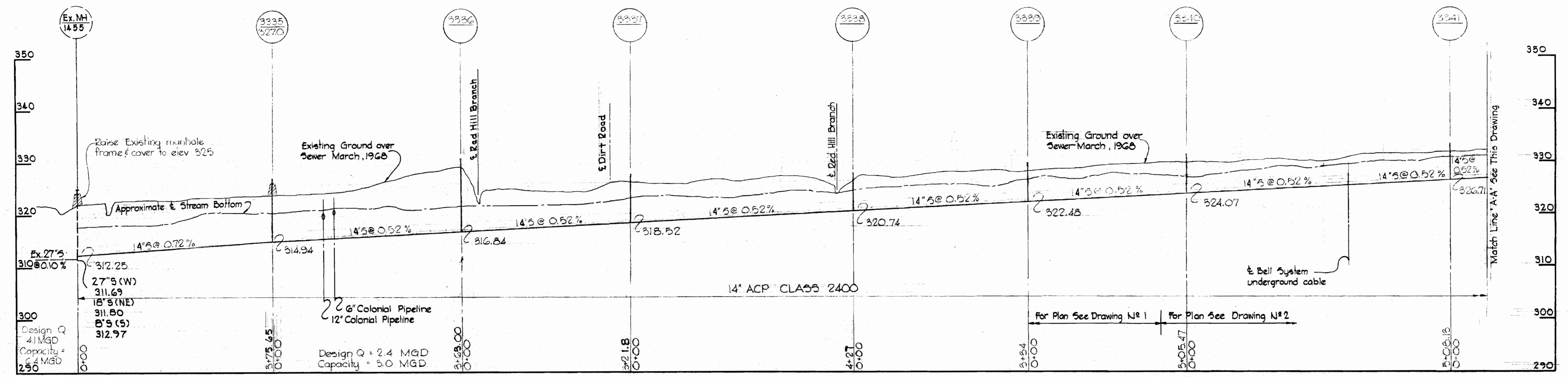
WHITMAN, REQUARDT & ASSOCIATES ENGINEERS 1304 ST. PAUL ST. BALTIMORE, MARYLAND	HOWARD COUNTY METROPOLITAN COMMISSION DATE Feb 3 1970 W. O. P. Chief Engineer	CONTRACT NO. 265-S	PLAN OF SEWER MAINS	ELECTION DISTRICT ELLICOTT CITY NO. 2	DRAWING NO. 5 OF 8 SCALE 1"=50' FEB 4 1970
---	---	--------------------	------------------------	--	--

SUSPENSE

SUSPENSE

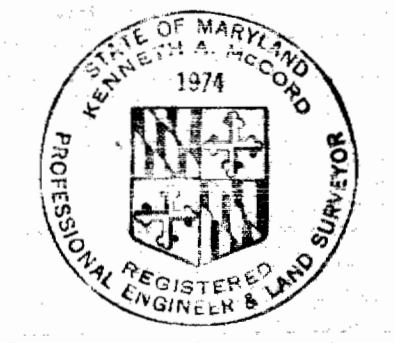
SUSPENSE

Property of
HOWARD RESEARCH AND DEVELOPMENT CORPORATION



**TYPICAL FILL DETAIL
AROUND M.H.**
Scale 1/4" = 1'-0"

Note:
Payment for fill around manholes to be included in Vertical Foot payment for constructing manholes.



Kenneth A. McCord

WHITMAN, REQUARDT & ASSOCIATES
ENGINEERS
1304 ST. PAUL ST.
BALTIMORE, MARYLAND

HOWARD COUNTY METROPOLITAN COMMISSION
DATE 12-3-1970 *W. O. Pulbert*
CHIEF ENGINEER

CONTRACT NO. 265-S

**PROFILES OF
SEWER MAINS**

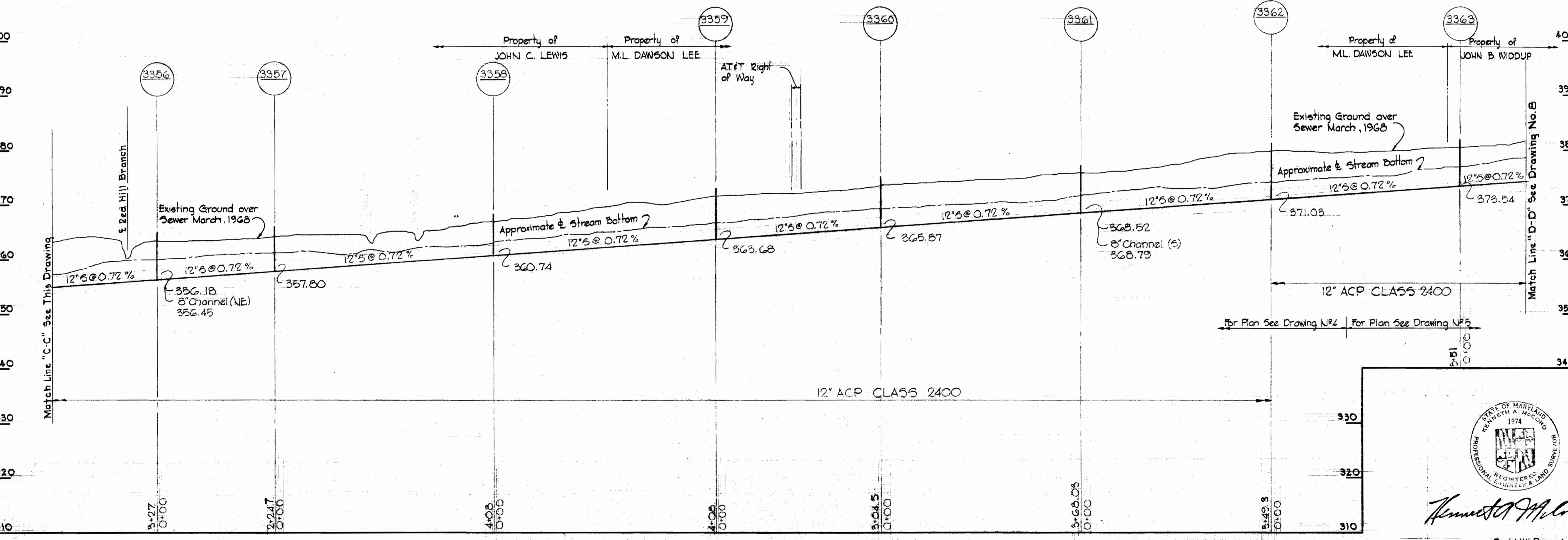
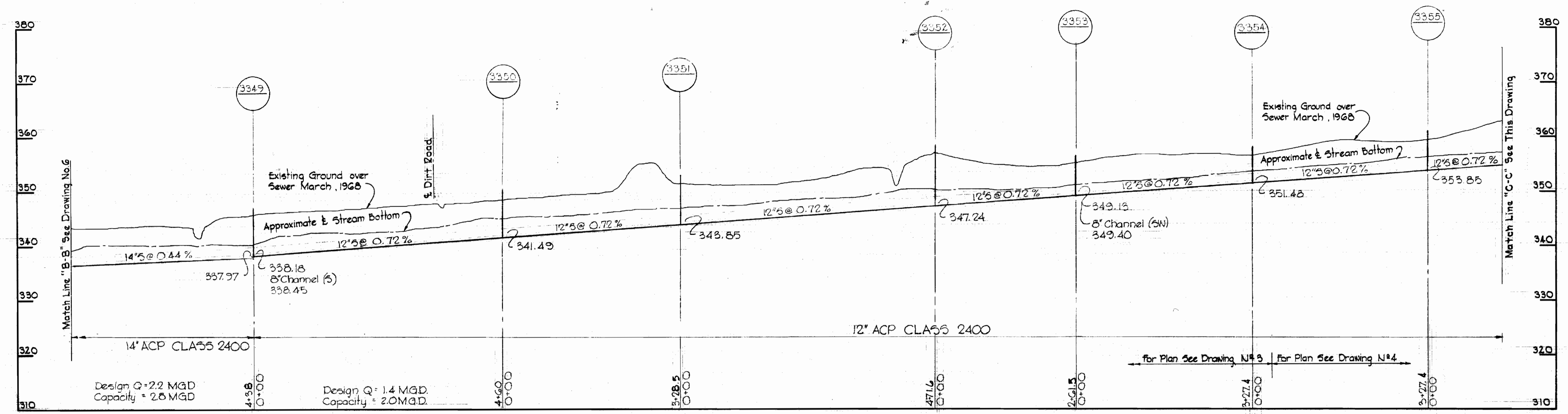
**ELECTION DISTRICT
ELLCOTT CITY NO. 2**

DRAWING NO. 6 OF 8
SCALE H: 1" = 100' V: 1" = 10'

AS BUILT AUGUST 23, 1971

WS 265-S/6

WS 265-5/7



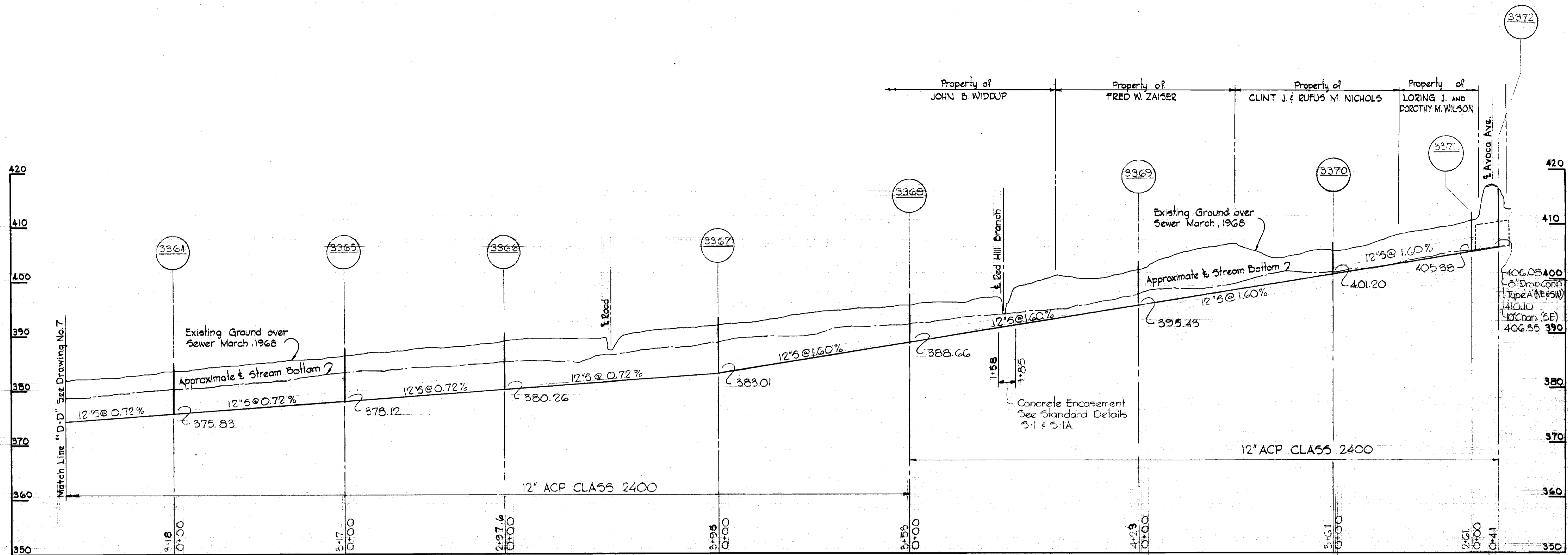
Kenneth A. McLeod

Red Hill Branch
Contract No. 265-5

WHITMAN, REQUARDT & ASSOCIATES ENGINEERS 1304 ST. PAUL ST. BALTIMORE, MARYLAND	HOWARD COUNTY METROPOLITAN COMMISSION Feb 3 1970 <i>W. O. Palmer</i> <small>DATE CHIEF ENGINEER</small>	CONTRACT NO. 265-S	PROFILES OF SEWER MAINS	ELECTION DISTRICT ELLICOTT CITY NO. 2	DRAWING NO. 7 OF 8 SCALE H:V = 1":10'
--	--	---------------------------	--------------------------------	--	---

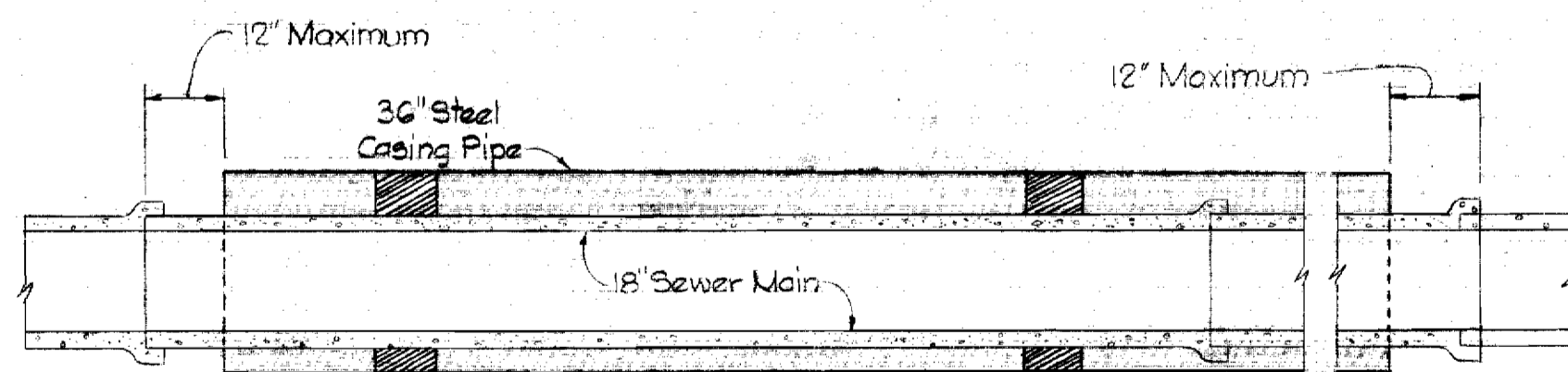
W. O. G021-2

AS BUILT AUGUST 23, 1971

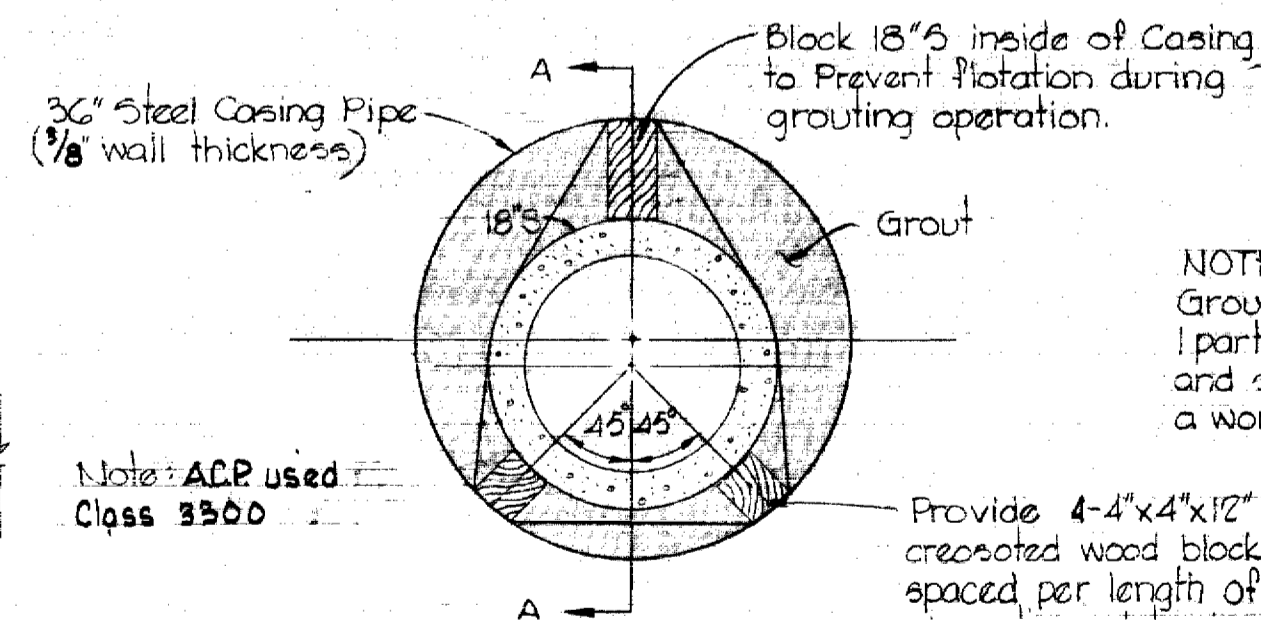


NOTE:
The Contractor shall notify the Colonial Pipeline Company 72 hours in advance of excavation in the vicinity of the Colonial Pipeline Company Right of Way by calling Colonial Division Office, Richmond, Va. Area Code 703.282-9771 or Mr. S.H. Grumlich, Area Supervisor Balto. Maryland 787-2295

NOTE:
The Contractor shall notify the Telephone Company prior to any construction activities in the vicinity of the telephone cables by calling collect at 685-0400 in Baltimore, Maryland.



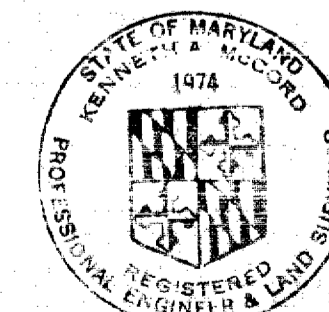
SECTION A-A
Scale: 3/8"=1'-0"



DETAIL
36" CASING PIPE
Scale: 3/4"=1'-0"

NOTE:
Grout shall be 4 parts sand 1 part cement, 2 parts flyash and sufficient water to make a workable mix.

Provide 4-4"x4"x12" long creosoted wood blocks equally spaced per length of sewer pipe, strapped to pipe with 1/2"x2" steel bands.



Kenneth J. McLeod

Red Hill Branch
Contract No. 265-5

WHITMAN, REQUARDT & ASSOCIATES ENGINEERS 1304 ST. PAUL ST. BALTIMORE, MARYLAND	HOWARD COUNTY METROPOLITAN COMMISSION <i>Feb 3 1970</i> DATE <i>W O Falbert</i> CHIEF ENGINEER	CONTRACT NO. 265-S	PROFILE OF SEWER MAINS	ELECTION DISTRICT ELLCOTT CITY NO. 2	DRAWING NO. 8 OF 8 SCALE H: 1"=100' V: 1"=10'
---	---	--------------------	---------------------------	---	---

W. O. GOZI-2

AS BUILT AUGUST 23, 1971

WS 265-S/8