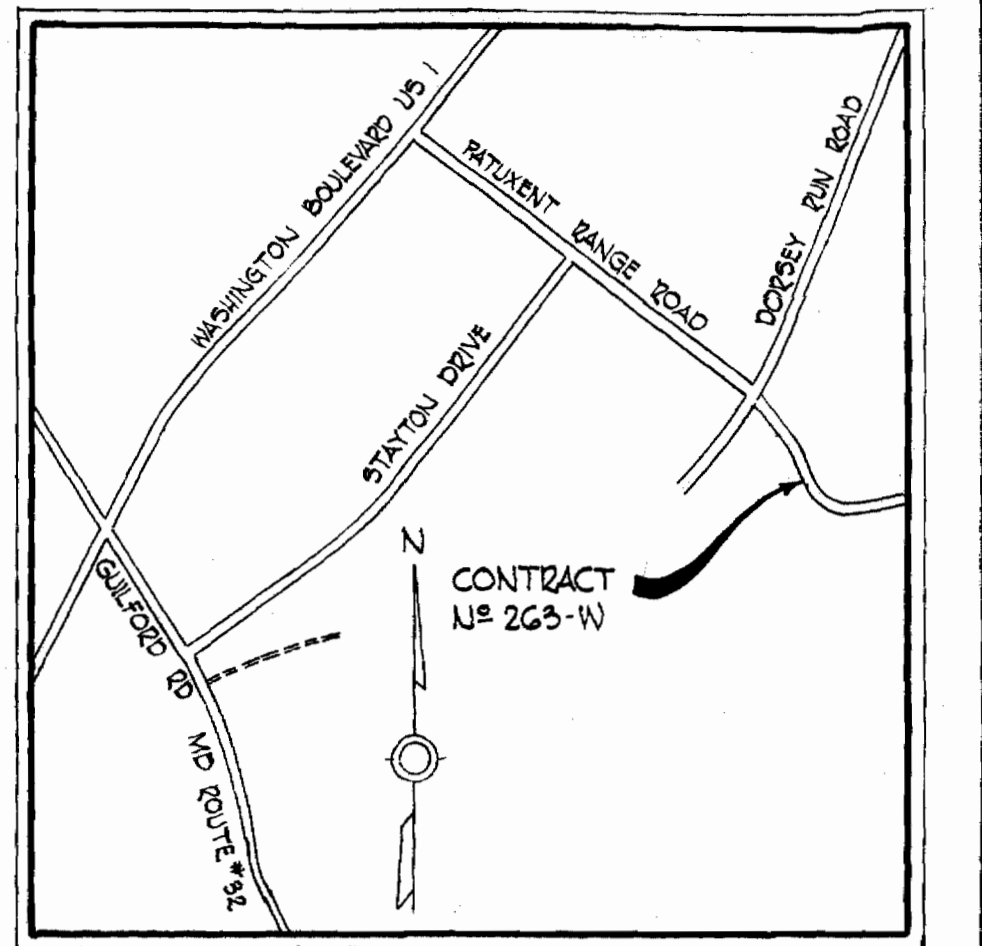
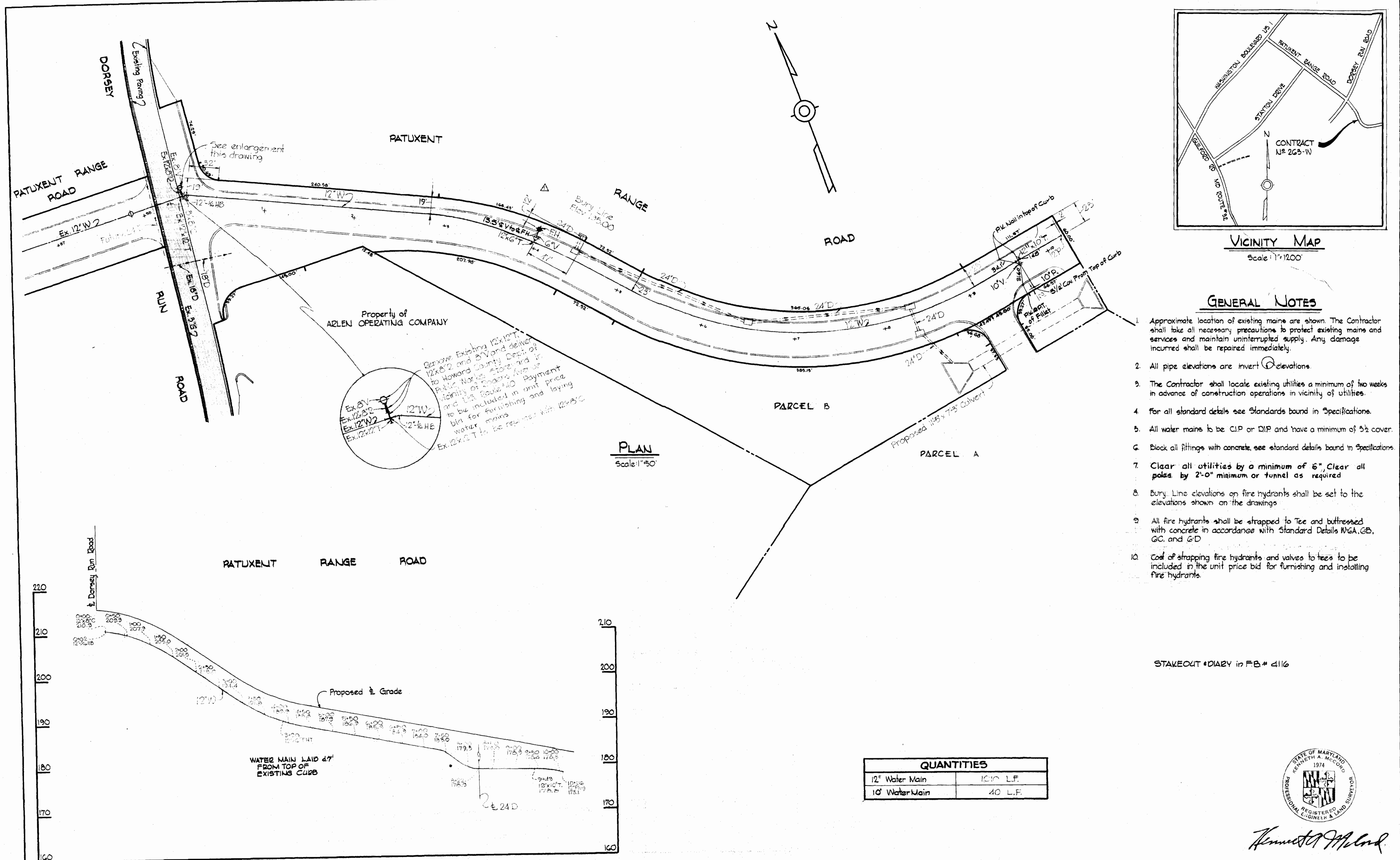


263-W/1

WS



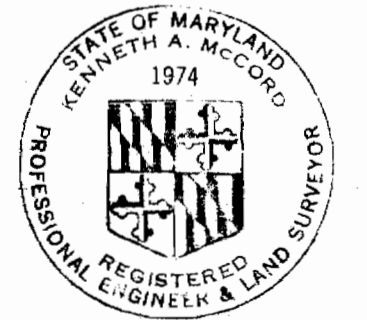
VICINITY MAP
Scale: 1"=1200'

GENERAL NOTES

1. Approximate location of existing mains are shown. The Contractor shall take all necessary precautions to protect existing mains and services and maintain uninterrupted supply. Any damage incurred shall be repaired immediately.
2. All pipe elevations are invert elevations.
3. The Contractor shall locate existing utilities a minimum of two weeks in advance of construction operations in vicinity of utilities.
4. For all standard details see Standards bound in Specifications.
5. All water mains to be CIP or DIP and have a minimum of 3 1/2' cover.
6. Block all fittings with concrete, see standard details bound in Specifications.
7. Clear all utilities by a minimum of 6". Clear all poles by 2'-0" minimum or tunnel as required.
8. Bury Line elevations on fire hydrants shall be set to the elevations shown on the drawings.
9. All fire hydrants shall be strapped to Tee and buttressed with concrete in accordance with Standard Details WGA, GB, GC, and GD.
10. Cost of strapping fire hydrants and valves to tees to be included in the unit price bid for furnishing and installing fire hydrants.

STAKEOUT DIARY in P.B.# 4116

QUANTITIES	
12" Water Main	1210 L.F.
10" Water Main	40 L.F.



Kenneth A. McLeod

PROFILE
Scale: 1/4"=100'
1/4"=10'

6-16-69	Added Fire Hydrant at Water Station 3+30
NS Date	Revision

Patuxent Industrial Park
Contract NS 263-W

WHITMAN, REQUARDT & ASSOCIATES ENGINEERS 1304 ST. PAUL ST. BALTIMORE, MARYLAND	HOWARD COUNTY METROPOLITAN COMMISSION DATE: <u>AUG. 5, 1969</u> <i>W. O. Gilman</i> CHIEF ENGINEER	CONTRACT NO. 263-W	PLAN AND PROFILE OF WATER MAINS ELECTION DISTRICT OF GUILFORD NO. 6	DRAWING NO. 1 OF 1	SCALE AS SHOWN 478-481 477-486 477-491
--	--	---------------------------	--	---------------------------	--