

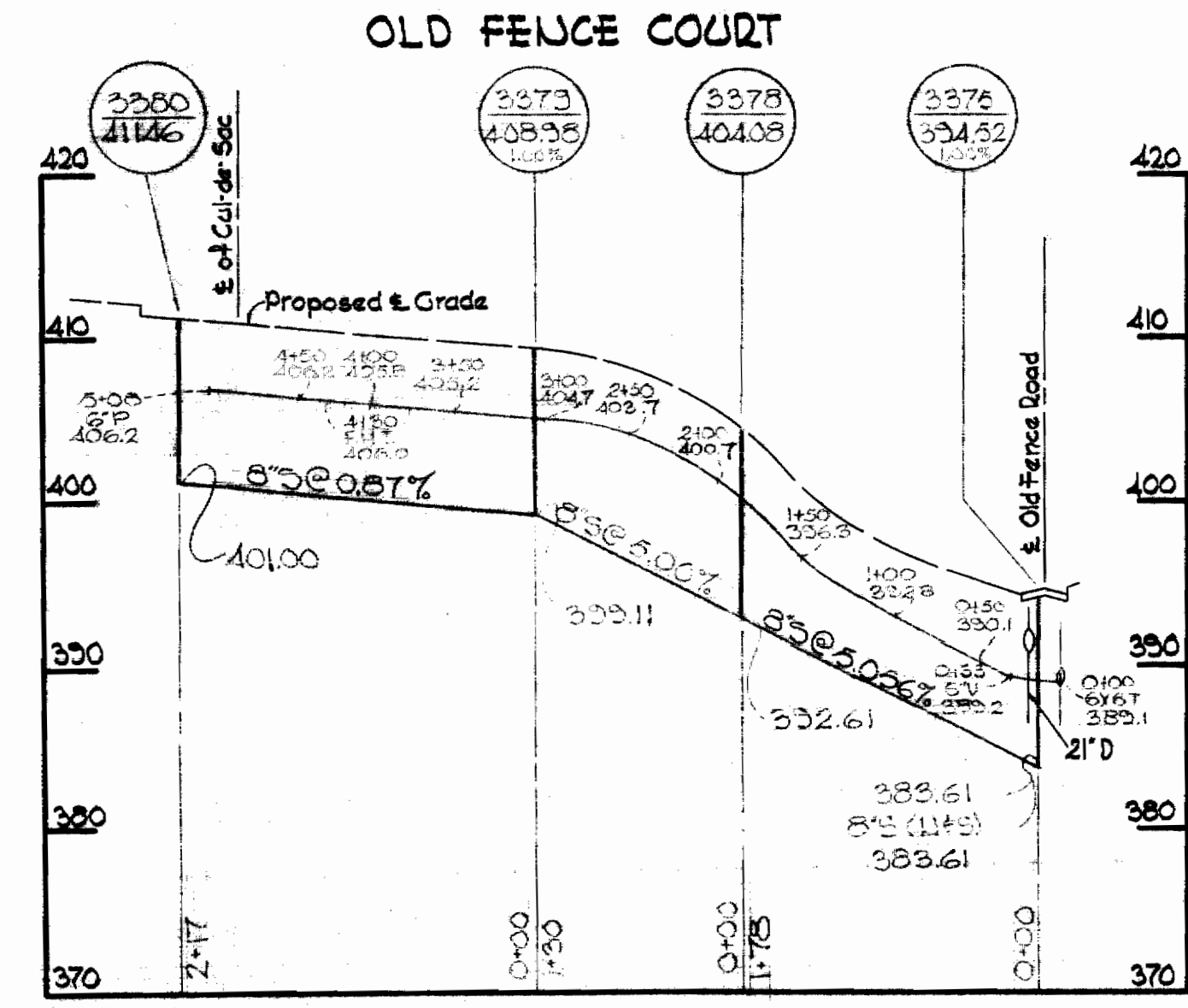
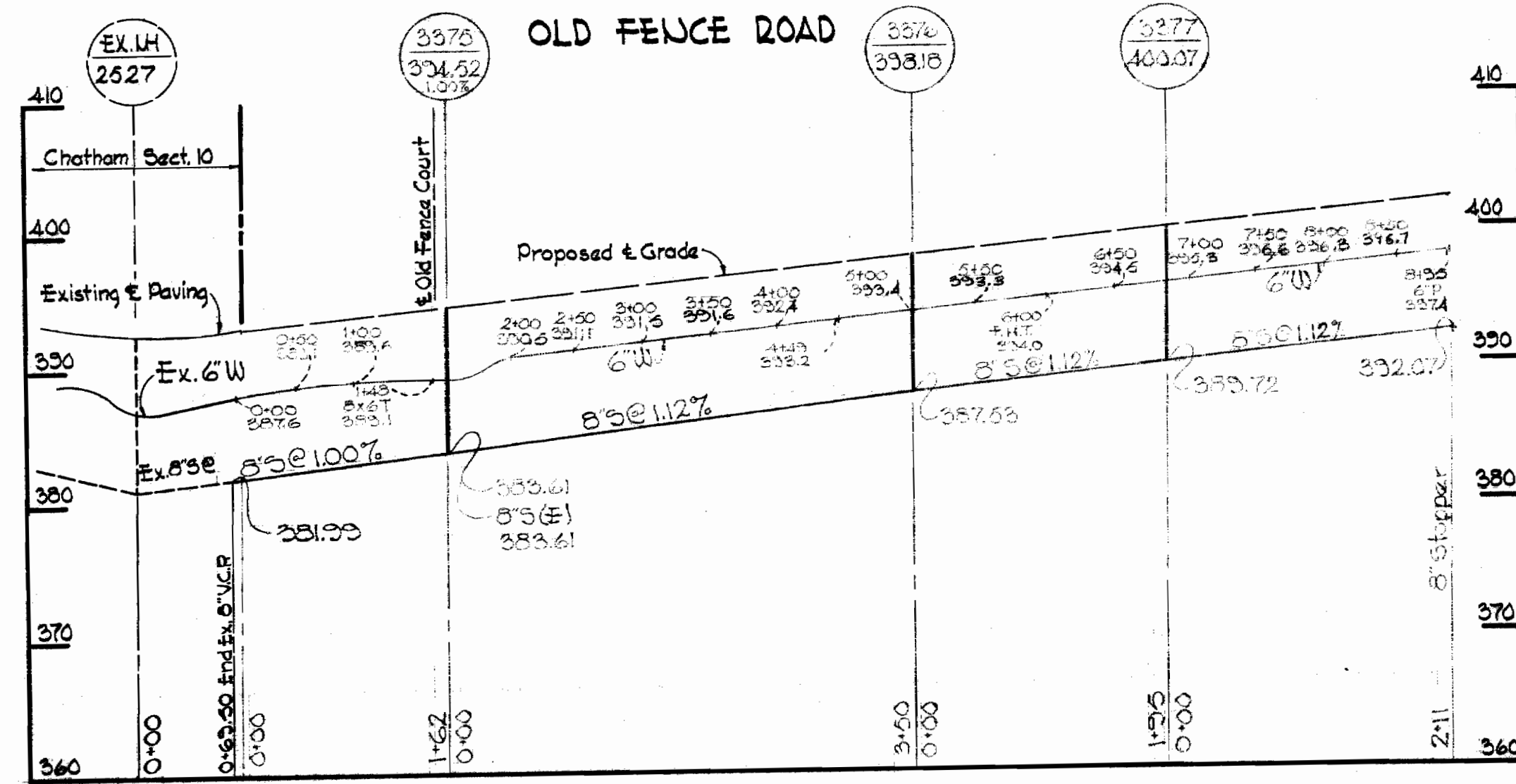
VICINITY MAP  
Scale: 1" = 1/2 mile

**GENERAL NOTES**

1. Approximate location of existing mains are shown. The Contractor shall take all necessary precautions to protect existing mains and services and maintain uninterrupted supply. Any damage incurred shall be repaired immediately.
2. All pipe elevations shown are invert elevations.
3. The Contractor shall locate existing utilities a minimum of two weeks in advance of construction operations in vicinity of utilities.
4. For all standard details see standards bound in specifications.
5. All water mains to be C.I.P. or D.I.P. and have a minimum of 3 1/2' cover.
6. Block all fittings with concrete, see standard details bound in Specifications.
7. Bury line elevations on fire hydrants shall be set to elevations shown on drawing and directed by the Engineer in the field.
8. All fire hydrants shall be strapped in accordance with Standard Details W-5, W-6, and W-6A.
9. Cost of Strapping fire hydrants and valves to tee to be included in the unit price bid for furnishing and laying of water mains.
10. All fire hydrants shall be buttressed with concrete in accordance with Standard Detail W-4.
11. Clear all utilities by a minimum of 6', clear all poles by 20' minimum or tunnels required.
12. The Contractor shall provide a joint in all sewer mains within 20' of exterior manhole walls.
13. All manholes shall be 40" inside diameter.

AS BUILT NOTE:  
COVER OVER ALL SEWER HOUSE COLLECTIONS TAKEN FROM TOP OF BOARD.

PLAN  
Scale: 1" = 50'



PROFILES  
Scale: Horz. 1" = 100'  
Vert. 1" = 10'

A.C. Pipe Used



*Kenneth J. M. Lind*

Contract No. 262-WS  
Chatham Section 12

WS 262-WS/1

WHITMAN, REQUARDT & ASSOCIATES ENGINEERS 1304 ST. PAUL ST. BALTIMORE, MARYLAND	HOWARD COUNTY METROPOLITAN COMMISSION 9-20-68 <i>W. O. Felbert</i> DATE CHIEF ENGINEER	CONTRACT NO. 262 WS	PLAN AND PROFILE OF WATER & SEWER MAINS	ELECTION DISTRICT ELLICOTT CITY NO. 2	DRAWING NO. 1 OF 1	SCALE AS SHOWN	6-50-42 7-50-42 6-50-43 7-50-43
---	---	---------------------	--	--	--------------------	----------------	--