

suspense

suspense

1/5M-WS/1

WS



# CONTRACT C-259W&S

## HOWARD COUNTY METROPOLITAN COMMISSION ELLICOTT CITY, MARYLAND

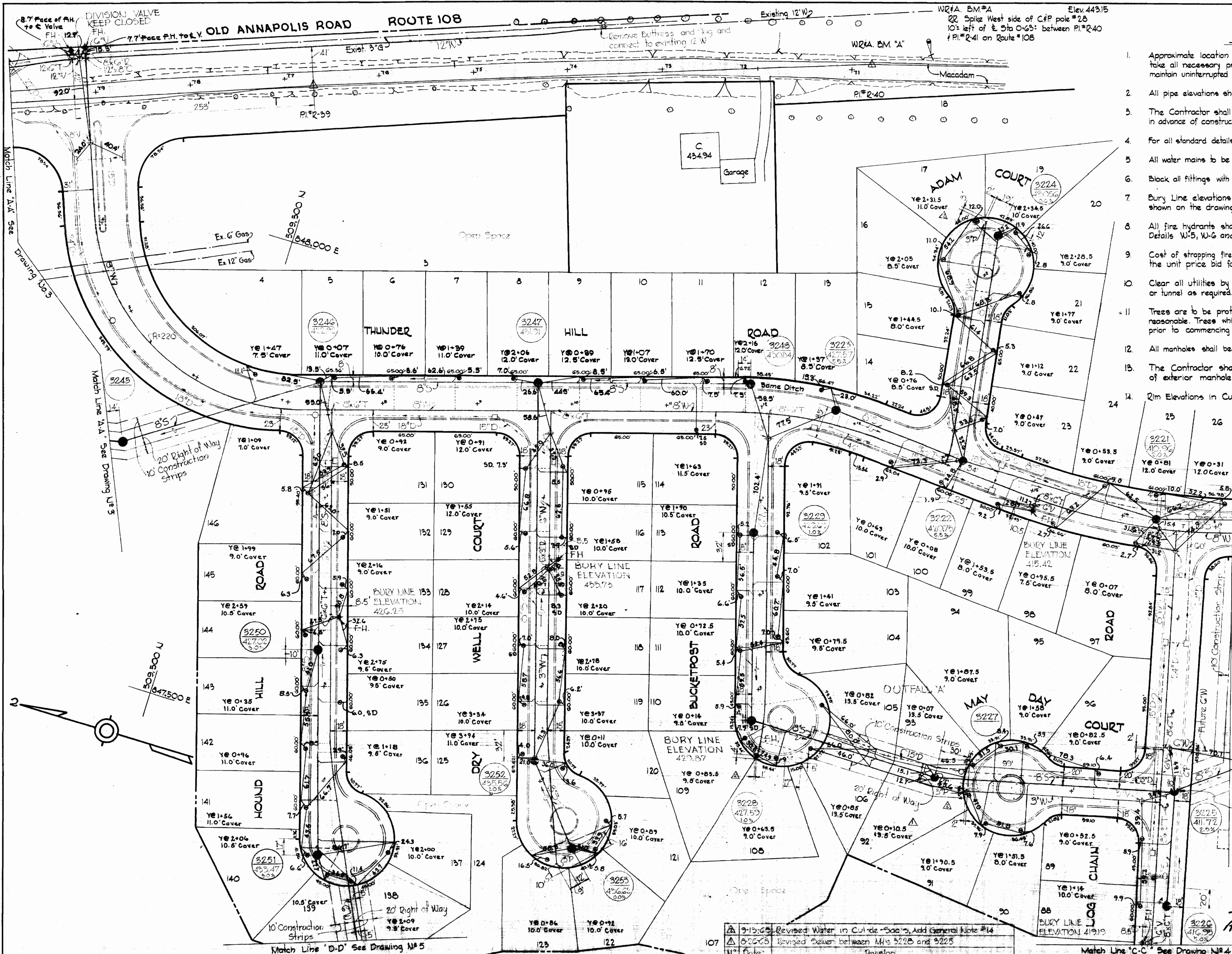
AS BUILT  
STAKEOUT IN FB #42B2 & #42B1  
DIARY IN FB #4252



WHITMAN, REQUARDT & ASSOCIATES ENGINEERS 1304 ST. PAUL ST. BALTIMORE, MARYLAND	HOWARD COUNTY METROPOLITAN COMMISSION DATE: 8-5-68 [Signature] CHIEF ENGINEER	C-259W&S PLAN OF WATER & SEWER MAIN	COLUMBIA VILLAGE OF OAKLAND MILLS DISTRICT GUILFORD NO. 6	DRAWING SCALE NO. 1 OF 2 1" = 600' AS BUILT
---	--	---	---	--

W.O. 60232





- ### GENERAL NOTES
1. Approximate location of existing mains are shown. The Contractor shall take all necessary precautions to protect existing mains and services and maintain uninterrupted supply. Any damage incurred shall be repaired immediately.
  2. All pipe elevations shown are invert  $\ominus$  elevations.
  3. The Contractor shall locate existing utilities a minimum of two weeks in advance of construction operations in vicinity of utilities.
  4. For all standard details see standards bound in Specifications.
  5. All water mains to be C.I.P. or D.I.P. and have a minimum of 3' cover.
  6. Block all fittings with concrete. See standard details bound in Specifications.
  7. Bury Line elevations on fire hydrants shall be set to the elevations shown on the drawings.
  8. All fire hydrants shall be strapped in accordance with Standard Details W-5, W-6 and W-6A.
  9. Cost of strapping fire hydrants and valves to trees to be included in the unit price bid for furnishing and laying of water mains.
  10. Clear all utilities by a minimum of 6', clear all poles by 2'-0" minimum or tunnel as required.
  11. Trees are to be protected from damage to the maximum extent reasonable. Trees which are to remain will be marked by the Engineer prior to commencing of construction operations.
  12. All manholes shall be 4'-0" inside diameter.
  13. The Contractor shall provide a joint in all sewer mains within 2'-0" of exterior manhole walls.
  14. Rim Elevations in Cui-de-Sacs to be set by others.

MATERIALS TO BE FURNISHED BY THE COMMISSION

ITEM	QUANTITY
3" V	10
6" V	19
8" V	17
12" V	5
Fire Hydrants	17
12"x8" Tapping Sleeve and Valve	1



*Kenneth A. McCord*  
Thunder Hill  
Contract No. C-259-WB5

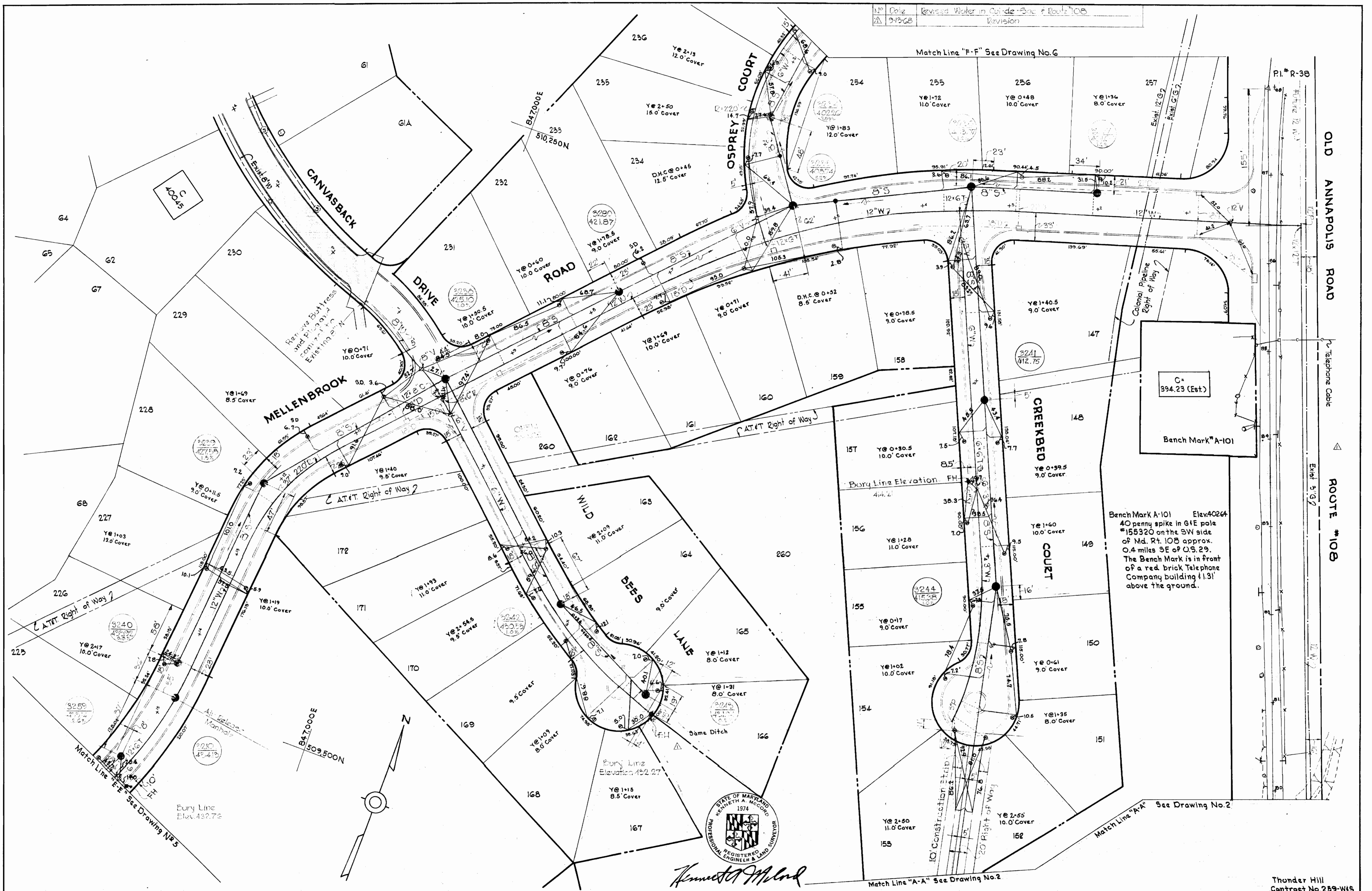
- 3225 Revised Water in Cui-de-Sacs, Add General Note #14
- 3226 Revised Sewer between MIs 3225 and 3225

<b>WHITMAN, REQUARDT &amp; ASSOCIATES</b> ENGINEERS 1304 ST. PAUL ST. BALTIMORE, MARYLAND	<b>HOWARD COUNTY METROPOLITAN COMMISSION</b> DATE: 8.5.68 <i>W. O. Palmb</i> CHIEF ENGINEER	CONTRACT NO. C-259-WB5	<b>PLAN OF</b> <b>WATER &amp; SEWER MAINS</b>	<b>COLUMBIA</b> <b>VILLAGE OF OAKLAND MILLS</b> <b>ELECTION DISTRICT GUILFORD NO. 6</b>	<b>DRAWING</b> NO. 2 OF 12	<b>SCALE</b> 1" = 50' 509-485 508-485
--	--	------------------------	--	---	----------------------------------	--

WS 259-WB5/2

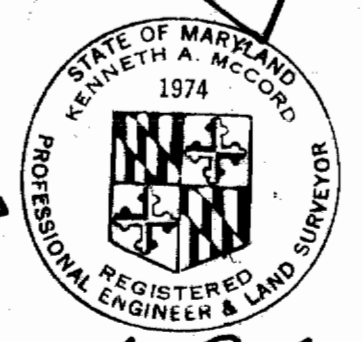


No. 202 Revised Water in Outside of Box & Route 108  
 9-13-68 Revision



C-394.23 (Est.)  
 Bench Mark A-101

Bench Mark A-101 Elev. 402.64  
 40 penny spike in G.I.E. pole #155320 on the SW side of Md. Rt. 108 approx. 0.4 miles SE of O.S. 29. The Bench Mark is in front of a red brick Telephone Company building 1.31' above the ground.

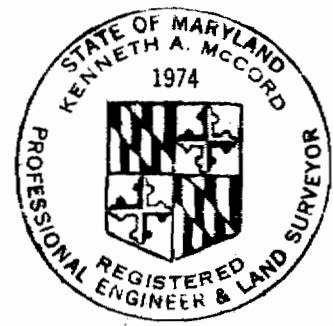
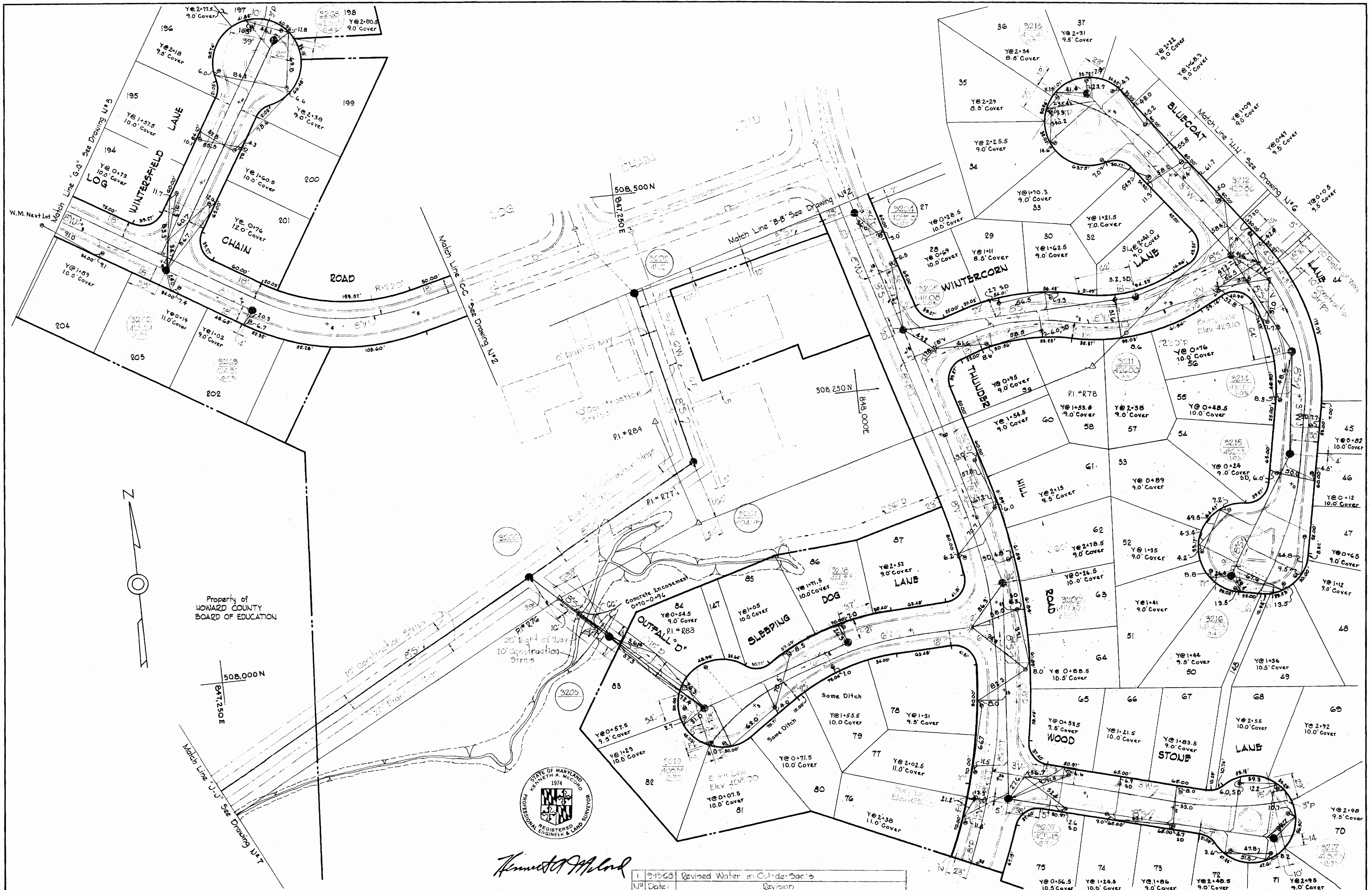


*Kenneth A. McCord*

WHITMAN, REQUARDT & ASSOCIATES ENGINEERS 1304 ST. PAUL ST. BALTIMORE, MARYLAND	HOWARD COUNTY METROPOLITAN COMMISSION 8-15-68 <i>ed o'neill</i> CHIEF ENGINEER	CONTRACT NO. C-259-WBS	PLAN OF WATER & SEWER MAINS	COLUMBIA VILLAGE OF OAKLAND MILLS ELECTION DISTRICT GUILFORD NO. 6	DRAWING NO. 3 OF 12 SCALE 1" = 50' Thunder Hill Contract No. 259-W15
---	---	------------------------	--------------------------------	--	--

3/SM-627





*Kenneth A. McCord*

1	9-13-63	Revised Water in Cul-de-Sacs
N <sup>o</sup>	Date:	Revision

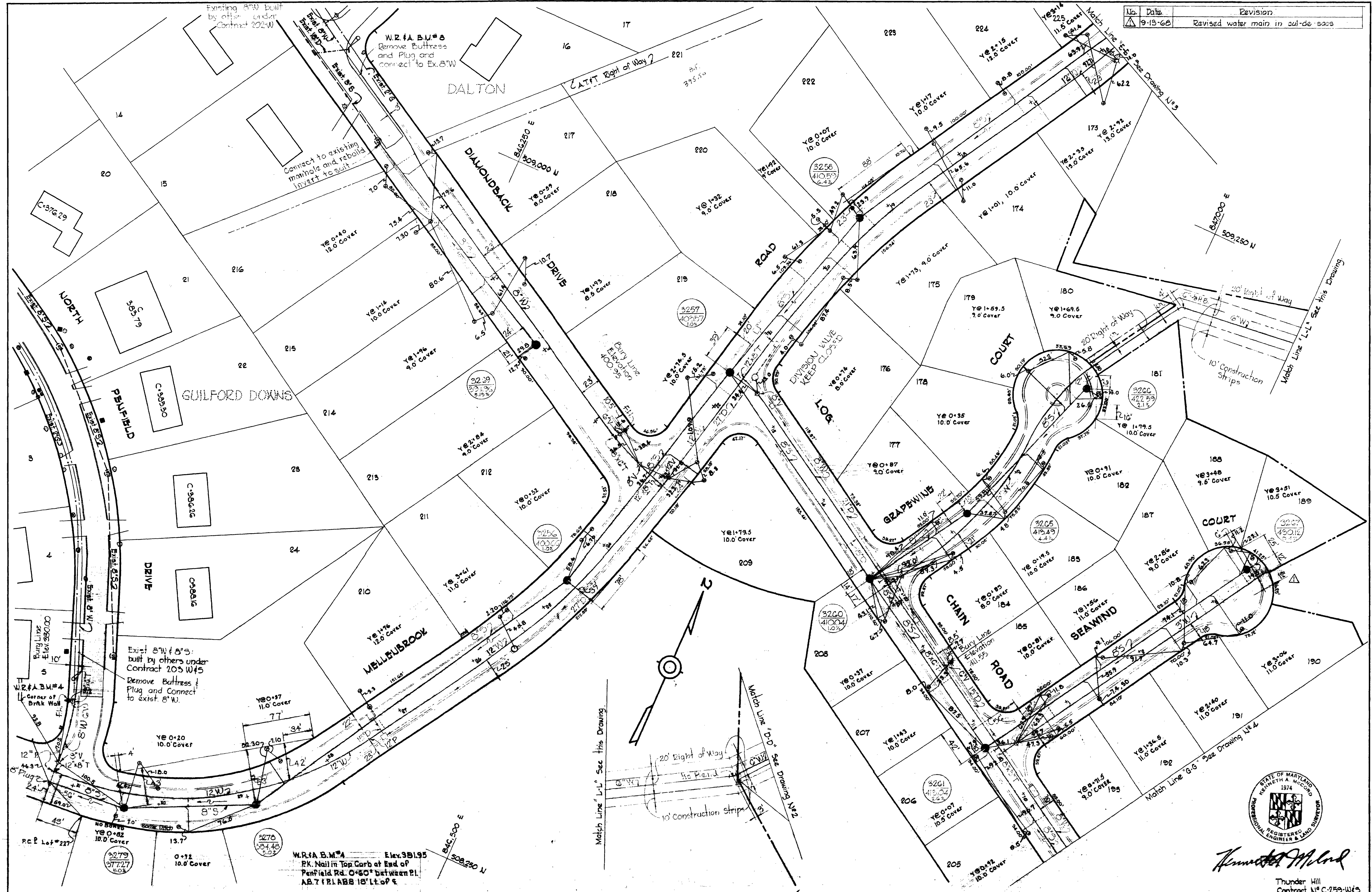
WHITMAN, REQUARDT & ASSOCIATES ENGINEERS 1304 ST. PAUL ST. BALTIMORE, MARYLAND	HOWARD COUNTY METROPOLITAN COMMISSION 8-5-68 <i>W. O. Galt</i> DATE CHIEF ENGINEER	CONTRACT NO. C-259-W&S	PLAN OF WATER & SEWER MAINS	COLUMBIA VILLAGE OF OAKLAND MILLS ELECTION DISTRICT GUILFORD NO. 6	DRAWING NO. 4 OF 12	SCALE 1" = 50'

AS BUILT April 3, 1969

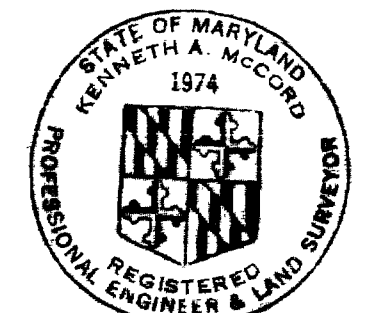
259-WS/A  
NS



No.	Date	Revision
1	9-13-68	Revised water main in cut-de-ears



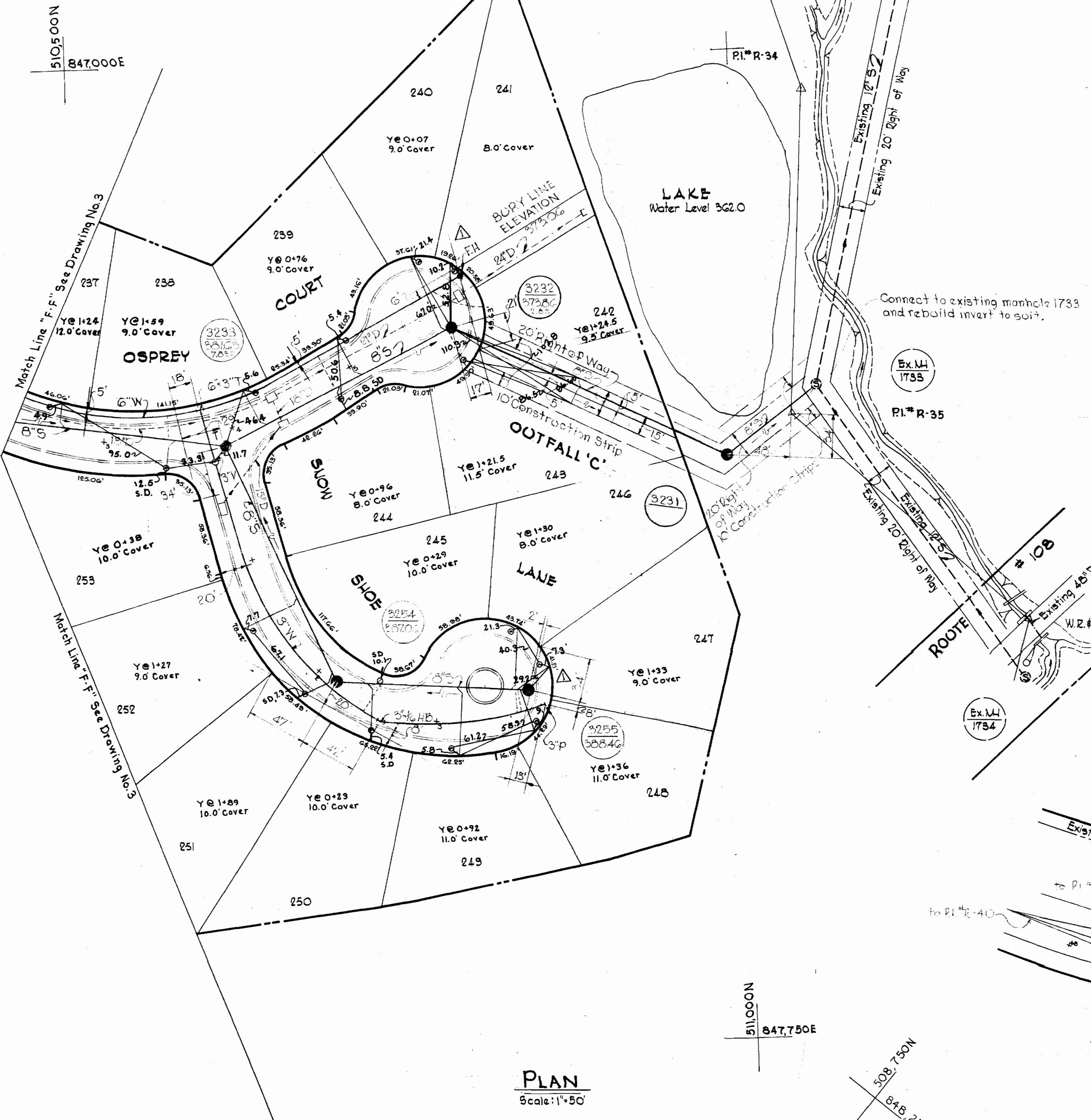
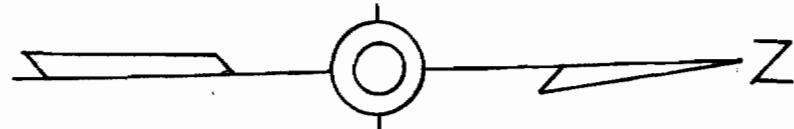
259-W5/5



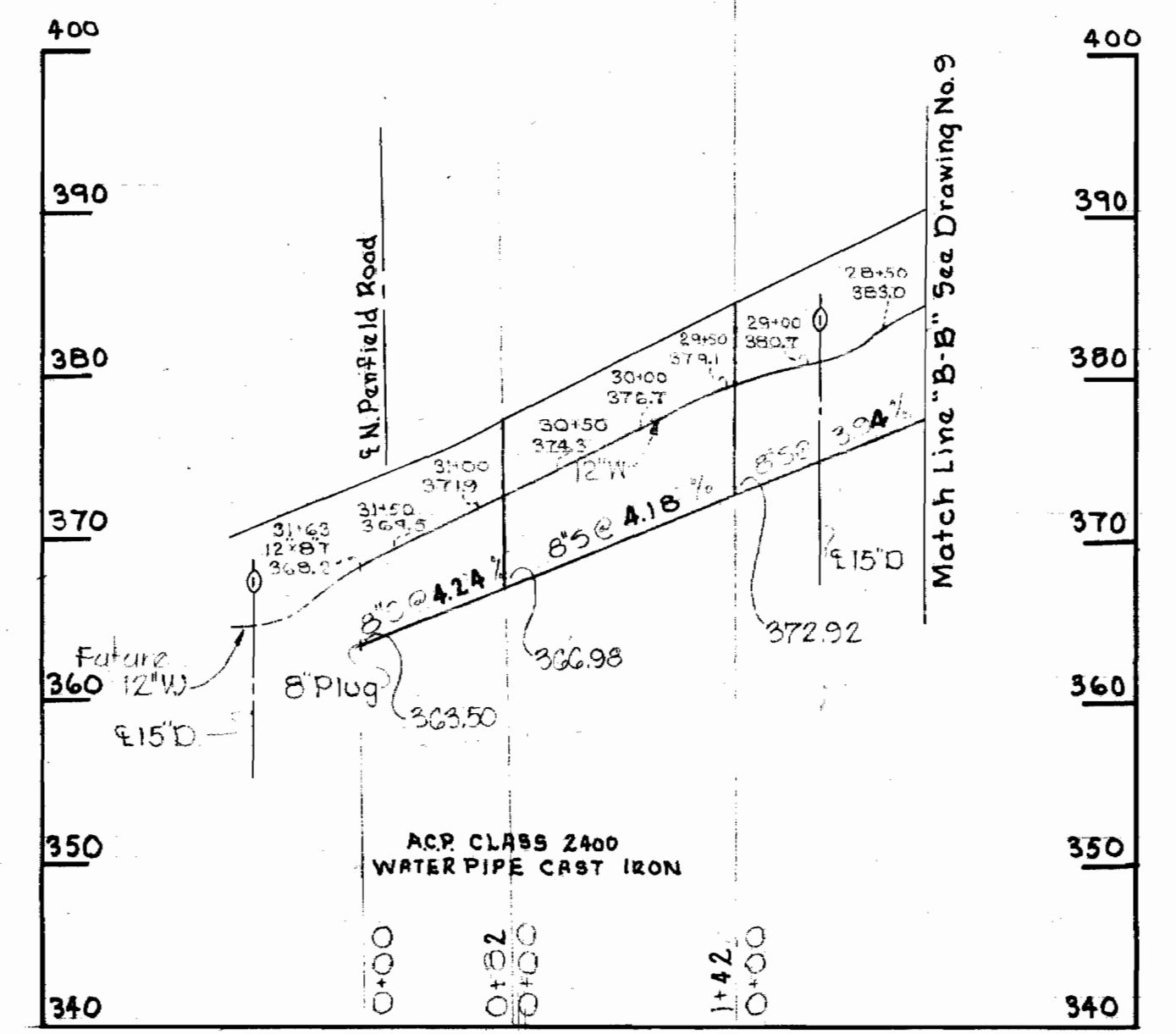
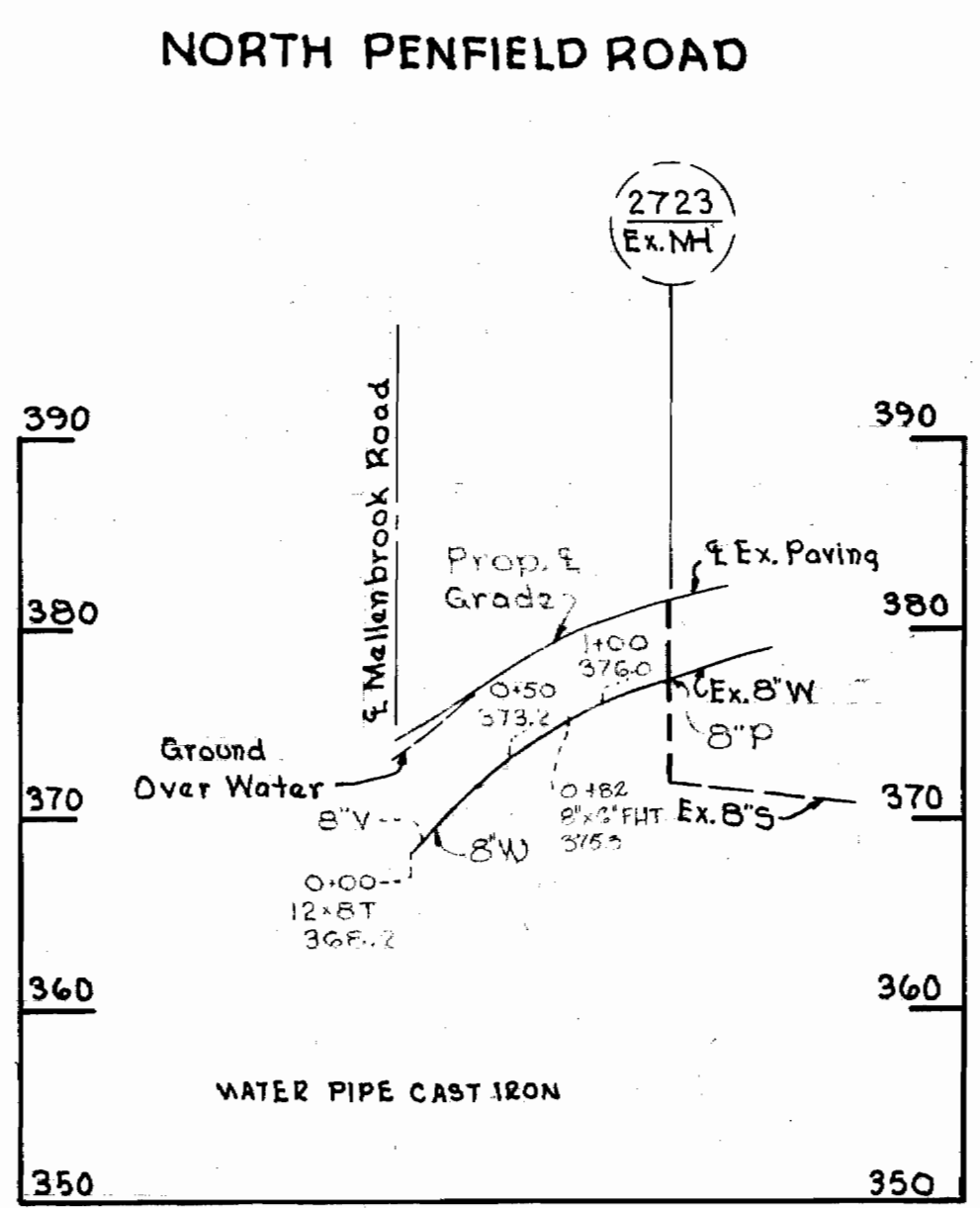
*Kenneth A. McLeod*  
Thunder Hill  
Contract No. C-259-W5

<b>WHITMAN, REQUARDT &amp; ASSOCIATES</b> ENGINEERS 1304 ST. PAUL ST. BALTIMORE, MARYLAND	<b>HOWARD COUNTY METROPOLITAN COMMISSION</b> DATE: 8-5-68 CHIEF ENGINEER: W. O. Pullart	<b>CONTRACT NO. C-259-W5</b>	<b>PLAN OF WATER &amp; SEWER MAINS</b>	<b>COLUMBIA VILLAGE OF OAKLAND MILLS ELECTION DISTRICT GUILFORD NO. 6</b>	<b>DRAWING NO. 5 OF 12</b>	<b>SCALE 1" = 50'</b>
--	---	------------------------------	--	---	----------------------------	-----------------------



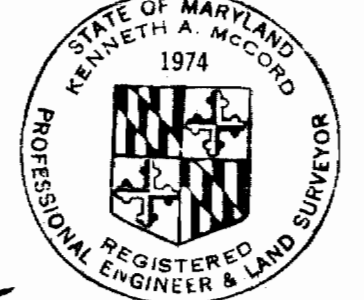
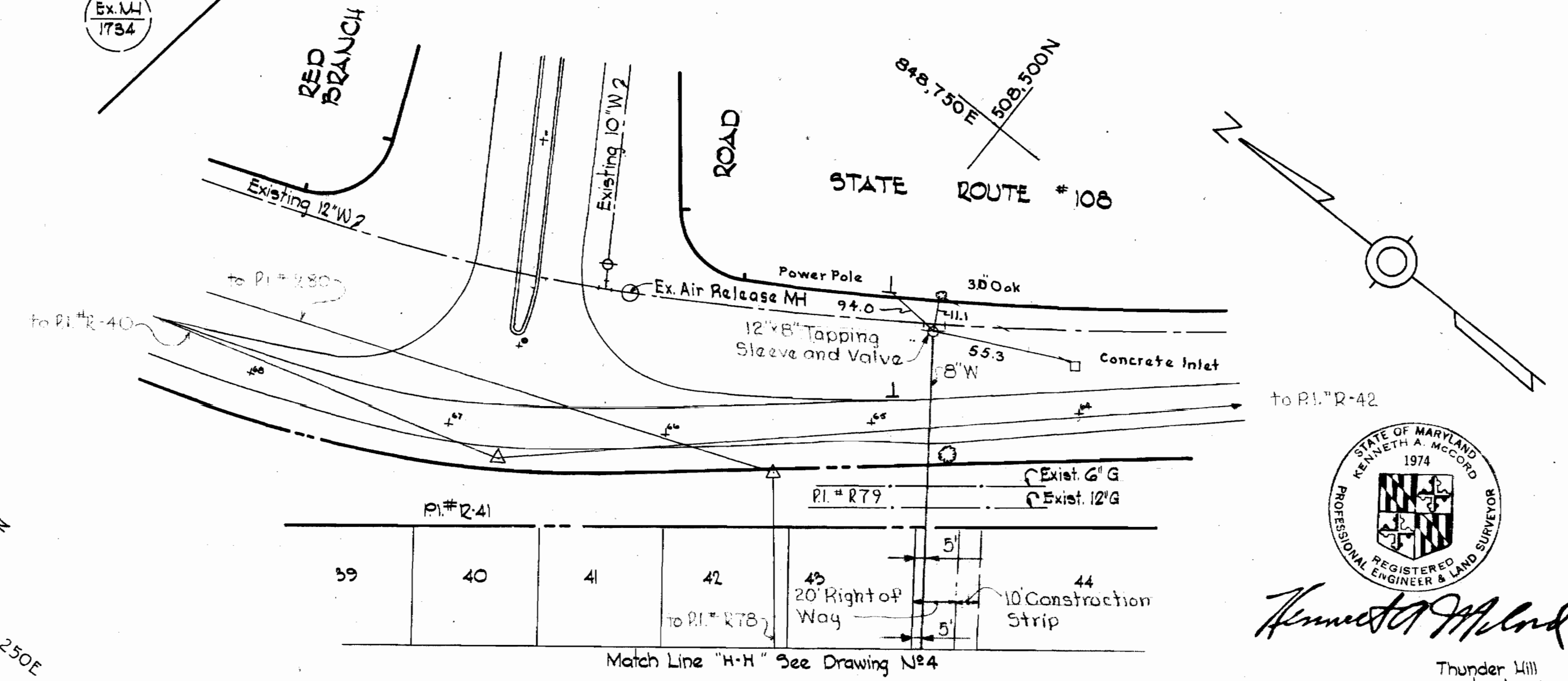


**PLAN**  
Scale: 1"=50'



**PROFILE**  
Hor: 1"=100'  
Vert: 1"=10'

No.	Date	Revision
1	3-13-68	Revised water main in cul-de-sacs



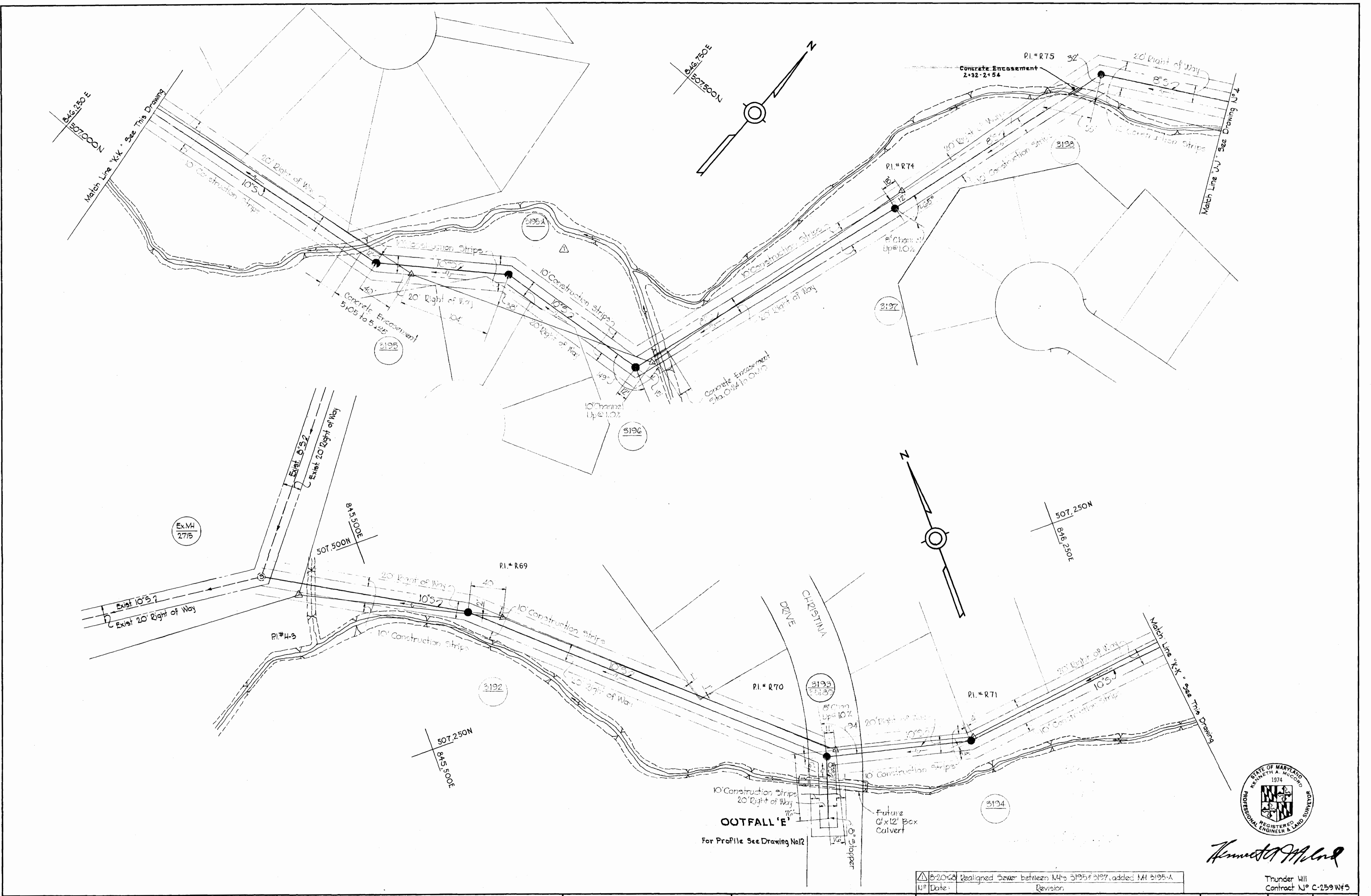
*Kenneth A. McLeod*

Thunder Hill  
Contract N<sup>o</sup> C-259-W#5

WHITMAN, REQUARDT & ASSOCIATES ENGINEERS 1304 ST. PAUL ST. BALTIMORE, MARYLAND	HOWARD COUNTY METROPOLITAN COMMISSION 8-5-68 <i>Edward O. Falbert</i> CHIEF ENGINEER	CONTRACT NO. C-259-W#5	PLAN & PROFILES OF WATER & SEWER MAINS	COLUMBIA VILLAGE OF OAKLAND MILLS ELECTION DISTRICT GUILFORD NO. 6	DRAWING NO. 6 OF 12	SCALE AS SHOWN
					DATE	CHIEF ENGINEER

259-WS/6

15 259-WS17



*Kenneth A. McCord*  
 Thunder Hill  
 Contract No. C-259-W#3

△ B-2068 Realigned Sewer between Mts 3195 & 3197, added Mt 3195-A  
 11/2 Date: Revision:

WHITMAN, REQUARDT & ASSOCIATES  
 ENGINEERS  
 1304 ST. PAUL ST.  
 BALTIMORE, MARYLAND

HOWARD COUNTY METROPOLITAN COMMISSION  
 8-5-68 *W. O. Palmer*  
 DATE CHIEF ENGINEER

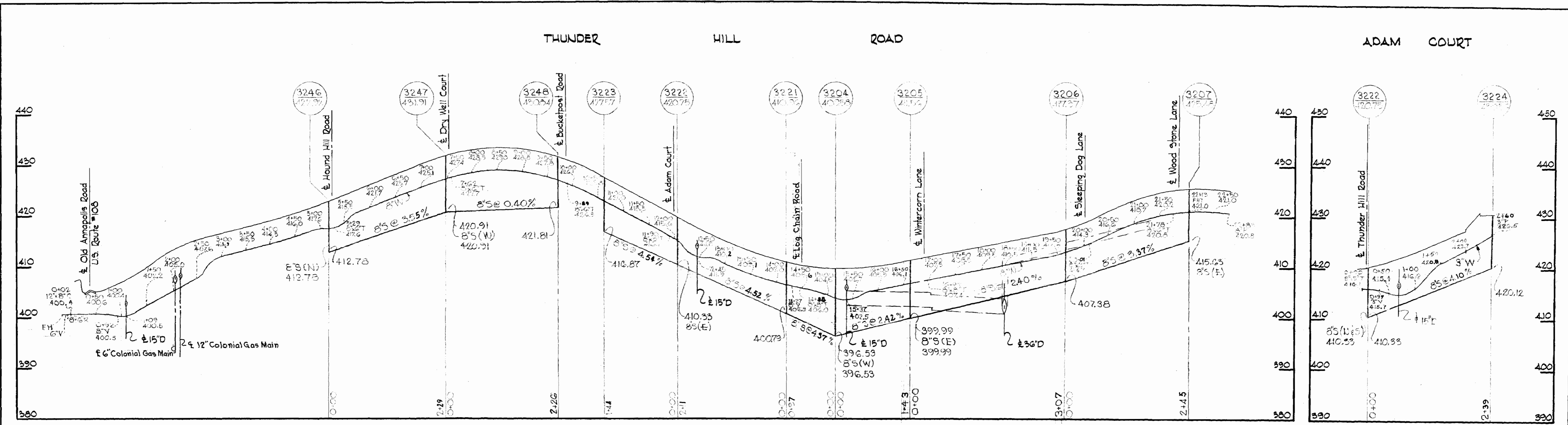
CONTRACT NO. C-259-W#3

PLAN OF  
 SEWER MAINS

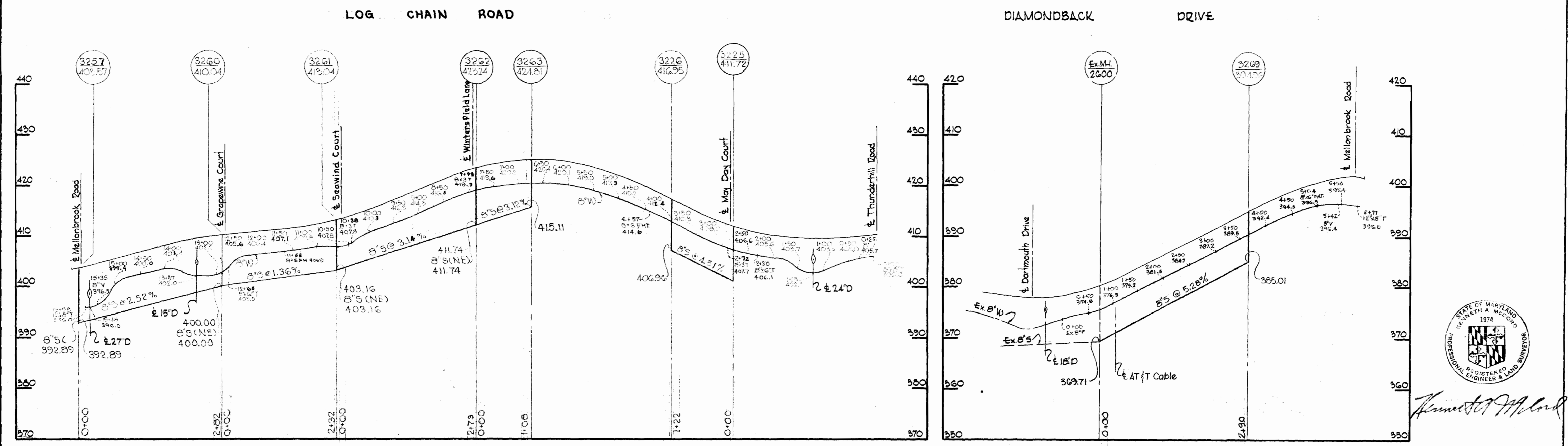
COLUMBIA  
 VILLAGE OF OAKLAND MILLS  
 ELECTION DISTRICT GUILFORD NO. 6

DRAWING NO. 7 OF 12  
 SCALE 1" = 50'





ALL SEWER PIPE - A.C.P. CLASS 2400  
 ALL WATER PIPE - CAST IRON



*Kenneth A. McCord*

Thunder Hill  
 Contract N/C-259-W/5

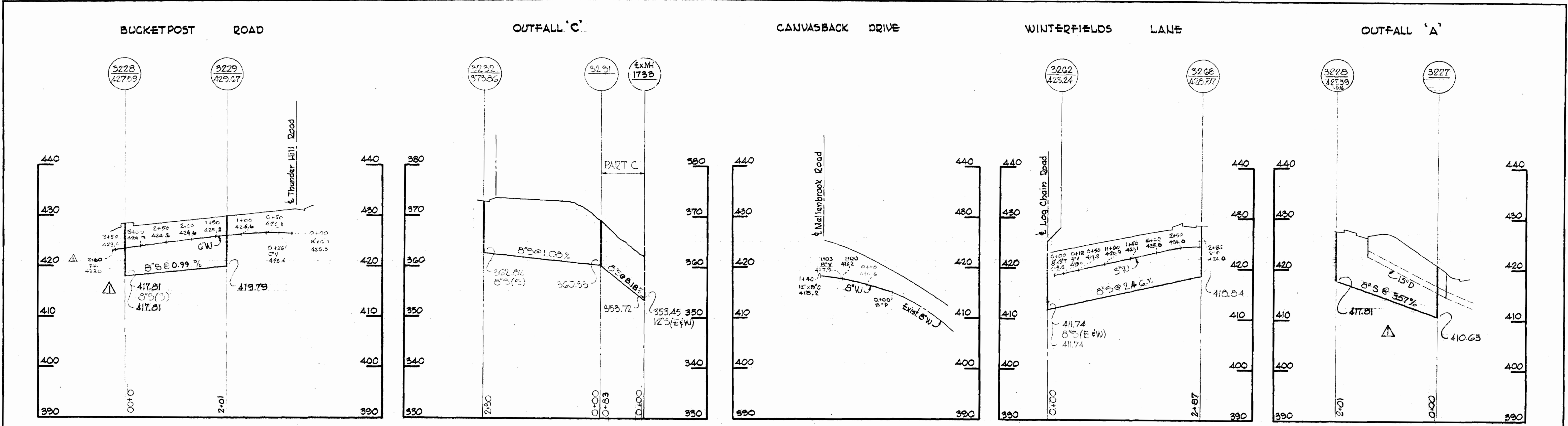
WHITMAN, REQUARDT & ASSOCIATES ENGINEERS 1304 ST. PAUL ST. BALTIMORE, MARYLAND	HOWARD COUNTY METROPOLITAN COMMISSION 8-5-68 <i>w o Falah</i> DATE CHIEF ENGINEER	CONTRACT NO. C-259-W/5	PROFILES OF WATER & SEWER MAINS	COLUMBIA VILLAGE OF OAKLAND MILLS ELECTION DISTRICT GUILFORD NO. 6	DRAWING NO. 8 OF 12 SCALE HI"=100' V.I"=10'
---	---	------------------------	------------------------------------	--	--



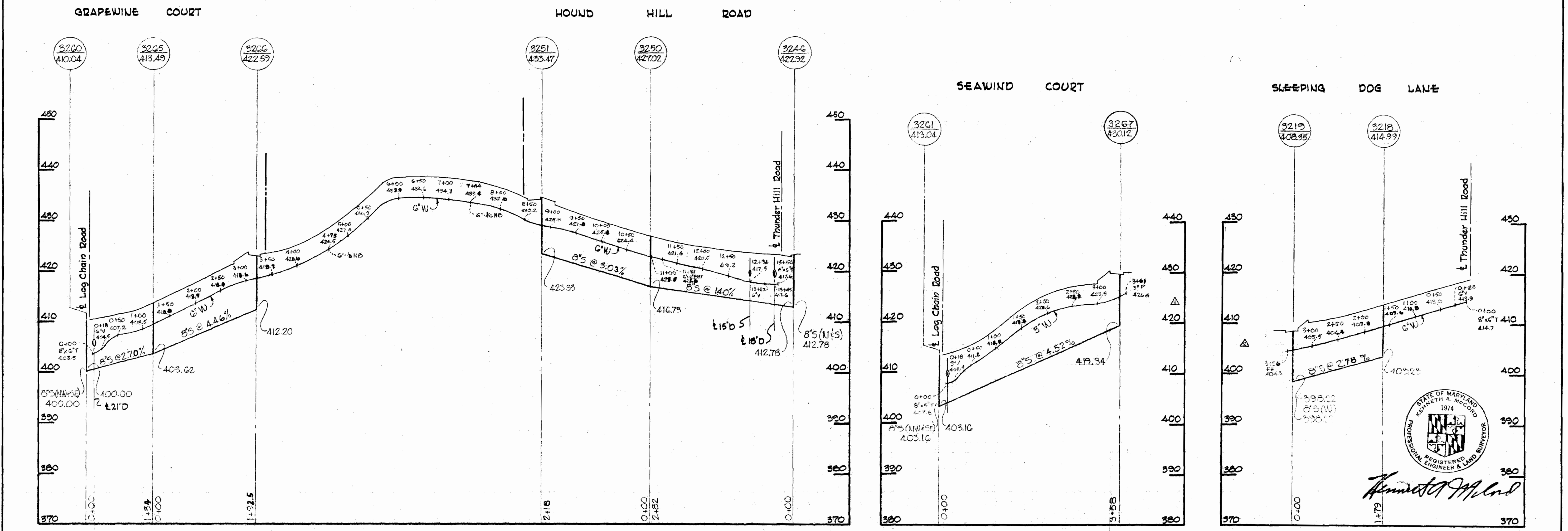




VS 259-WS/10

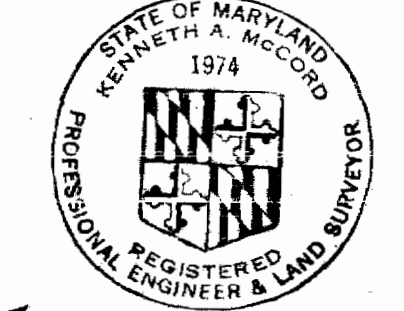


ALL SEWER PIPE - ACP CLASS 2410  
ALL WATER PIPE - CAST IRON



▲	9-15-68	Revised Water in Cul-de-Sacs
▲	8-26-68	Revised Sewer Between MH's 3228, 3227 & 3225
No.	Date	Revision

<b>WHITMAN, REQUARDT &amp; ASSOCIATES</b> ENGINEERS 1304 ST. PAUL ST. BALTIMORE, MARYLAND	<b>HOWARD COUNTY METROPOLITAN COMMISSION</b> 8-5-68 <i>W. O. ...</i> DATE CHIEF ENGINEER	<b>CONTRACT NO. C-259-W8S</b>	<b>PROFILES OF WATER &amp; SEWER MAINS</b>	<b>COLUMBIA VILLAGE OF OAKLAND MILLS ELECTION DISTRICT GUILFORD NO. 6</b>	<b>DRAWING NO. 10 OF 12</b>	<b>SCALE H-1"=100' V-1"=10'</b>
					Thunder Hill Contract C-259-W8S	



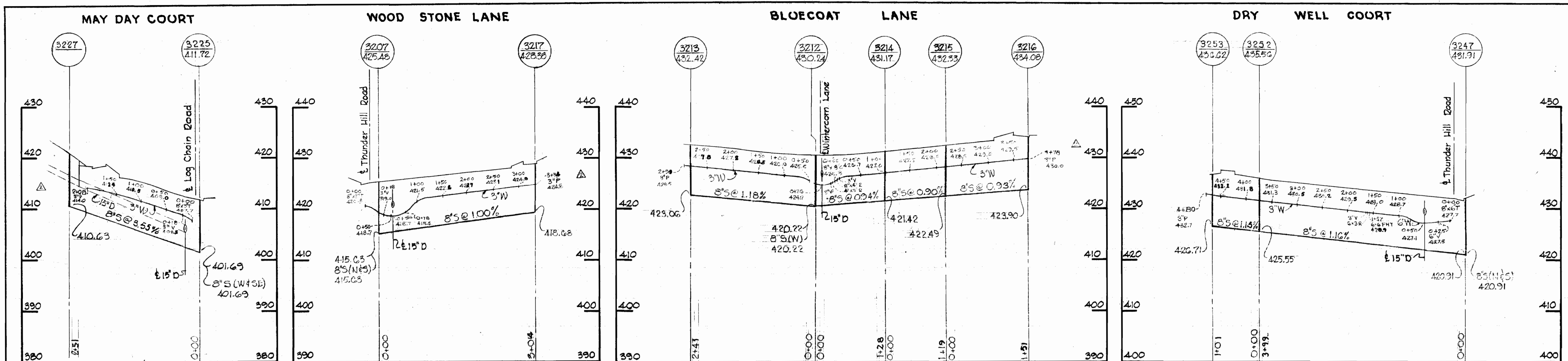
*Kenneth A. McLeod*



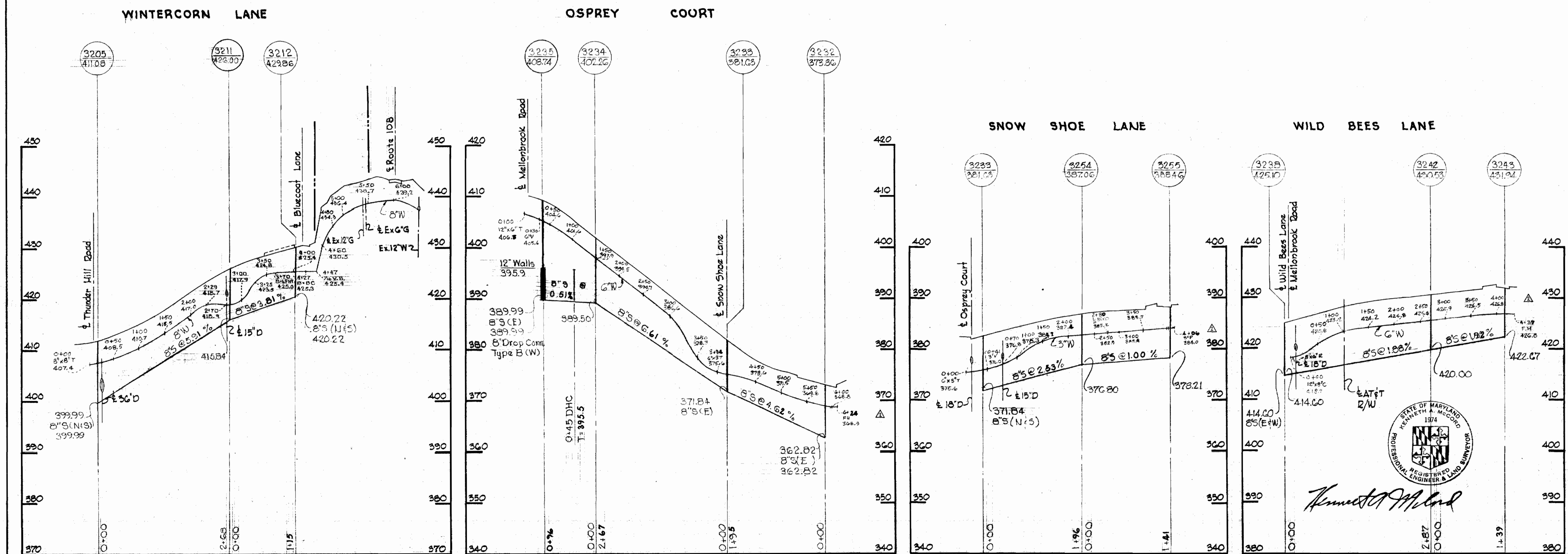
SUSPENSE

SUSPENSE

SUSPENSE



ALL SEWER PIPE - ACP CLASS 2400  
 ALL WATER PIPE - CAST IRON



9-13-68	Revised Water in Cul-de-Sacs
8-26-68	Revised Sewer Between LH's #3225, 3227, 3225
No. Date	Revision

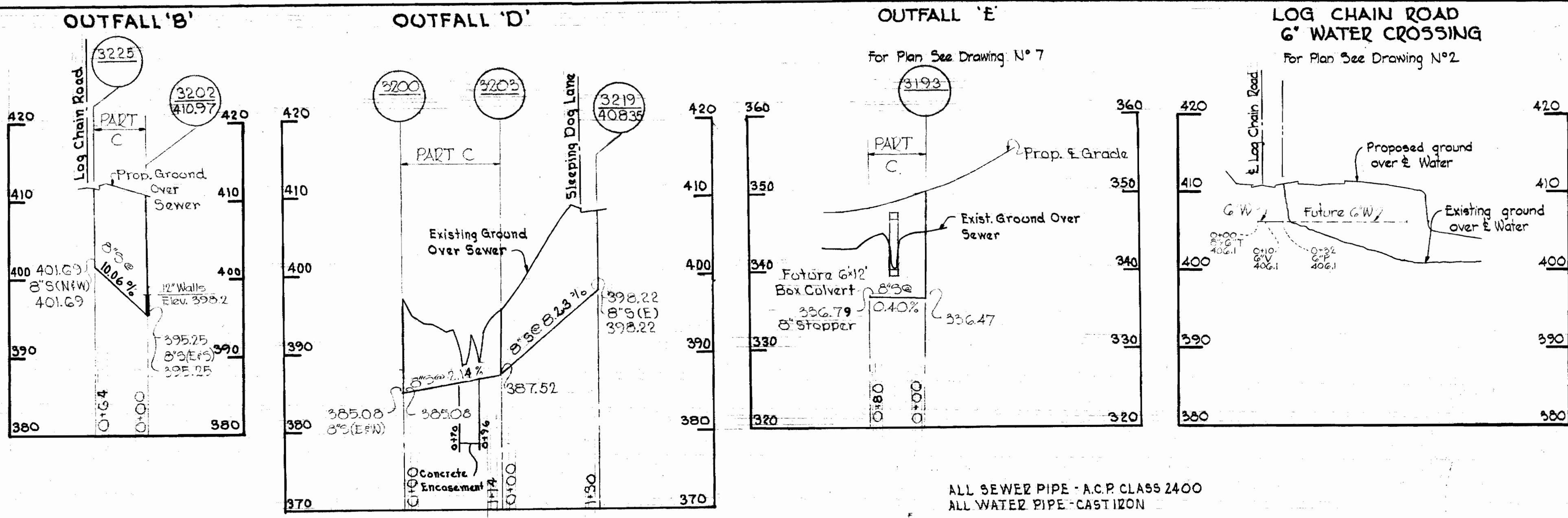


*Kenneth A. McCord*

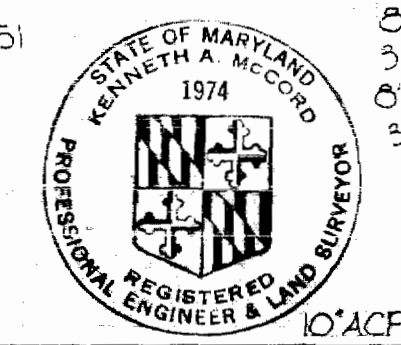
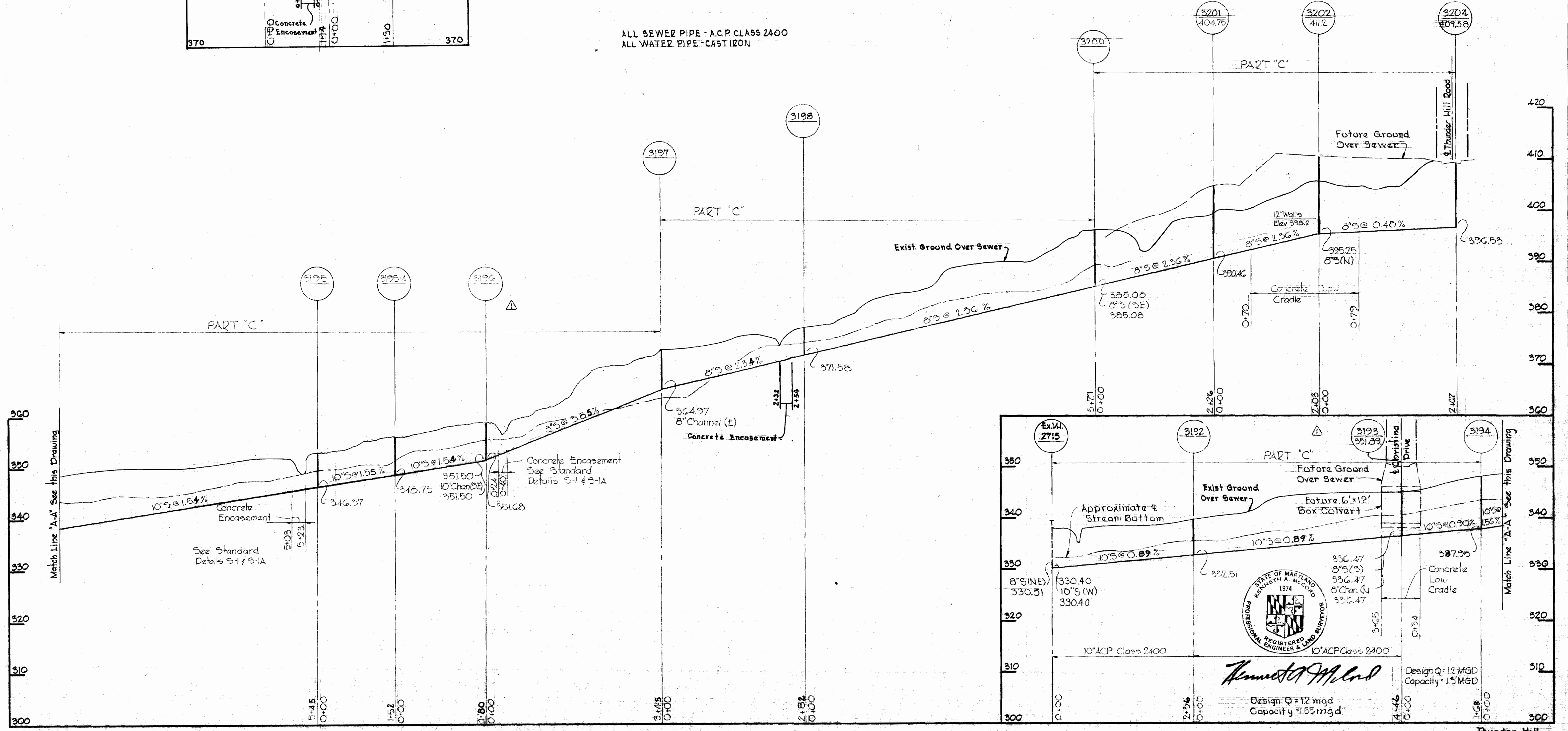
<b>WHITMAN, REQUARDT &amp; ASSOCIATES</b> ENGINEERS 1304 ST. PAUL ST. BALTIMORE, MARYLAND	<b>HOWARD COUNTY METROPOLITAN COMMISSION</b> DATE: 8-5-68 CHIEF ENGINEER: <i>[Signature]</i>	CONTRACT NO. C-259-WBS	PROFILES OF WATER & SEWER MAINS	COLUMBIA VILLAGE OF OAKLAND MILLS ELECTION DISTRICT GUILFORD NO. 6	DRAWING NO. 11 OF 12	SCALE H <sup>1</sup> = 100' V <sup>1</sup> = 10'
--	--	------------------------	------------------------------------	--	----------------------------	--



N <sup>o</sup> Date:	Revision
△ 259-WS	Revised Sewer profile between M's 2715 & 3194, and M's 3195 & 3197, and added M 3195-A



ALL SEWER PIPE - A.C.P. CLASS 2400  
ALL WATER PIPE - CAST IRON



*Kenneth A. McLeod*  
Design Q = 12 MGD  
Capacity = 15 MGD

WHITMAN, REQUARDT & ASSOCIATES  
ENGINEERS  
1304 ST. PAUL ST.  
BALTIMORE, MARYLAND

HOWARD COUNTY METROPOLITAN COMMISSION  
DATE 8-5-68  
w.o. Palmer ENGINEER

CONTRACT NO. C-259-W8S

PROFILES OF  
WATER & SEWER MAINS

COLUMBIA  
VILLAGE OF OAKLAND MILLS  
ELECTION DISTRICT GUILFORD NO. 6

THUNDER HILL  
CONTRACT C-259-W8S  
DRAWING NO. 12 OF 12  
SCALE H1" = 100' V1" = 10'

259-WS/12

SUSPENSE

SUSPENSE