

VICINITY MAP

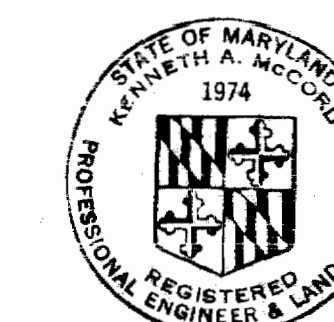
Scale: 1"=2500'

GENERAL NOTES

1. Approximate location of existing mains are shown. The Contractor shall take all necessary precautions to protect existing mains and services and maintain uninterrupted supply. Any damage incurred shall be repaired immediately.
2. All pipe elevations shown are invert elevations.
3. The Contractor shall locate existing utilities a minimum of two weeks in advance of construction operations in vicinity of utilities.
4. For all standard details see standards bound in Specifications.
5. All water mains to be C.I.P. or D.I.P. and have a minimum of 36" cover.
6. Block all fittings with concrete, see standard details bound in Specifications.
7. Buryline elevations on fire hydrants shall be set to elevations shown on drawings.
8. All Fire Hydrants shall be strapped to the tee and shall be buttressed with concrete in accordance with Standard Details.
9. Clear all utilities by a minimum of 6', clear all poles by 2'-0" minimum or tunnel as required.
10. The Contractor shall provide a joint in all sewer mains within 2'-0" of exterior manhole walls.
11. All sewer pipe shall be VCPX, CSPX, or ACP Class 2400.
12. 12" Manhole walls shown on profiles pertain to brick manholes only.
13. All Force Main pipe shall be C.I.P. or D.I.P. and have a minimum of 36" cover.

MATERIALS TO BE FURNISHED BY THE COMMISSION

ITEM	QUANTITY
F.H.	10
3"V	6
6"V	9
8"V	4

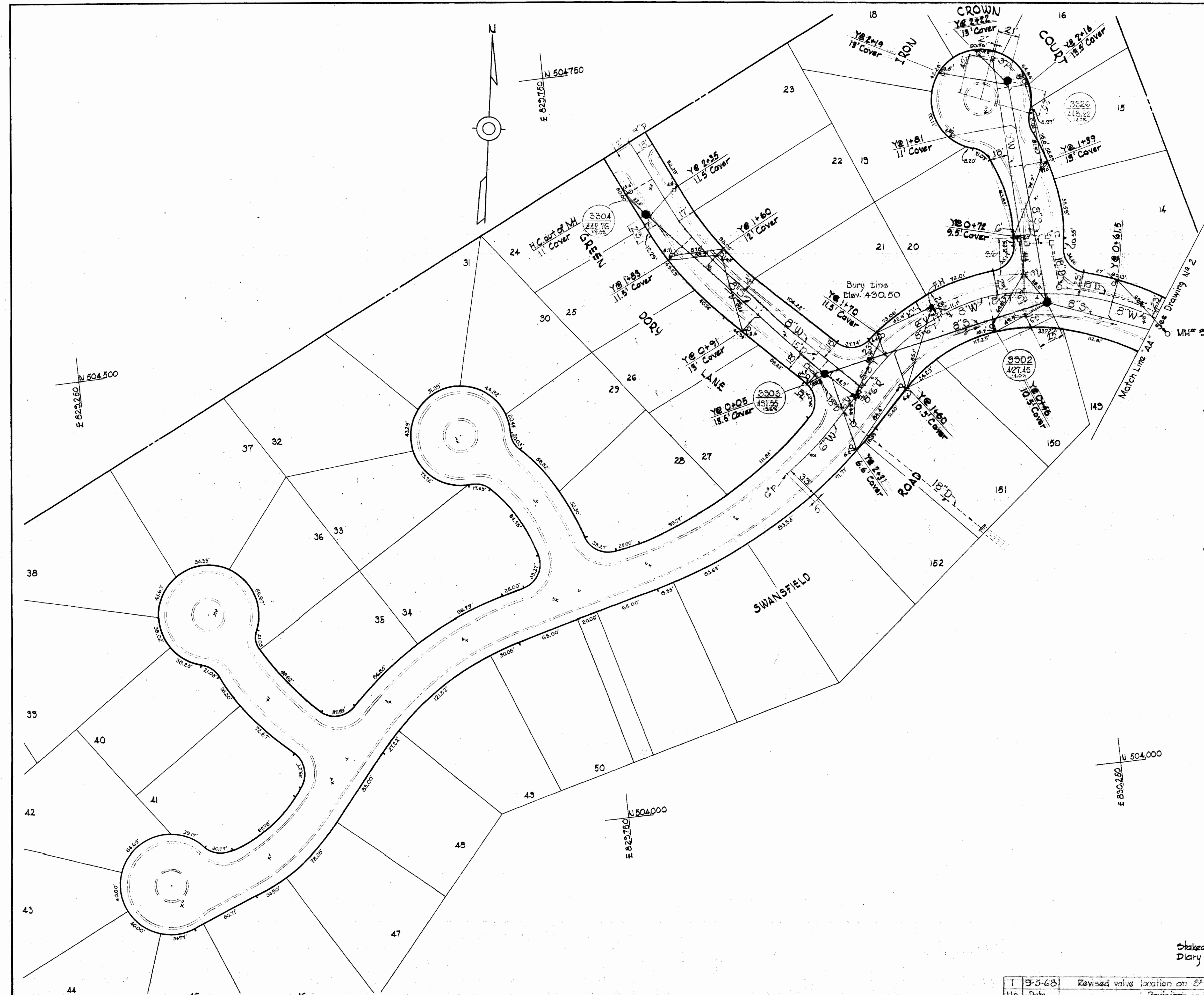


*Kenneth A. McCard*

Stakeout in Field Book #425B  
Diary in Field Book #425C

Swansfield  
Contract No. C-258 W&S

No.	Date	Revision
1	9-3-68	Revised valve location on 8" Water Main



258-WS/1

WHITMAN, REQUARDT & ASSOCIATES  
ENGINEERS  
1304 ST. PAUL ST.  
BALTIMORE, MARYLAND

HOWARD COUNTY METROPOLITAN COMMISSION  
8-3-68 *no file*  
DATE CHIEF ENGINEER

CONTRACT NO. C-258-W&S

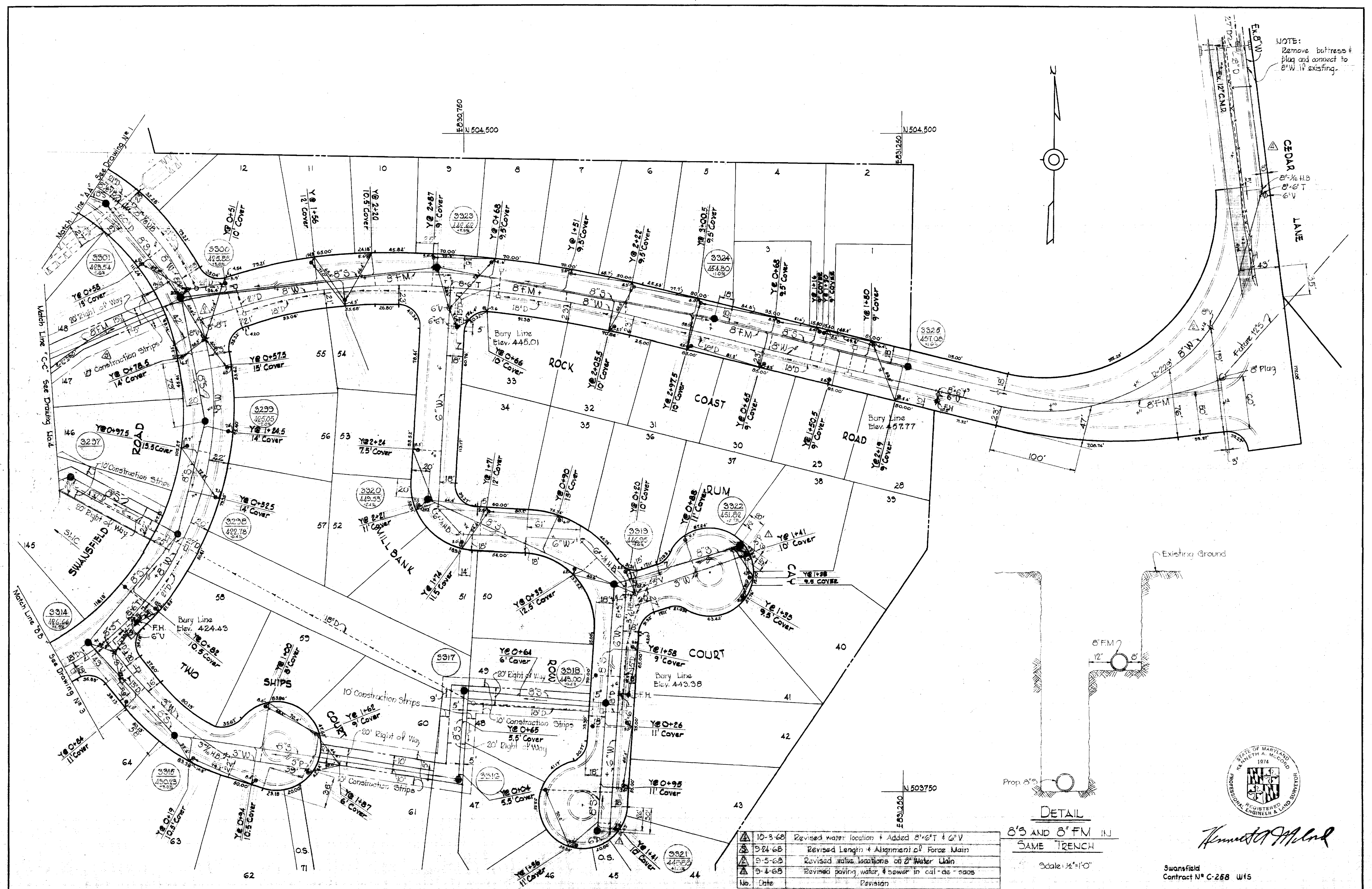
PLAN OF  
WATER AND SEWER MAINS

COLUMBIA  
VILLAGE OF HARPER'S CHOICE  
ELECTION DISTRICT CLARKVILLE NO. 5

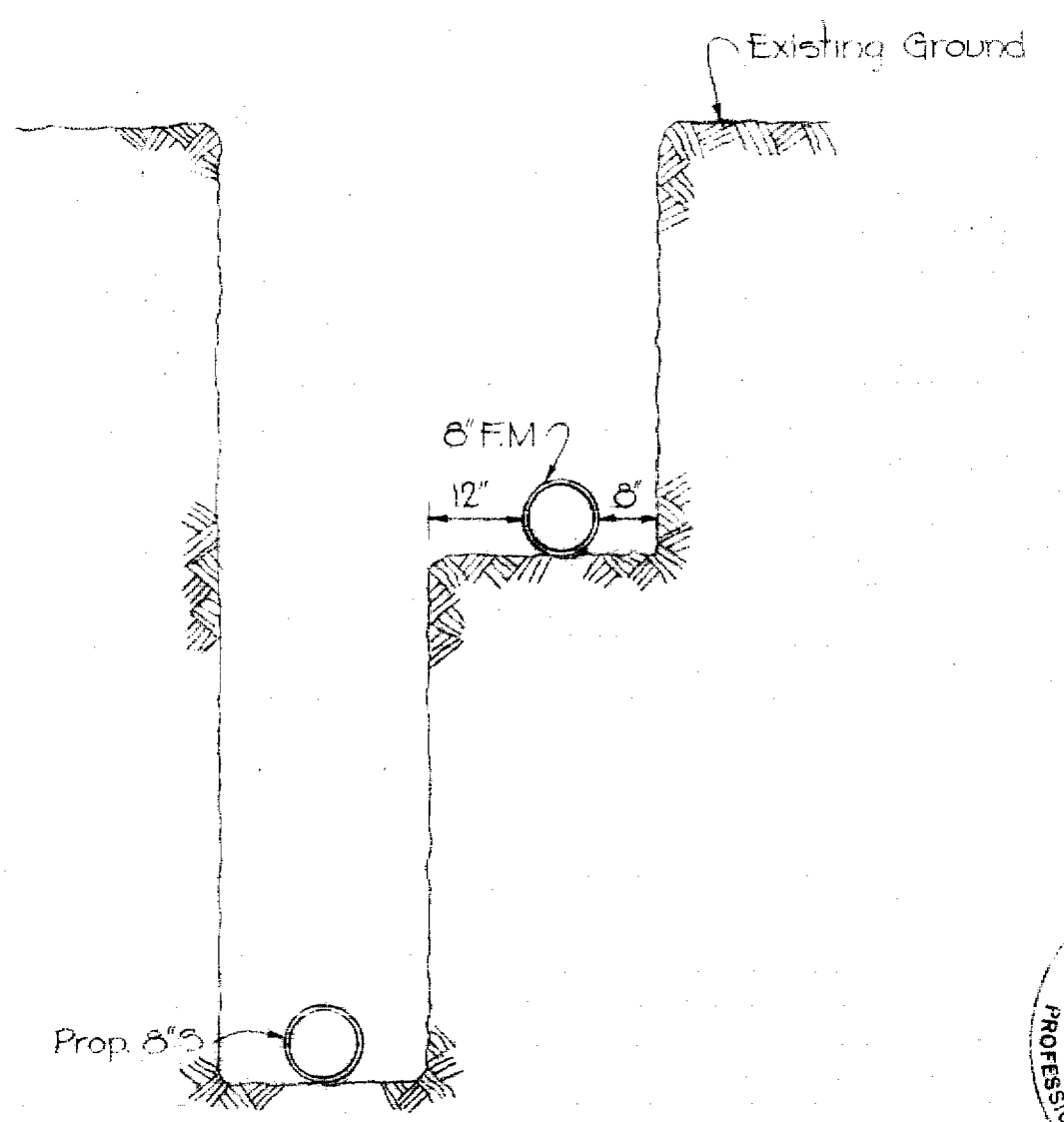
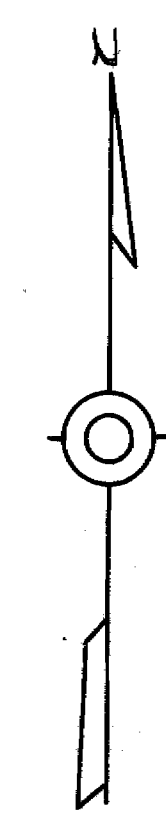
DRAWING NO. 1 OF 7 SCALE AS SHOWN



WS 258-WS/1

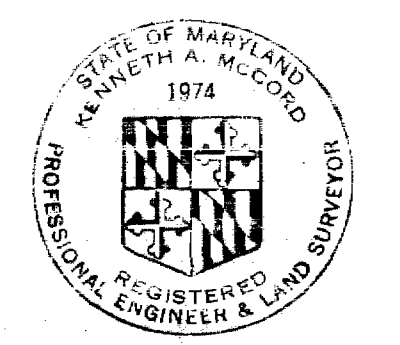


NOTE:  
Remove buttress & plug and connect to 8" W if existing.



DETAIL  
8" S AND 8" FM IN  
SAME TRENCH  
Scale: 1/2" = 1'-0"

10-3-68	Revised water location + Added 8" WT + 6" V
9-24-68	Revised Length + Alignment of Force Main
9-5-68	Revised static locations of 8" Water Main
9-1-68	Revised paving water, & sewer in call-de-rags
No. Date	Revision



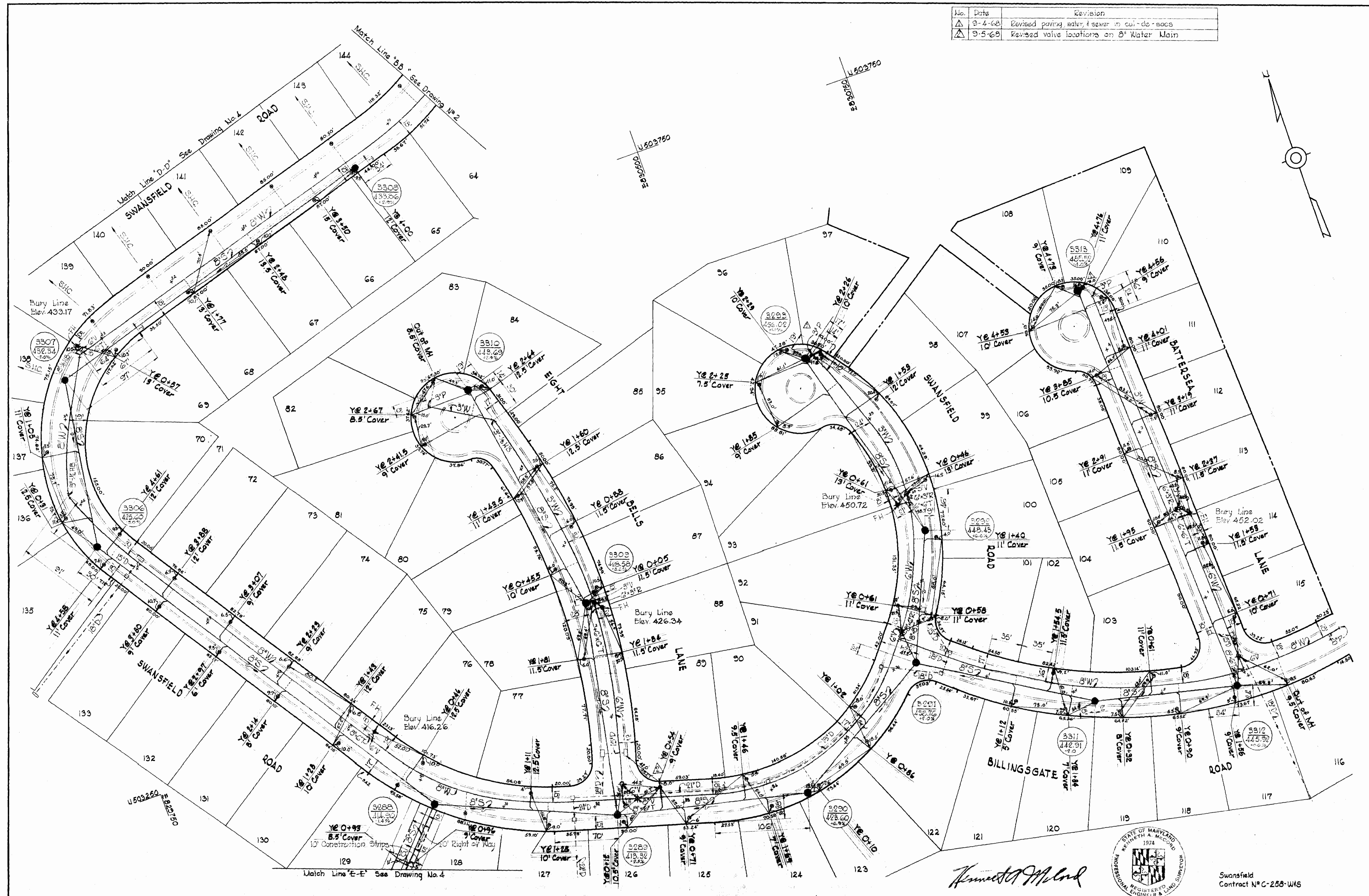
*Kenneth A. McLeod*

Swansfield  
Contract No. C-258 WS

WHITMAN, REQUARDT & ASSOCIATES ENGINEERS 1304 ST. PAUL ST. BALTIMORE, MARYLAND	HOWARD COUNTY METROPOLITAN COMMISSION 8-8-68 DATE	CONTRACT NO. C-258-WS W. O. P. [Signature] CHIEF ENGINEER	PLAN OF WATER & SEWER MAINS	COLUMBIA VILLAGE OF HARPER'S CHOICE ELECTION DISTRICT CLARKVILLE NO. 5	DRAWING NO. 2 OF 7 SCALE 1" = 50' AS BUILT - April 1, 1969 JAN. 1971
---	---	---	--------------------------------	--	--



No.	Date	Revision
△	8-4-68	Revised paving water & sewer in cut-de-sacs
△	9-5-68	Revised valve locations on 8" Water Main



*James M. Lord*



Swansfield  
Contract No. C-258-WBS

WHITMAN, REQUARDT & ASSOCIATES  
ENGINEERS  
1304 ST. PAUL ST.  
BALTIMORE, MARYLAND

HOWARD COUNTY METROPOLITAN COMMISSION  
8-8-68 *W O Pillard*  
DATE CHIEF ENGINEER

CONTRACT NO. C-258-WBS

PLAN OF  
WATER & SEWER MAINS

COLUMBIA  
VILLAGE OF HARPER'S CHOICE  
ELECTION DISTRICT CLARKVILLE NO. 5.

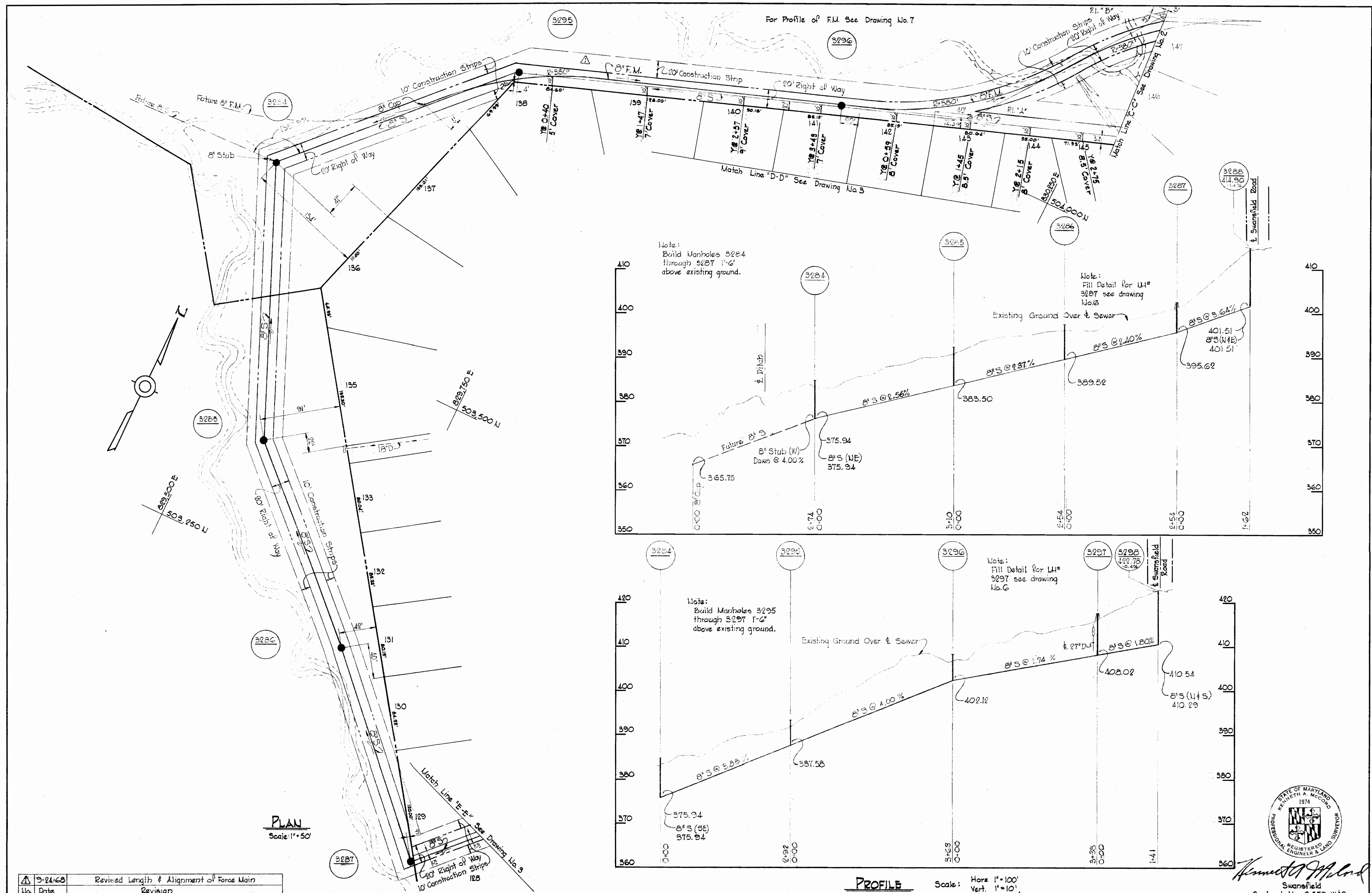
DRAWING  
NO. 3  
OF 7  
SCALE  
1" = 50'

C/S-M-807



258-WS/4

WS



No.	Date	Revision
1	9-24-68	Revised Length & Alignment of Force Main

**WHITMAN, REQUARDT & ASSOCIATES**  
 ENGINEERS  
 1304 ST. PAUL ST.  
 BALTIMORE, MARYLAND

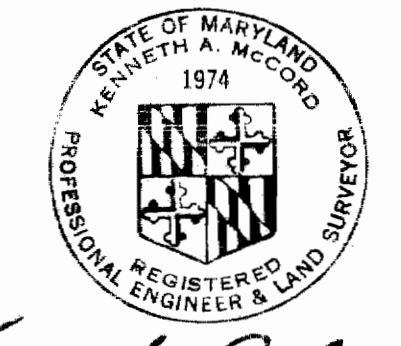
**HOWARD COUNTY METROPOLITAN COMMISSION**  
 8-8-68 *W O Gilbert*  
 DATE CHIEF ENGINEER

**CONTRACT NO. C-258-W8S**

**PLAN & PROFILES**  
**WATER & SEWER MAINS**

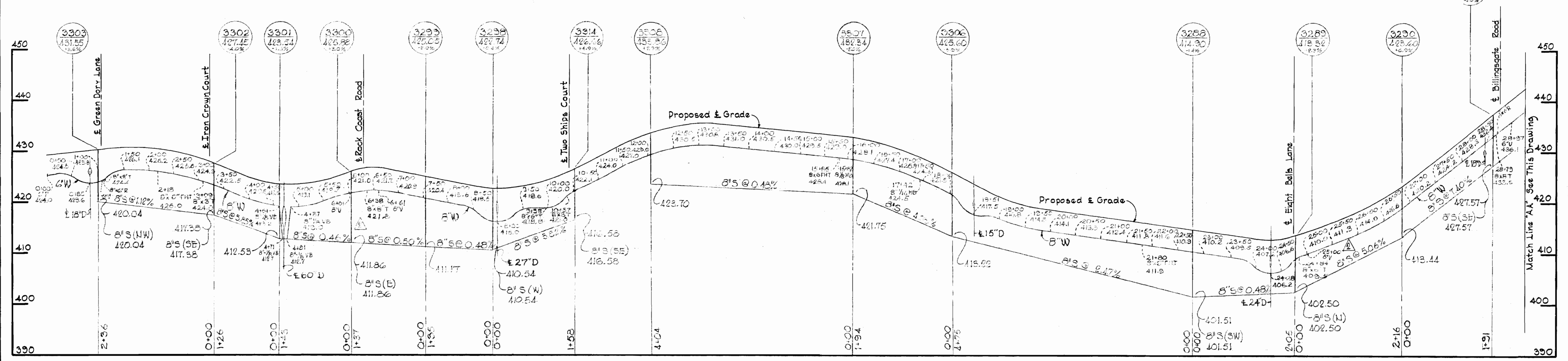
**COLUMBIA**  
**VILLAGE OF HARPER'S CHOICE**  
**ELECTION DISTRICT CLARKVILLE NO. 5**

**DRAWING NO. 4 OF 7**  
**SCALE 1" = 50'**  
 503,475  
 504,475

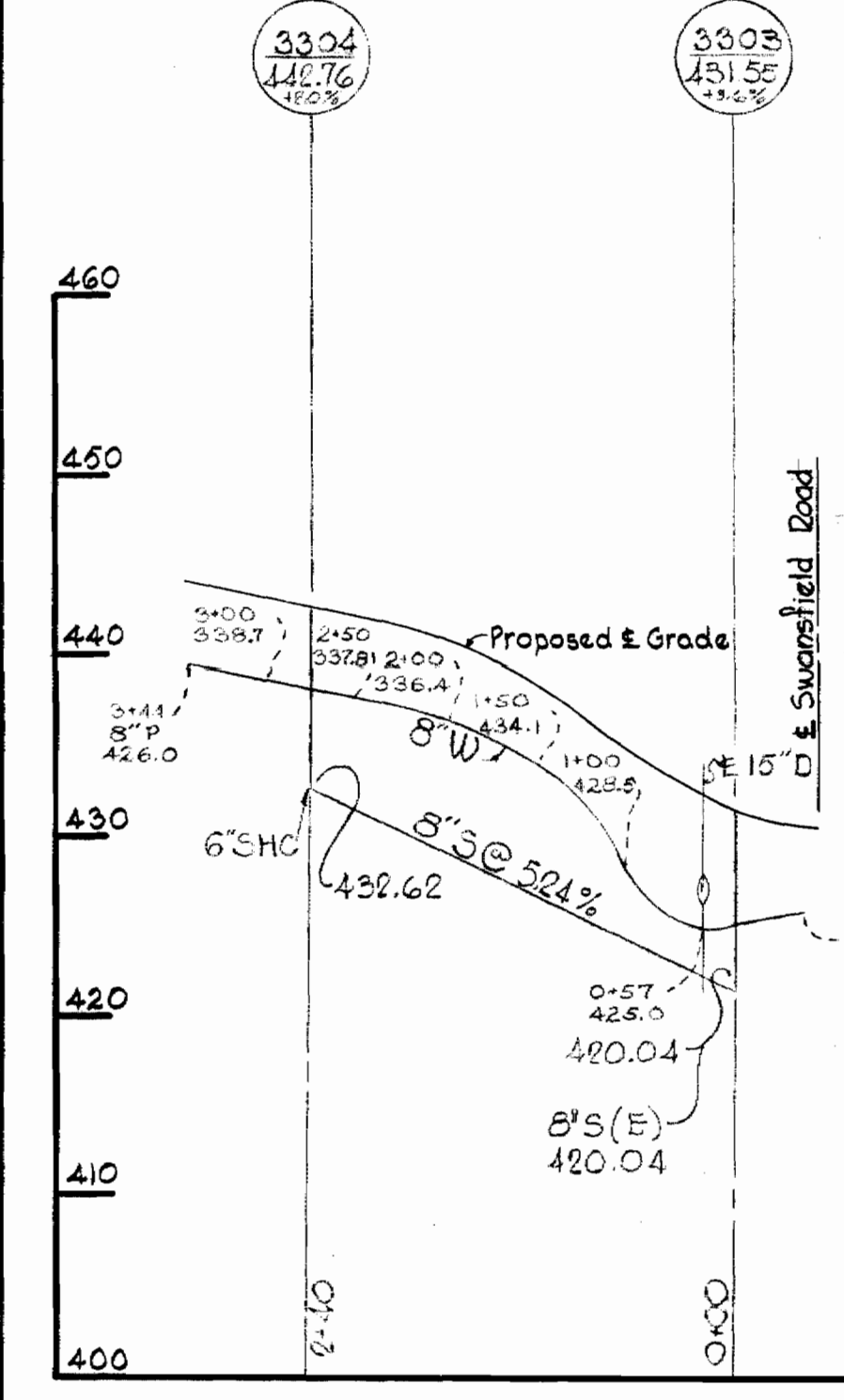


*Kenneth A. McCord*  
 Swansfield  
 Contract No. C-258 W8S

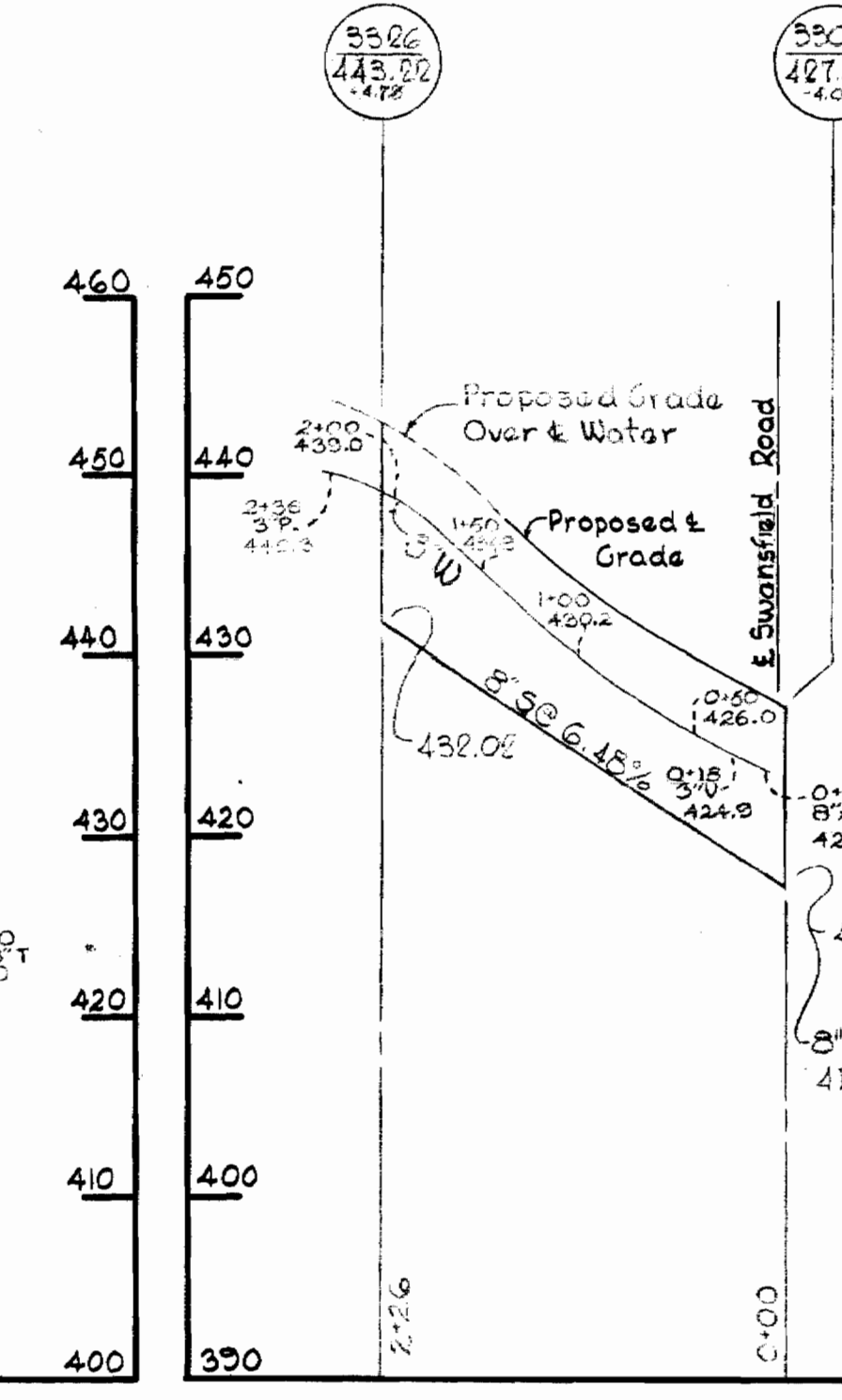
SWANSFIELD ROAD



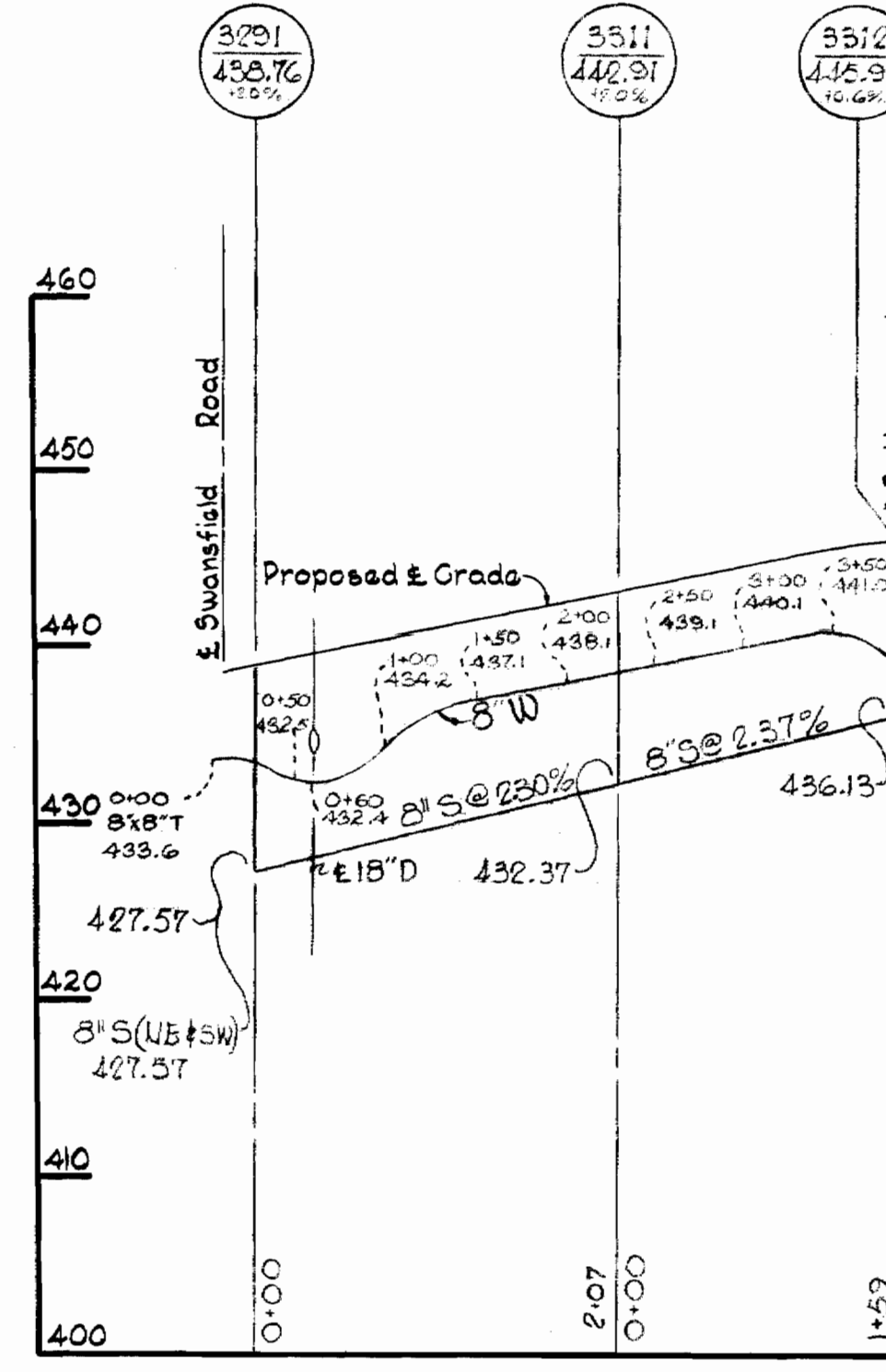
GREEN DORY LANE



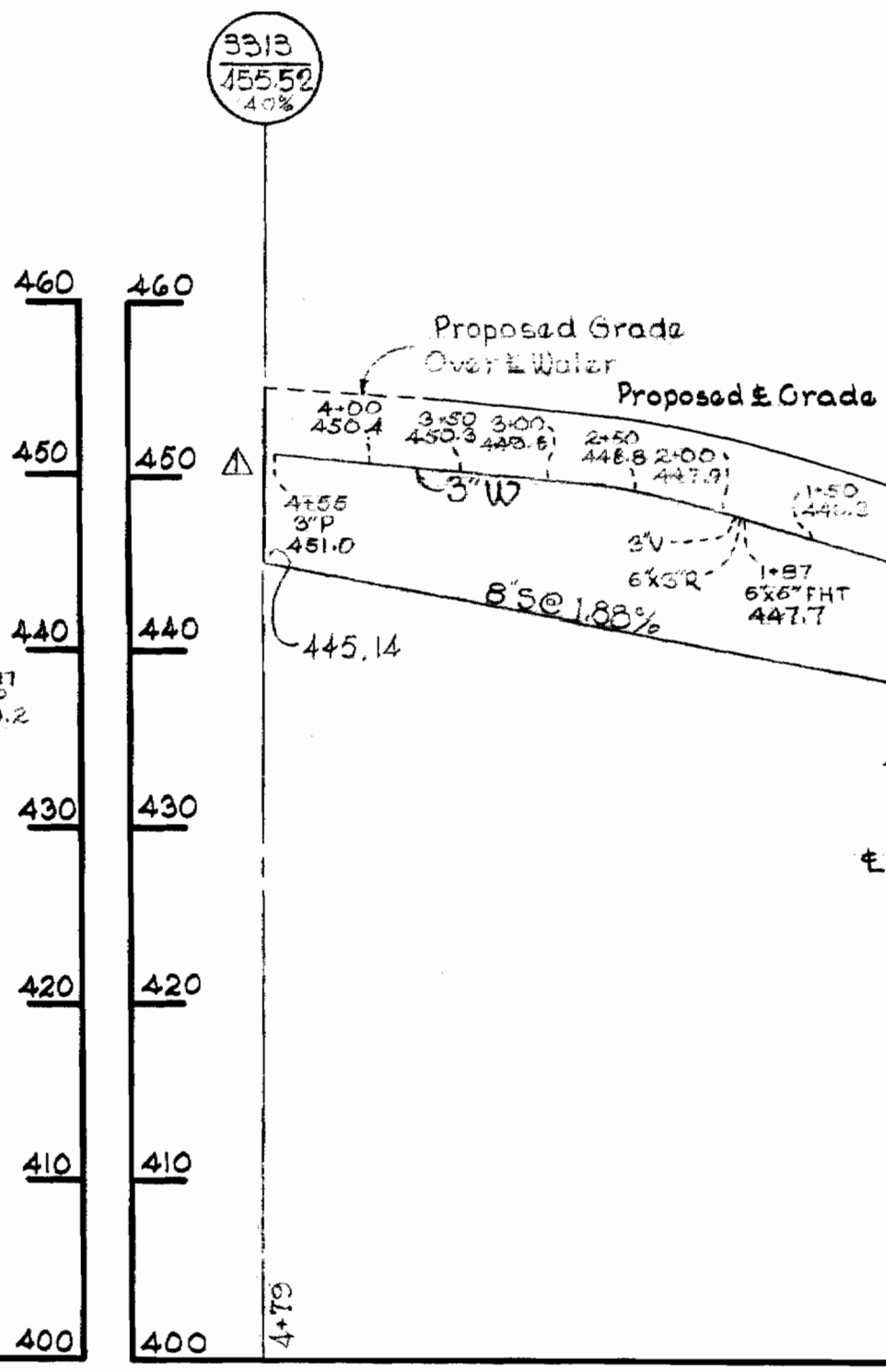
IRON CROWN COURT



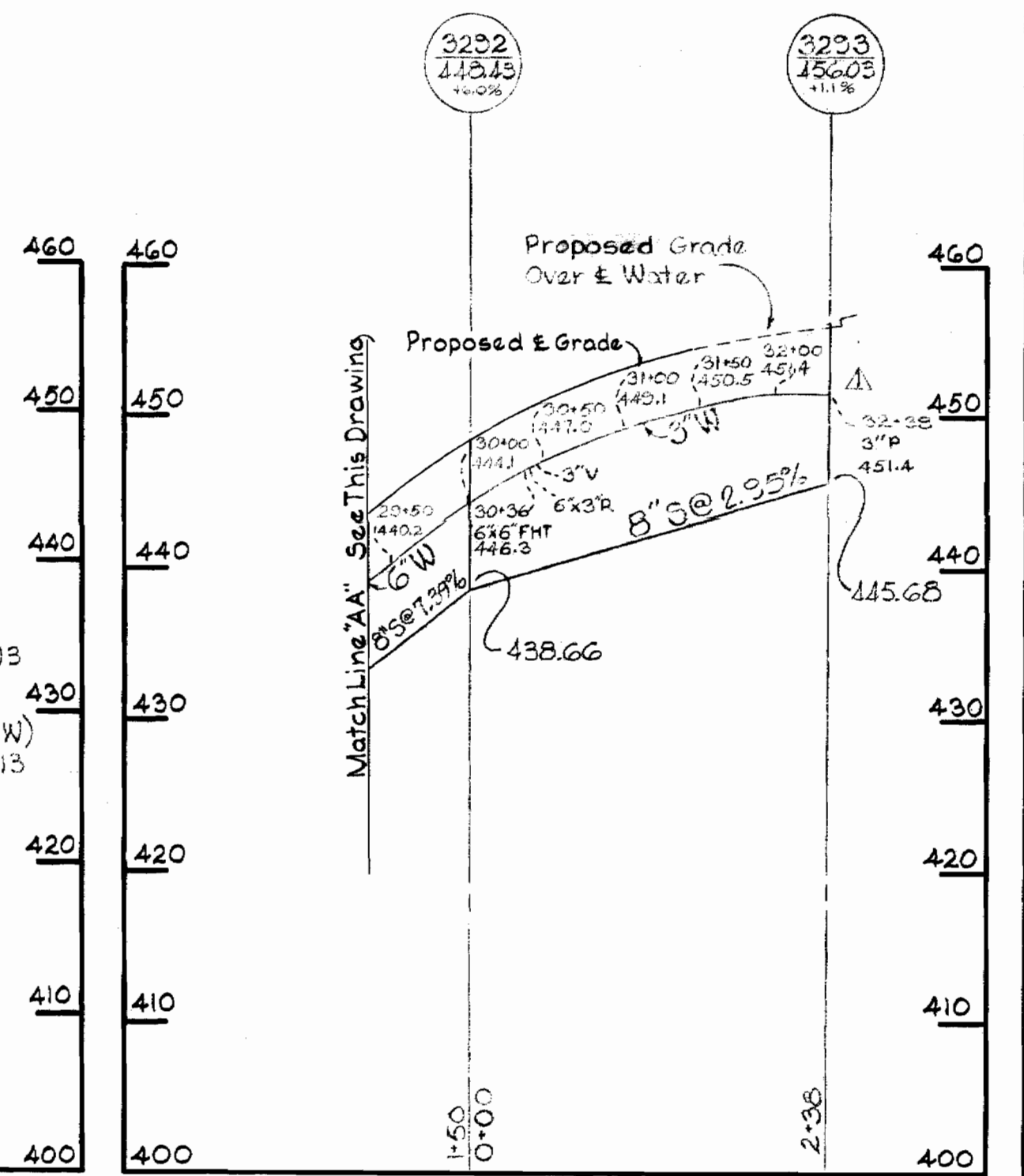
BILLINGSGATE ROAD



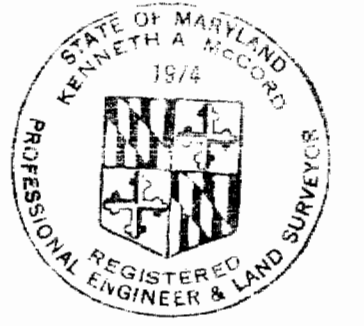
BATTERSEA LANE



SWANSFIELD ROAD



9-5-68	Revised valve locations on 8" Water Main	
9-4-68	Revised water & sewer in cul-de-sacs	
No.	Date	Revision



*Kenneth A. McLeod*

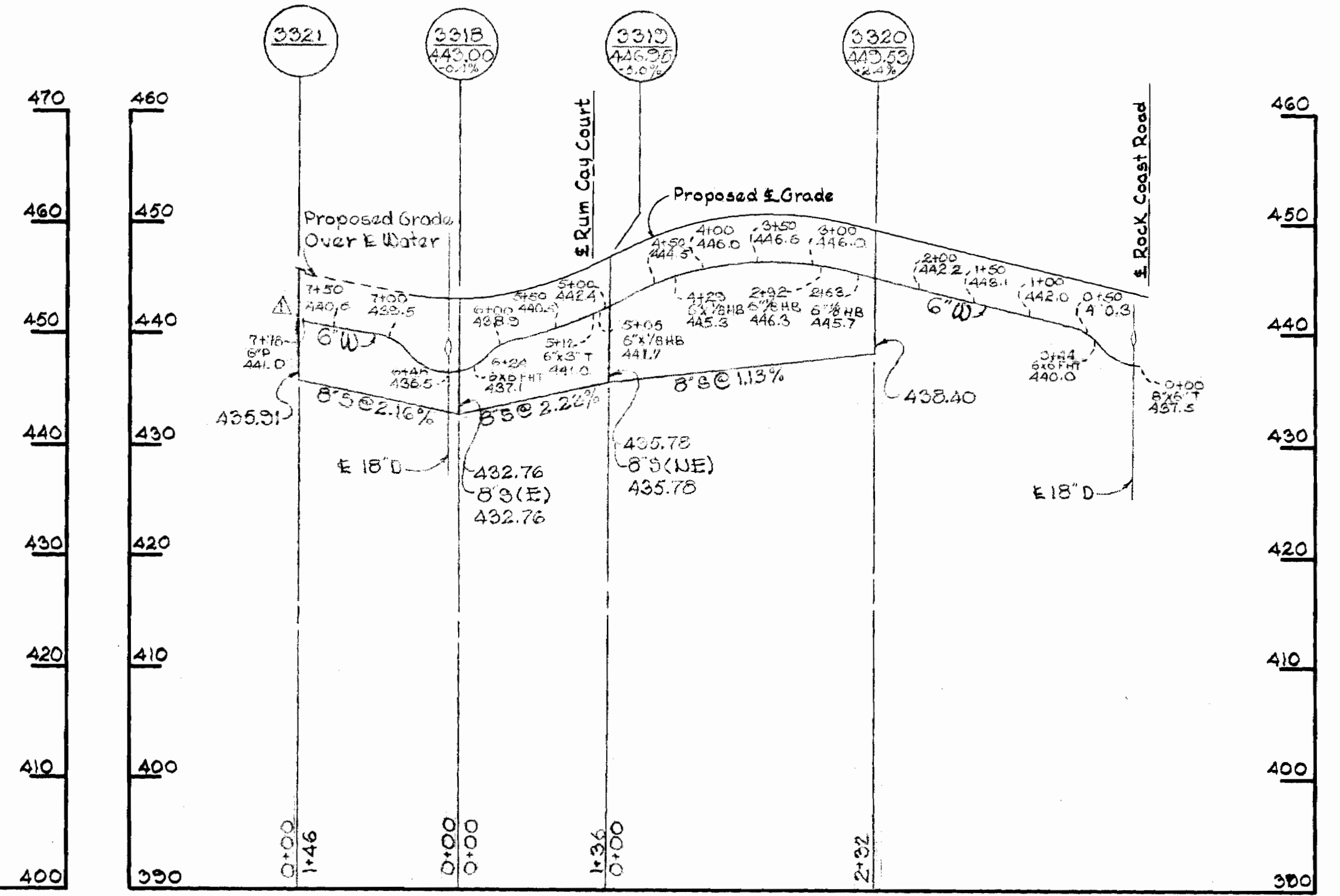
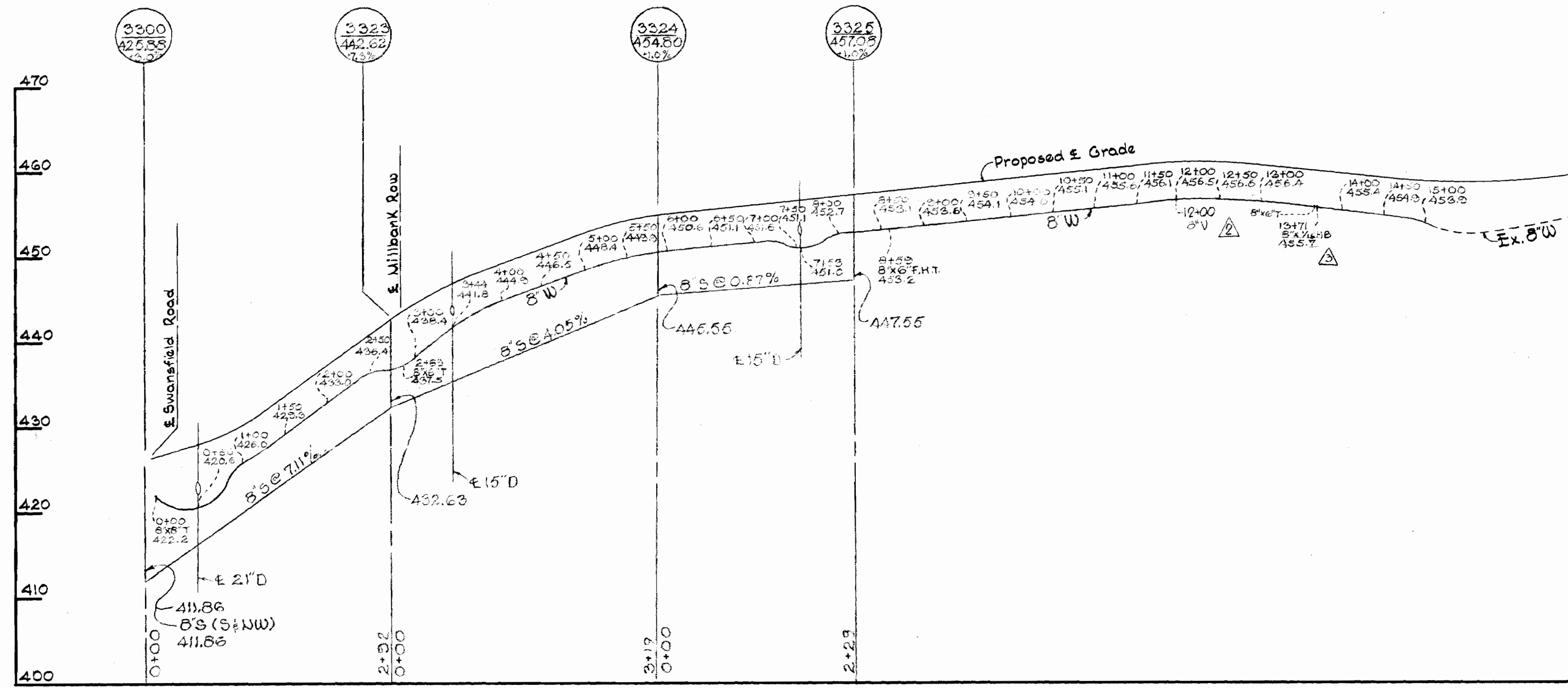
WHITMAN, REQUARDT & ASSOCIATES ENGINEERS 1304 ST. PAUL ST. BALTIMORE, MARYLAND	HOWARD COUNTY METROPOLITAN COMMISSION 8-8-68 <i>W O F. West</i> DATE CHIEF ENGINEER	CONTRACT NO. C-258-WBS	PROFILES OF WATER & SEWER MAINS	COLUMBIA VILLAGE OF HARPER'S CHOICE ELECTION DISTRICT CLARKVILLE NO. 5	DRAWING NO. 5 OF 7 SCALE H-1"=100 V-1"=10'
---	---	------------------------	------------------------------------	--	---

258-WS/5



ROCK COAST ROAD

MILLBANK ROW

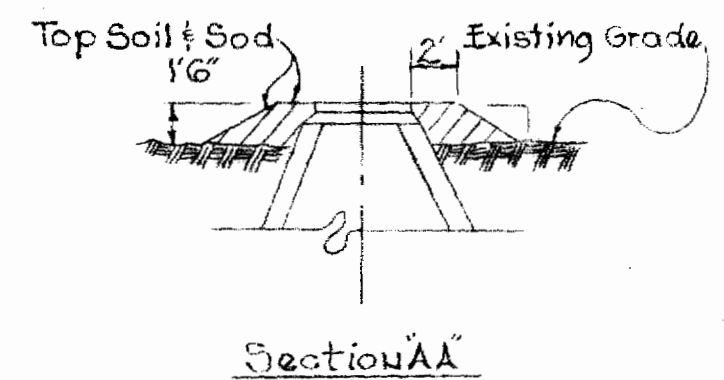
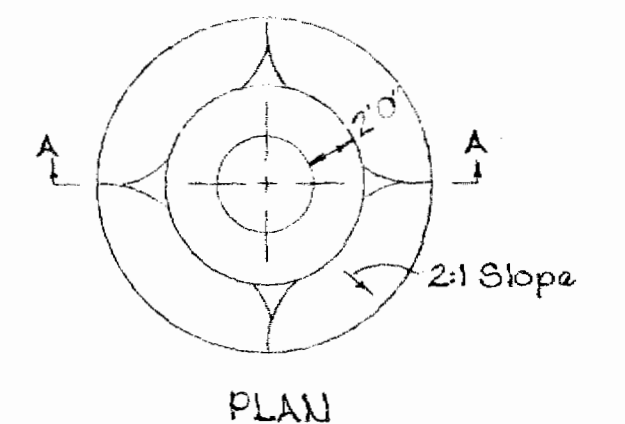
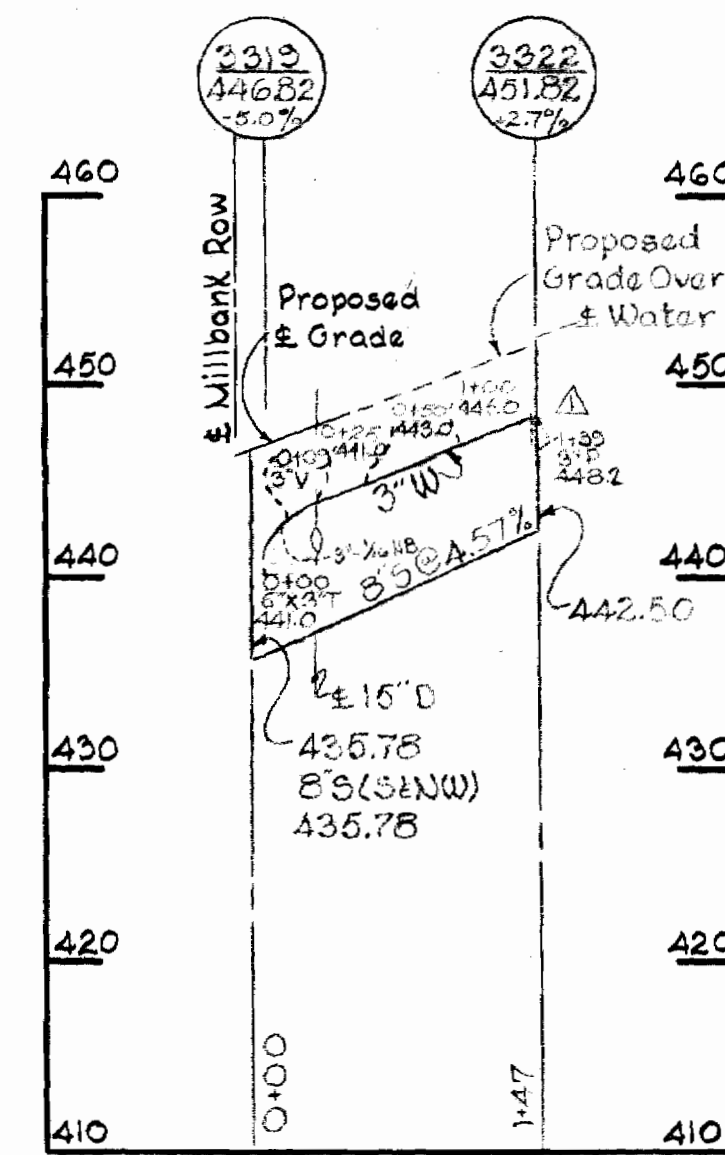
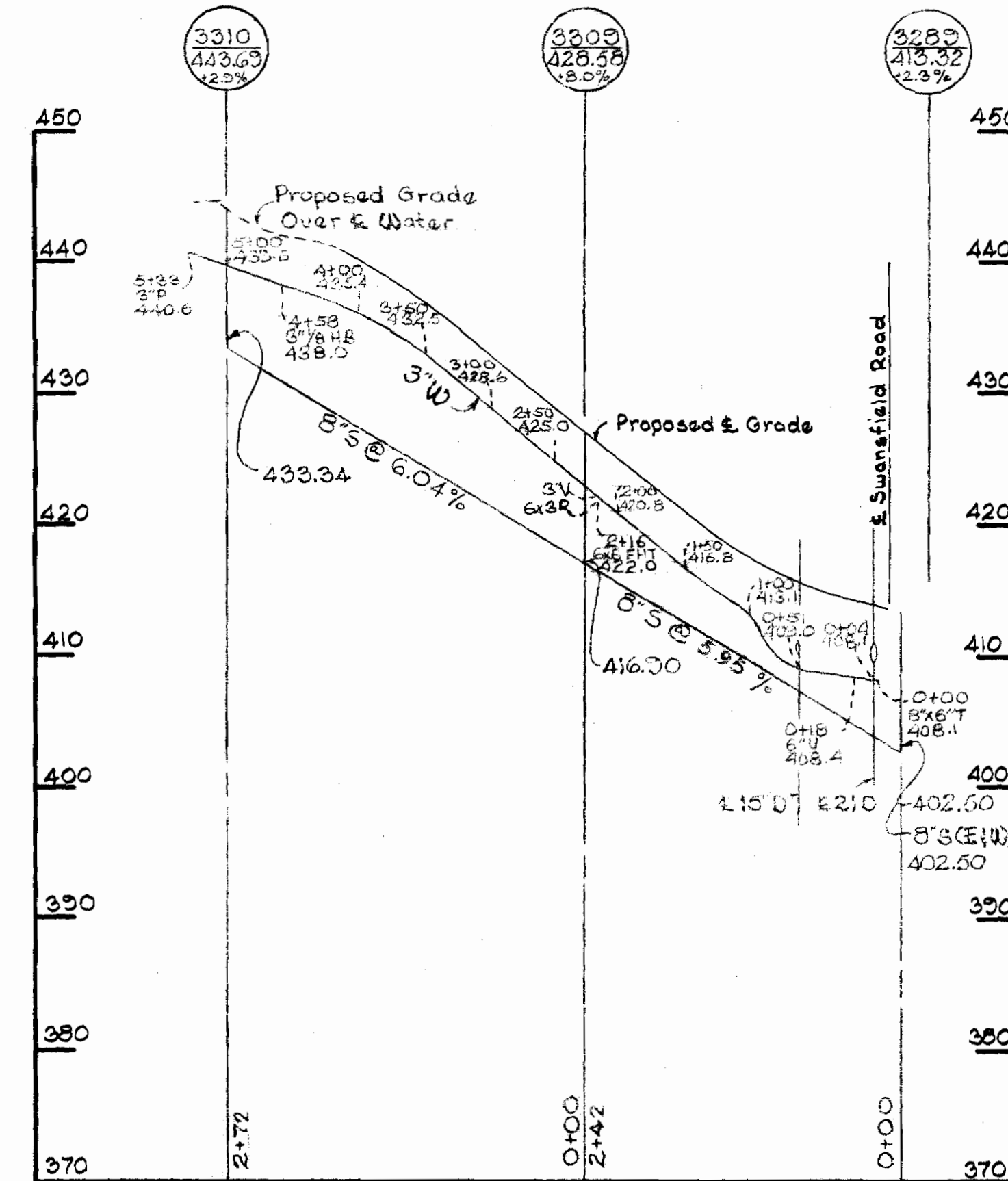
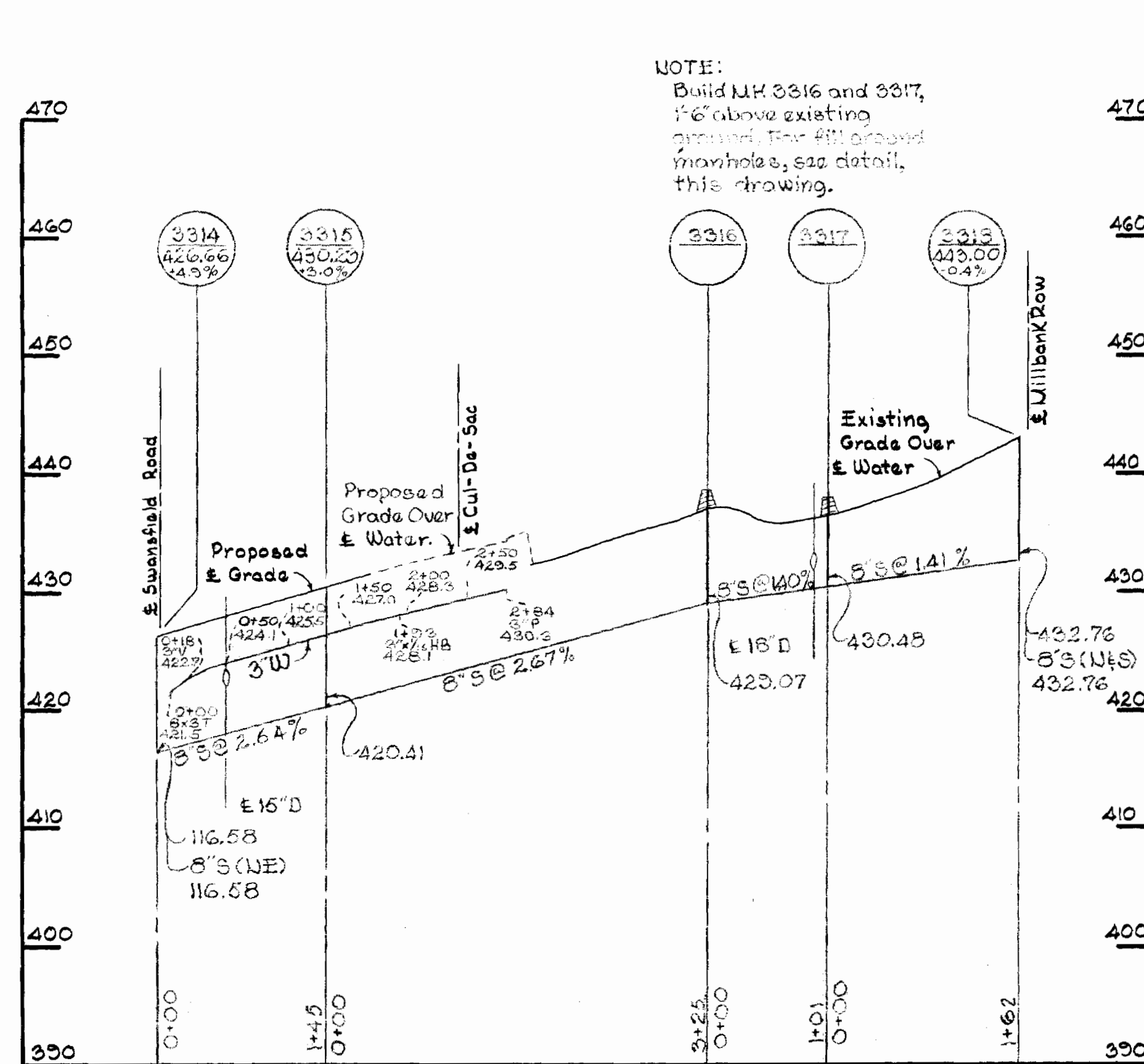


TWO SHIPS COURT

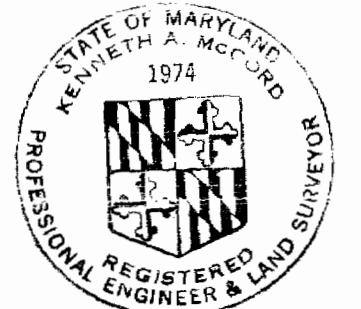
EIGHT BELLS LAKE

RUM CAY COURT

NOTE:  
Build MH 3316 and 3317,  
1'6" above existing  
ground. For fill around  
manholes, see detail,  
this drawing.



FILL AT MANHOLE  
No Scale



*Kenneth A. McLeod*

Swansfield  
Contract No. C-258

No.	Date	Revision
A	10-3-63	Added 8" x 6" T on water main
B	9-5-68	Revised valve locations on 8" Water Main
C	9-4-68	Revised water & sewer in cul-de-sacs

WHITMAN, REQUARDT & ASSOCIATES  
ENGINEERS  
1304 ST. PAUL ST.  
BALTIMORE, MARYLAND

HOWARD COUNTY METROPOLITAN COMMISSION  
8-9-68  
DATE  
W. O. Falbert  
CHIEF ENGINEER

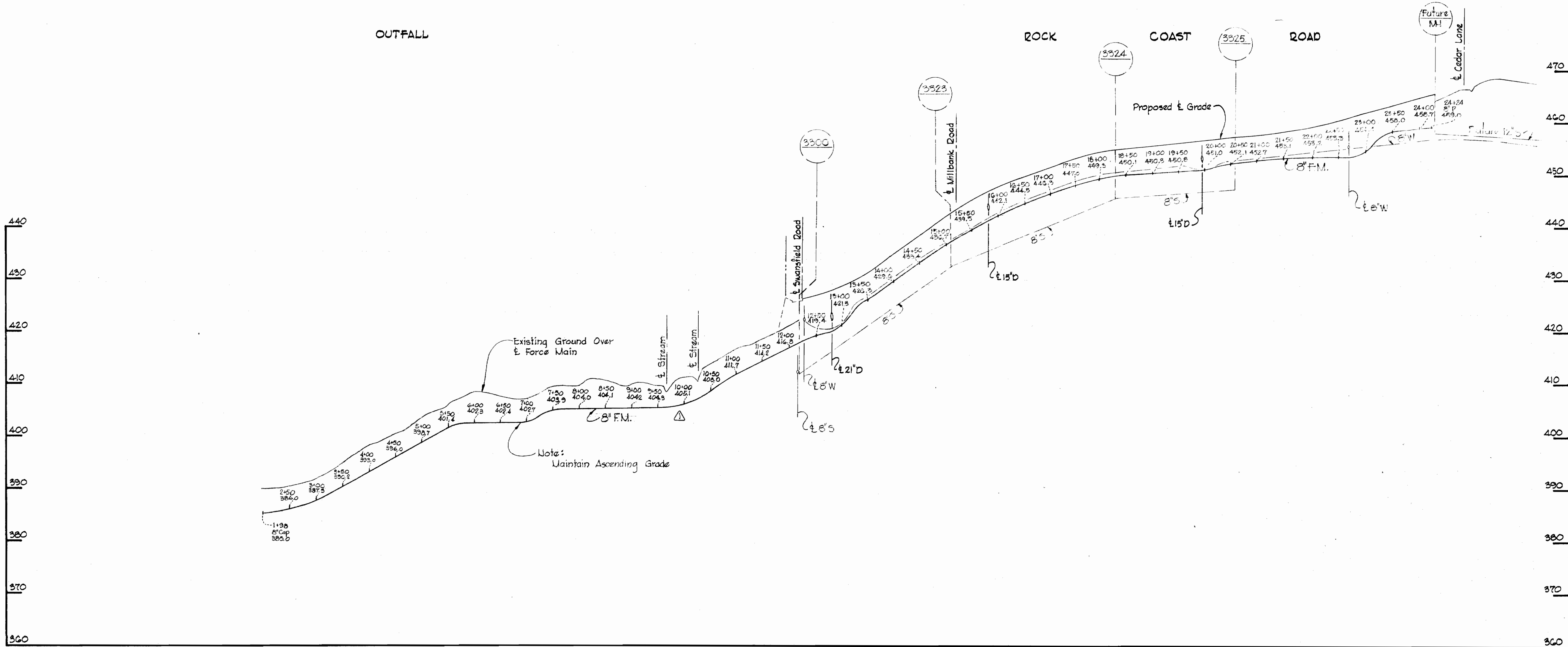
CONTRACT NO. C-258-WB5

PROFILES OF  
WATER & SEWER MAINS

COLUMBIA  
VILLAGE OF HARPER'S CHOICE  
ELECTION DISTRICT CLARKSVILLE NO. 5

DRAWING  
NO. 6  
OF 7  
SCALE  
H-1"=100'  
V-1"=10'

9/CM-207



△	5-24-68	Revised Length & Profile of Force Main
No.	Date	Revision



*Kenneth A. McCord*

Swansfield  
Contract U-C-258

WHITMAN, REQUARDT & ASSOCIATES ENGINEERS 1304 ST. PAUL ST. BALTIMORE, MARYLAND	HOWARD COUNTY METROPOLITAN COMMISSION 8-8-68 DATE <i>WOF</i> CHIEF ENGINEER	CONTRACT NO. C-258-WAS	PROFILES OF WATER & SEWER MAINS	COLUMBIA VILLAGE OF HARPER'S CHOICE ELECTION DISTRICT CLARKSVILLE NO.5	DRAWING NO. 7	SCALE H-1"=100' V-1"=10'
					OF 7	