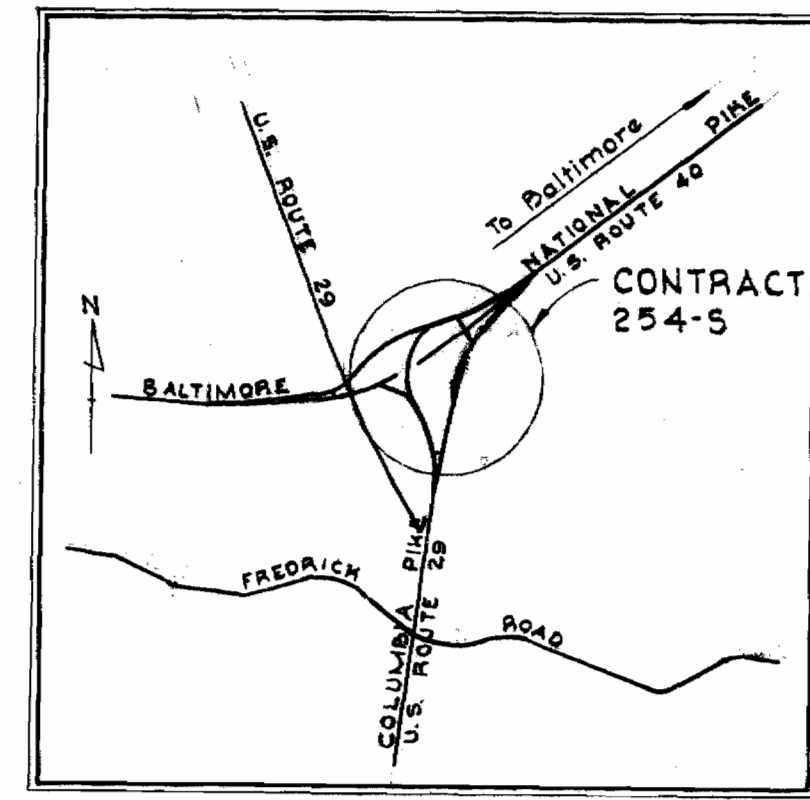
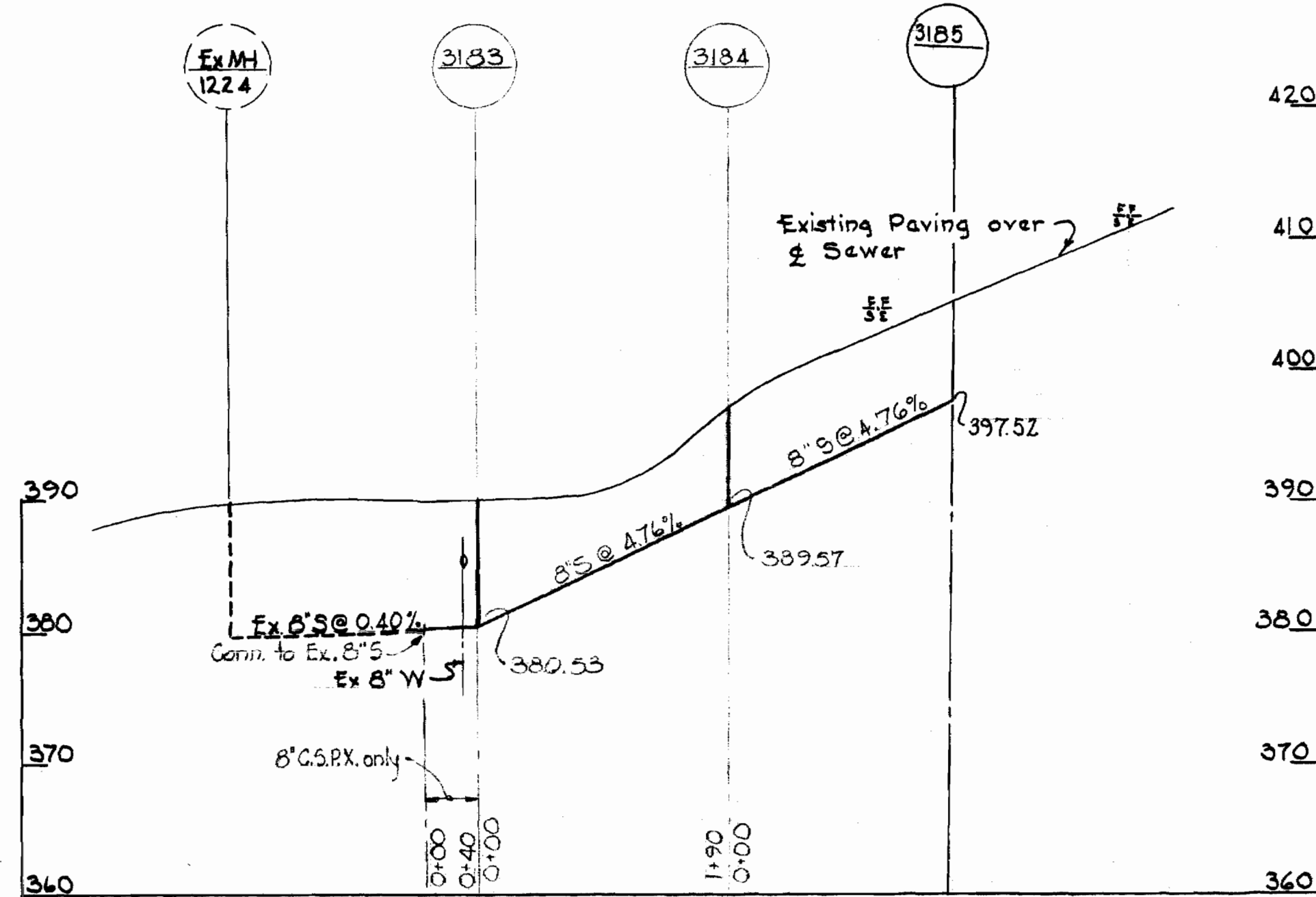
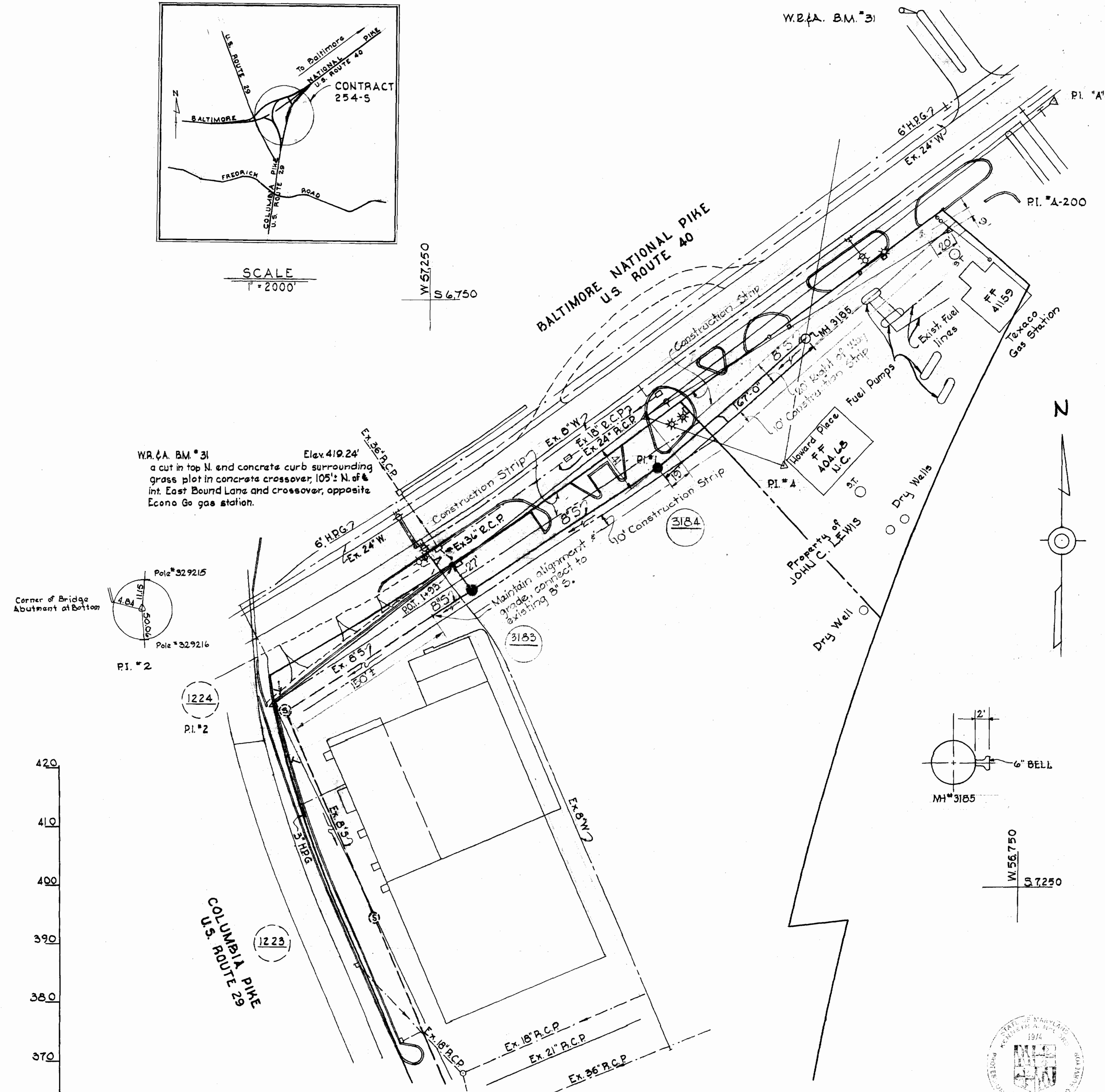


# GENERAL NOTES

1. Approximate location of existing mains are shown. The Contractor shall take all necessary precautions to protect existing mains and services and maintain uninterrupted supply. Any damage incurred shall be repaired immediately.
2. All pipe elevations shown are invert elevations.
3. The Contractor shall locate existing utilities a minimum of two weeks in advance of construction operations in vicinity of utilities.
4. For all standard details see standards bound in Specifications.
5. All elevations shown are based on Howard County Datum.
6. Clear all utilities by a minimum of 6'; clear all poles by 2'-0" minimum or tunnel as required.
7. House connections shall be constructed only where and if directed by the Engineer in the field.
8. The Contractor shall provide a joint in all sewer mains within 2'-0" of exterior manhole walls.
9. All Sewer shall be V.C.P.X., C.S.P.X., or Asbestos Cement Class 2400 unless otherwise noted.
10. Manholes are to be built to existing paving.



SCALE  
1" = 2000'



**PROFILE**  
Scale: Horz. 1" = 100'  
Vert. 1" = 10'

**PLAN**  
Scale: 1" = 50'



*Kenneth J. Meland*

Contract No 254-S

WHITMAN, REQUARDT & ASSOCIATES ENGINEERS 1304 ST. PAUL ST. BALTIMORE, MARYLAND	HOWARD COUNTY METROPOLITAN COMMISSION 6-26-68 DATE <i>W O Pilbert</i> CHIEF ENGINEER	CONTRACT NO. 254-S	PLAN & PROFILE OF SEWER MAINS	ELECTION DISTRICT ELLICOTT CITY NO-2	DRAWING NO. 1 OF 1 SCALE AS SHOWN
---	--	--------------------	----------------------------------	---	--------------------------------------

254-S/1