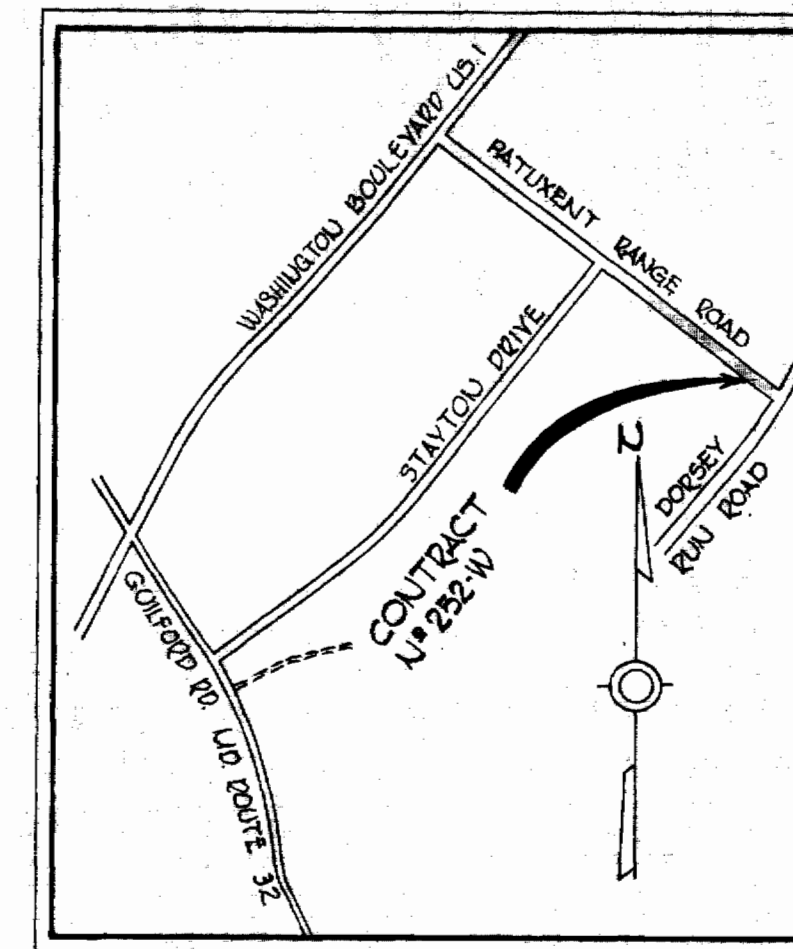


W12&A, BM#8-A Elev. 261.11
 80 penny nail in 3" Oak, 345' west of
 Station Drive on Patuxent Range Road

Remove Buttress and
 Plug and connect to
 existing 12" W

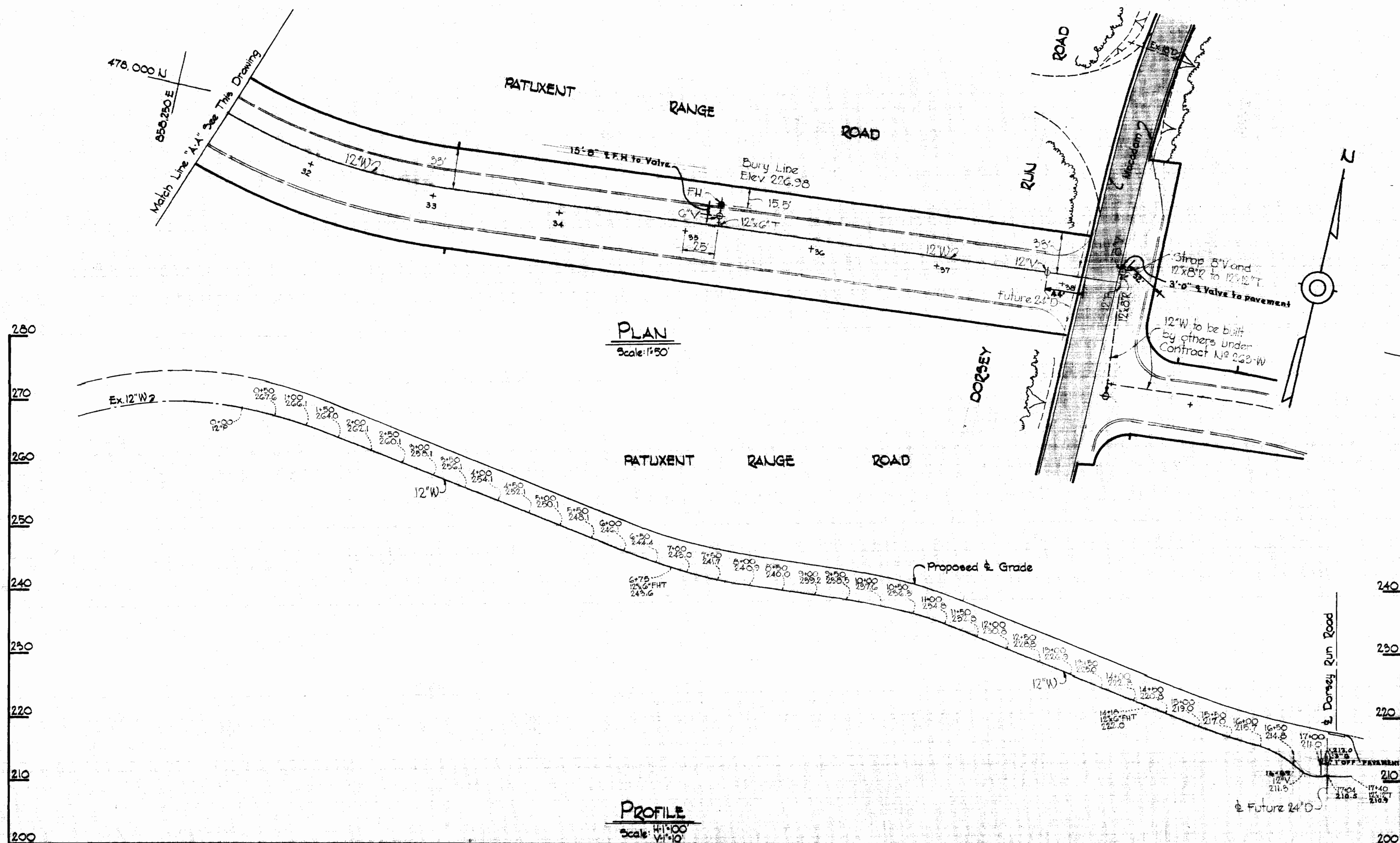
Existing 12" W built
 by others under
 Contract N# 234-W-3



VICINITY MAP
 Scale: 1"=1200'

GENERAL NOTES

1. Approximate location of existing mains are shown. The Contractor shall take all necessary precautions to protect existing mains and services and maintain uninterrupted supply. Any damage incurred shall be repaired immediately.
2. All pipe elevations shown are invert elevations.
3. The Contractor shall locate existing utilities a minimum of two weeks in advance of construction operations in vicinity of utilities.
4. For all standard details see Standards bound in Specifications.
5. All water mains to be CIP or DIP and have a minimum of 3' cover.
6. Block all fittings with concrete, see standard details bound in Specifications.
7. Bury Line elevations on fire hydrants shall be set to the elevations shown on the drawings.
8. Cost of strapping fire hydrants and valves to trees to be included in the unit price bid for furnishing and laying water mains.
9. All fire hydrants shall be strapped in accordance with Standard Details W-4, W-5 and W-6A.
10. Clear all utilities by a minimum of 6', clear all poles by 2'-0" minimum or tunnel as required.



STAKE OUT IN F.B. # 4116 (252 W1S, 234 W1S)

QUANTITIES	
12" Water Mains	1,740 LF
Fire Hydrants	2



Kenneth A. McCord

Baltimore Washington Industrial Park
 Contract N# 252-W

WHITMAN, REQUARDT & ASSOCIATES ENGINEERS 1304 ST. PAUL ST. BALTIMORE, MARYLAND	HOWARD COUNTY METROPOLITAN COMMISSION 10-10-68 <i>W O Palwick</i> CHIEF ENGINEER	CONTRACT NO. 252-W	PLAN AND PROFILE OF WATER MAINS	ELECTION DISTRICT GUILFORD NO. 6	DRAWING NO. 1 OF 1	SCALE AS SHOWN <small>56 500 54 475 491 477 491</small>

WS 252-W/1