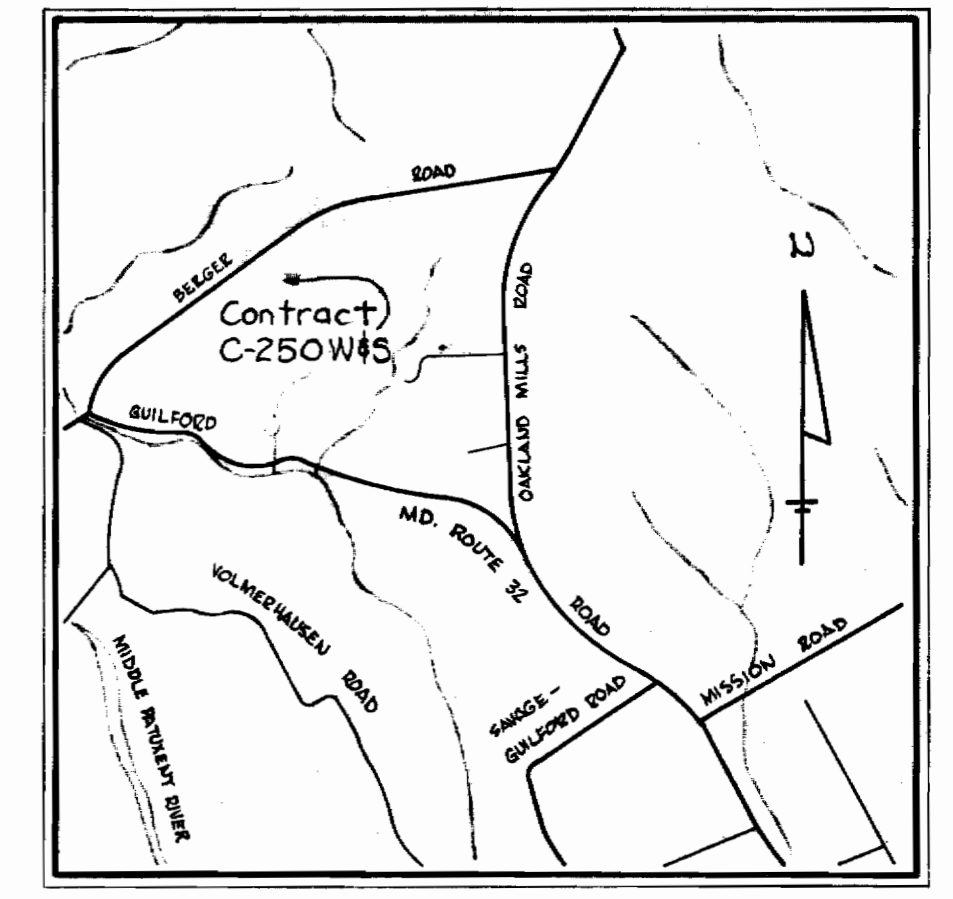


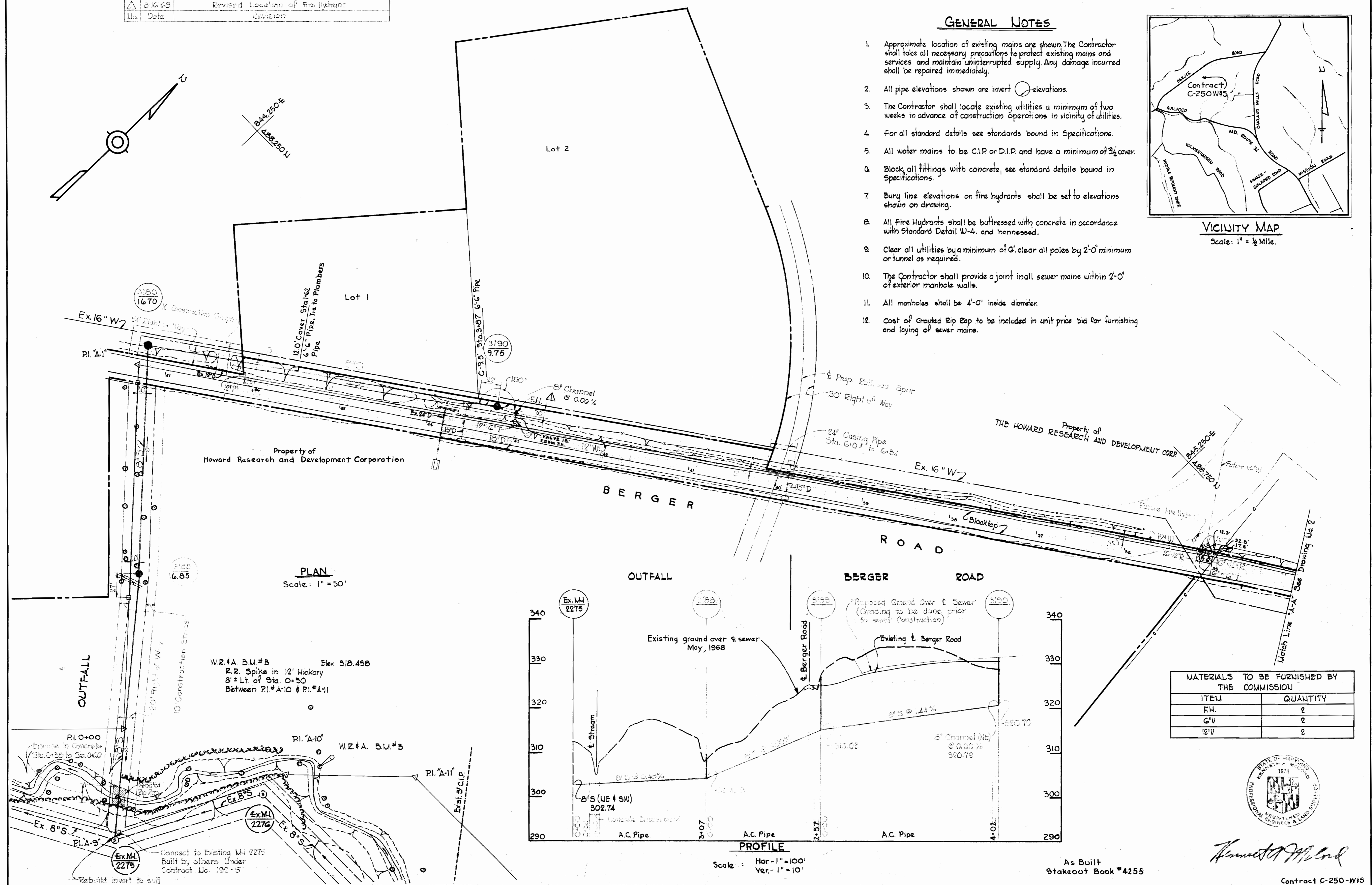
△	8-16-68	Revised Location of Fire Hydrant
No.	Date	Revision

GENERAL NOTES

1. Approximate location of existing mains are shown. The Contractor shall take all necessary precautions to protect existing mains and services and maintain uninterrupted supply. Any damage incurred shall be repaired immediately.
2. All pipe elevations shown are invert elevations.
3. The Contractor shall locate existing utilities a minimum of two weeks in advance of construction operations in vicinity of utilities.
4. For all standard details see standards bound in Specifications.
5. All water mains to be C.I.P. or D.I.P. and have a minimum of 3 1/2' cover.
6. Block all fittings with concrete, see standard details bound in Specifications.
7. Bury line elevations on fire hydrants shall be set to elevations shown on drawing.
8. All Fire Hydrants shall be buttressed with concrete in accordance with Standard Detail W-4. and hennessed.
9. Clear all utilities by a minimum of 6', clear all poles by 2'-0" minimum or tunnel as required.
10. The Contractor shall provide a joint in all sewer mains within 2'-0" of exterior manhole walls.
11. All manholes shall be 4'-0" inside diameter.
12. Cost of Grouted Rip Zap to be included in unit price bid for furnishing and laying of sewer mains.



VICINITY MAP
Scale: 1" = 1/2 Mile.



MATERIALS TO BE FURNISHED BY THE COMMISSION	
ITEM	QUANTITY
F.H.	2
6\"/>	



Handwritten signature
As Built Stakeout Book #4255

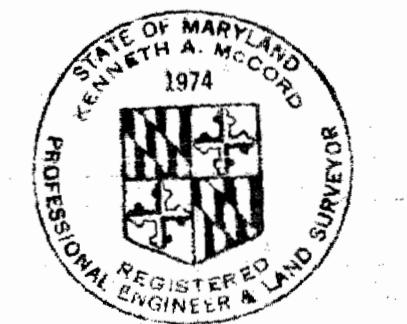
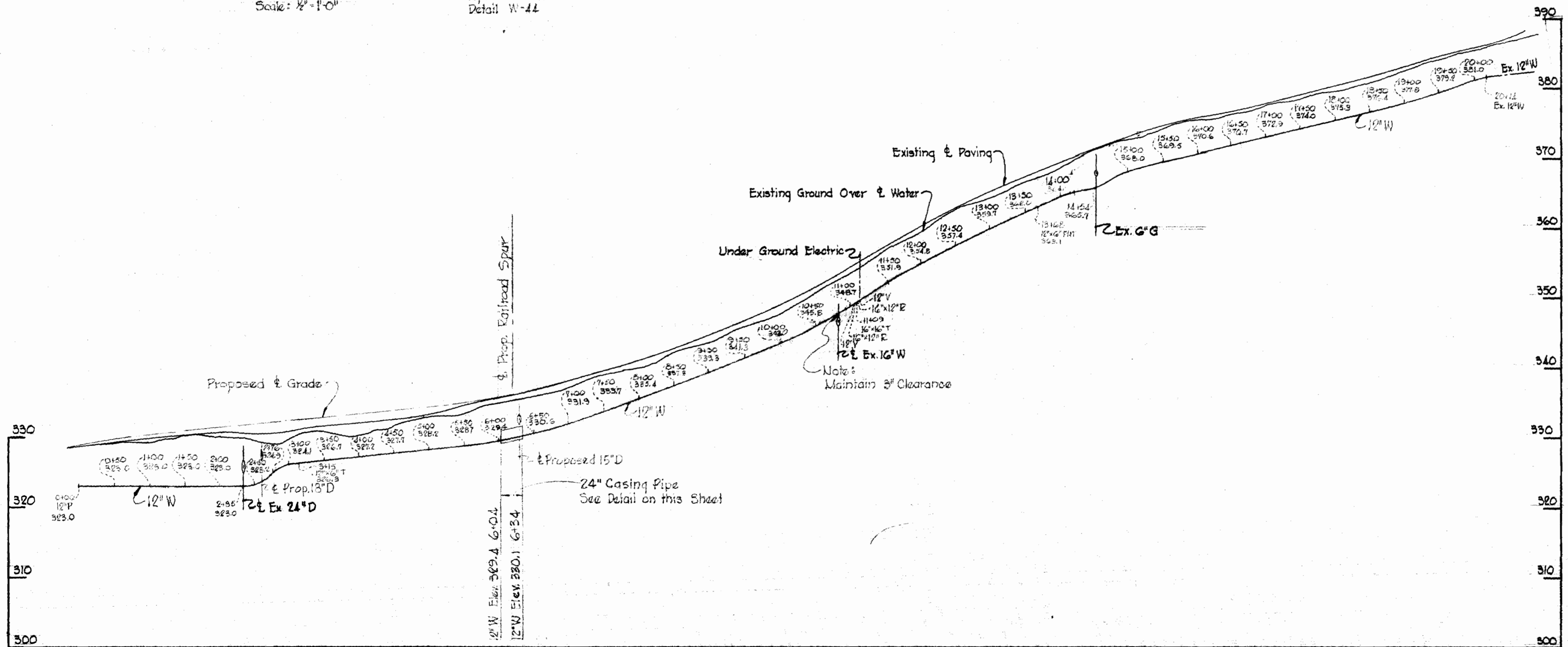
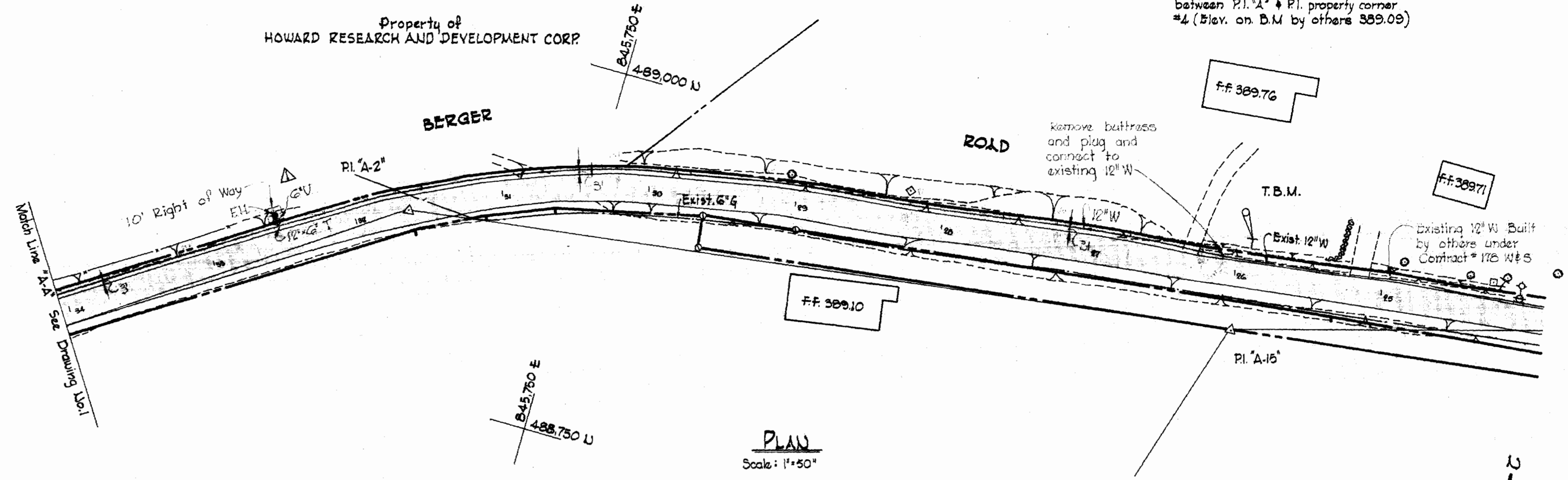
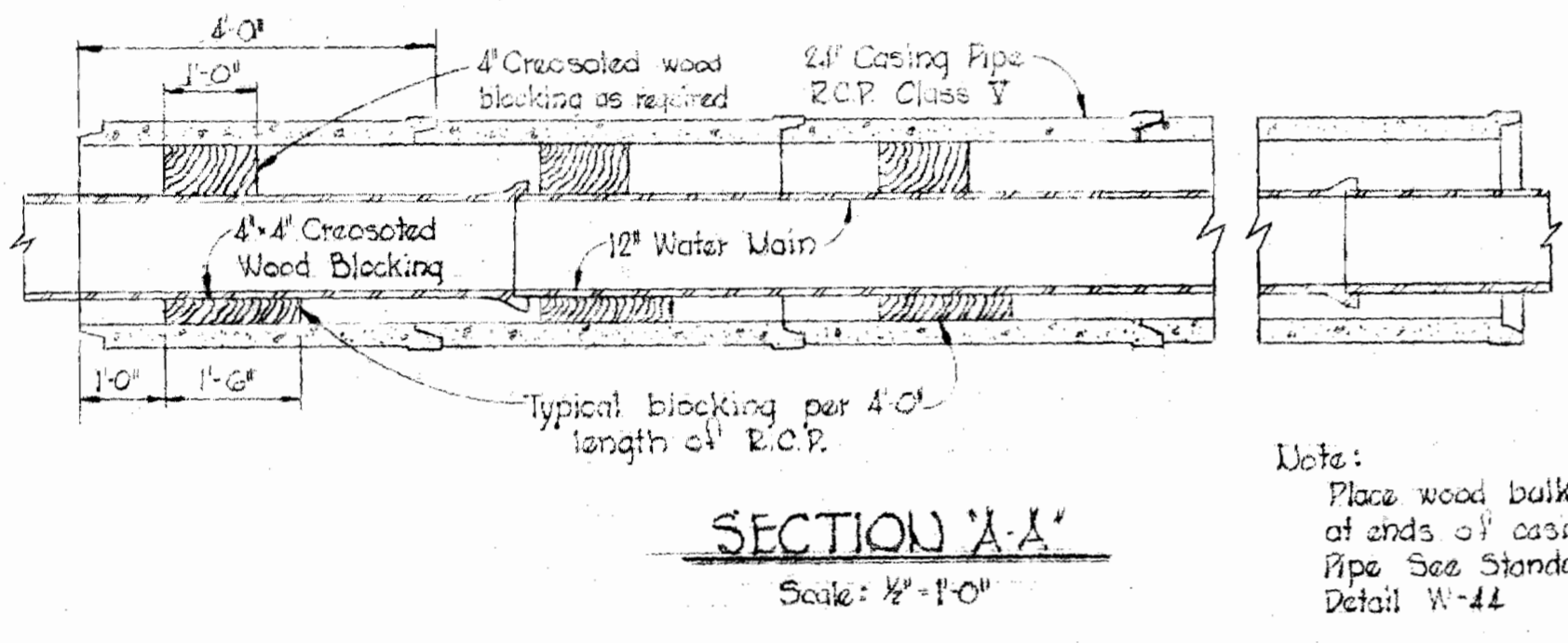
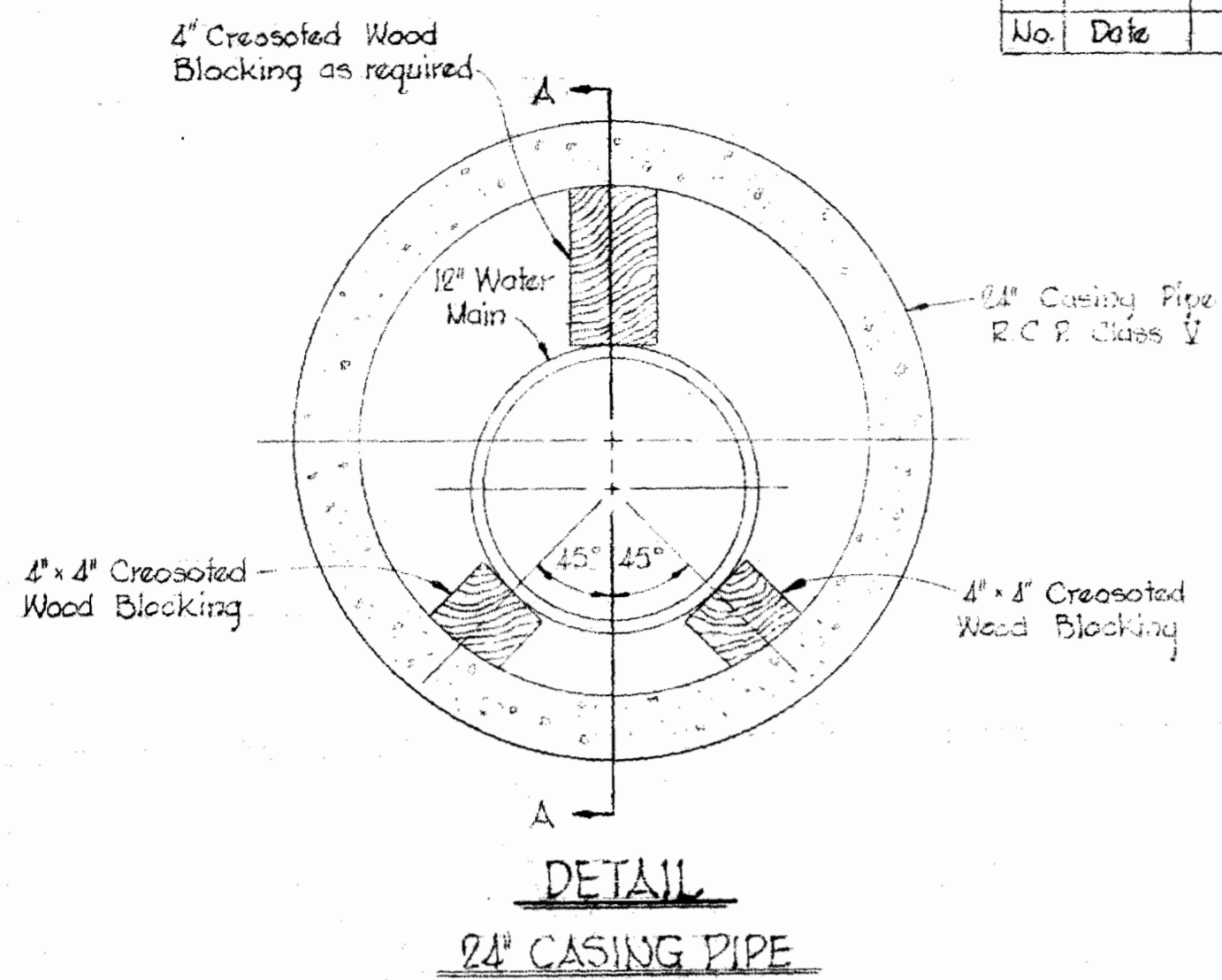
Contract C-250-W15

WHITMAN, REQUARDT & ASSOCIATES ENGINEERS 1304 ST. PAUL ST. BALTIMORE, MARYLAND	HOWARD COUNTY METROPOLITAN COMMISSION 8-14-68 <i>W. O. F. Albert</i> DATE CHIEF ENGINEER	CONTRACT NO. C-250-W15	PLAN AND PROFILES WATER AND SEWER MAINS	COLUMBIA E. G. U. WATER AND SEWER EXTENSIONS ELECTION DISTRICT GUILFORD NO. 6	DRAWING NO. 1 OF 2	SCALE AS SHOWN
						485-483 485-484 487-485

200-WS/2

No.	Date	Revision
1	8-14-68	Revised Location of Fire Hydrant

T.B.M. Elev. 388.945
Galvanized spike in power pole
359151. North side Berger Road
between P.I. 'A' & P.I. property corner
#4 (Elev. on B.M. by others 389.09)



Kenneth A. McCord

Contract C-250-W15

WHITMAN, REQUARDT & ASSOCIATES ENGINEERS 1304 ST. PAUL ST. BALTIMORE, MARYLAND	HOWARD COUNTY METROPOLITAN COMMISSION 8-14-68 DATE	CONTRACT NO. C-250-W15	PLANS AND PROFILES OF WATER & SEWER MAINS	COLUMBIA E. G. U. WATER & SEWER EXTENSIONS ELECTION DISTRICT GUILFORD NO. 6	DRAWING NO. 2 OF 2	SCALE AS SHOWN 1/8"=1'-0"
--	---	-------------------------------	--	--	---------------------------------	---

W. O. 6023-2

AS BUILT JAN. 6, 1969