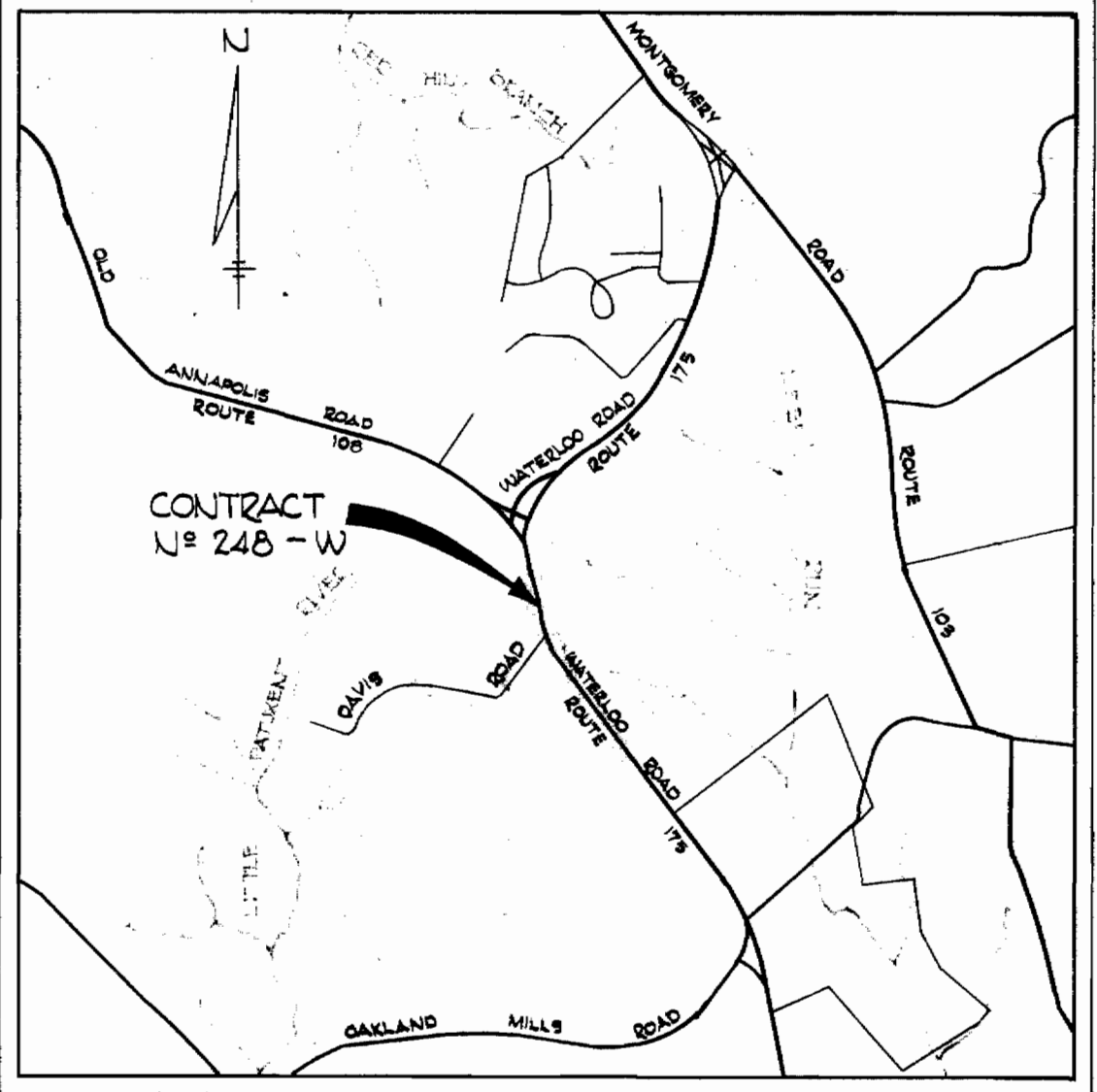
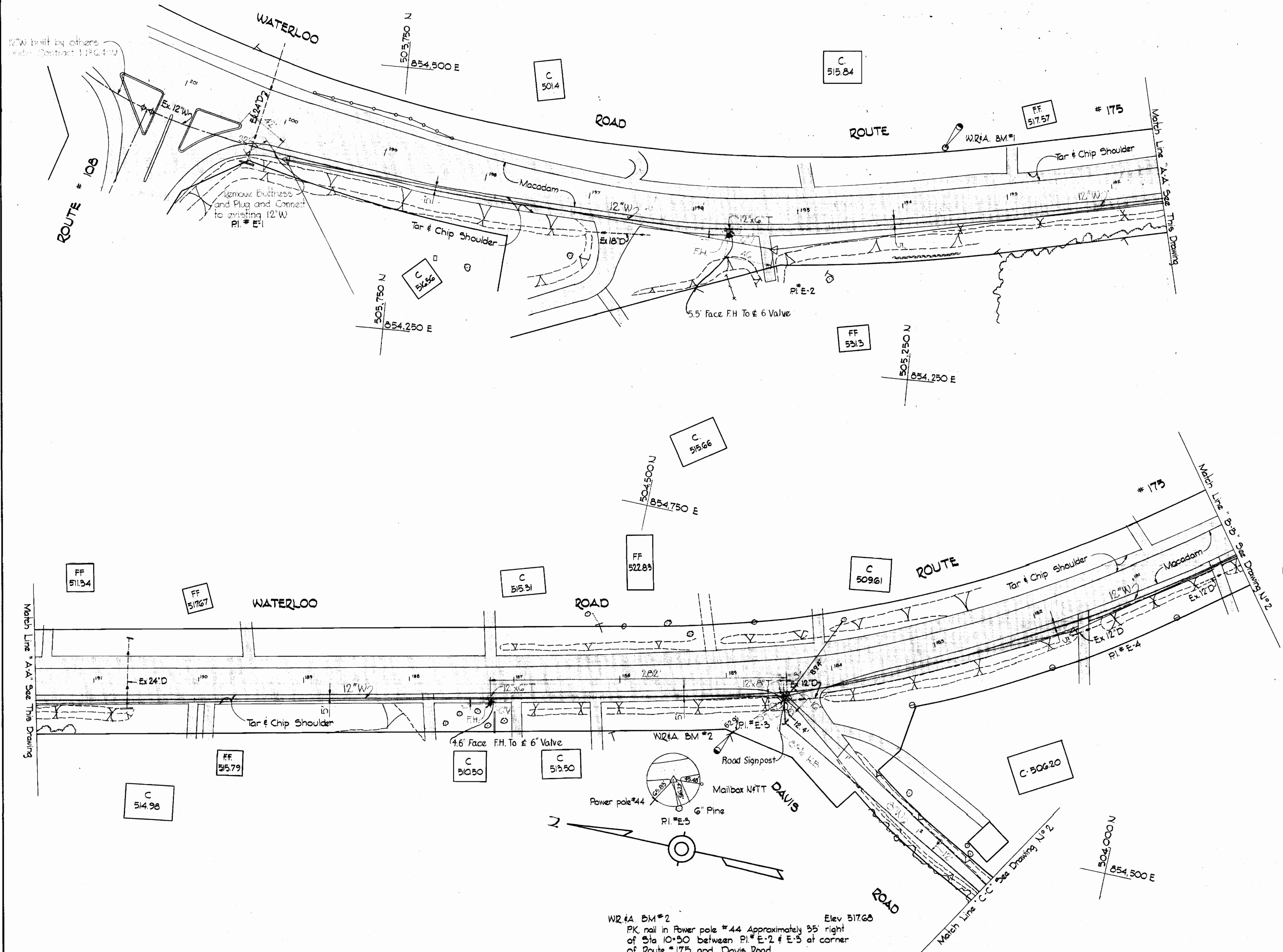


WZ&A BM #1  
 PK nail in root of 16" Oak 60' left of Sta.  
 1+67 Between PI #E-2 and PI #E-3. On East  
 side of Route #175.  
 Elev 525.93



VICINITY MAP  
 Scale: 1" = 1/2 mile

GENERAL NOTES

1. Approximate locations of existing mains are shown. The Contractor shall take all necessary precautions to protect the existing mains and maintain uninterrupted supply. Any damage incurred shall be repaired immediately.
2. All pipe elevations are invert  $\odot$  elevations.
3. The Contractor shall locate existing utilities a minimum of two weeks in advance of construction operations in vicinity of utilities.
4. For all standard details see standards bound in Specifications.
5. All water mains to be C.I.P or D.I.P and have a minimum of 3 1/2' cover.
6. Block all fittings with concrete, see standard details bound in Specifications.
7. Bury line elevations on Fire Hydrants shall be set the same as top of curb, edge of paving, or as directed by the engineer in the field.
8. All Fire Hydrants to be buttressed with concrete in accordance with Standard Detail W-4.
9. Cost of strapping Fire Hydrants and Valves to be included in the unit price bid for furnishing and laying of water mains.
10. Clear all utilities by a minimum of 6', clear all poles by 2'-0" minimum or tunnel as required.

STAKEOUT DIARY IN F.B.# 4130



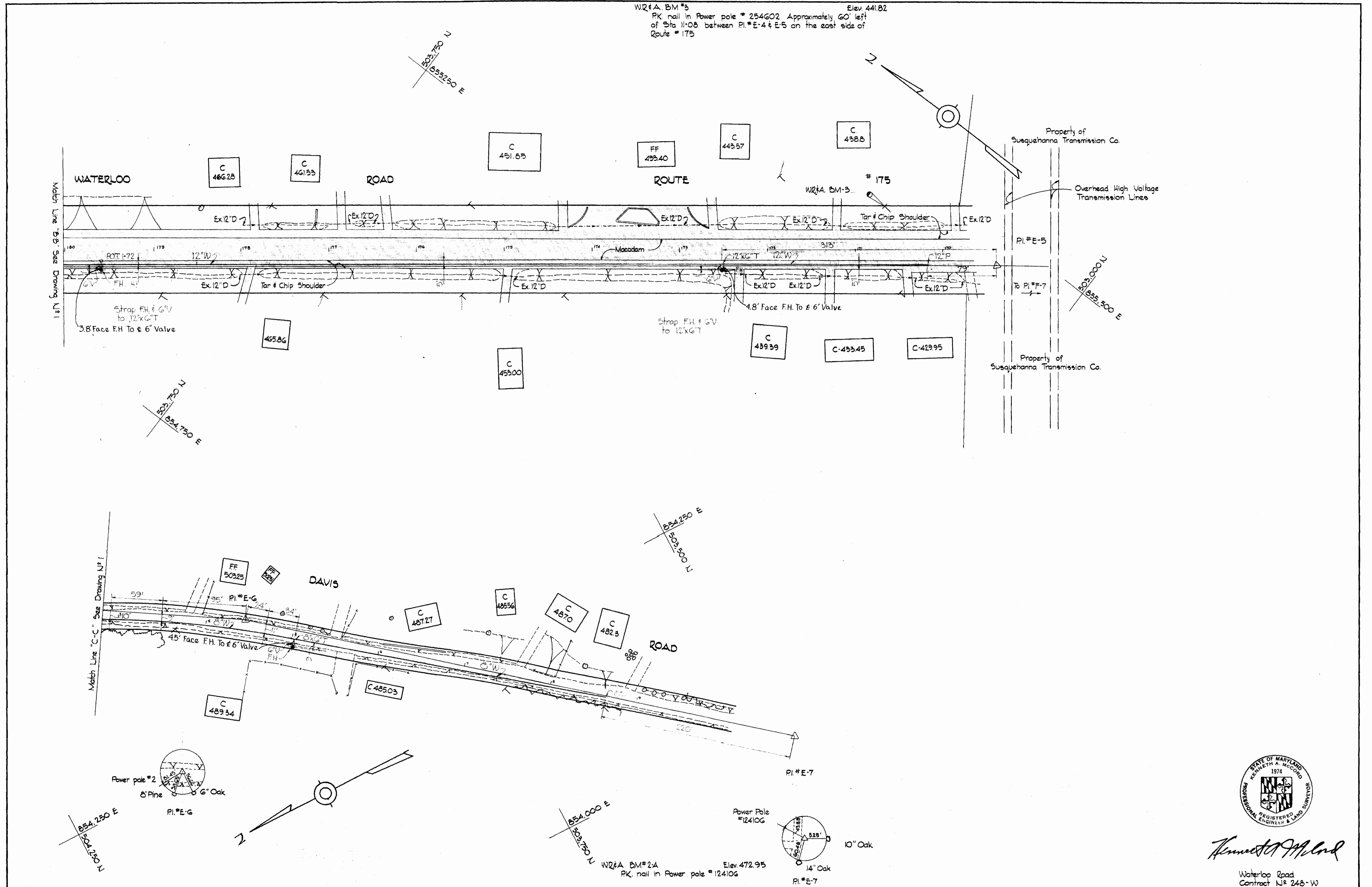
*Kenneth A. McCord*

Waterloo Road  
 Contract N° 248-W

248-W/1

WHITMAN, REQUARDT & ASSOCIATES ENGINEERS 1304 ST. PAUL ST. BALTIMORE, MARYLAND	HOWARD COUNTY METROPOLITAN COMMISSION DATE: 6-11-69 W O F. W. [Signature] CHIEF ENGINEER	CONTRACT NO. 248-W	PLAN OF WATER MAINS	ELECTION DISTRICTS GUILFORD NO. 6 & ELKRIDGE NO. 1	DRAWING NO. 1 OF 3 SCALE AS SHOWN 505-489 504-489 503-489 Sent 13 1969 FB # 4104
---	---	--------------------	------------------------	---	--

WS 248-W/2



WHITMAN, REQUARDT & ASSOCIATES  
 ENGINEERS  
 1304 ST. PAUL ST.  
 BALTIMORE, MARYLAND.

HOWARD COUNTY METROPOLITAN COMMISSION  
 6-11-68 *W. O. Elliott*  
 DATE CHIEF ENGINEER

CONTRACT NO. 248-W

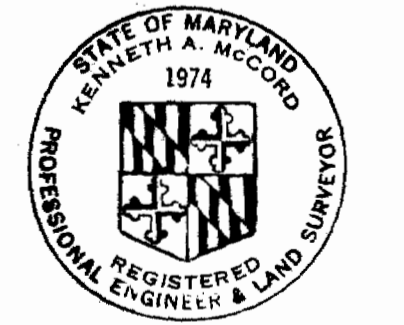
PLAN OF  
 WATER MAINS

ELECTION DISTRICTS  
 GUILFORD NO. 6 & ELKBRIDGE NO. 1

DRAWING NO. 2 OF 3 SCALE 1" = 50'

W. O. 6021-2

Sept. 13, 1968 FB 4104



*Kenneth A. McCord*

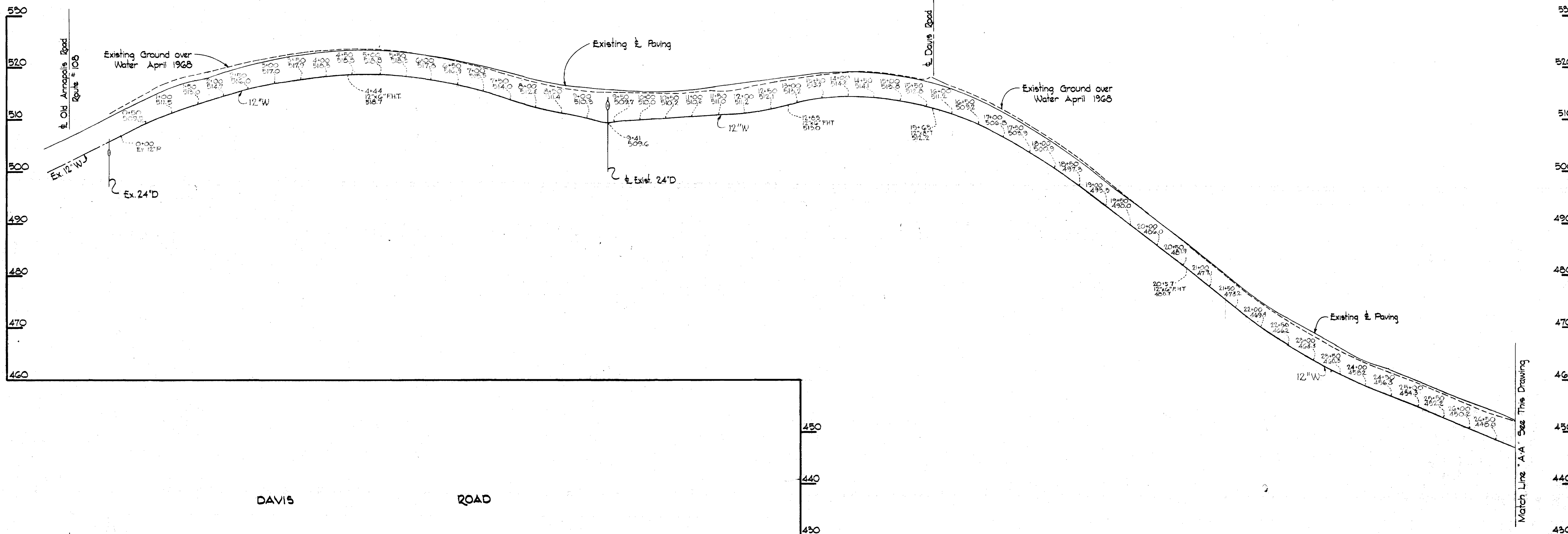
Waterloo Road  
 Contract No. 248-W

WATERLOO

ROAD

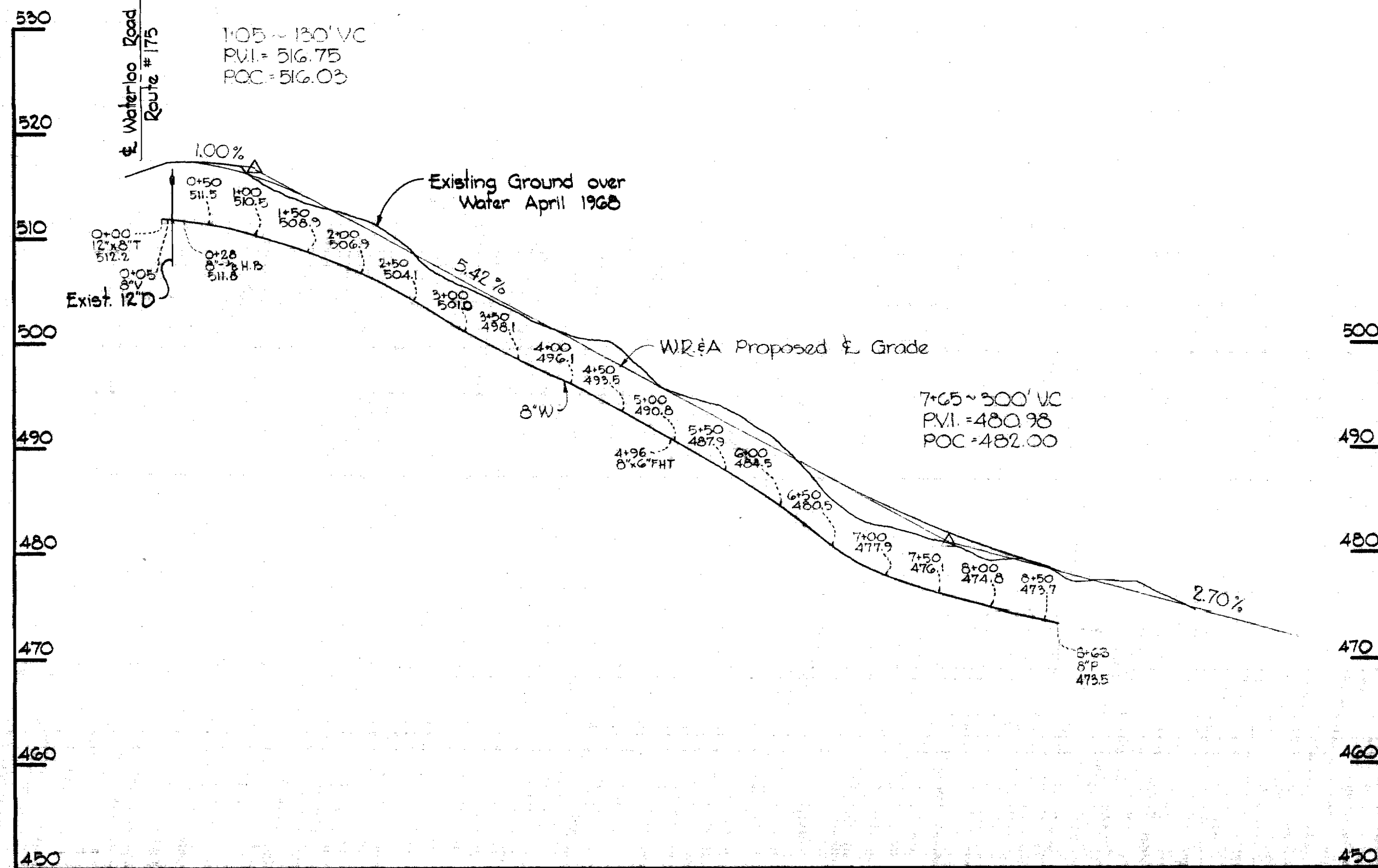
ROUTE

# 175

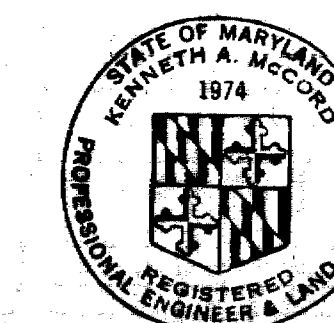
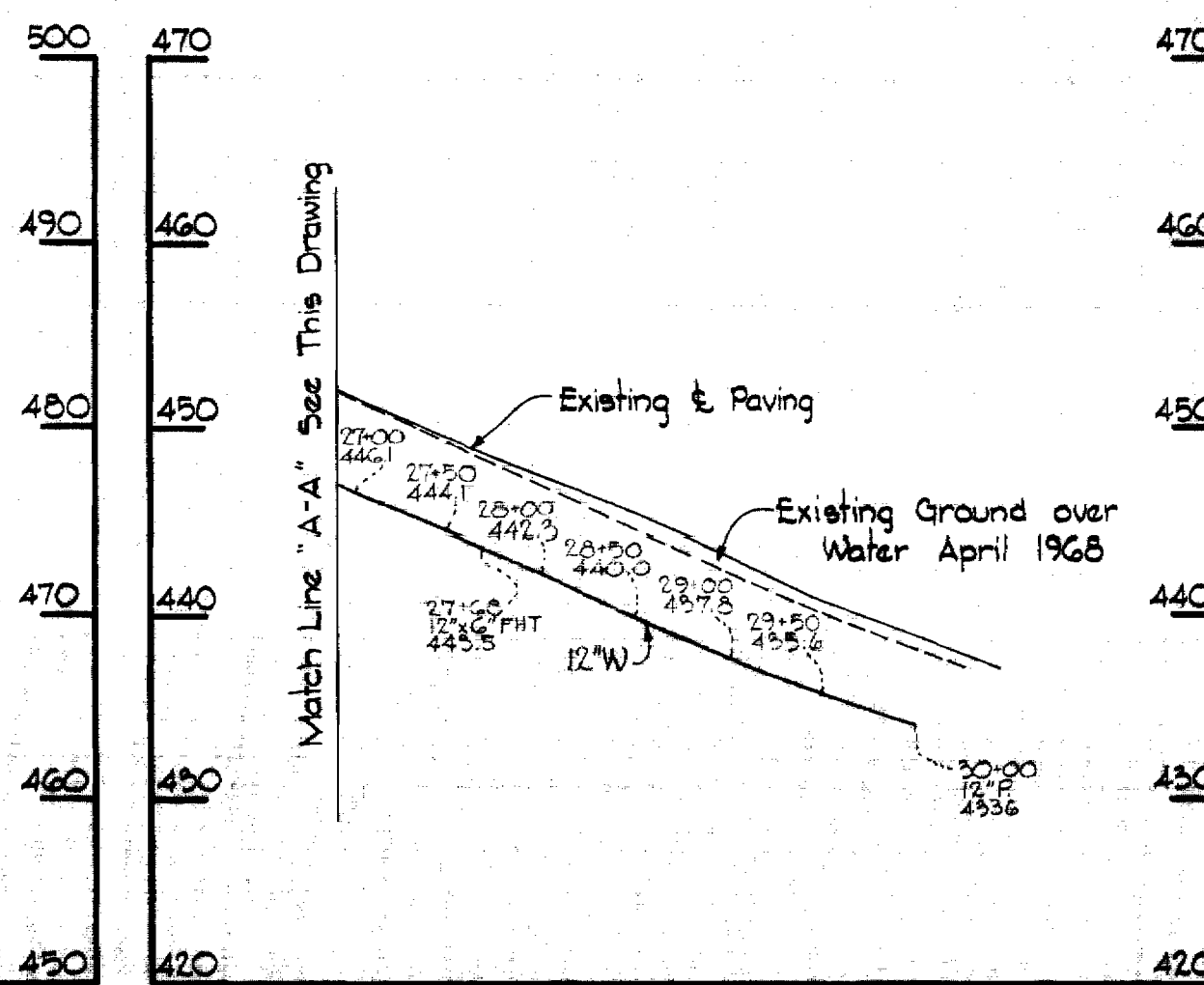


DAVIS

ROAD



WATERLOO ROAD ROUTE #175



*Kenneth A. McLeod*  
 Registered Professional Engineer & Land Surveyor

Waterloo Road  
 Contract NR 248-W

WHITMAN, REQUARDT & ASSOCIATES ENGINEERS 1304 ST. PAUL ST. BALTIMORE, MARYLAND	HOWARD COUNTY METROPOLITAN COMMISSION 6-11-68 DATE	CONTRACT NO. 248-W	PROFILES OF WATER MAINS	ELECTION DISTRICTS GUILFORD NO. 6 & ELKRIDGE NO. 1	DRAWING NO. 3 OF 3 SCALE H: 1"=100' V: 1"=10'
---	--	--------------------	----------------------------	---	---

W. O. GOZI-2

AS BUILT Sept 13, 1968

248-W/3