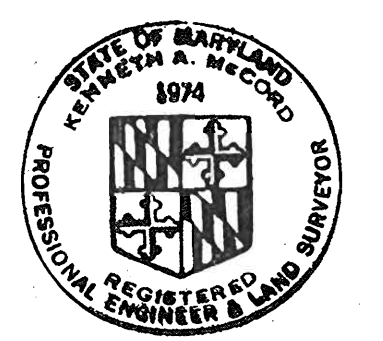


VICINITY MAP
Scale: 1" = 1/2 mile

GENERAL NOTES

1. Approximate location of existing mains are shown. The Contractor shall take all precautions to protect existing mains and services and maintain uninterrupted supply. Any damage incurred shall be repaired immediately.
2. All pipe elevations shown are invert elevations.
3. The Contractor shall locate existing utilities a minimum of two weeks in advance of construction operations in vicinity of utilities.
4. For all standard details see standards bound in Specifications.
5. Clear all utilities by a minimum of 6", clear all poles by 2'-0" minimum or tunnel as required.
6. The Contractor shall provide a joint in all sewer mains within 2'-0" of exterior manhole walls.
7. All manholes shall be 4'-0" inside diameter.
8. Cost of Dip-Rap to be included in unit price bid for furnishing and laying of Sewer Mains.
9. All horizontal and vertical controls are based on Howard County Datum as extended from W.S.S.C.

| QUANTITIES | |
|------------|----------|
| Item | Quantity |
| 8" Sewer | 1850 LF |



Kenneth A. McLeod

Whiskey Bottom Road Sewer-Part 2
Contract No. 242-S

| NO. | DATE | REVISION |
|-----|----------|---|
| 1 | 04-04-05 | ABANDON EX. 8" SEWER; INSTALL 12" SEWER |

As-built
Stakeout and Diary
in FB# 5338

WHITMAN, REQUARDT & ASSOCIATES
ENGINEERS
1304 ST. PAUL ST.
BALTIMORE, MARYLAND

DEPARTMENT OF PUBLIC WORKS
HOWARD COUNTY, MARYLAND
10-24-72
DATE
W. O. P. Albert
CHIEF - BUREAU OF WATER AND SEWER

CONTRACT NO. 242-S

PLAN OF SEWER MAINS

ELECTION DISTRICT GUILFORD NO. 6

DRAWING NO. 1 OF 2
SCALE 1" = 50'
42 UE 18-1
42 UE 18-3

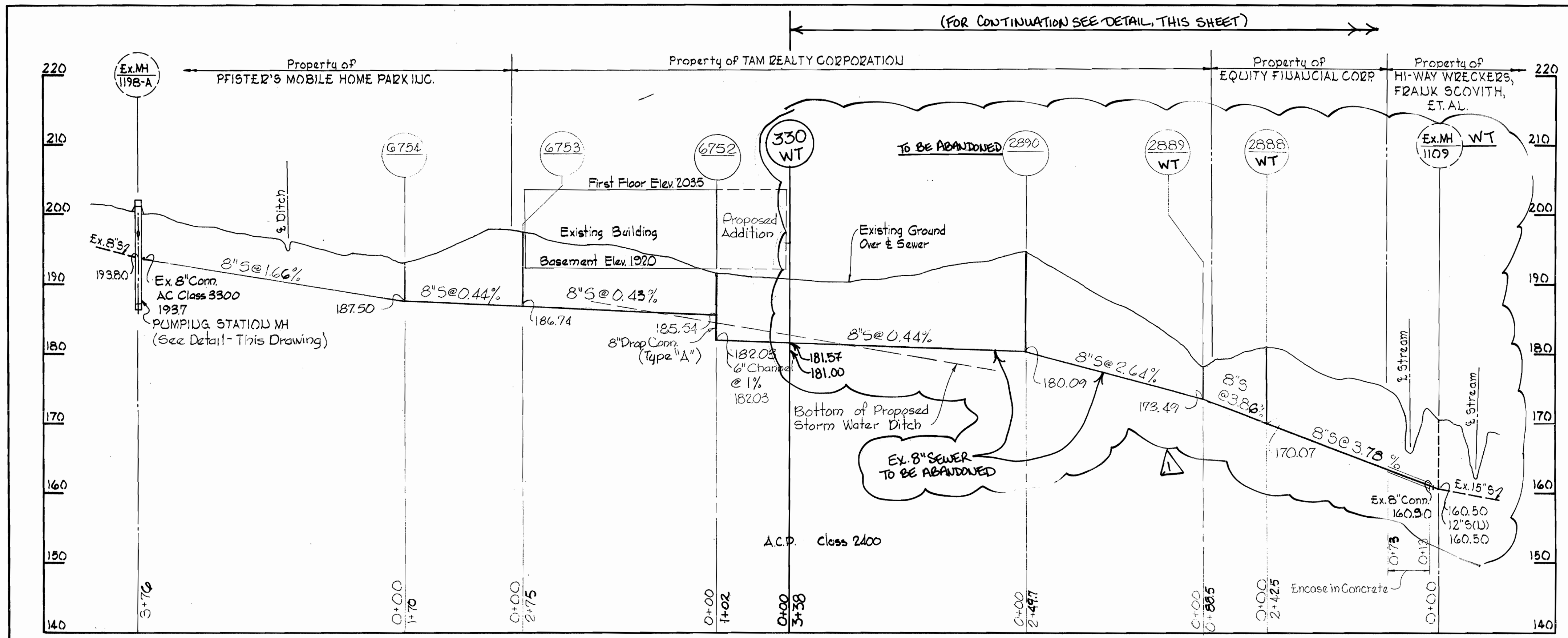
W. O. 6024-2

April 23, 1973
FB# 3355, 5066

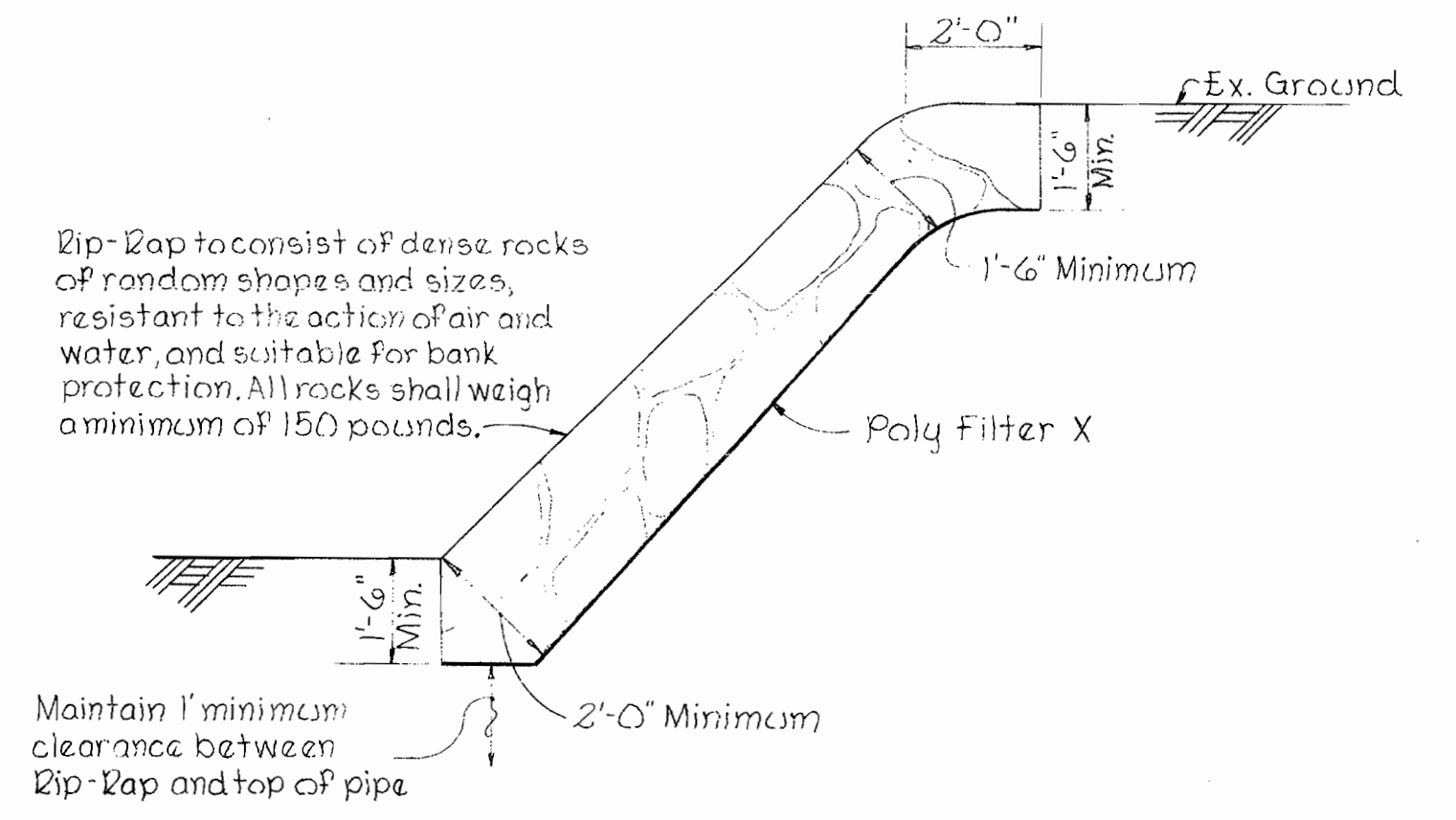
WS 242-S/1

BRUNING 44-510 14775

WS 242-S/2A

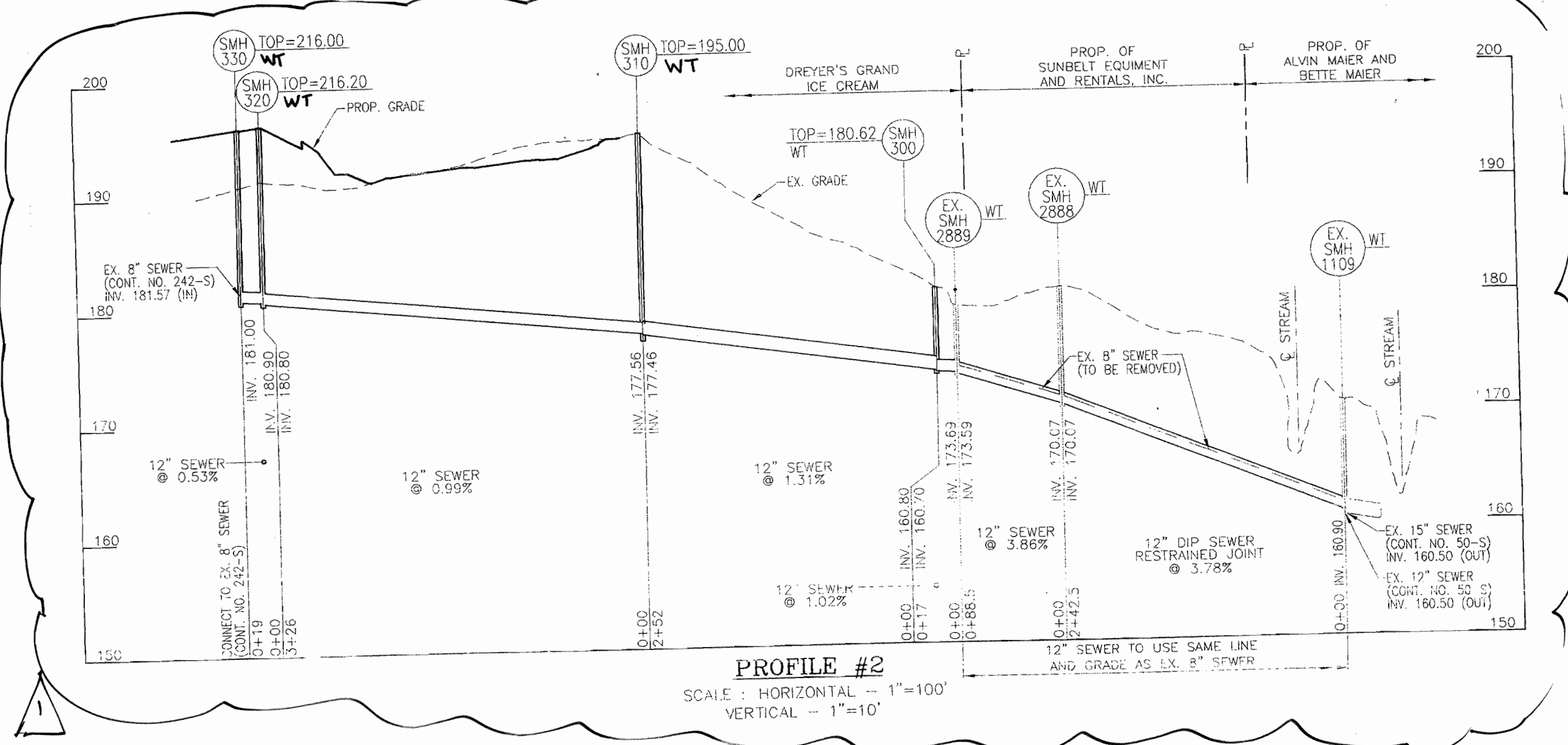


NOTE: Poly Filter X shall be as manufactured by Carthage Mills Inc. Erosion Control Division, 124 W. 66th Street Cincinnati, Ohio or approved equal.

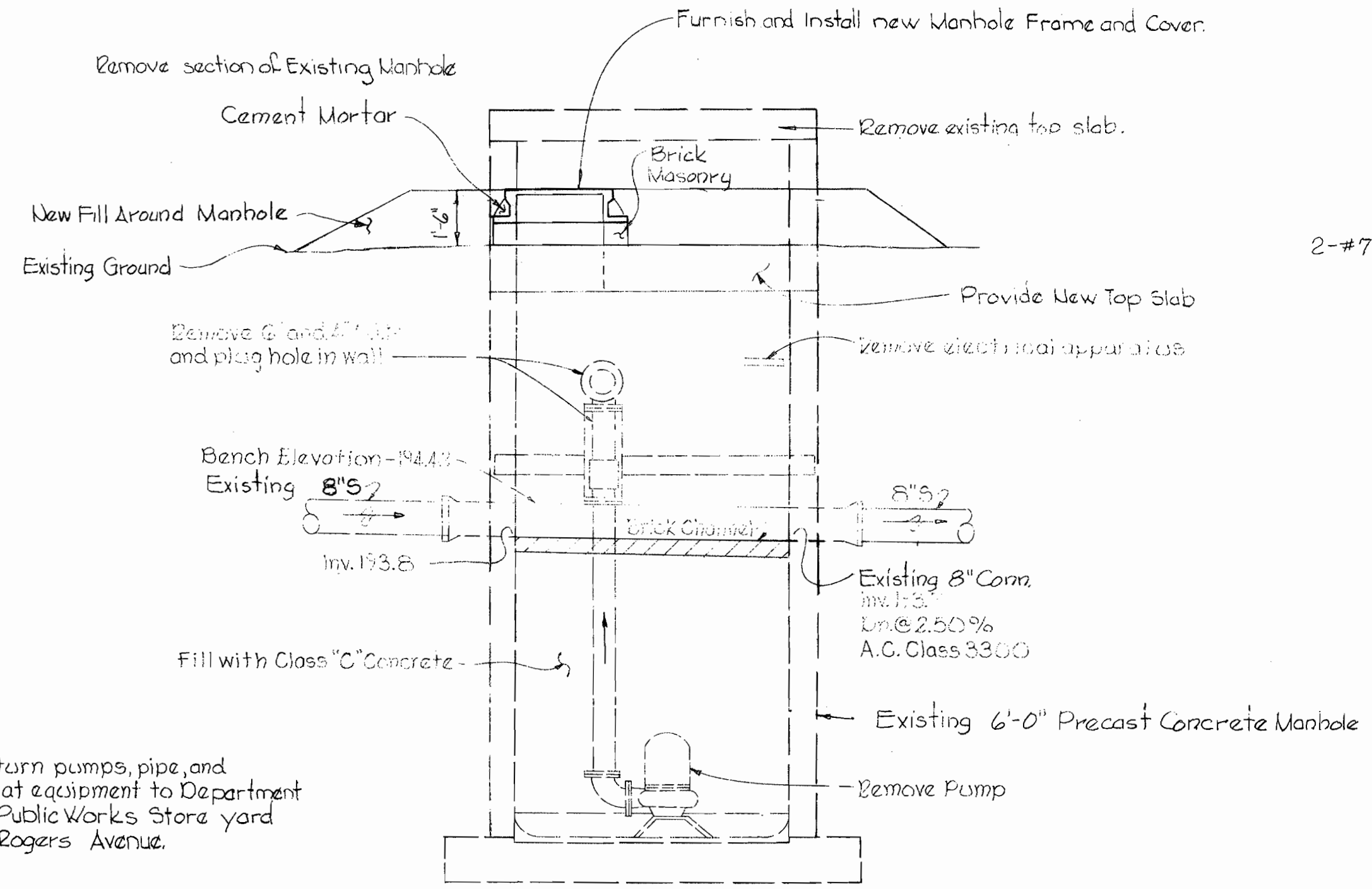


DIP-RAP DETAIL
Scale: 3/8" = 1'-0"

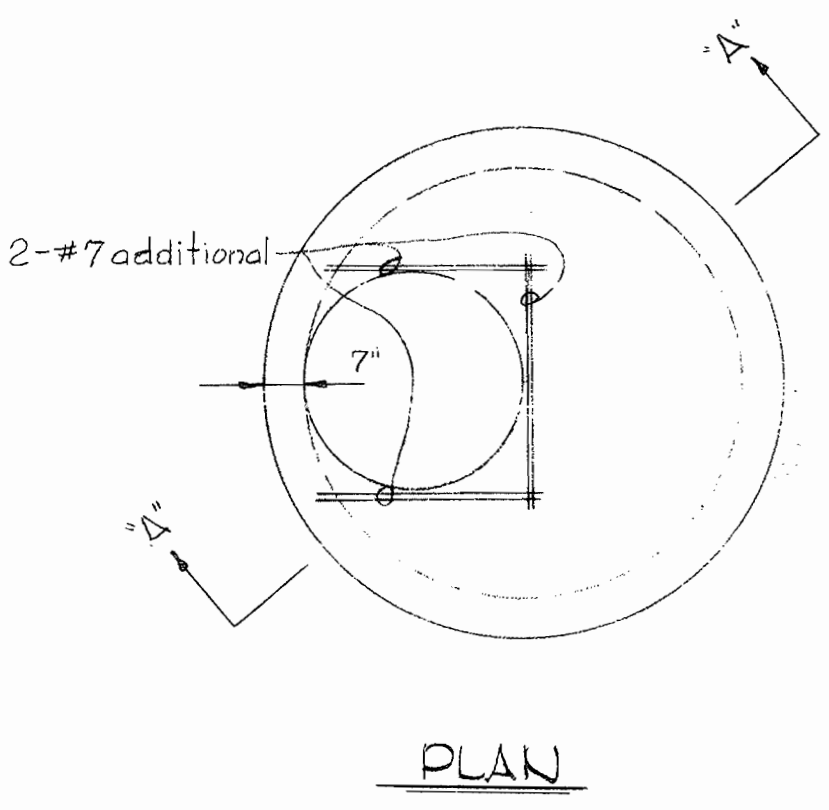
PROFILE
Scale: Horiz. 1" = 100'
Vert. 1" = 10'



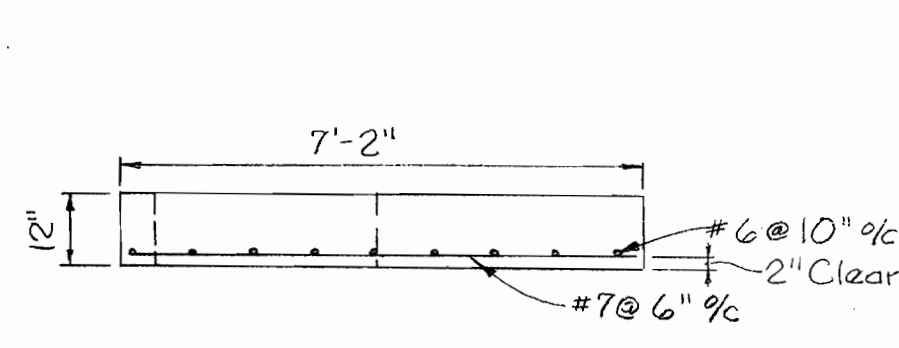
PROFILE #2
SCALE: HORIZONTAL - 1" = 100'
VERTICAL - 1" = 10'



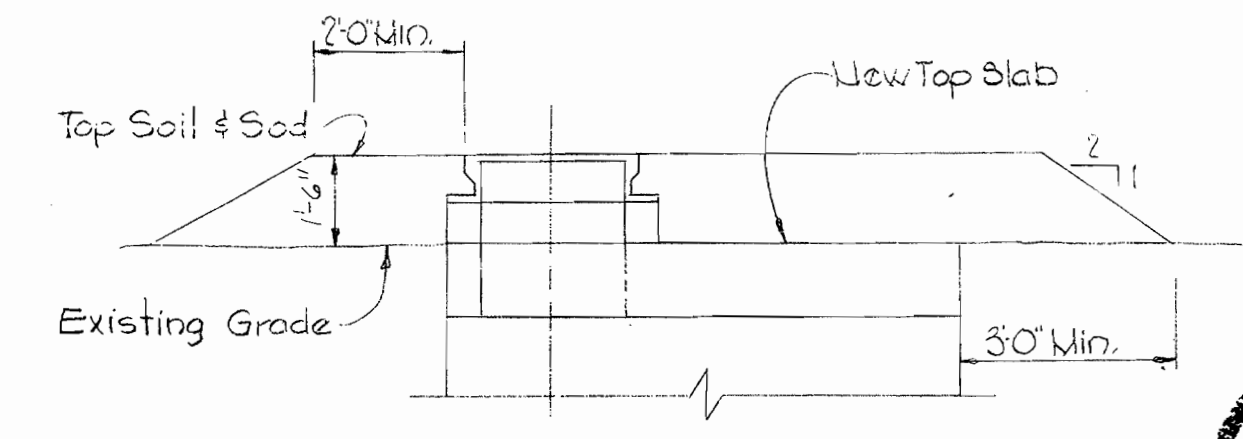
NOTE: Return pumps, pipe, and float equipment to Department of Public Works Store yard at Rogers Avenue.



PLAN



SECTION "A-A"



FILL AT MANHOLE: 1198-A
Scale: 3/8" = 1'-0"

LUMP SUM ITEM NO. 9
EXISTING TEMPORARY PUMPING
STATION - MANHOLE 1198-A
Scale: 3/8" = 1'-0"

DEPARTMENT OF PLANNING & ZONING
HOWARD COUNTY, MARYLAND
CHIEF, DEVELOPMENT ENGINEERING DIVISION
DATE: 6/1/05

NEW TOP SLAB FOR
MANHOLE 1198-A
Scale: 3/8" = 1'-0"



Whiskey Bottom Road Sewer - Part 2
Contract No. 242-5

| NO. | DATE | REVISION |
|-----|----------|---|
| 1 | 04-04-05 | ABANDON EX. 8" SEWER, INSTALL 12" SEWER |

WHITMAN, REQUARDT & ASSOCIATES
ENGINEERS
1304 ST. PAUL ST.
BALTIMORE, MARYLAND

DEPARTMENT OF PUBLIC WORKS
HOWARD COUNTY, MARYLAND
DATE: 5-9-05

CONTRACT NO. 242-S

PROFILE AND DETAILS
OF SEWER MAINS

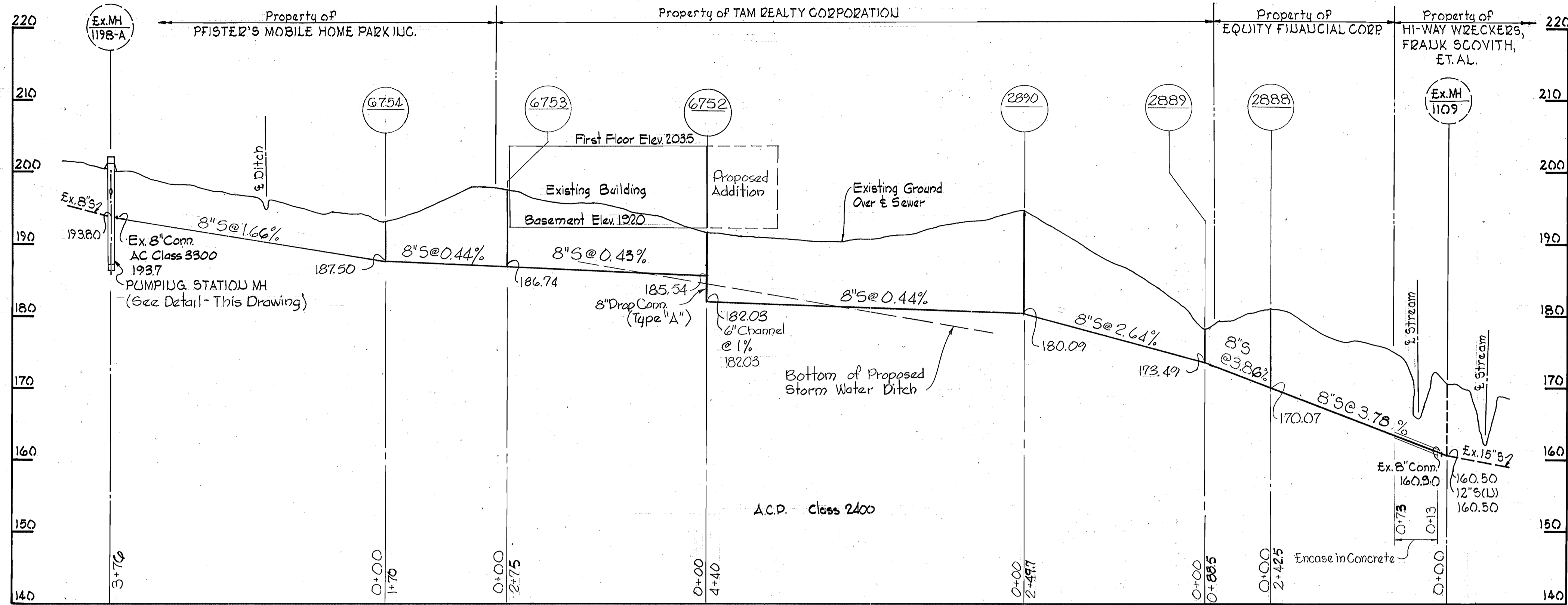
ELECTION DISTRICT
GUILFORD NO. 6

DRAWING NO. 2A
OF 2
SCALE AS SHOWN

W. O. 6024-2

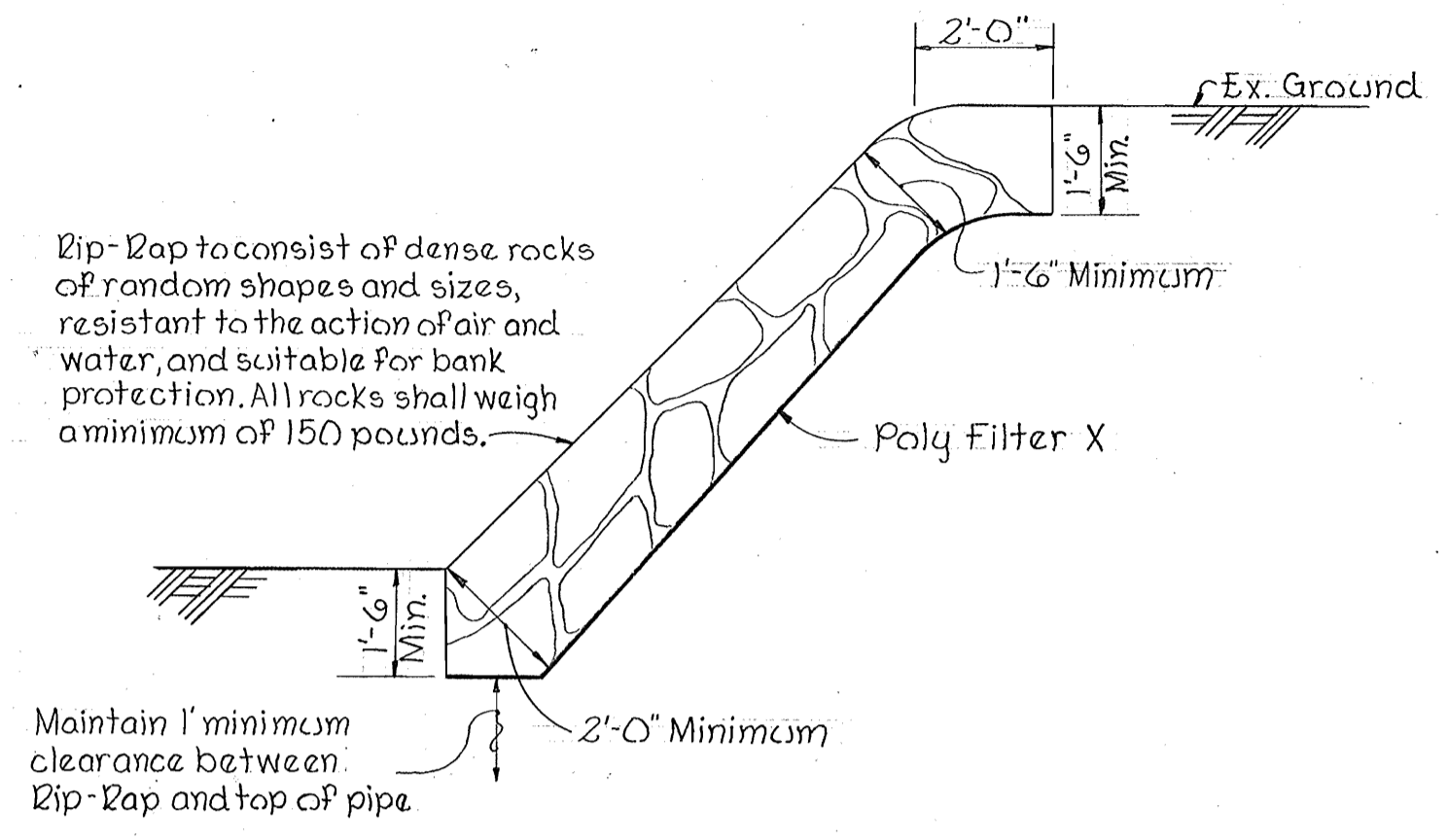
April 23, 1975

AS BUILT

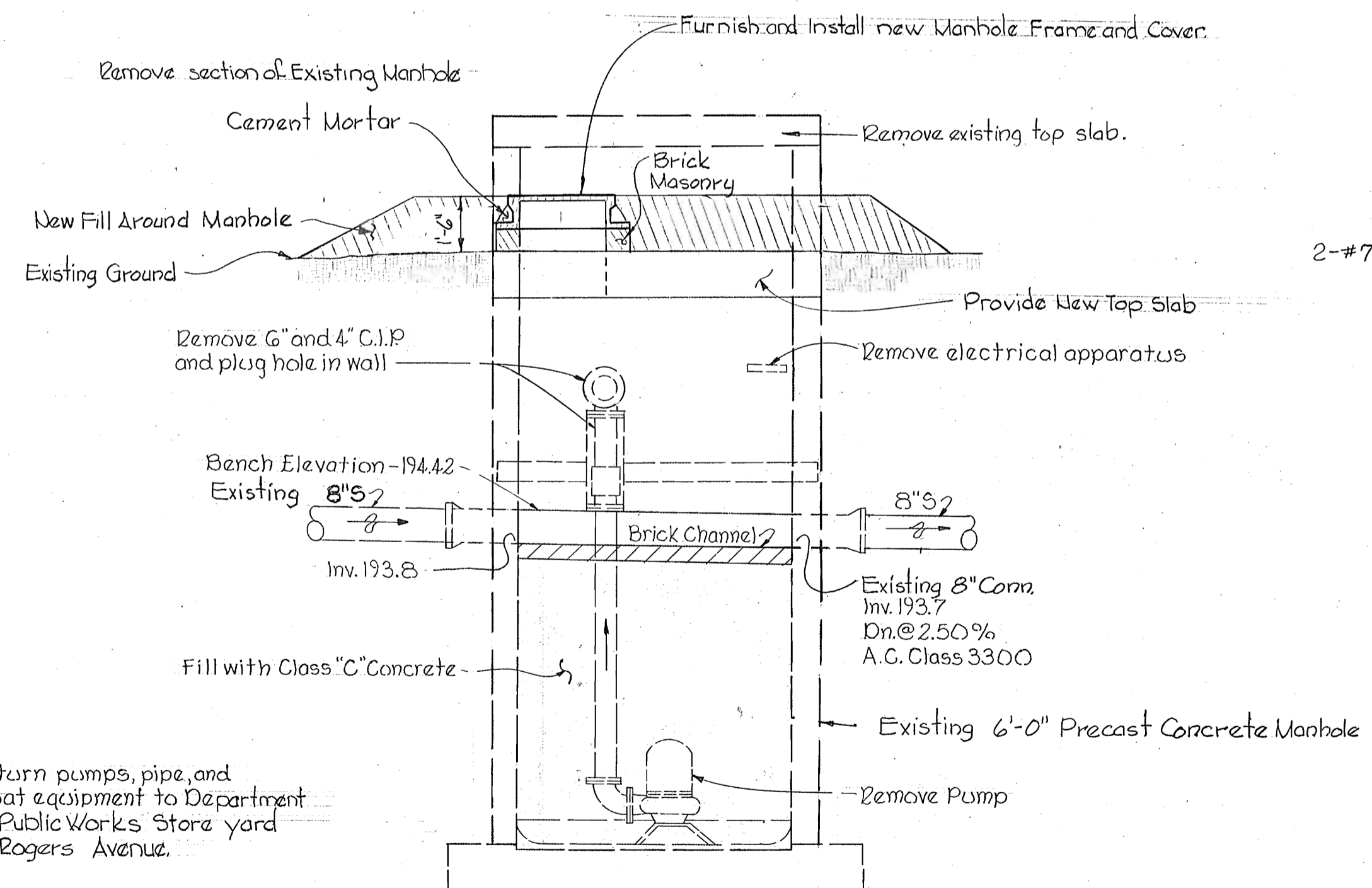


PROFILE
Scale: Horz. 1"=100'
Vert. 1"=10'

NOTE: Poly Filter X shall be as manufactured by Carthage Mills Inc. Erosion Control Division, 124 W. 66th Street Cincinnati, Ohio or approved equal.

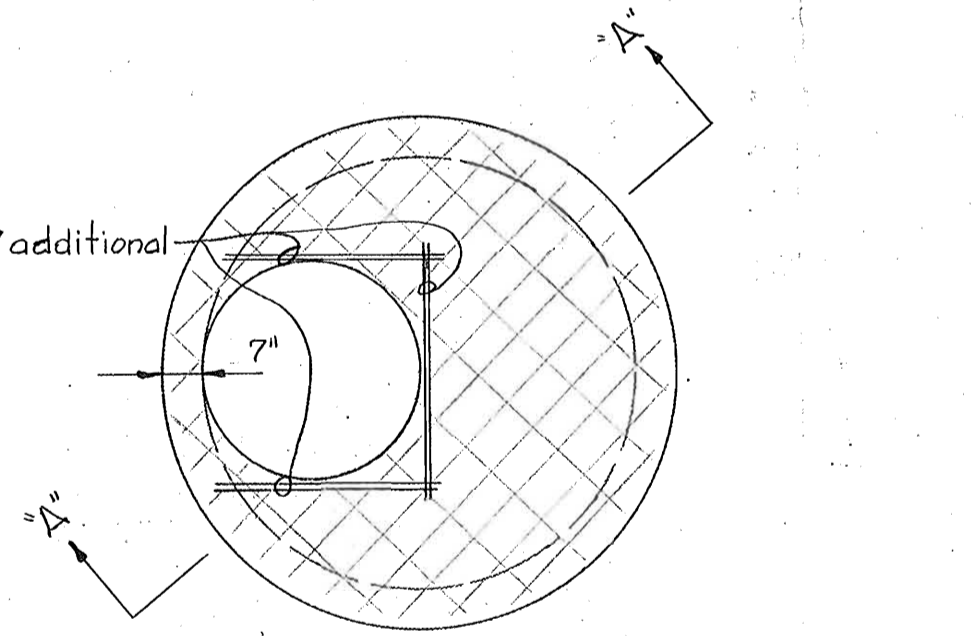


RIp-RAP DETAIL
Scale: 3/8"=1'-0"

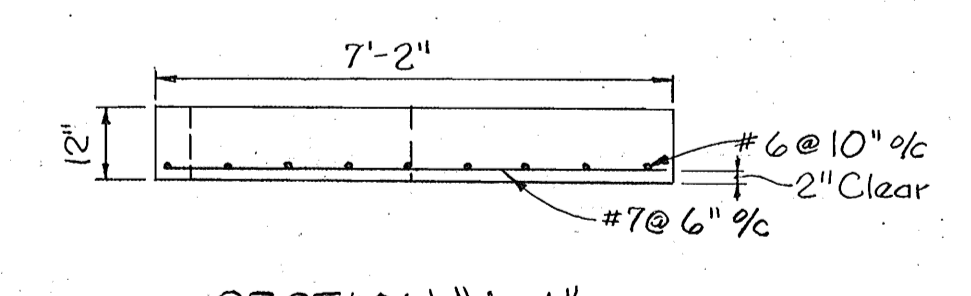


NOTE: Return pumps, pipe, and float equipment to Department of Public Works Store yard at Rogers Avenue.

LUMP SUM ITEM NO. 9
EXISTING TEMPORARY PUMPING
STATION - MANHOLE 1198-A
Scale: 3/8"=1'-0"

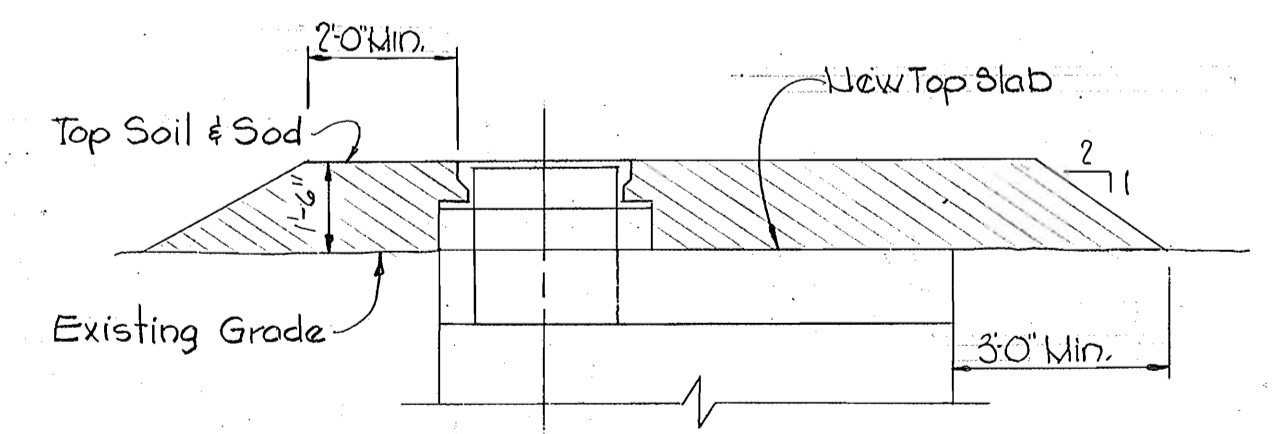


PLAN

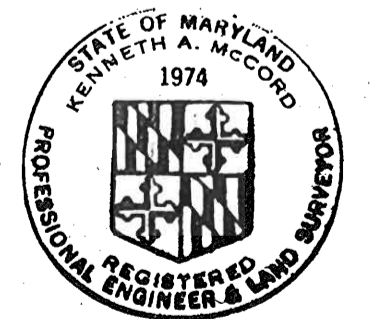


SECTION "A-A"

NEW TOP SLAB FOR
MANHOLE 1198-A
Scale: 3/8"=1'-0"



FILL AT MANHOLE 1198-A
Scale: 3/8"=1'-0"



Kenneth A. McLeod

Whiskey Bottom Road Sewer - Part 2
Contract No. 242-S

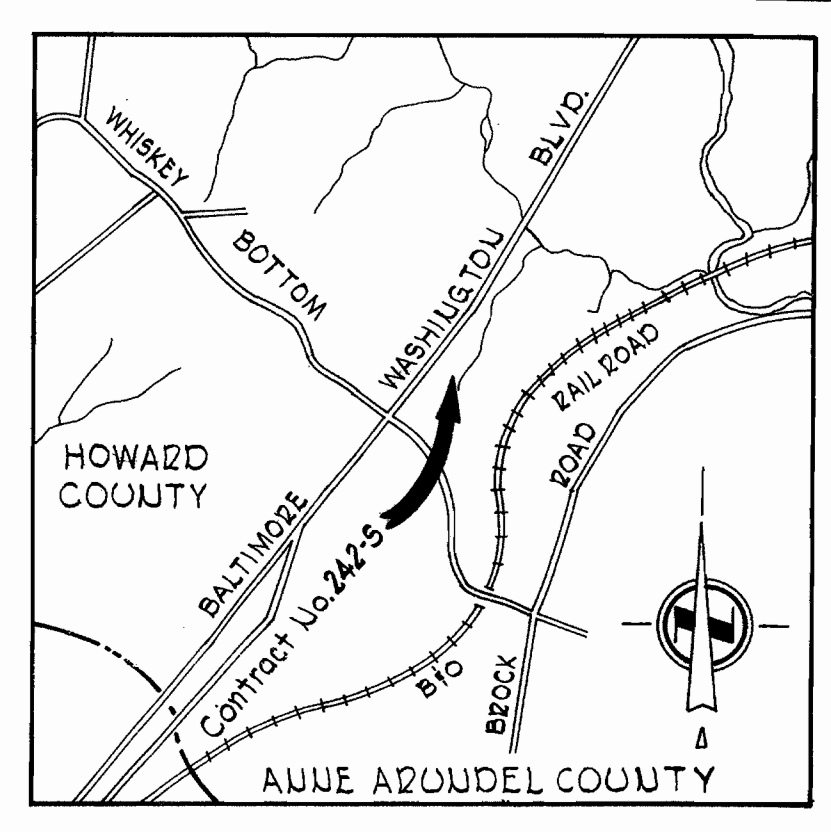
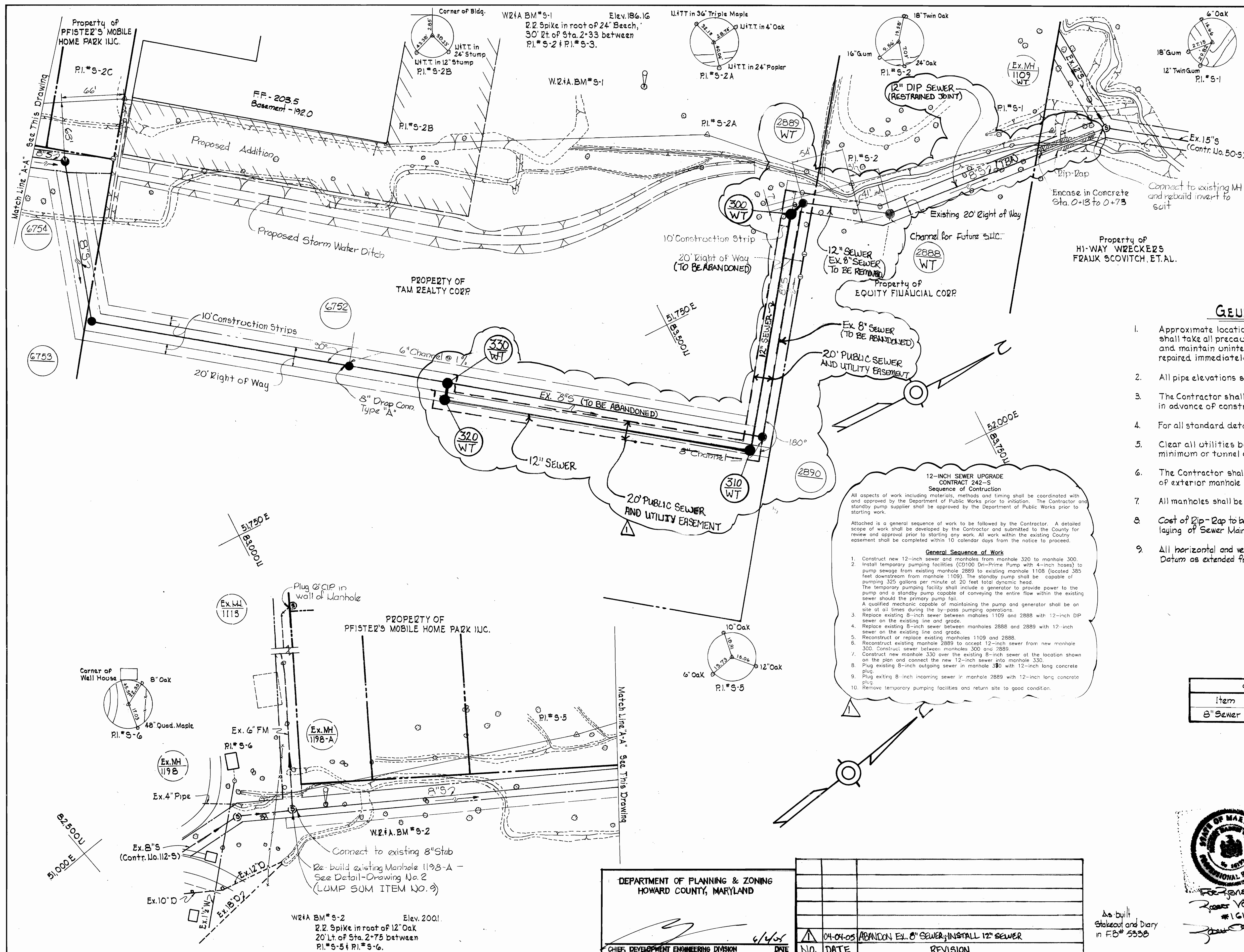
| | | | | | |
|---|--|--------------------|---------------------------------------|-------------------------------------|--|
| WHITMAN, REQUARDT & ASSOCIATES ENGINEERS 1304 ST. PAUL ST. BALTIMORE, MARYLAND | DEPARTMENT OF PUBLIC WORKS HOWARD COUNTY, MARYLAND 10-24-72 DATE <i>W. O. Falwell</i> CHIEF - BUREAU OF WATER AND SEWER | CONTRACT NO. 242-S | PROFILE AND DETAILS OF SEWER MAINS | ELECTION DISTRICT GUILFORD NO. 6 | DRAWING NO. 2 OF 2 SCALE AS SHOWN |
|---|--|--------------------|---------------------------------------|-------------------------------------|--|

W. O. 6024-2

April 23, 1973
AS BUILT

242-S/2

BRUNING 4451C 14776



GENERAL NOTES

1. Approximate location of existing mains are shown. The Contractor shall take all precautions to protect existing mains and services and maintain uninterrupted supply. Any damage incurred shall be repaired immediately.
2. All pipe elevations shown are invert elevations.
3. The Contractor shall locate existing utilities a minimum of two weeks in advance of construction operations in vicinity of utilities.
4. For all standard details see standards bound in Specifications.
5. Clear all utilities by a minimum of 6", clear all poles by 2'-0" minimum or tunnel as required.
6. The Contractor shall provide a joint in all sewer mains within 2'-0" of exterior manhole walls.
7. All manholes shall be 4'-0" inside diameter.
8. Cost of Dip-Rap to be included in unit price bid for furnishing and laying of Sewer Mains.
9. All horizontal and vertical controls are based on Howard County Datum as extended from W.S.S.C.

12-INCH SEWER UPGRADE
 CONTRACT 242-S
 Sequence of Construction

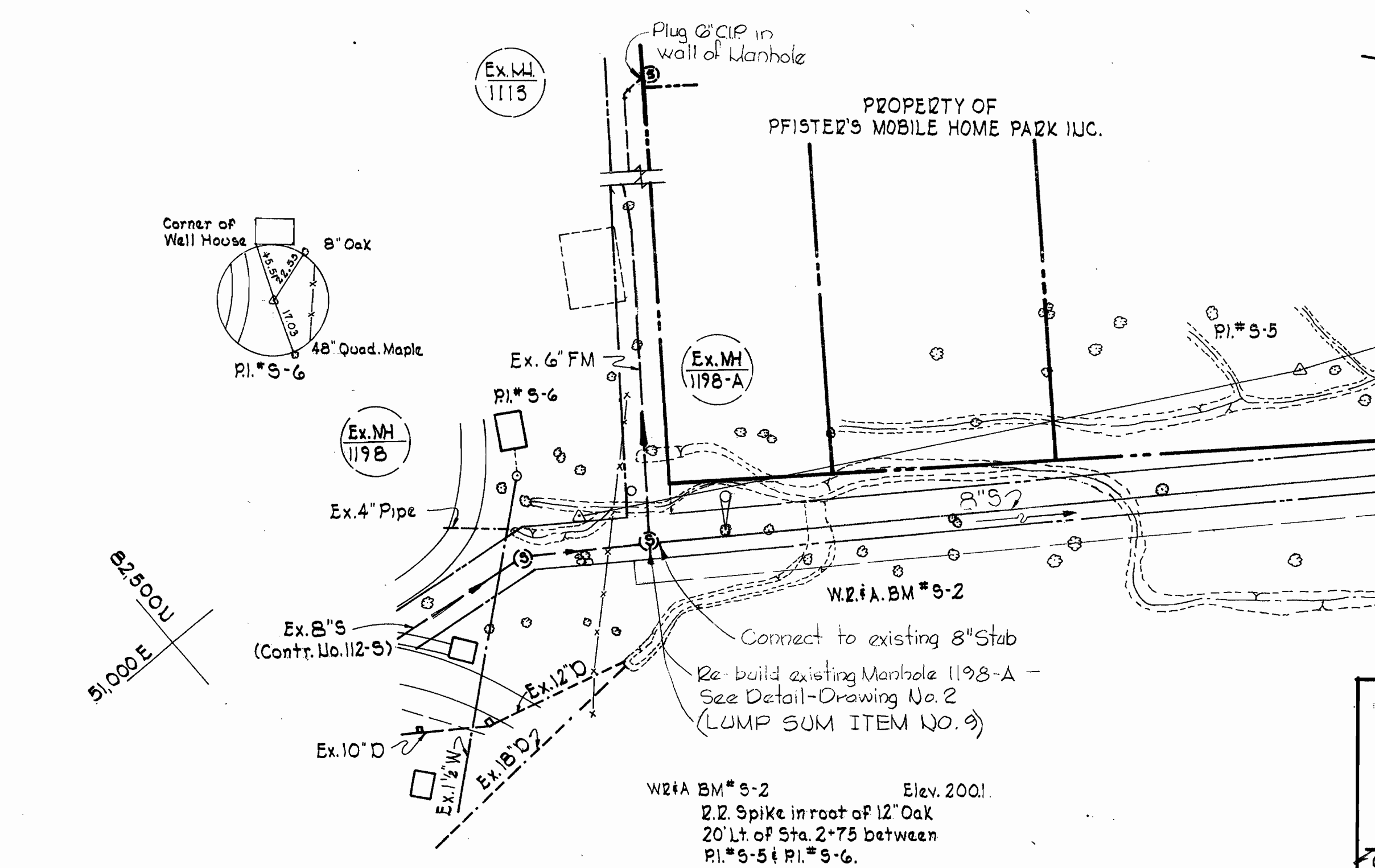
All aspects of work including materials, methods and timing shall be coordinated with and approved by the Department of Public Works prior to initiation. The Contractor and standby pump supplier shall be approved by the Department of Public Works prior to starting work.

Attached is a general sequence of work to be followed by the Contractor. A detailed scope of work shall be developed by the Contractor and submitted to the County for review and approval prior to starting any work. All work within the existing County easement shall be completed within 10 calendar days from the notice to proceed.

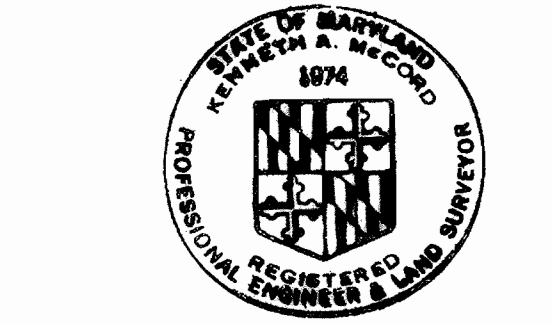
General Sequence of Work

1. Construct new 12-inch sewer and manholes from manhole 320 to manhole 300.
2. Install temporary pumping facilities (D100 Dn-Prime Pump with 4-inch hoses) to pump sewage from existing manhole 2889 to existing manhole 1108 (located 385 feet downstream from manhole 1109). The standby pump shall be capable of pumping 325 gallons per minute at 20 feet total dynamic head. The temporary pumping facility shall include a generator to provide power to the pump and a standby pump capable of conveying the entire flow within the existing sewer should the primary pump fail. A qualified mechanic capable of maintaining the pump and generator shall be on site at all times during the by-pass pumping operations.
3. Replace existing 8-inch sewer between manholes 1109 and 2888 with 12-inch DIP sewer on the existing line and grade.
4. Replace existing 8-inch sewer between manholes 2888 and 2889 with 12-inch sewer on the existing line and grade.
5. Reconstruct or replace existing manholes 1109 and 2888.
6. Reconstruct existing manhole 2889 to connect 12-inch sewer from new manhole 300. Construct sewer between manholes 300 and 2889.
7. Construct new manhole 330 over the existing 8-inch sewer at the location shown on the plan and connect the new 12-inch sewer into manhole 330.
8. Plug existing 8-inch outgoing sewer in manhole 330 with 12-inch long concrete plug.
9. Plug existing 8-inch incoming sewer in manhole 2889 with 12-inch long concrete plug.
10. Remove temporary pumping facilities and return site to good condition.

| QUANTITIES | |
|------------|----------|
| Item | Quantity |
| 8" Sewer | 1850 LF |



| | | | |
|--|----------|---|--|
| DEPARTMENT OF PLANNING & ZONING HOWARD COUNTY, MARYLAND | | 6/4/05 | |
| CHIEF, DEVELOPMENT ENGINEERING DIVISION | | DNE | |
| N.O. | DATE | REVISION | |
| 1 | 04-04-05 | ABANDON EX. 8" SEWER; INSTALL 12" SEWER | |



As built Stakeout and Diary in FB# 5338

Whiskey Bottom Road Sewer-Part 2
 Contract No 242-S

WHITMAN, REQUARDT & ASSOCIATES
 ENGINEERS
 1304 ST. PAUL ST.
 BALTIMORE, MARYLAND

DEPARTMENT OF PUBLIC WORKS
 HOWARD COUNTY, MARYLAND
 DATE: 5-9-05
 CHIEF - BUREAU OF UTILITIES

CONTRACT NO. 242-S

PLAN OF SEWER MAINS

ELECTION DISTRICT GUILFORD NO. 6

DRAWING NO. 1A OF 2
SCALE 1"=50'

WS 242-S/1A