

VICINITY MAP
Scale: 1"=1200'

Note:
Remove Existing Plug and Bolthead and Connect to Existing 12" Water.

Note:
Time of Connection to Exist. 12" Water shall be as Directed by the Engineer.

Y-Dt Marked by Board Sticking Above Ground, Sta. 4+22.

Match Line "D-D" See Drawing No. 2

Match Line "B-B" See This Drawing

Match Line "A-A" See This Drawing

Match Line "A-A" See This Drawing

Match Line "B-B" See This Drawing

Match Line "C-C" See This Drawing

WHITMAN, REQUARDT & ASSOCIATES
ENGINEERS
1304 ST. PAUL ST.
BALTIMORE, MARYLAND

HOWARD COUNTY METROPOLITAN COMMISSION
4-3-68
DATE
W. O. G. 24-2
CHIEF ENGINEER

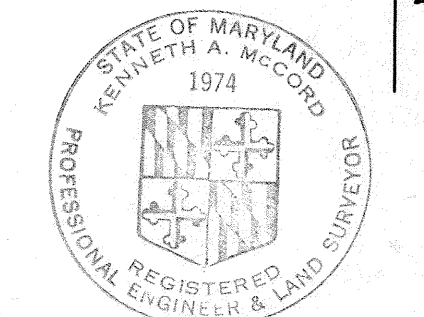
CONTRACT NO. 234 WBS

PLAN OF
WATER & SEWER MAINS

ELECTION DISTRICT
GUILFORD NO. 6

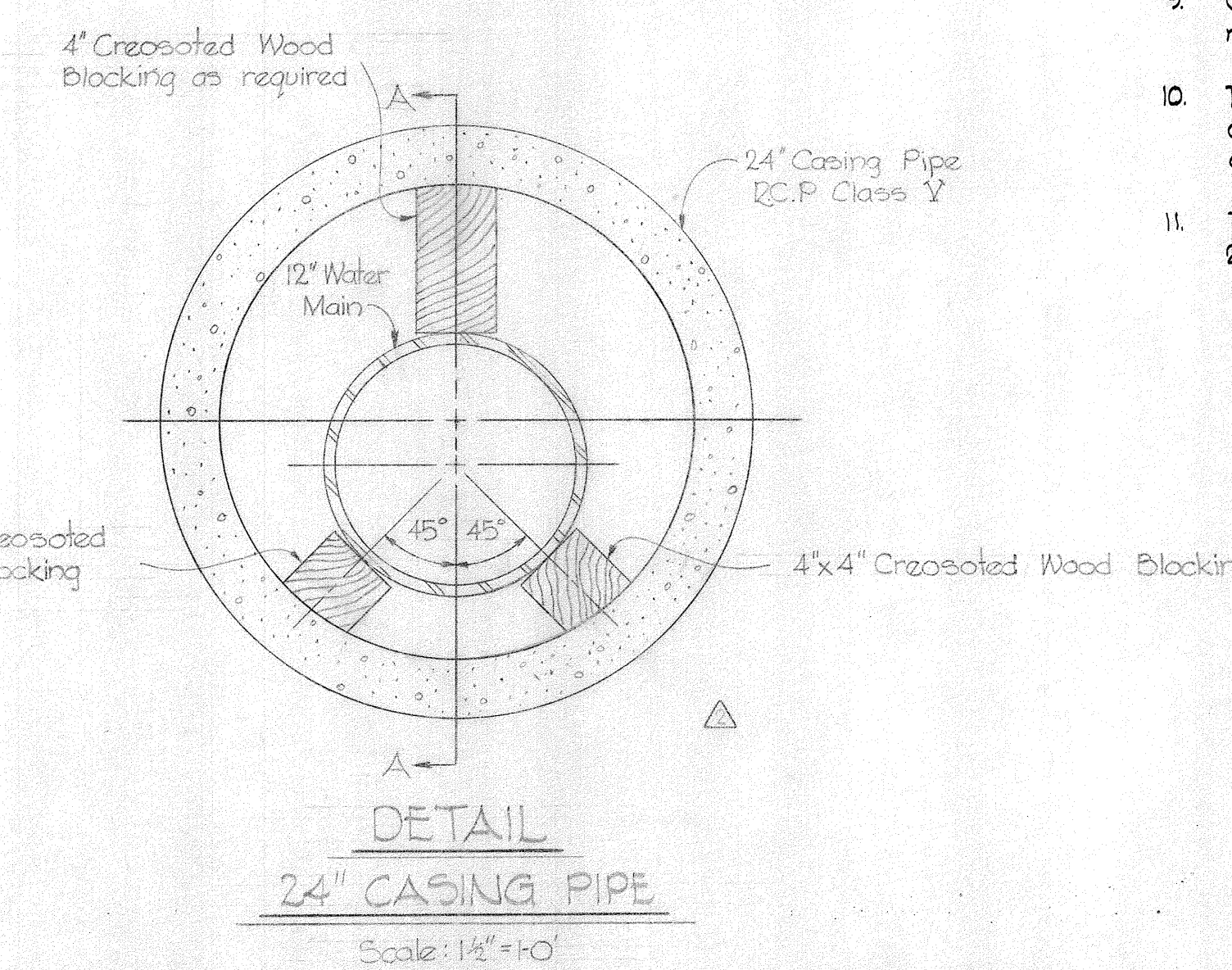
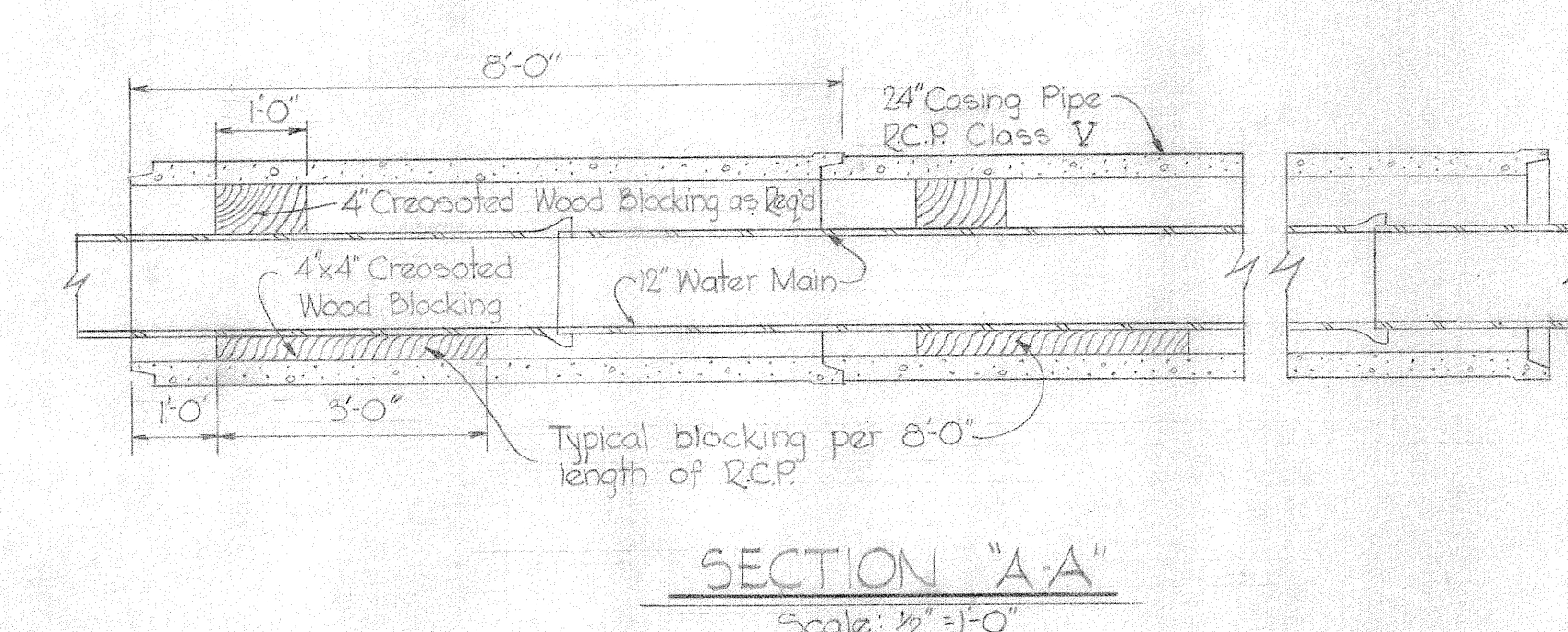
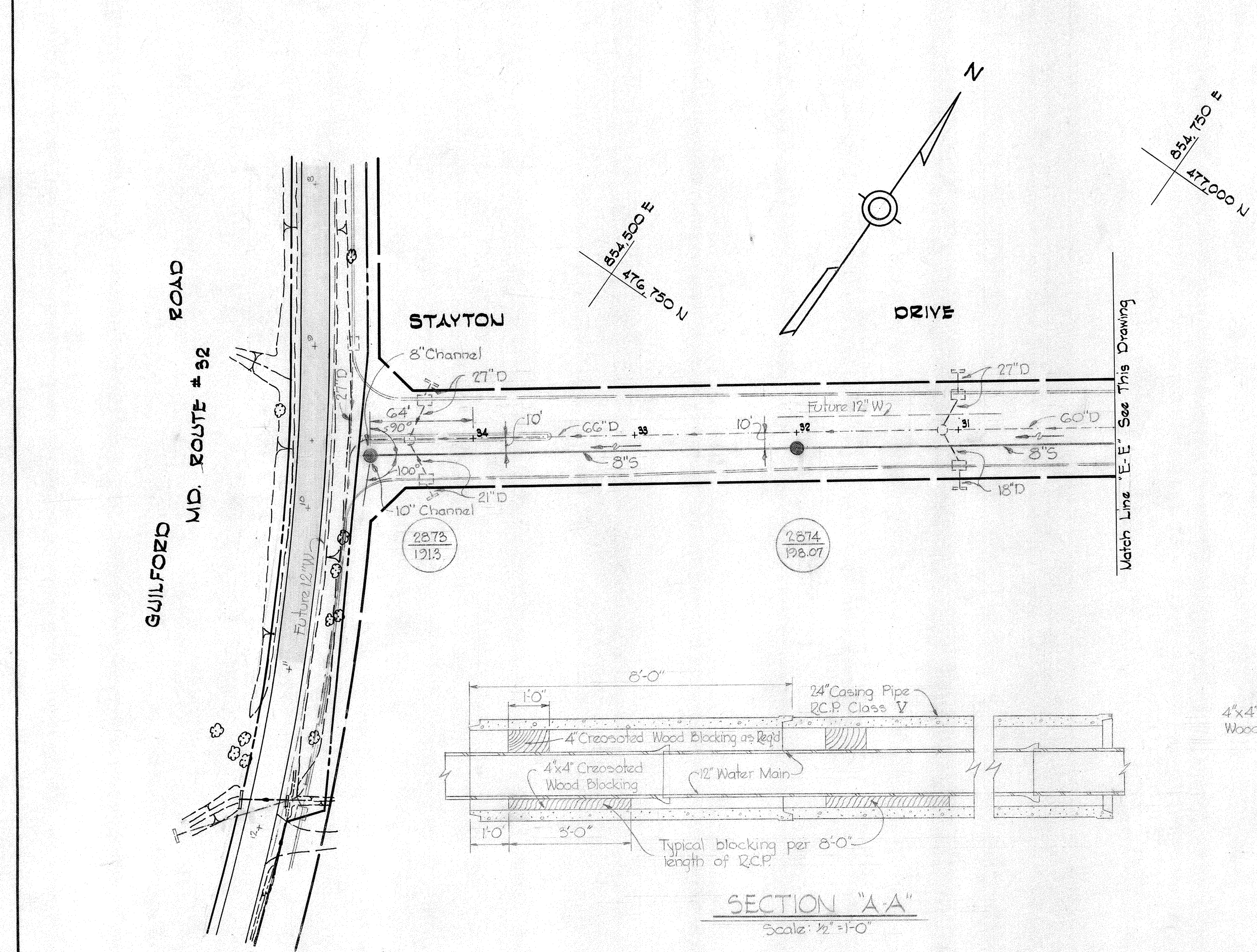
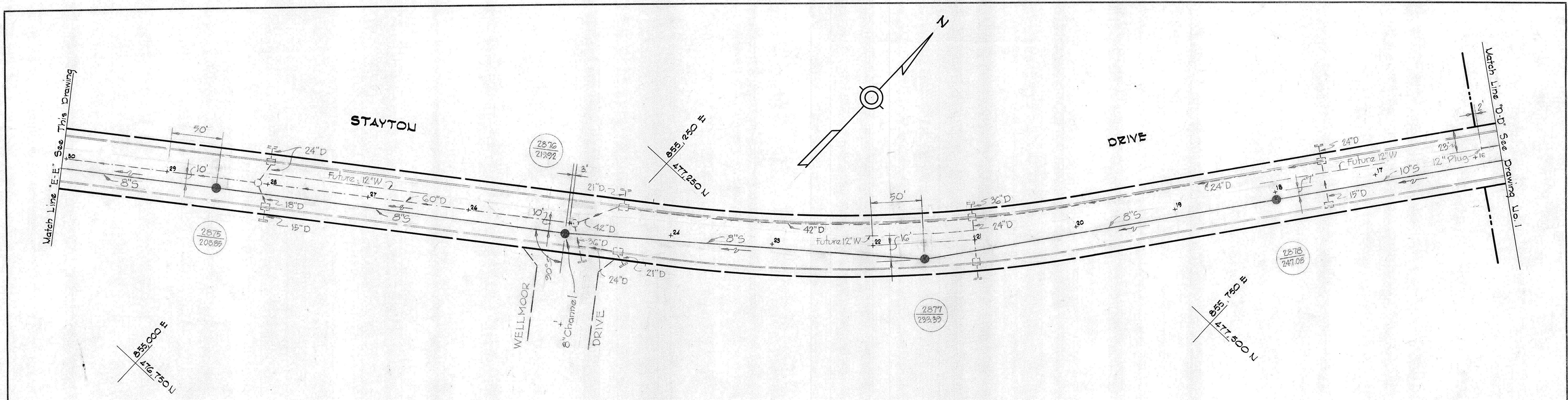
DRAWING NO. 1 OF 3
SCALE 1"=50'

7-25-68	Extended 8" Sewer in Roxmoor Drive.
6-13-68	Revised Water & Sewer at Railroad Crossing Stayton Drive
5-8-68	Revised water in Stayton Drive from 8" W to 12" W
11/2/21	Revision



Baltimore and Washington Industrial Park
Contract N° 234 WBS

8" x 10" A.C.P. USED



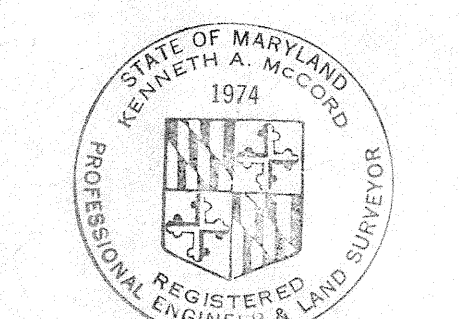
GENERAL NOTES

1. Approximate locations of existing mains are shown. The Contractor shall take all necessary precautions to protect existing mains and services and maintain uninterrupted supply. Any damage incurred shall be repaired immediately.
2. All pipe elevations shown are invert elevations.
3. The Contractor shall locate existing utilities a minimum of two weeks in advance of construction operations in vicinity of utilities.
4. For all standard details see standards bound in Specifications.
5. All water mains to be C.I.P. or D.I.P. and have a minimum of 3/2' cover.
6. Block all fittings with concrete, see standards bound in Specifications.
7. Bury line elevations on fire hydrants shall be set to the elevations shown on drawings.
8. All Fire Hydrants shall be buttressed with concrete in accordance with standard Detail W-4.
9. Clear all utilities by a minimum of 6', clear all poles by 2'-0" minimum or tunnel as required.
10. The Contractor shall notify the Telephone Company prior to any construction activities in the vicinity of the telephone cables by calling collect at 685-0400 in Baltimore, Maryland.
11. The Contractor shall provide a joint in all sewer mains within 2'-0" of exterior manhole walls.

BENCH MARKS

W.R. & A. B.M. #8 Elev. 278.14
R.R. Spike in power pole # 334744, 180'
south from Roxmoor Drive on Washington Blvd.

W.R. & A. B.M. #8-A Elev. 263.11
80 Pennie Nail in 86" Oak, 345' west from
Stayton Drive on Roxmoor Drive.

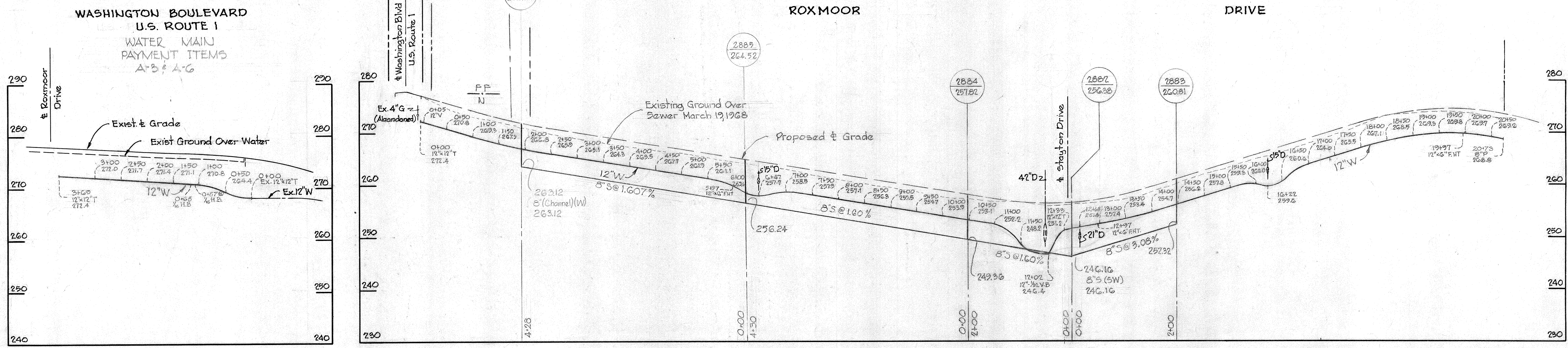


Kenneth A. McLeod
Baltimore and Washington Industrial Park
Contract N° 234 W&S

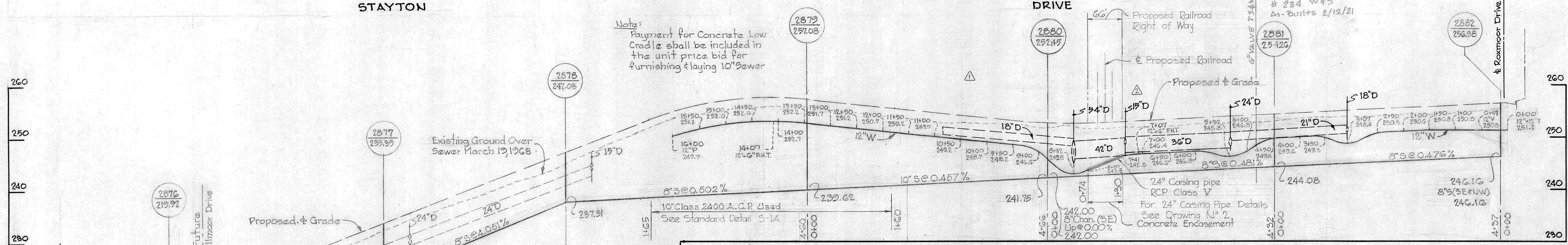
△ 6-13-68	Added Casing Pipe Details
△ 5-8-68	Revised water in Stayton Drive from 8" W to 12" W
N°	Date: Revision

WHITMAN, REQUARDT & ASSOCIATES ENGINEERS 1304 ST. PAUL ST. BALTIMORE, MARYLAND	HOWARD COUNTY METROPOLITAN COMMISSION 4-3-68 <i>ed o Palat</i> DATE CHIEF ENGINEER	CONTRACT NO. 234 W&S	PLAN OF WATER & SEWER MAINS	ELECTION DISTRICT GUILFORD NO. 6	DRAWING NO. 2 OF 3	SCALE 1" = 50'
---	--	----------------------	--------------------------------	-------------------------------------	--------------------------	-------------------

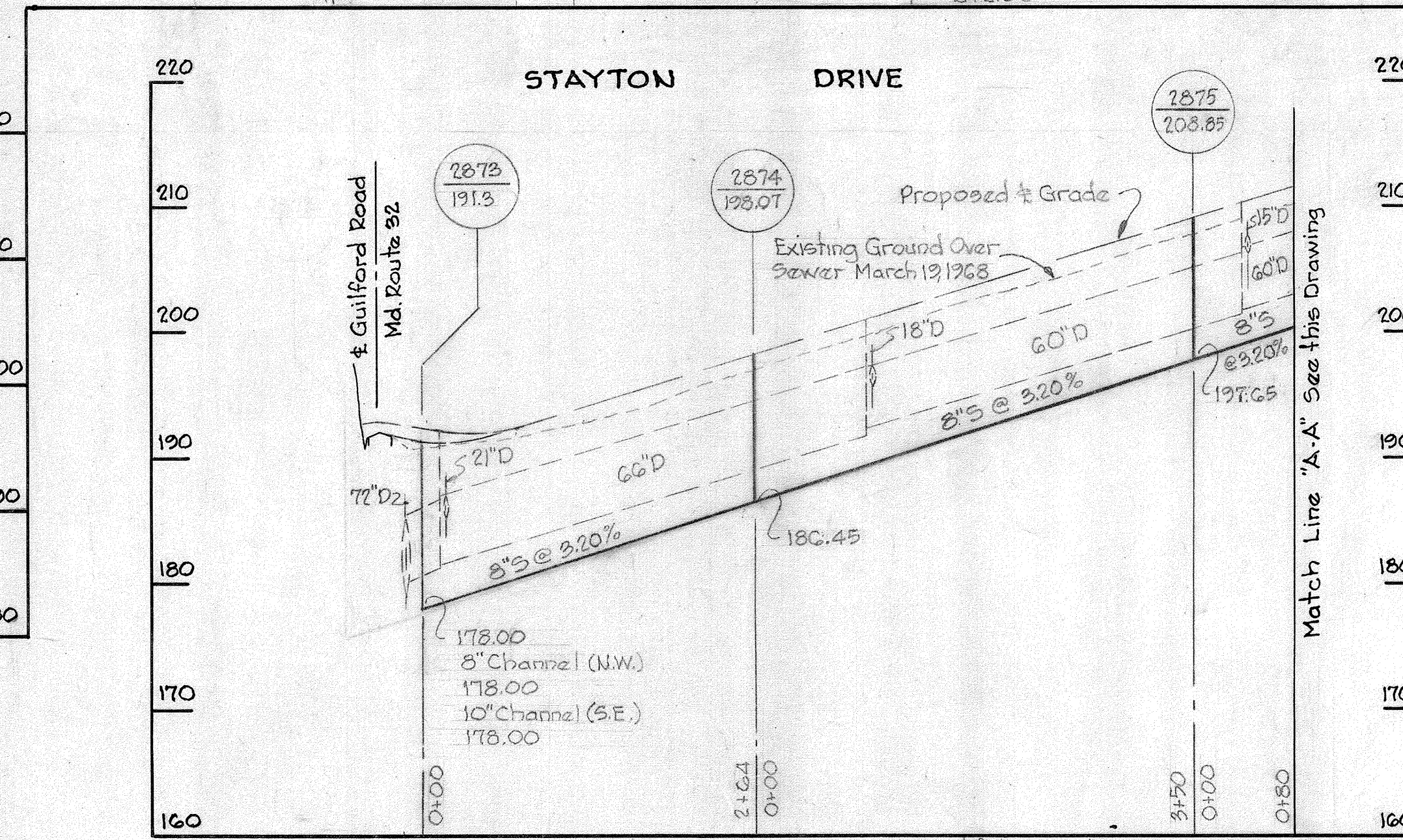
WATER MAIN PAYMENT ITEMS A-3 & A-6



WATER MAIN PAYMENT ITEMS A-2 & A-5

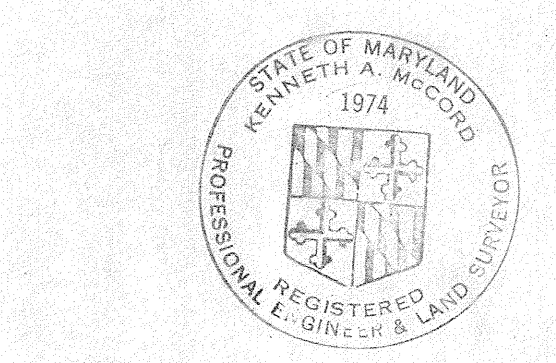


Note:
Payment for Concrete Low
Cradle shall be included in
the unit price bid for
furnishing & laying 10" sewer



8" x 10" A.C.P. USED

- 7-27-68 Extended Sewer Main in Roxmoor Drive
- 6-13-68 Revised Water & Sewer at Railroad Crossing Stayton Drive
- 5-8-68 Revised Stayton Drive Water Profile from 6" W to 12" W



Kenneth M. Lind

Baltimore and Washington Industrial Park
Contract No. 234 W45

WHITMAN, REQUARDT & ASSOCIATES ENGINEERS 1304 ST. PAUL ST. BALTIMORE, MARYLAND	HOWARD COUNTY METROPOLITAN COMMISSION 4-3-68 <i>W. O. G. 24-2</i> DATE CHIEF ENGINEER	CONTRACT NO. 234 W&S	PROFILES OF WATER & SEWER MAINS	ELECTION DISTRICT GUILFORD NO. 6	DRAWING NO. 3 OF 3 SCALE H:1"=100' V:1"=10'
---	---	----------------------	------------------------------------	-------------------------------------	---