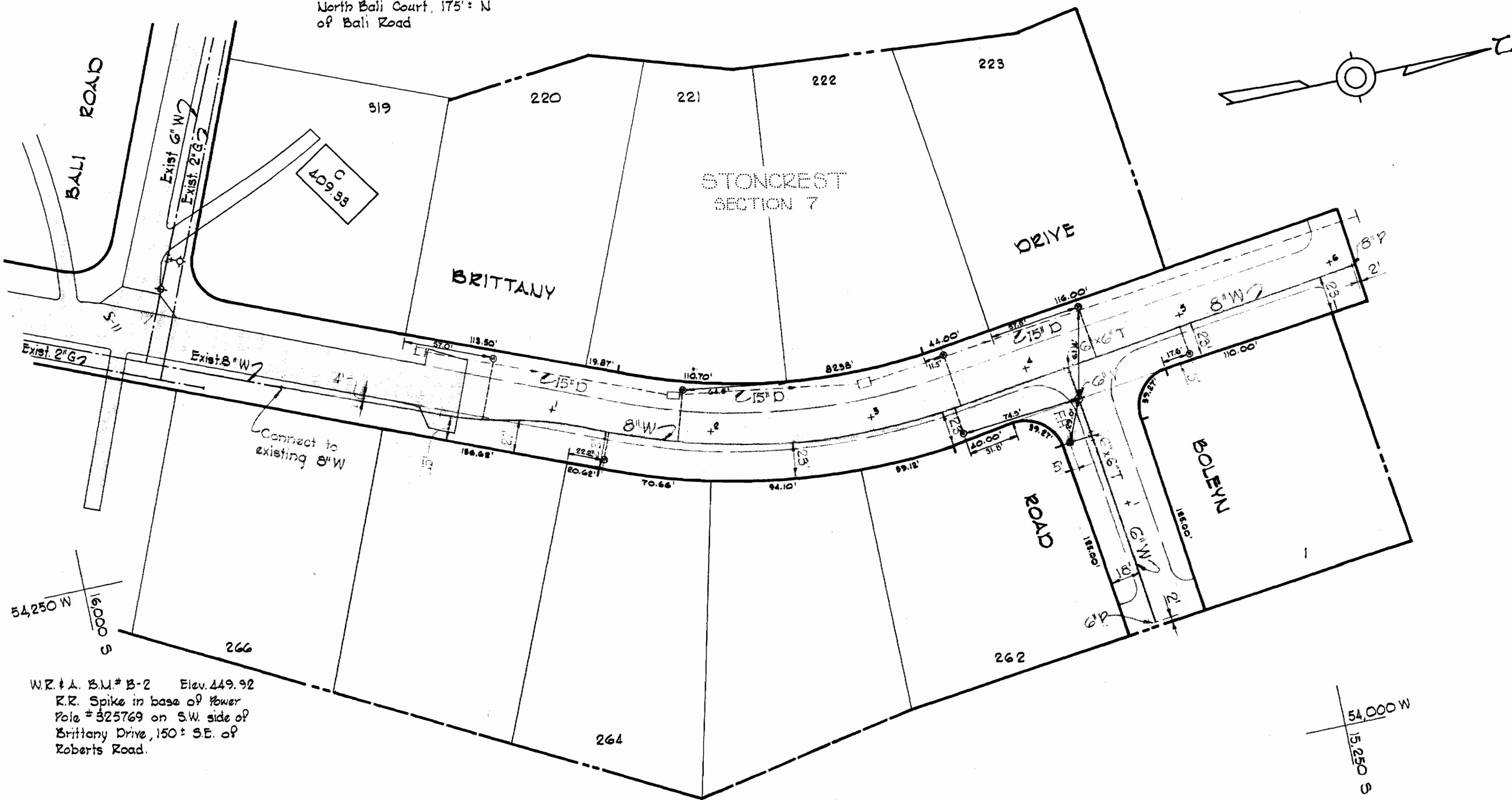
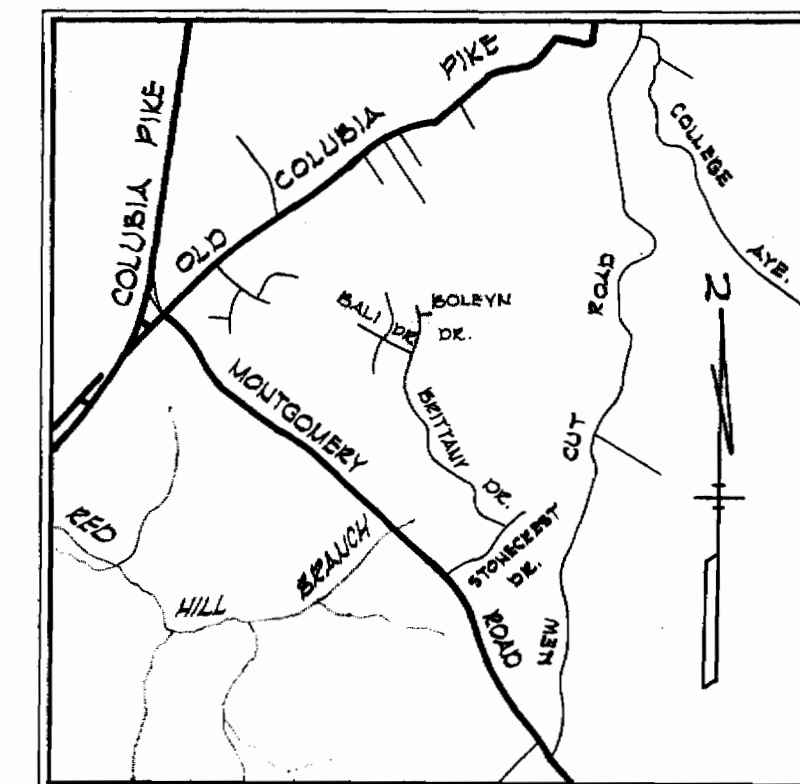


W.P. & A. B.M. # B-5 Elev. 408.46
 R.R. Spike in base of Power Pole # 545570 on W. of North Bali Court, 175' N of Bali Road



W.P. & A. B.M. # B-2 Elev. 449.92
 R.R. Spike in base of Power Pole # 325769 on S.W. side of Brittany Drive, 150' S.E. of Roberts Road.

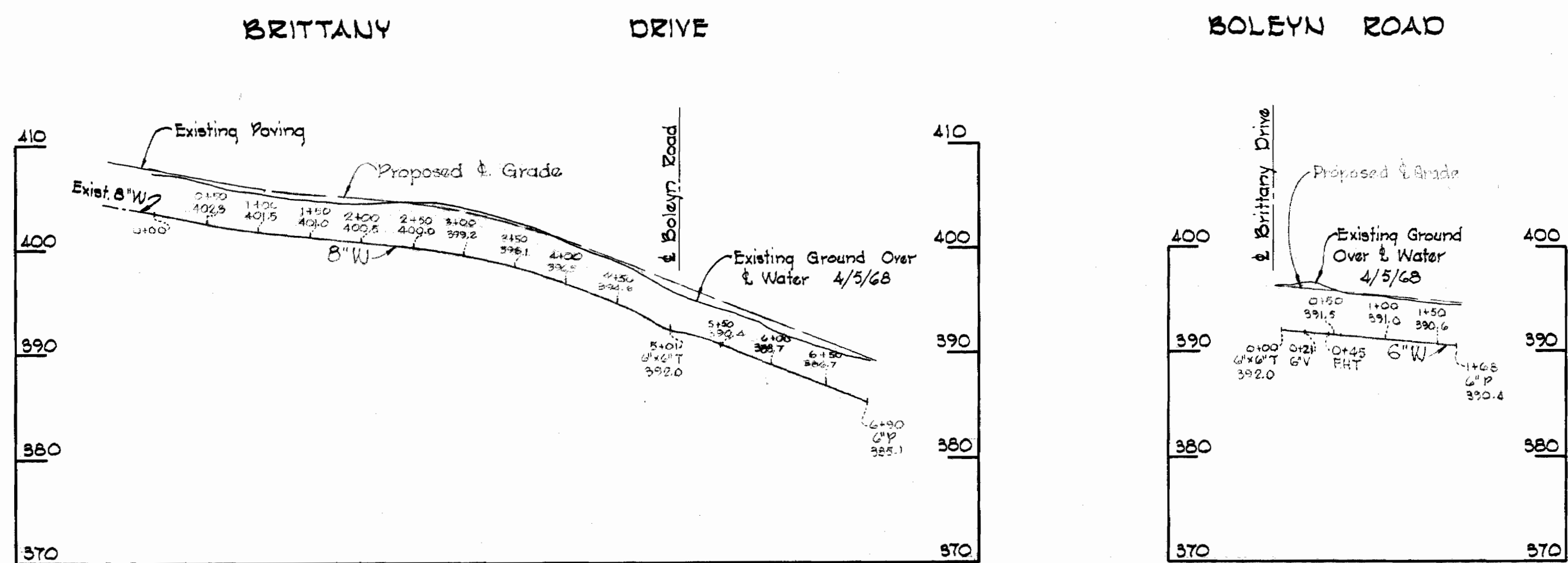
PLAN
 Scale: 1" = 50'



VICINITY MAP
 Scale: 1" = 1/2 mile

GENERAL NOTES

1. Approximate location of existing mains are shown. The Contractor shall take all necessary precautions to protect existing mains and services and maintain uninterrupted supply. Any damage incurred shall be repaired immediately.
2. All pipe elevations shown are invert (I) elevations.
3. The Contractor shall locate all existing utilities a minimum of two weeks in advance of construction operations in vicinity of utilities.
4. For all standard details see standards bound in Specifications.
5. All water mains to be C.I.P. or D.I.P. and have a minimum of 3 1/2' cover.
6. Block all fittings with concrete, see standard details bound in Specifications.
7. All Fire Hydrants shall be buttressed with concrete in accordance with Standard Detail W-4.
8. Clear all utilities by a minimum of 6', clear all poles by 2'-0" minimum or tunnel as required.



PROFILE
 Scale: Horiz. 1" = 100'
 Vert. 1" = 10'



Kenneth A. Meland

Stoncrest Section # 7
 Contract # 230 W

WHITMAN, REQUARDT & ASSOCIATES ENGINEERS 1304 ST. PAUL ST. BALTIMORE, MARYLAND	HOWARD COUNTY METROPOLITAN COMMISSION 2-28-68 W O Filbert DATE CHIEF ENGINEER	CONTRACT NO. 230-W	PLAN AND PROFILE OF WATER MAINS	ELECTION DISTRICT ELLICOTT CITY NO. 2	DRAWING NO. 1 OF 1 SCALE AS SHOWN
---	--	--------------------	------------------------------------	--	--------------------------------------

NS 230-W/1