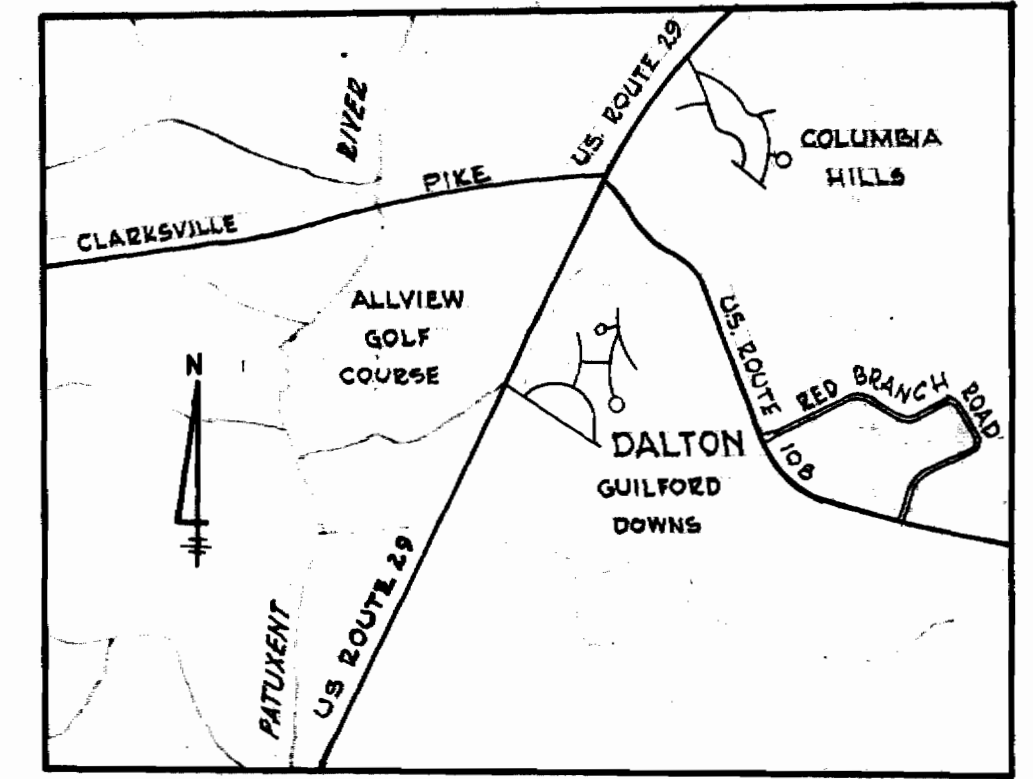
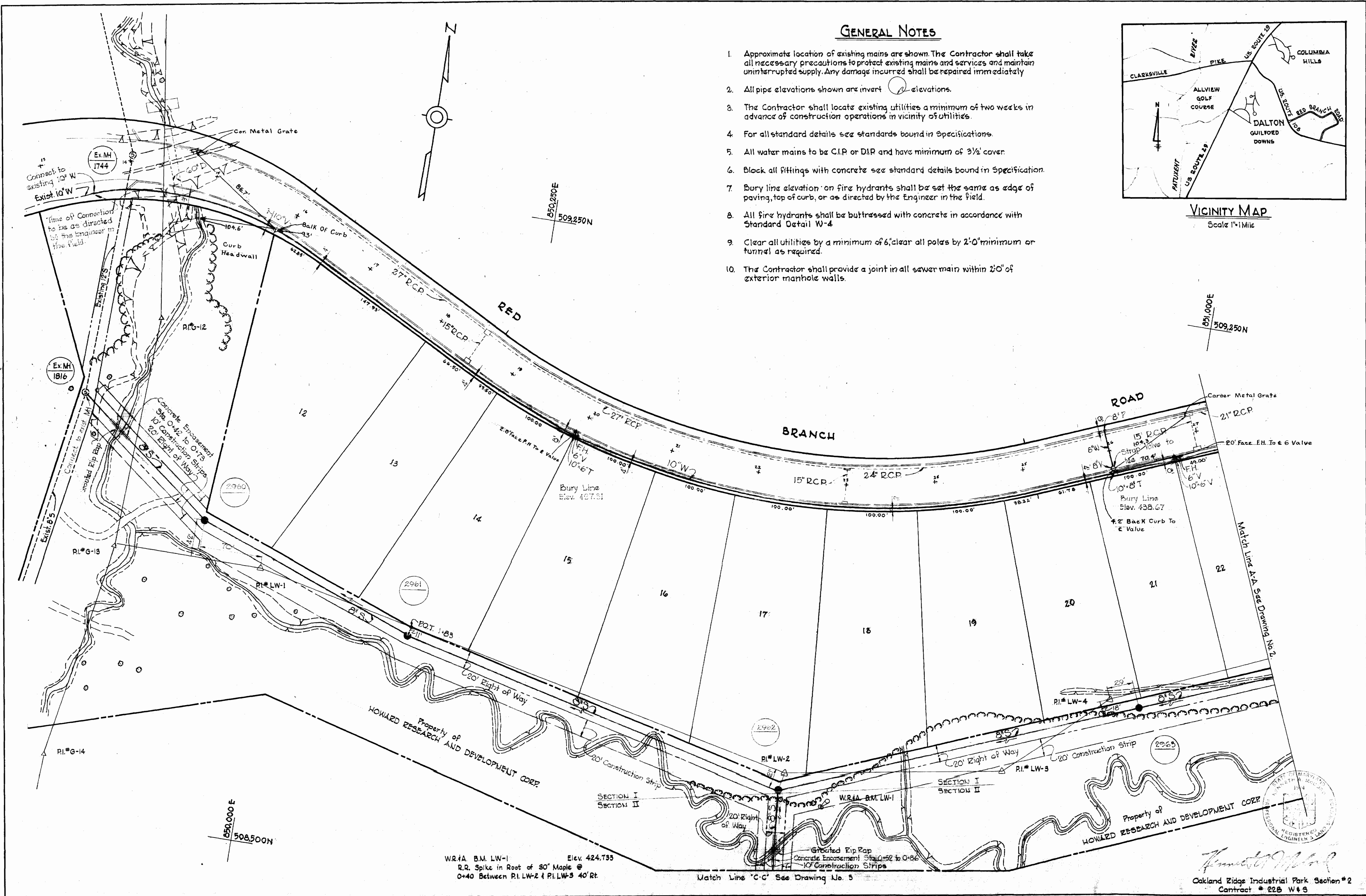


GENERAL NOTES

1. Approximate location of existing mains are shown. The Contractor shall take all necessary precautions to protect existing mains and services and maintain uninterrupted supply. Any damage incurred shall be repaired immediately.
2. All pipe elevations shown are invert elevations.
3. The Contractor shall locate existing utilities a minimum of two weeks in advance of construction operations in vicinity of utilities.
4. For all standard details see standards bound in Specifications.
5. All water mains to be C.I.P. or D.I.P. and have minimum of 3 1/2' cover.
6. Block all fittings with concrete see standard details bound in Specification.
7. Bury line elevation on fire hydrants shall be set the same as edge of paving, top of curb, or as directed by the Engineer in the field.
8. All fire hydrants shall be buttressed with concrete in accordance with Standard Detail W-4.
9. Clear all utilities by a minimum of 6'; clear all poles by 2'-0" minimum or tunnel as required.
10. The Contractor shall provide a joint in all sewer main within 2'-0" of exterior manhole walls.



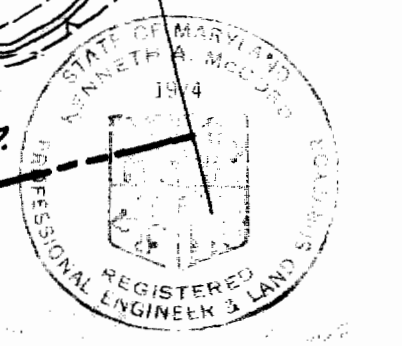
VICINITY MAP
Scale 1"=1 Mile



W.R.#A B.M. LW-1 Elev. 424.733
R.R. Spike in Root of 30' Maple @
0+40 Between P.I. LW-2 & P.I. LW-3 40' Rt.

Match Line 'C-C' See Drawing No. 5

Oakland Ridge Industrial Park Section #2
Contract # 228 W & S



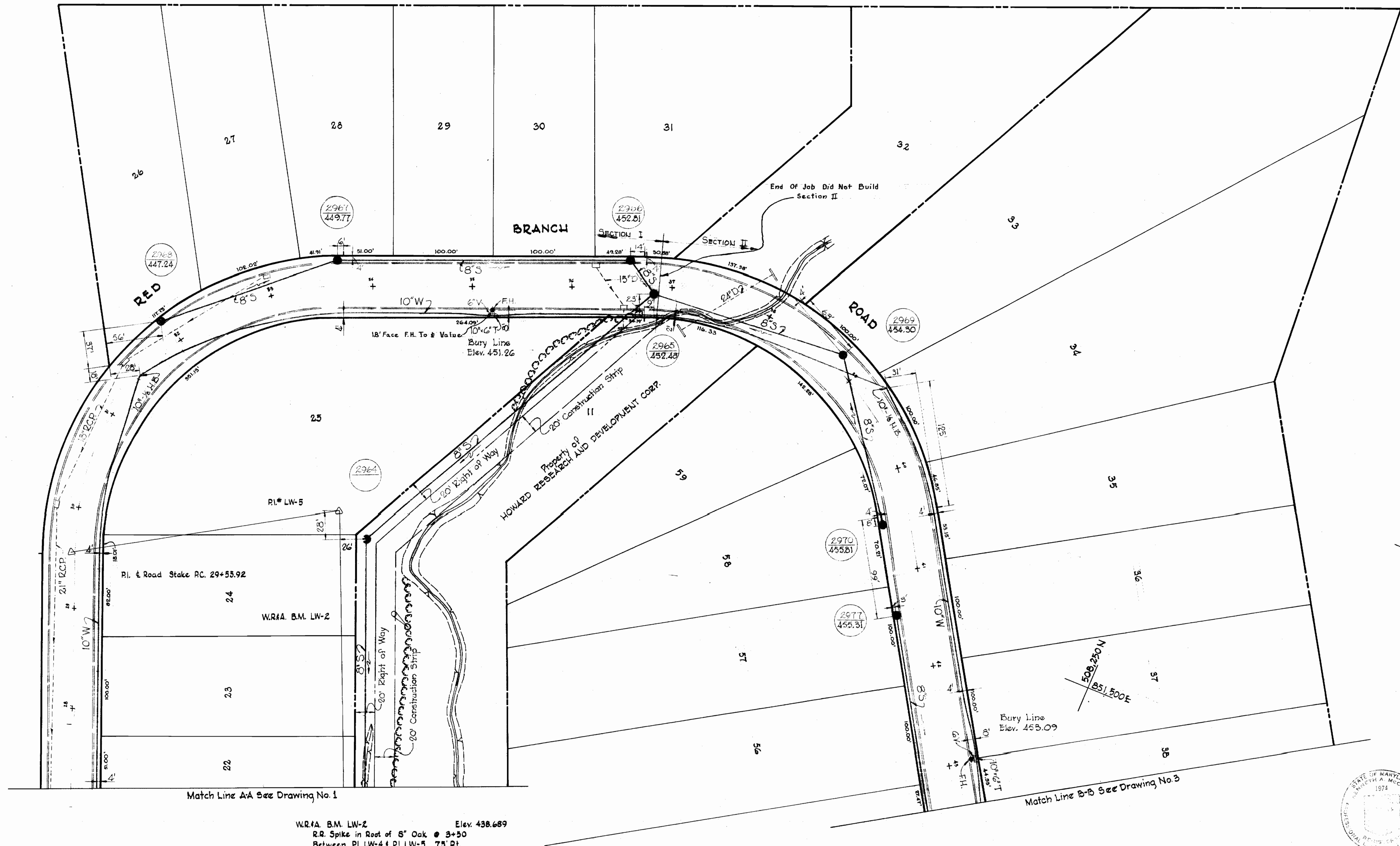
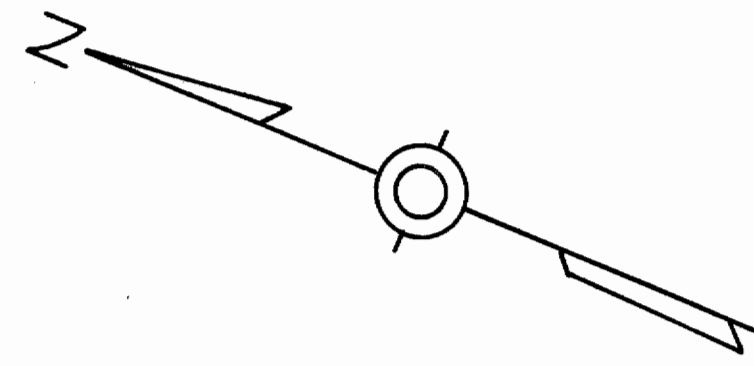
Whitman, Requardt & Associates, Inc.

15 228-WS/1

WHITMAN, REQUARDT & ASSOCIATES ENGINEERS 1304 ST. PAUL ST. BALTIMORE, MARYLAND	HOWARD COUNTY METROPOLITAN COMMISSION DATE 4-3-68 <i>W O Requardt</i> CHIEF ENGINEER	CONTRACT NO. 228 W & S	PLAN OF WATER AND SEWER MAINS	COLUMBIA OAKLAND RIDGE INDUSTRIAL PARK ELECTION DISTRICT - ELLICOTT CITY No. 2	DRAWING NO. 1 OF 4 SCALE 1"=50'
---	---	------------------------	-------------------------------	--	---------------------------------

228-W5/2

509.500N
851.750E



508.000N
851.750E

508.250N
851.500E

Match Line A-A See Drawing No. 1

Match Line B-B See Drawing No. 3

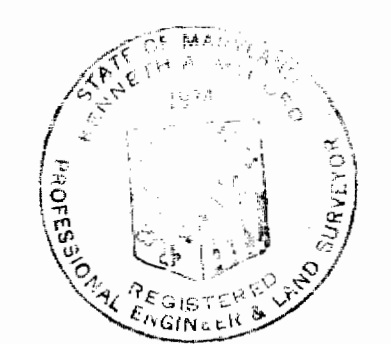
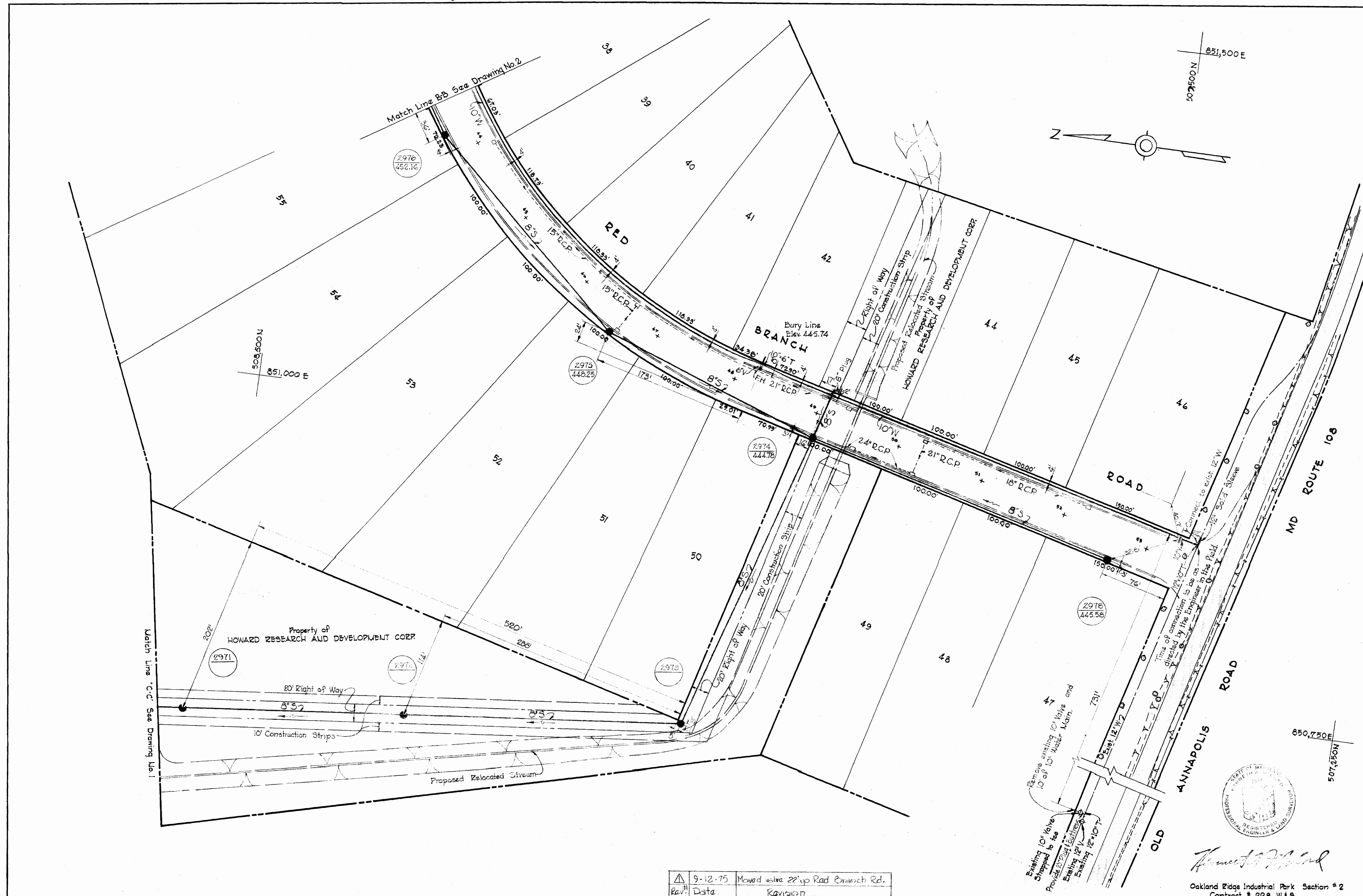
W.R.#1A B.M. LW-2 Elev. 438.689
R.R. Spike in Root of 8" Oak @ 3+50
Between RI. LW-4 & RI. LW-5 75' Rt.



Howard Research and Development Corp.
Oakland Ridge Industrial Park Section #2
Election District - Ellicott City No. 2
Contract # 228 W&S

WHITMAN, REQUARDT & ASSOCIATES ENGINEERS 1304 ST. PAUL ST. BALTIMORE, MARYLAND	HOWARD COUNTY METROPOLITAN COMMISSION 4-3-68 DATE	CONTRACT NO. 228 W&S W. J. Feltner CHIEF ENGINEER	PLAN OF WATER AND SEWER MAINS	COLUMBIA OAKLAND RIDGE INDUSTRIAL PARK ELECTION DISTRICT - ELLICOTT CITY No. 2	DRAWING NO. 2 OF 4 SCALE 1" = 50' 509-487 508-487
---	---	---	----------------------------------	--	--

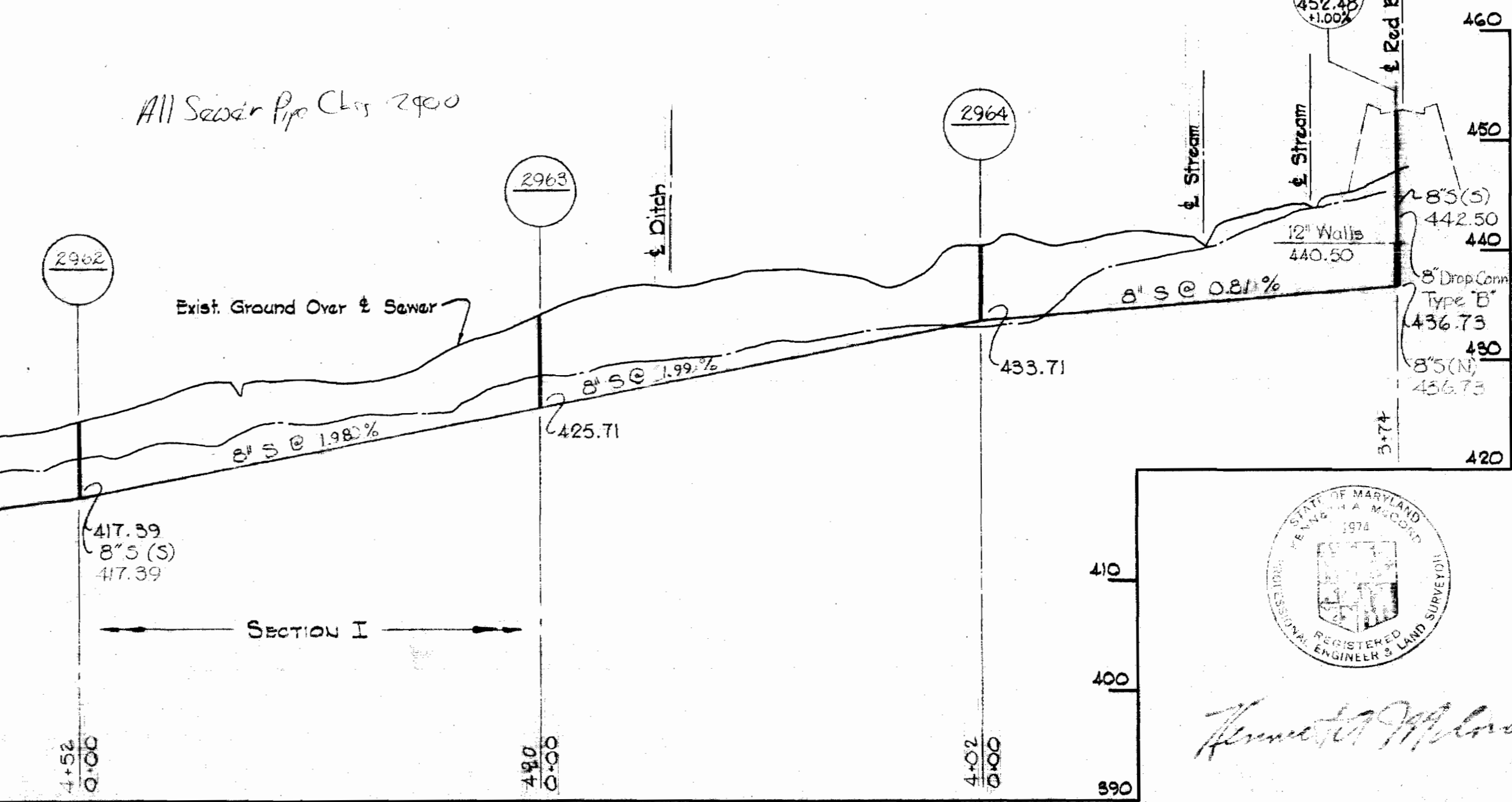
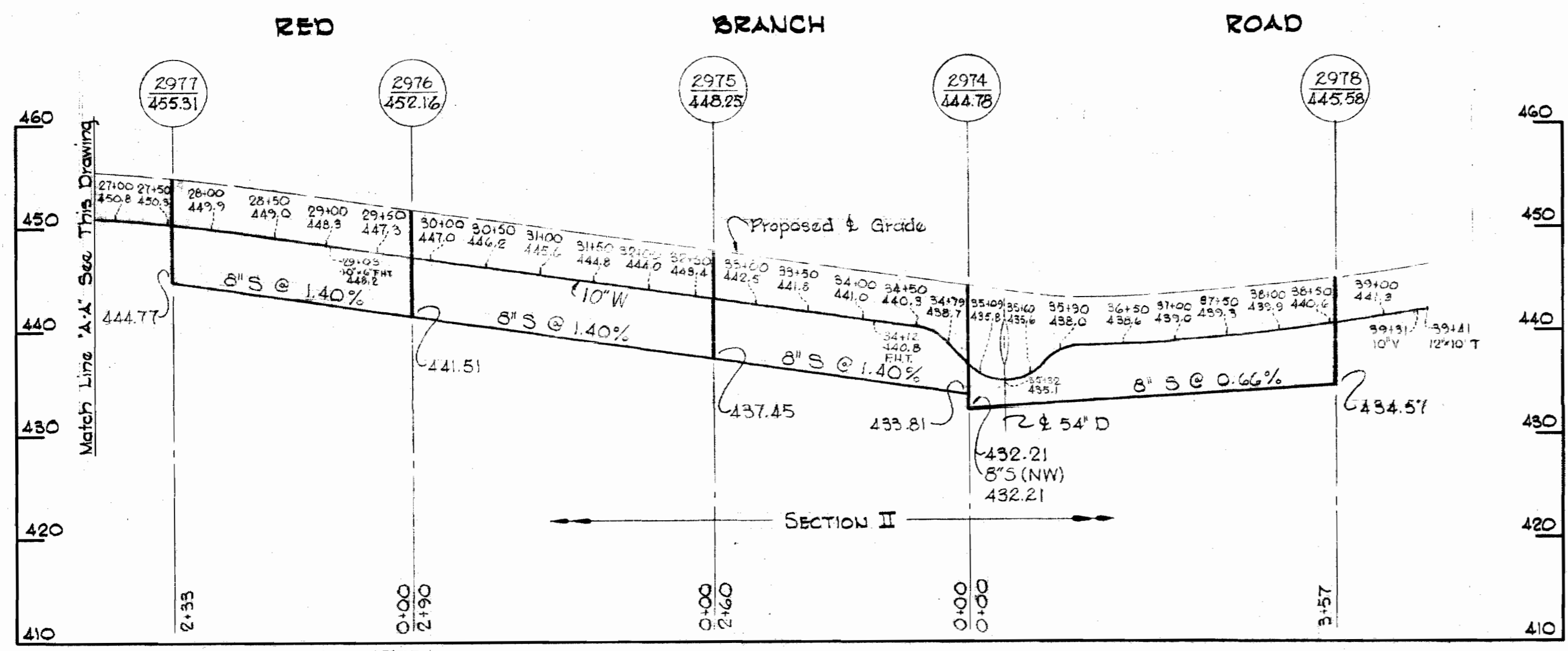
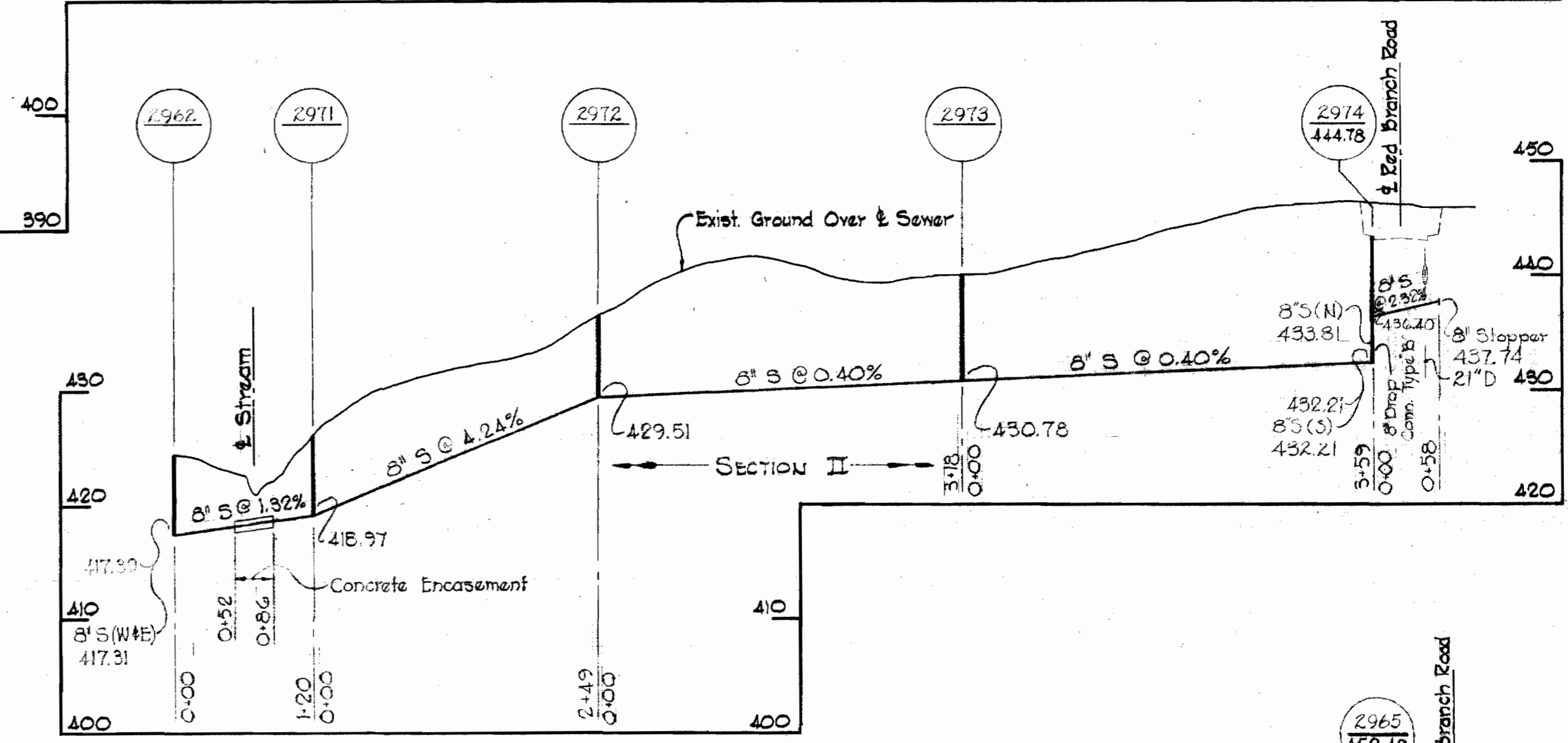
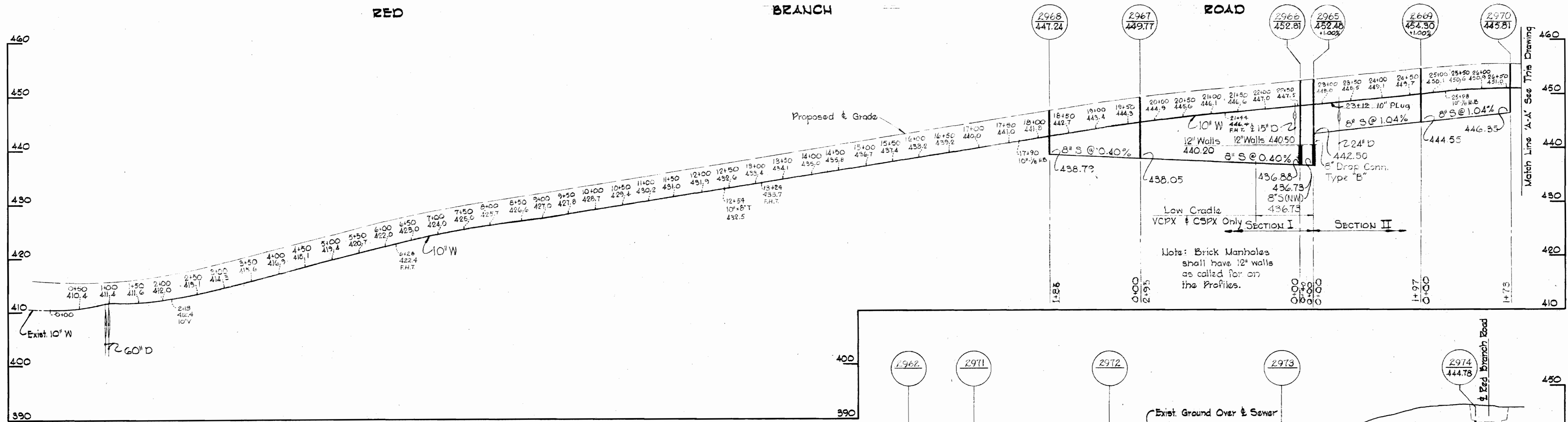
S 228-WS/3



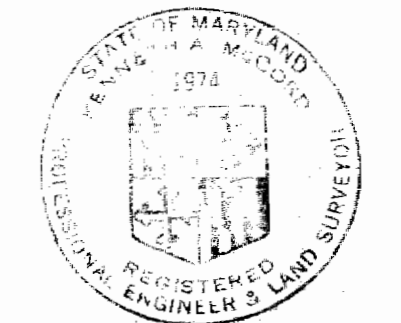
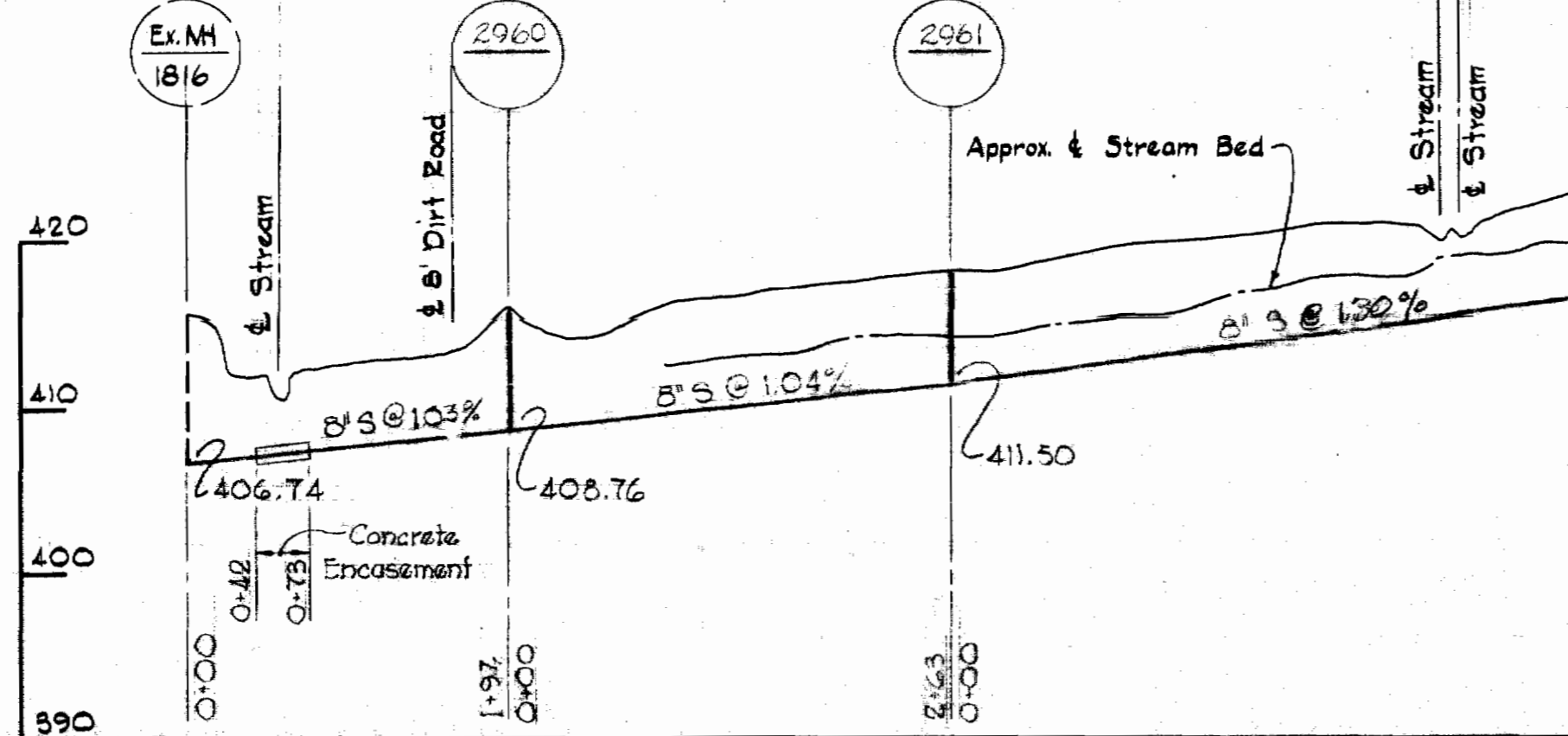
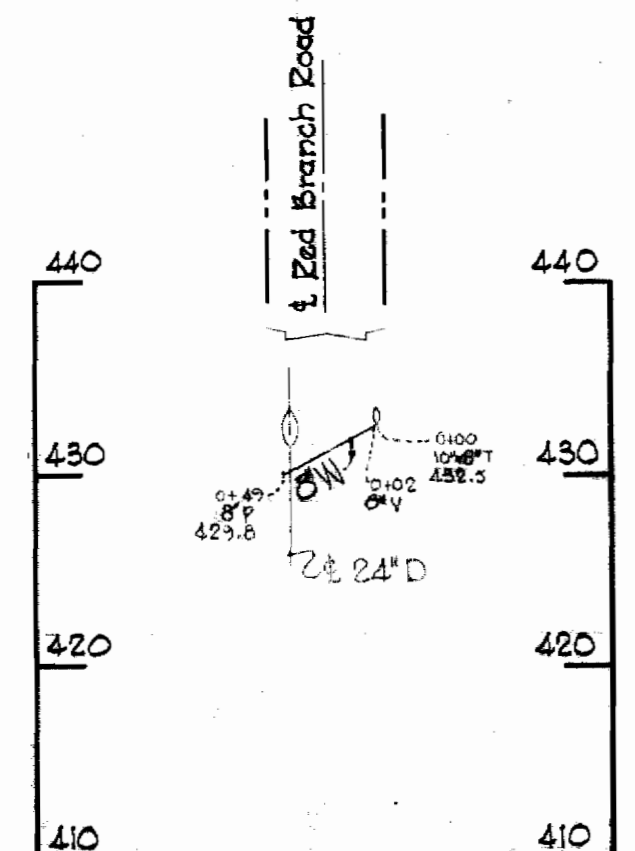
James M. ...
 Oakland Ridge Industrial Park Section #2
 Contract # 228 W&S

▲	9-12-75	Moved valve 22' up Road Branch Rd.
Rev#	Date	Revision

WHITMAN, REQUARDT & ASSOCIATES ENGINEERS 1304 ST. PAUL ST. BALTIMORE, MARYLAND	HOWARD COUNTY METROPOLITAN COMMISSION DATE <u>4-3-68</u> <u>W. O. ...</u> CHIEF ENGINEER	CONTRACT NO. <u>228 W&S</u>	PLAN OF WATER AND SEWER MAINS	COLUMBIA OAKLAND RIDGE INDUSTRIAL PARK ELECTION DISTRICT - ELLICOTT CITY No. 2	DRAWING NO. <u>3</u>	SCALE 1" = 50' 500-487 507-487
					OF <u>4</u>	



RED BRANCH ROAD WATER CROSSING @ STA. 26+00



Herbert M. Meland

Oakland Ridge Industrial Park Section #2
Contract # 228 W & S

WHITMAN, REQUARDT & ASSOCIATES
ENGINEERS
1304 ST. PAUL ST.
BALTIMORE, MARYLAND

HOWARD COUNTY METROPOLITAN COMMISSION
DATE 4-3-68
W. O. Pullert
CHIEF ENGINEER

CONTRACT NO. 228 W & S

PROFILES OF WATER
AND SEWER MAINS

COLUMBIA
OAKLAND RIDGE INDUSTRIAL PARK
ELECTION DISTRICT - ELLICOTT CITY No. 2

DRAWING NO. 4 OF 4
SCALE H-1"=100'
V-1"=10'

S 228-W&S4