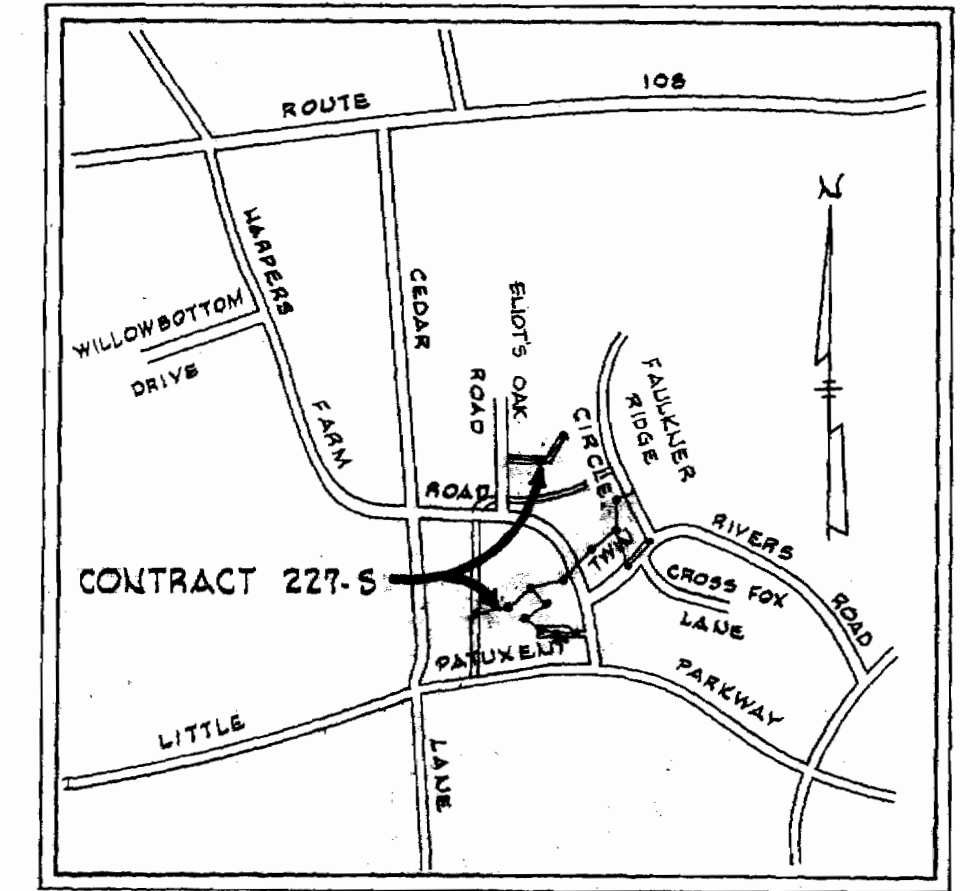
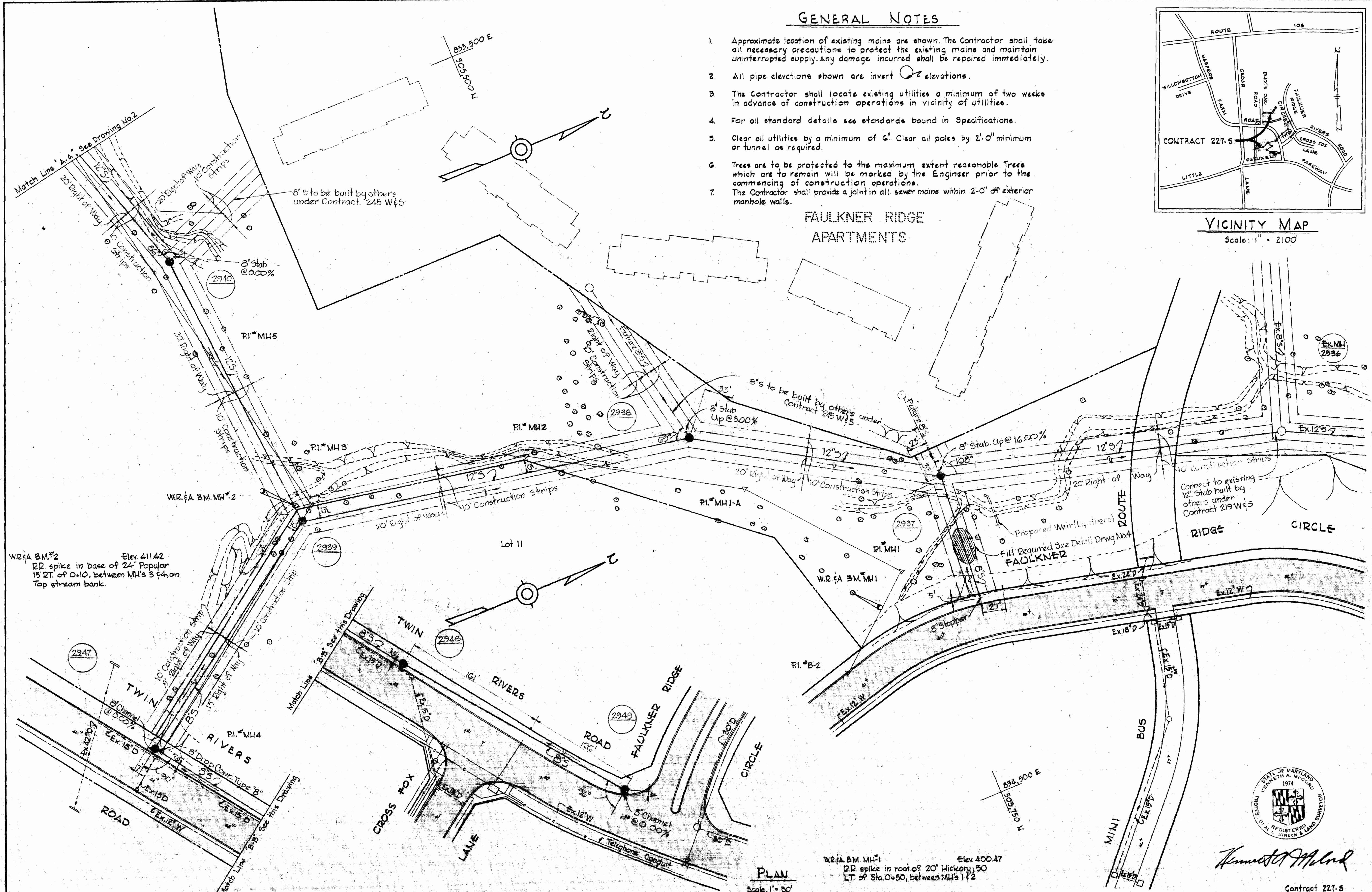


GENERAL NOTES

1. Approximate location of existing mains are shown. The Contractor shall take all necessary precautions to protect the existing mains and maintain uninterrupted supply. Any damage incurred shall be repaired immediately.
2. All pipe elevations shown are invert elevations.
3. The Contractor shall locate existing utilities a minimum of two weeks in advance of construction operations in vicinity of utilities.
4. For all standard details see standards bound in Specifications.
5. Clear all utilities by a minimum of 6'. Clear all poles by 2'-0" minimum or tunnel as required.
6. Trees are to be protected to the maximum extent reasonable. Trees which are to remain will be marked by the Engineer prior to the commencing of construction operations.
7. The Contractor shall provide a joint in all sewer mains within 2'-0" of exterior manhole walls.



VICINITY MAP
Scale: 1" = 2100'



Kenneth A. McCord

Contract 227-5

VS 227-5/1

WHITMAN, REQUARDT & ASSOCIATES
ENGINEERS
1304 ST. PAUL ST.
BALTIMORE, MARYLAND

HOWARD COUNTY METROPOLITAN COMMISSION
DATE: 4-19-68
W. O. P. [Signature]
CHIEF ENGINEER

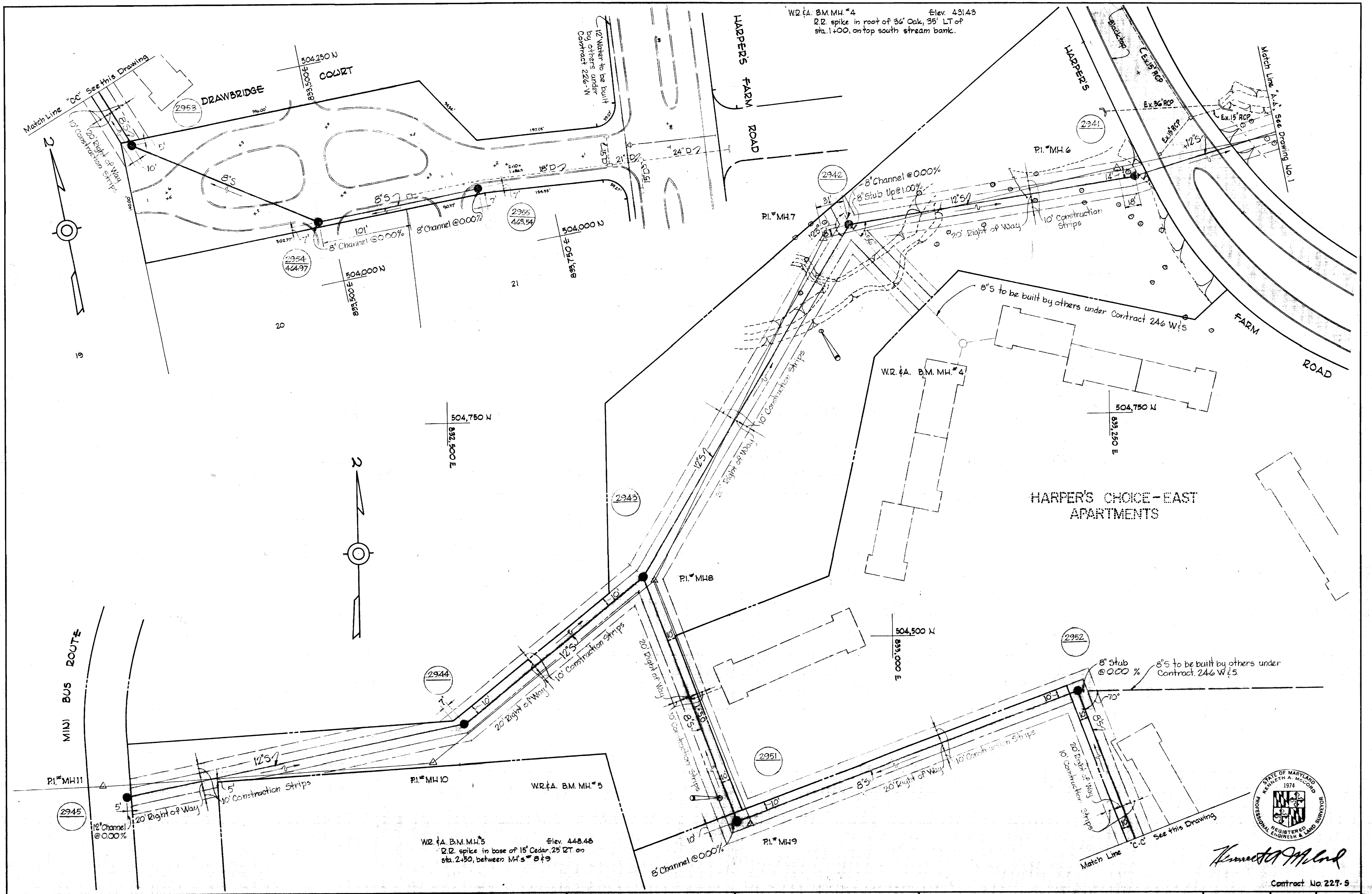
CONTRACT NO. 227-5

PLAN OF
SEWER MAINS

COLUMBIA
VILLAGE OF HARPER'S CHOICE
ELECTION DISTRICT CLARKSVILLE NO. 5

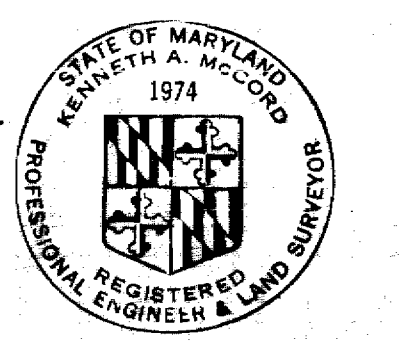
DRAWING NO. 1 OF 4
SCALE AS SHOWN

WS 227-5/2



W.R. & A. B.M. MH #4 Elev. 431.43
 R.R. spike in root of 36" Oak, 35' LT of sta. 1+00, on top south stream bank.

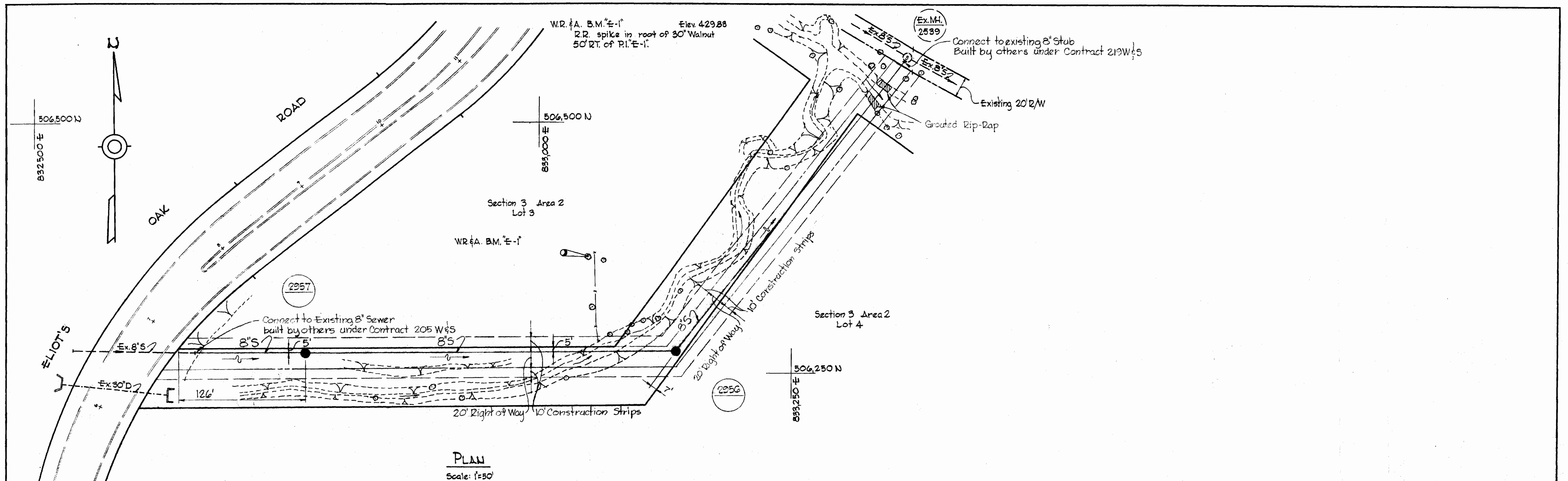
W.R. & A. B.M. MH #5 Elev. 448.48
 R.R. spike in base of 15" Cedar, 25' RT on sta. 2+50, between MH's #3 & #9



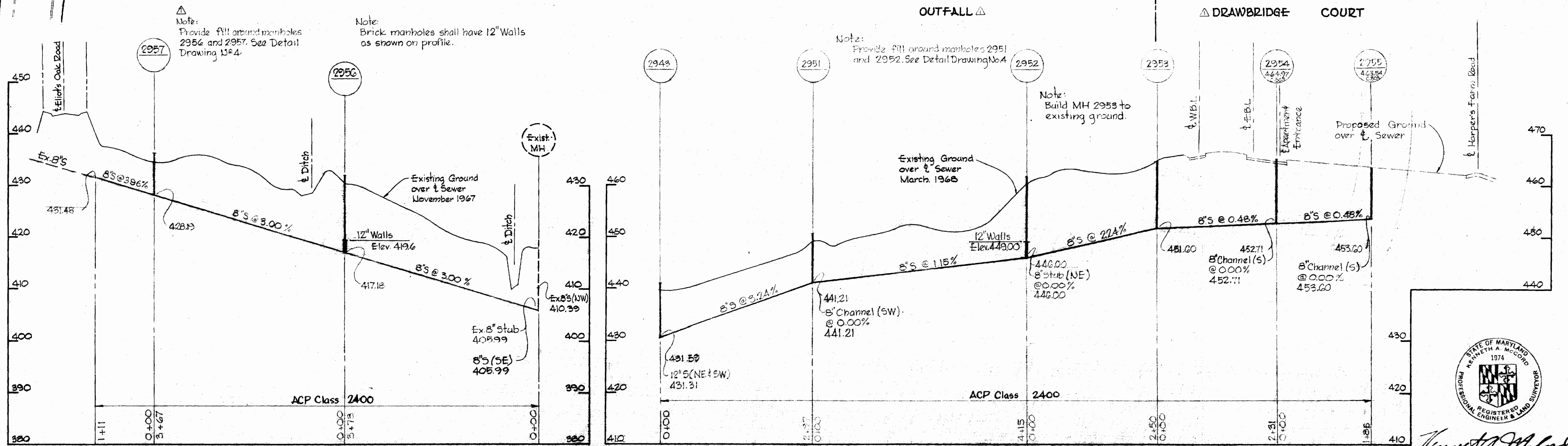
Kenneth A. McCord

Contract No. 227-5

WHITMAN, REQUARDT & ASSOCIATES ENGINEERS 1304 ST. PAUL ST. BALTIMORE, MARYLAND	HOWARD COUNTY METROPOLITAN COMMISSION DATE: 4-19-68 W. O. WILLIAMS CHIEF ENGINEER	CONTRACT NO. 227-5	PLAN OF SEWER MAINS	COLUMBIA VILLAGE OF HARPER'S CHOICE ELECTION DISTRICT CLARKSVILLE NO. 5	DRAWING NO. 2 OF 4 SCALE 1" = 50' AS BUILT JULY 31, 1968 F.B. #3285 F.B. #4029
---	--	--------------------	------------------------	---	--



PLAN
Scale: 1"=50'



PROFILE
Scale: Horiz: 1"=100' Vert: 1"=10'

WHITMAN, REQUARDT & ASSOCIATES
ENGINEERS
1304 ST. PAUL ST.
BALTIMORE, MARYLAND

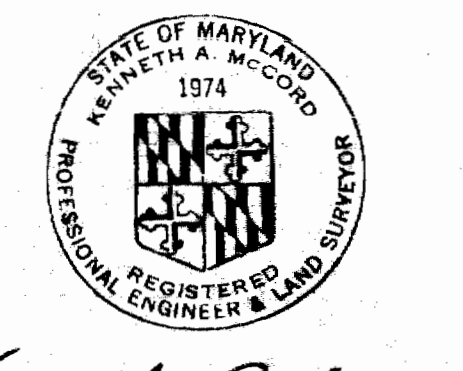
HOWARD COUNTY METROPOLITAN COMMISSION
DATE: 4-19-68
W. O. Pillot
CHIEF ENGINEER

CONTRACT NO. 227-S

PLAN AND PROFILE OF SEWER MAINS

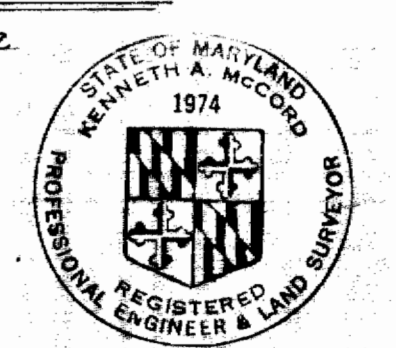
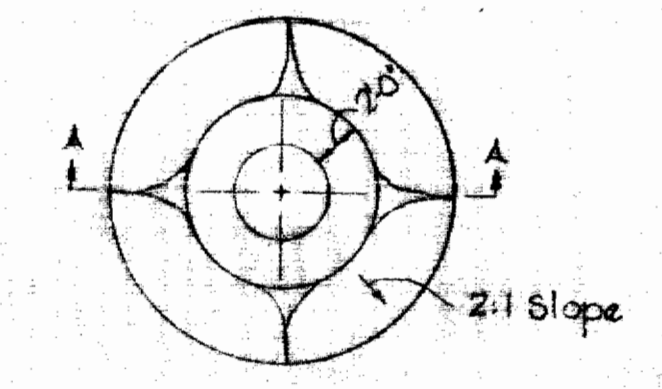
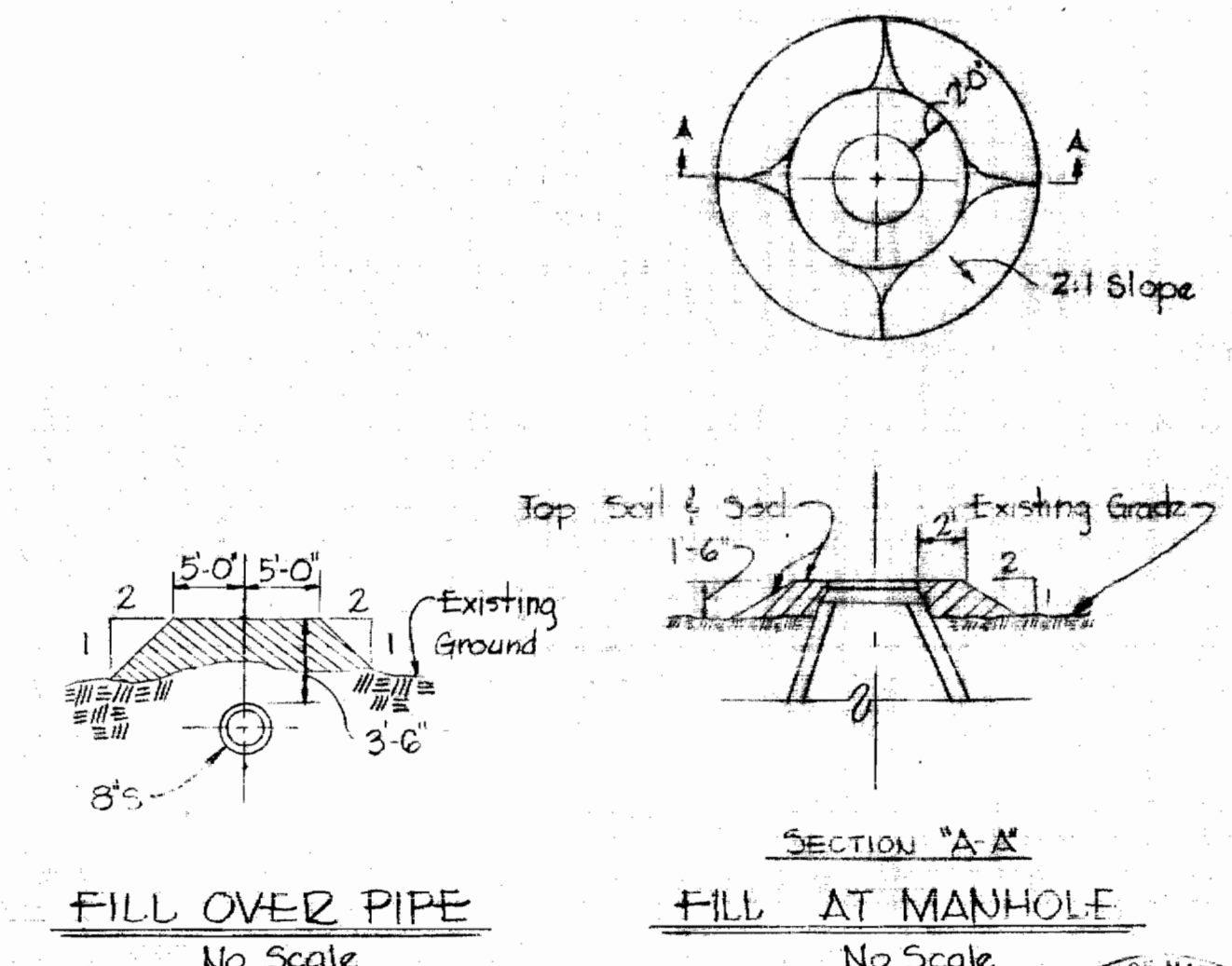
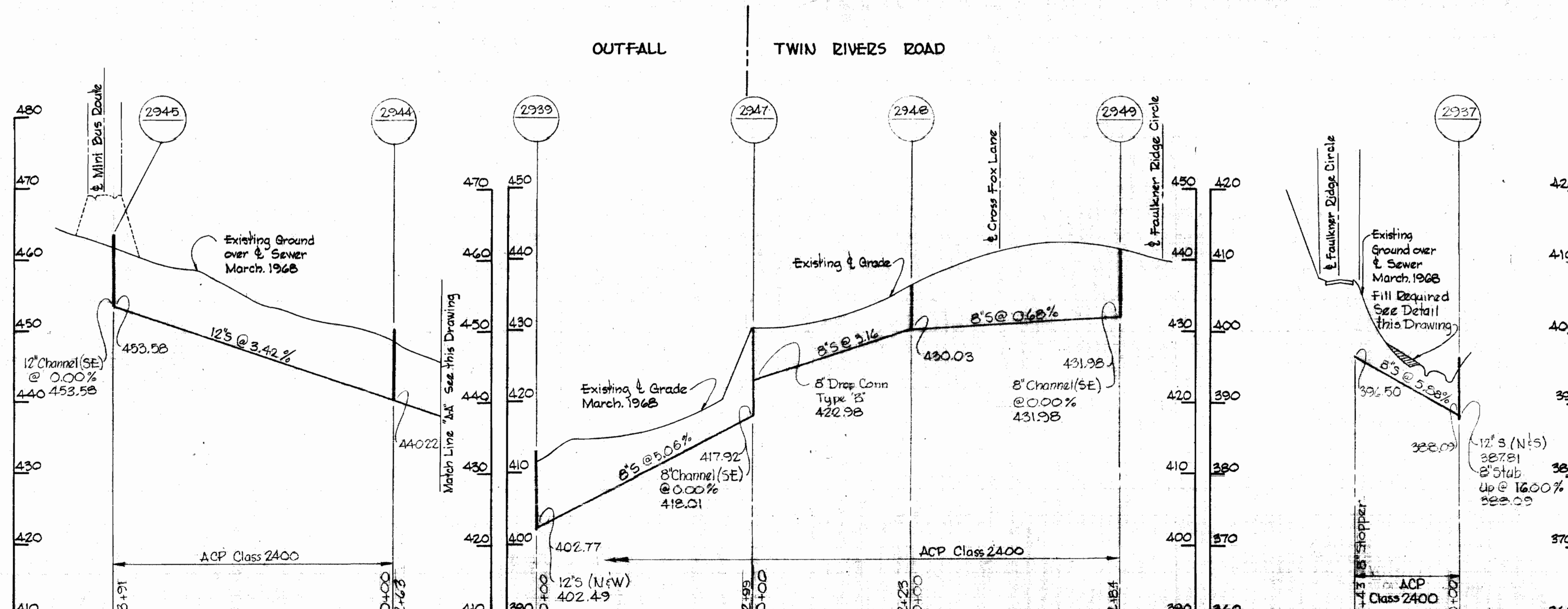
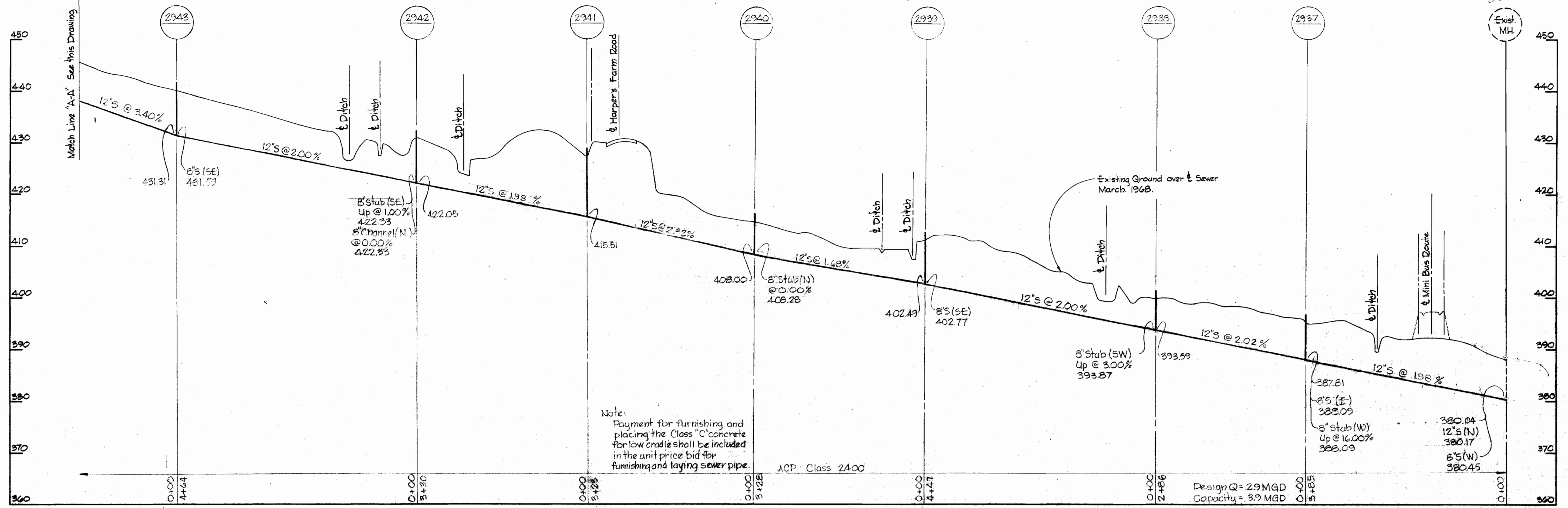
COLUMBIA VILLAGE OF HARPERS CHOICE ELECTION DISTRICT CLARKSVILLE NO.5

DRAWING NO. 3 OF 4
SCALE AS SHOWN



Kenneth A. McCord
Contract 227-S

Note:
Provide fill around 3 manholes 2937 thru
2945. See Detail this Drawing



Kenneth A. McCord

Contract 227-5

<p>WHITMAN, REQUARDT & ASSOCIATES ENGINEERS 1304 ST. PAUL ST. BALTIMORE, MARYLAND</p>	<p>HOWARD COUNTY METROPOLITAN COMMISSION 4-19-68 <i>W. O. Robert</i> DATE CHIEF ENGINEER</p>	<p>CONTRACT NO. 227-S</p>	<p>PROFILE OF SEWER MAINS</p>	<p>COLUMBIA VILLAGE OF HARPER'S CHOICE ELECTION DISTRICT CLARKSVILLE NO.5</p>	<p>DRAWING NO. 4 OF 4 SCALE AS SHOWN</p>
---	--	---------------------------	-----------------------------------	---	--