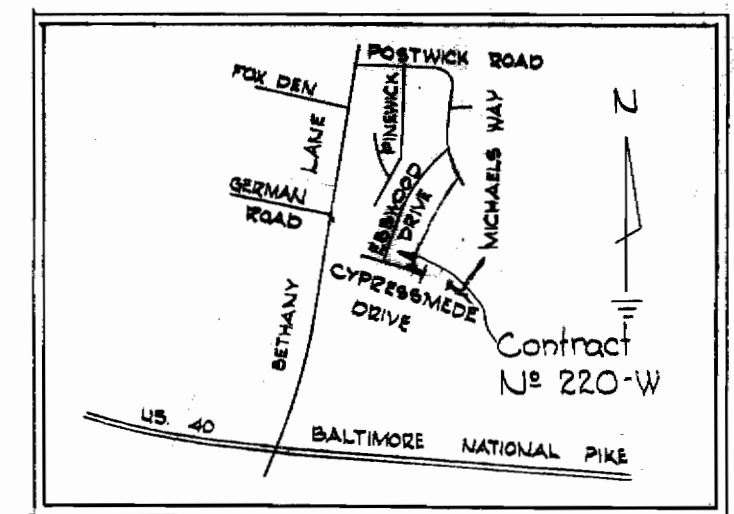
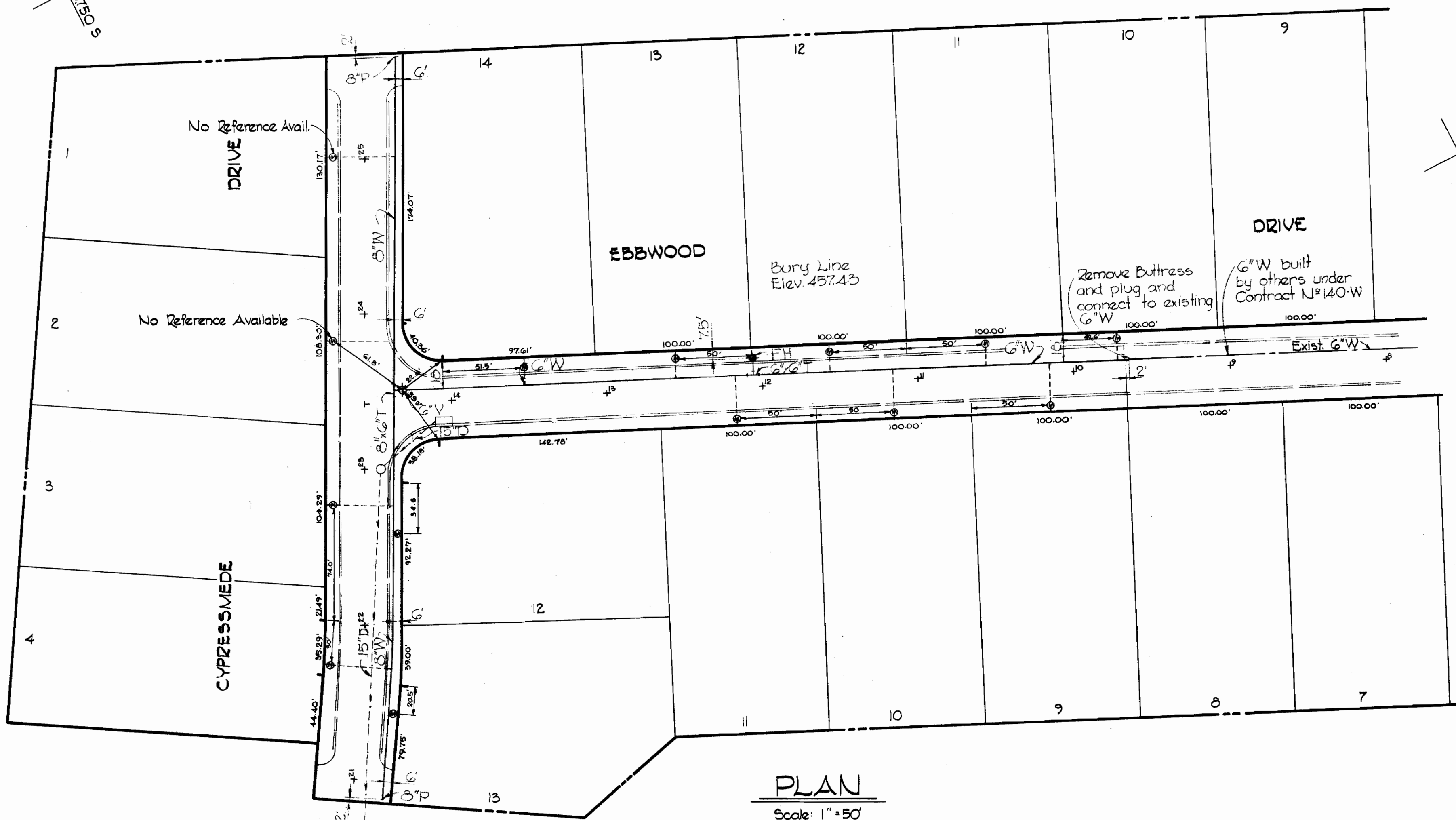


67.730 W  
57.50 S

W.R. & B.M. #51-U Elev. 426.61  
R.R. spike in base of GtE pole #45203,  
West side Bethany Lane 450' South  
of German Road.



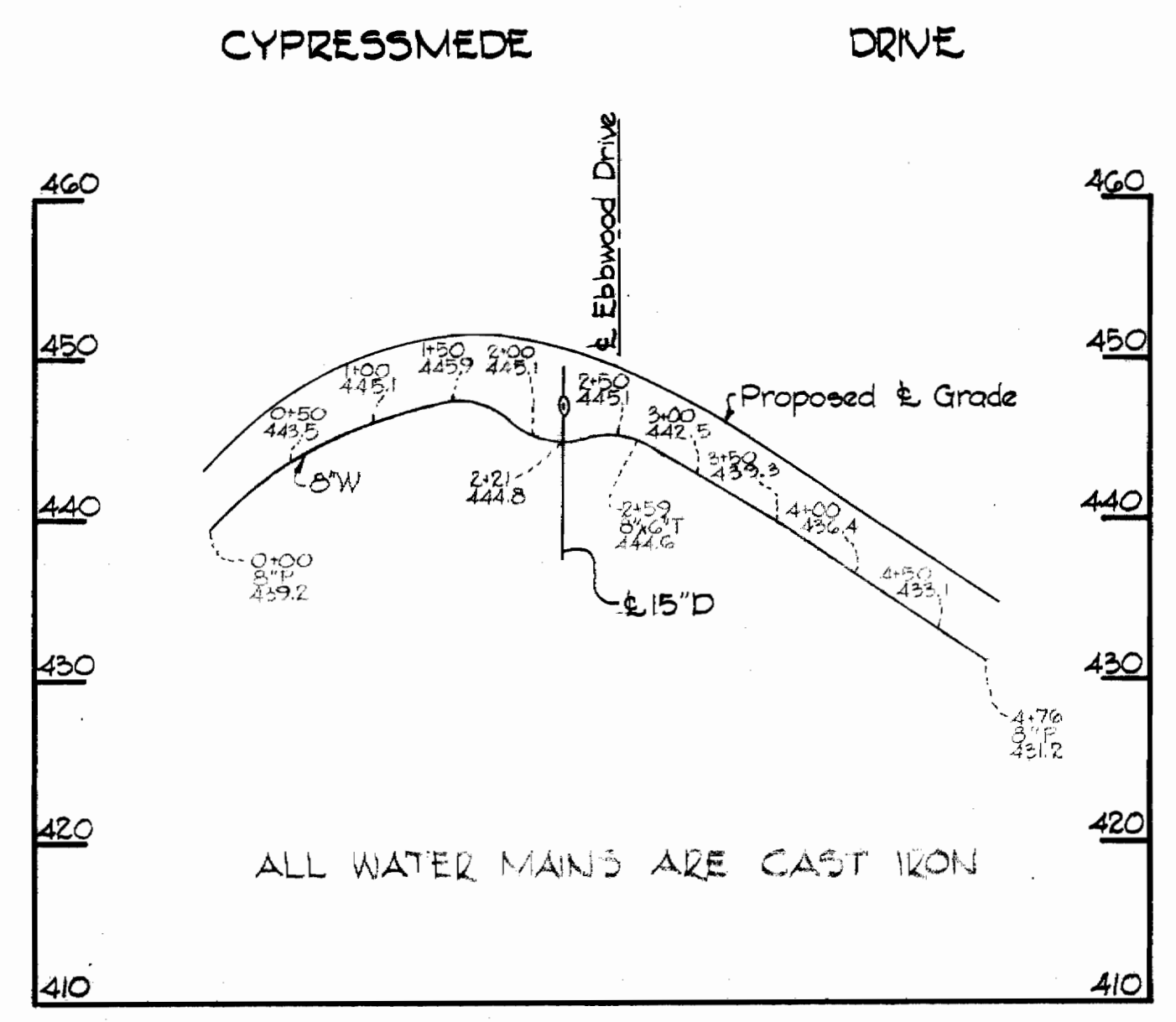
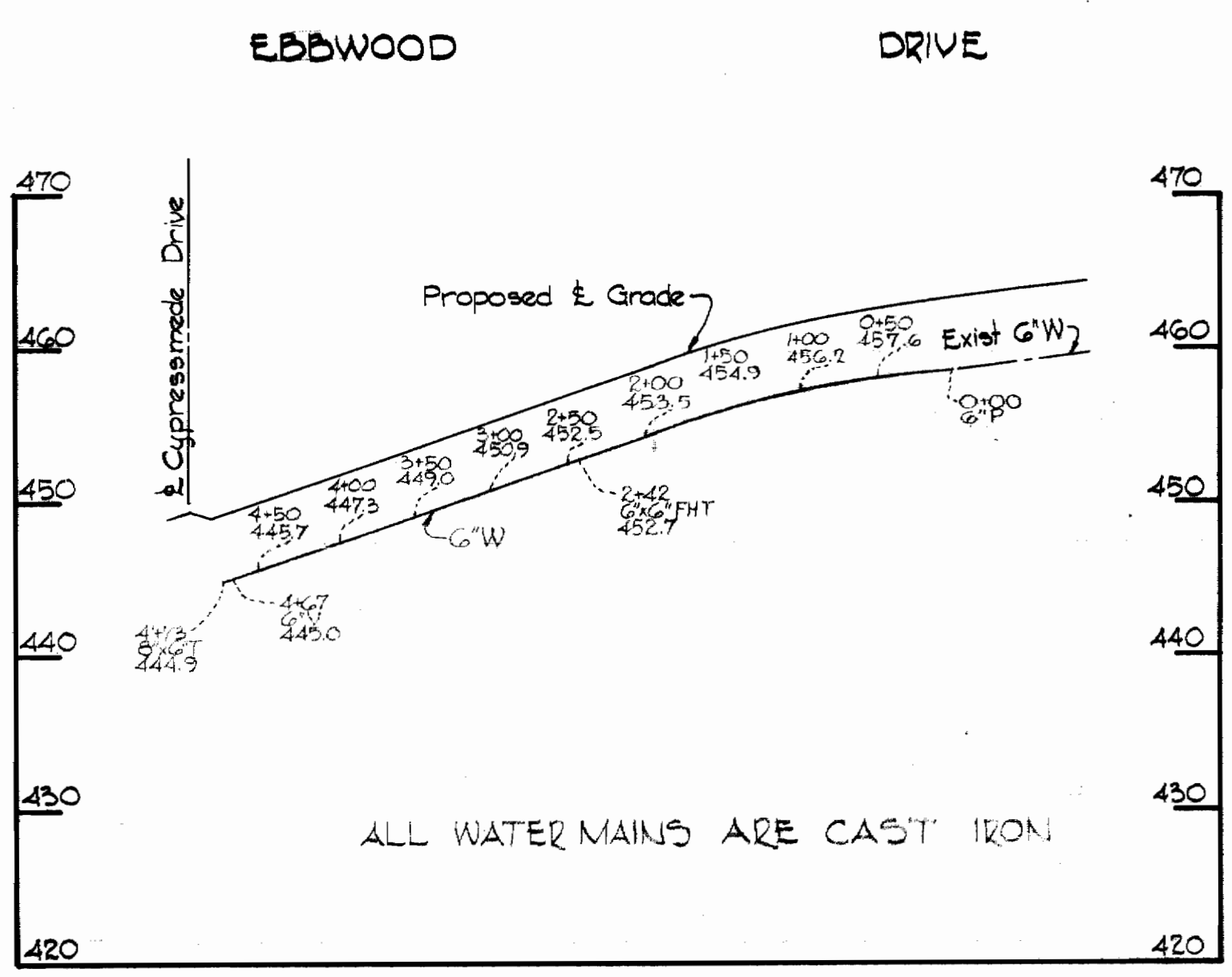
VICINITY MAP  
Scale: 1" = 1/2 mile



PLAN  
Scale: 1" = 50'

GENERAL NOTES

1. Approximate locations of existing mains are shown. The Contractor shall take all necessary precautions to protect the existing mains and maintain uninterrupted supply. Any damage incurred shall be repaired immediately.
2. All pipe elevations are invert elevations.
3. The Contractor shall locate existing utilities a minimum of two weeks in advance of construction operations in vicinity of utilities.
4. For all standard details see standards bound in Specifications.
5. All water mains to be C.I.P. or D.I.P. and have a minimum of 3 1/2' cover.
6. Block all fittings with concrete, see standard details bound in Specifications.
7. Bury line elevations on Fire Hydrants shall be set to the elevations shown on the drawings.
8. All Fire Hydrants to be buttressed with concrete in accordance with Standard Detail W-4.
9. Cost of strapping Fire Hydrants and Valves to be included in the unit price bid for furnishing and laying of water mains.
10. Clear all utilities by a minimum of 6', clear all poles by 2'0" minimum or tunnel as required.



PROFILE  
Scale: V. 1" = 10'  
H. 1" = 100'

QUANTITIES	
ITEM	QUANTITY
6" W	485'
8" W	476'
F.H.	1



*Kenneth A. McLeod*

Bethwood Section II  
Contract N# 220-W

SJS 220-W/1

WHITMAN, REQUARDT & ASSOCIATES ENGINEERS 1304 ST. PAUL ST. BALTIMORE, MARYLAND	HOWARD COUNTY METROPOLITAN COMMISSION DATE 9-2-68 W. O. Libert CHIEF ENGINEER	CONTRACT NO. 220-W	PLAN AND PROFILE OF WATER MAINS	ELECTION DISTRICT ELLICOTT CITY NO. 2	DRAWING NO. 1 OF 1 SCALE AS SHOWN
---	--	--------------------	------------------------------------	--	--------------------------------------