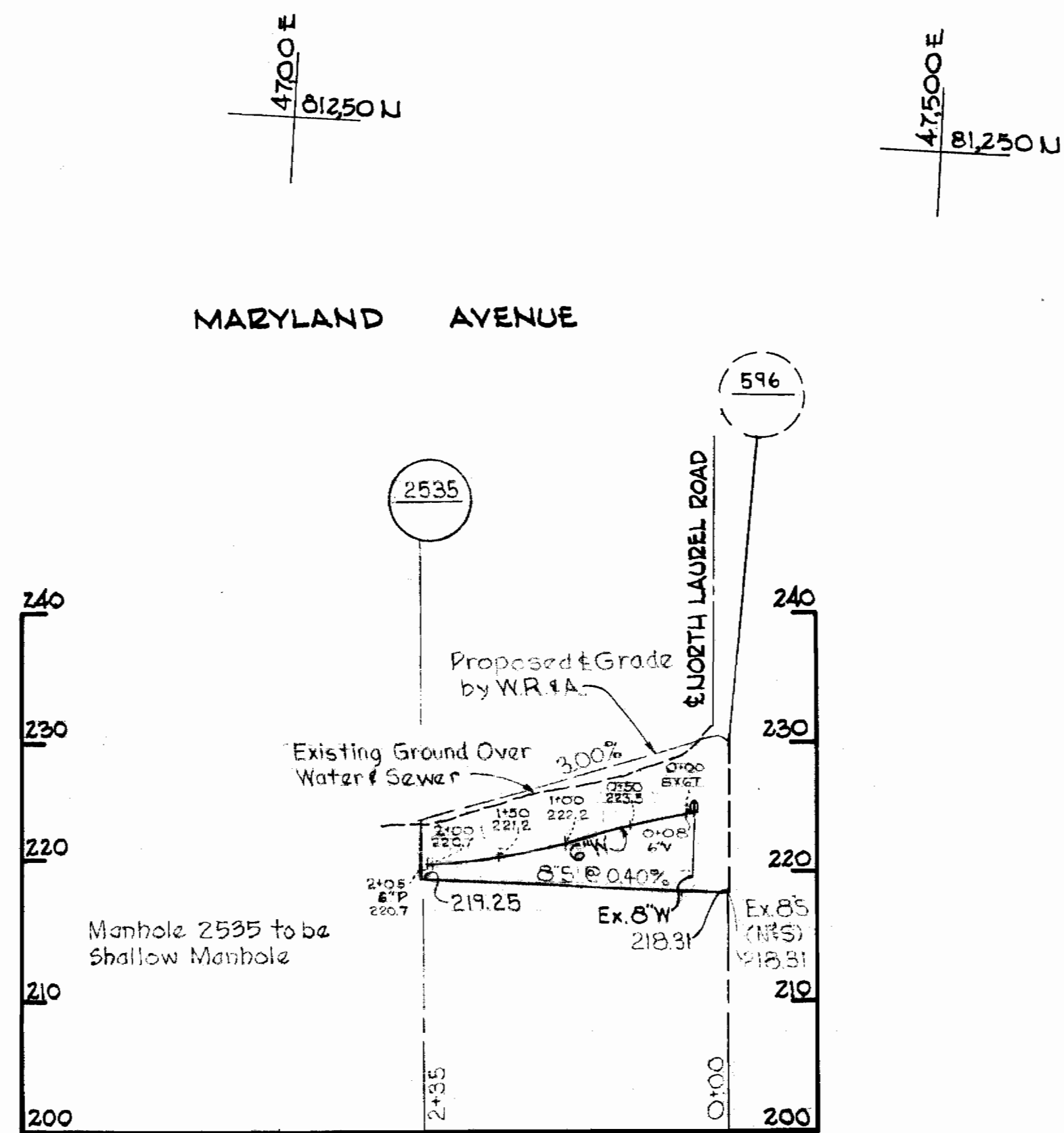


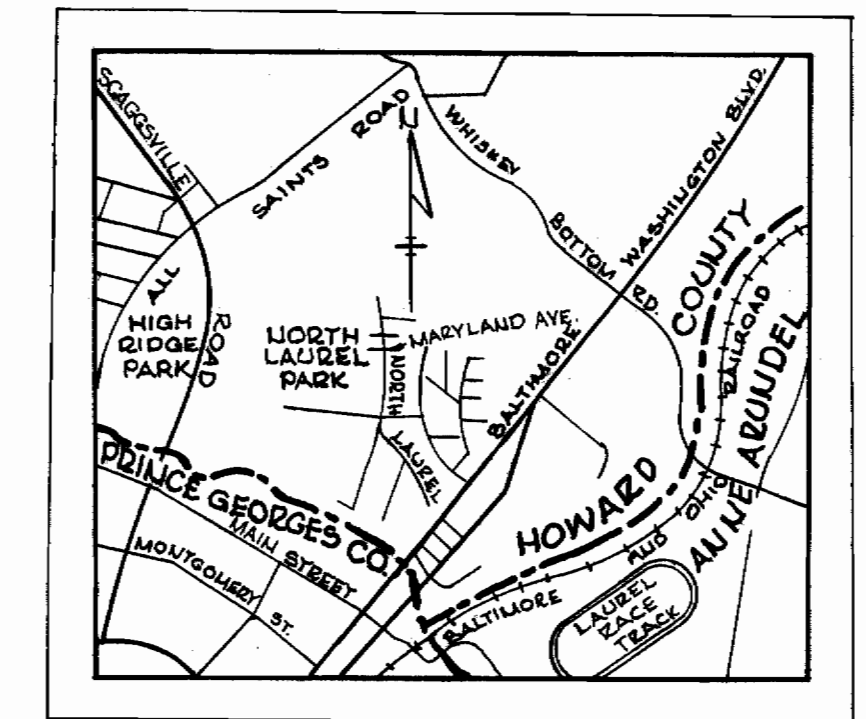
PLAN
Scale 1"=50'



PROFILE
Scale Hor. 1"=100'
Ver. 1"=10'

GENERAL NOTES

1. Approximate location of existing mains are shown. The Contractor shall take all necessary precautions to protect existing mains and services and maintain uninterrupted supply. Any damage incurred shall be repaired immediately.
2. All pipe elevations shown are invert R elevations.
3. The Contractor shall locate existing utilities a minimum of two weeks in advance of construction operations in vicinity of utilities.
4. For all standard details see standard details bound in specifications.
5. All water mains to be C.I.P. or D.I.P. and have a minimum of 3 1/2' cover.
6. Block all fittings with, see standard details bound in specifications.
7. Bury line elevations on fire hydrants shall be set the same as edge of paving, top of curb, or as directed by the engineer in the field.
8. All fire hydrants shall be buttressed with concrete in accordance with Standard Detail W-4.
9. Cost of strapping Fire Hydrants and Valves to trees to be included in the unit price bid for furnishing and laying of water mains.
10. Clear all utilities by a minimum of 6", clear all poles by 2'-0" minimum or tunnel as required.
11. The contractor shall provide a joint in all sewer mains within 2'-0" of exterior manhole walls.



VICINITY MAP
Scale 1"=2640'

QUANTITIES	
ITEM	QUANTITY
6" Water Mains	205 LF
6" Sewer Mains	235 LF



Kenneth A. McLeod

No.	Date	Revision
1	12-12-67	Revised location of 6" Water Main

WHITMAN, REQUARDT & ASSOCIATES ENGINEERS 1304 ST. PAUL ST. BALTIMORE, MARYLAND	HOWARD COUNTY METROPOLITAN COMMISSION DATE _____ <i>W. J. [Signature]</i> CHIEF ENGINEER	CONTRACT NO. 217 W&S	PLAN AND PROFILE OF WATER & SEWER MAINS	ELECTION DISTRICT GUILFORD NO. 6	DRAWING NO. 1 OF 1 SCALE AS SHOWN
--	--	---------------------------------	--	--	--

Contract No. 217 W&S

MS 217-WS/1