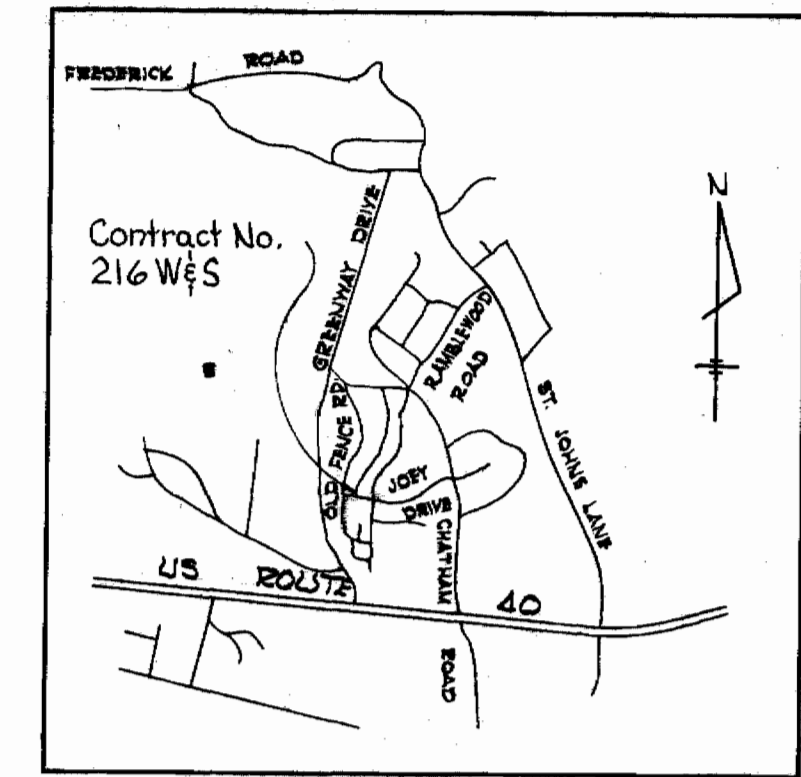
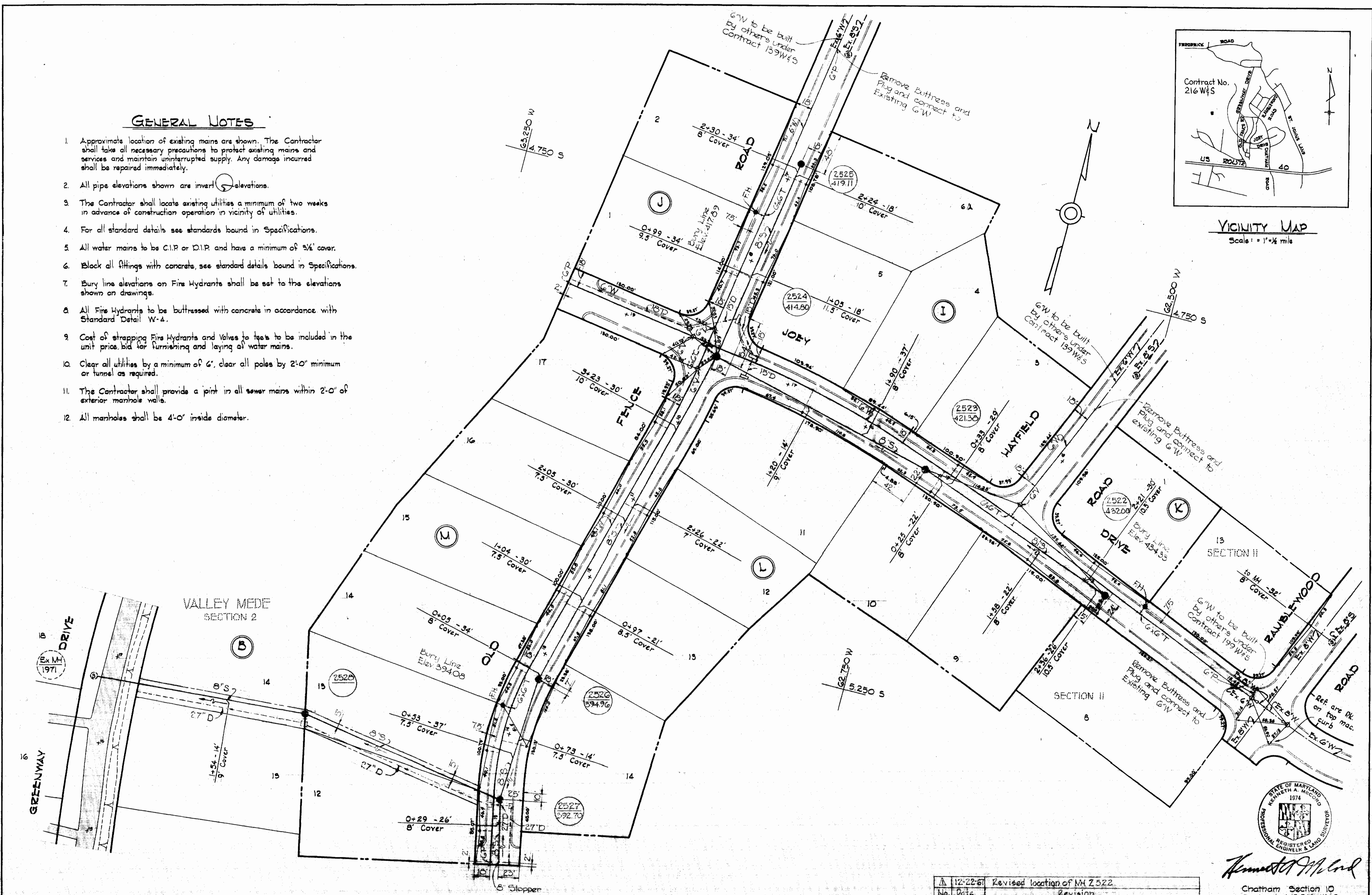


**GENERAL NOTES**

1. Approximate location of existing mains are shown. The Contractor shall take all necessary precautions to protect existing mains and services and maintain uninterrupted supply. Any damage incurred shall be repaired immediately.
2. All pipe elevations shown are invert elevations.
3. The Contractor shall locate existing utilities a minimum of two weeks in advance of construction operation in vicinity of utilities.
4. For all standard details see standards bound in Specifications.
5. All water mains to be C.I.P. or D.I.P. and have a minimum of 36" cover.
6. Block all fittings with concrete, see standard details bound in Specifications.
7. Bury line elevations on Fire Hydrants shall be set to the elevations shown on drawings.
8. All Fire Hydrants to be buttressed with concrete in accordance with Standard Detail W-4.
9. Cost of strapping Fire Hydrants and Valves to tags to be included in the unit price bid for furnishing and laying of water mains.
10. Clear all utilities by a minimum of 6'; clear all poles by 2'-0" minimum or tunnel as required.
11. The Contractor shall provide a joint in all sewer mains within 2'-0" of exterior manhole walls.
12. All manholes shall be 4'-0" inside diameter.



**VICINITY MAP**  
Scale: 1" = 1/4 mile



11-22-67	Revised location of MH 2522.
No. Date	Revision

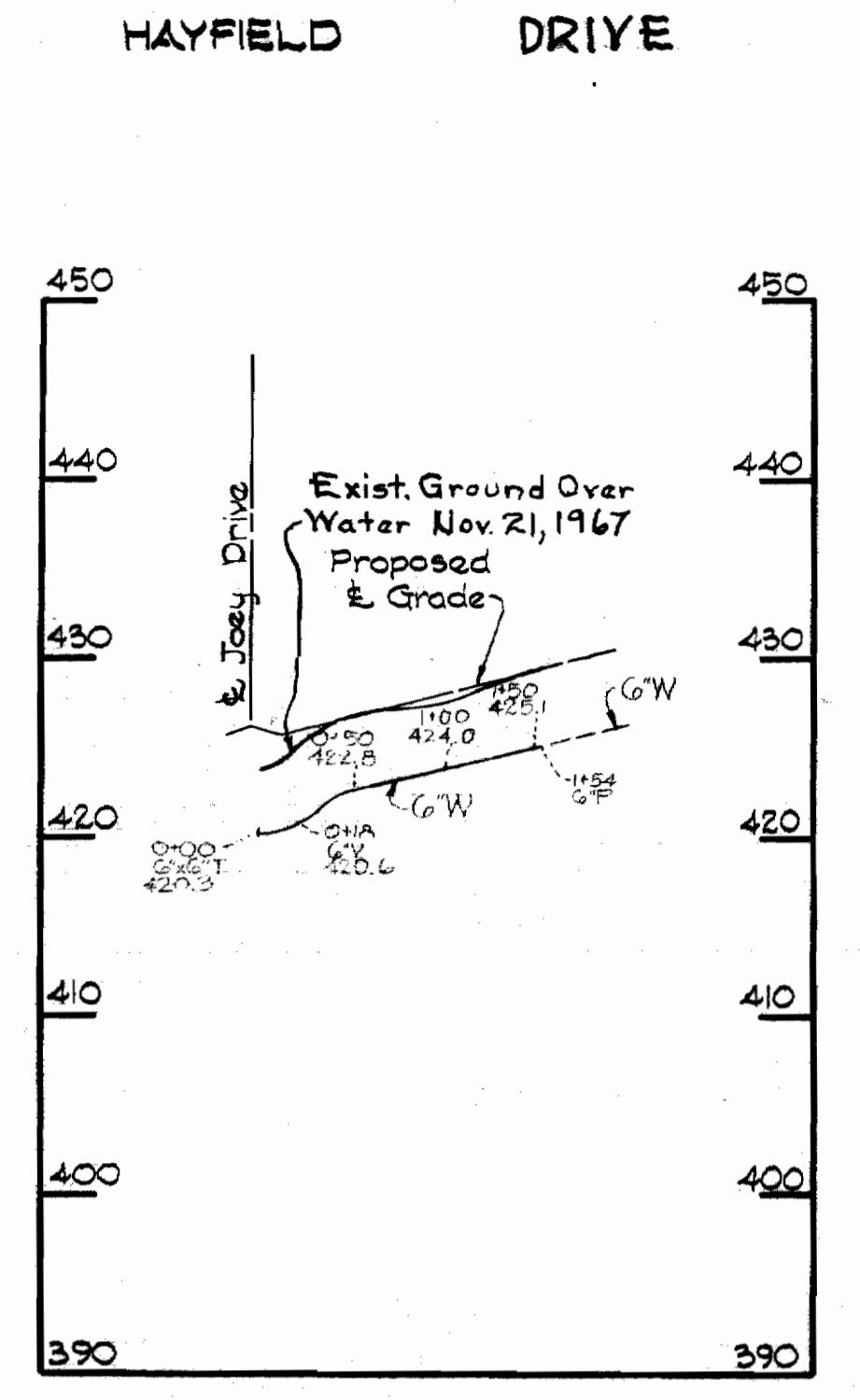
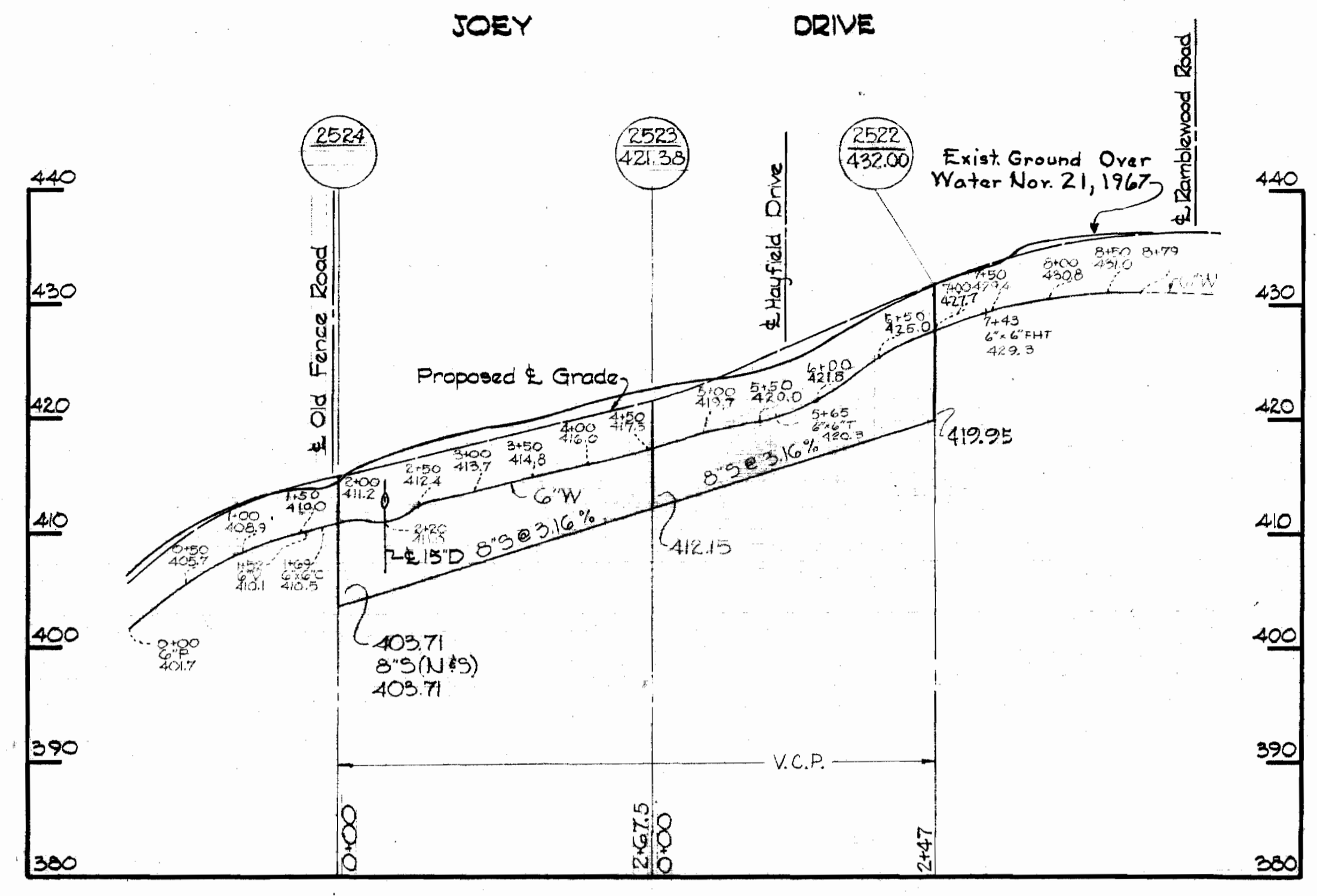
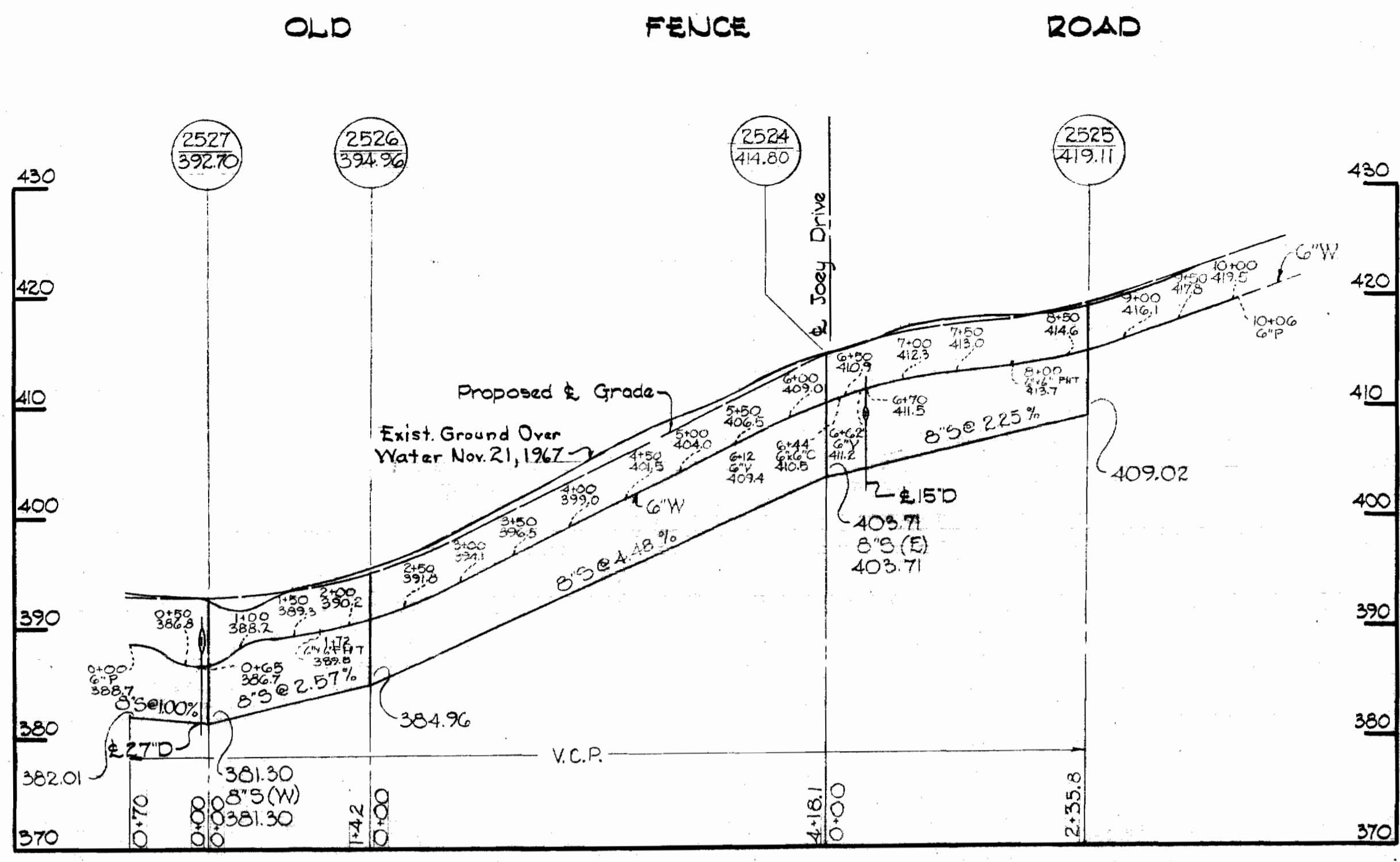
STATE OF MARYLAND  
KENNETH A. MCCORD  
1974  
REGISTERED PROFESSIONAL ENGINEER & LAND SURVEYOR  
*Kenneth A. McCord*

WHITMAN, REQUARDT & ASSOCIATES ENGINEERS 1304 ST. PAUL ST. BALTIMORE, MARYLAND	HOWARD COUNTY METROPOLITAN COMMISSION DATE: 11-15-67 W. O. Salant CHIEF ENGINEER	CONTRACT NO. 216 W&S	PLAN OF WATER AND SEWER MAINS	ELECTION DISTRICT ELLICOTT CITY NO. 2	DRAWING NO. 1 OF 2 SCALE AS SHOWN	Chatham Section 10 Contract N.P. 216 W&S
---	---	----------------------	----------------------------------	--	--------------------------------------	---

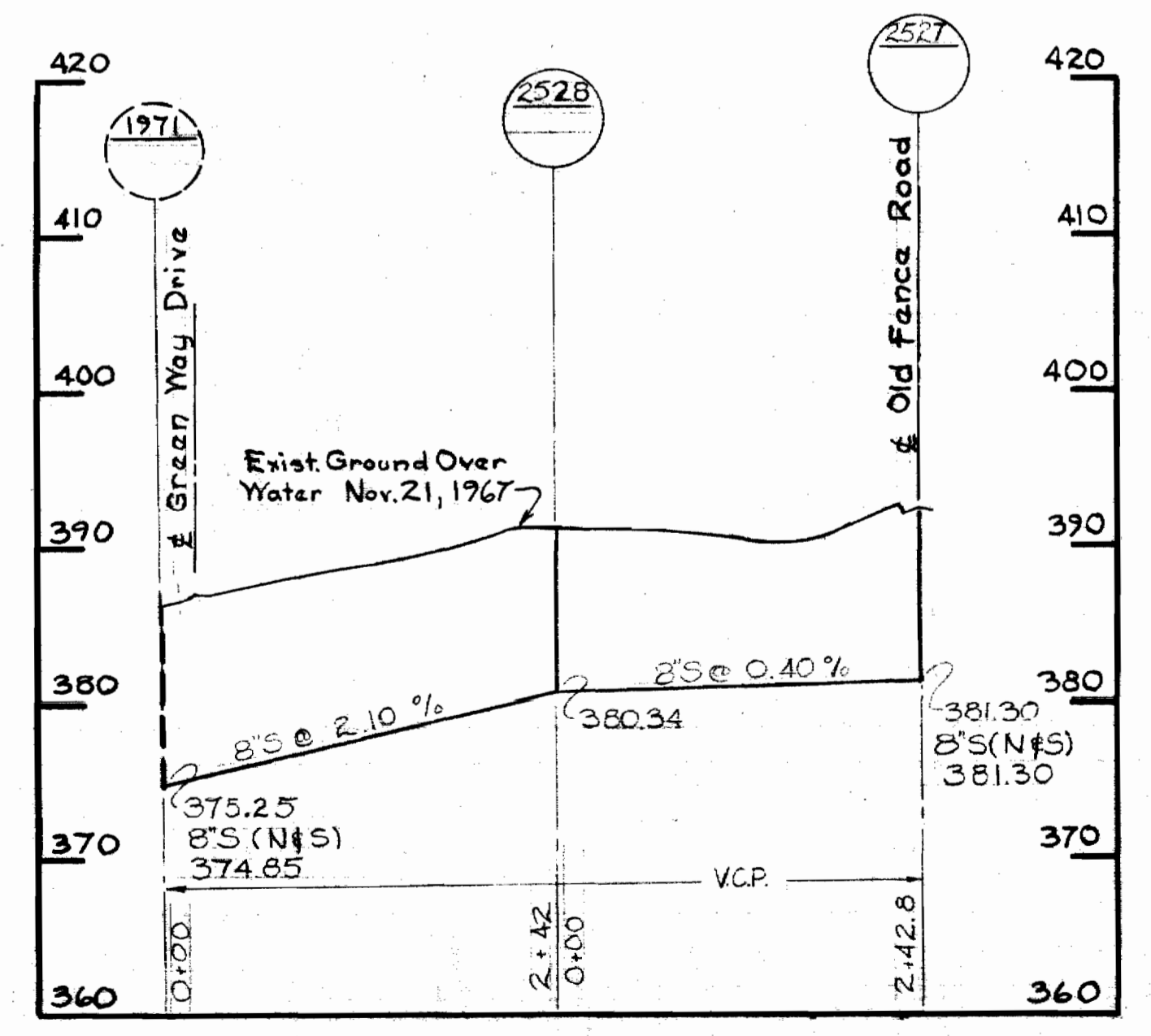
W. O. 5129-2

AS BUILT

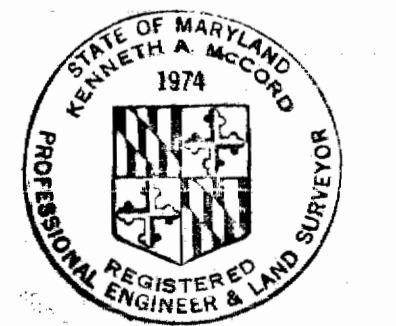
WS 216-WS/1



**OUTFALL**



NOTE:  
 All 8" Sewer is V.C.P.  
 All 6" Water is cast iron with Tytan Joint  
 All MHS are precast



*Kenneth A. McLeod*  
 REGISTERED PROFESSIONAL ENGINEER & LAND SURVEYOR

12-22-67	Revised location of MH 2522
No.	Date
	Revision

Chatham Section 10  
 Contract U# 216-W65

<b>WHITMAN, REARDT &amp; ASSOCIATES</b> ENGINEERS 1304 ST. PAUL ST. BALTIMORE, MARYLAND	<b>HOWARD COUNTY METROPOLITAN COMMISSION</b> DATE: 11-15-67 W. O. PILLER CHIEF ENGINEER	<b>CONTRACT NO. 216 W65</b>	<b>PROFILES OF WATER AND SEWER MAINS</b>	<b>ELECTION DISTRICT ELLICOTT CITY NO. 2</b>	<b>DRAWING NO. 2</b>	<b>SCALE V-1"=10'</b>
					<b>OF 2</b>	<b>H-1"=100'</b>