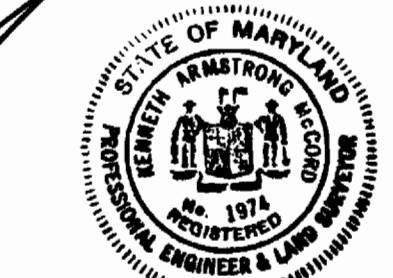


VICINITY MAP
Scale: 1" = 2390'



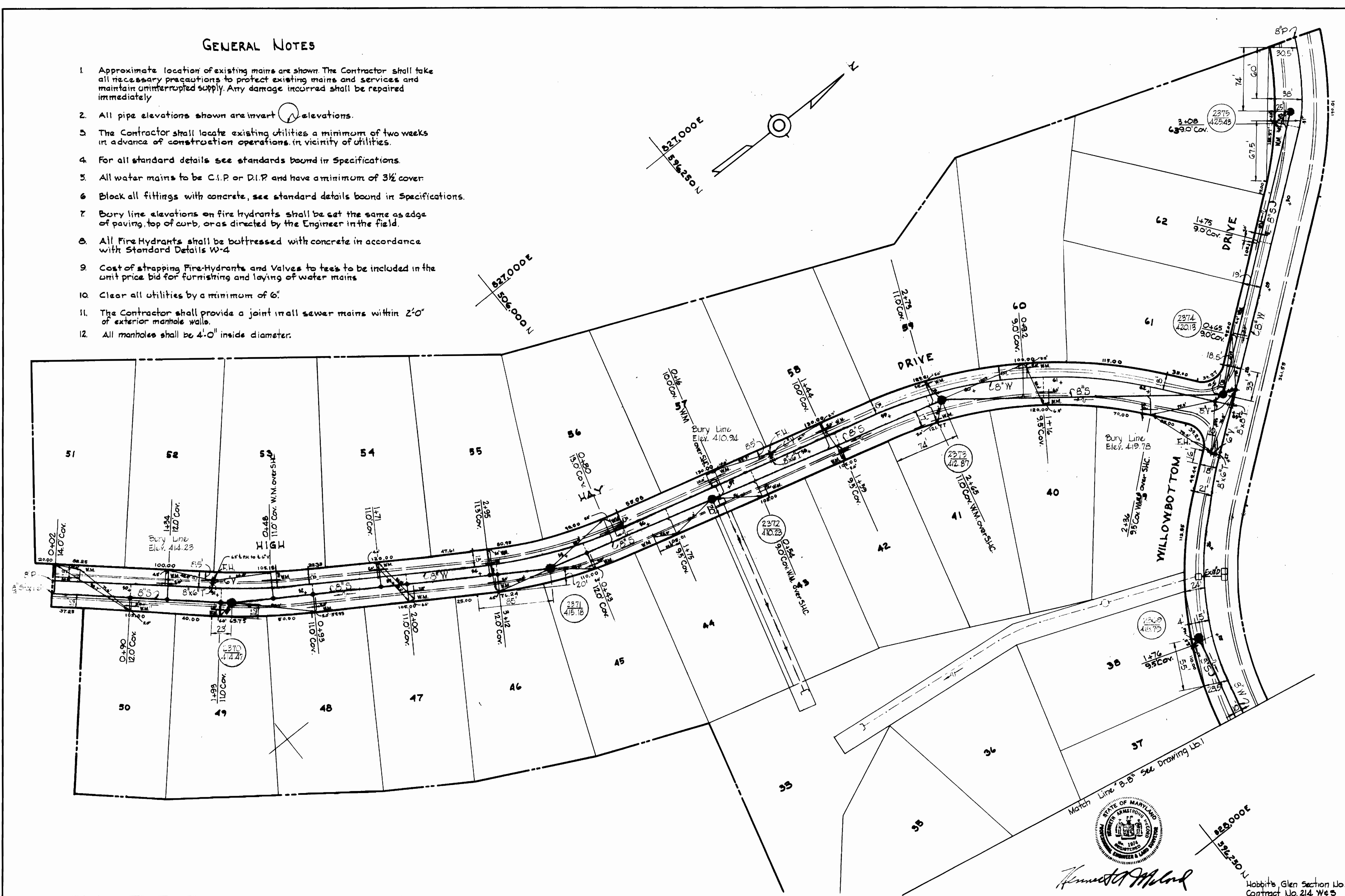
Kenneth J. McLeod

Hobbits Glen Section No. 1
Contract No. 214 W + S

WHITMAN, REQUARDT & ASSOCIATES ENGINEERS 1304 ST. PAUL ST. BALTIMORE, MARYLAND	HOWARD COUNTY METROPOLITAN COMMISSION DATE: 10-17-63 <i>W. O. Lillard</i> CHIEF ENGINEER	CONTRACT NO. 214 W + S	PLAN OF WATER & SEWER MAINS	COLUMBIA VILLAGE OF HARPER'S CHOICE ELECTION DISTRICT-CLARKSVILLE No. 5	DRAWING NO. 1 OF 3 SCALE 1" = 50' 896-476 897-477 897-874
---	---	------------------------	--------------------------------	---	---

GENERAL NOTES

1. Approximate location of existing mains are shown. The Contractor shall take all necessary precautions to protect existing mains and services and maintain uninterrupted supply. Any damage incurred shall be repaired immediately.
2. All pipe elevations shown are invert ∇ elevations.
3. The Contractor shall locate existing utilities a minimum of two weeks in advance of construction operations in vicinity of utilities.
4. For all standard details see standards bound in Specifications.
5. All water mains to be C.I.P. or D.I.P. and have a minimum of 3½ cover.
6. Block all fittings with concrete, see standard details bound in Specifications.
7. Bury line elevations on fire hydrants shall be set the same as edge of paving, top of curb, or as directed by the Engineer in the field.
8. All Fire Hydrants shall be buttressed with concrete in accordance with Standard Details W-4.
9. Cost of strapping Fire-Hydrants and Valves to tees to be included in the unit price bid for furnishing and laying of water mains.
10. Clear all utilities by a minimum of 6'.
11. The Contractor shall provide a joint in all sewer mains within 2'-0" of exterior manhole walls.
12. All manholes shall be 4'-0" inside diameter.



WHITMAN, REQUARDT & ASSOCIATES
ENGINEERS
1304 ST. PAUL ST.
BALTIMORE, MARYLAND

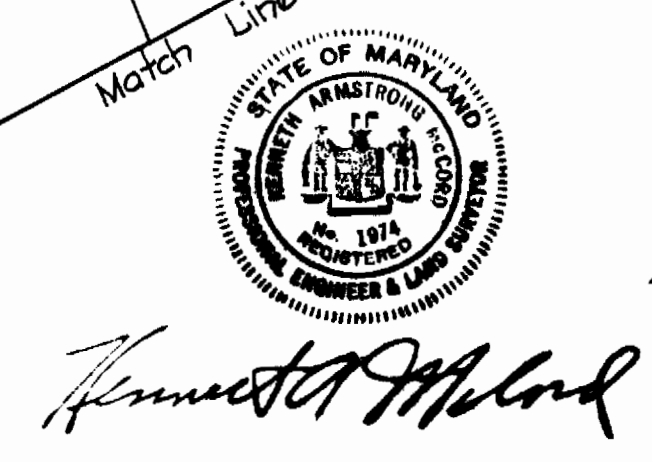
HOWARD COUNTY METROPOLITAN COMMISSION
10-17-67 *W.O. F. [Signature]*
DATE CHIEF ENGINEER

CONTRACT NO. 214 W&S

PLAN OF
WATER & SEWER MAINS

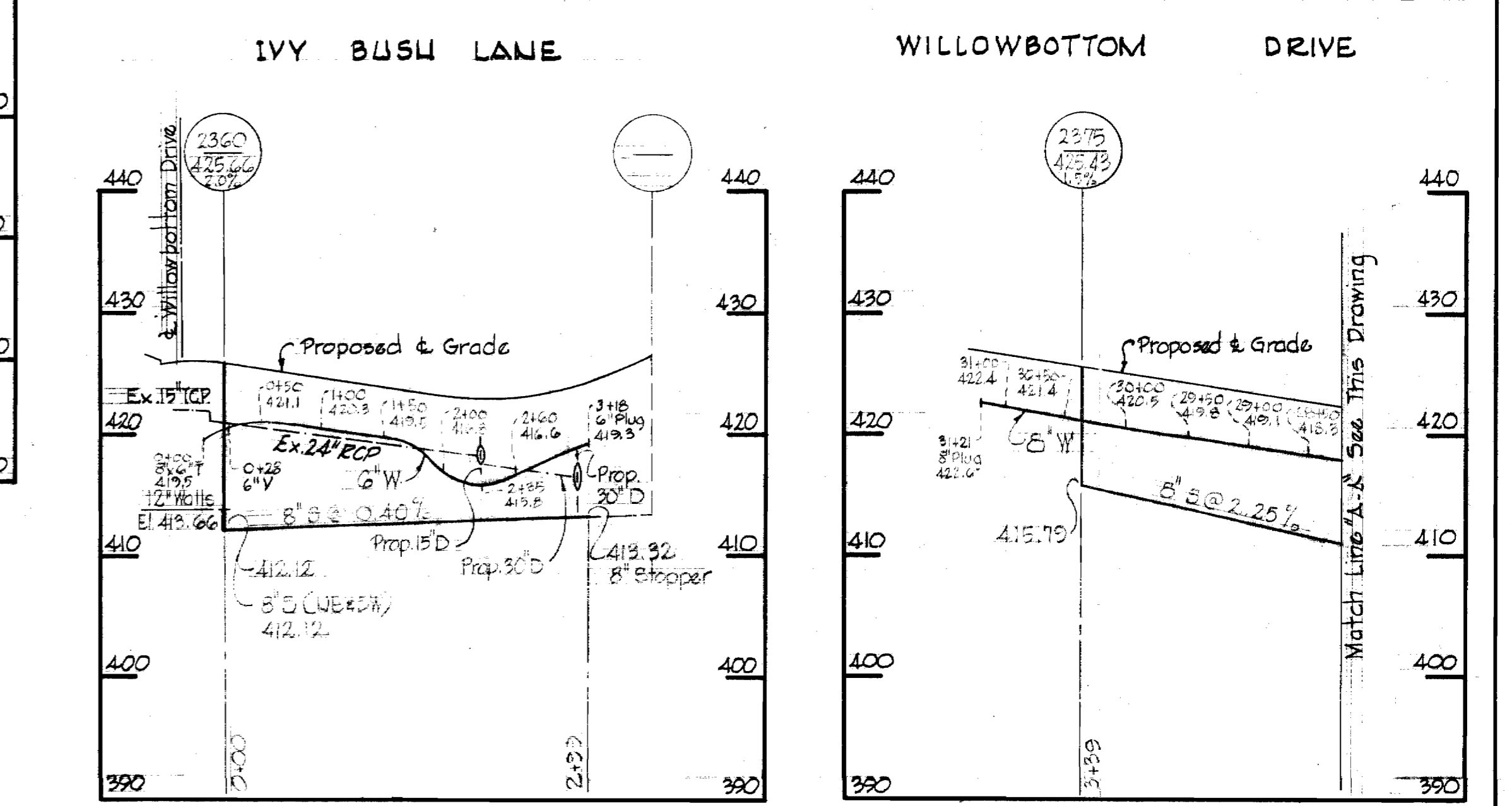
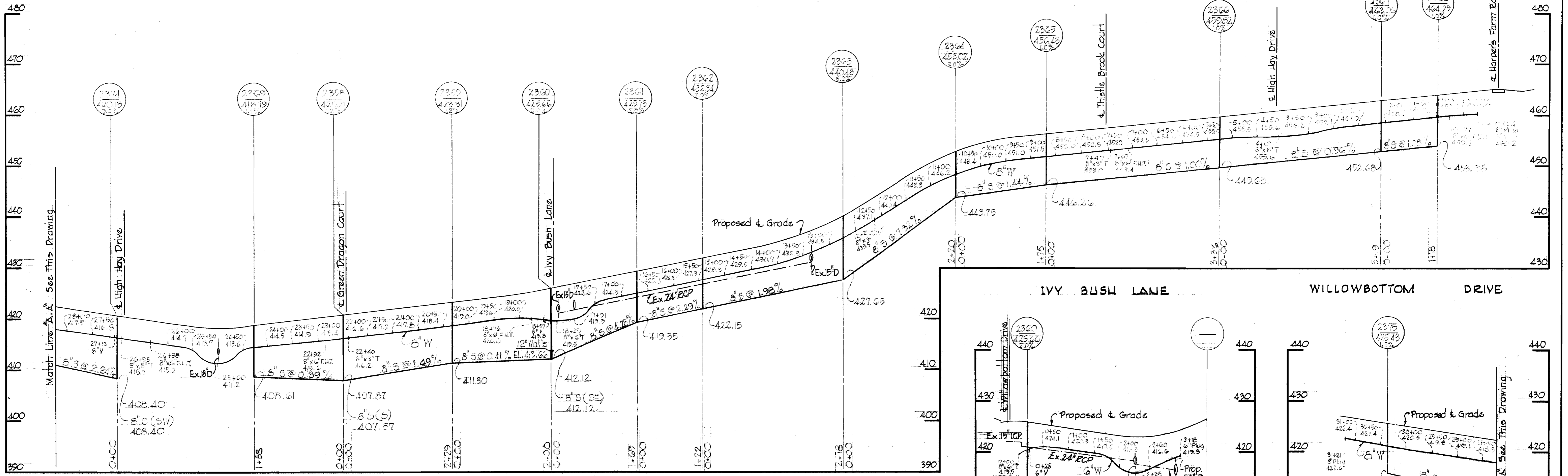
COLUMBIA
VILLAGE OF HARPER'S CHOICE
ELECTION DISTRICT-CLARKSVILLE No.5

DRAWING NO. 2
OF 3
SCALE 1" = 50'



Hobbits Glen Section No. 1
Contract No. 214 W&S

WILLOWBOTTOM DRIVE

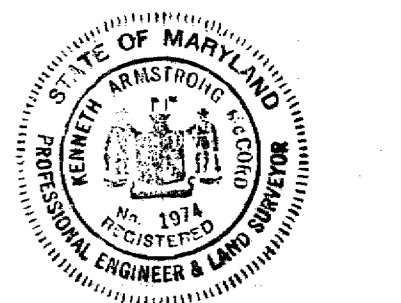
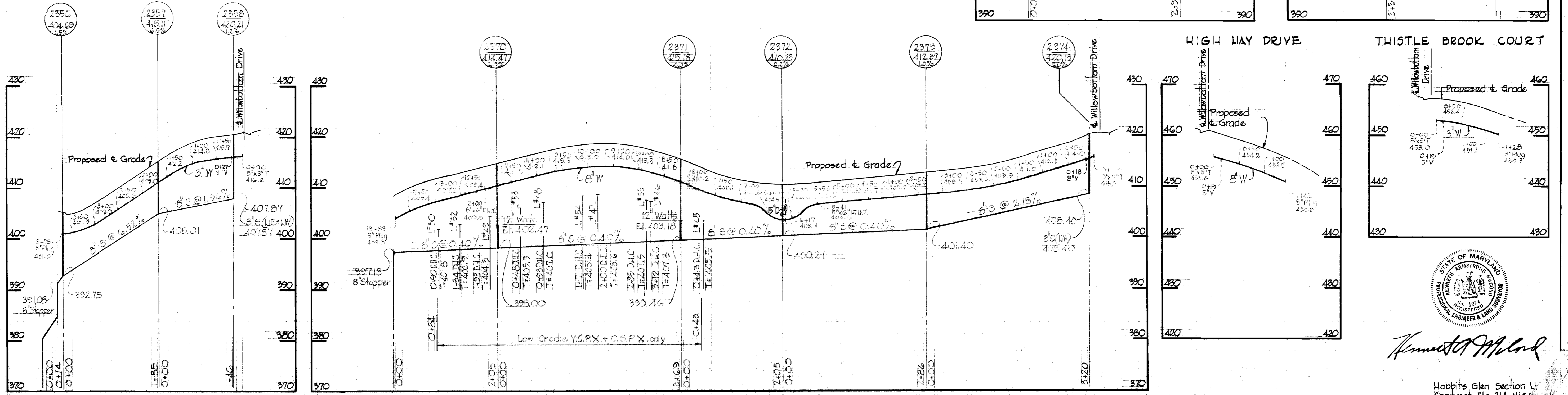


GREEN DRAGON COURT

HIGH HAY DRIVE

HIGH WAY DRIVE

THISTLE BROOK COURT



Kenneth A. Madlock

Hobbits Glen Section 1
Contract No. 214 W&S

WHITMAN, REQUARDT & ASSOCIATES
ENGINEERS
1304 ST. PAUL ST.
BALTIMORE, MARYLAND

HOWARD COUNTY METROPOLITAN COMMISSION
DATE 10-17-67 *W.O. Gilbert*
CHIEF ENGINEER

CONTRACT NO. 214 W&S

PROFILES OF
WATER & SEWER MAINS

COLUMBIA
VILLAGE OF HARPER'S CHOICE
ELECTION DISTRICT-CLARKSVILLE No.5

DRAWING NO. 3 OF 3
SCALE H:1"=100' V:1"=10'

19 OCTOBER 1967

WS 214-W&S/3