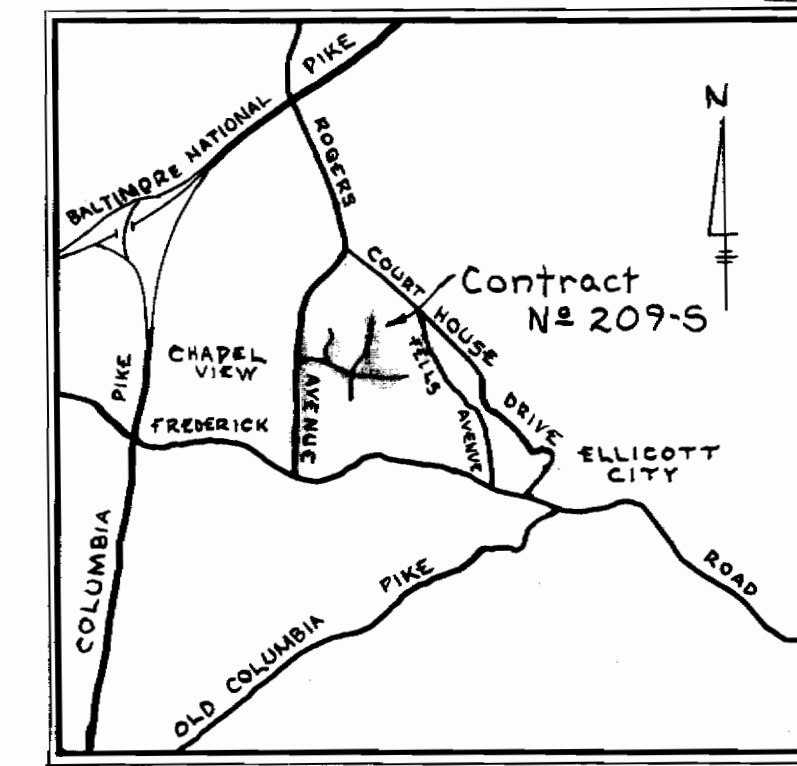


WR#A BM#25 Elev 262.76
R.R. spike in base of pole #430
S side of Route #99 Frederick
Road.

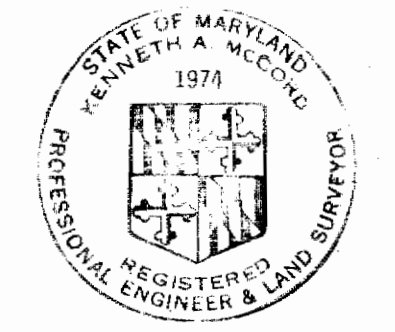
WR#A BM#24 Elev 297.41
R.R. spike in base of pole #20399
E side Route #99, 0.2 mile N. of
Frederick Road.



VICINITY MAP
Scale: 1" = 1/2 mile
GENERAL NOTES

1. Approximate locations of existing mains are shown. The Contractor shall take all necessary precautions to protect existing mains and services and maintain uninterrupted supply. Any damage incurred shall be repaired immediately.
2. All pipe elevations shown are invert elevations.
3. The Contractor shall locate existing utilities a minimum of two weeks in advance of construction operations in vicinity of utilities.
4. For all standard details see standards bound in Specifications.
5. Clear all utilities by a minimum of 6', clear all poles by 2'-0" minimum or tunnel as required.
6. The Contractor shall provide a joint in all sewer mains within 2'-0" of exterior manhole walls.
7. All manholes shall be 4'-0" inside diameter.

WR#A BM#23 Elev 328.13
R.R. spike in root of 24' beech E side
of Route #99, 0.4 mile N. of Frederick
Road, in front of white shingle house



Kenneth A. McLeod

Contract No 209-S

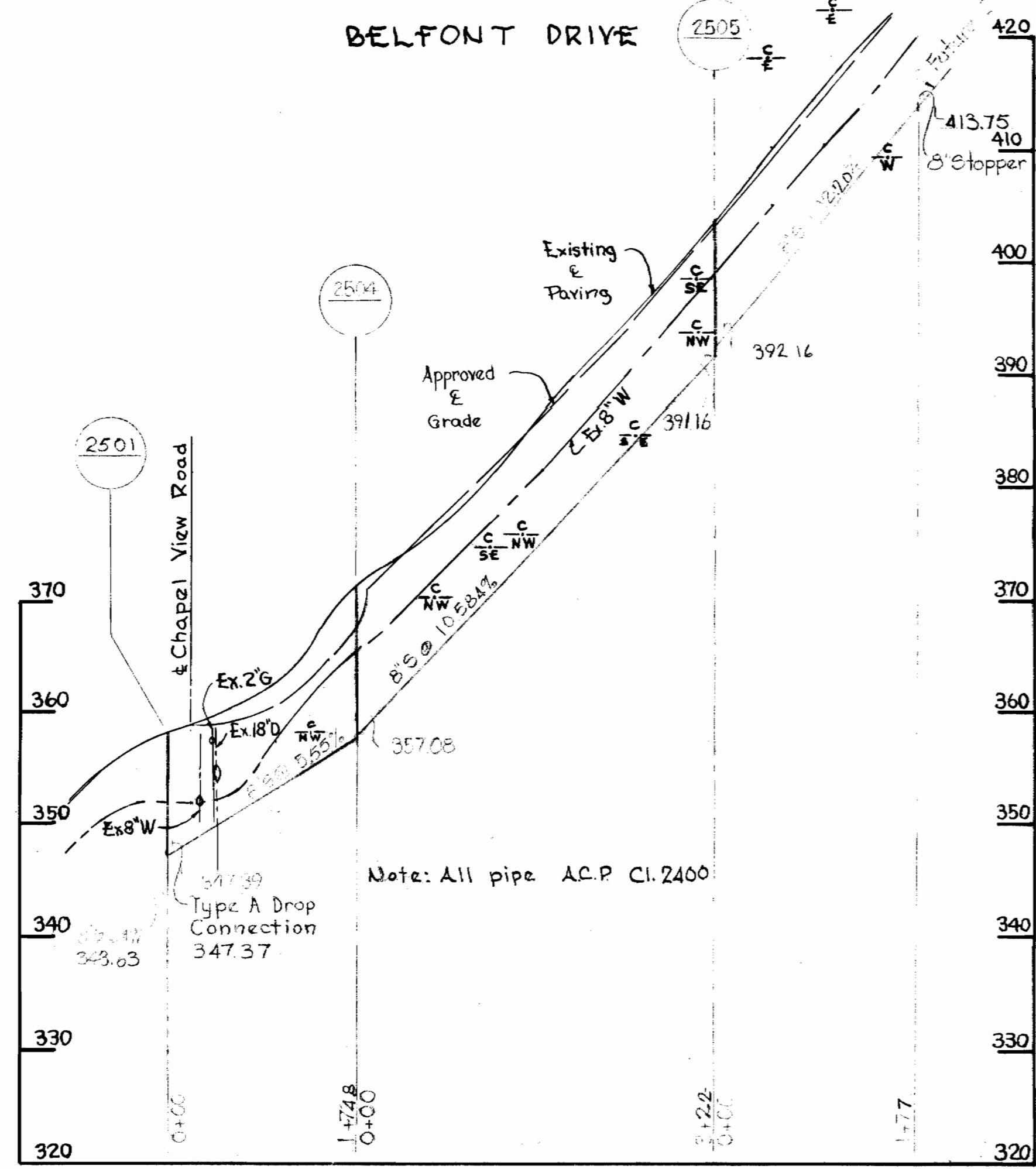
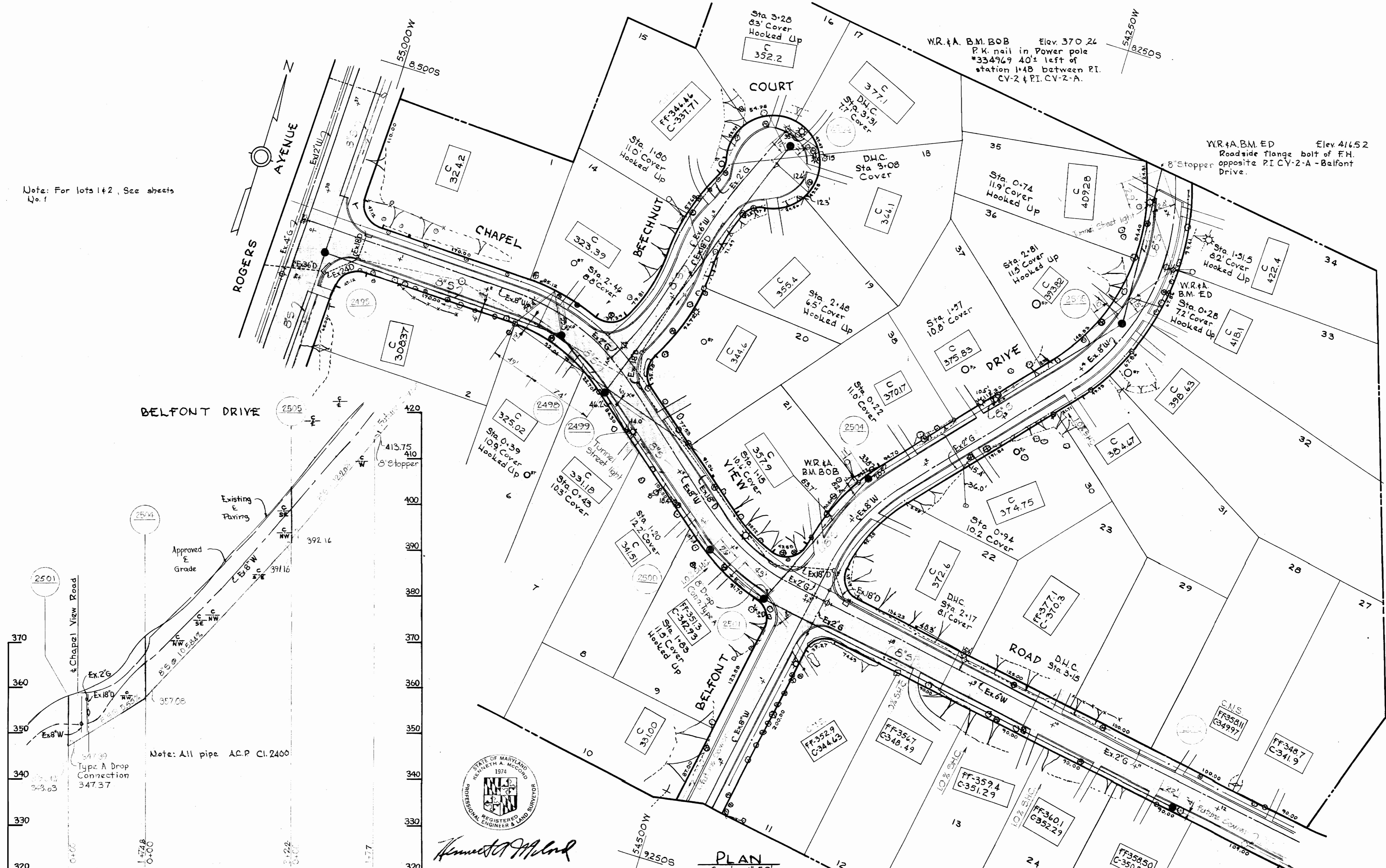
WHITMAN, REQUARDT & ASSOCIATES ENGINEERS 1304 ST. PAUL ST. BALTIMORE, MARYLAND	HOWARD COUNTY METROPOLITAN COMMISSION DATE: 11-15-67 <i>W. O. Subert</i> CHIEF ENGINEER	CONTRACT NO. 209-S	PLAN OF SEWER MAINS	ELECTION DISTRICT ELLICOTT CITY NO.2	DRAWING NO. 1 OF 3 SCALE AS SHOWN
----------------------------------------------------------------------------------------------------	---------------------------------------------------------------------------------------------------------	---------------------------	----------------------------	---------------------------------------------	----------------------------------------------------

W. O. 5839-2

AS BUILT AUGUST 10, 1967
FB. 2161
FB. 2157

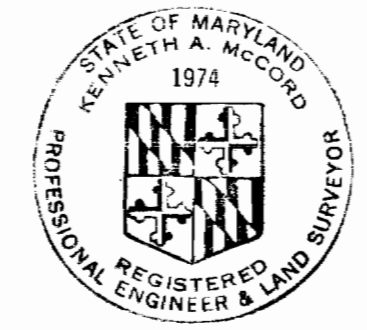
WS 209-S/1

Note: For lots 1 & 2, See sheets No. 1



Note: All pipe A.C.P. C.I. 2400

Scale: H: 1" = 100'
V: 1" = 10'



Kenneth A. McLeod

PLAN
Scale: 1" = 50'

WS 209-S/2

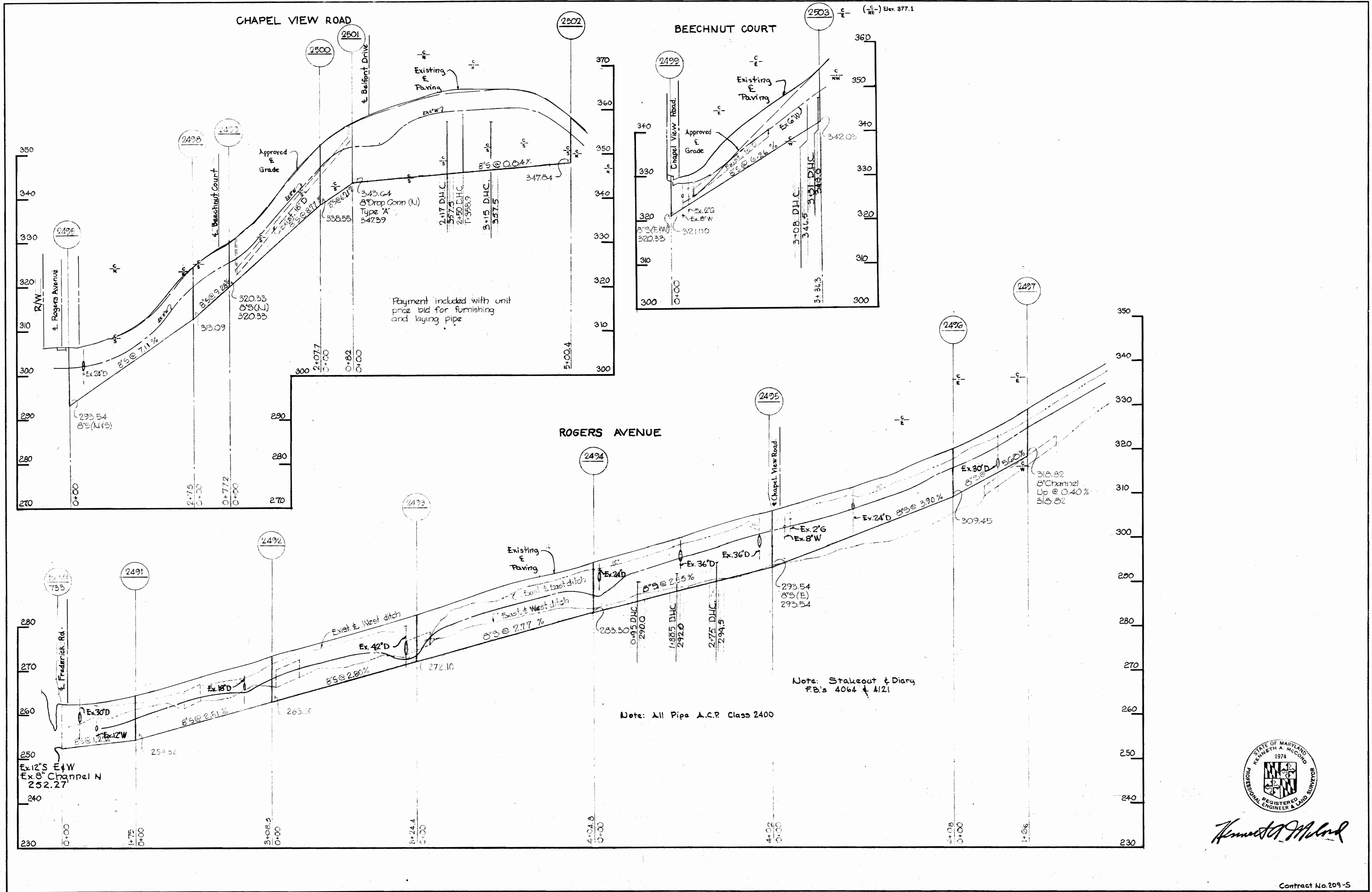
WHITMAN, REQUARDT & ASSOCIATES ENGINEERS 1304 ST. PAUL ST. BALTIMORE, MARYLAND	HOWARD COUNTY METROPOLITAN COMMISSION DATE 11-15-67 <i>W. O. Fibert</i> CHIEF ENGINEER	CONTRACT NO. 209-S	PLAN AND PROFILE OF SEWER MAINS	ELECTION DISTRICT ELLICOTT CITY NO. 2	DRAWING NO. 2 OF 3 SCALE AS SHOWN
-----------------------------------------------------------------------------------------	-------------------------------------------------------------------------------------------------	--------------------	------------------------------------	------------------------------------------	--------------------------------------

W. O. 5839-2

AS BUILT AUGUST 1962
 FEB. 21/61
 F.B. 3967

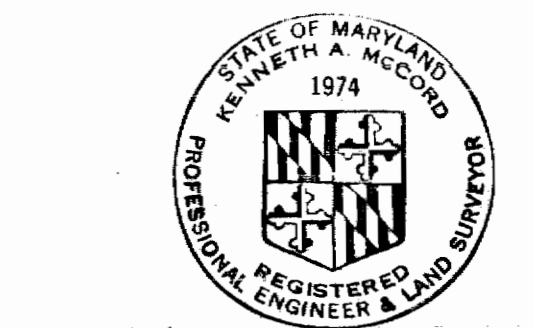
SUSPENSE

SUSPENSE



Note: Stakeout & Diary FB's 4064 & 4121
 Note: All Pipe A.C.P. Class 2400

Payment included with unit price bid for furnishing and laying pipe.



Kenneth A. McGlothlin

Contract No. 209-S

WHITMAN, REQUARDT & ASSOCIATES
 ENGINEERS
 1304 ST. PAUL ST.
 BALTIMORE, MARYLAND

HOWARD COUNTY METROPOLITAN COMMISSION
 11-18-67 DATE
W. P. Labat CHIEF ENGINEER

CONTRACT NO. 209-S

PROFILES OF SEWER MAINS

ELECTION DISTRICT ELLICOTT CITY NO.2

DRAWING NO. 3 OF 3 SCALE H-1"=100' V-1"=10'

WS 209-5/3