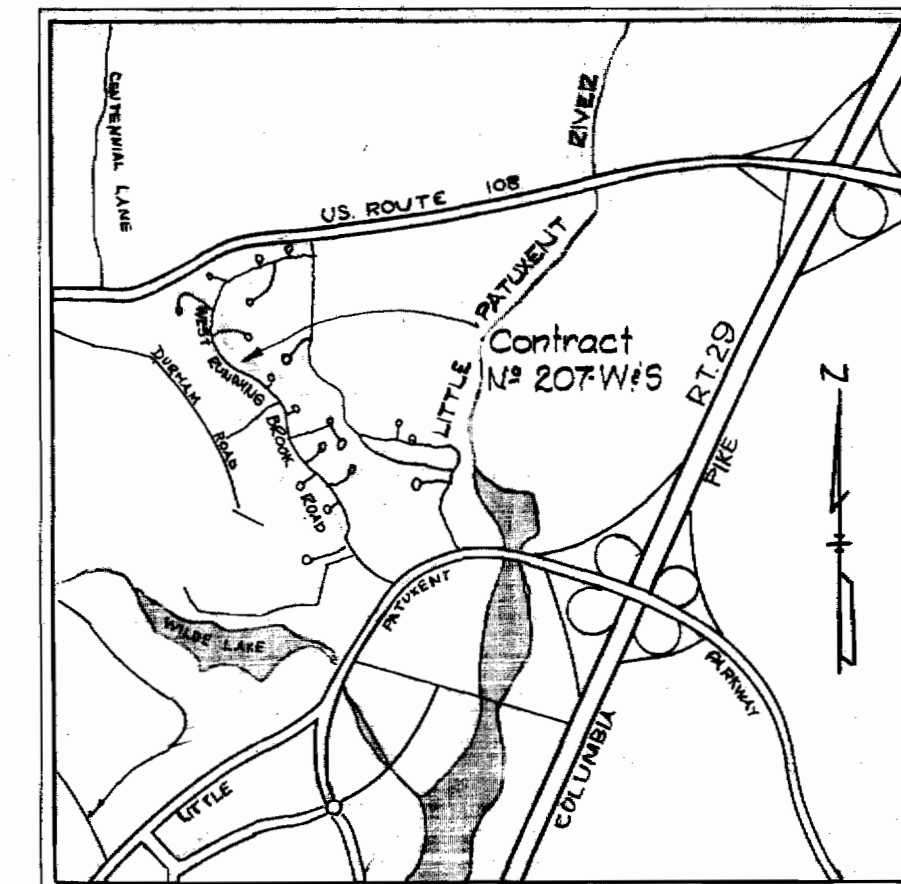


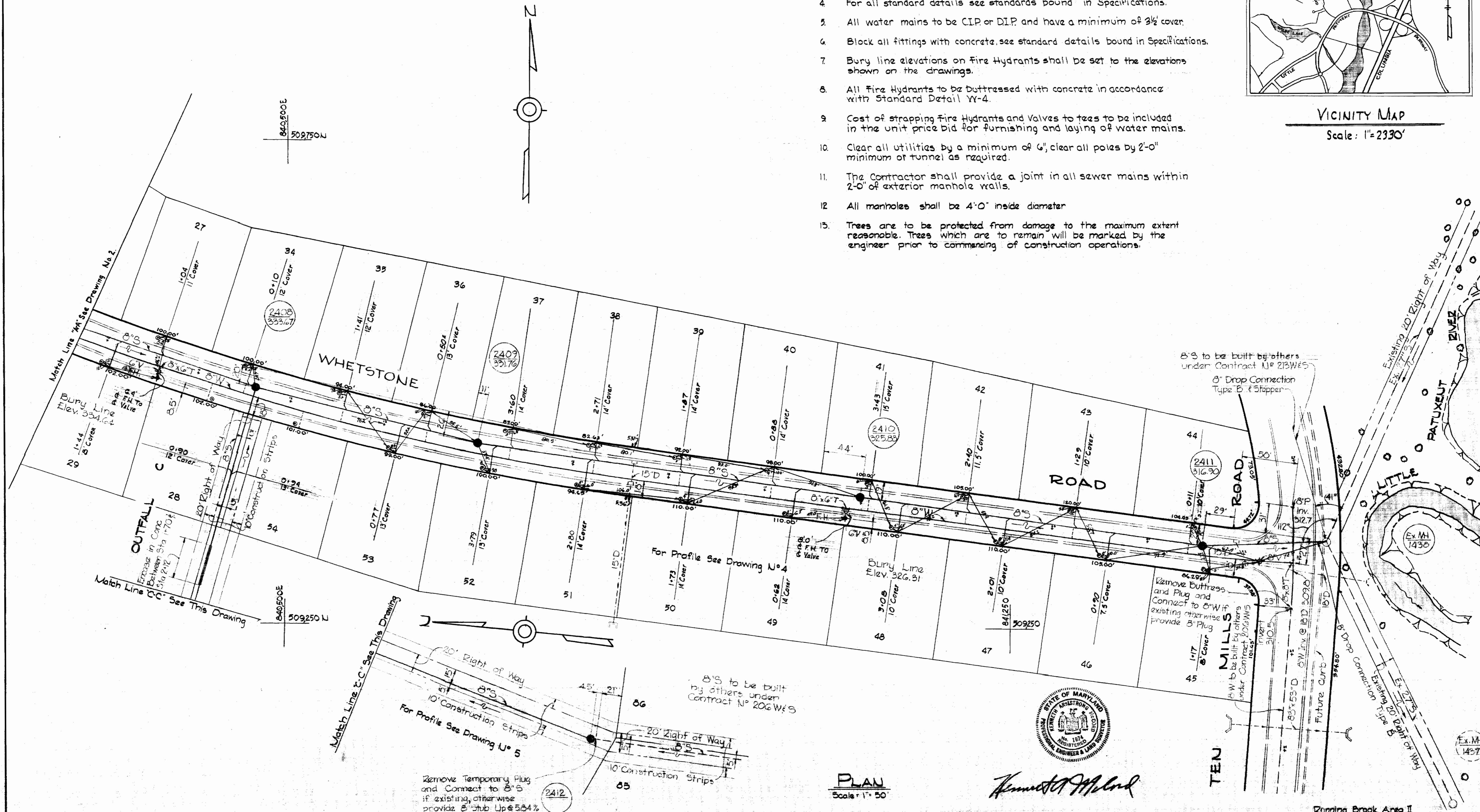
**GENERAL NOTES**

1. Approximate location of existing mains are shown. The Contractor shall take all necessary precautions to protect existing mains and services and maintain uninterrupted supply. Any damage incurred shall be repaired immediately.
2. All pipe elevations shown are invert  $\ominus$  elevations.
3. The Contractor shall locate existing utilities a minimum of two weeks in advance of construction operation in vicinity of utilities.
4. For all standard details see standards bound in Specifications.
5. All water mains to be C.I.P. or D.I.P. and have a minimum of 3 1/2' cover.
6. Block all fittings with concrete, see standard details bound in Specifications.
7. Bury line elevations on Fire Hydrants shall be set to the elevations shown on the drawings.
8. All Fire Hydrants to be buttressed with concrete in accordance with Standard Detail W-4.
9. Cost of strapping Fire Hydrants and Valves to tees to be included in the unit price bid for furnishing and laying of water mains.
10. Clear all utilities by a minimum of 6", clear all poles by 2'-0" minimum or tunnel as required.
11. The Contractor shall provide a joint in all sewer mains within 2'-0" of exterior manhole walls.
12. All manholes shall be 4'-0" inside diameter.
13. Trees are to be protected from damage to the maximum extent reasonable. Trees which are to remain will be marked by the engineer prior to commencing of construction operations.



VICINITY MAP

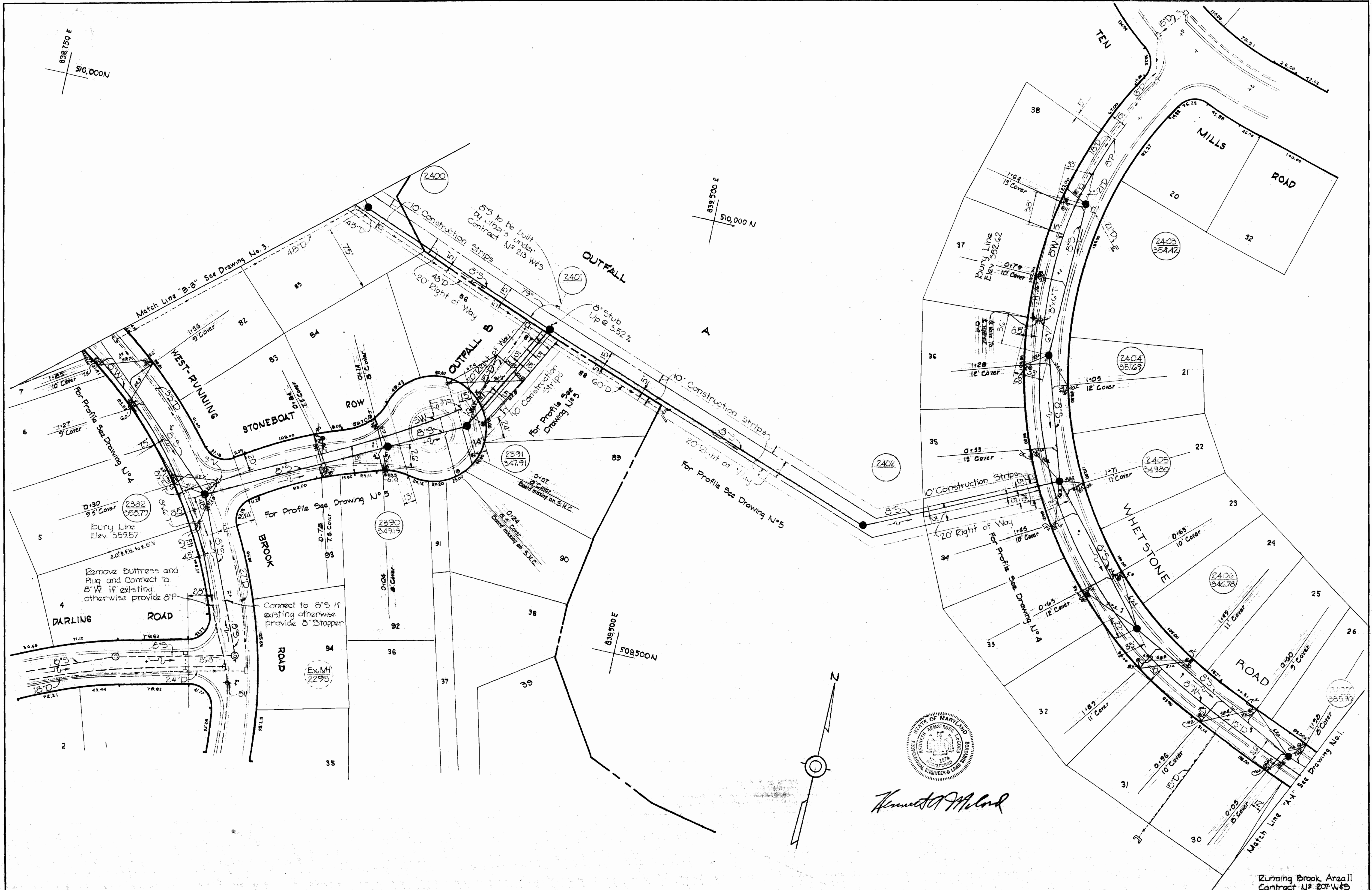
Scale: 1"=2330'



*Howard M. Melrod*

PLAN  
Scale: 1"=50'

H.G. ELEV 567 <b>WHITMAN, REQUARDT &amp; ASSOCIATES</b> ENGINEERS 1304 ST. PAUL ST. BALTIMORE, MARYLAND	<b>HOWARD COUNTY METROPOLITAN COMMISSION</b> 10-10-67 DATE <i>W. O. Libby</i> CHIEF ENGINEER	CONTRACT NO. 207 W&S	PLAN OF WATER & SEWER MAINS	COLUMBIA VILLAGE OF WILDE LAKE ELECTION DISTRICT-CLARKSVILLE No.5	DRAWING NO. 1 OF 5 SCALE AS SHOWN
---	--	----------------------	--------------------------------	---	--------------------------------------



*Kenneth A. Alford*

WHITMAN, REQUARDT & ASSOCIATES ENGINEERS 1304 ST. PAUL ST. BALTIMORE, MARYLAND	HOWARD COUNTY METROPOLITAN COMMISSION 10-10-67 <i>W. O. P. [Signature]</i> DATE CHIEF ENGINEER	CONTRACT NO. 207 WBS	PLAN OF WATER & SEWER MAINS	COLUMBIA VILLAGE OF WILDE LAKE ELECTION DISTRICT-CLARKSVILLE No.5	DRAWING NO. 2 OF 5 SCALE 1"=50' AS BUILT JUNE 14, 1968
---	--	----------------------	--------------------------------	---	--

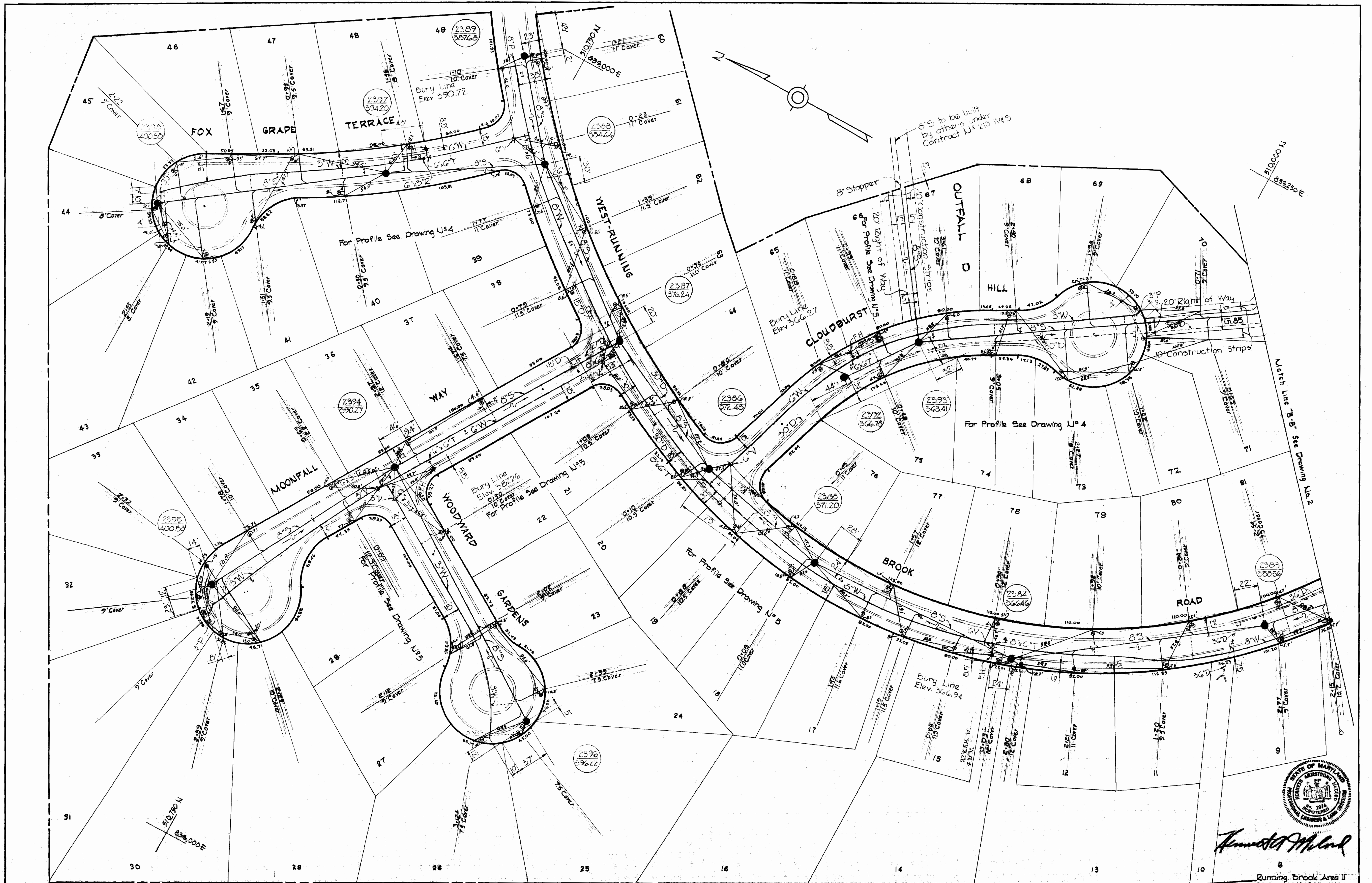
WS  
207-W512

WS 207-WS/3

10/10/67

10/10/67

10/10/67

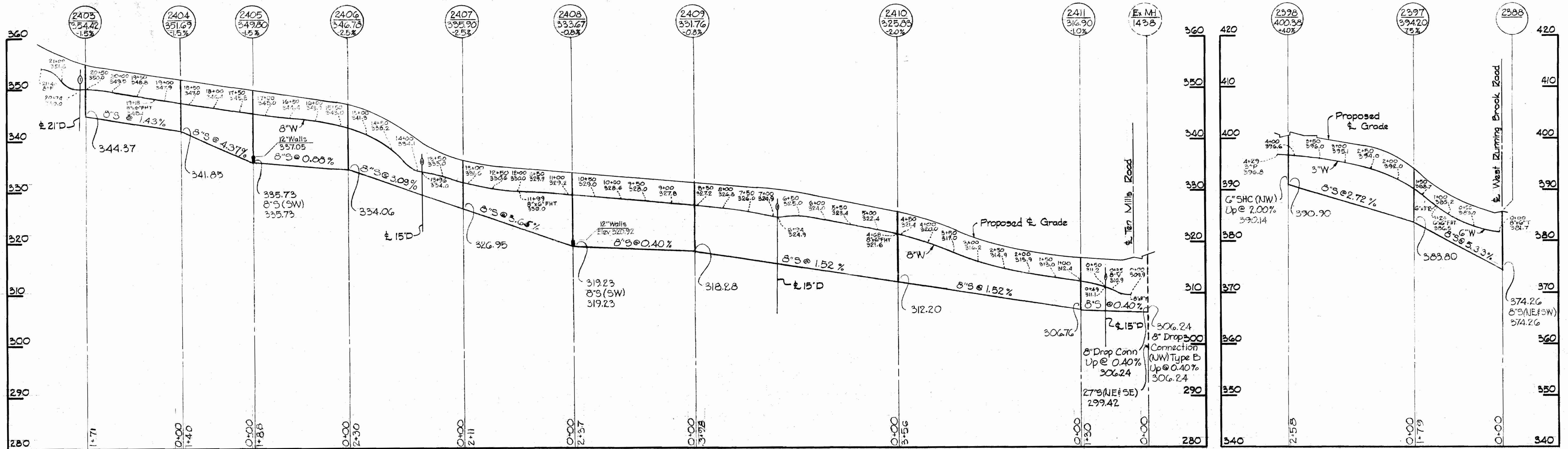


*Kenneth W. Clark*  
 Running Brook Area II  
 Contract No. 207 W&S

WHITMAN, REQUARDT & ASSOCIATES ENGINEERS 1304 ST. PAUL ST. BALTIMORE, MARYLAND	HOWARD COUNTY METROPOLITAN COMMISSION DATE <u>10-10-67</u> <i>W. O. Clark</i> CHIEF ENGINEER	CONTRACT NO. <u>207 W&amp;S</u>	PLAN OF WATER & SEWER MAINS	COLUMBIA VILLAGE OF WILDE LAKE ELECTION DISTRICT-CLARKVILLE No. 5	DRAWING NO. <u>3</u> OF <u>5</u> SCALE 1"=50' 50'-178" 50'-180" 50'-180" 50'-180"
---	---	---------------------------------	--------------------------------	---	---

WHETSTONE ROAD  
For Plan See Drawing N# 1 & 2

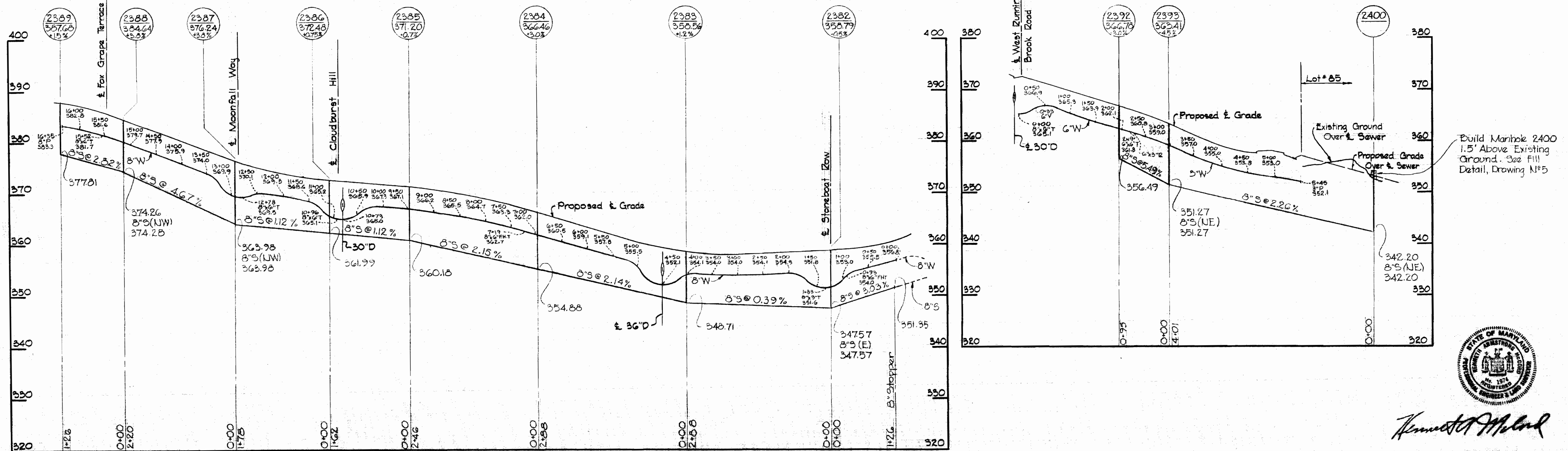
FOX GRAPE TERRACE  
For Plan See Drawing U# 3



ALL SEWER PIPE - A.C. CLASS 2400  
ALL WATER MAINS - CAST IRON

WEST RUNNING BROOK ROAD  
For Plan See Drawing N# 2 & 3

CLOUDBURST HILL  
For Plan See Drawing N# 3



*Howard C. Meland*

Running Brook Area II  
Contract N# 207W#3

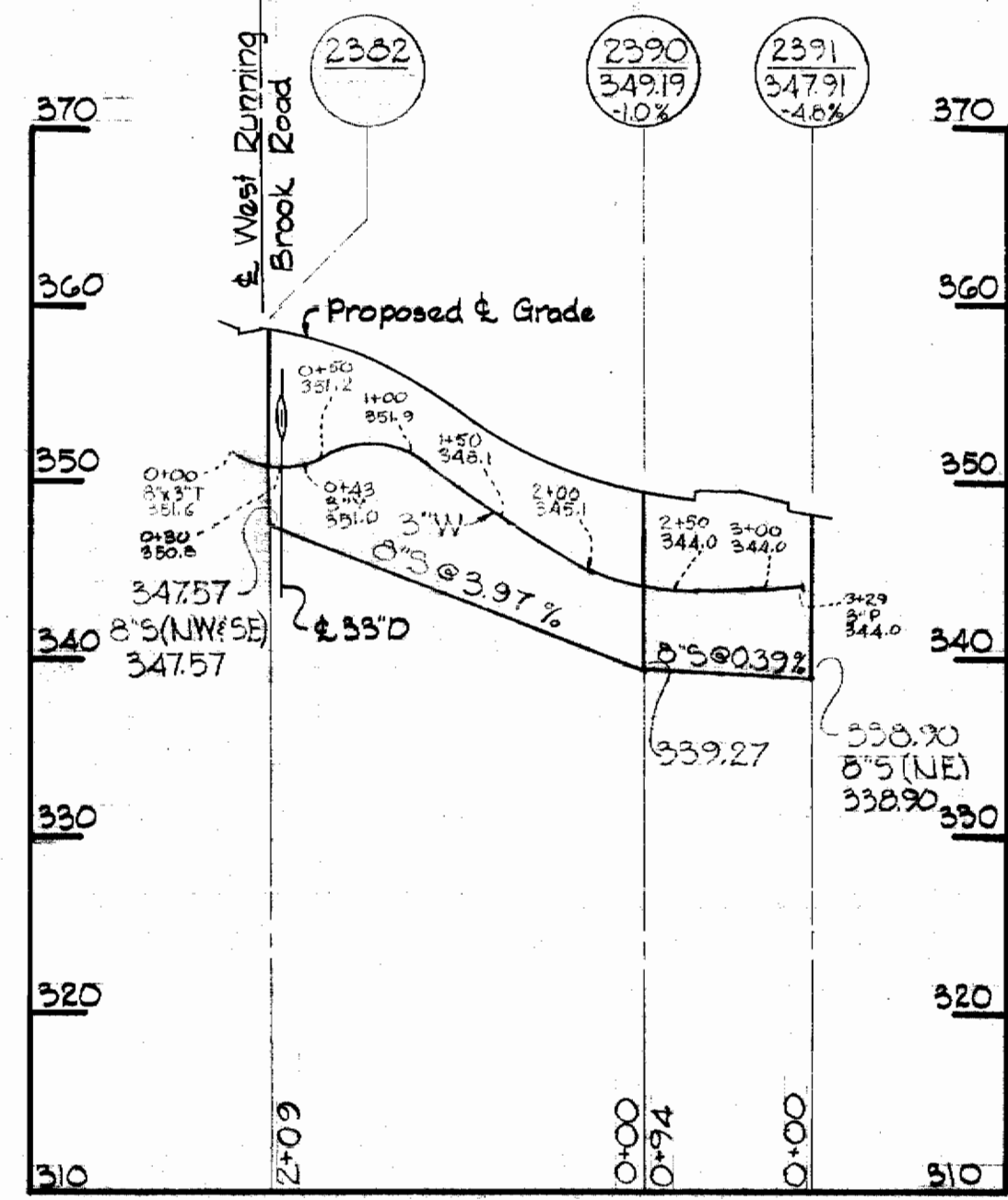
WHITMAN, REQUARDT & ASSOCIATES ENGINEERS 1304 ST. PAUL ST. BALTIMORE, MARYLAND	HOWARD COUNTY METROPOLITAN COMMISSION DATE 10-10-67 <i>W. O. Meland</i> CHIEF ENGINEER	CONTRACT NO. 207 WBS	PROFILES OF WATER & SEWER MAINS	COLUMBIA VILLAGE OF WILDE LAKE ELECTION DISTRICT-CLARKSVILLE No.5	DRAWING NO. 4 OF 5 SCALE V=1"=10' H=1"=100' AS BUILT JUNE 14, 1968
---	---	----------------------	------------------------------------	---	--

WS 207-WS/4

SUSPENSE

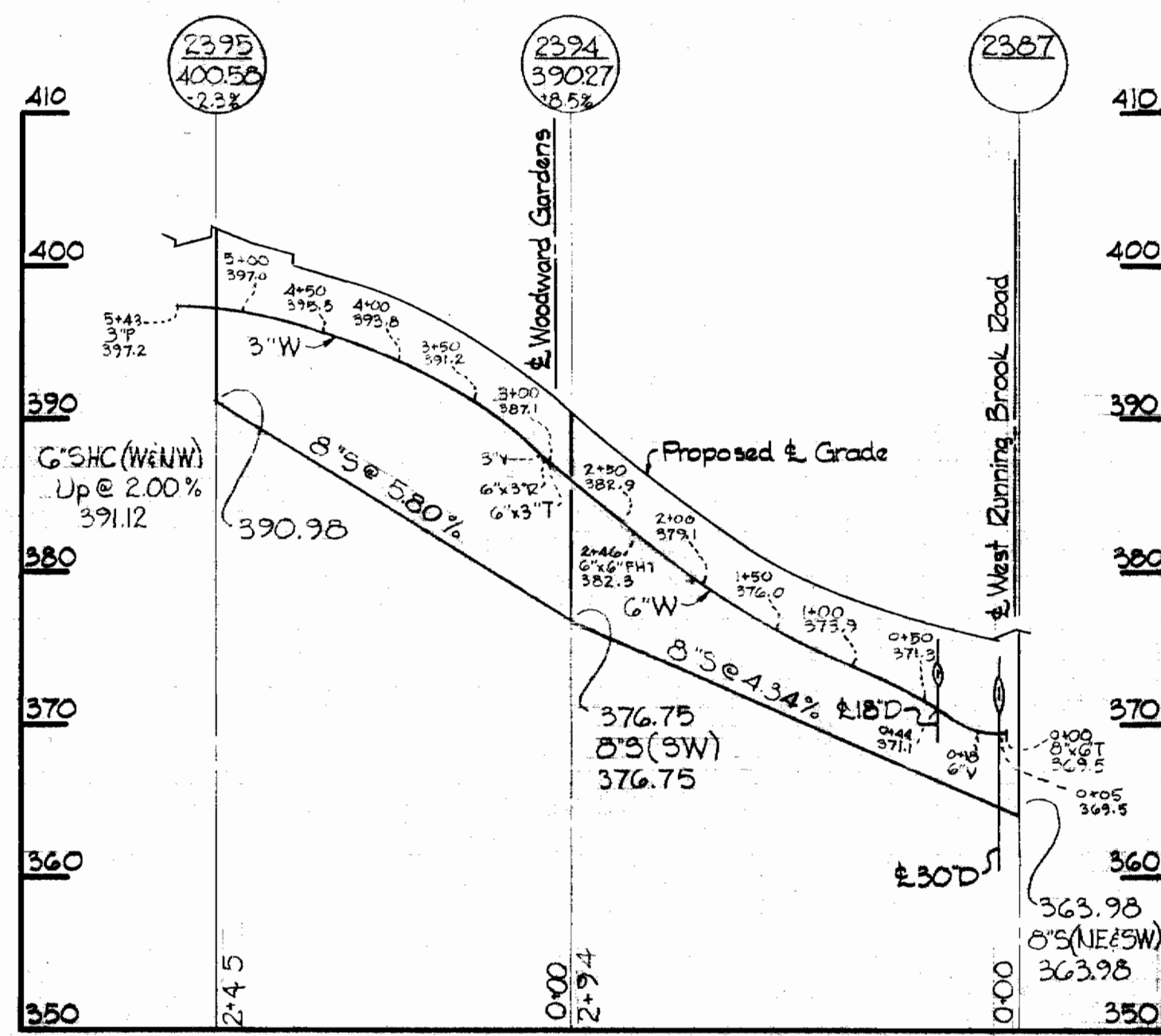
### STONEBOAT ROW

For Plan See Drawing N# 2



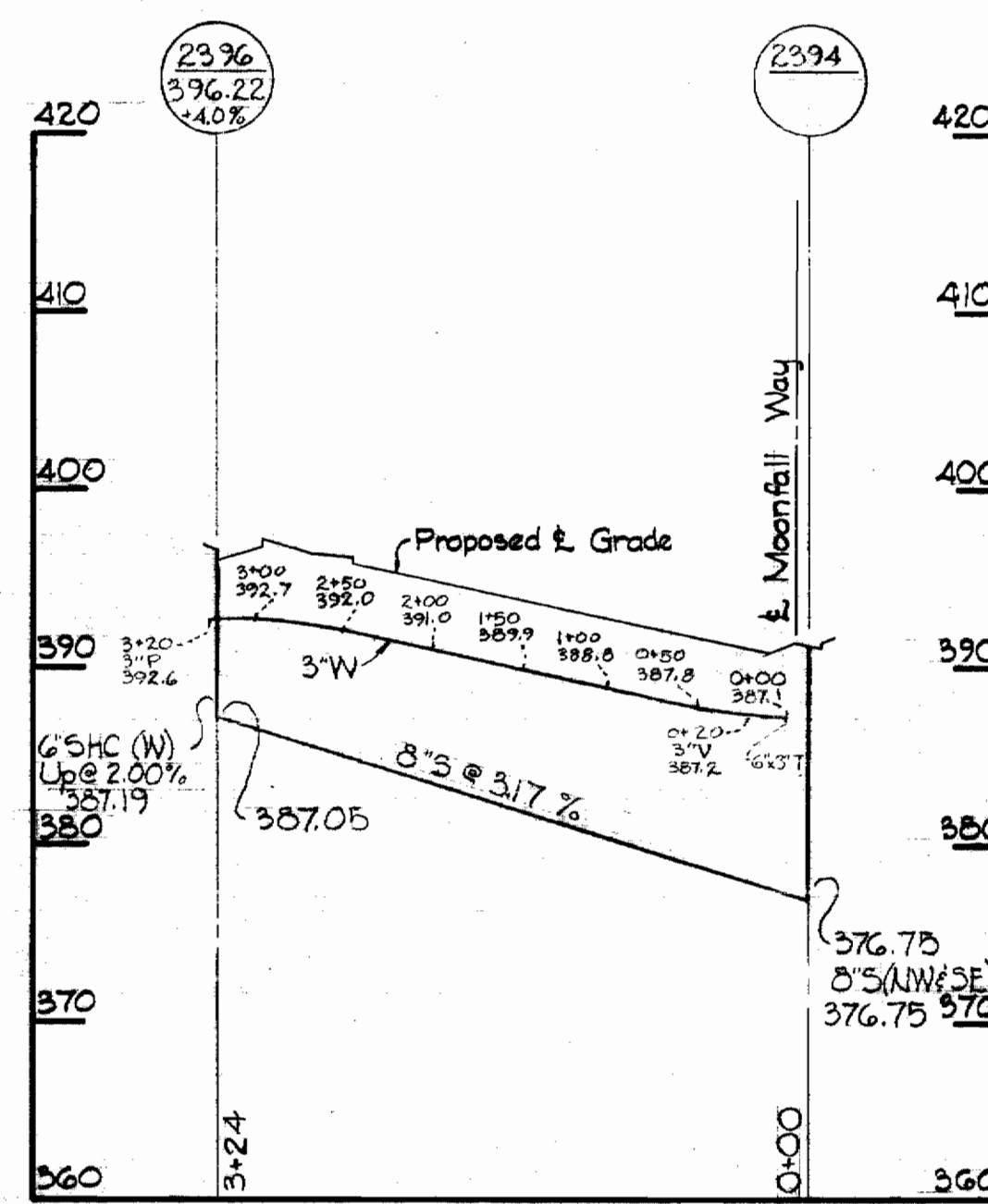
### MOONFALL WAY

For Plan See Drawing N# 3



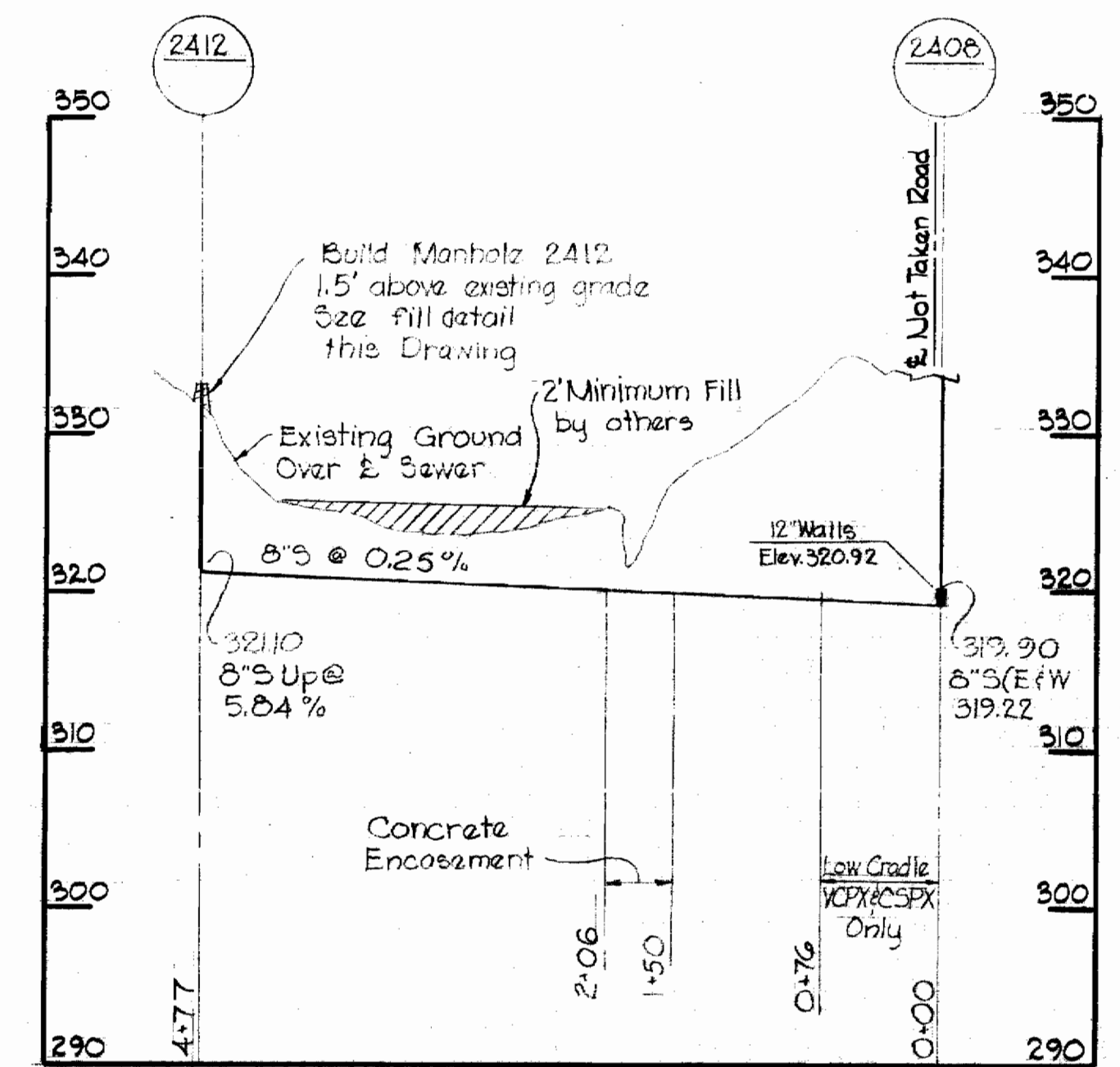
### WOODWARD GARDENS

For Plan See Drawing L# 3



### OUTFALL C

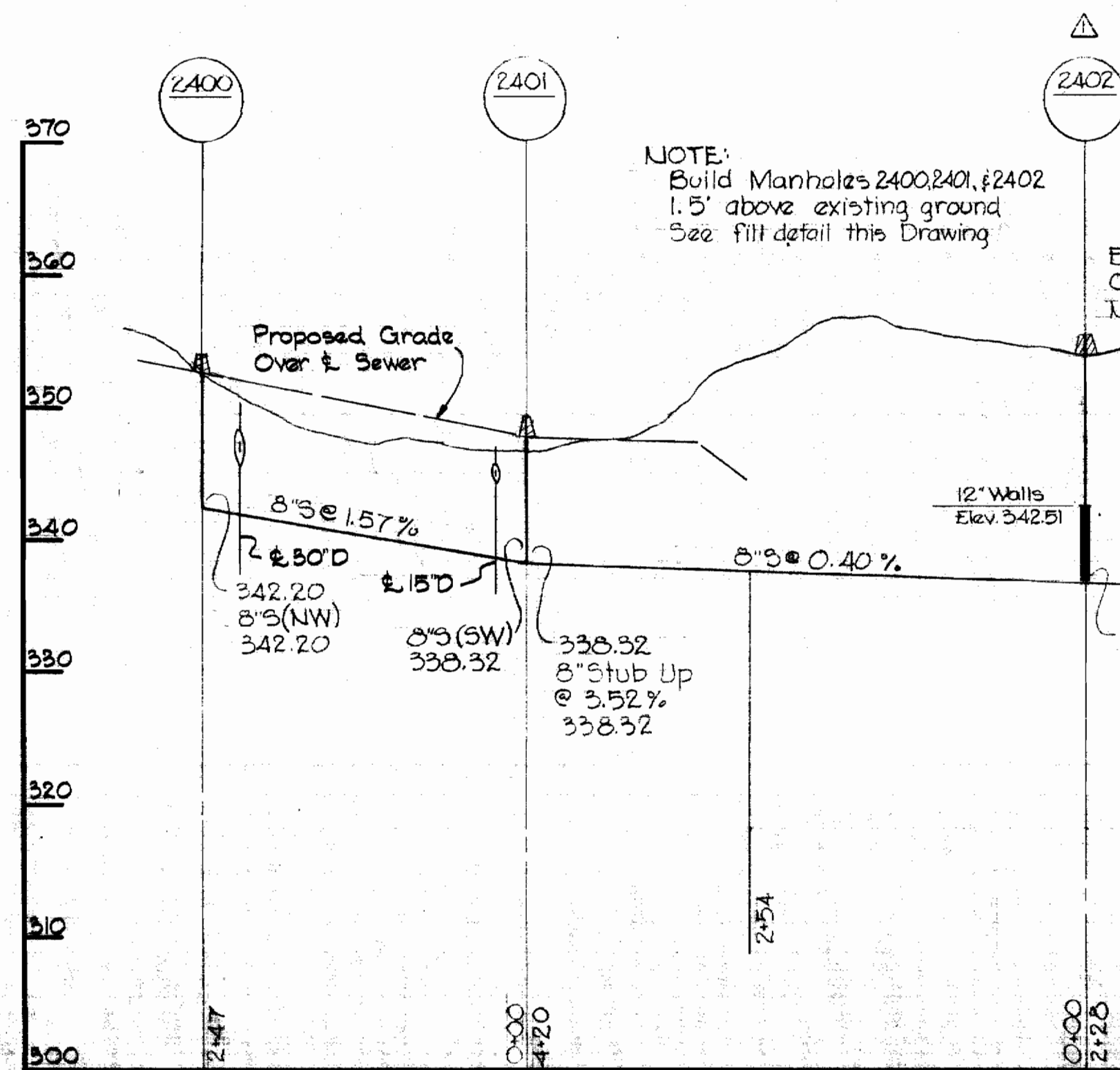
For Plan See Drawing N# 1



ALL SEWER PIPE - A.C. CLASS 2400  
ALL WATER MAINS - CAST IRON

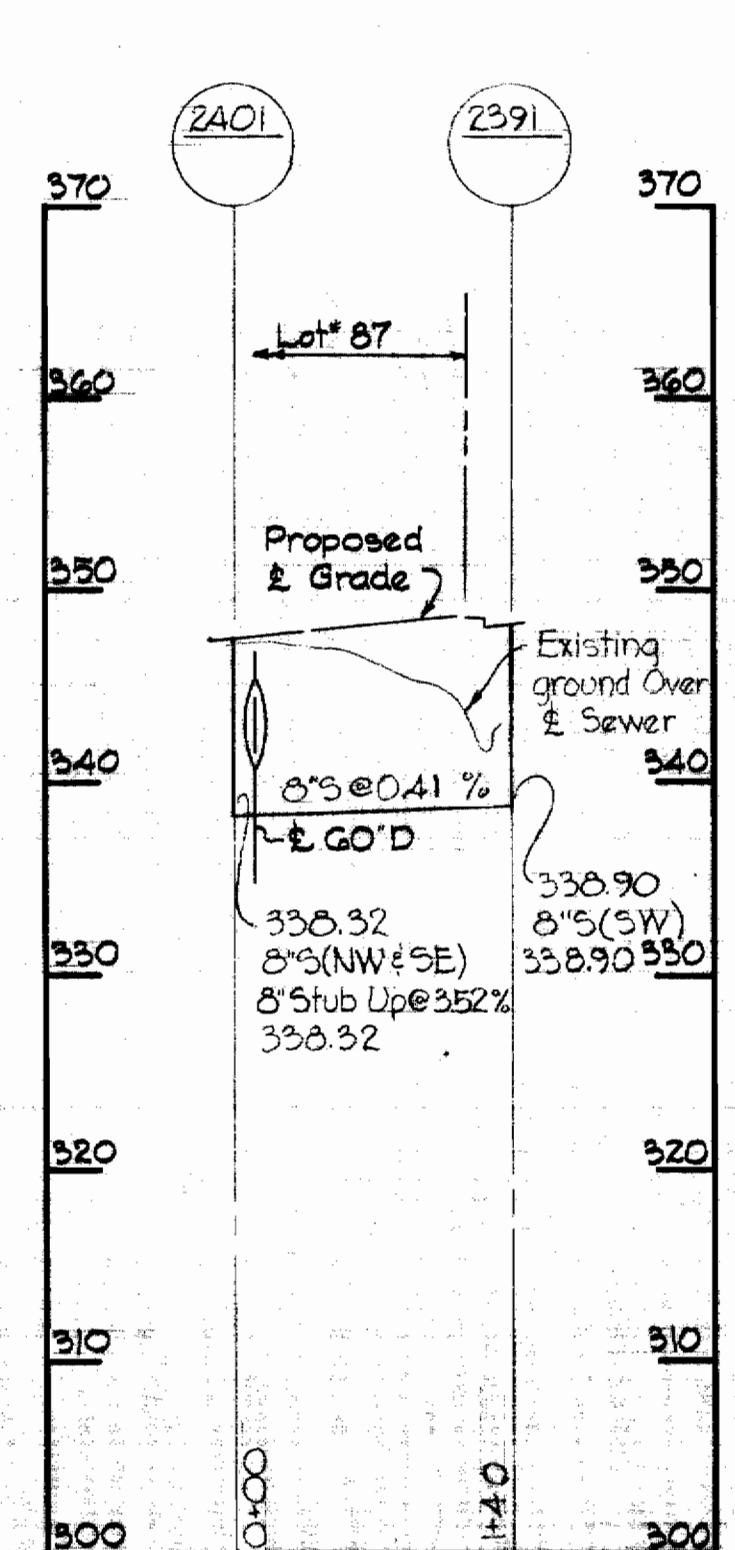
### OUTFALL A

For Plan See Drawing N# 2



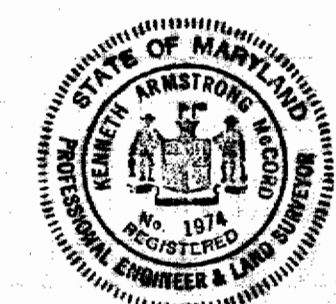
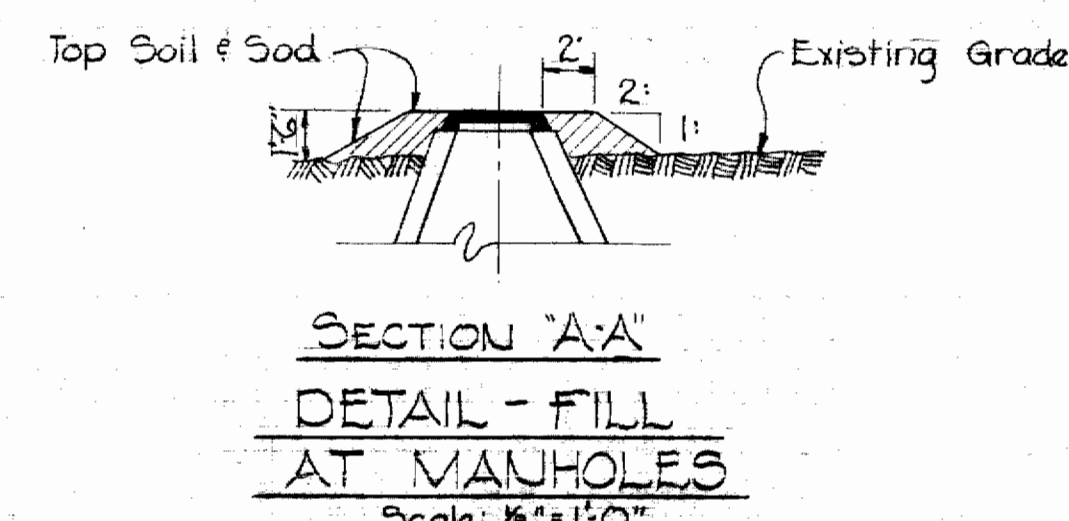
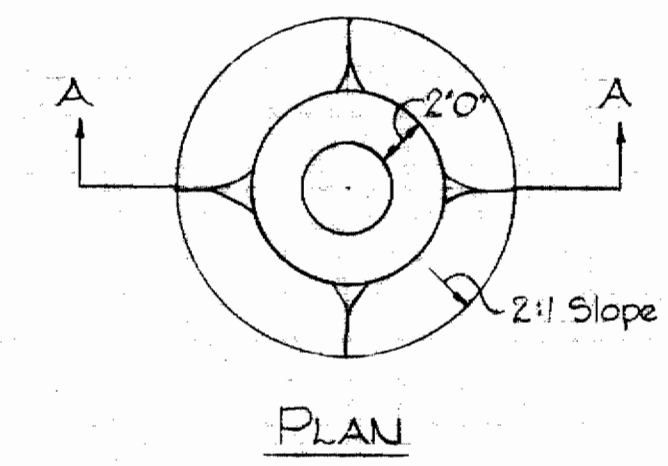
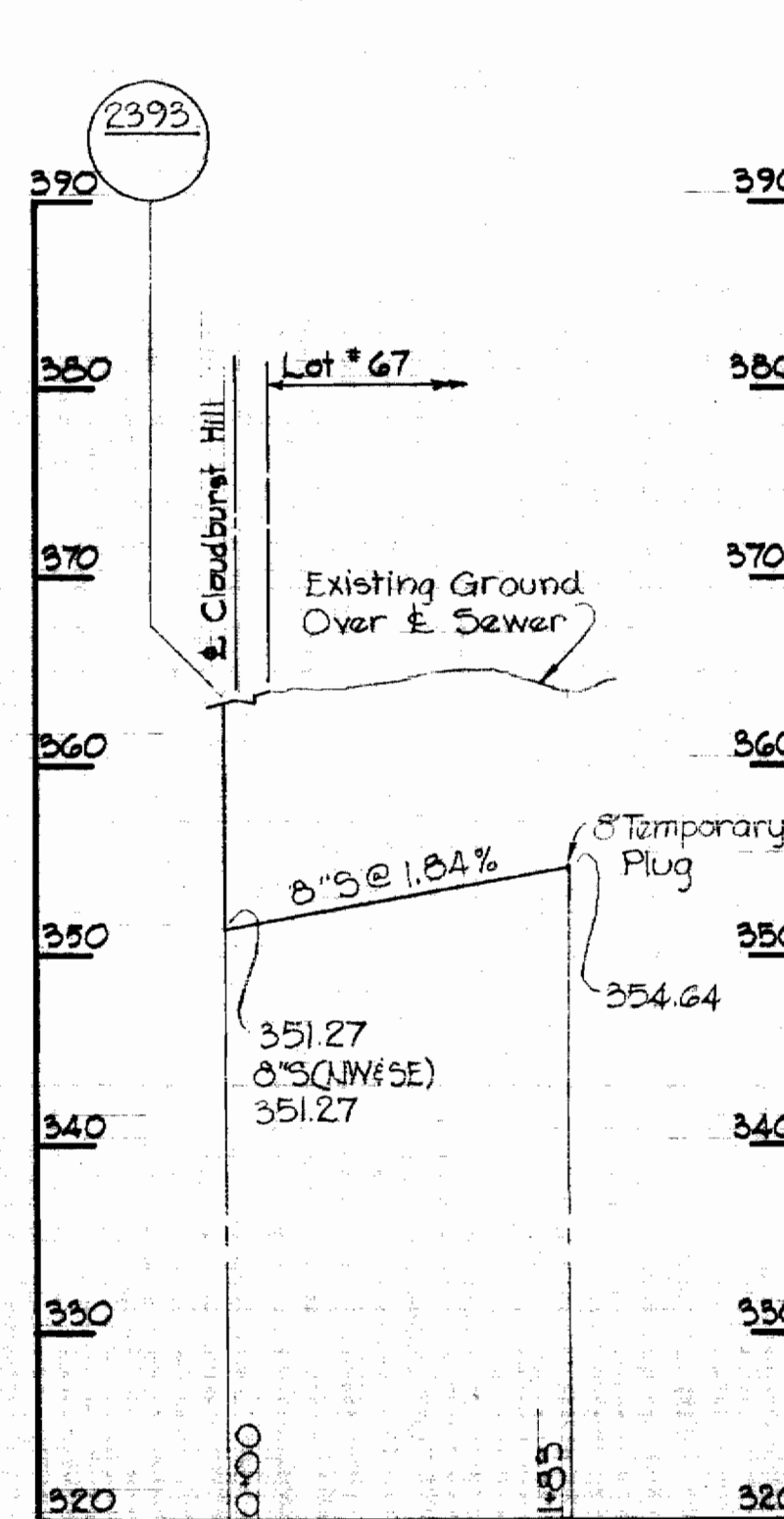
### OUTFALL B

For Plan See Drawing N# 2



### OUTFALL D

For Plan See Drawing N# 3



*Howard A. McLeod*

11-14-67 Revised Ground Over and added G's to MH 2402  
11 Date Revision

Running Brook Area II  
Contract N# 207 W# 5

WHITMAN, REQUARDT & ASSOCIATES  
ENGINEERS  
1304 ST. PAUL ST.  
BALTIMORE, MARYLAND

HOWARD COUNTY METROPOLITAN COMMISSION  
10-10-67 DATE  
*W O F* CHIEF ENGINEER

CONTRACT NO. 207 WBS

PROFILES OF  
WATER & SEWER MAINS

COLUMBIA  
VILLAGE OF WILDE LAKE  
ELECTION DISTRICT - CLARKSVILLE No. 5

DRAWING NO. 5 OF 5 SCALE AS SHOWN

WS 207-WS/5

SUSPENSE