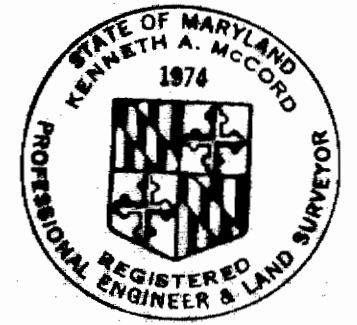


W.R. & A. B.M. # 22-C Elev. 314.21
 R.R. Spike in base of C&P
 Pole # 7, 25' RT. of Sta. G-15
 Between P.I.'s R-22-E & R-22-F

Property of
 HOWARD RESEARCH AND DEVELOPMENT CORP.

Property of
 HERBERT CONSTRUCTION COMPANY

Property of
 HERBERT CONSTRUCTION COMPANY

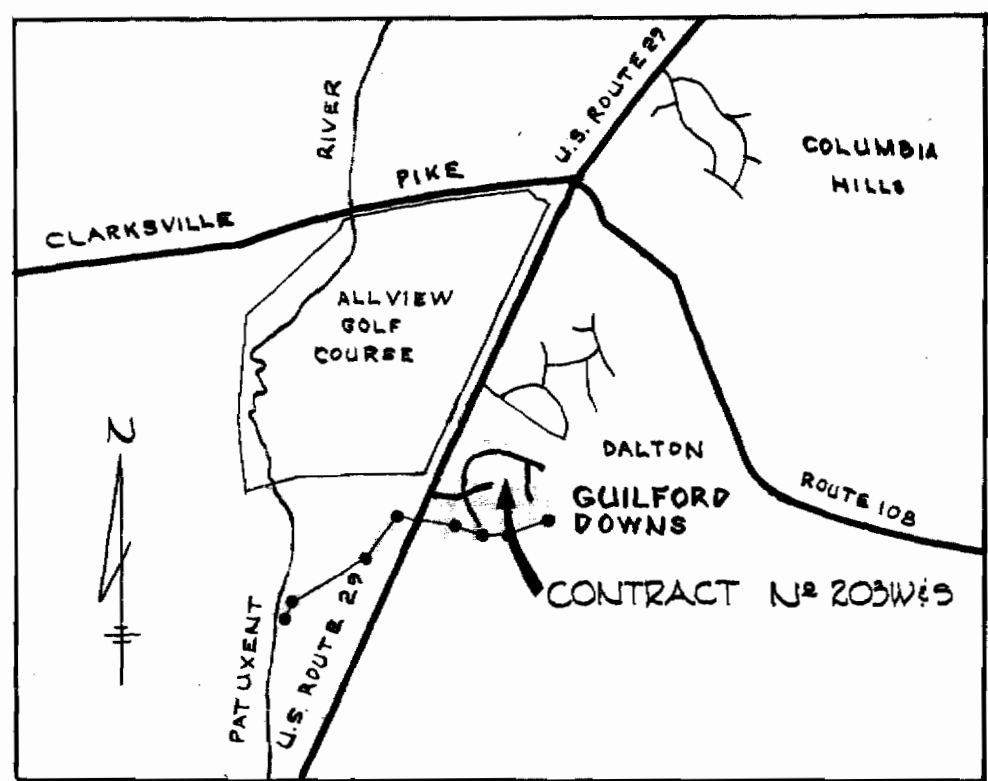


Kenneth A. McCord

Guilford Downs
 Contract 203 W&S

NOT INCLUDED IN THIS CONTRACT
 TO BE BUILT BY OTHERS UNDER CONTRACT N# 225-W&S

WHITMAN, REQUARDT & ASSOCIATES ENGINEERS 1304 ST. PAUL ST. BALTIMORE, MARYLAND	HOWARD COUNTY METROPOLITAN COMMISSION 3-20-68 DATE <i>W. O. Puller</i> CHIEF ENGINEER	CONTRACT NO. 203 W&S	PLAN OF SEWER MAINS	ELECTION DISTRICT GUILFORD NO. 6	DRAWING NO. 1 OF 6 SCALE 1"=50' 507-483 507-482
---	---	----------------------	------------------------	-------------------------------------	--



VICINITY MAP
Scale: 1" = 1/2 mile

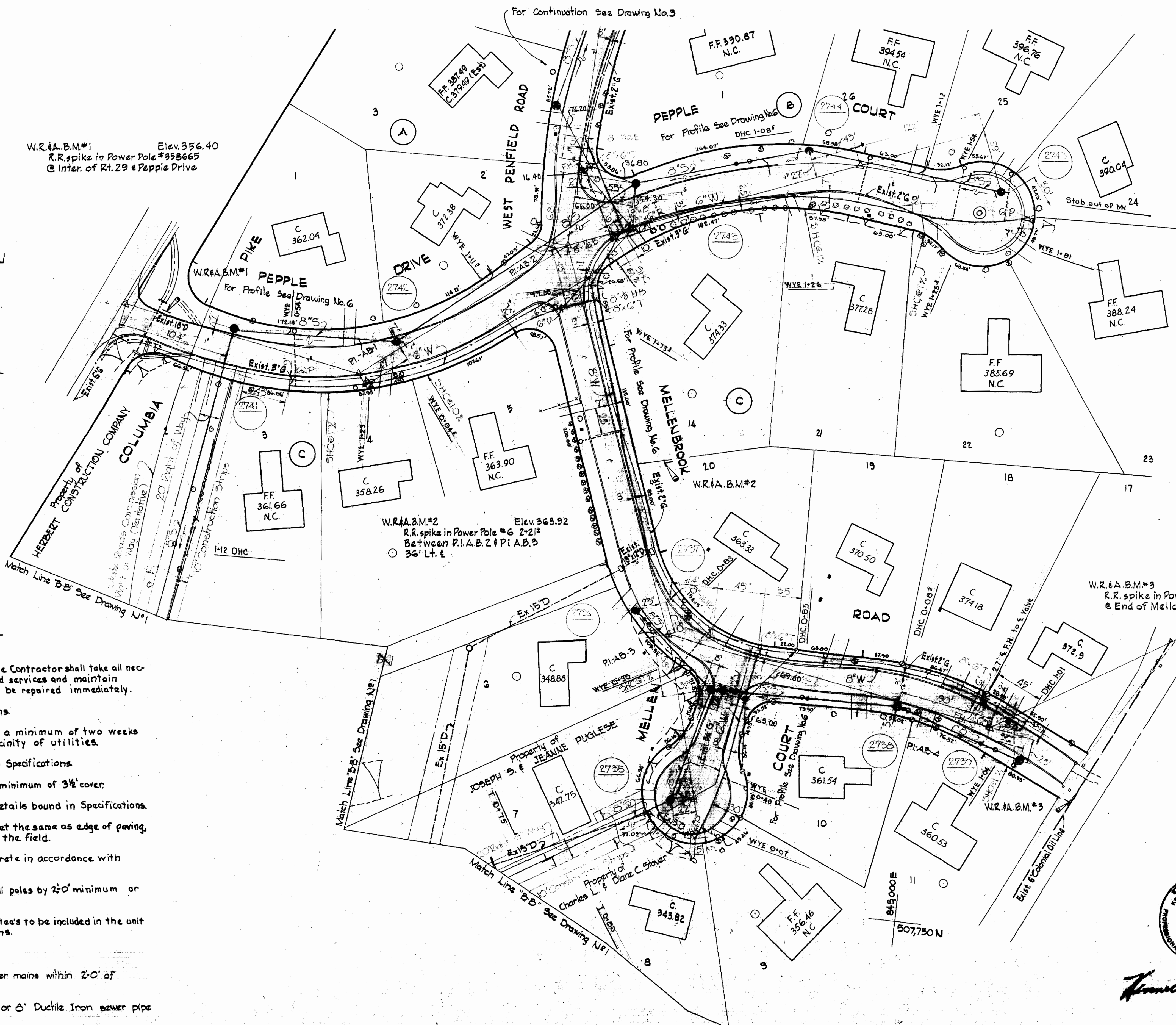
W.R. & A. B.M.#1 Elev. 356.40
R.R. spike in Power Pole #358665
@ Inter. of Rt. 29 & Pepple Drive

W.R. & A. B.M.#2 Elev. 363.92
R.R. spike in Power Pole #6 2-21"
Between P.I.A.B. 2 & P.I.A.B. 3
36' Lt. &

W.R. & A. B.M.#3 Elev. 368.34
R.R. spike in Power Pole #340785
@ End of Mellonbrook Rd.

GENERAL NOTES

1. Approximate location of existing mains are shown. The Contractor shall take all necessary precautions to protect existing mains and services and maintain uninterrupted supply. Any damage incurred shall be repaired immediately.
2. All pipe elevations are invert \ominus elevations.
3. The Contractor shall locate existing utilities a minimum of two weeks in advance of construction operations in vicinity of utilities.
4. For all standard details see standards bound in Specifications.
5. All water mains to be C.I.P. or D.I.P. and have a minimum of 3/4" cover.
6. Block all fittings with concrete see standard details bound in Specifications.
7. Bury line elevation on fire hydrants shall be set the same as edge of paving, top of curb or as directed by the Engineer in the field.
8. All Fire Hydrants shall be buttressed with concrete in accordance with Standard Detail W-4.
9. Clear all utilities by a minimum of 6'; clear all poles by 2'-0" minimum or tunnel as required.
10. Cost of stripping Fire Hydrants and Valves to tees to be included in the unit price bid for furnishing and laying water mains.
11. All Manholes shall be 4'-0" inside diameter.
12. The Contractor shall provide a joint in all sewer mains within 2'-0" of exterior Manhole walls.
13. All 8" Cast Iron sewer pipe to be Class 22, or 8" Ductile Iron sewer pipe Class 2 unless otherwise noted.

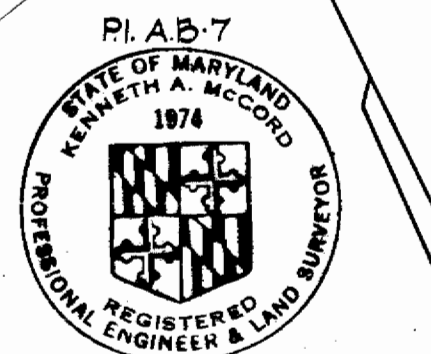
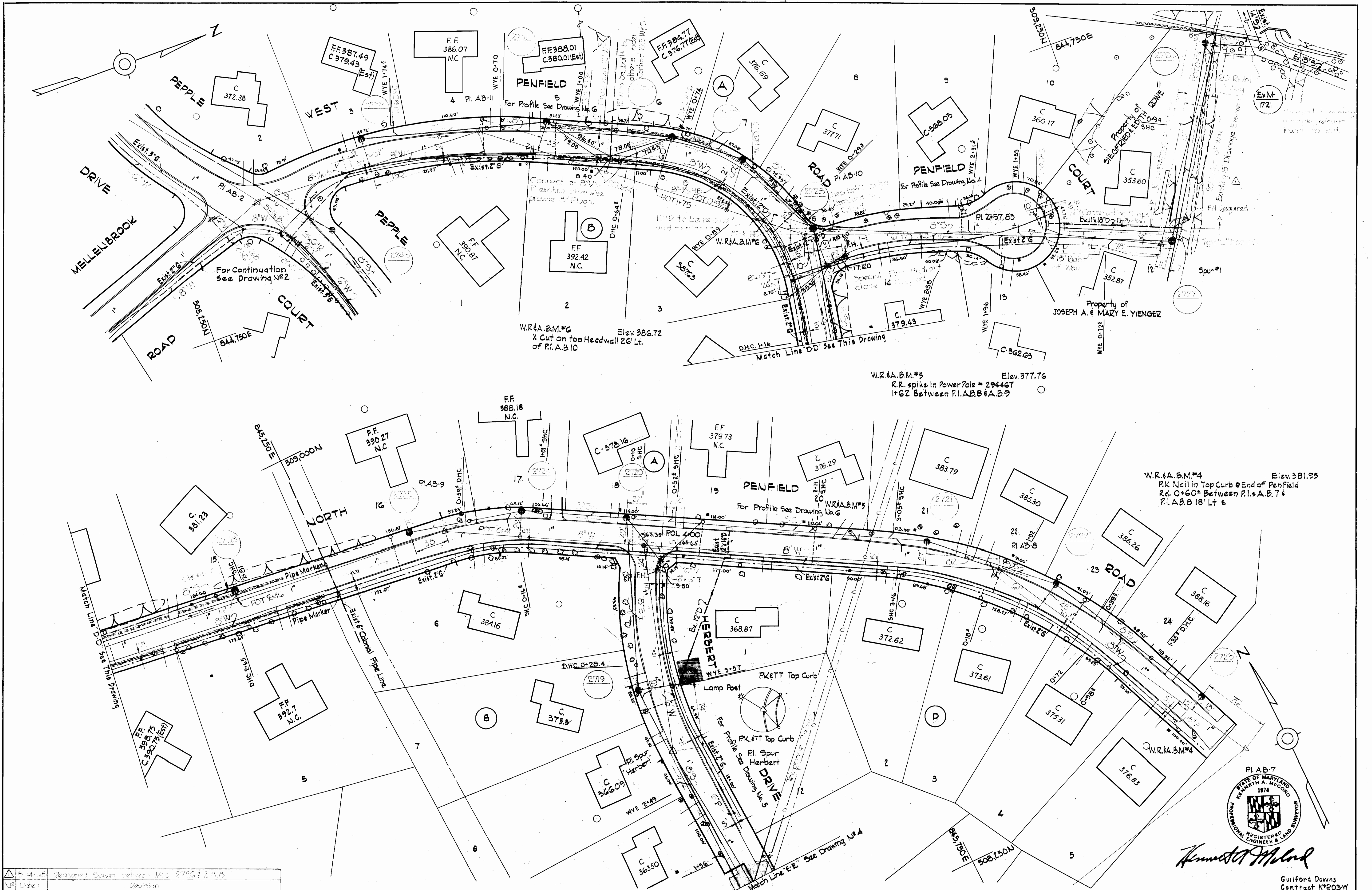


Kenneth A. McCord

Guilford Downs
Contract # 203-W/S

WHITMAN, REQUARDT & ASSOCIATES ENGINEERS 1304 ST. PAUL ST. BALTIMORE, MARYLAND	HOWARD COUNTY METROPOLITAN COMMISSION DATE: 3-20-68 CHIEF ENGINEER	CONTRACT NO. 203-W/S	PLAN OF WATER AND SEWER MAINS	ELECTION DISTRICT GUILFORD NO. 6	DRAWING NO. 2 OF 6 SCALE 1" = 50' AS BUILT MARCH 26, 1968
---	--	----------------------	----------------------------------	-------------------------------------	---

WS 203-W/S/2



Kenneth A. McCord

Guilford Downs
Contract #203W

Revised Sewer between Mts 270 & 275
Revision

WHITMAN, REQUARDT & ASSOCIATES
ENGINEERS
1304 ST. PAUL ST.
BALTIMORE, MARYLAND

HOWARD COUNTY METROPOLITAN COMMISSION
3-20-69
DATE
W. O. Falbert
CHIEF ENGINEER

CONTRACT NO. 203-WBS

**PLAN OF
WATER AND SEWER MAINS**

**ELECTION DISTRICT
GUILFORD NO. 6**

**DRAWING
NO. 3
OF 6**

**SCALE
1"=50'**

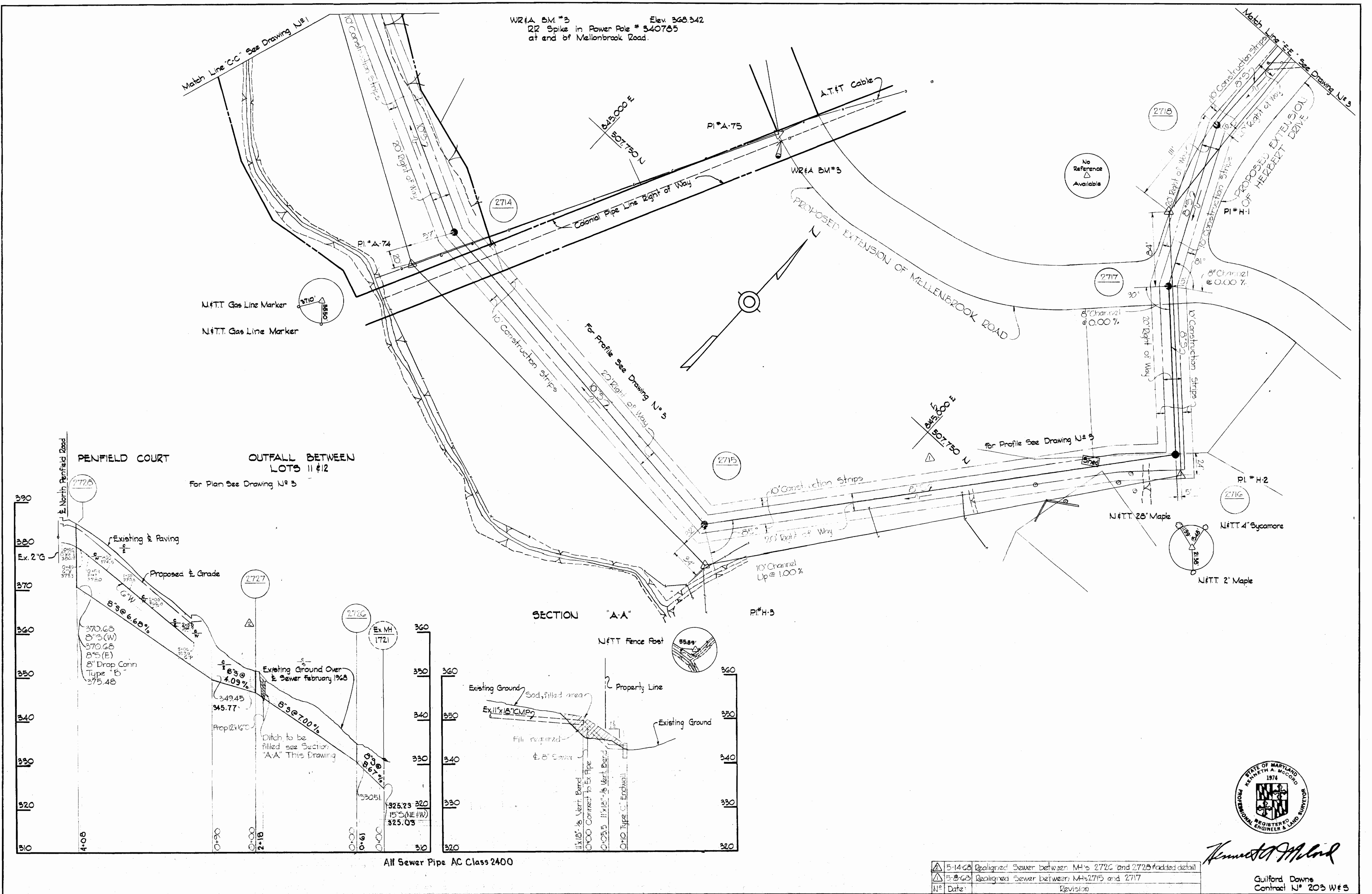
W. O. G021-2

AS BUILT MAY 14, 1968

FB# 3619
3618

WS 203-W5/3

WZ&A BM #3 Elev. 348.342
 RR Spike in Power Pole # 340785
 at end of Mellenbrook Road.



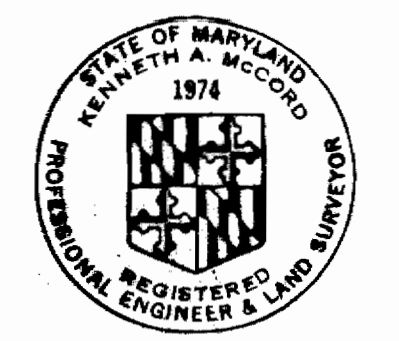
No Reference Available

PENFIELD COURT
 OUTFALL BETWEEN LOTS 11 & 12
 For Plan See Drawing N# 3

SECTION "A-A"

All Sewer Pipe AC Class 2400

5-14-68	Realigned Sewer between MH's 2726 and 2728 fadded detail
5-8-68	Realigned Sewer between MH's 2715 and 2717
N#	Date: Revision

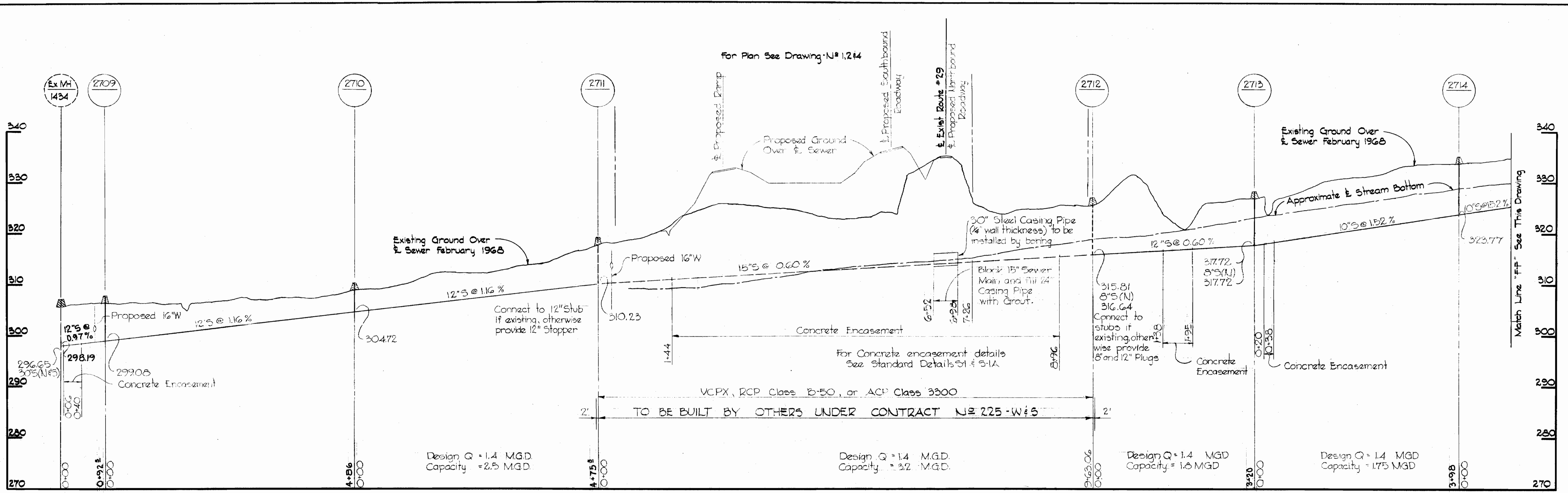


Kenneth A. McLeod

Guilford Downs
 Contract N# 203 W&S

WHITMAN, REQUARDT & ASSOCIATES ENGINEERS 1304 ST. PAUL ST. BALTIMORE, MARYLAND	HOWARD COUNTY METROPOLITAN COMMISSION 3-20-68 DATE	CONTRACT NO. 203-W&S HOWARD COUNTY METROPOLITAN COMMISSION CHIEF ENGINEER	PLAN AND PROFILE OF WATER AND SEWER MAINS	ELECTION DISTRICT GUILFORD NO. 6	DRAWING NO. 4 OF 6 SCALE AS SHOWN
---	--	---	--	-------------------------------------	--------------------------------------

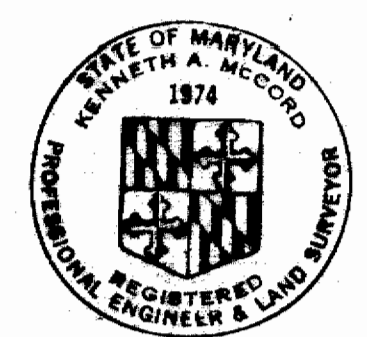
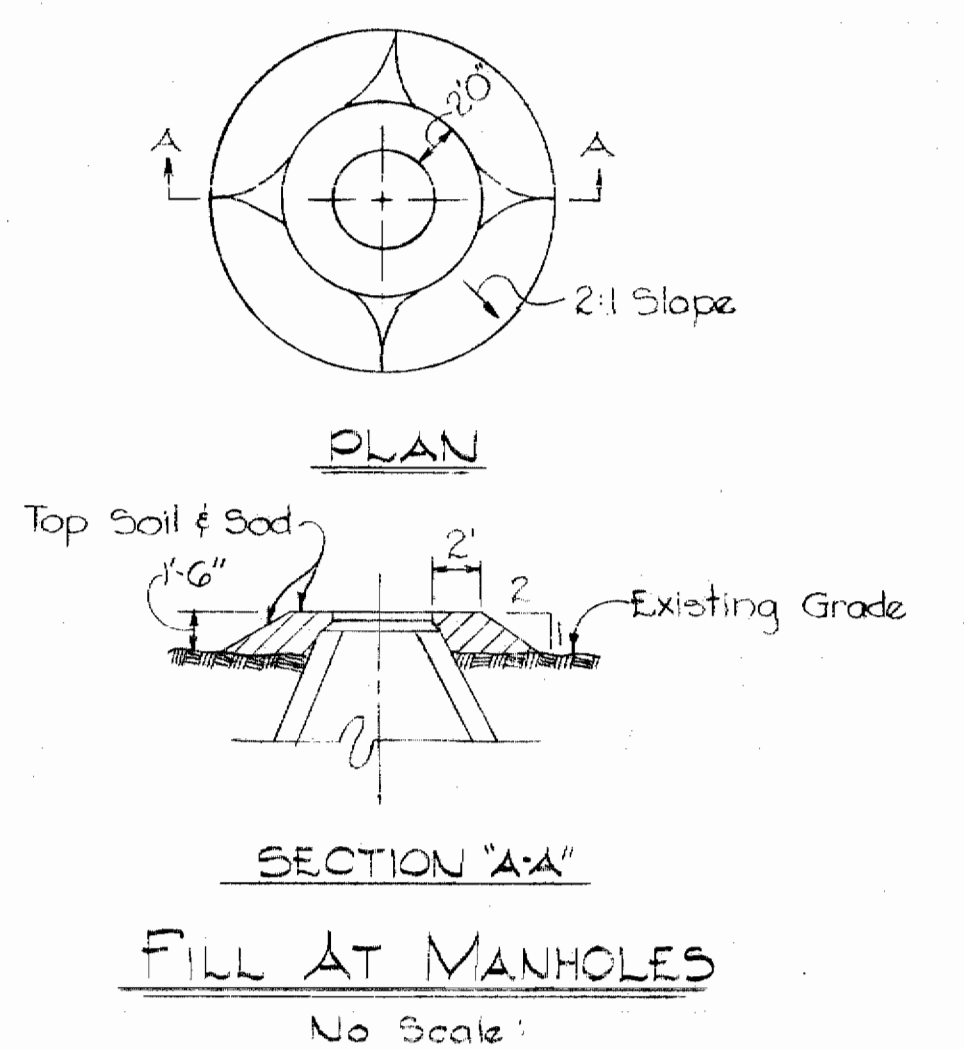
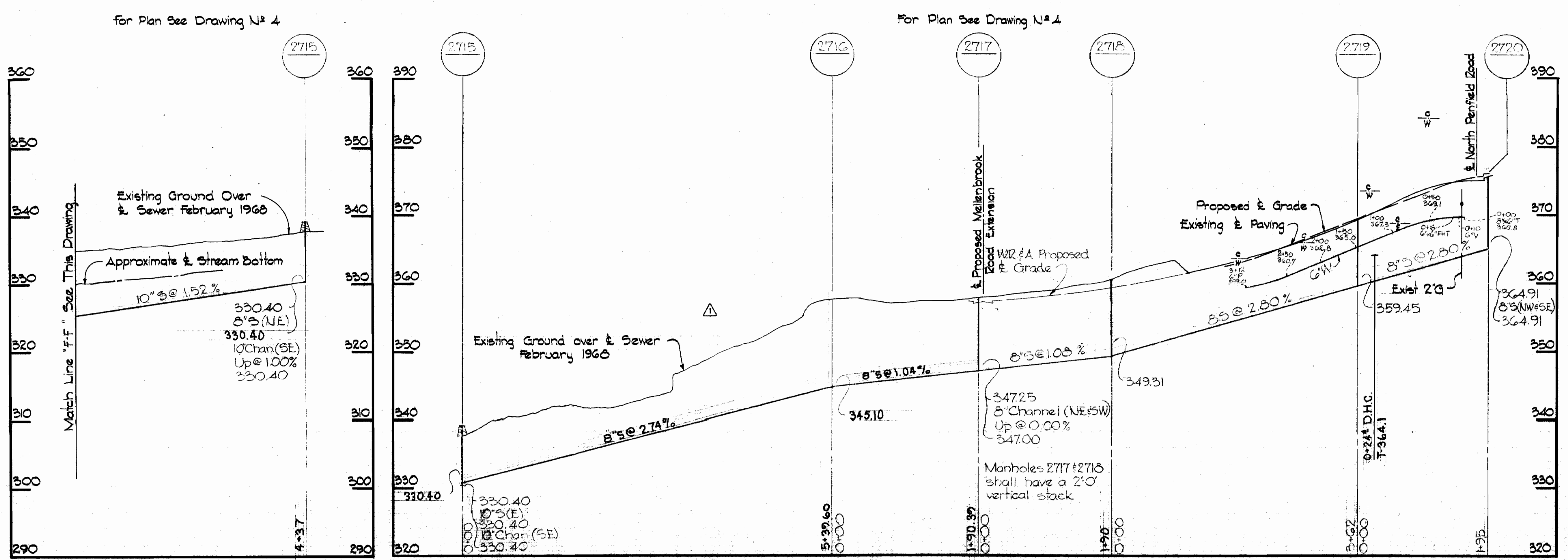
S 203 WS/4



All Sewer Pipe AC Class 2400
All Water Pipe Cast Iron

HERBERT DRIVE OUTFALL

HERBERT DRIVE



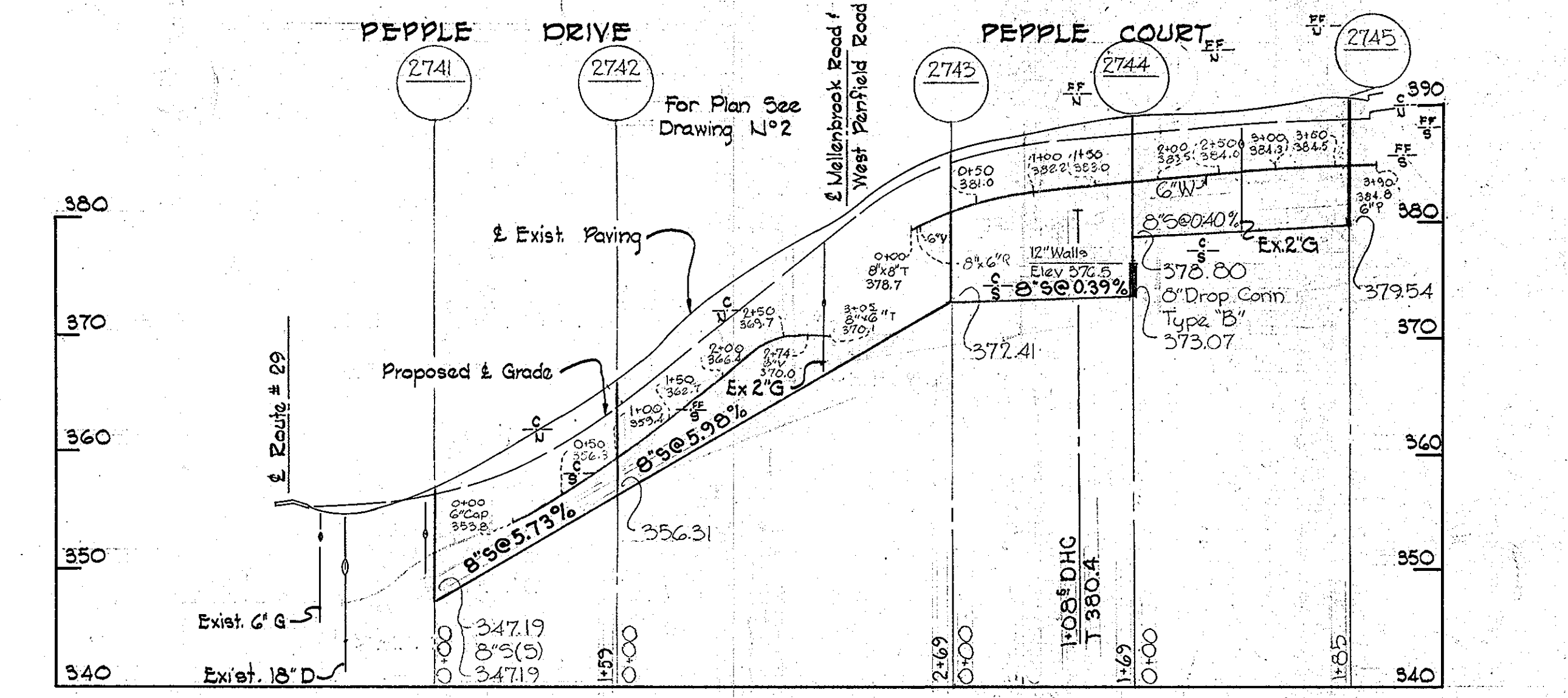
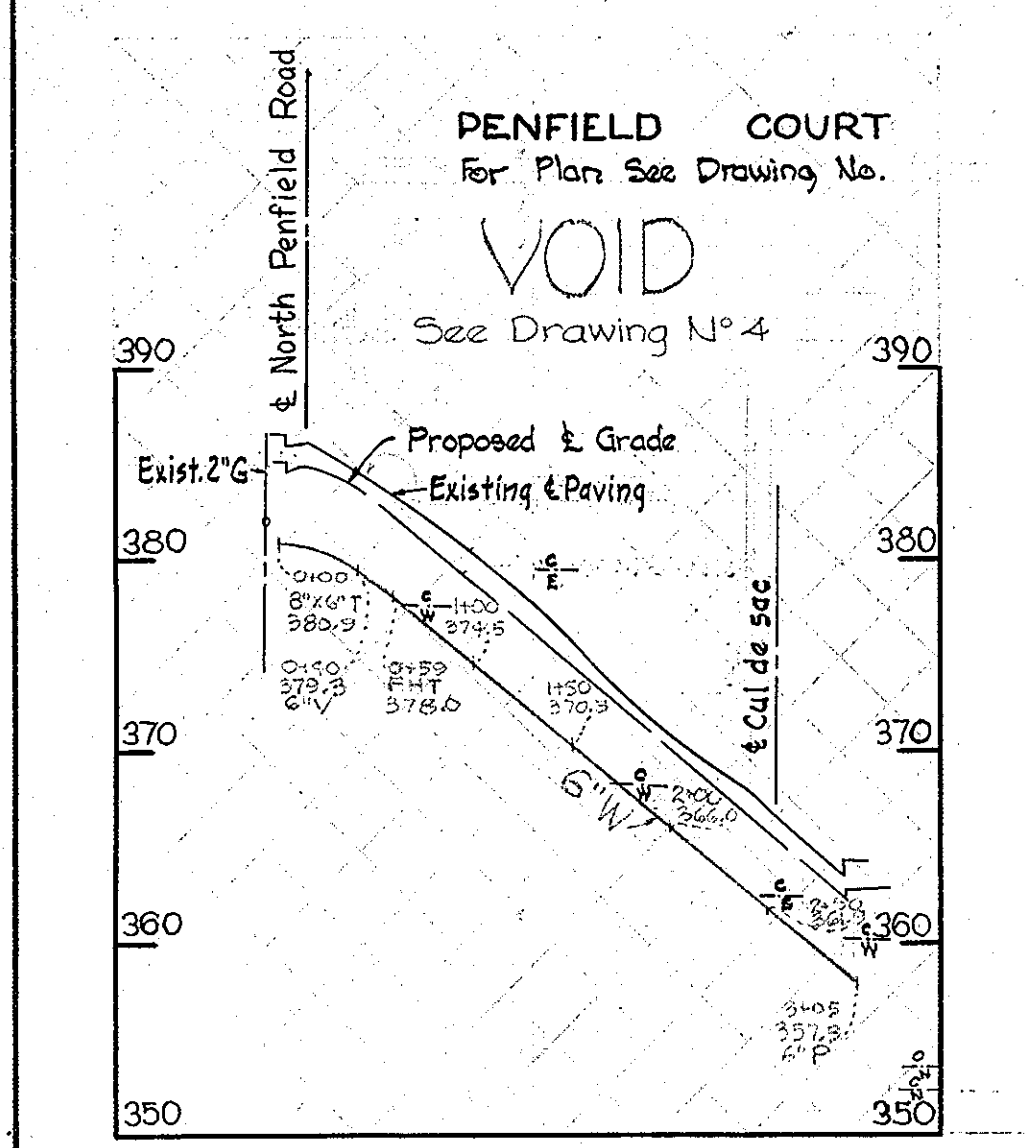
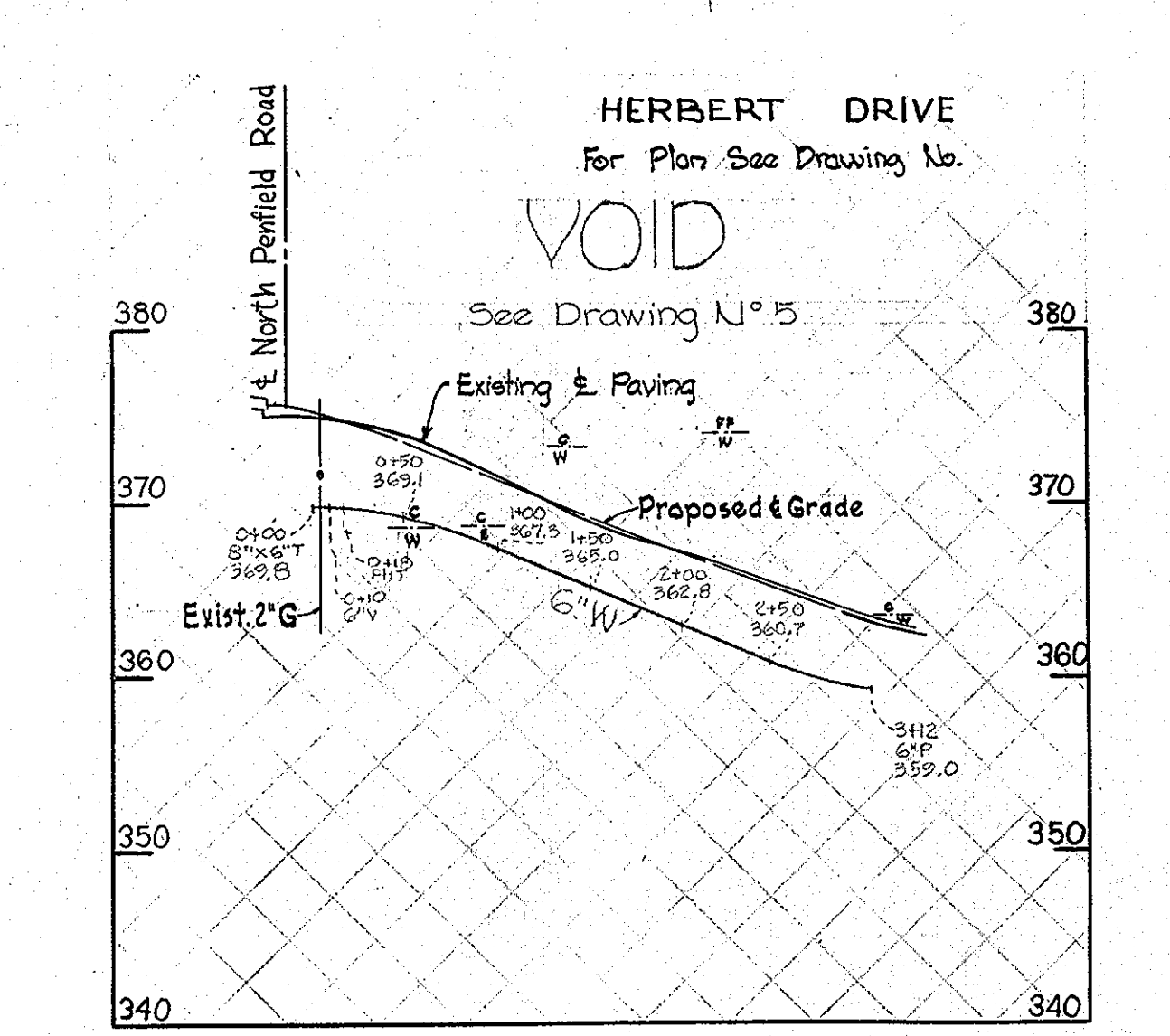
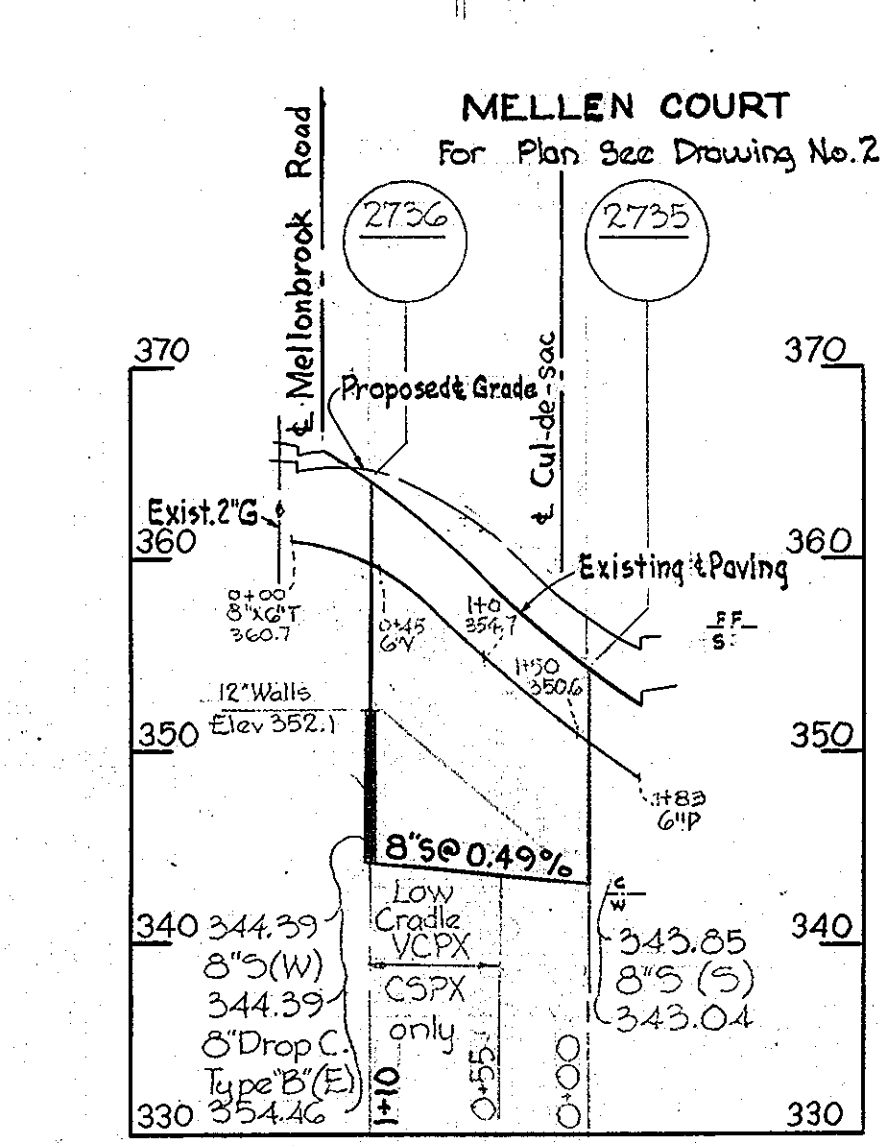
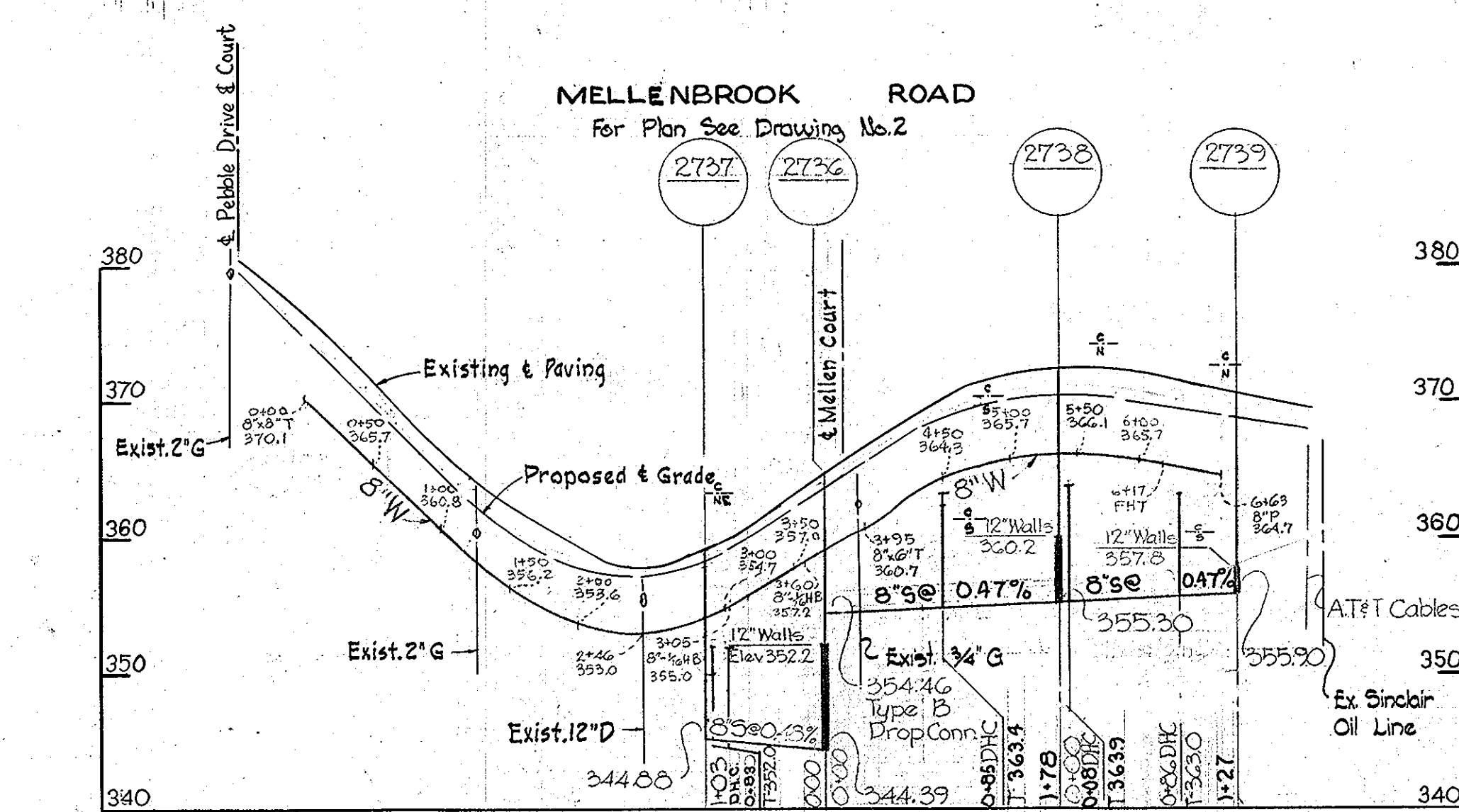
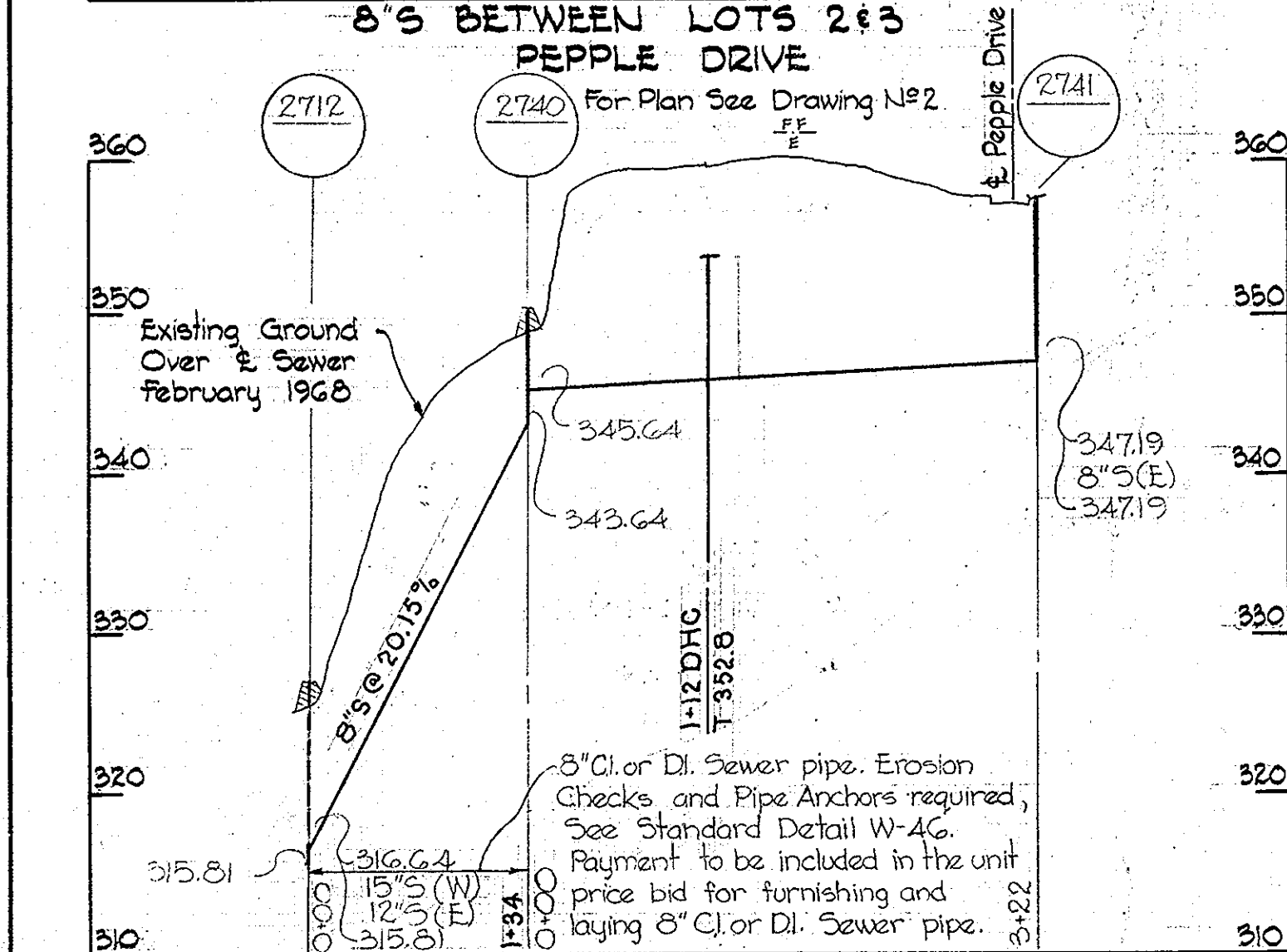
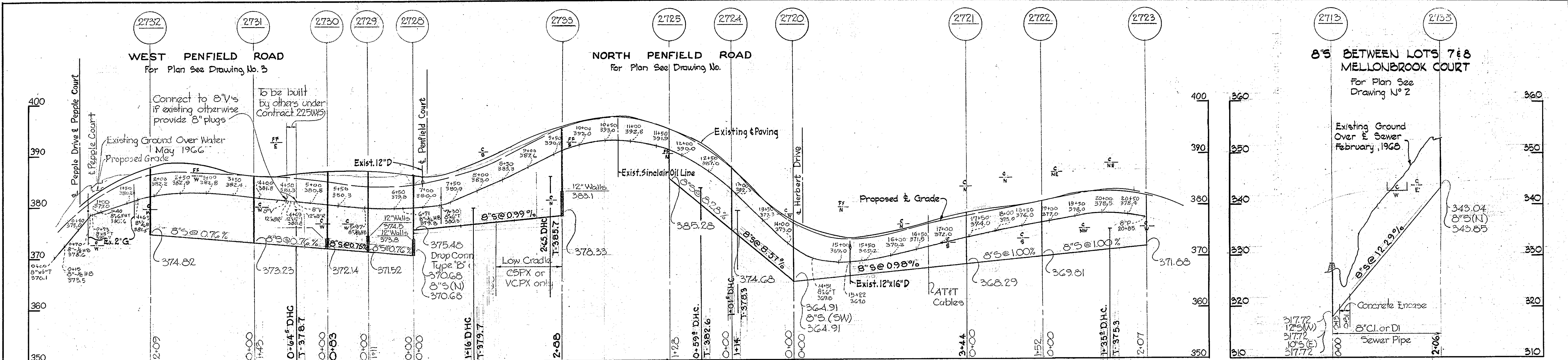
Kenneth A. McCord

15-B-68	Realigned Sewer between MH's 2715 and 2717
Date:	Revision:

Guilford Downs
Contract No. 203 W & S

203-WS/5

WHITMAN, REQUARDT & ASSOCIATES ENGINEERS 1304 ST. PAUL ST. BALTIMORE, MARYLAND	HOWARD COUNTY METROPOLITAN COMMISSION DATE: 3-20-68 W. O. Fallick CHIEF ENGINEER	CONTRACT NO. 203-W&S	PROFILES OF WATER AND SEWER MAINS	ELECTION DISTRICT GUILFORD NO. 6	DRAWING NO. 5	SCALE AS SHOWN
					OF 6	



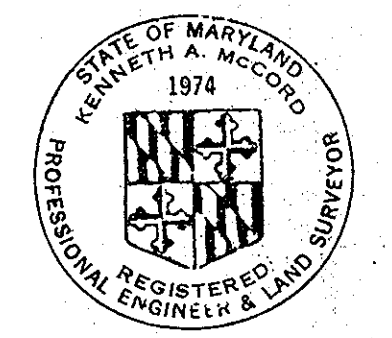
All Sewer Pipe are Class 2400
All Water Pipe are Cast Iron

NOTE:
Payment for furnishing and placing the Class "C" concrete for low cradle shall be included in the unit price bid for furnishing and laying sewer pipe.

Brick manholes shall have 12" Walls as called for on the profiles

Note:
The Contractor shall notify the Telephone Company prior to any construction activities in the vicinity of the telephone cables by calling collect at 685-0400 in Baltimore, Maryland.

Note:
The Contractor shall notify the Colonial Pipeline Company 72 hours in advance of excavation in the vicinity of the Colonial Pipeline R/W by calling: Colonial Division Office, Richmond, Va. Area Code 703, 282-9771; or Mr. S.H. Crumlich, Area Supervisor, Baltimore, Md. 787-2295



Kenneth A. McCro

Guilford Downs
Contract No. 203-W

WHITMAN, REQUARDT & ASSOCIATES ENGINEERS 1304 ST. PAUL ST. BALTIMORE, MARYLAND	HOWARD COUNTY METROPOLITAN COMMISSION DATE: 3-20-68 Chief Engineer: <i>W. O. Palant</i>	CONTRACT NO. 203-W&S	PROFILES OF WATER AND SEWER MAINS	ELECTION DISTRICT GUILFORD NO. 6	DRAWING NO. 6 OF 6 SCALE H-1"=100' V-1"=10' AS BUILT
---	---	----------------------	--------------------------------------	-------------------------------------	--

WS 203-WS/6