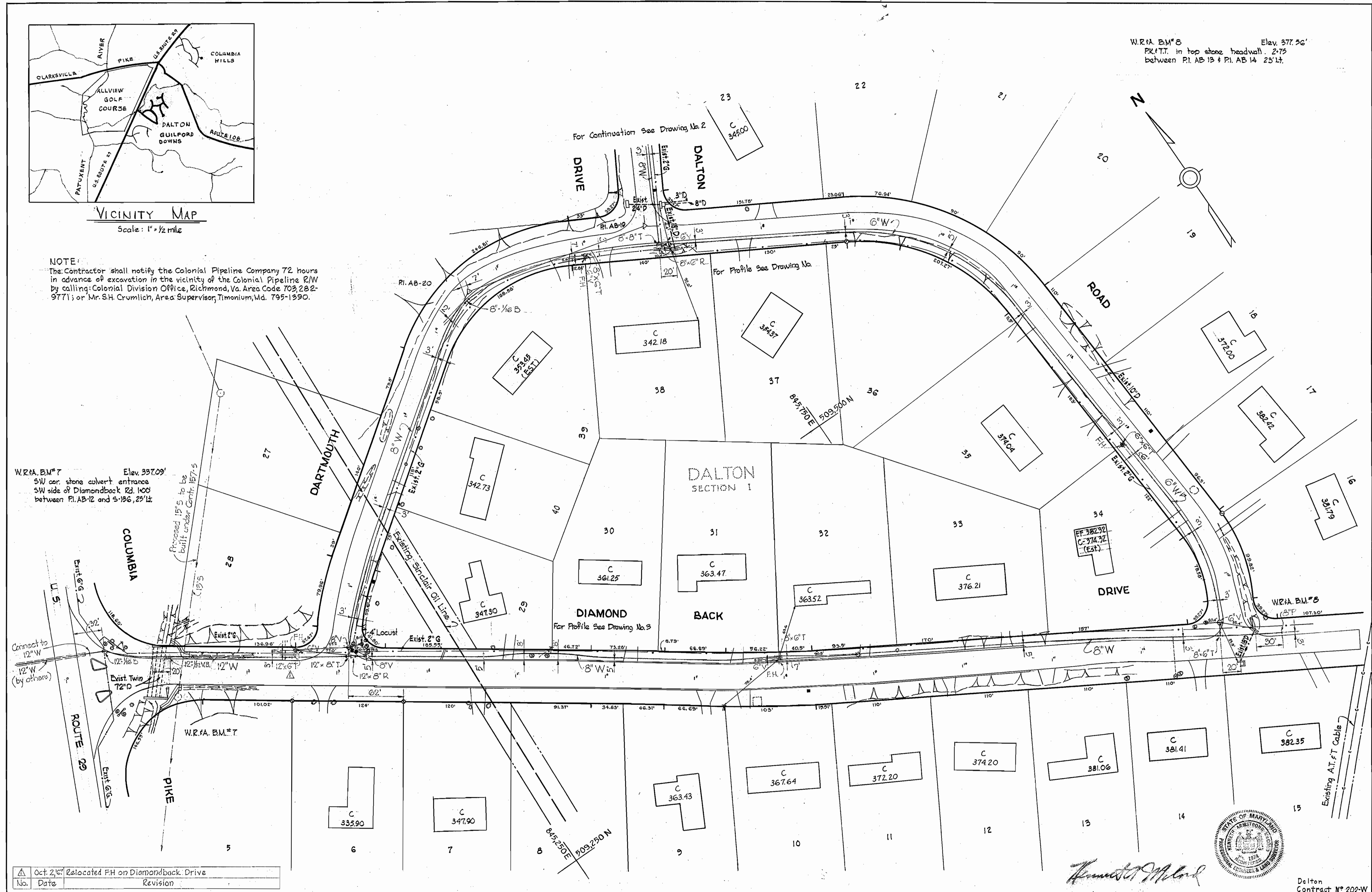


VICINITY MAP
Scale: 1" = 1/2 mile

NOTE:
The Contractor shall notify the Colonial Pipeline Company 72 hours in advance of excavation in the vicinity of the Colonial Pipeline R/W by calling: Colonial Division Office, Richmond, Va. Area Code 703, 282-9771; or Mr. S.H. Crumlich, Area Supervisor, Timonium, Md. 795-1390.

W.R.A. BM#8 Elev. 377.56'
PK#T.T. in top stone headwall, 2-75
between P.I. AB 13 & P.I. AB 14 25' Lt.



W.R.A. BM#7 Elev. 337.09'
SW cor. stone culvert entrance
SW side of Diamondback Rd. 1400'
between P.I. AB-12 and S-136, 25' Lt.

Connect to
12" W
12" W
(by others)

Proposed 15' S to be
built under Contr. 157-5

| No. | Date | Revision |
|-----|------------|-------------------------------------|
| 1 | Oct. 2, 67 | Relocated F.H. on Diamondback Drive |



Armistead M. Lindsey

Delton
Contract No. 202-W

| | | | | | | |
|---|---|--------------------|------------------------|-------------------------------------|--------------------------|-------------------|
| WHITMAN, REQUARDT & ASSOCIATES ENGINEERS 1304 ST. PAUL ST. BALTIMORE, MARYLAND | HOWARD COUNTY METROPOLITAN COMMISSION 8-31-67 W.O. Salant CHIEF ENGINEER | CONTRACT NO. 202-W | PLAN OF WATER MAINS | ELECTION DISTRICT GUILFORD NO. 6 | DRAWING NO. 1 OF 3 | SCALE 1" = 50' |
|---|---|--------------------|------------------------|-------------------------------------|--------------------------|-------------------|

W.O. 5562-2

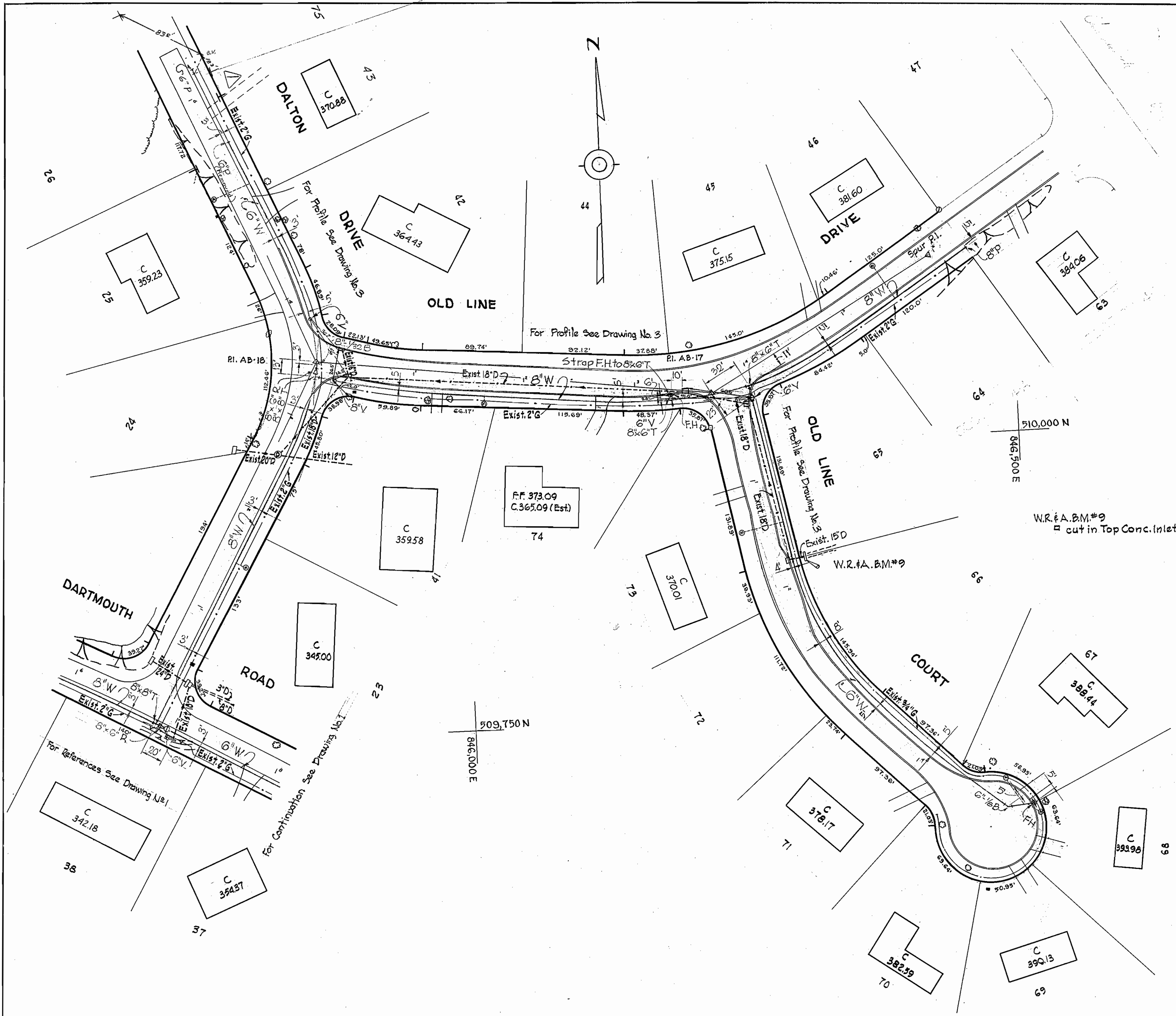
AS BUILT JUNE 6, 1968

F.B. = 3639 + 3621

WS 202-W/1 SM

GENERAL NOTES

1. Approximate location of existing mains are shown. The Contractor shall take all necessary precautions to protect existing mains and services and maintain uninterrupted supply. Any damage incurred shall be repaired immediately.
2. All pipe elevations are invert elevations.
3. The Contractor shall locate existing utilities a minimum of two weeks in advance of construction operations in vicinity of utilities.
4. For all standard details see standards bound in Specifications.
5. All water mains to be C.I.P or D.I.P and have a minimum of 3 1/2' cover.
6. Block all fittings with concrete, see standard details bound in Specifications.
7. Bury line elevation on fire hydrants shall be set the same as edge of paving, top of curb or as directed by the Engineer in the field.
8. All Fire Hydrants shall be buttressed with concrete in accordance with Standard Detail W-4.
9. Clear all utilities by a minimum of 6', clear all poles by 2'-0" minimum or tunnel as required.
10. Cost of strapping Fire Hydrants and Valves to trees to be included in the unit price bid for furnishing and laying water mains.



| | | |
|-----|------------|-------------------------------------|
| No. | Date | Revision |
| 1 | Jun 23, 67 | 68' Extension @ END OF DALTON DRIVE |

WHITMAN, REQUARDT & ASSOCIATES
ENGINEERS
1304 ST. PAUL ST.
BALTIMORE, MARYLAND

HOWARD COUNTY METROPOLITAN COMMISSION
DATE: 8-31-67
W O Robert
CHIEF ENGINEER

CONTRACT NO. 202-W

PLAN OF
WATER MAINS

ELECTION DISTRICT
GUILFORD NO. 6

Drawing NO. 2 OF 3
SCALE 1" = 50'



Handwritten signature

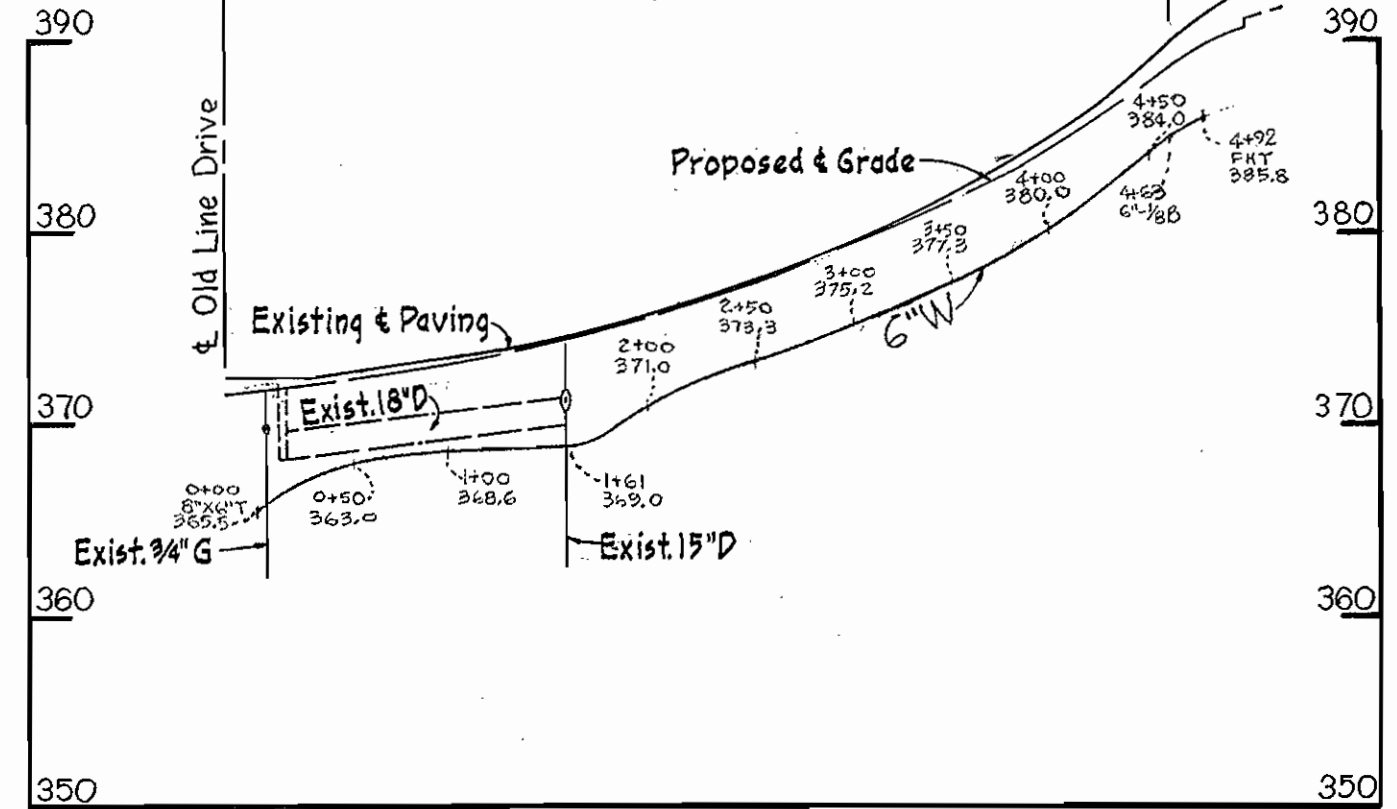
Dalton
Contract No. 202-W

WS 202-W/2

WS 202-W/3

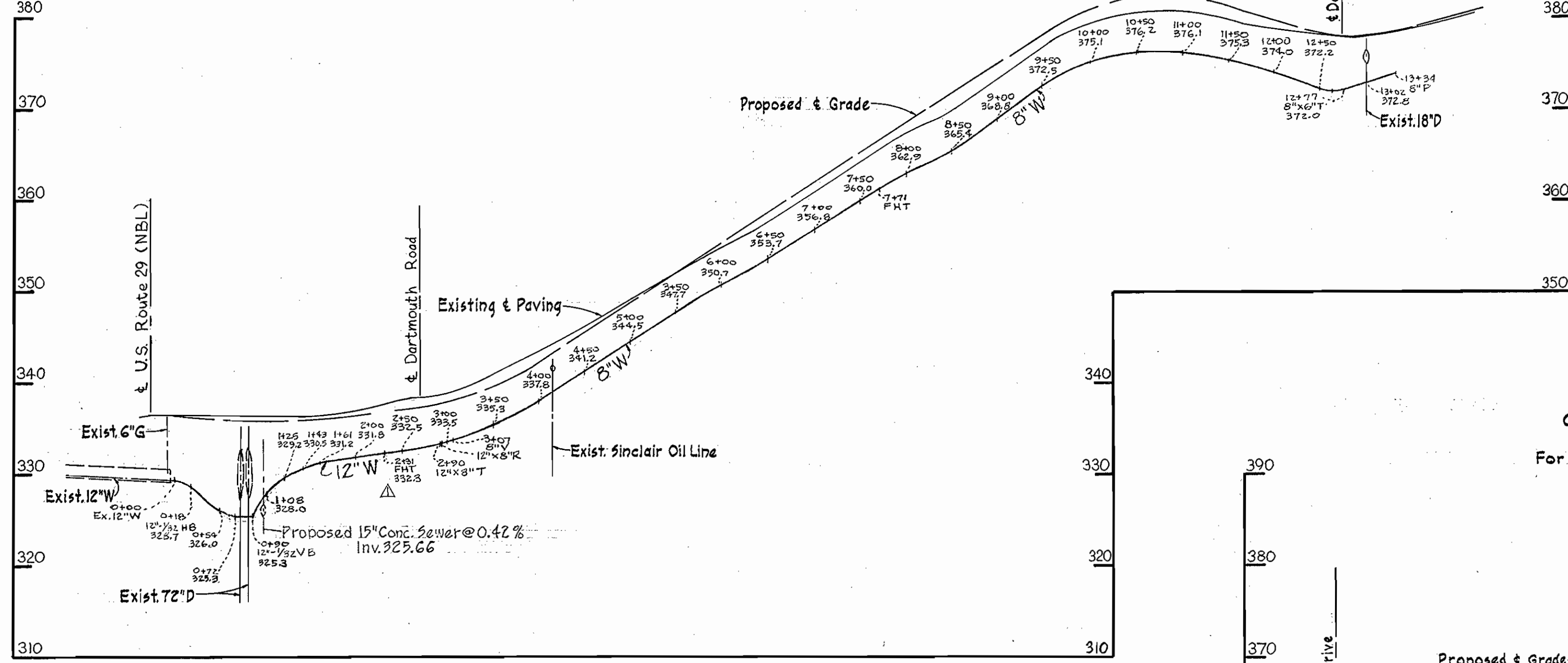
OLD LINE COURT

For Plan See Drawing No. 2



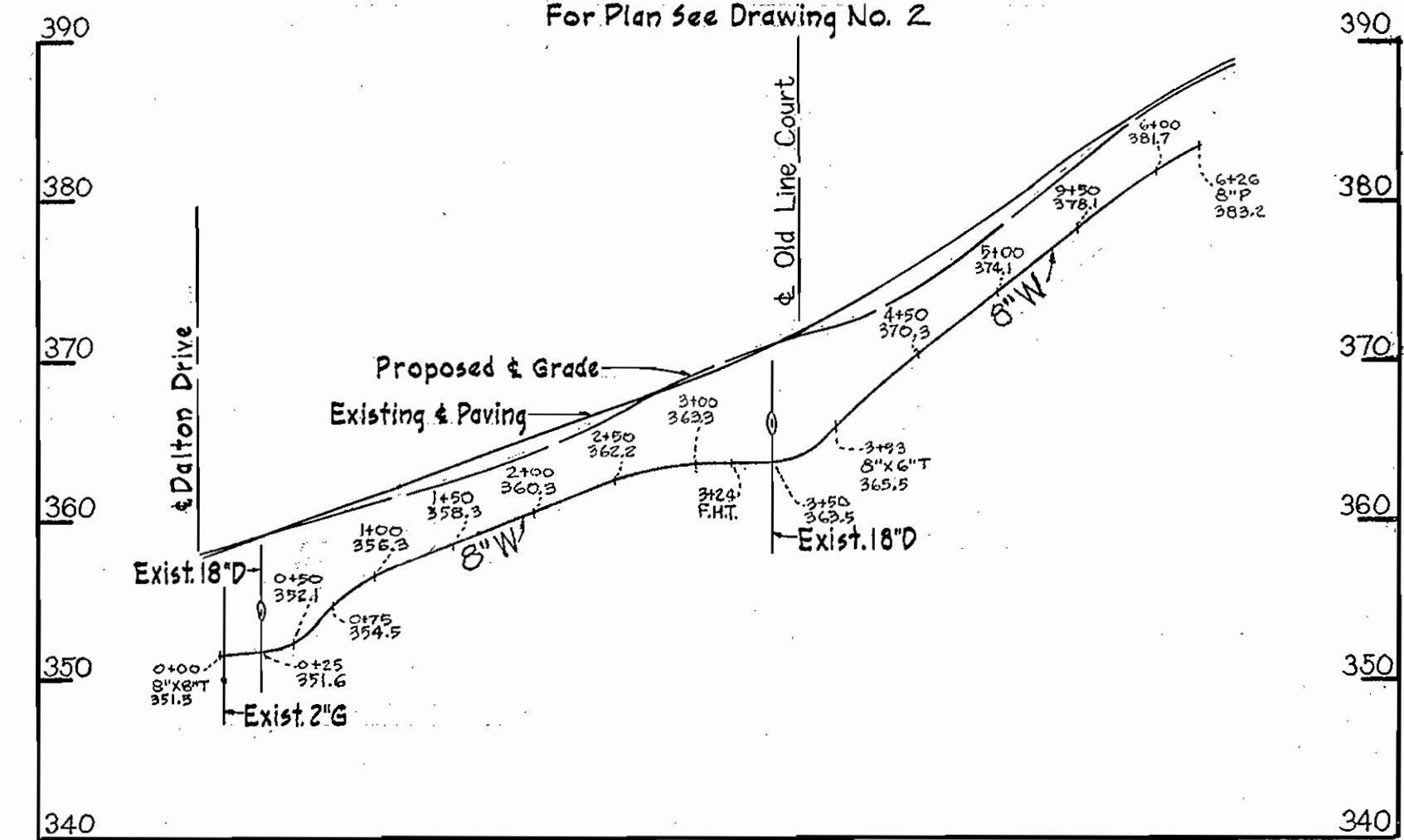
DIAMONDBACK DRIVE

For Plan See Drawing No. 1



OLD LINE DRIVE

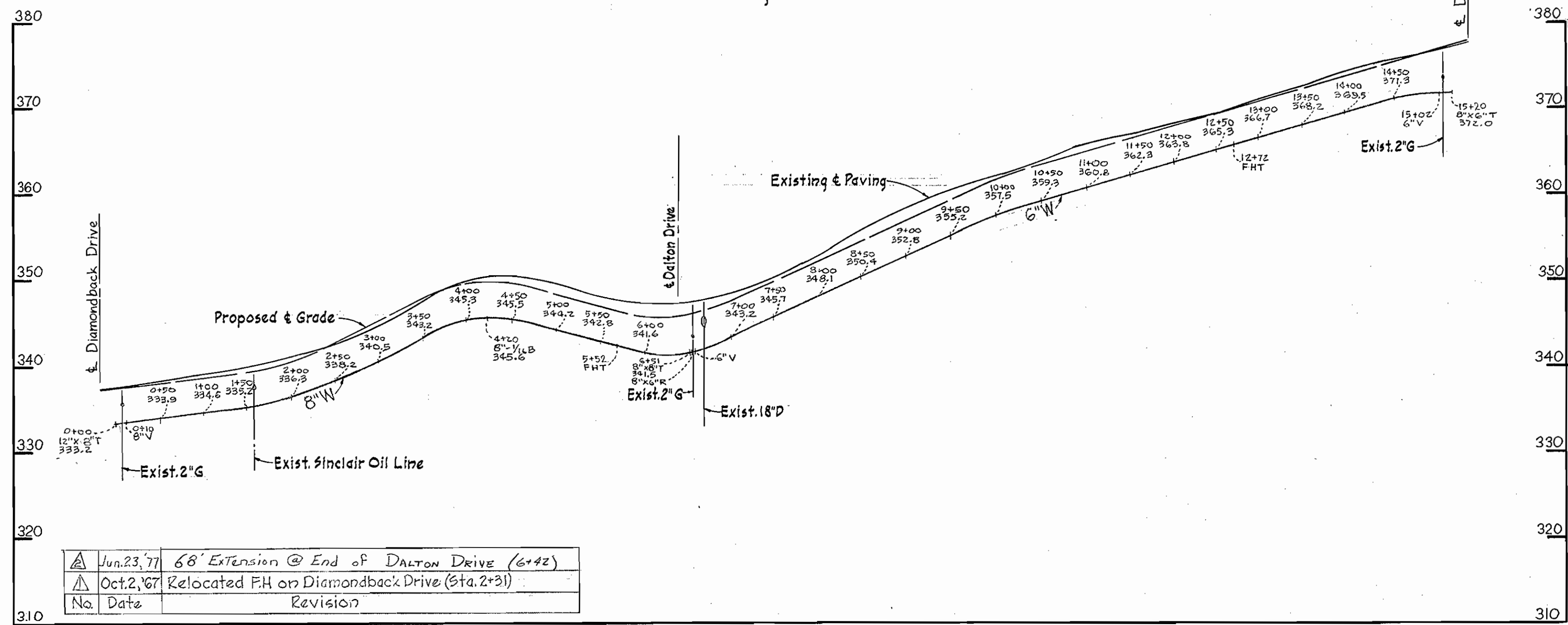
For Plan See Drawing No. 2



ALL WATER MAINS ARE CAST IRON

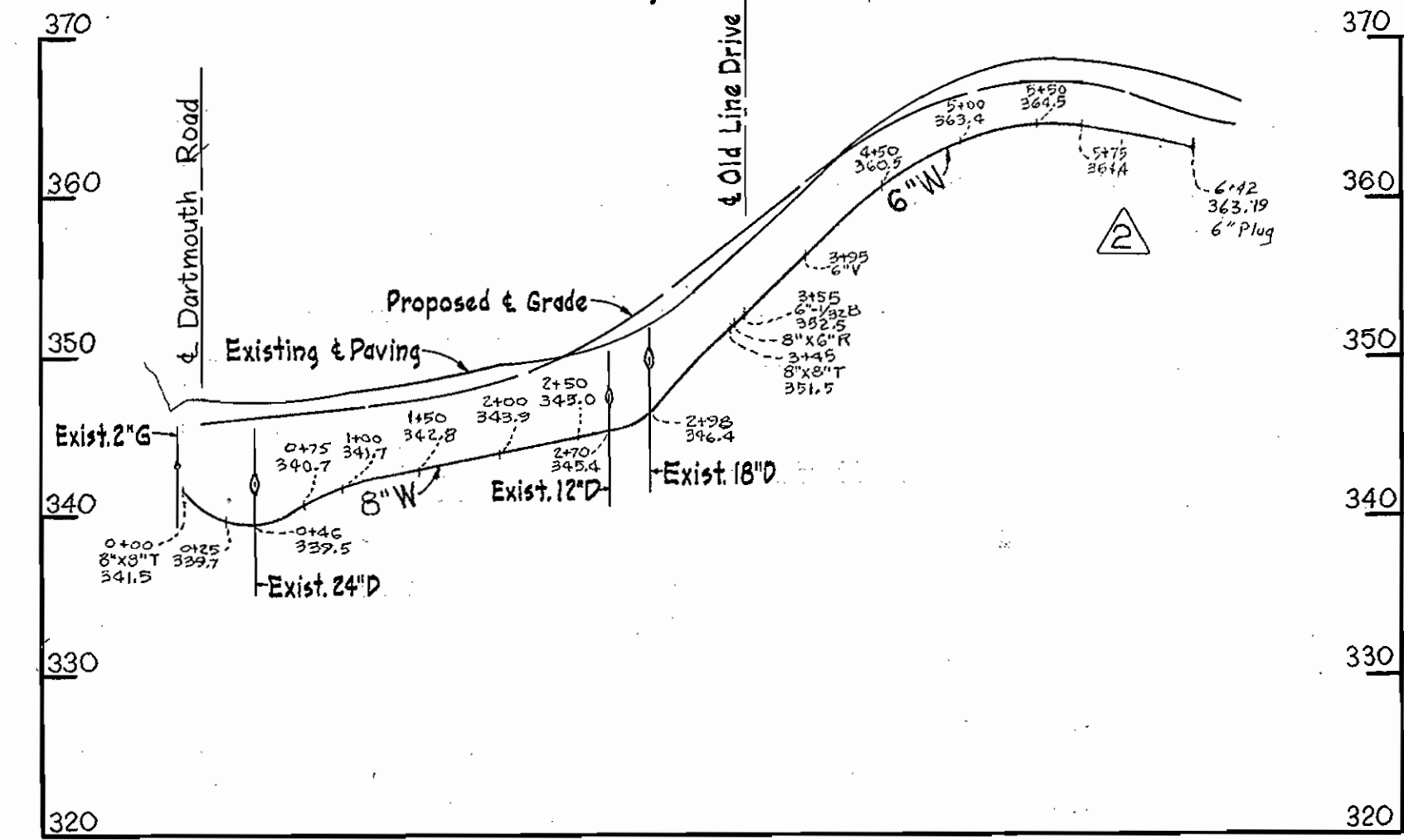
DARTMOUTH ROAD

For Plan See Drawing No. 1

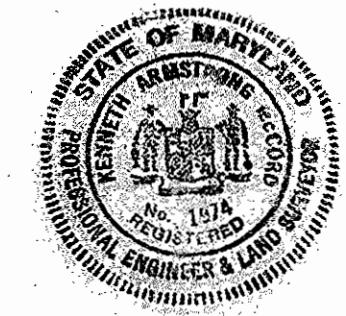


DALTON DRIVE

For Plan See Drawing No. 2



| | | |
|-----|--------------|---|
| ▲ | Jun. 23, '77 | 68' Extension @ End of Dalton Drive (6" x 2) |
| ▲ | Oct. 2, '67 | Relocated FH on Diamondback Drive (Sta. 2+31) |
| No. | Date | Revision |



Handwritten signature

WHITMAN, REQUARDT & ASSOCIATES
ENGINEERS
1304 ST. PAUL ST.
BALTIMORE, MARYLAND

HOWARD COUNTY METROPOLITAN COMMISSION
DATE 8-31-67 *W O Robert*
CHIEF ENGINEER

CONTRACT NO. 202-W

PROFILES OF WATER MAINS

ELECTION DISTRICT GUILFORD NO. 6

DRAWING NO. 3 OF 3
SCALE H-1"=100' V-1"=10'

Dalton Contract No. 202-W