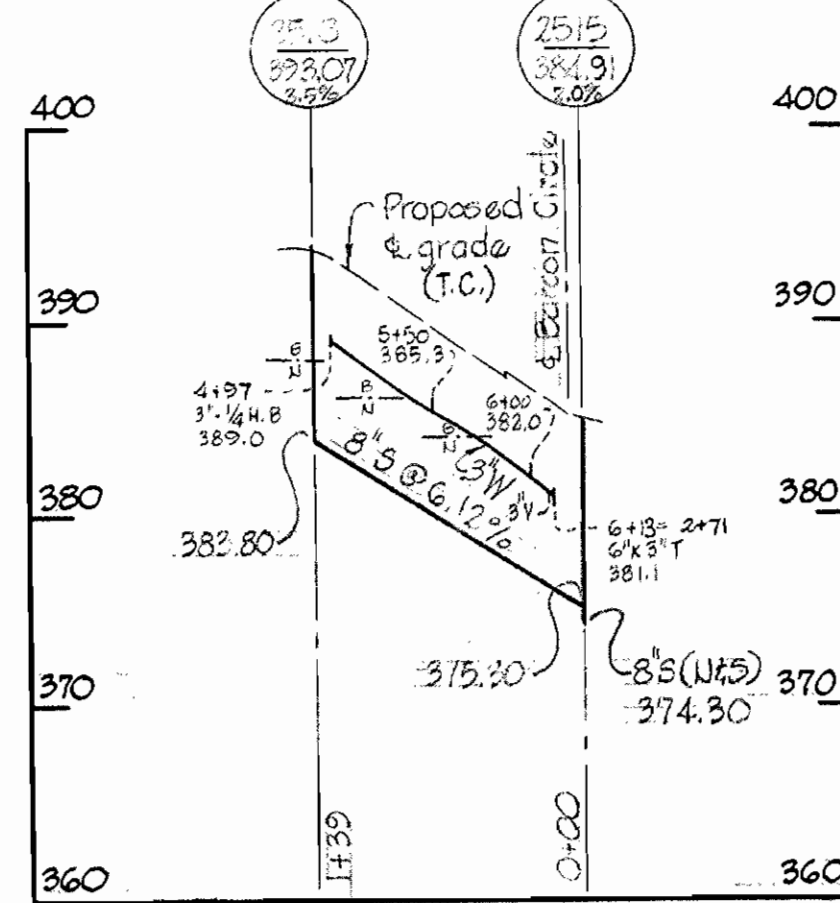
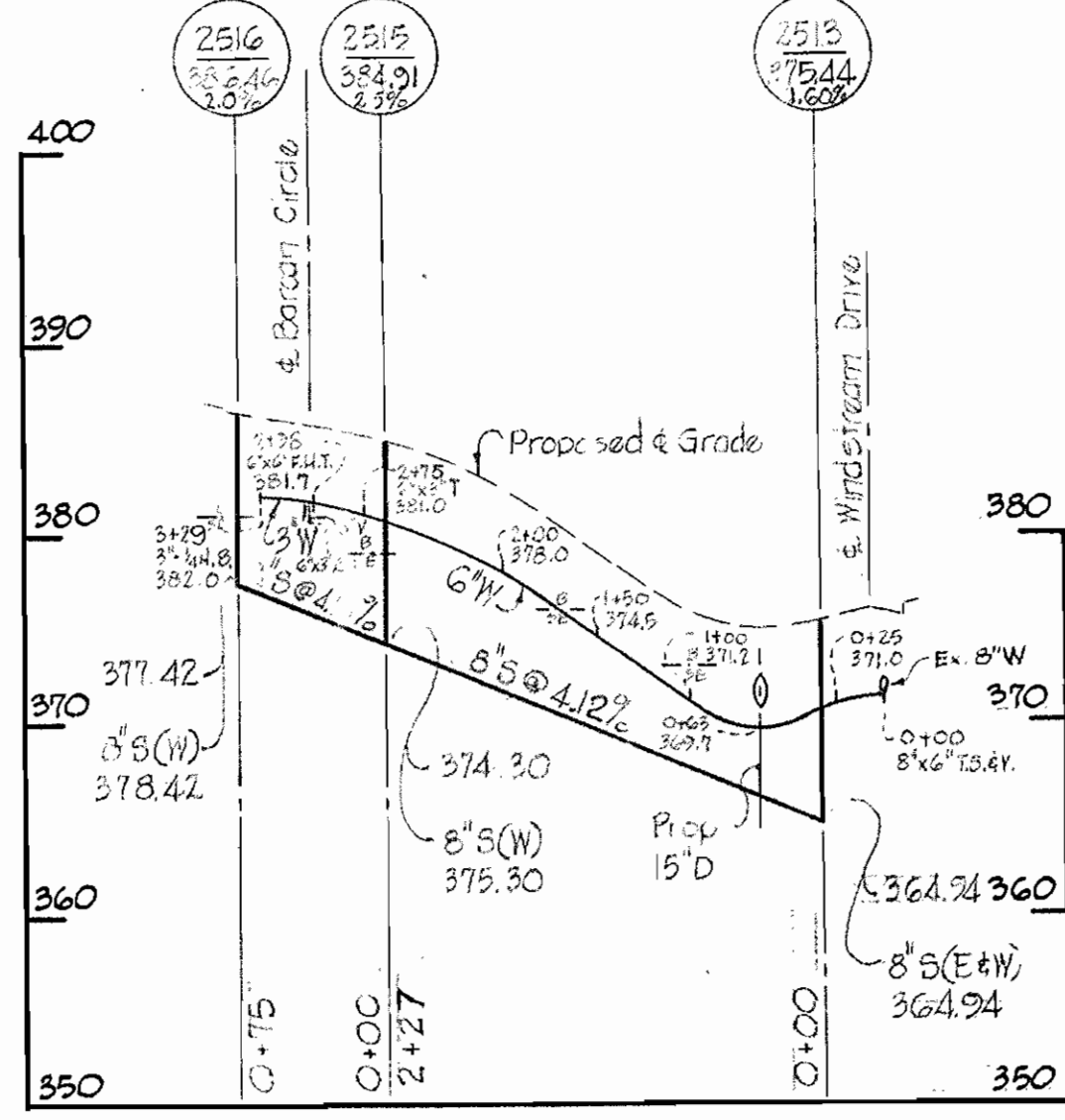
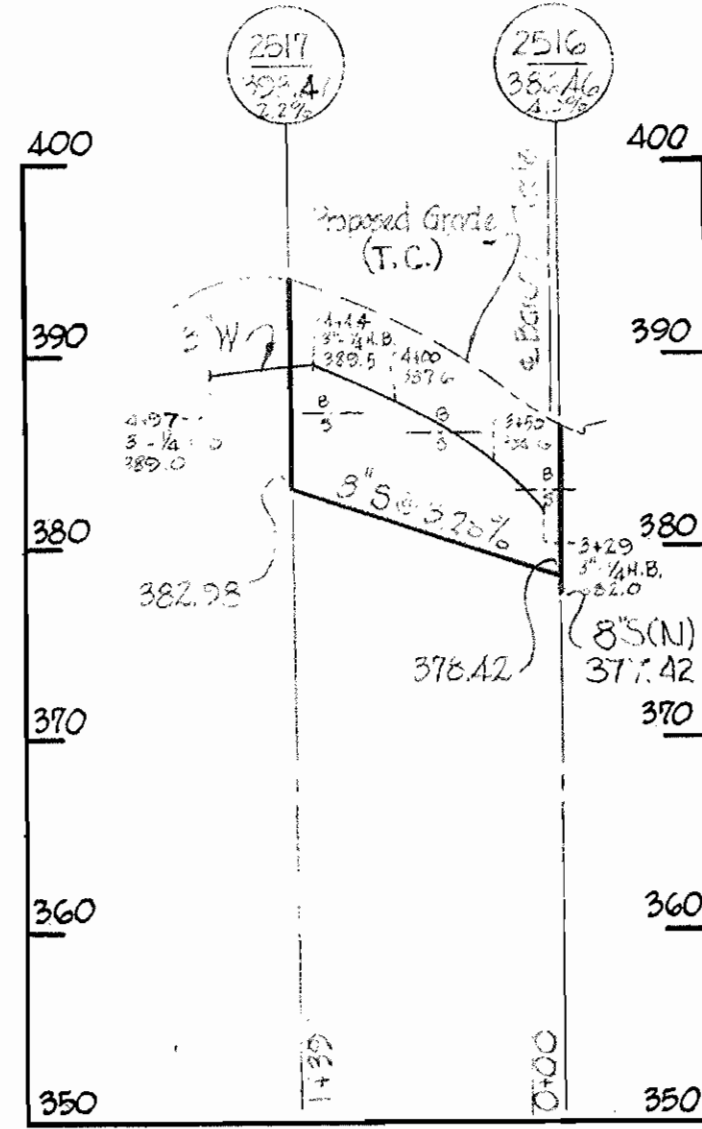


BARCAN CIRCLE (South side)

BARCAN CIRCLE

BARCAN CIRCLE (North side)

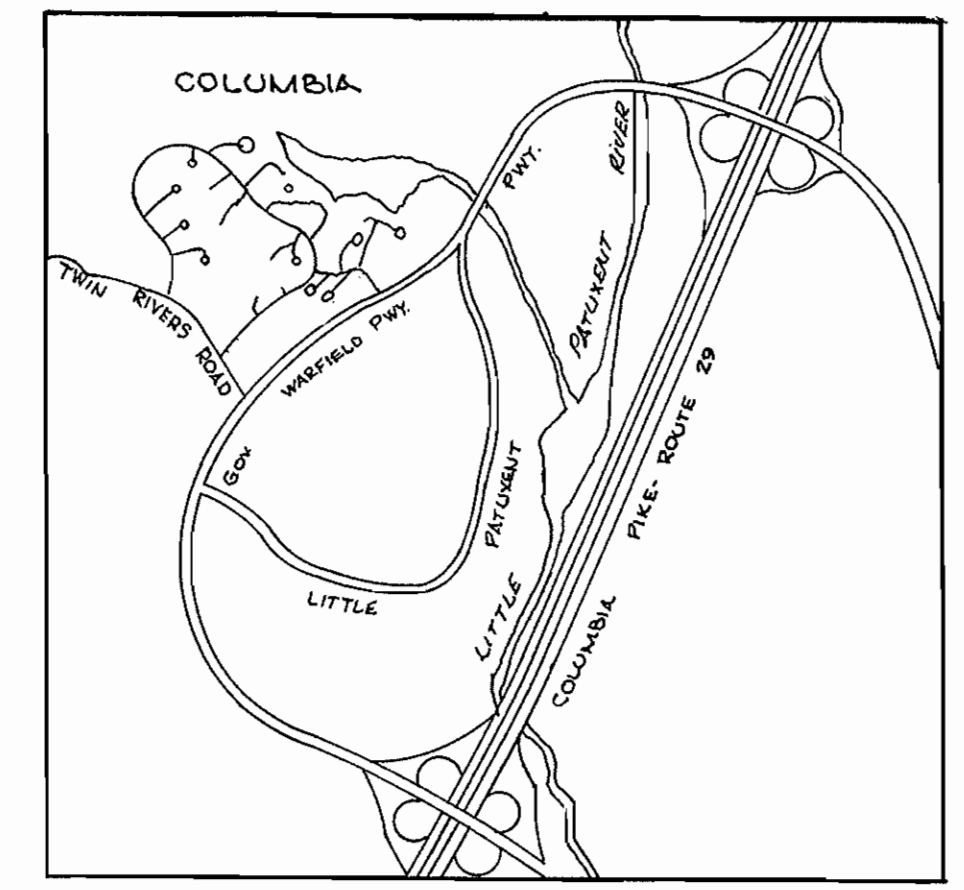


GENERAL NOTES

1. Approximate location of existing mains are shown. The Contractor shall take all necessary precautions to protect existing mains and services and maintain uninterrupted supply. Any damage incurred shall be repaired immediately.
2. All pipe elevations shown are invert elevations.
3. The Contractor shall test pit existing utilities, which will be encountered during construction, a minimum of two weeks in advance of construction operations.
4. For all standard details see standards bound in specifications.
5. Bury line elevations on fire hydrants shall be set to elevations shown on drawings.
6. All fire hydrants shall be buttressed with concrete in accordance with Standard Detail W4.
7. Clear all utilities by a minimum of 6'; clear all poles by 2' minimum or tunnel as required.
8. All water mains to be C.I.P. or D.I.P. and have a minimum of 3 1/2' cover.
9. Block all fittings with concrete, see standard details bound in specifications.
10. The Contractor shall provide a joint in a sewer mains within 2' minimum of exterior manhole walls.
11. All fittings used for double house connections to be included in the unit price bid for furnishing and laying water house connections.

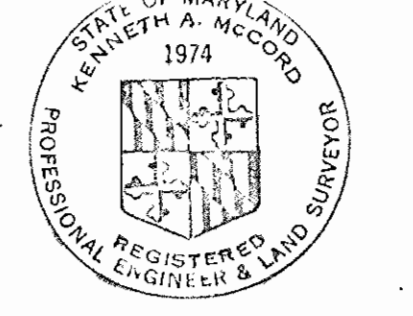
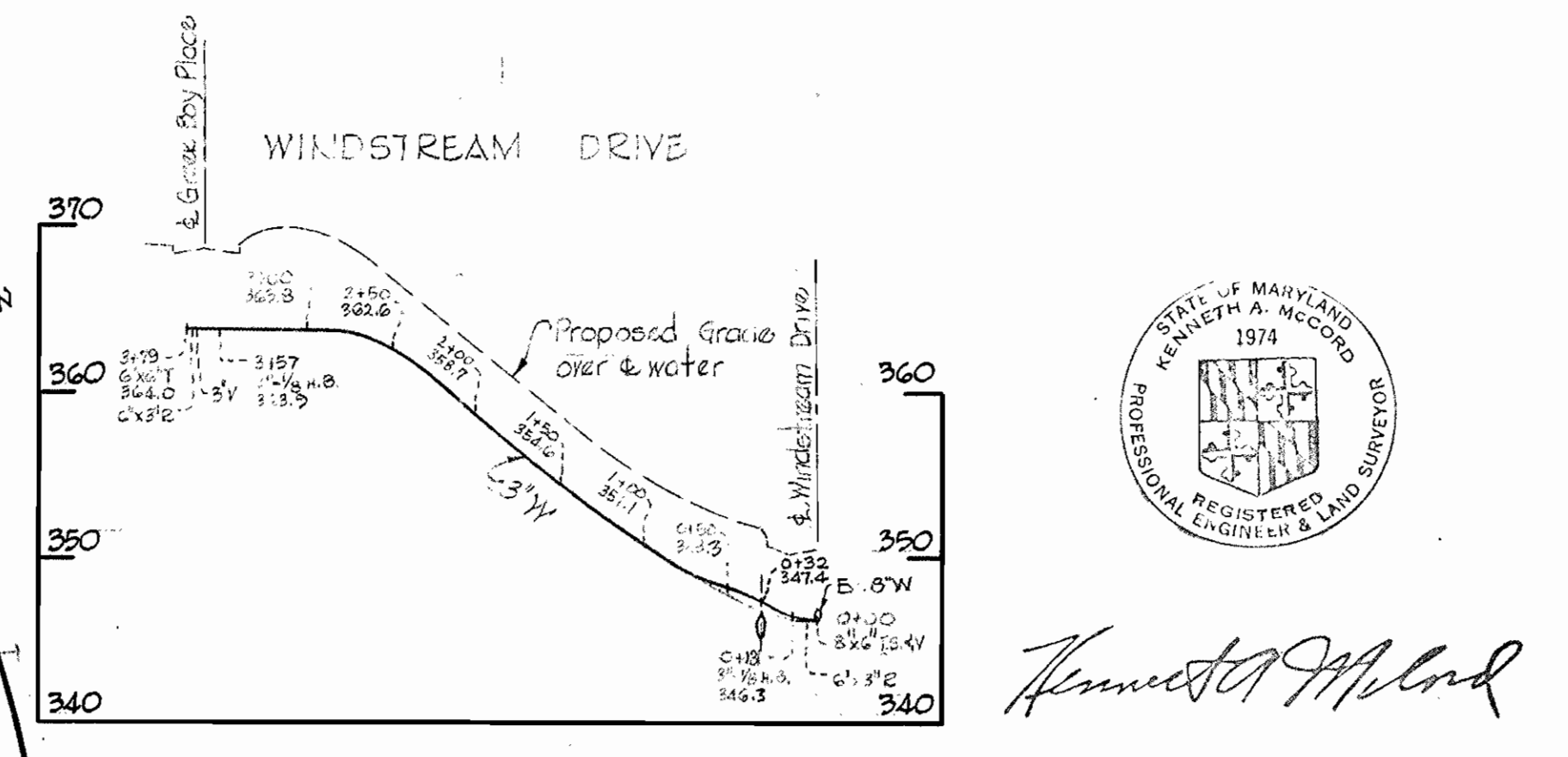
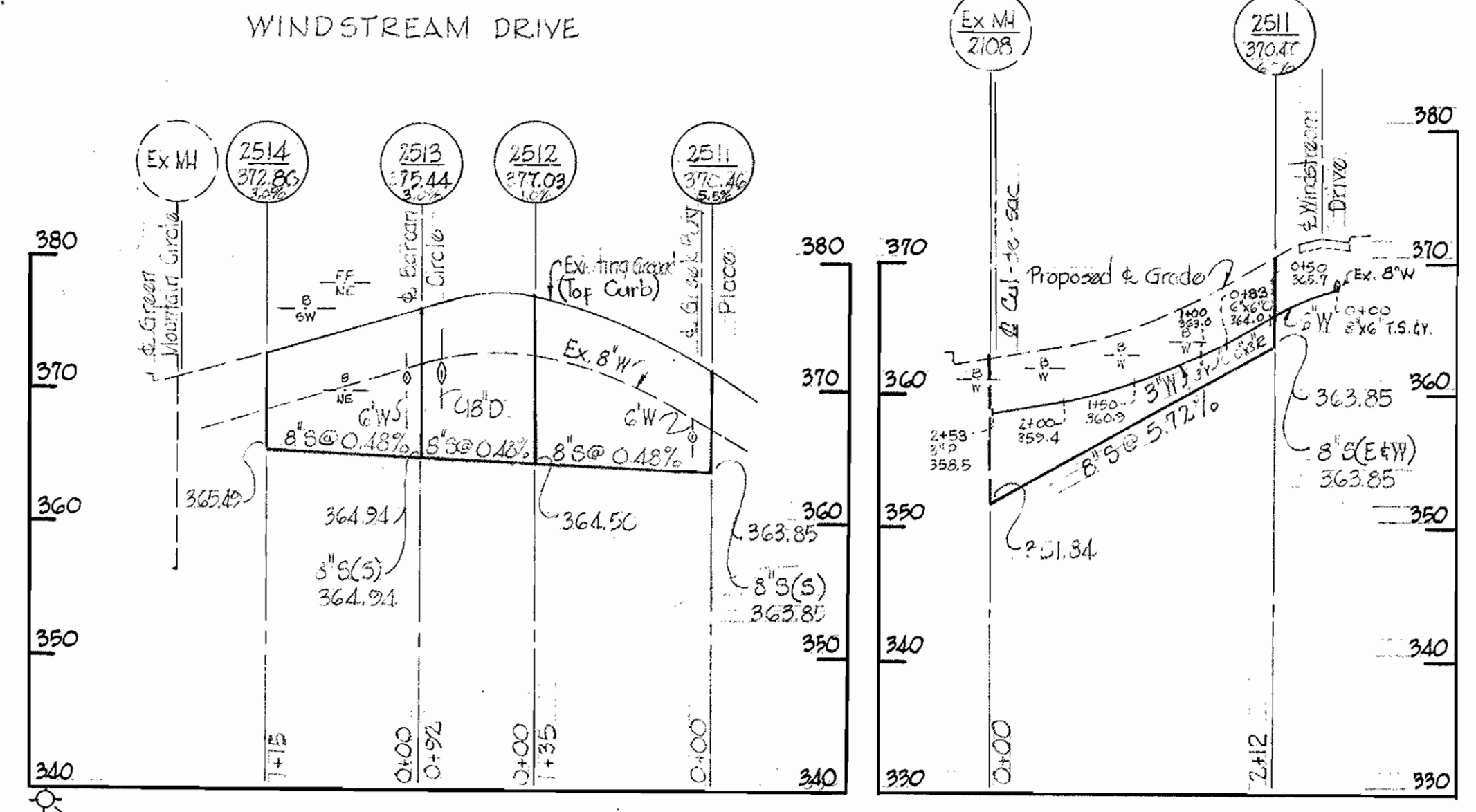
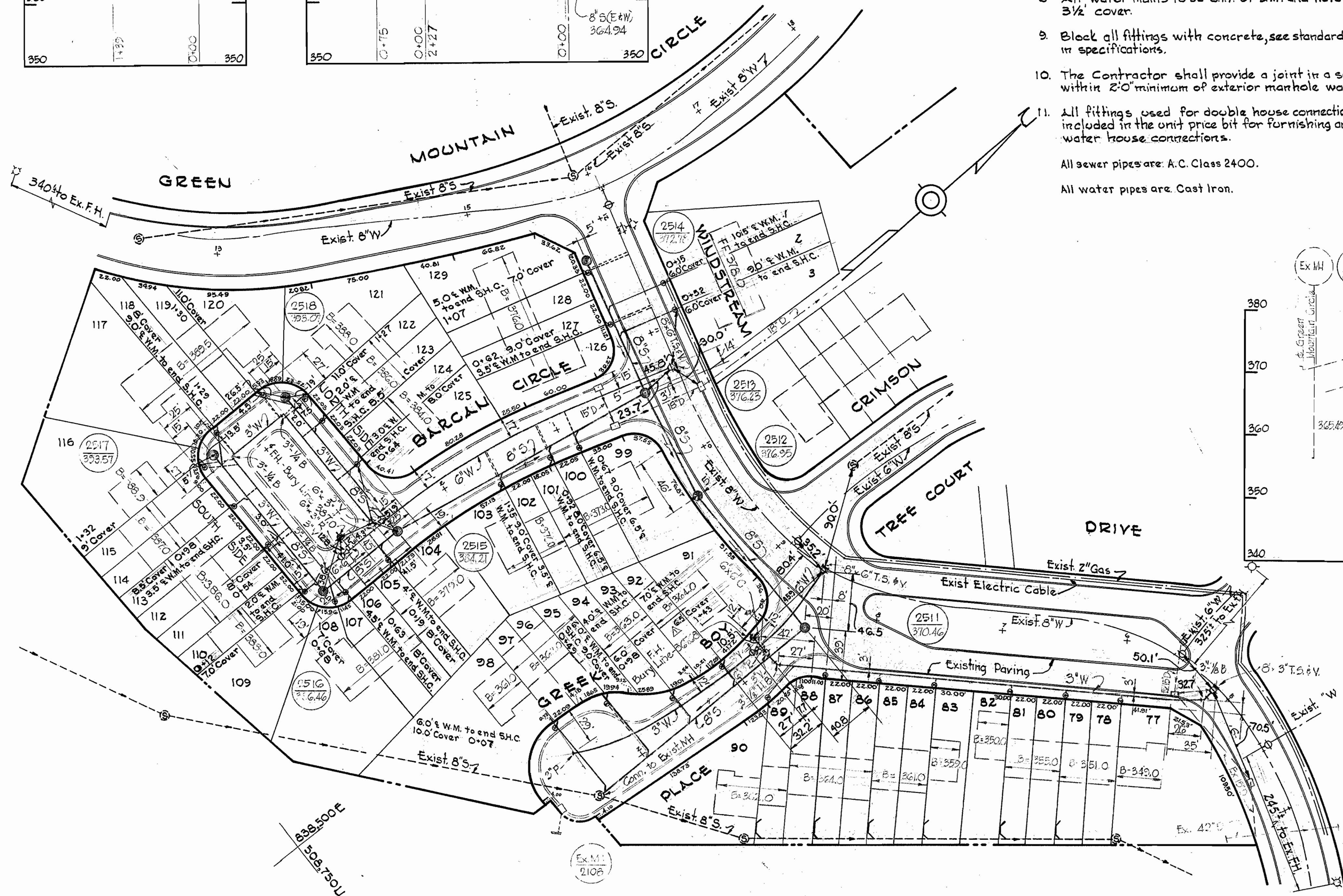
All sewer pipes are: A.C. Class 2400.

All water pipes are: Cast Iron.



VICINITY MAP

Scale: 1" = 2,550'



Kenneth M. Record
 Kenneth M. Record
 Registered Professional Engineer & Land Surveyor
 State of Maryland, No. 1974

| | |
|---------|---|
| Revised | Revised Bury Line Elevation on FH Greek Boy Place |
| Date | Revision |

Russet Ridge II
 Contract 200 W85

| | | | | | | |
|--|---|-----------------------------|--|--|---------------------------|-----------------------|
| WHITMAN, REQUARDT & ASSOCIATES ENGINEERS 1304 ST. PAUL ST. BALTIMORE, MARYLAND | HOWARD COUNTY METROPOLITAN COMMISSION 11-15-67 DATE <i>W. O. Liburt</i> CHIEF ENGINEER | CONTRACT NO. 200 W85 | PLAN & PROFILE OF SEWER MAINS | COLUMBIA VILLAGE OF WILDE LAKE ELECTION DISTRICT CLARKSVILLE No.5 | DRAWING NO. 1 OF 1 | SCALE AS SHOWN |
|--|---|-----------------------------|--|--|---------------------------|-----------------------|

W. O. 5735-Z AS BUILT AUGUST 2, 1968 JANUARY 30, 1968

WS 200-WS/1