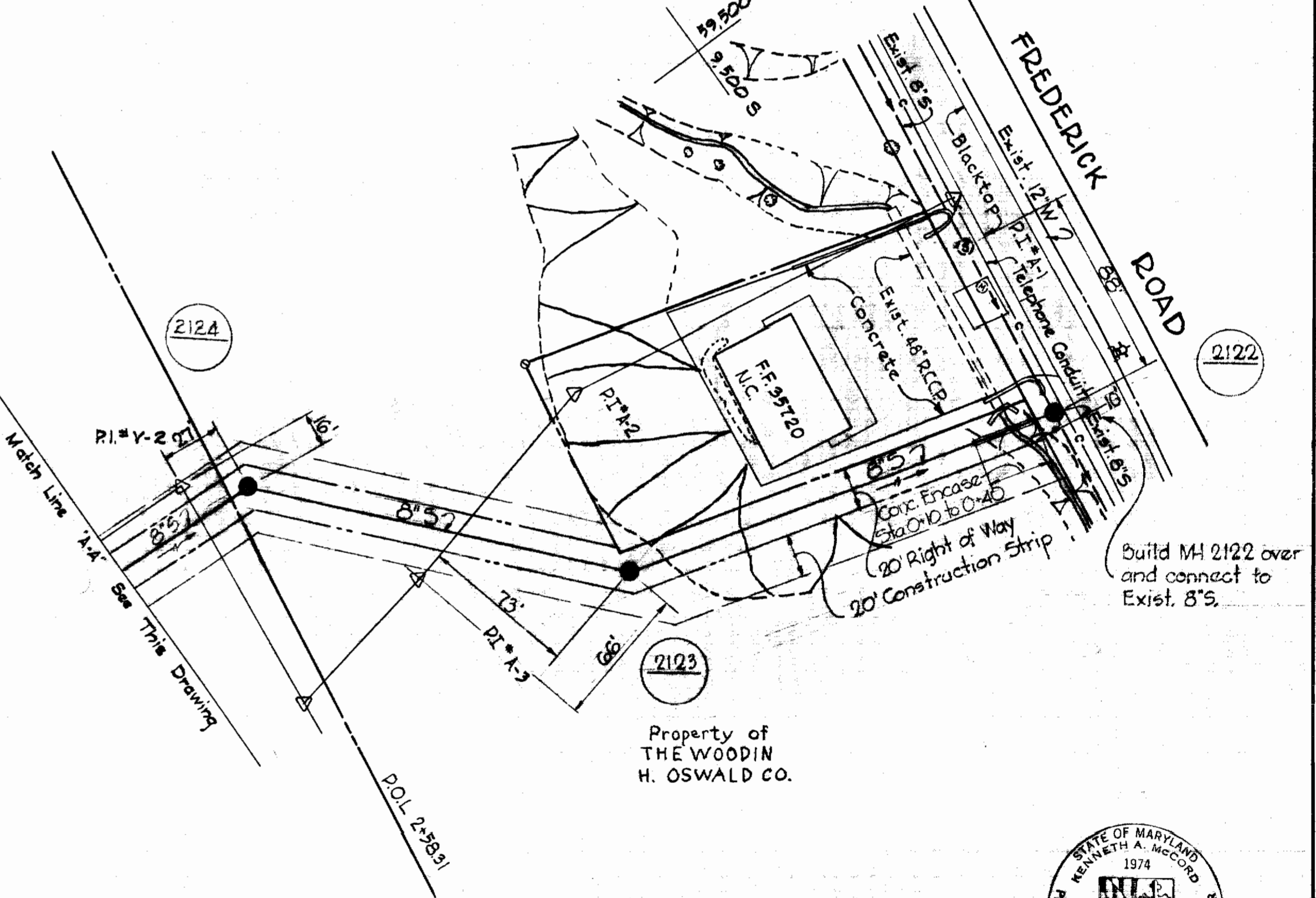
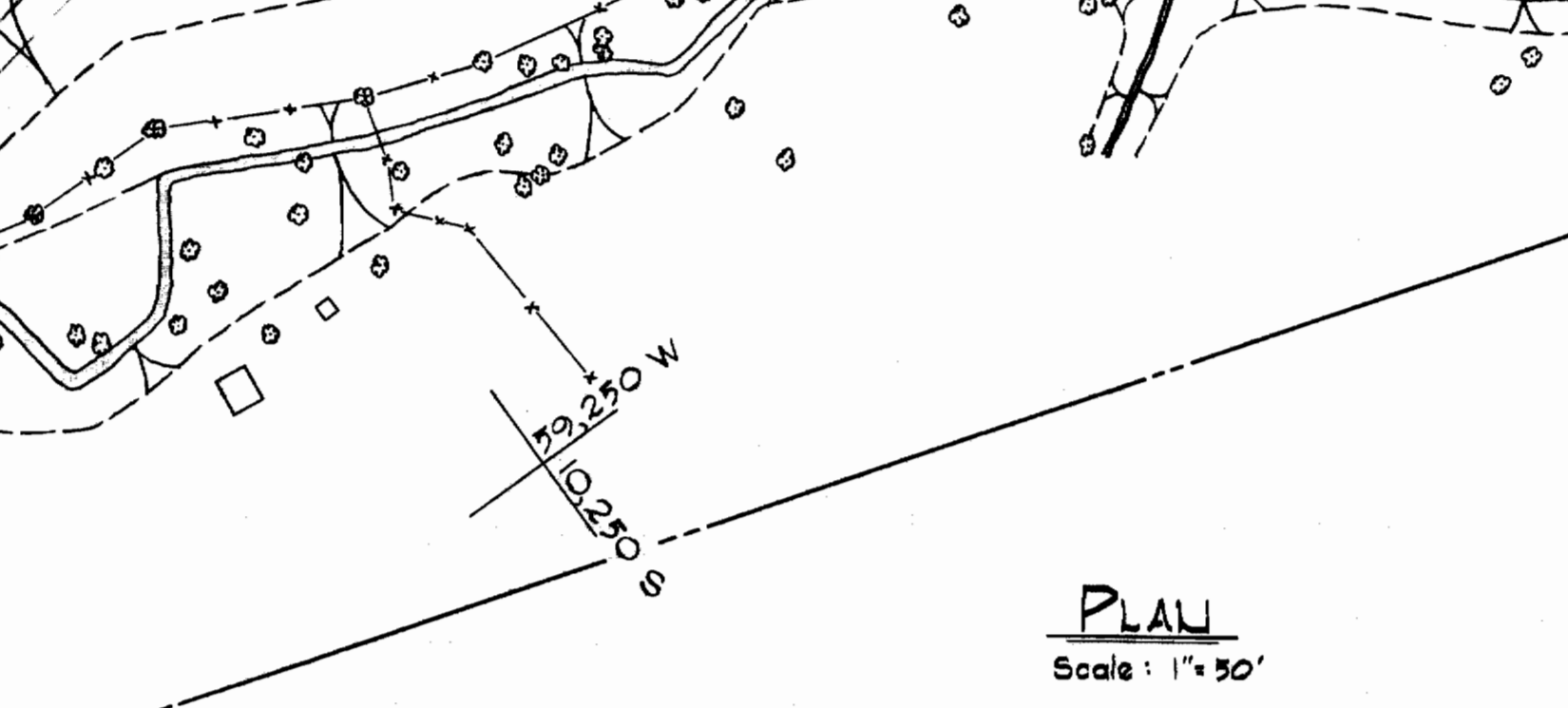
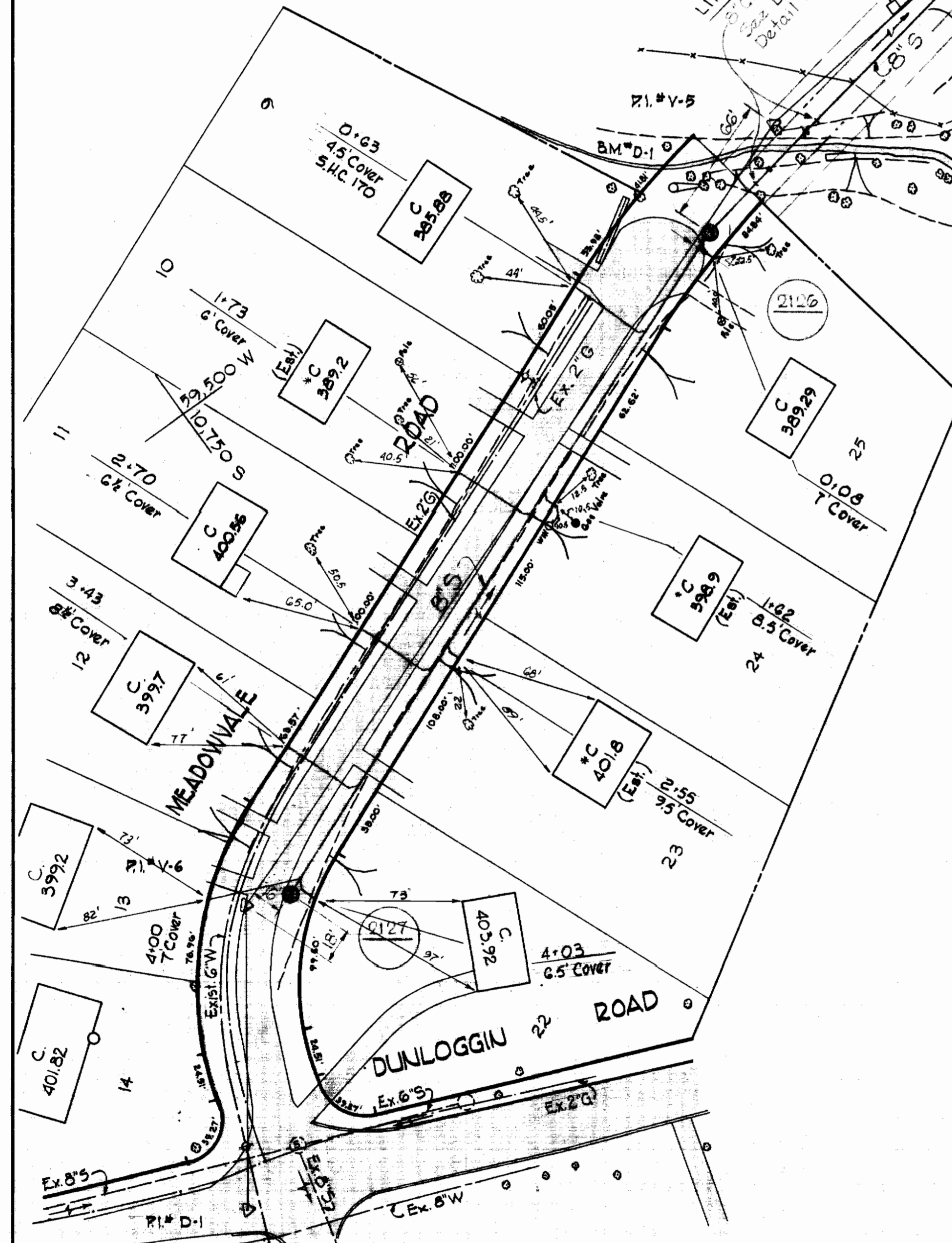


VICINITY MAP

Scale: 1" = 1/2 MILE

WR&A B.M.# D-1 Elev. 381.51
R.R. spike in base of 8" Wild Cherry tree
25' North of North end of Meadowvale Rd.

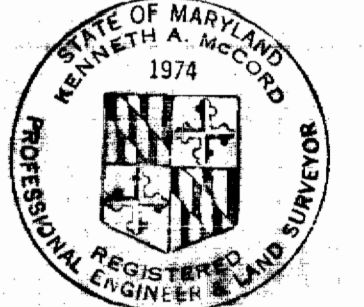
WR&A B.M.# 25-D Elev. 335.19
R.R. spike in base of Pole #462, S.E. corner
Frederick Rd & Dunloggin Rd. leading to St John's
Village, 1000' E. of St John's Lane.



PLAN
Scale: 1" = 30'

GENERAL NOTES

1. Approximate location of existing mains are shown. The Contractor shall take all necessary precautions to protect existing mains and services and maintain uninterrupted supply. Any damage incurred shall be repaired immediately.
2. All pipe elevations shown are invert elevations.
3. The Contractor shall locate existing utilities a minimum of two weeks in advance of construction operations in vicinity of utilities.
4. For all standard details see standards bound in Specifications.
5. Clear all utilities by a minimum of 6'. Clear all poles by 2'-0" minimum or tunnel as required.
6. All 8" C.I. sewer pipe to be Class 22, or 8" D.I. sewer pipe Class 2 unless otherwise noted.
7. Cost for erosion Checks to be included in the unit price bid for furnishing and laying 8 inch sewer mains.
8. The Contractor shall provide a joint in all sewer mains within 2'-0" of exterior manholes walls.
9. The Contractor shall notify the Telephone Company prior to any construction activities in the vicinity of Telephone Cables by calling collect anytime 393-3553 in Baltimore, Maryland.
10. All manholes shall be 40" inside diameter.



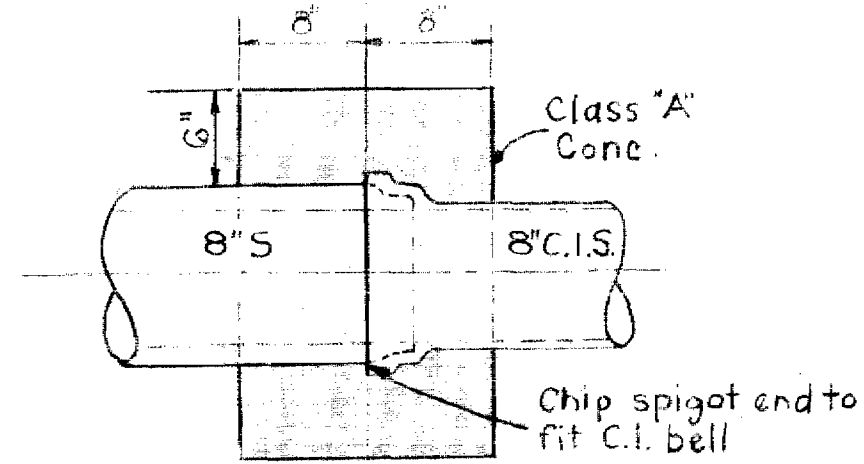
Kenneth A. McCord

Contract No. 197-5

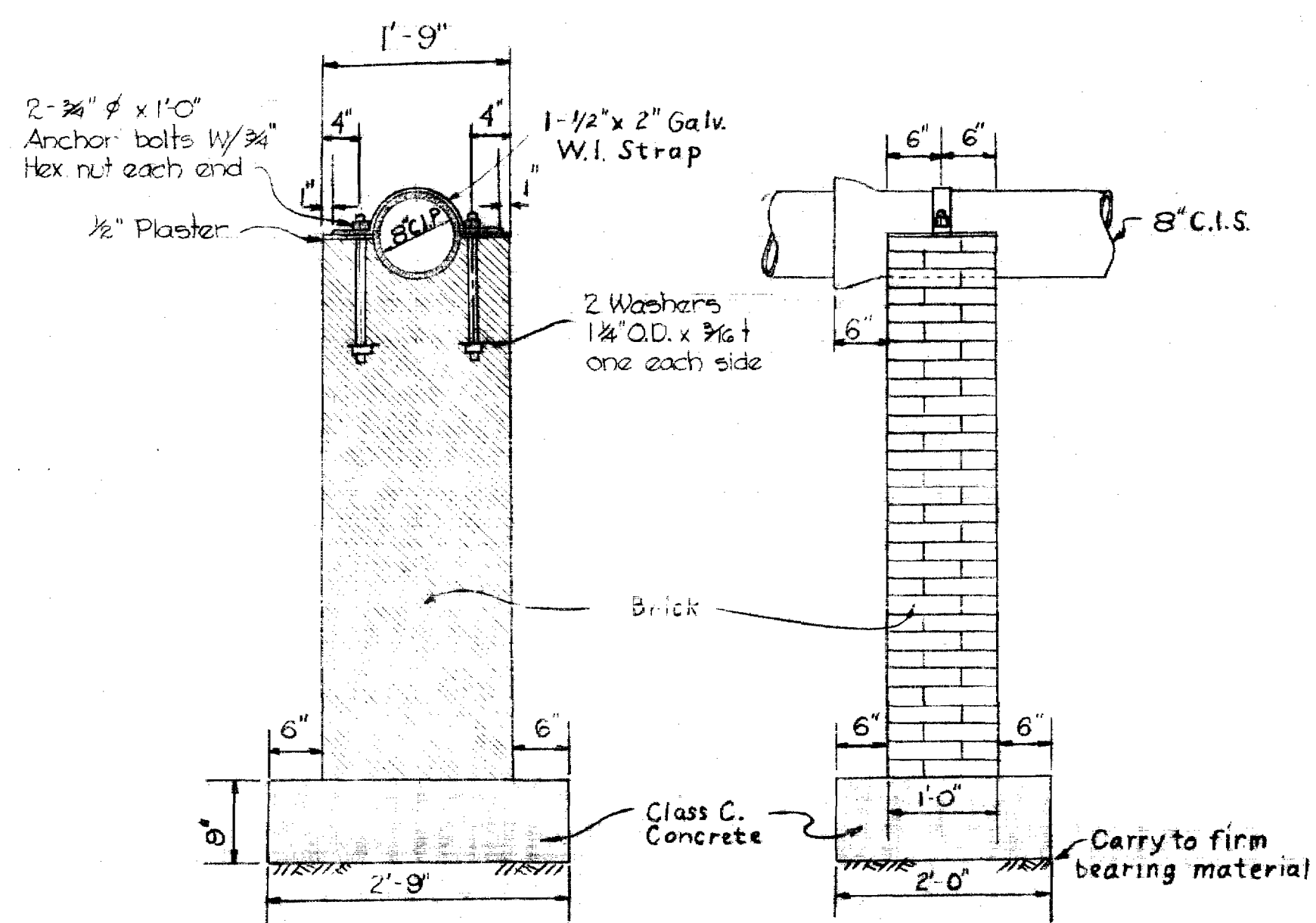
WHITMAN, REQUARDT & ASSOCIATES ENGINEERS 1304 ST. PAUL ST. BALTIMORE, MARYLAND	HOWARD COUNTY METROPOLITAN COMMISSION DATE: 11-15-67 CHIEF ENGINEER	CONTRACT NO. 197-5	PLAN OF SEWER MAINS	ELLICOTT CITY ELECTION DISTRICT NO. 2	DRAWING NO. 1 OF 2 SCALE AS SHOWN 10, 11, 5W, 10
---	---	--------------------	------------------------	--	--

197-S/1

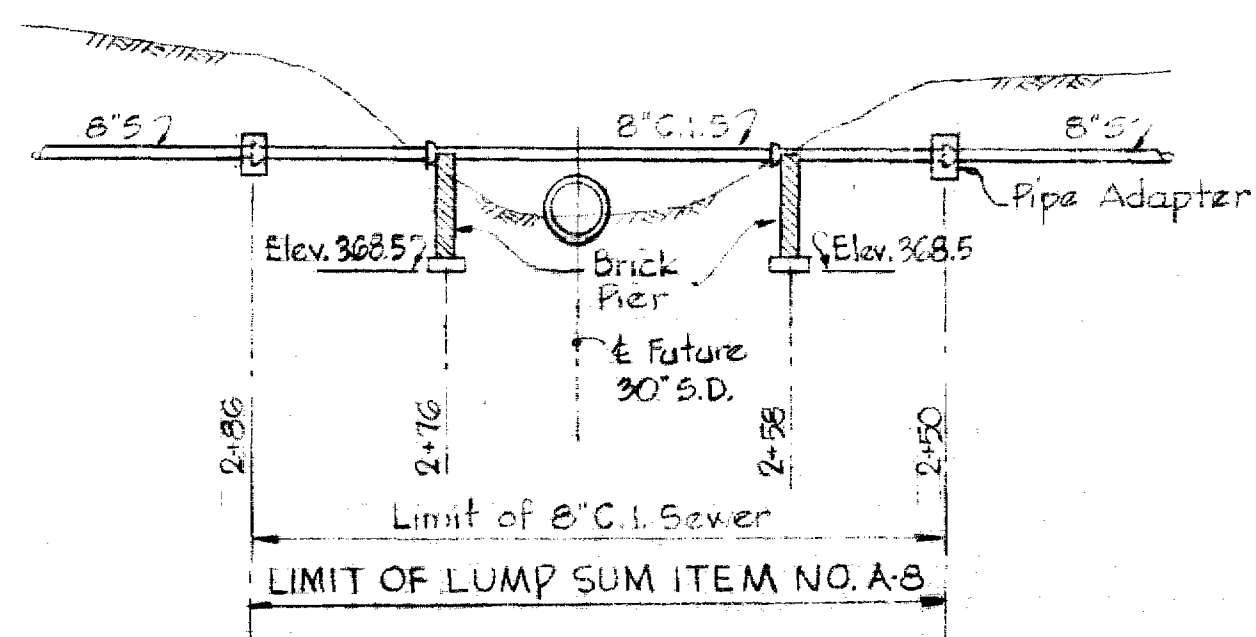
WS



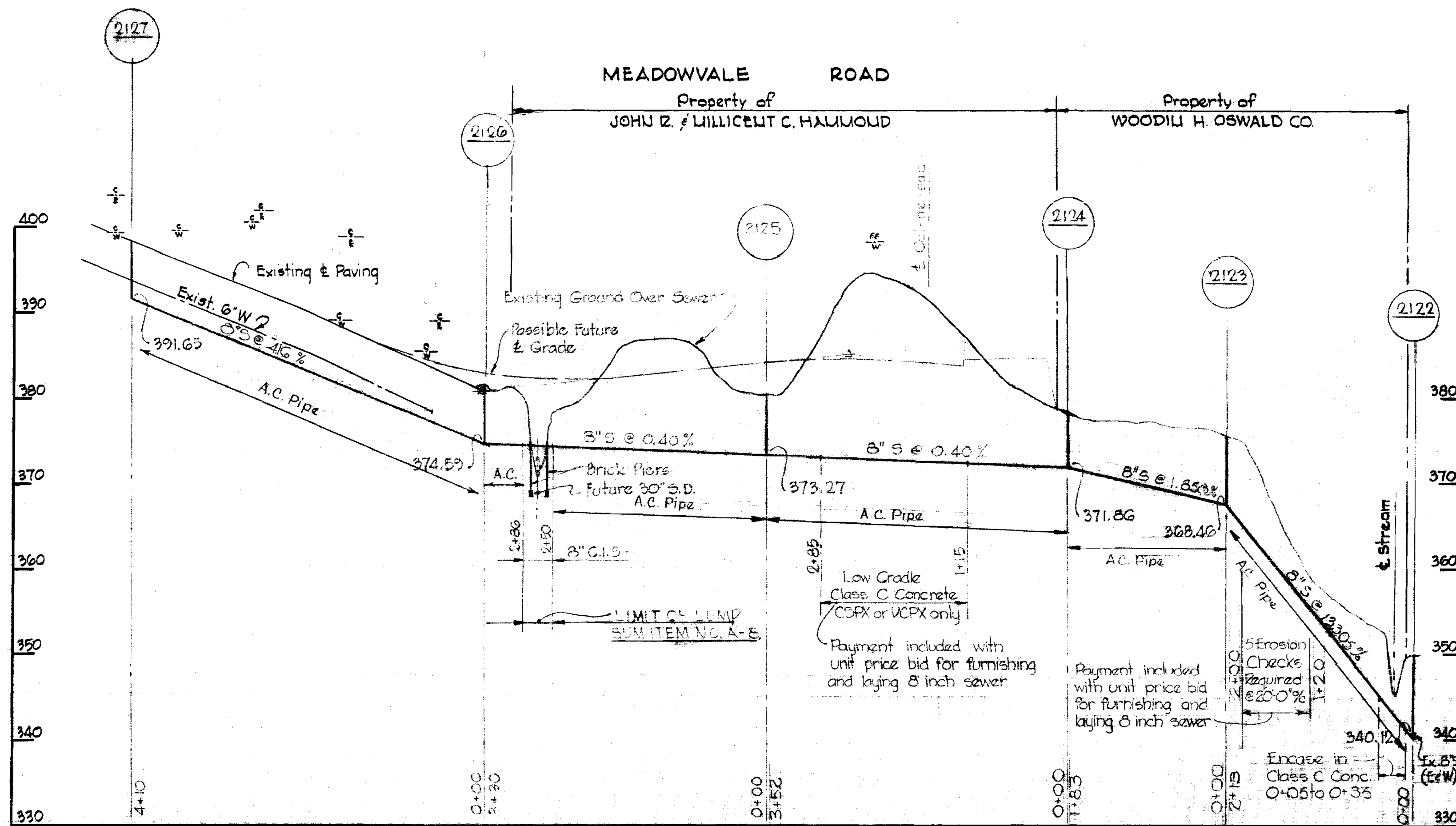
C.I. TO CONCRETE OR
V.C. PIPE ADAPTER
Scale 1"=1'-0"



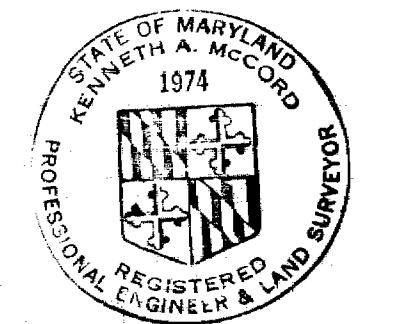
TYPICAL PIER DETAIL
Scale: 3/4"=1'-0"



DETAIL OF STREAM CROSSING
Scale: 1"=10' H & V.



PROFILE
Scale: H: 1"=100'
V: 1"=10'



Kenneth A. McCord

Contract No 197-5

WHITMAN, REQUARDT & ASSOCIATES ENGINEERS 1304 ST. PAUL ST. BALTIMORE, MARYLAND	HOWARD COUNTY METROPOLITAN COMMISSION DATE 11-15-67 <i>W. J. Filbert</i> CHIEF ENGINEER	CONTRACT NO. 197-S	PROFILE OF SEWER MAINS	ELLICOTT CITY ELECTION DISTRICT NO. 2	DRAWING NO. 2 OF 2 SCALE AS SHOWN
---	--	--------------------	---------------------------	--	--------------------------------------

15 197-S/2