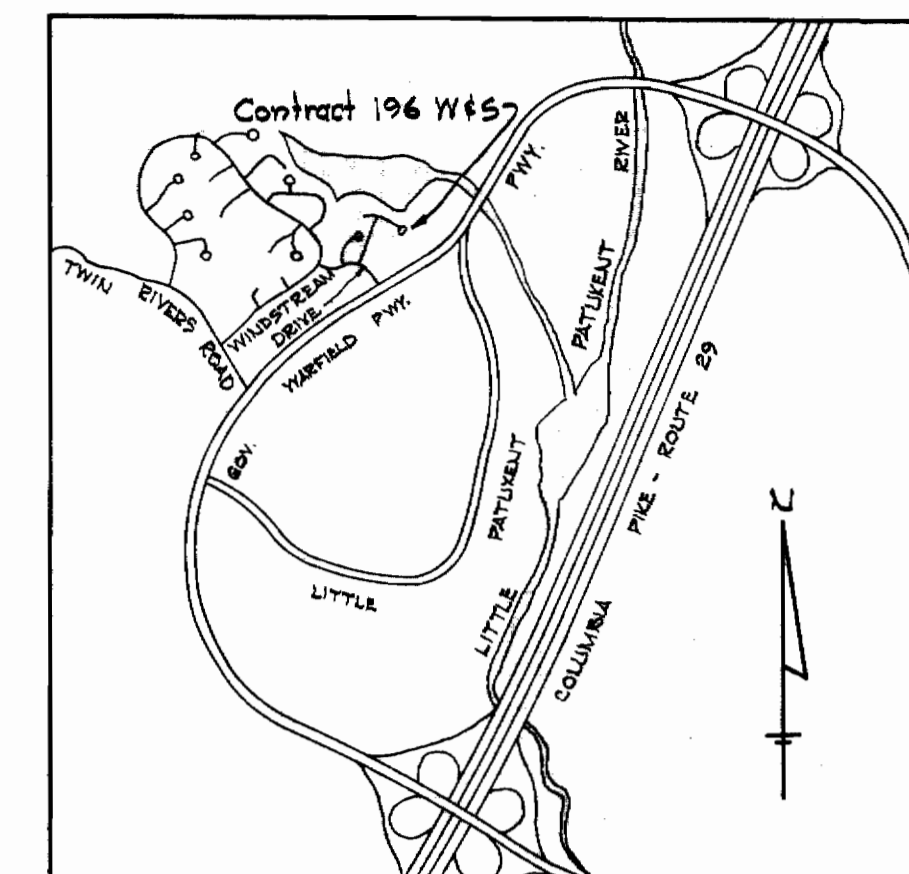
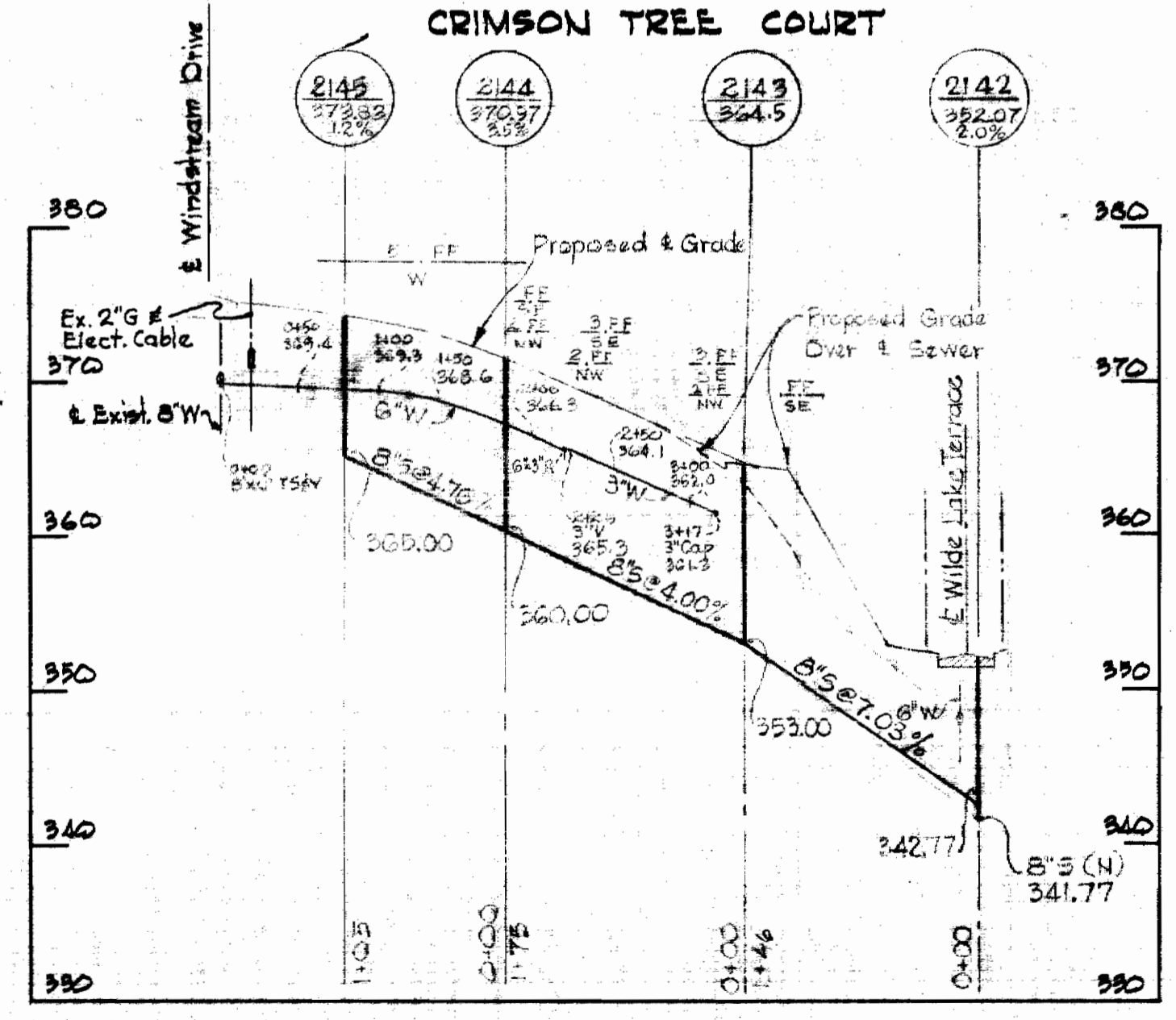
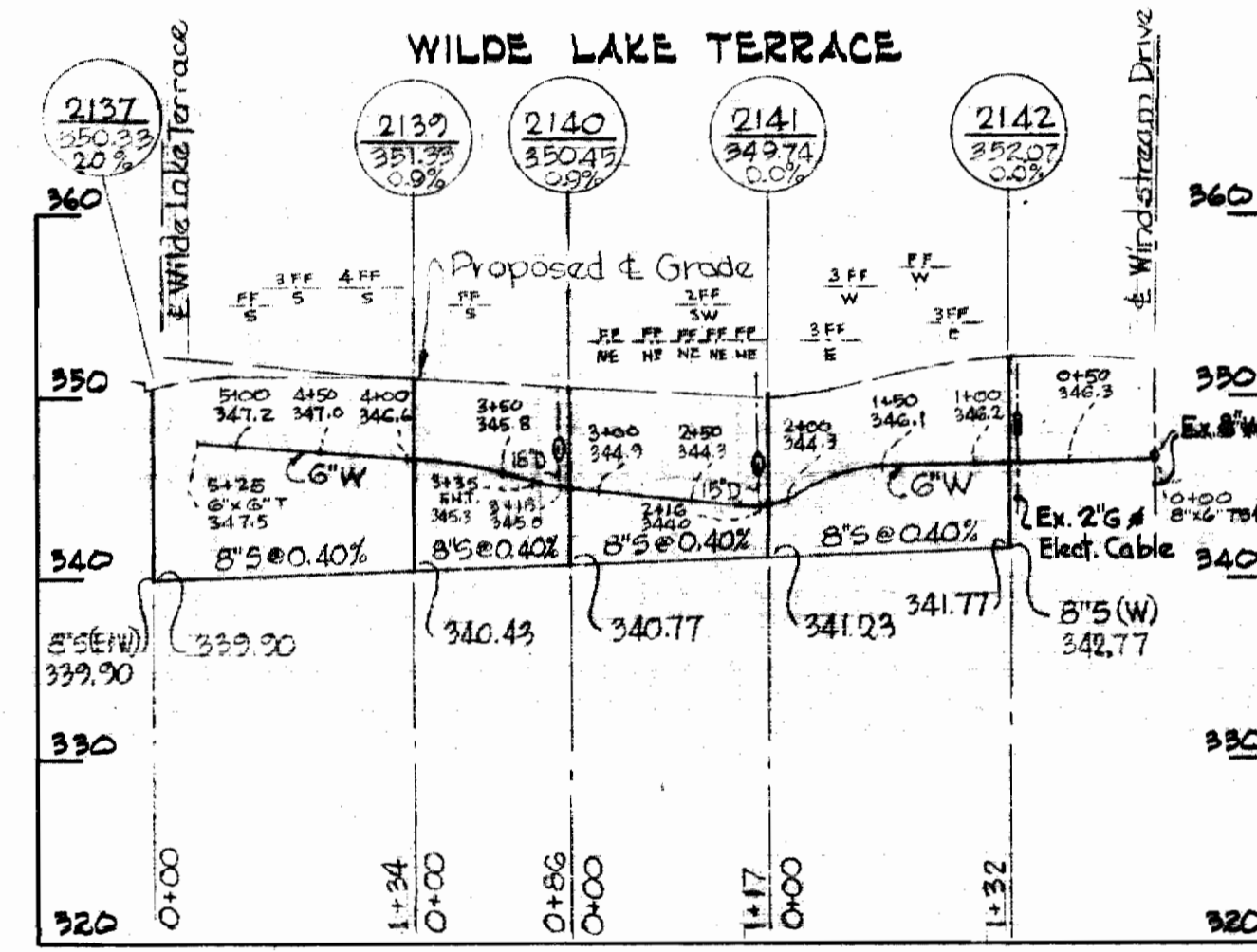
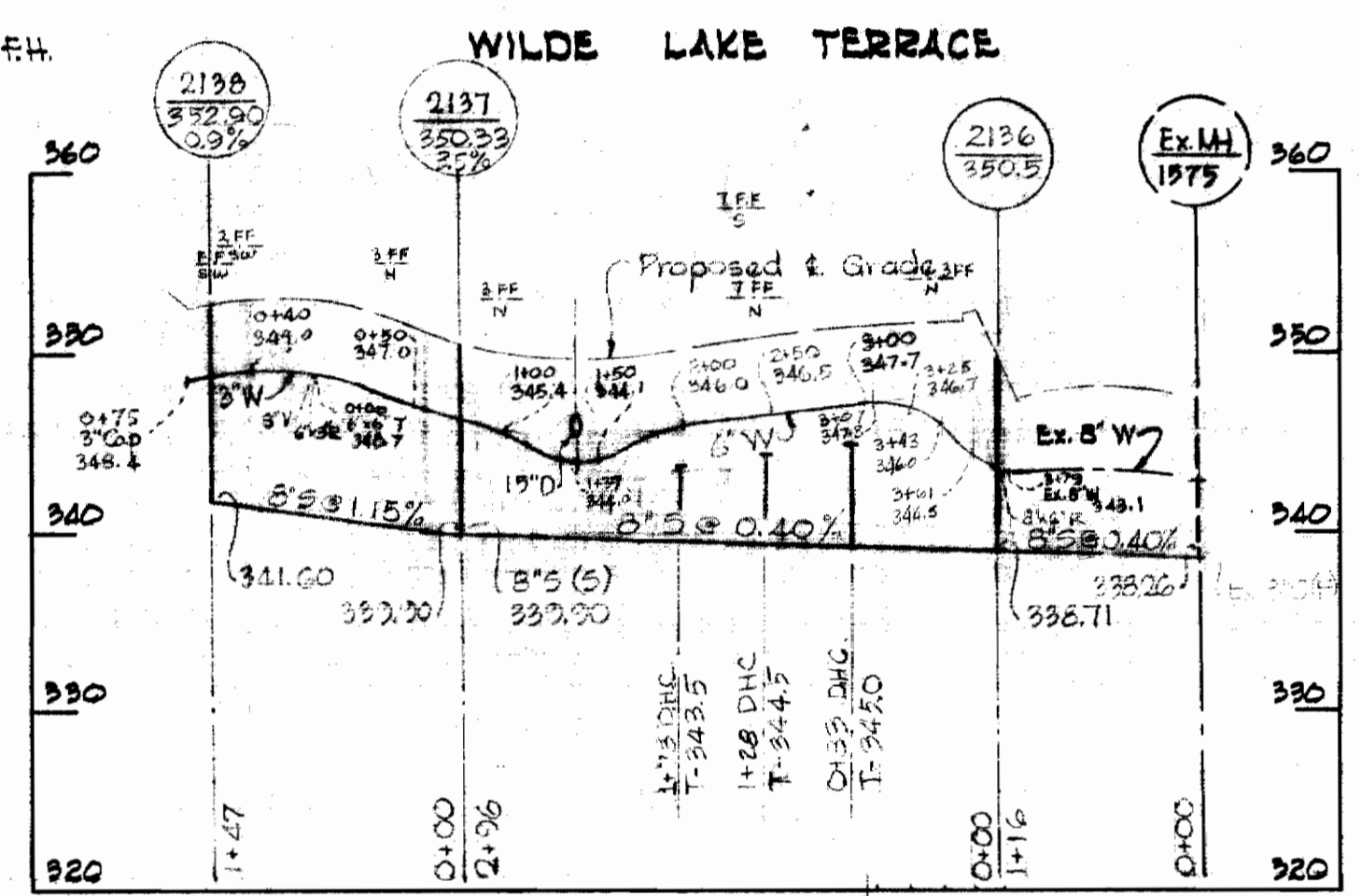
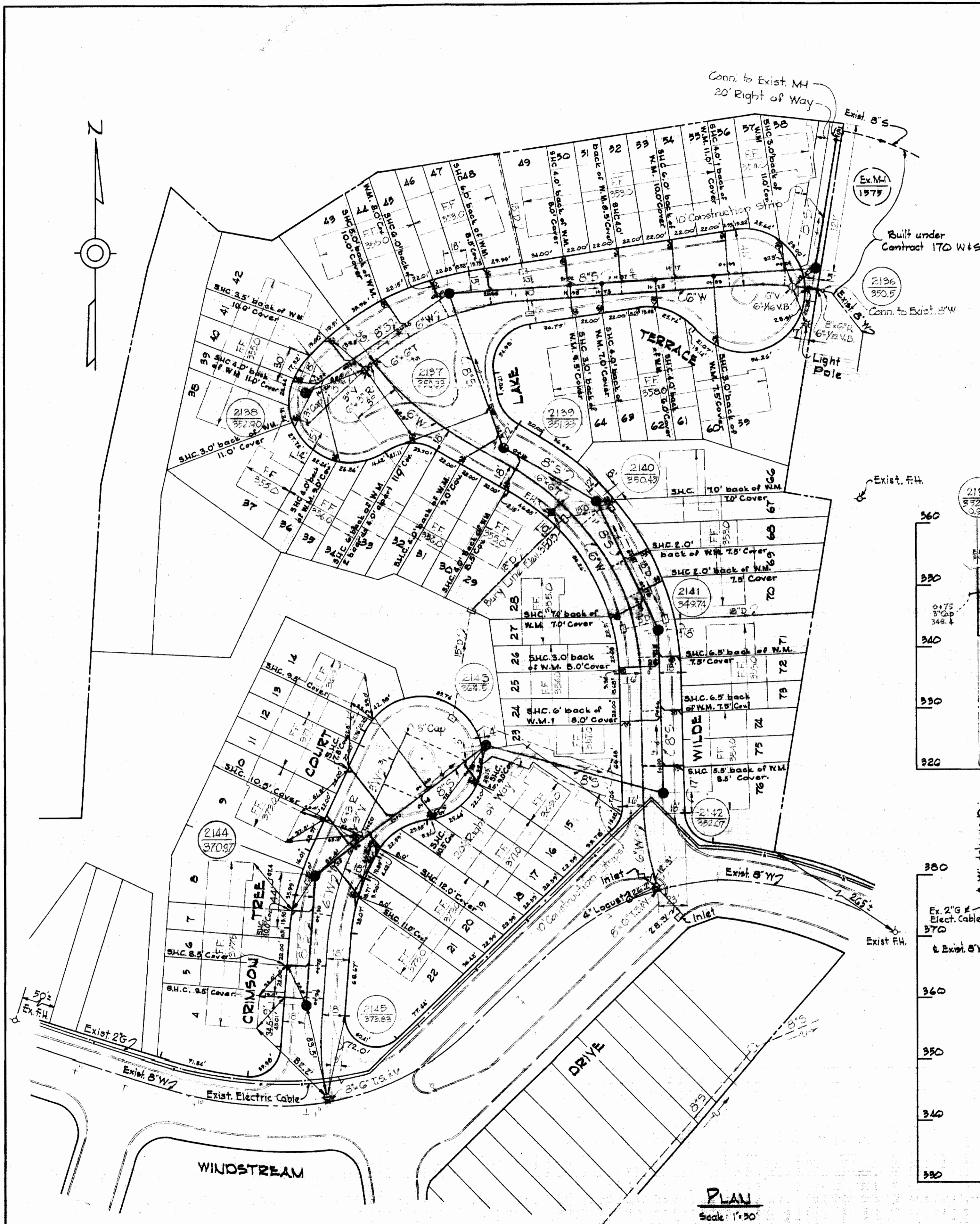


GENERAL NOTES

1. Approximate location of existing mains are shown. The Contractor shall take all necessary precautions to protect existing mains and services and maintain uninterrupted supply. Any damage incurred shall be repaired immediately.
2. All pipe elevations shown are invert elevation.
3. The Contractor shall test pit existing utilities, which will be encountered during construction, a minimum of two weeks in advance of operations.
4. For all standard details see standards bound in Specifications.
5. All water mains to be C.I.P. or D.I.P. and have a minimum of 3/4' cover.
6. Back all fittings with concrete, see standard details bound in Specifications.
7. Bury line elevations on fire hydrants shall be set to elevations shown on drawings.
8. All Fire Hydrants shall be buttressed with concrete in accordance with Standard Detail W-4.
9. Clear all utilities by a minimum of 6', clear all poles by 2'-0" minimum or tunnel as required.
10. The Contractor shall provide a joint in all sewer mains within 2'-0" minimum of exterior manhole walls.
11. All fittings used for double house connections to be included in the unit price bid for furnishing and laying water house connections.



VICINITY MAP
Scale: 1" = 2,330'



All Sewer pipe - Concrete
All Water mains - Cast Iron Pipe
Stakeout in Field Book No. 3939
Diary in Field Book No. 3949



Russell Ridge I
Contract 196 W45

WHITMAN, REQUARDT & ASSOCIATES
ENGINEERS
1304 ST. PAUL ST.
BALTIMORE, MARYLAND

HOWARD COUNTY METROPOLITAN COMMISSION
DATE: 8-9-67
W. O. Libert
CHIEF ENGINEER

CONTRACT NO. 196-W45

PLAN & PROFILE OF
SEWER MAINS

COLUMBIA
VILLAGE OF WILDE LAKE
ELECTION DISTRICT-CLARKSVILLE No.5

DRAWING NO. 1 OF 1
SCALE AS SHOWN

196-W5/1
WS