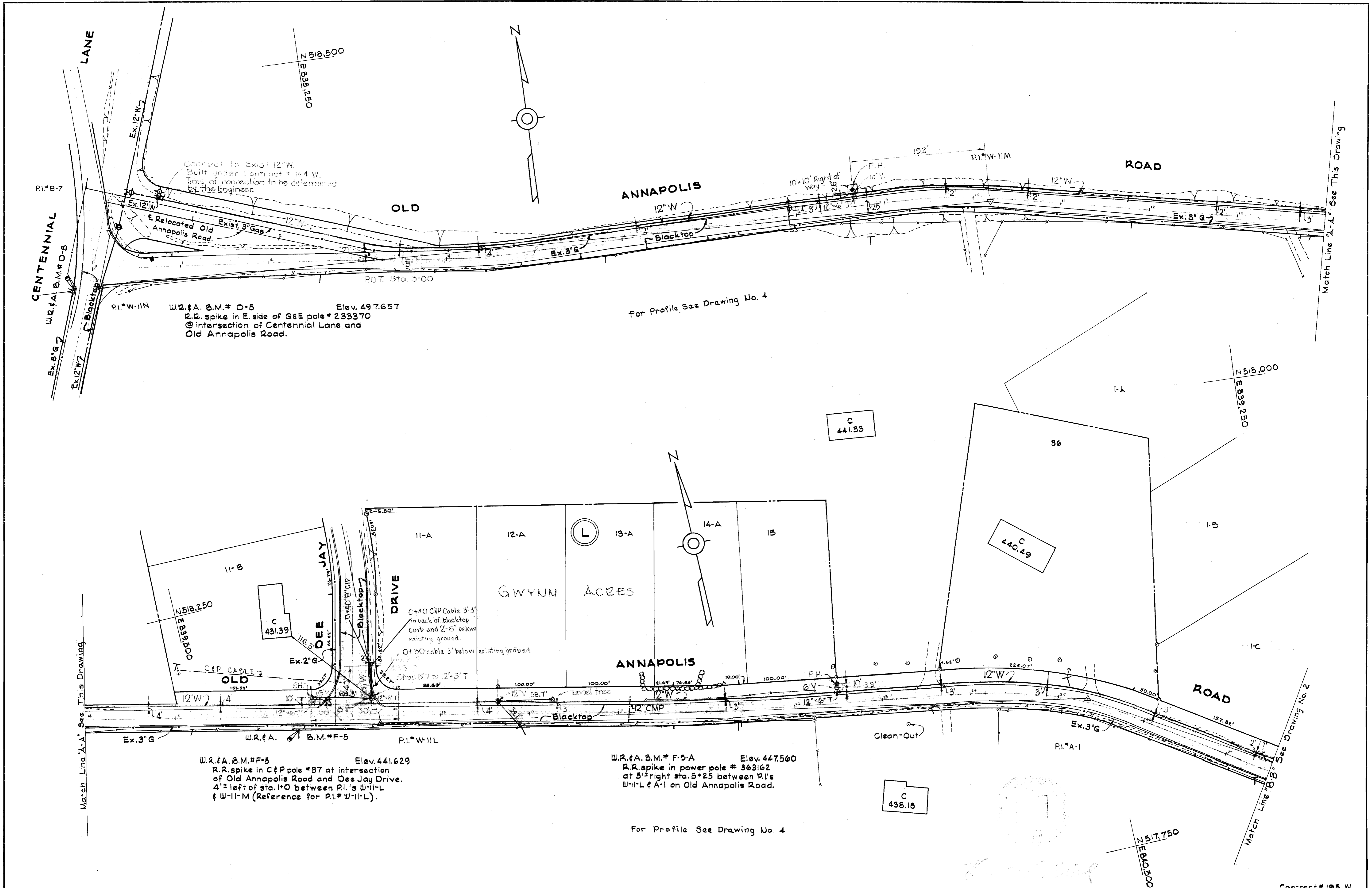
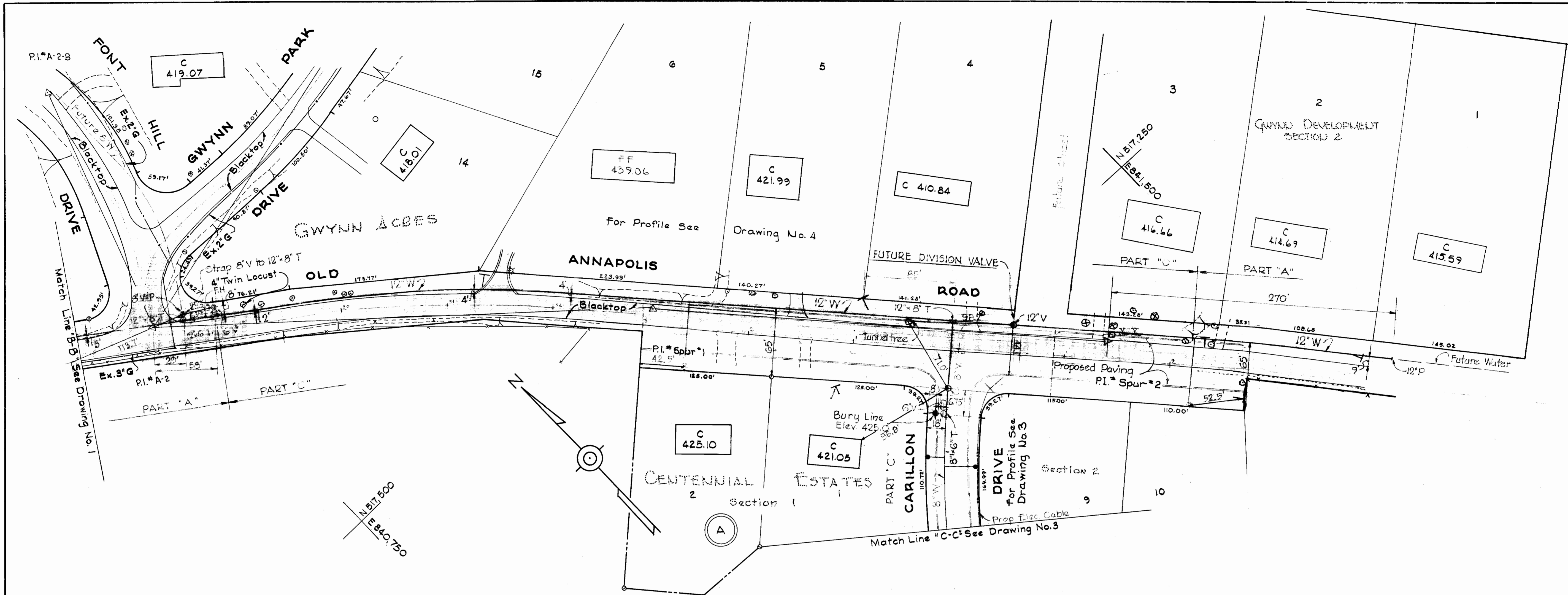


195-W/1

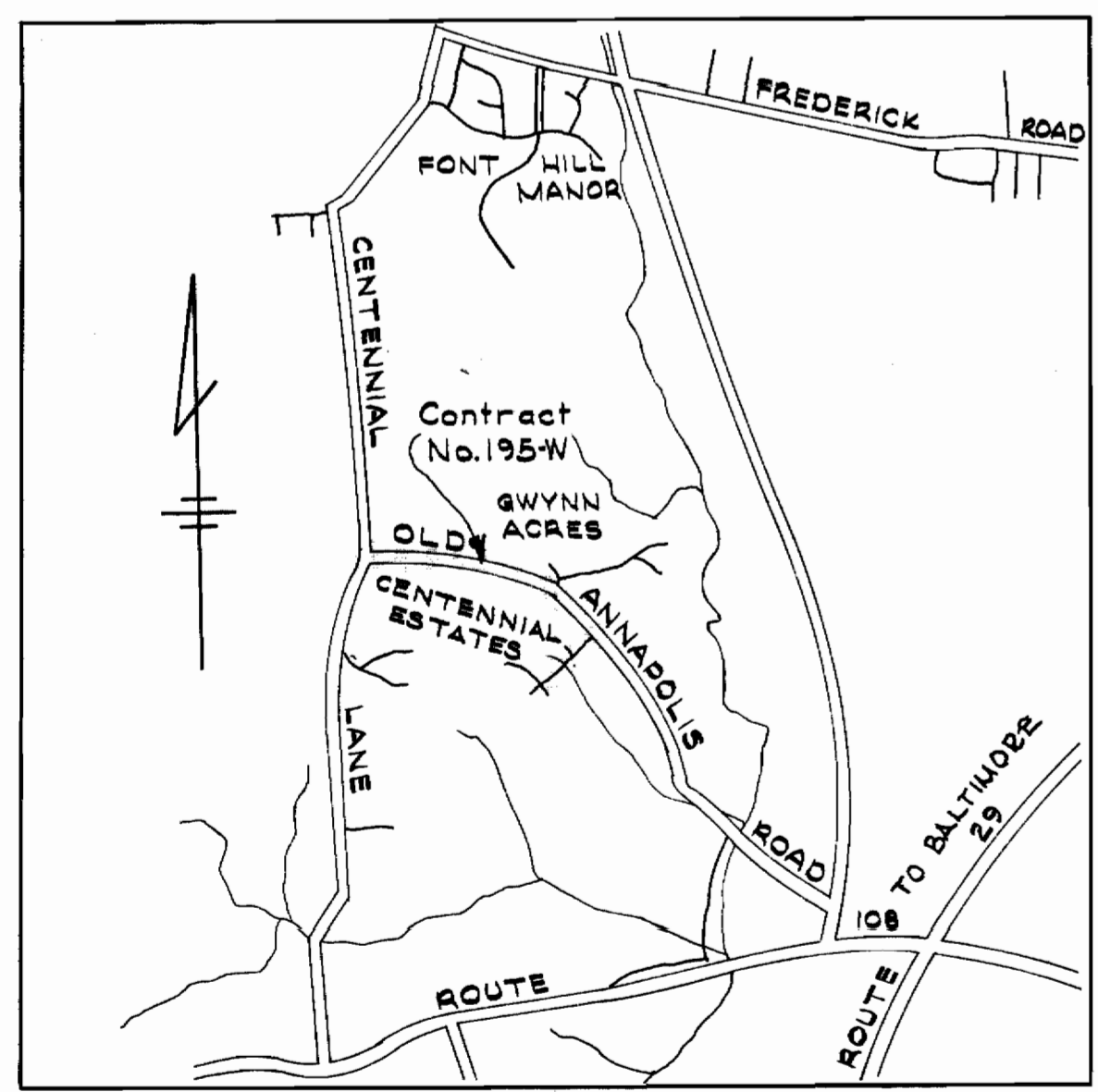


WHITMAN, REQUARDT & ASSOCIATES ENGINEERS 1304 ST. PAUL ST. BALTIMORE, MARYLAND	HOWARD COUNTY METROPOLITAN COMMISSION DATE: 8-19-68 Chief Engineer	CONTRACT NO. 195 W	PLAN OF WATER MAINS	CENTENNIAL ESTATES - SECTIONS 1&2 ELECTION DISTRICT - ELLICOTT CITY No. 2	DRAWING NO. 4 OF 4	SCALE 1"=50' Contract # 195 W
---	--	--------------------	------------------------	--	-----------------------	----------------------------------



GENERAL NOTES

1. Approximate locations of existing mains are shown. The Contractor shall take all necessary precautions to protect existing mains and services and maintain uninterrupted supply. Any damage incurred shall be repaired immediately.
2. All pipe elevations shown are invert elevations.
3. The Contractor shall locate existing utilities a minimum of two weeks in advance of construction operations in vicinity of utilities.
4. For all standard details see standards bound in specifications.
5. All water mains to be C.I.P. or D.I.P. and have a minimum of 3 1/2' cover.
6. Block all fittings with concrete, see standard details bound in specifications.
7. Bury line elevation on fire hydrants shall be set the same as edge of paving, top of curb, or as directed by the Engineer in the field.
8. All fire hydrants will be buttressed with concrete in accordance with Standard Detail W-4.
9. Clear all utilities by a minimum of 6'. Clear all poles by 2'-0" minimum or tunnel as required.
10. Elevations are based upon Maryland State Datum.



VICINITY MAP
Scale: 1" = 1/4 mile

1	5-1-66	Part B changed to Part C. Water house connections added.	Contract #195
2	Date	Revision	

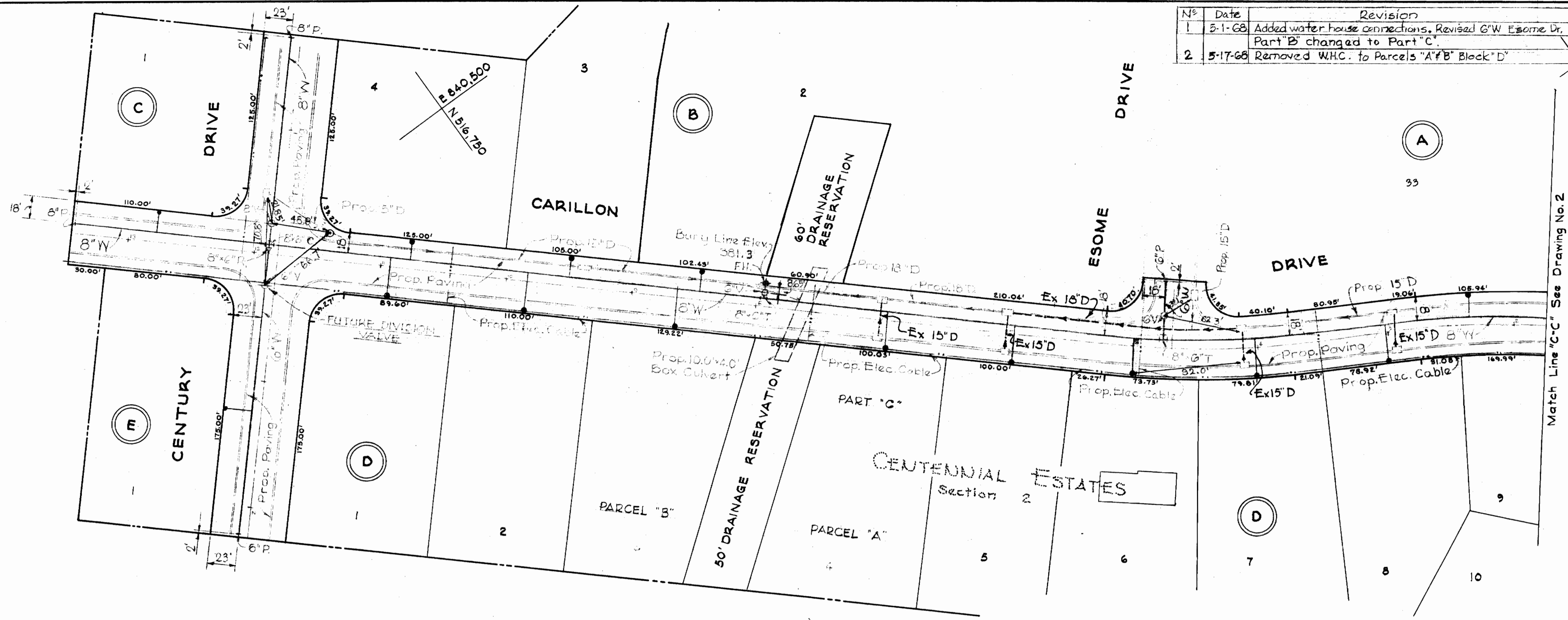
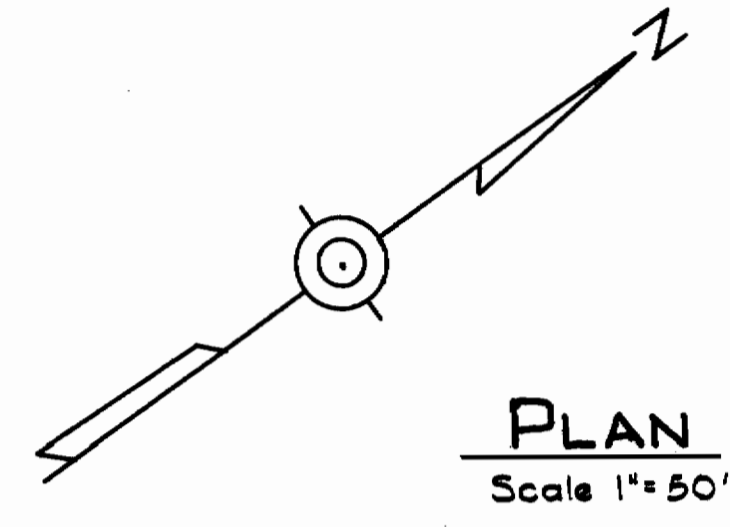
WHITMAN, REQUARDT & ASSOCIATES ENGINEERS 1304 ST. PAUL ST. BALTIMORE, MARYLAND	HOWARD COUNTY METROPOLITAN COMMISSION DATE: 4-19-68 W. O. Palub CHIEF ENGINEER	CONTRACT NO. 195 W	PLAN OF WATER MAINS CENTENNIAL ESTATES - SECTIONS 1&2 ELECTION DISTRICT - ELLICOTT CITY No. 2	DRAWING NO. 2 OF 4	SCALE 1" = 50'
--	--	---------------------------	--	---------------------------	-----------------------

195-W/2

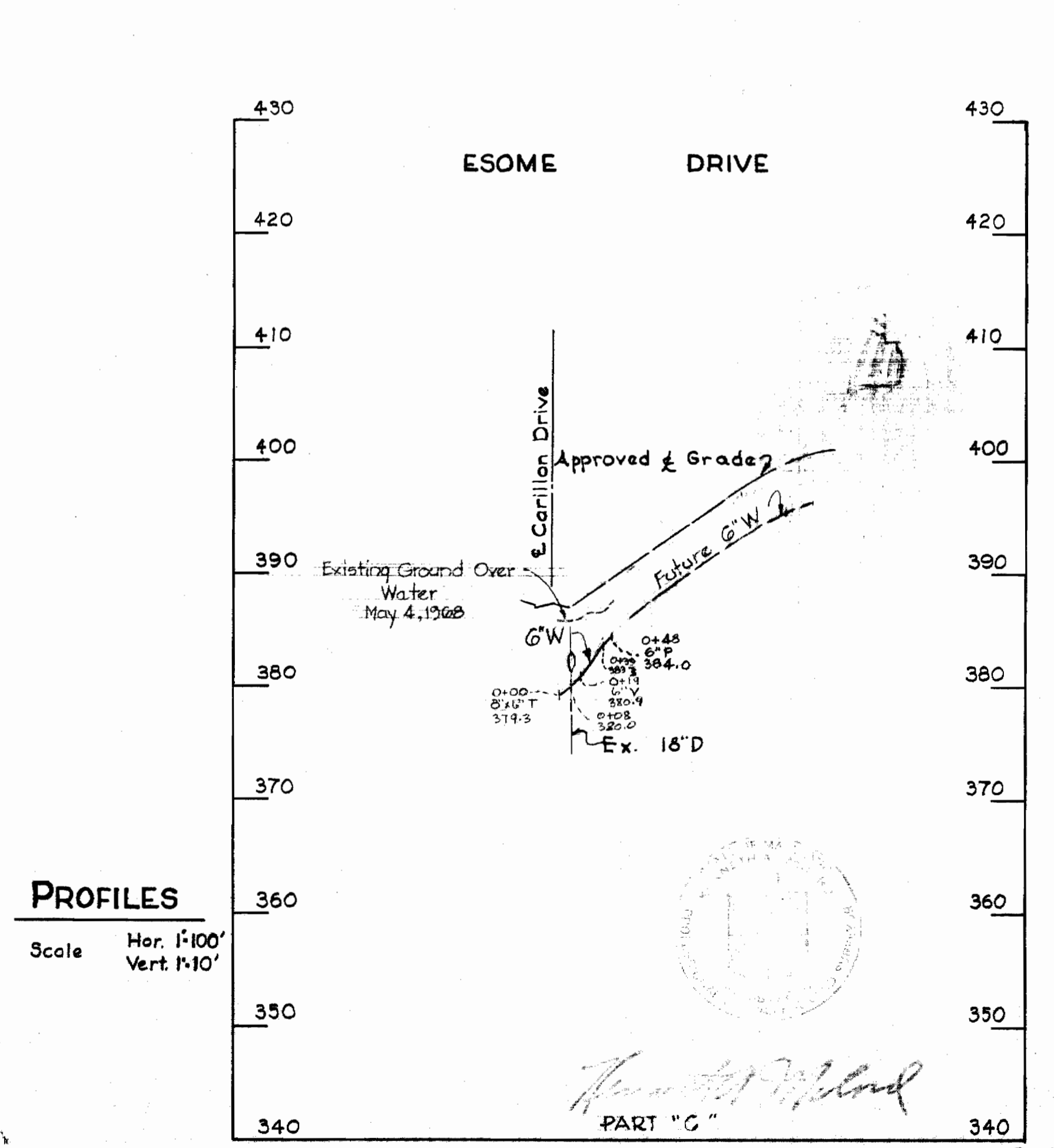
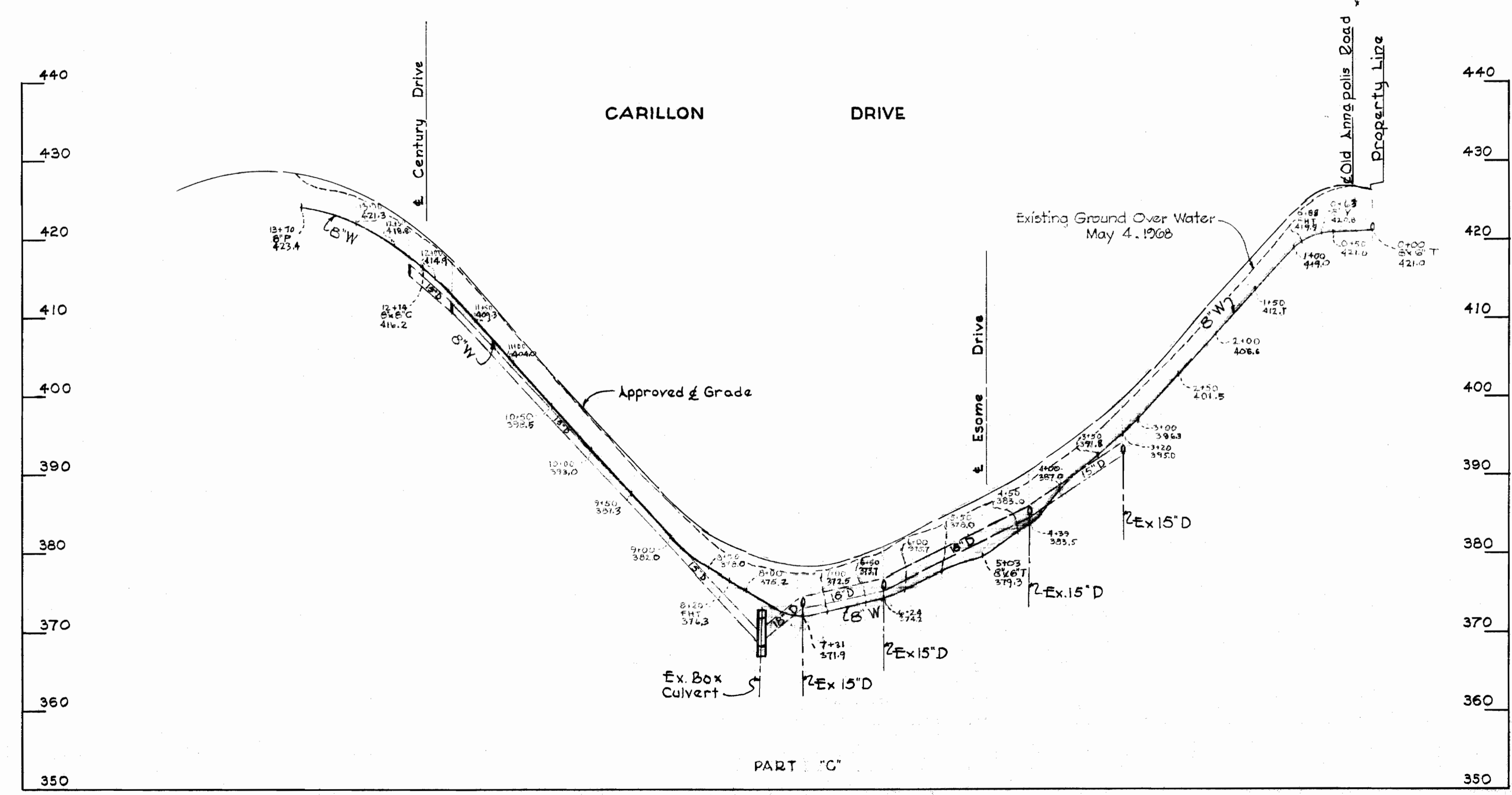
NS

No.	Date	Revision
1	5-1-68	Added water house connections. Revised G.W. Esome Dr. Part 'B' changed to Part 'C'.
2	5-17-68	Removed WHC. to Parcels 'A' & 'B' Block 'D'

E. 841.000
N. 517.250



Match Line "C-C" See Drawing No. 2



PROFILES
Scale Hor. 1" = 100'
Vert. 1" = 10'

Howard County Metropolitan Commission
Seal of Howard County, Maryland
Contract # 195 W

WHITMAN, REQUARDT & ASSOCIATES
ENGINEERS
1304 ST. PAUL ST.
BALTIMORE, MARYLAND

HOWARD COUNTY METROPOLITAN COMMISSION
DATE: 6-16-68
CHIEF ENGINEER

CONTRACT NO. 195 W

PLAN & PROFILES OF
WATER MAINS

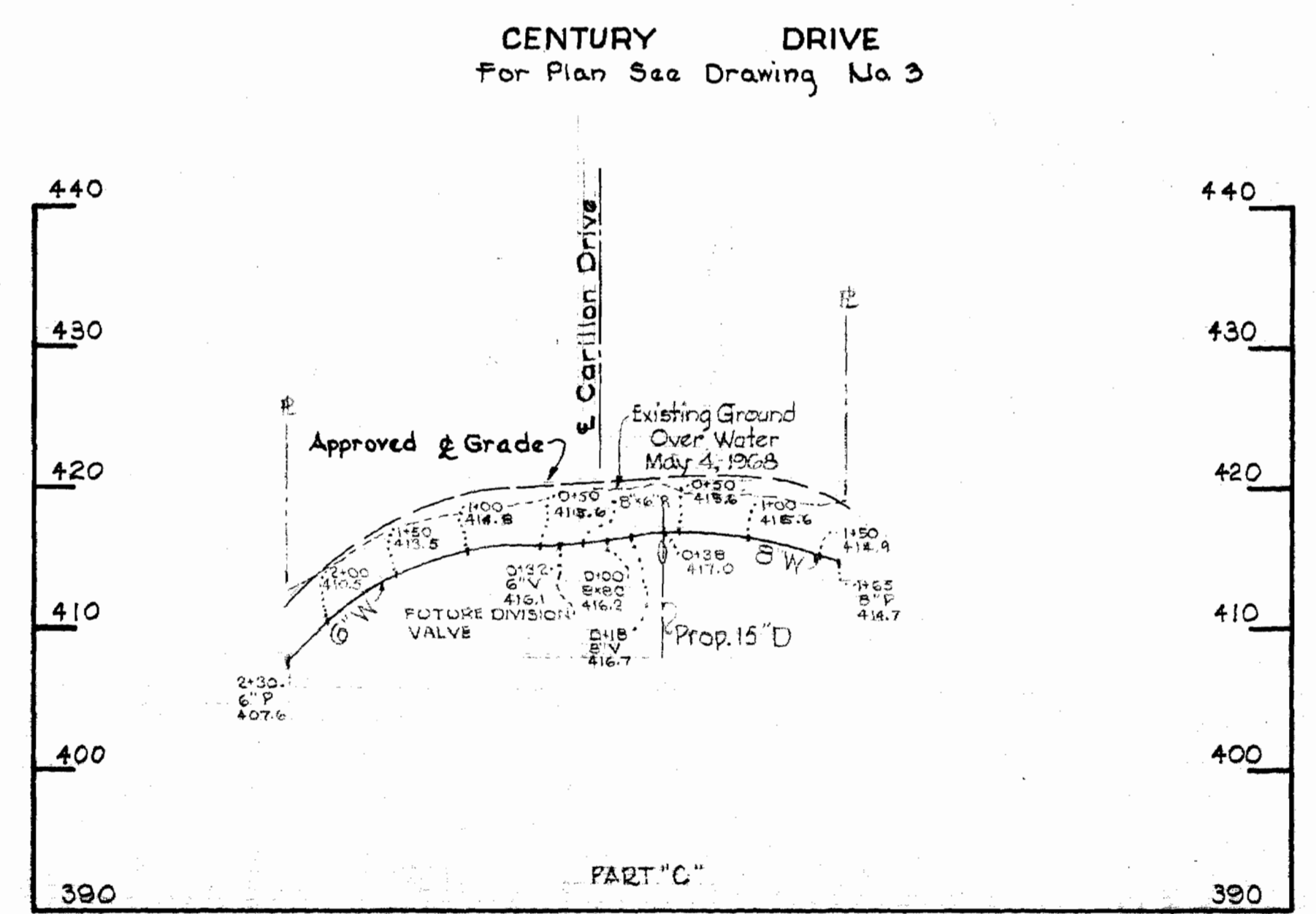
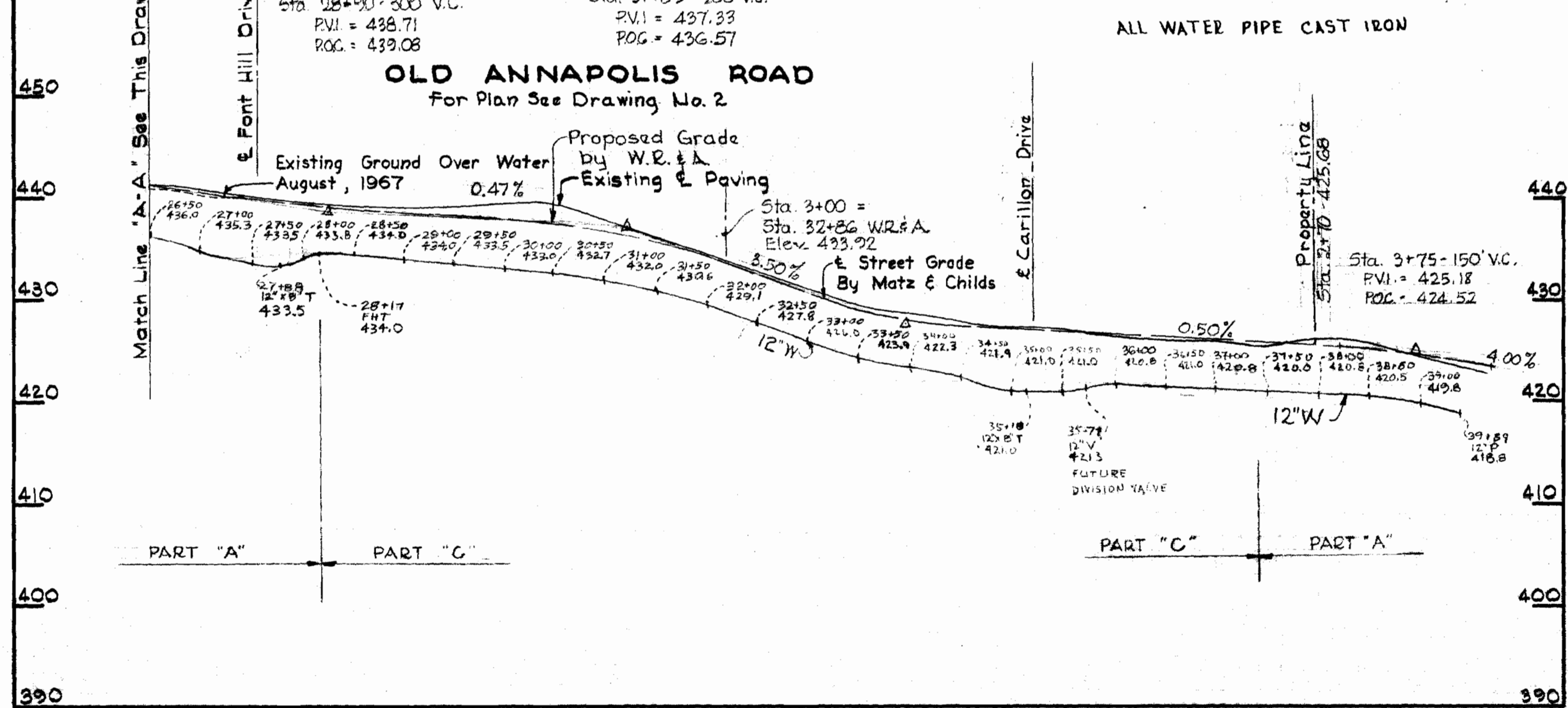
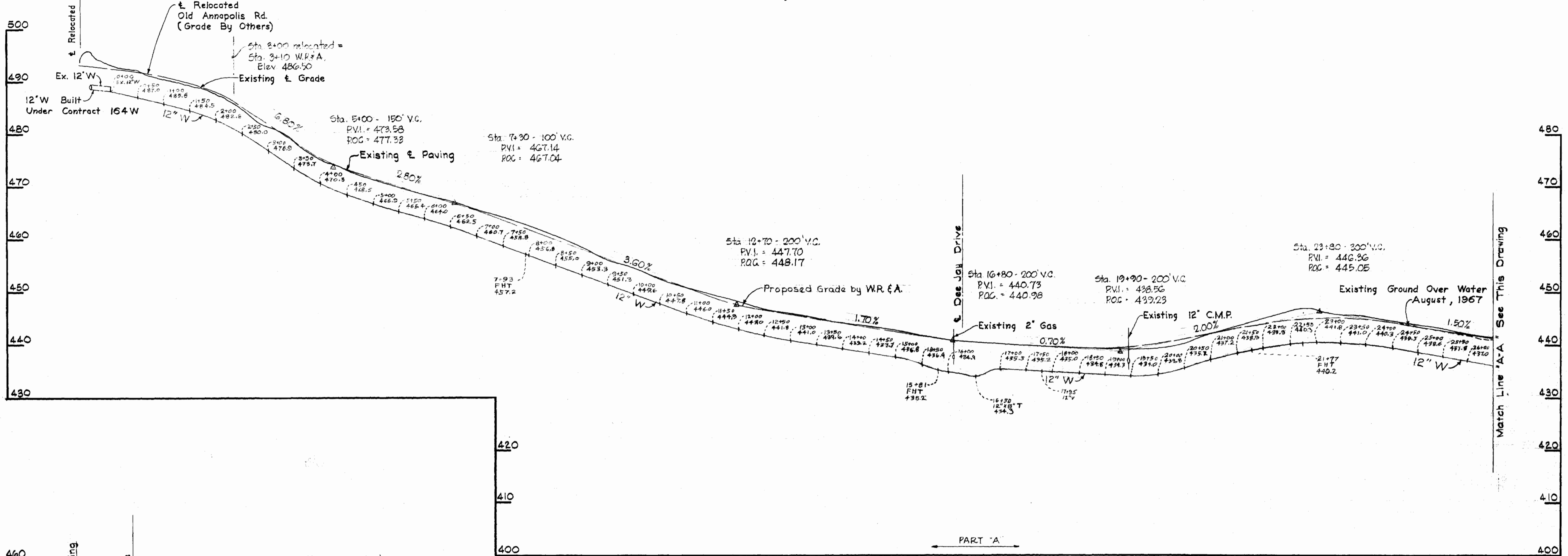
CENTENNIAL ESTATES - SECTIONS 1 & 2
ELECTION DISTRICT - ELLICOTT CITY No. 2

DRAWING NO. 3 OF 4
SCALE AS SHOWN

195-W/3

U.S. Data	Revision
1	5-1-68 Part 'B' changed to Part 'C'

OLD ANNAPOLIS ROAD
For Plan See Drawing No. 1



Handwritten signature

Contract # 195 N

WHITMAN, REQUARDT & ASSOCIATES ENGINEERS 1304 ST. PAUL ST. BALTIMORE, MARYLAND	HOWARD COUNTY METROPOLITAN COMMISSION 4-19-68 DATE	W. O. Fildes CHIEF ENGINEER	CONTRACT NO. 195 W	PROFILES OF WATER MAINS	CENTENNIAL ESTATES - SECTIONS 1&2 ELECTION DISTRICT - ELLICOTT CITY No. 2	DRAWING NO. 4 OF 4	SCALE H. 1"=100' V. 1"=10'
---	--	--------------------------------	--------------------	----------------------------	--	--------------------------	----------------------------------