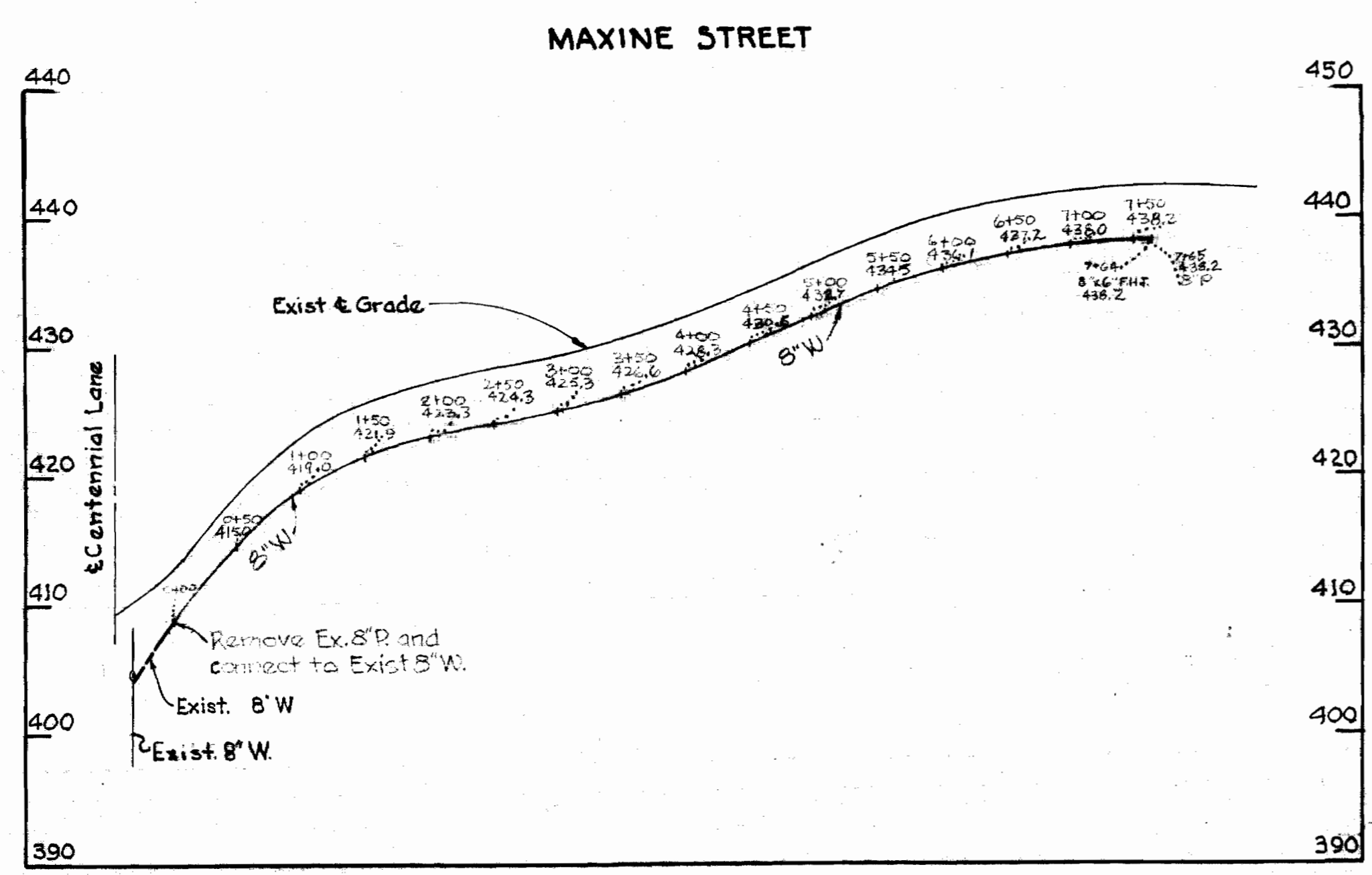


W.R. & A. B.M. "D-10
R.R. Spike E. side G.E. pole # 16085 f sta. 6+40,
Rt. 30' Elev. 416.35'

W.R. & A. B.M. "A-1
R.R. spike in Power Pole # G/E 367952 Elev. 438.907

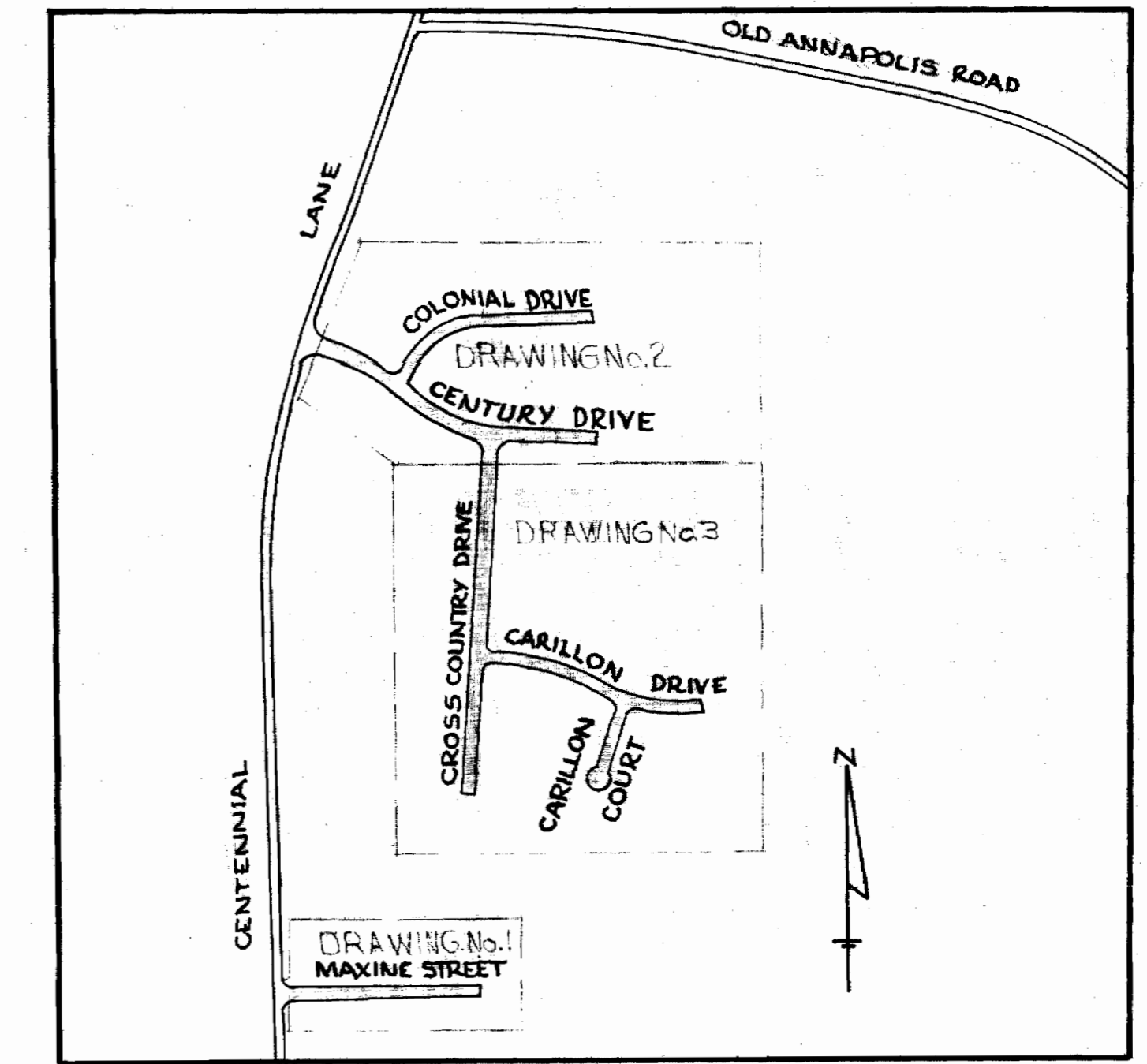
PLAN
Scale: 1" = 50'



PROFILE
Scale: Hor. 1" = 100'
Ver. 1" = 10'

GENERAL NOTES

1. Approximate location of existing mains are shown. The Contractor shall take all necessary precautions to protect existing mains and services and maintain uninterrupted supply. Any damage incurred shall be repaired immediately.
2. All pipe elevations shown are invert elevations.
3. The Contractor shall locate existing utilities a minimum of two weeks in advance of construction operations in vicinity of utilities.
4. For all standard details see standards bound in Specifications.
5. All water mains to be C.I.P. or D.I.P. and have a minimum of 3 1/2' cover.
6. Block all fittings with concrete, see standard details bound in Specifications.
7. Bury line elevation on fire hydrants shall be set the same as edge of paving, top of curb or as directed by the Engineer in the field.
8. All Fire Hydrants shall be buttressed with concrete in accordance with standard detail W-14.
9. Costs of strapping Valves to tees to be included in the unit price bid for furnishing and laying of water mains.
10. Clear all utilities by a minimum of 6'; clear all poles by 2'-0" minimum or tunnel as required.



VICINITY MAP
Scale: 1" = 600'



Robert M. Lord

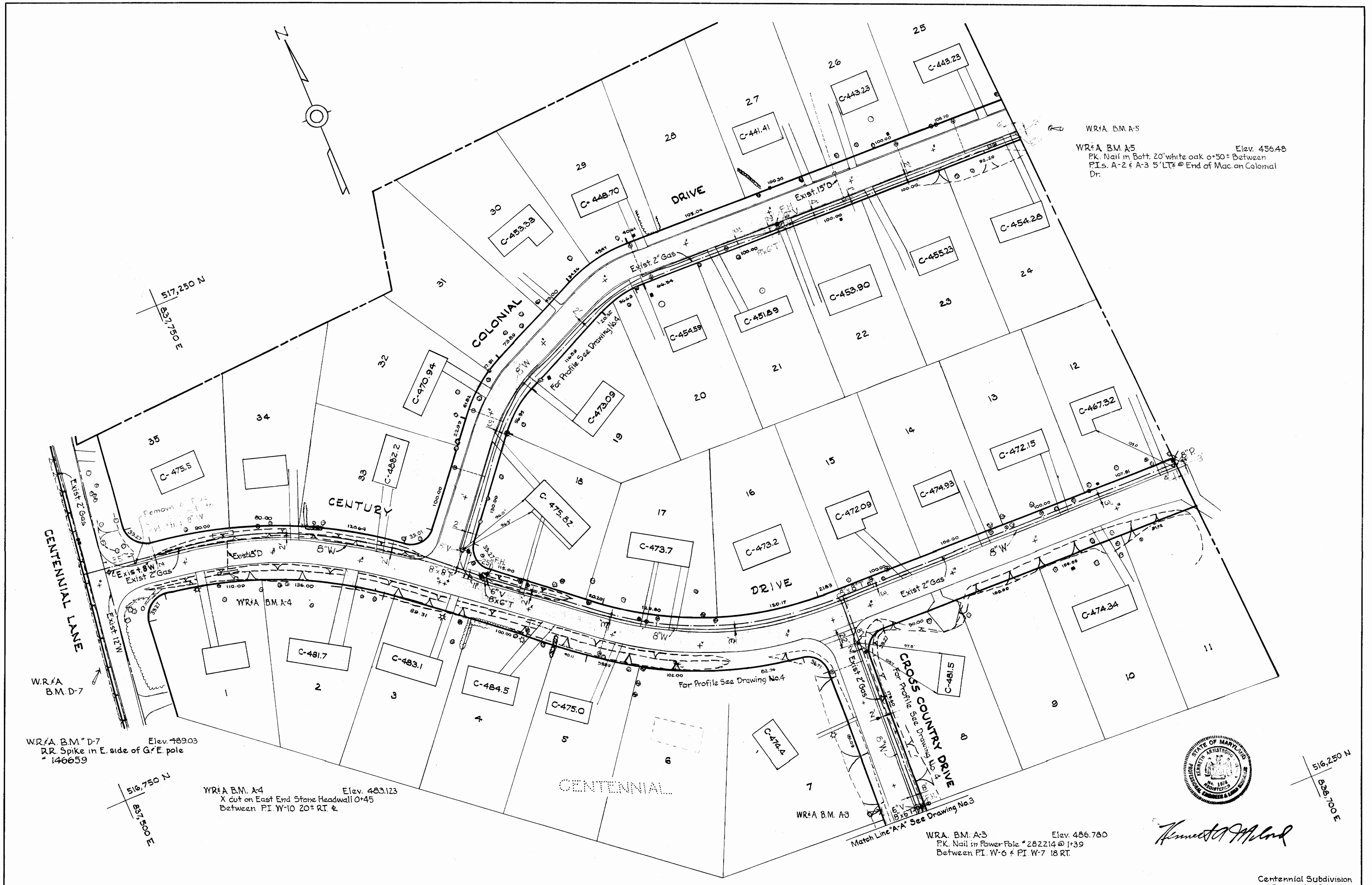
WHITMAN, REQUARDT & ASSOCIATES ENGINEERS 1304 ST. PAUL ST. BALTIMORE, MARYLAND	HOWARD COUNTY METROPOLITAN COMMISSION DATE: 10-16-67 <i>W. O. Salbeck</i> CHIEF ENGINEER	CONTRACT NO. 194-W	PLAN AND PROFILE OF WATER MAINS	EAST SIDE SUBDIVISION ELECTION DISTRICT - ELLICOTT CITY NO. 2	DRAWING NO. 1 OF 4 SCALE AS SHOWN
---	---	--------------------	------------------------------------	--	--------------------------------------

W. O. 5839-2

AS BUILT JUNE 6, 1968 EB. 3886

194-W/1
WS

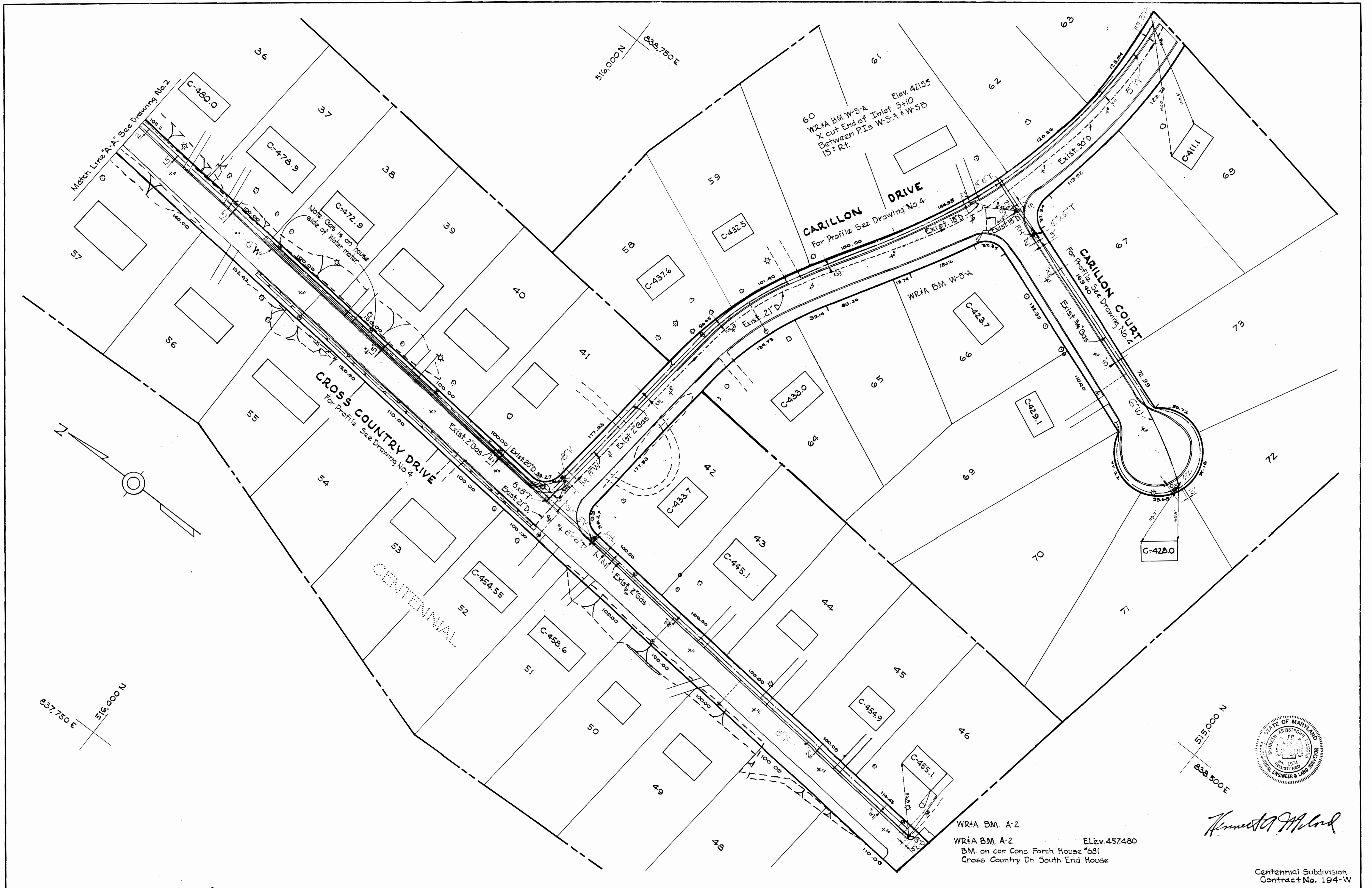
194-W/2



Kenneth Armstrong

WHITMAN, REQUARDT & ASSOCIATES ENGINEERS 1304 ST. PAUL ST. BALTIMORE, MARYLAND	HOWARD COUNTY METROPOLITAN COMMISSION 10-16-67 <i>W. O. Salub</i> DATE CHIEF ENGINEER	CONTRACT NO. 194-W	PLAN OF WATER MAINS	CENTENNIAL SUBDIVISION ELECTION DISTRICT- ELLICOTT CITY NO. 2	DRAWING NO. 2 OF 4 SCALE 1"=50' <small>AS BUILT</small>
---	---	--------------------	------------------------	--	---

WS 194-W/3



WHITMAN, REQUARDT & ASSOCIATES
 ENGINEERS
 1304 ST. PAUL ST.
 BALTIMORE, MARYLAND

HOWARD COUNTY METROPOLITAN COMMISSION
 DATE 10-16-67 *W.D. Gilbert*
 CHIEF ENGINEER

CONTRACT NO. 194-W

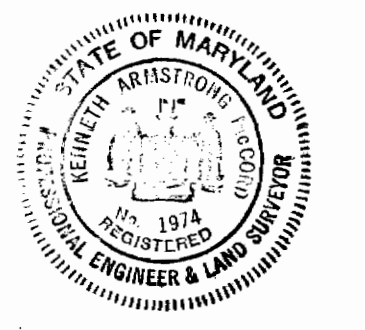
PLAN OF
 WATER MAINS

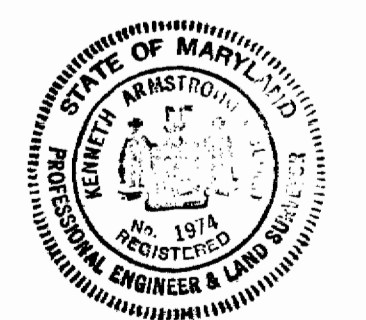
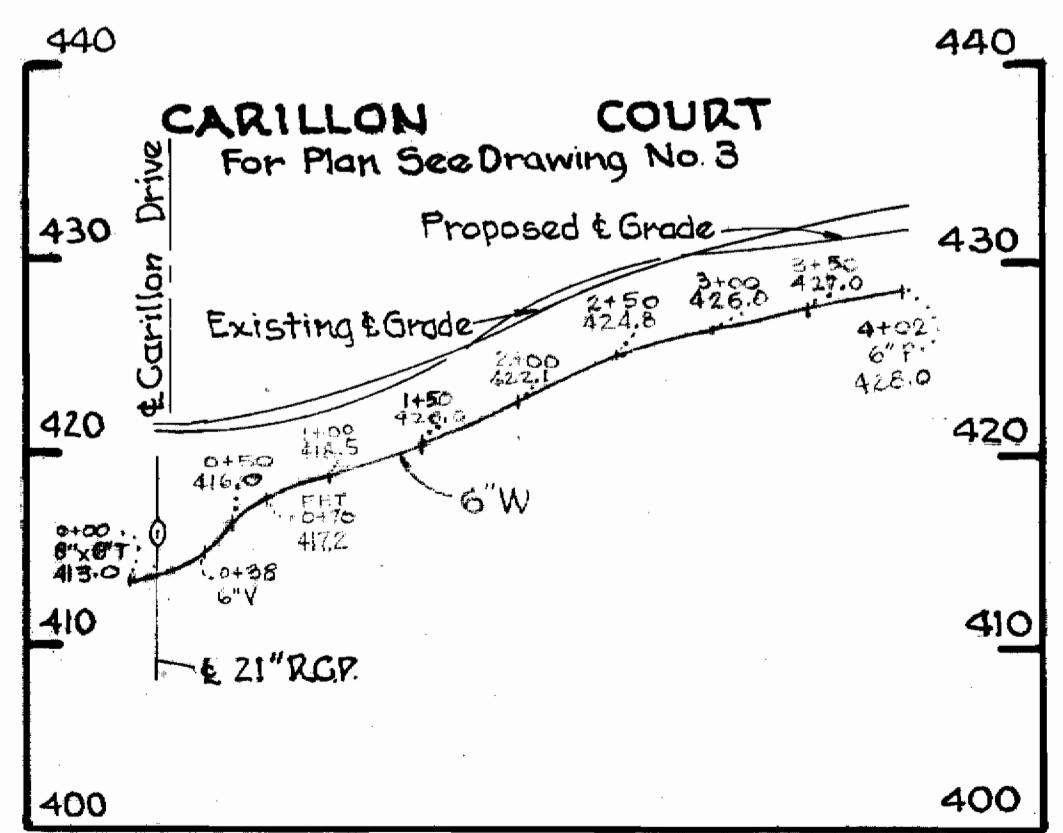
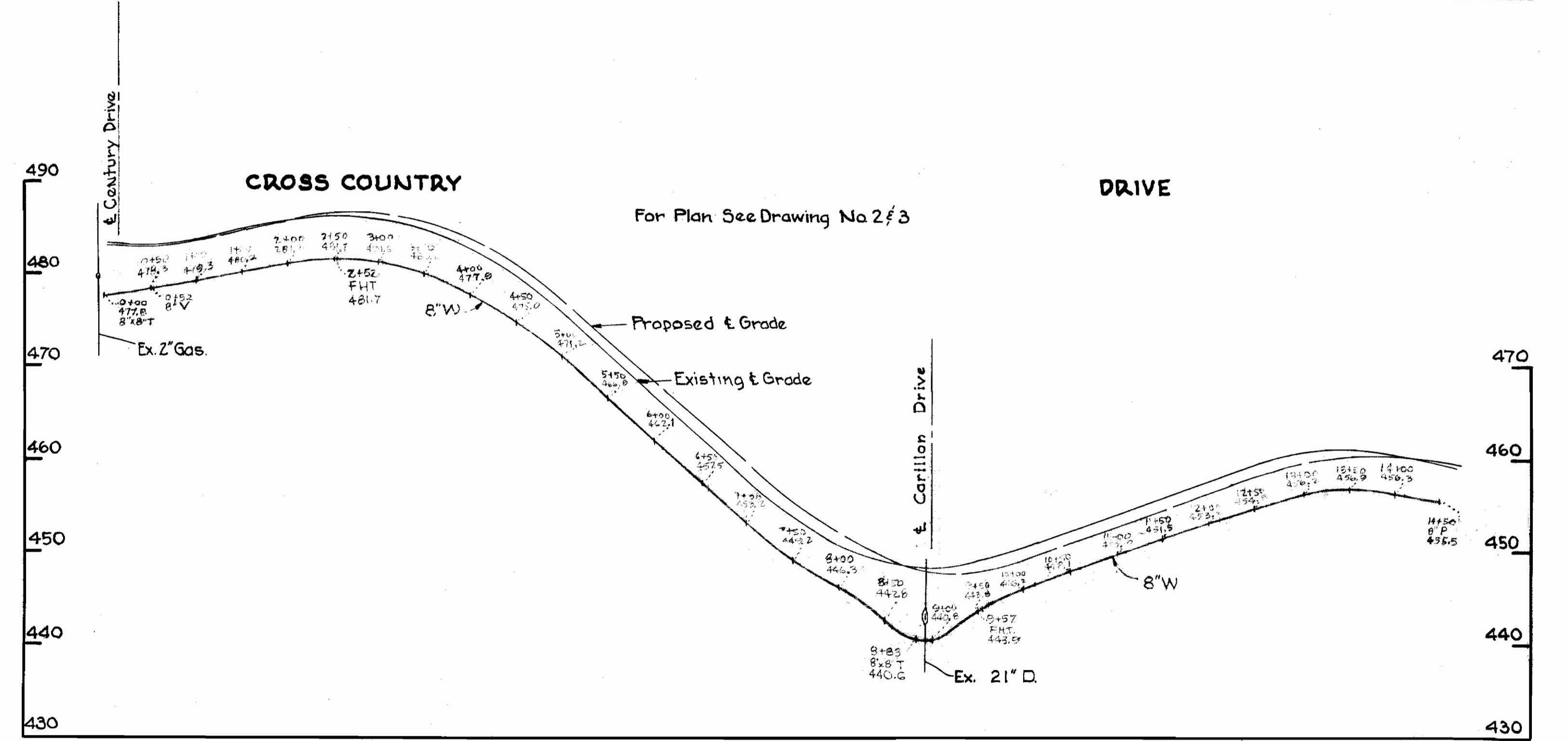
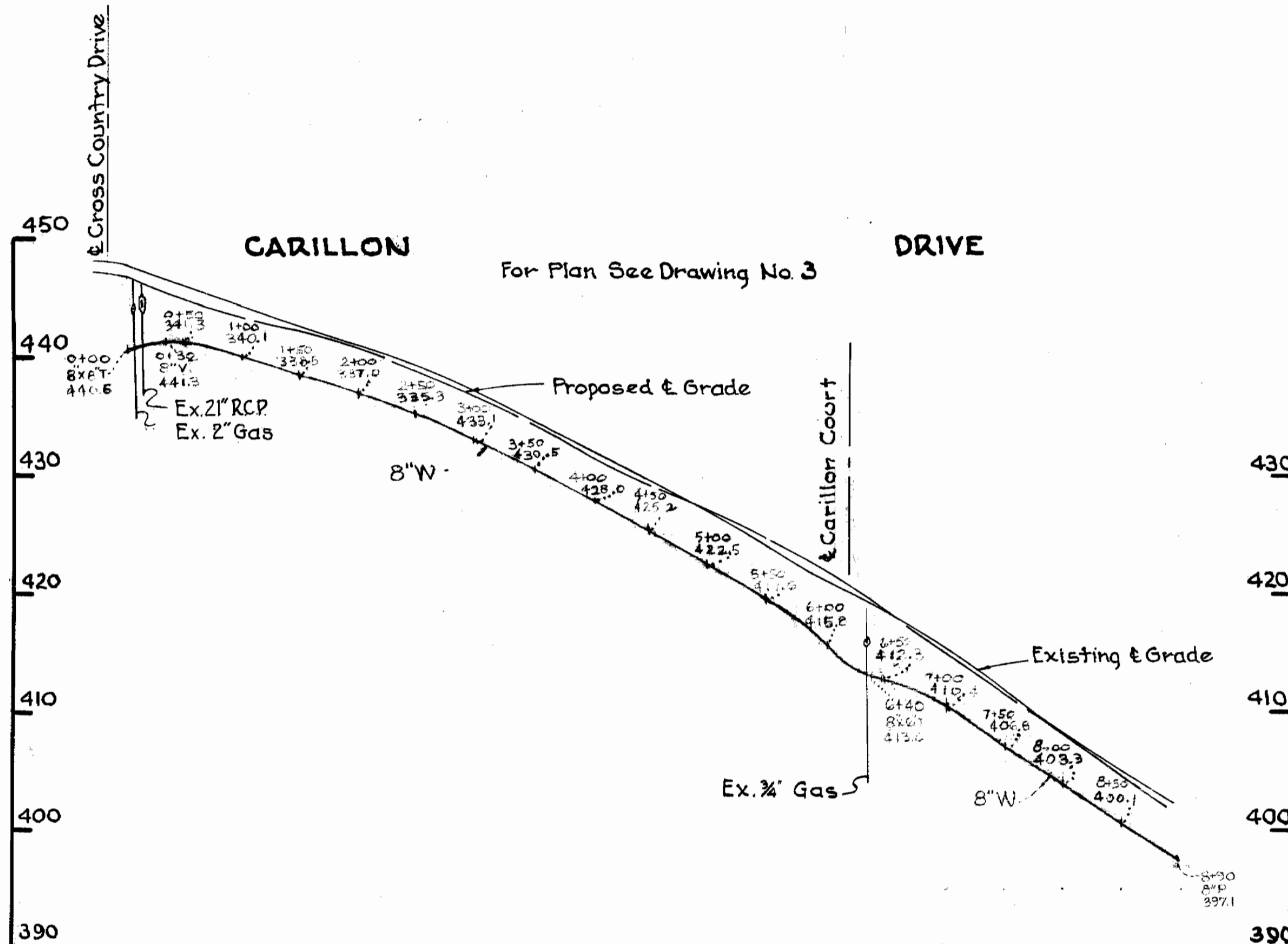
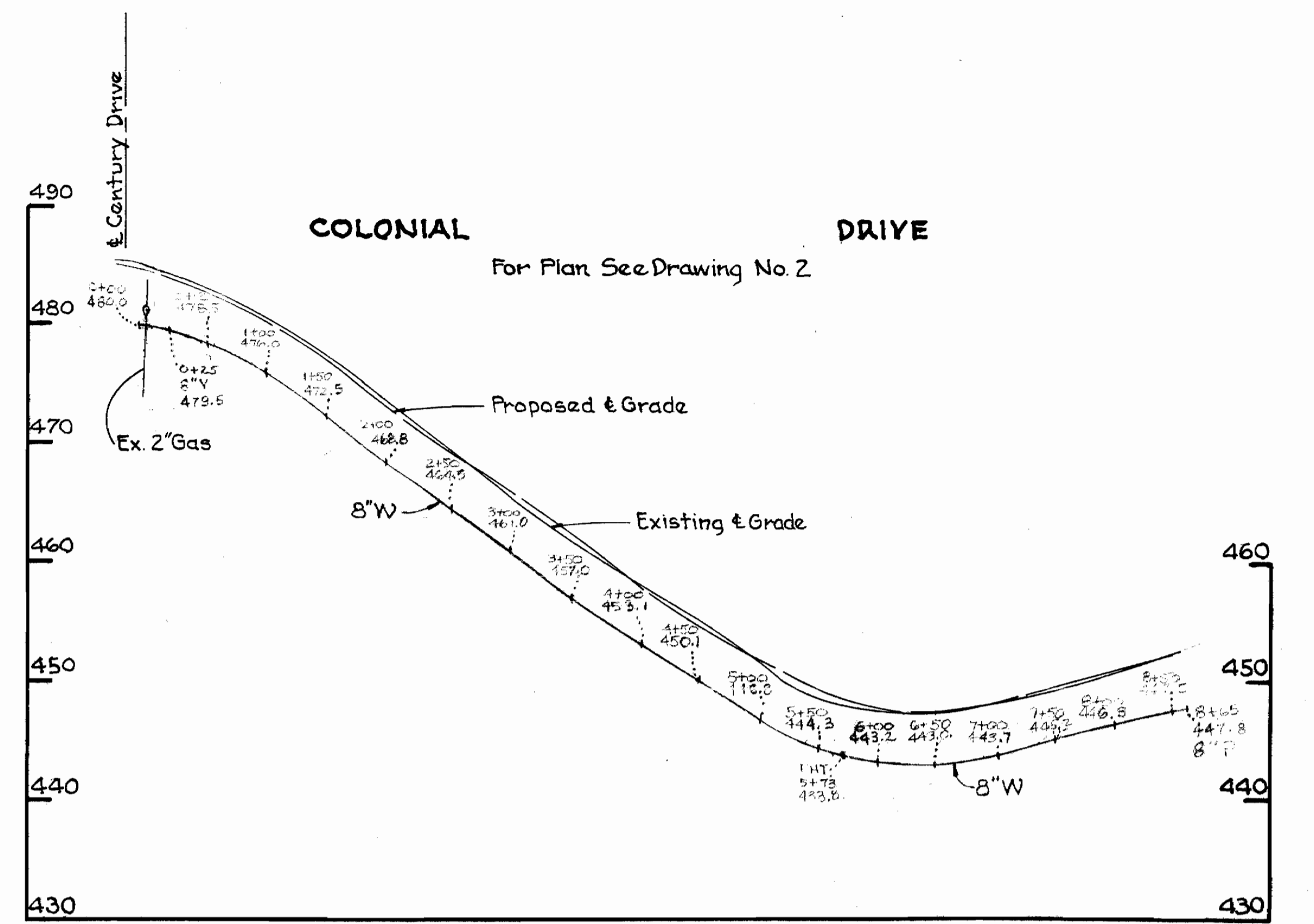
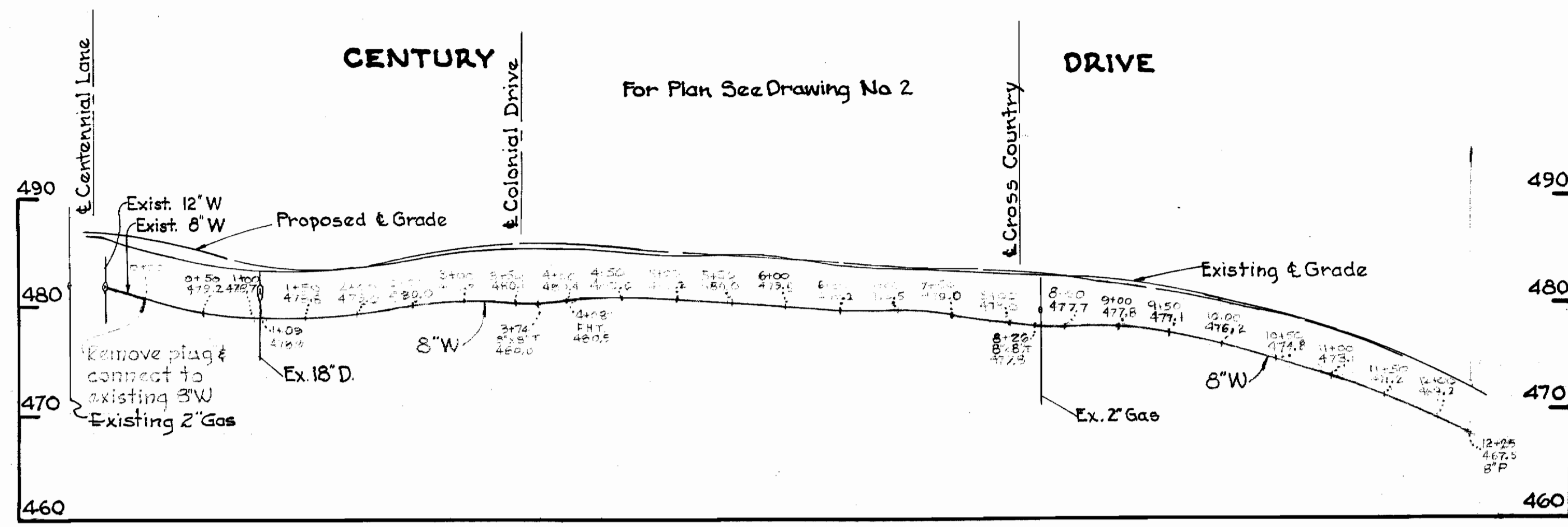
CENTENNIAL SUBDIVISION
 ELECTION DISTRICT-ELLCOTT CITY NO. 2

DRAWING NO. 3	SCALE 1"=50'
OF 4	

WR+A BM. A-2
 WR+A BM. A-2 EL2v.457480
 BM. on cor. Conc. Porch House #681
 Cross Country Dr. South End House

Kenneth A. M. Lind





Kenneth J. McLeod

Centennial Sub-Division
Contract 194-W

WHITMAN, REQUARDT & ASSOCIATES ENGINEERS 1304 ST. PAUL ST. BALTIMORE, MARYLAND	HOWARD COUNTY METROPOLITAN COMMISSION 10-16-67 <i>W. J. Albert</i> DATE CHIEF ENGINEER	CONTRACT NO. 194-W	PROFILE OF WATER MAINS	CENTENNIAL SUBDIVISION ELECTION DISTRICT-ELLCOTT CITY NO. 2	DRAWING NO. 4 OF 4 SCALE H-1"=100' V-1"=10' AS BUILT
---	--	--------------------	---------------------------	--	---

194-W/4