

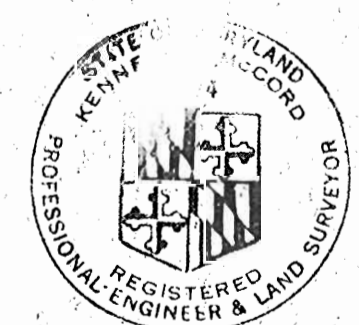
NOTE: SEE CONTRACT  
267 S FOR LINES

# CONTRACT 188-W

## WATER ~~AND SEWER~~ MAIN EXTENSIONS

### HOWARD COUNTY METROPOLITAN COMMISSION

#### ELLICOTT CITY, MARYLAND



*Herbert A. M. ...*

QUANTITIES	
ITEM	QUANTITY
6" W	4231'
8" W	5225'
F.H.	11

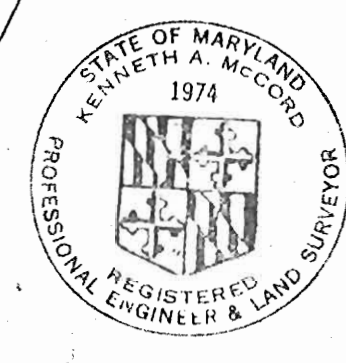
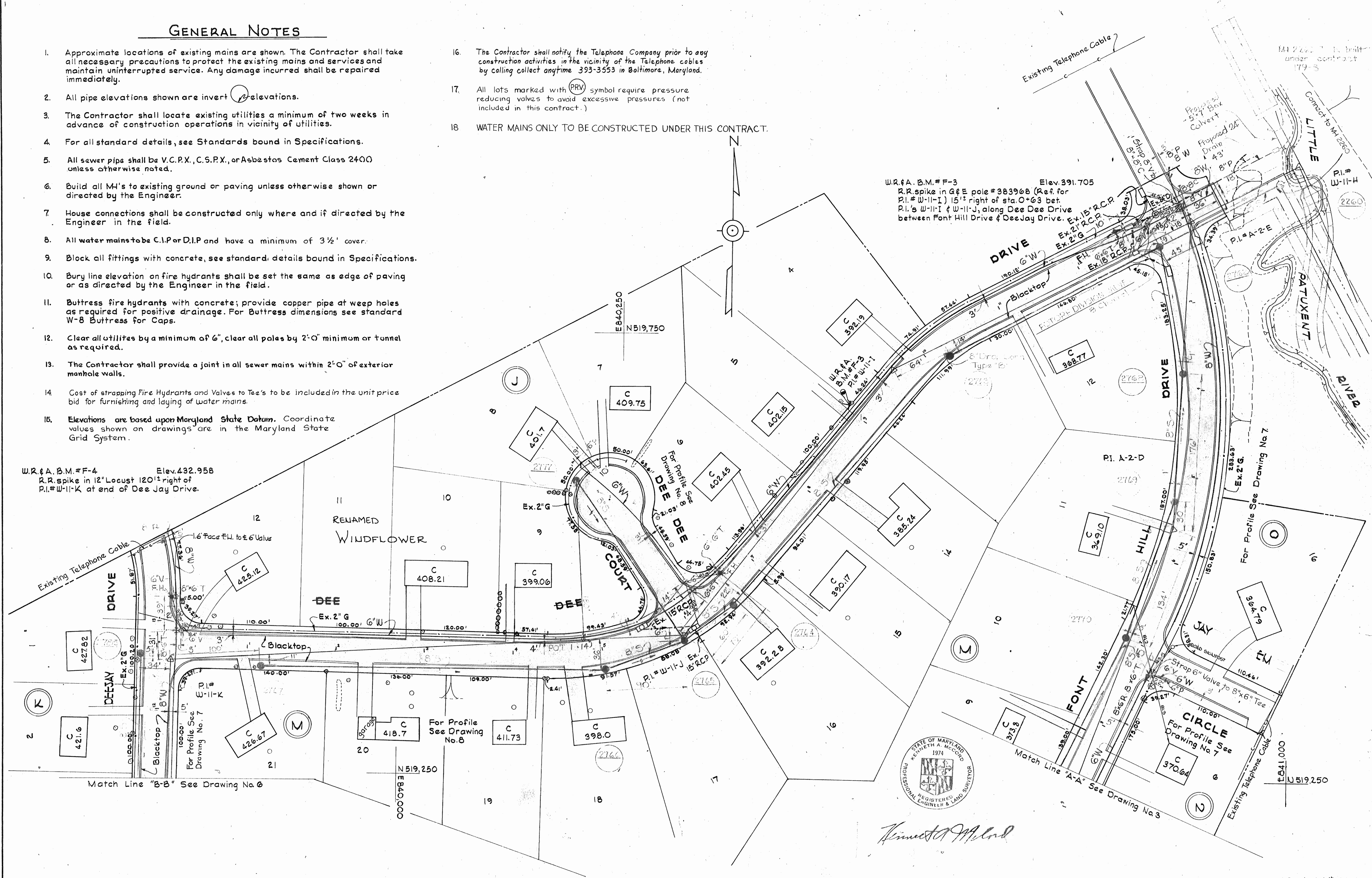
WHITMAN, REQUARDT & ASSOCIATES ENGINEERS 1304 ST. PAUL ST. BALTIMORE, MARYLAND	HOWARD COUNTY METROPOLITAN COMMISSION DATE: 7-16-68 <i>W. O. ...</i> CHAIRMAN	CONTRACT NO. 188-W	LOCATION MAP OF WATER & SEWER MAIN EXTENSIONS	ELLICOTT CITY - GWYNN ACRES ELECTION DISTRICT - ELLICOTT CITY No. 2	DRAWING NO. 1 OF 9 SCALE AS SHOWN
---	--	--------------------	--	--	---

**GENERAL NOTES**

1. Approximate locations of existing mains are shown. The Contractor shall take all necessary precautions to protect the existing mains and services and maintain uninterrupted service. Any damage incurred shall be repaired immediately.
2. All pipe elevations shown are invert (I) elevations.
3. The Contractor shall locate existing utilities a minimum of two weeks in advance of construction operations in vicinity of utilities.
4. For all standard details, see Standards bound in Specifications.
5. All sewer pipe shall be V.C.P.X., C.S.P.X., or Asbestos Cement Class 2400 unless otherwise noted.
6. Build all M.H.'s to existing ground or paving unless otherwise shown or directed by the Engineer.
7. House connections shall be constructed only where and if directed by the Engineer in the field.
8. All water mains to be C.I.P. or D.I.P. and have a minimum of 3 1/2' cover.
9. Block all fittings with concrete, see standard details bound in Specifications.
10. Bury line elevation on fire hydrants shall be set the same as edge of paving or as directed by the Engineer in the field.
11. Buttress fire hydrants with concrete; provide copper pipe at weep holes as required for positive drainage. For Buttress dimensions see standard W-8 Buttress for Caps.
12. Clear all utilities by a minimum of 6", clear all poles by 2'-0" minimum or tunnel as required.
13. The Contractor shall provide a joint in all sewer mains within 2'-0" of exterior manhole walls.
14. Cost of strapping Fire Hydrants and Valves to Tee's to be included in the unit price bid for furnishing and laying of water mains.
15. Elevations are based upon Maryland State Datum. Coordinate values shown on drawings are in the Maryland State Grid System.
16. The Contractor shall notify the Telephone Company prior to any construction activities in the vicinity of the Telephone cables by calling collect anytime 393-3553 in Baltimore, Maryland.
17. All lots marked with (PRV) symbol require pressure reducing valves to avoid excessive pressures (not included in this contract.)
18. WATER MAINS ONLY TO BE CONSTRUCTED UNDER THIS CONTRACT.

W.R.# A. B.M.# F-4 Elev. 432.958  
 R.R. spike in 12' Locust 120' right of  
 P.I.# W-11-K at end of Dee Jay Drive.

W.R.# A. B.M.# F-3 Elev. 391.705  
 R.R. spike in G&E pole # 383968 (Ref. for  
 P.I.# W-11-I) 15' right of sta. 0+63 bet.  
 P.I.'s W-11-I & W-11-J, along Dee Jay Drive  
 between Font Hill Drive & Dee Jay Drive.



*Kenneth A. McCoy*

WHITMAN, REQUARDT & ASSOCIATES ENGINEERS 1304 ST. PAUL ST. BALTIMORE, MARYLAND	HOWARD COUNTY METROPOLITAN COMMISSION DATE: 7-16-68 W. J. [Signature] CHIEF ENGINEER	CONTRACT NO. 188-W	PLAN OF WATER AND SEWER MAINS	ELLICOTT CITY - GWYNN ACRES ELECTION DISTRICT - ELLICOTT CITY No. 2	DRAWING NO. 2 OF 9 SCALE 1"=50' 519-480, 619-484
---	---	--------------------	----------------------------------	--	--

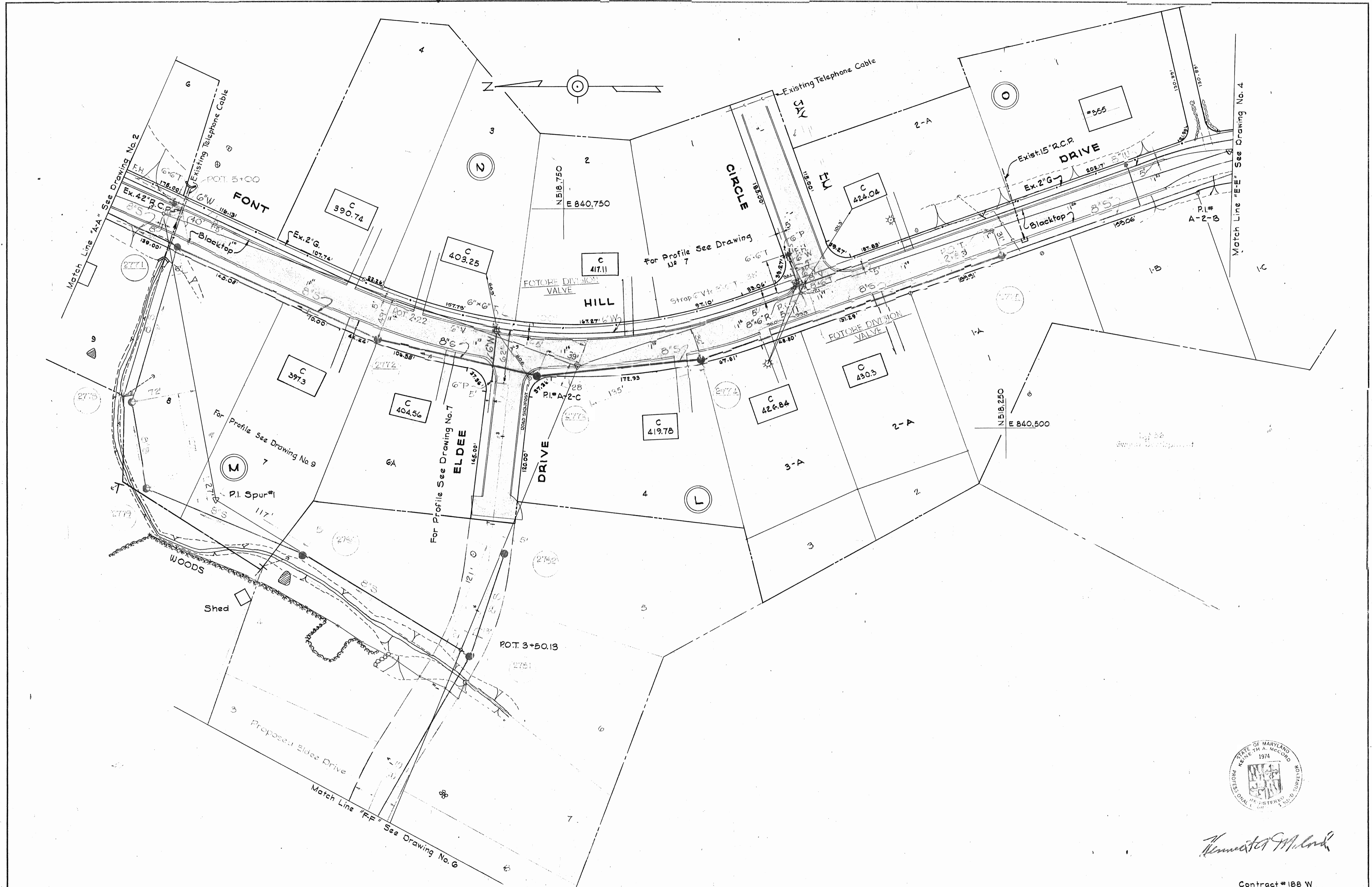
W.O. 5839-2

NOV. 1, 1968

Contract # 188W

AS BUILT

WS 188-W/2



*Thomas M. Clark*

Contract # 188 W

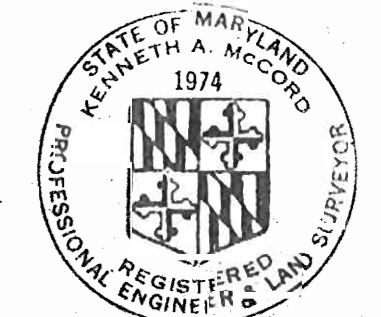
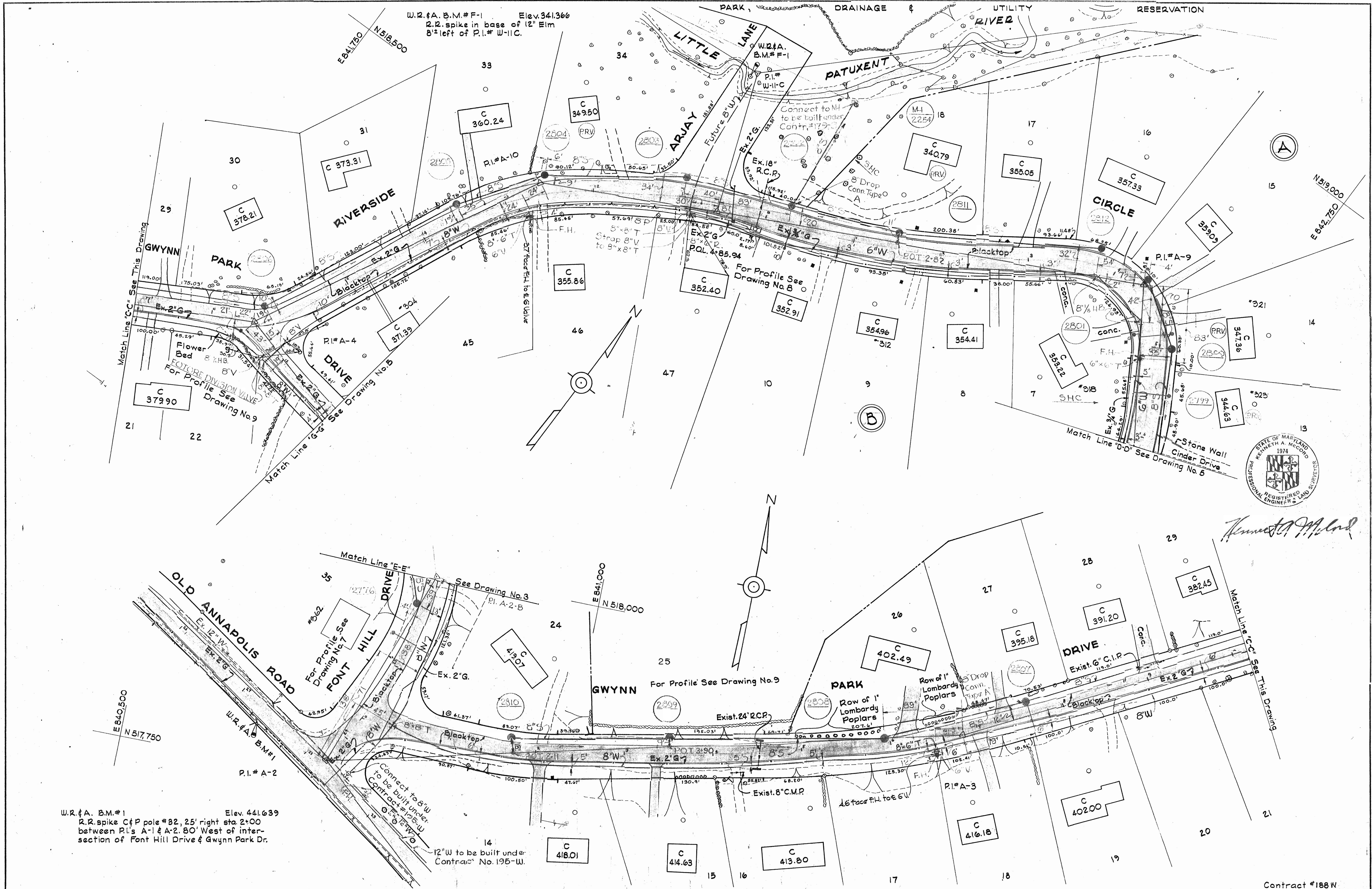
WHITMAN, REQUARDT & ASSOCIATES ENGINEERS 1304 ST. PAUL ST. BALTIMORE, MARYLAND	HOWARD COUNTY METROPOLITAN COMMISSION DATE 7-16-68 <i>W.O. Falter</i> CHIEF ENGINEER	CONTRACT NO. 188-W	PLAN OF WATER AND SEWER MAINS	ELLICOTT CITY GWYNN ACRES ELECTION DISTRICT - ELLICOTT CITY No. 2	DRAWING NO. 3 GF. 9 SCALE 1"=50' <small>519-581, 518-481, 517-481</small>
---	---	--------------------	----------------------------------	--	--

W.O. 5839-2

10/11/68

AS BUILT

WS 188-W/3



*Kenneth A. McCord*

WS 188-W/4

WHITMAN, REQUARDT & ASSOCIATES ENGINEERS 1304 ST. PAUL ST. BALTIMORE, MARYLAND	HOWARD COUNTY METROPOLITAN COMMISSION DATE 1-16-68 <i>W. O. Silver</i> CHIEF ENGINEER	CONTRACT NO. 188-W	PLAN OF WATER AND SEWER MAINS	ELLICOTT CITY - GWYNN ACRES ELECTION DISTRICT - ELLICOTT CITY No. 2	DRAWING NO. 4 OF 9 SCALE 1"=50' AS BUILT
---	--	--------------------	----------------------------------	--	--

W.O. 5839-2

WS 188-W/5



W.R.#A. B.M.#2 Elev. 371.914  
 R.R. spike in power pole # 340753  
 10'± right sta. 2+33 bet. P.I.'s A-4 & A-5

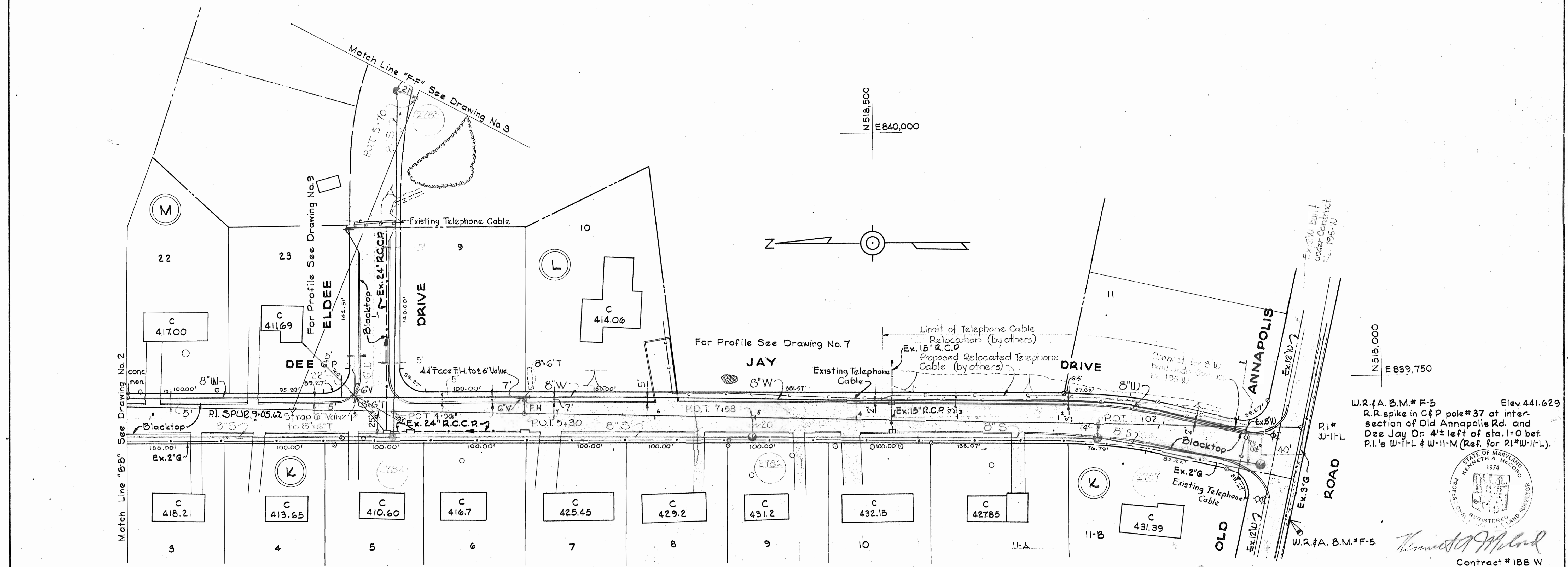
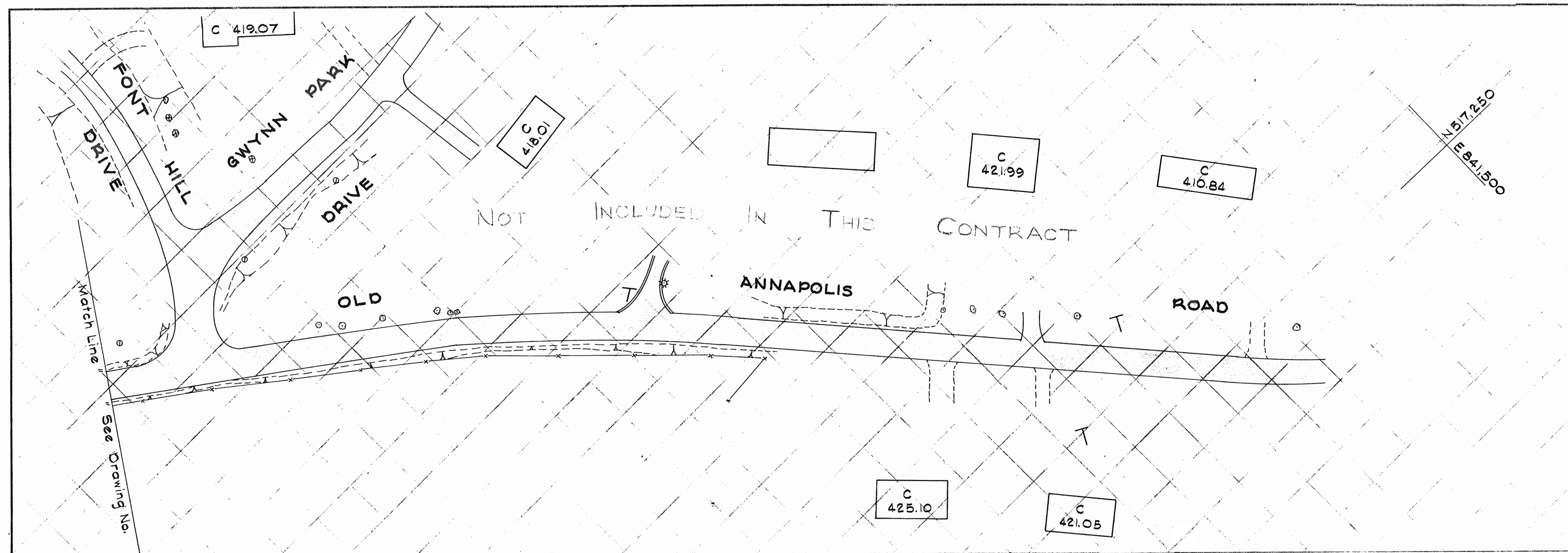
W.R.#A. B.M.# 34-D Elev. 328.69  
 R.R. spike in G&E power pole # 363456,  
 30'± left of Sta. 3+07 between P.I.#W-7  
 & P.I.#W-8.

WHITMAN, REQUARDT & ASSOCIATES ENGINEERS 1304 ST. PAUL ST. BALTIMORE, MARYLAND	HOWARD COUNTY METROPOLITAN COMMISSION DATE 7-16-68 W.O. Gilbert CHIEF ENGINEER	CONTRACT NO. 188-W	PLAN OF WATER AND SEWER MAINS	ELLICOTT CITY - GWYNN ACRES ELECTION DISTRICT - ELLICOTT CITY No. 2	DRAWING NO. 5 OF 9 SCALE 1"=50' Contract #188W
---	---	--------------------	----------------------------------	--	--

W. O. 5839-2

NOV 1 1968

AS BUILT



W.R.#A. B.M.#F-5 Elev. 441.629  
 R.R. spike in C&P pole#37 at inter-  
 section of Old Annapolis Rd. and  
 Dee Jay Dr. 4' left of sta. 1+0 bet.  
 P.I.'s W-11-L & W-11-M (Ref. for P.I.\*W-11-L).



*Kenneth A. McCord*  
 Contract # 188 W

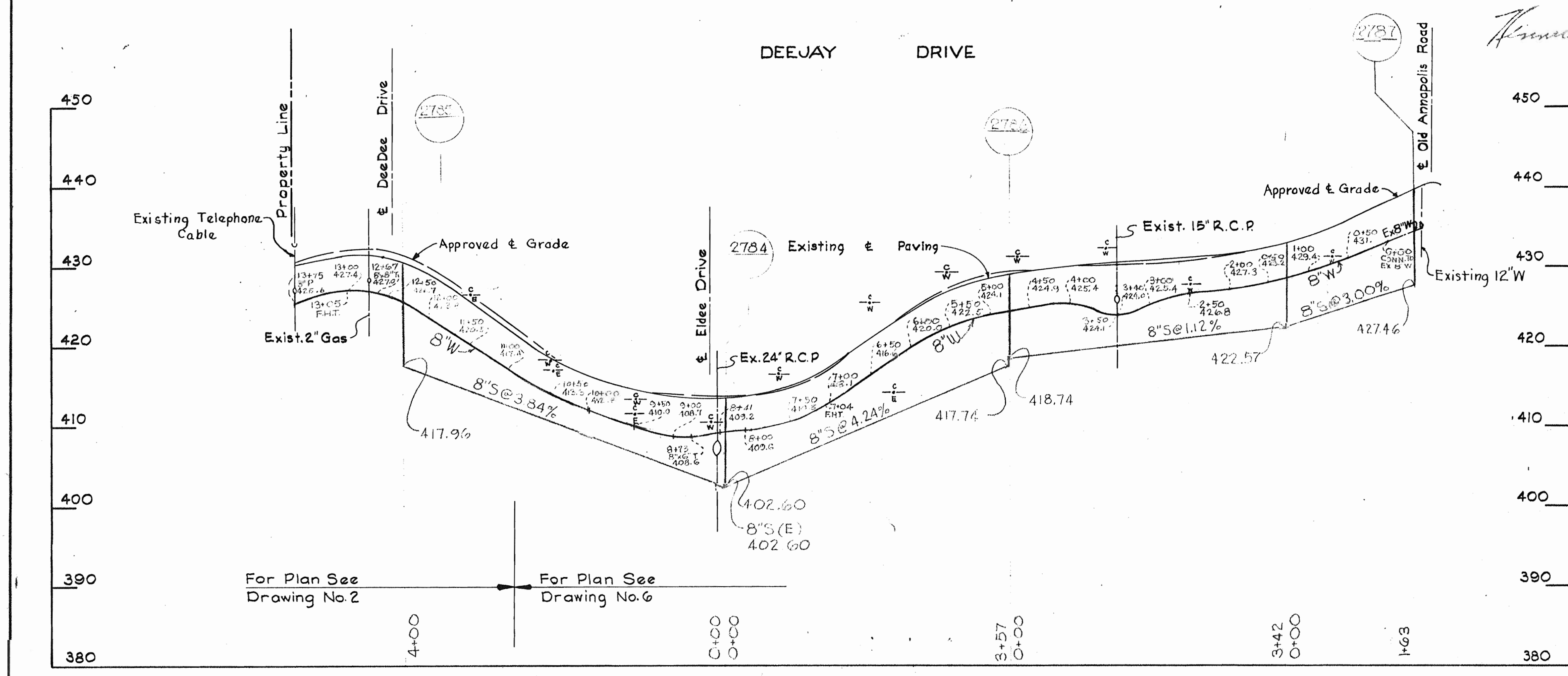
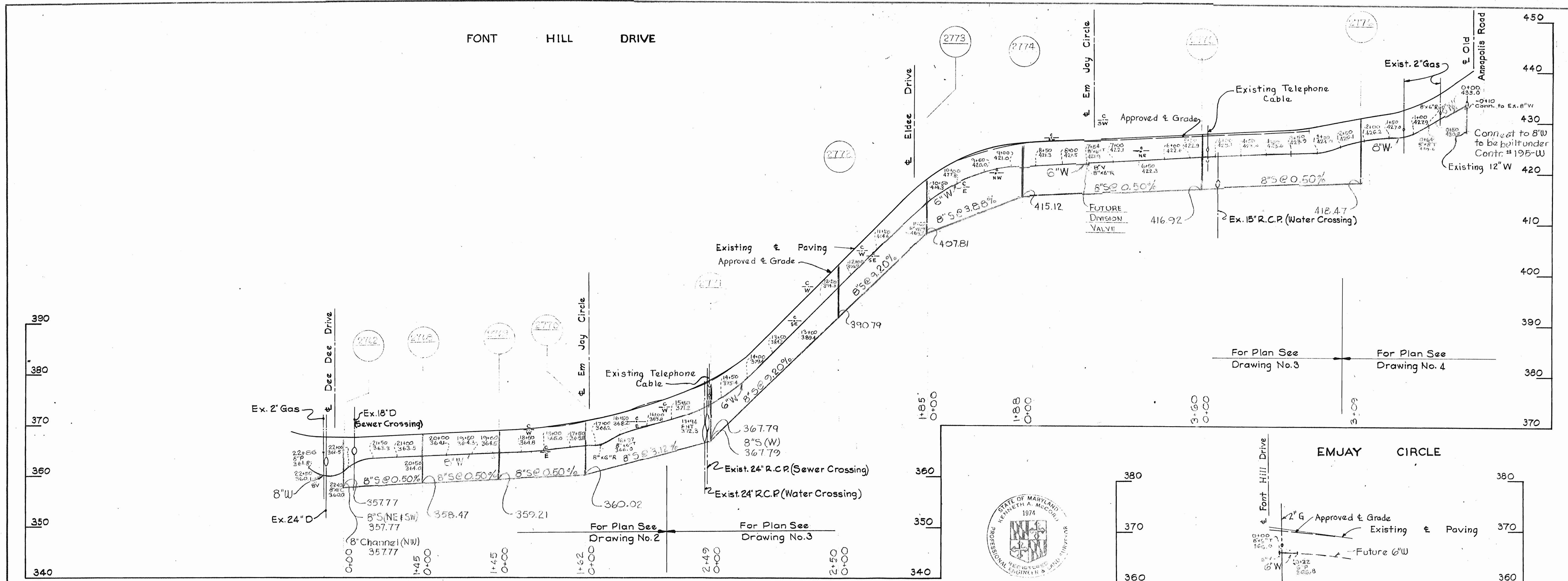
WHITMAN, REQUARDT & ASSOCIATES ENGINEERS 1304 ST. PAUL ST. BALTIMORE, MARYLAND	HOWARD COUNTY METROPOLITAN COMMISSION DATE 7-16-68 <i>W.O. Robert</i> CHIEF ENGINEER	CONTRACT NO. 188-W	PLAN OF WATER AND SEWER MAINS	ELLICOTT CITY - GWYNN ACRES ELECTION DISTRICT - ELLICOTT CITY No. 2	DRAWING NO. 6 OF 9 SCALE 1"=50' P.D. 3864
---	---	--------------------	----------------------------------	--	---

W. O. 5839-2

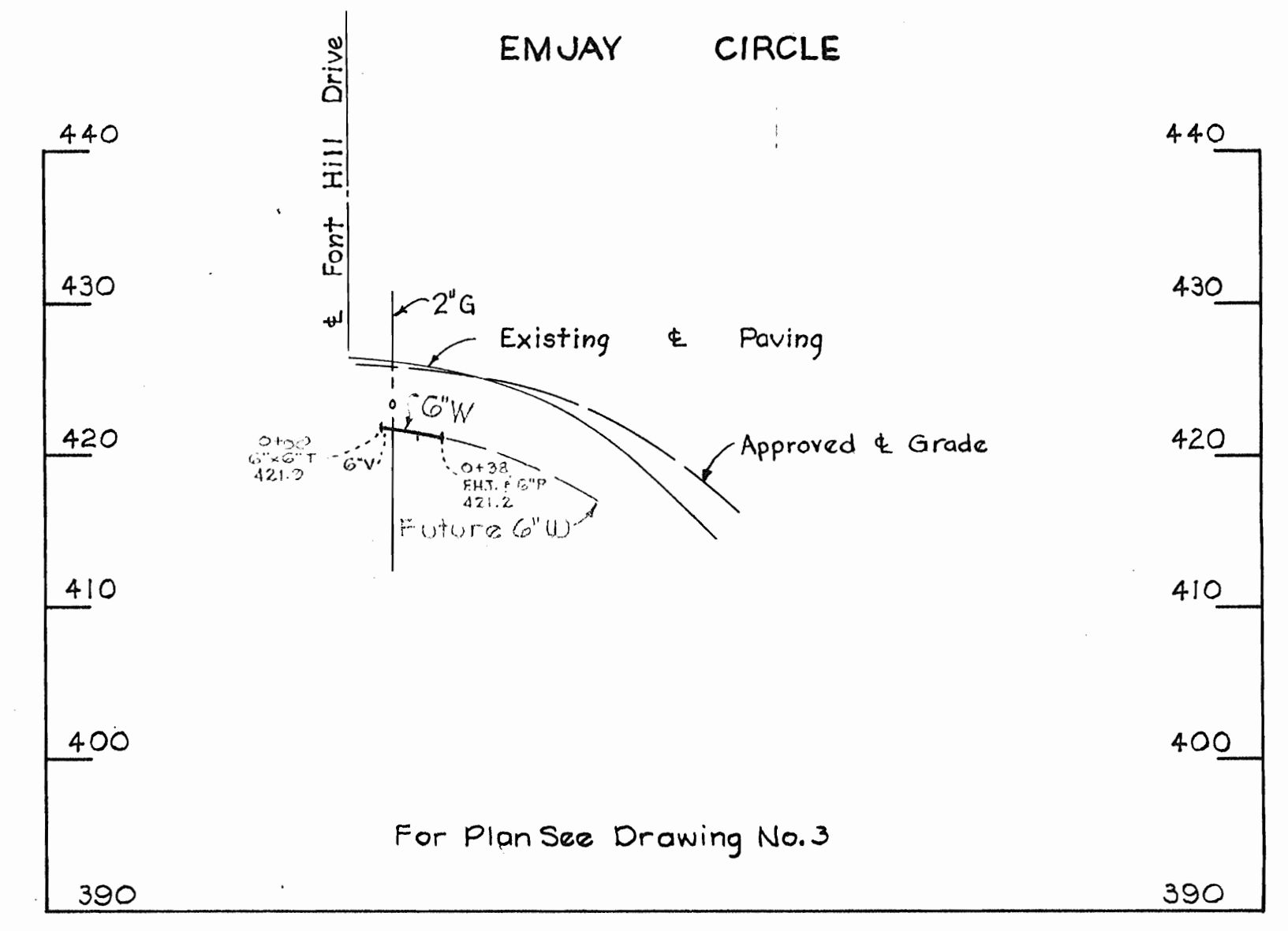
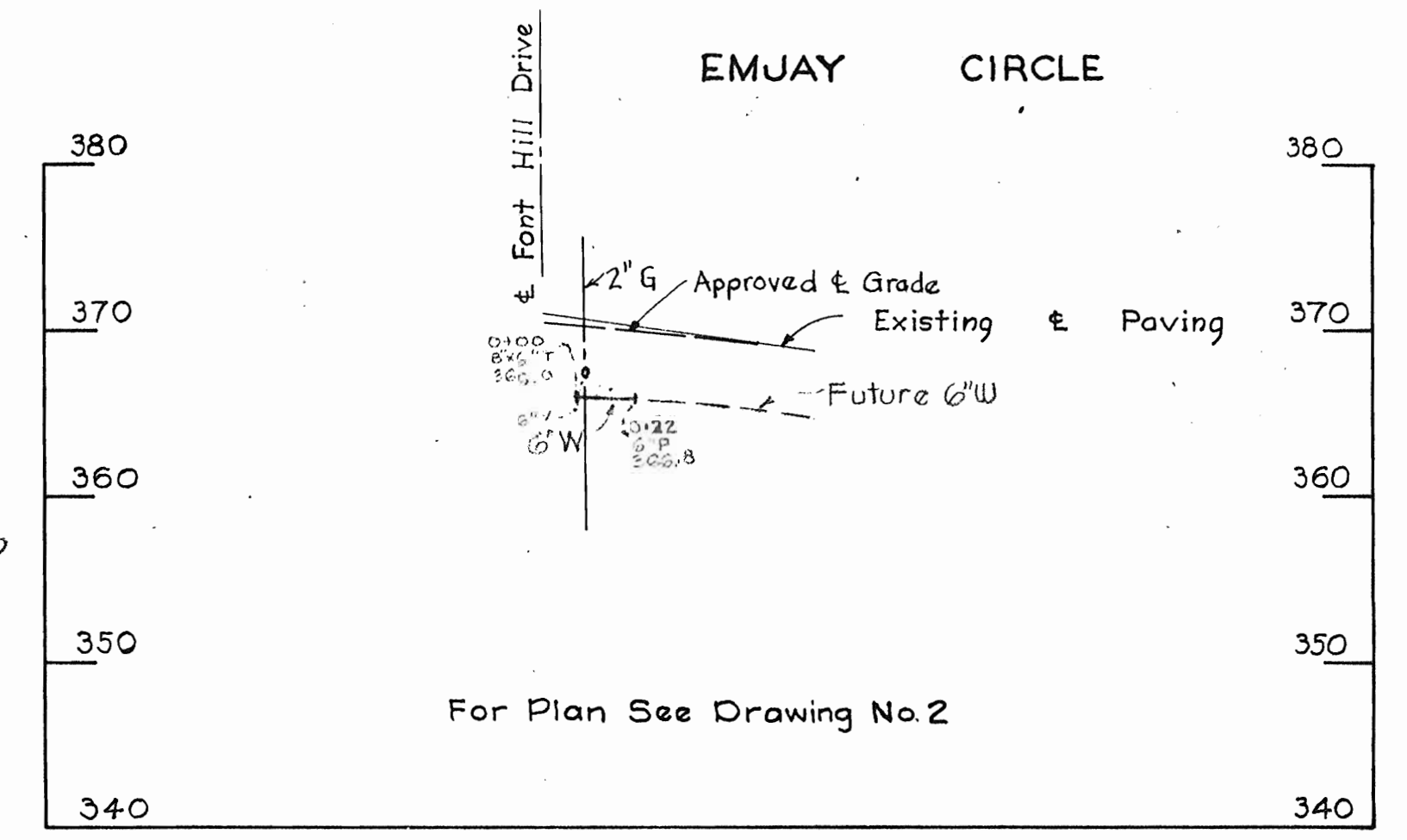
AS BUILT

WS 188-W/6

WS 188-W/7



*Kenneth A. Mulford*

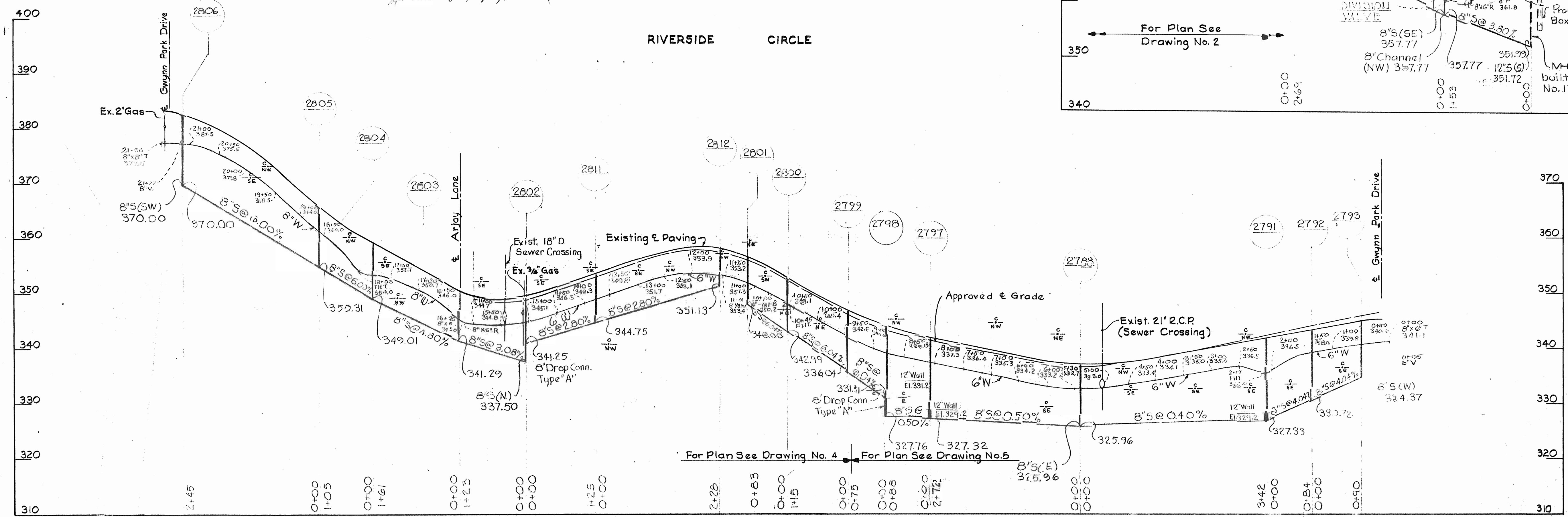
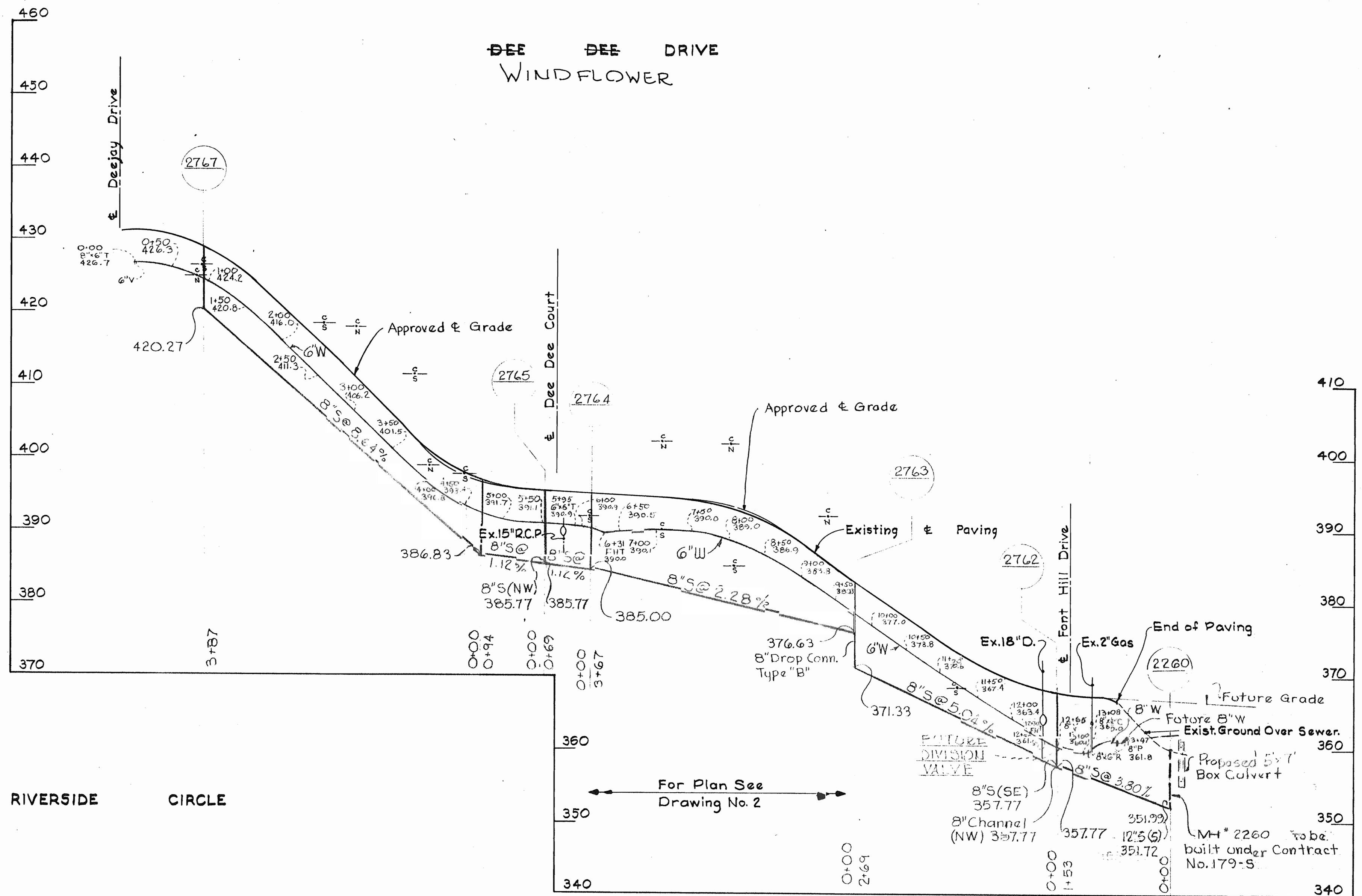
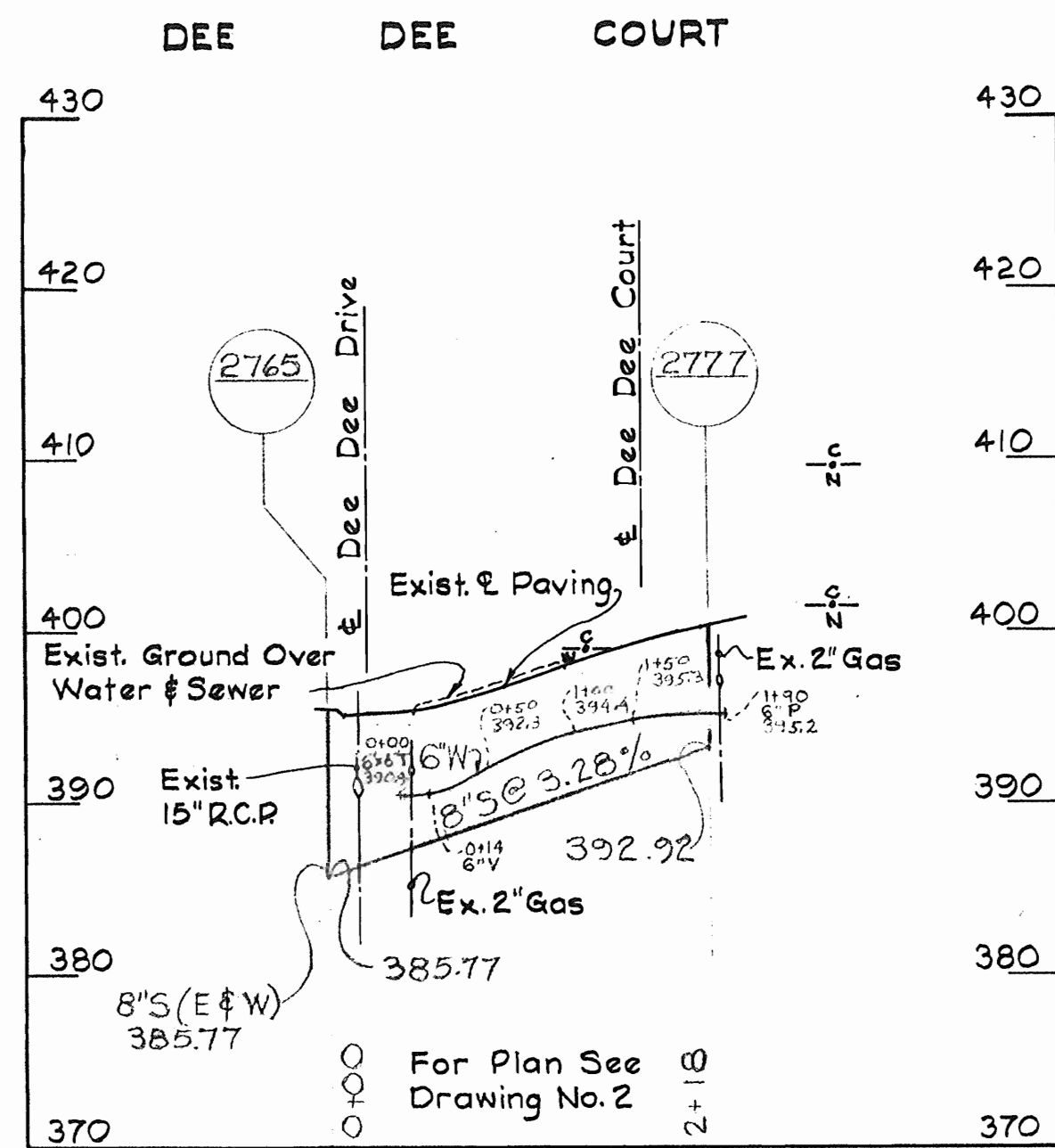


WHITMAN, REQUARDT & ASSOCIATES ENGINEERS 1304 ST. PAUL ST. BALTIMORE, MARYLAND	HOWARD COUNTY METROPOLITAN COMMISSION DATE: 7-16-68 W. O. F. <i>W. O. F. Liberty</i> CHIEF ENGINEER	CONTRACT NO. 188-W	PROFILES OF WATER AND SEWER MAINS	ELLICOTT CITY - GWYNN ACRES ELECTION DISTRICT - ELLICOTT CITY No. 2	DRAWING NO. 7 OF 9	SCALE H. 1"=100' V. 1"=10'
					Contract # 188 W	

W. O. 5839-2

NOV. 1, 1968

AS BUILT



*Kenneth A. McCord*

Contract # 188 W

WHITMAN, REQUARDT & ASSOCIATES  
ENGINEERS  
1304 ST. PAUL ST.  
BALTIMORE, MARYLAND

HOWARD COUNTY METROPOLITAN COMMISSION  
7-16-68 *W. O. Lubert*  
DATE CHIEF ENGINEER

CONTRACT NO. 188-W

PROFILES OF  
WATER AND SEWER MAINS

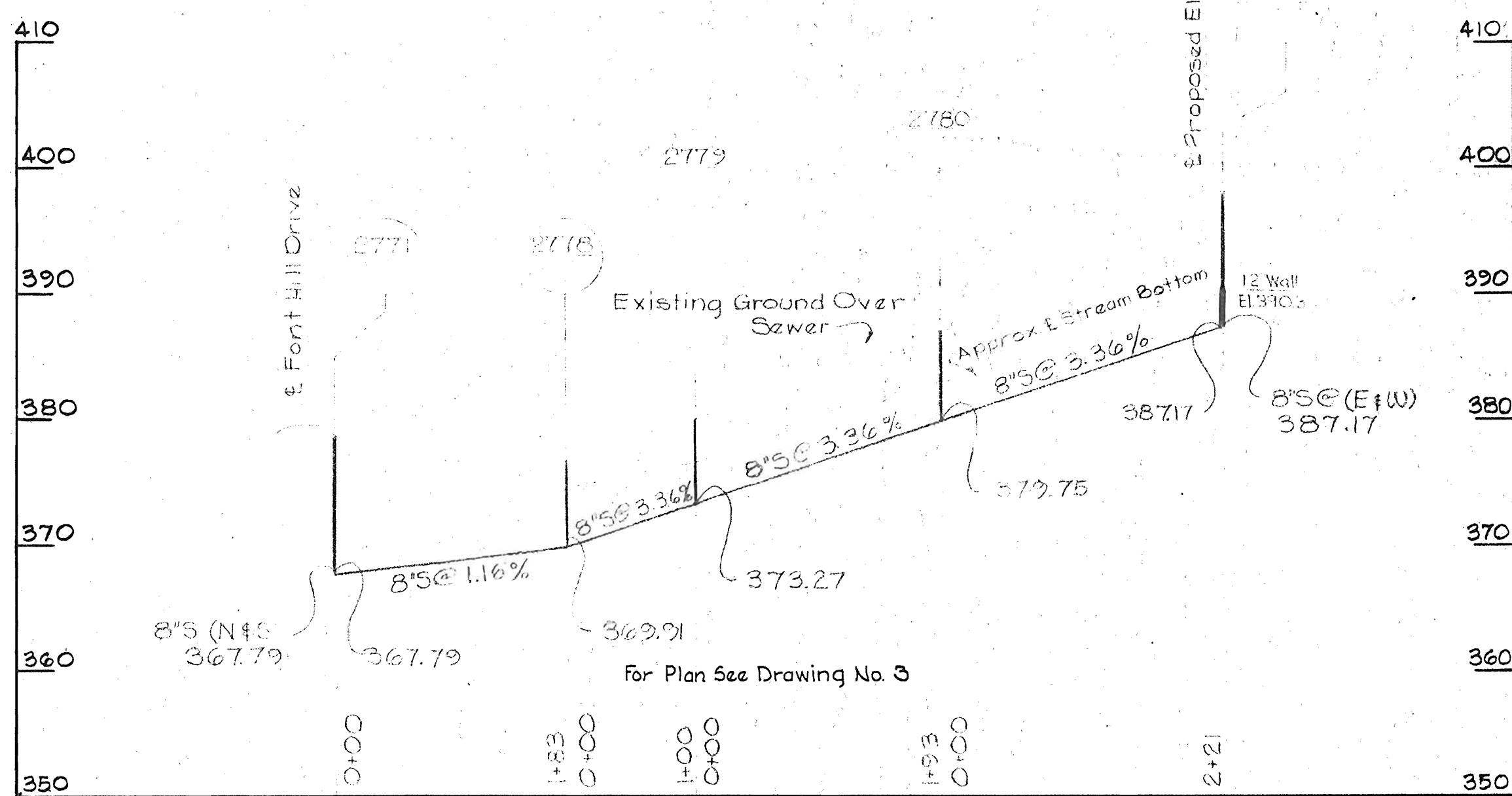
ELLCOTT CITY - GWYNN ACRES  
ELECTION DISTRICT - ELLCOTT CITY No. 2

DRAWING NO. 8 OF 9  
SCALE H. 1"=400 V. 1"=10'

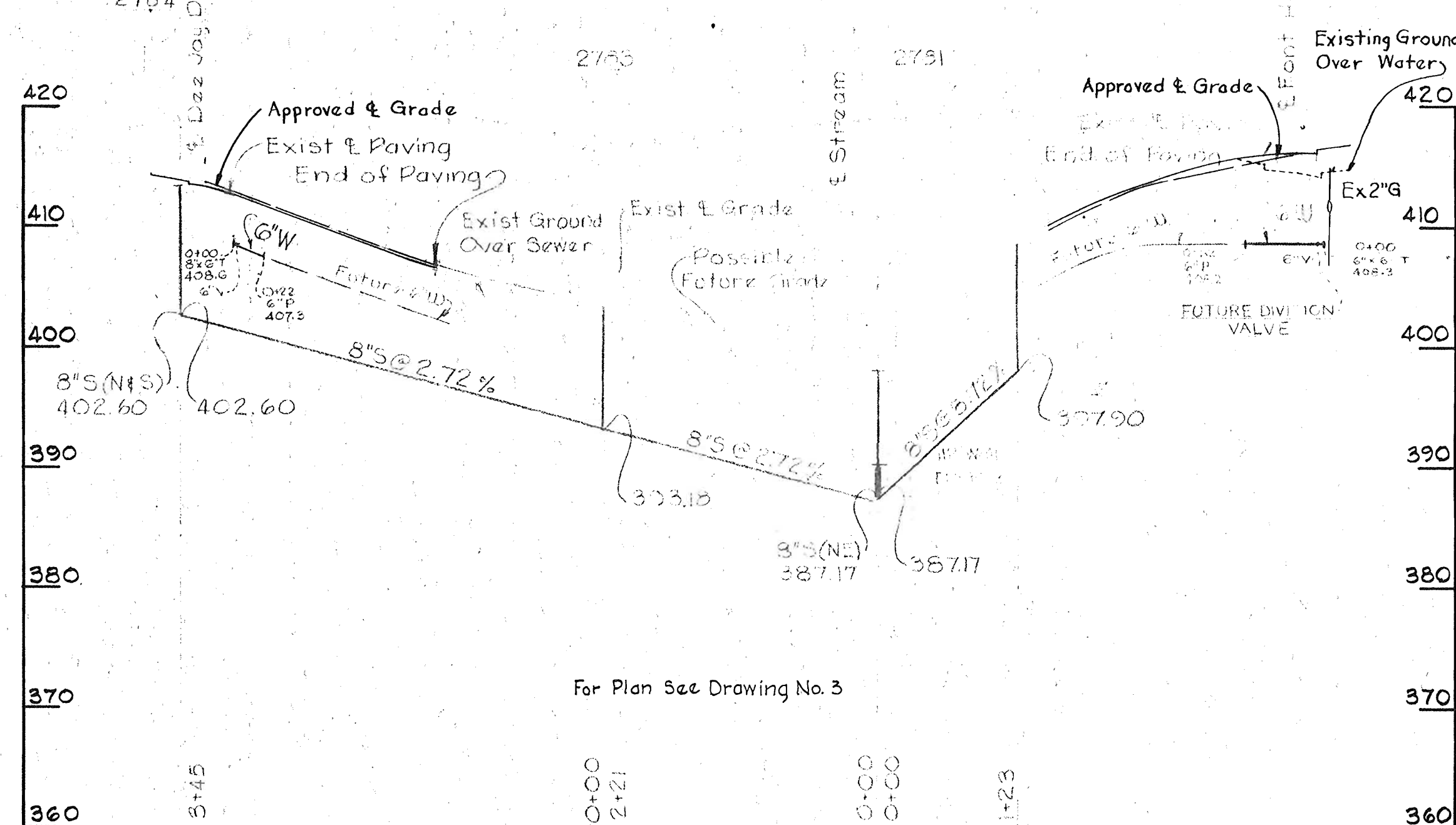
WS 188-W/8



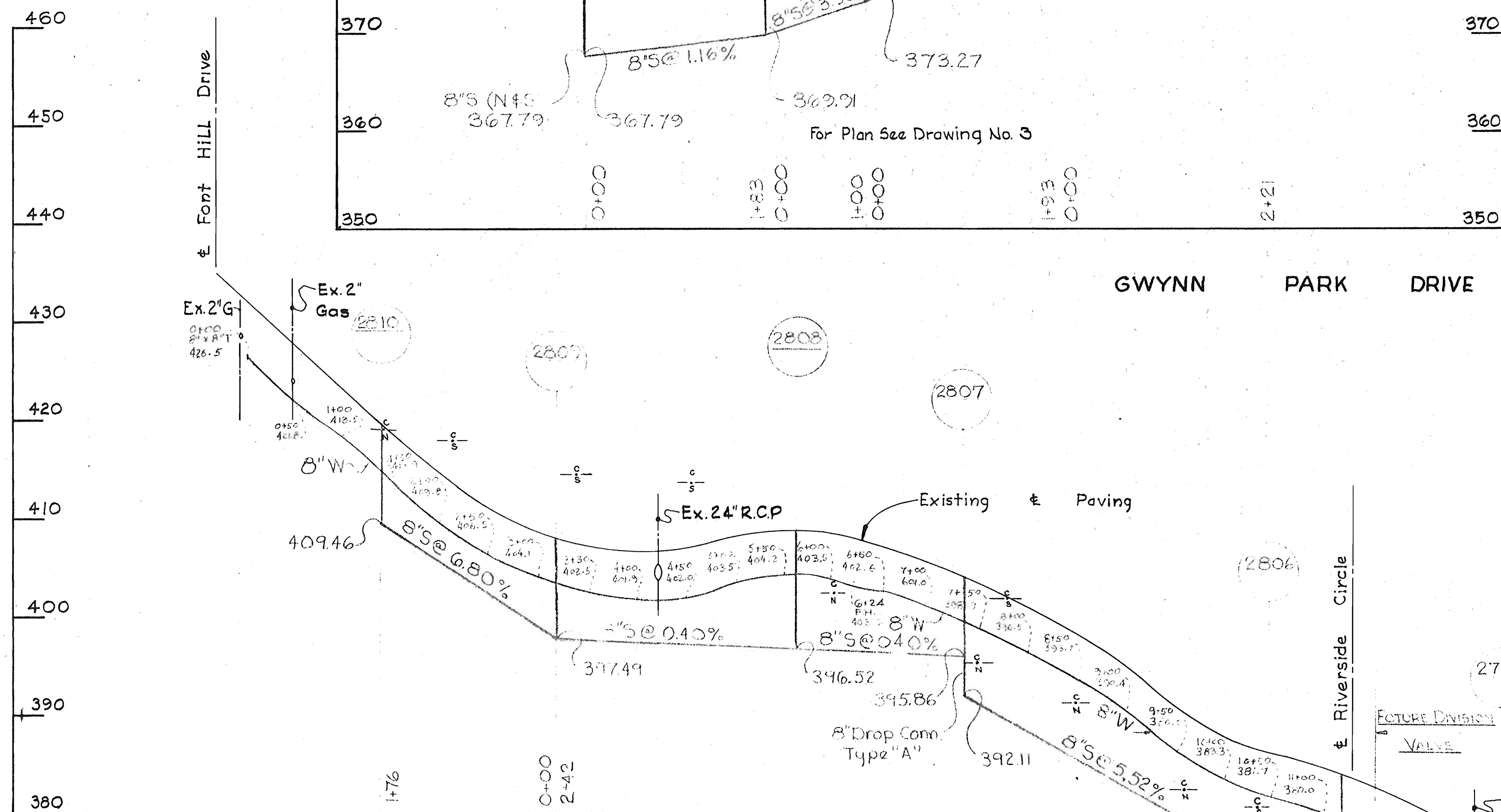
SEWER THRU LOTS 5, 7 & 8



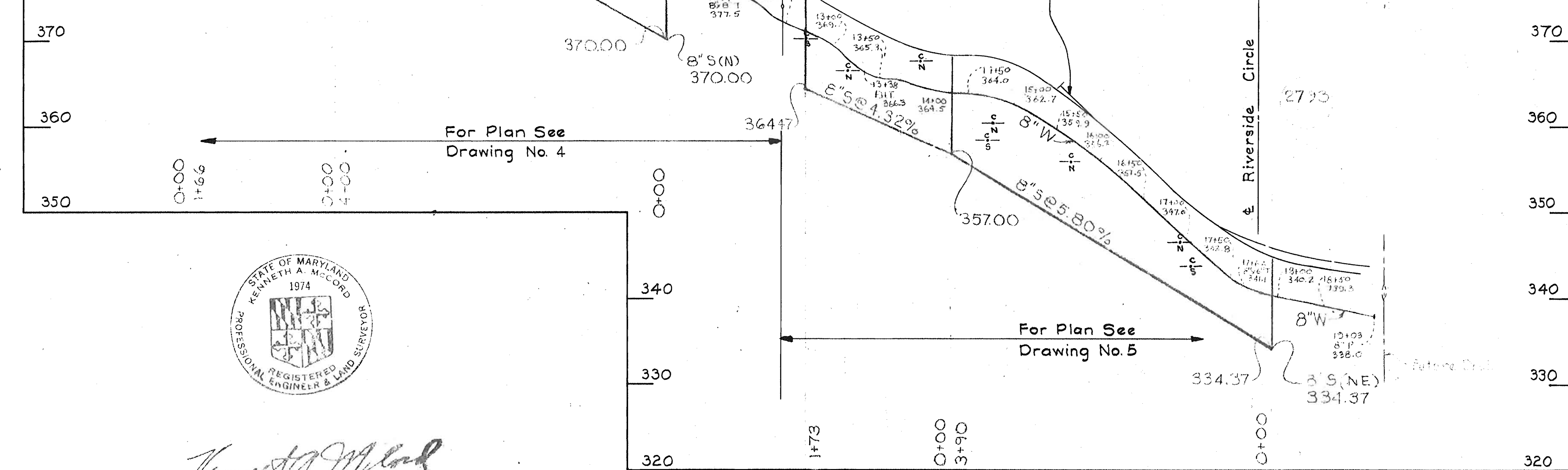
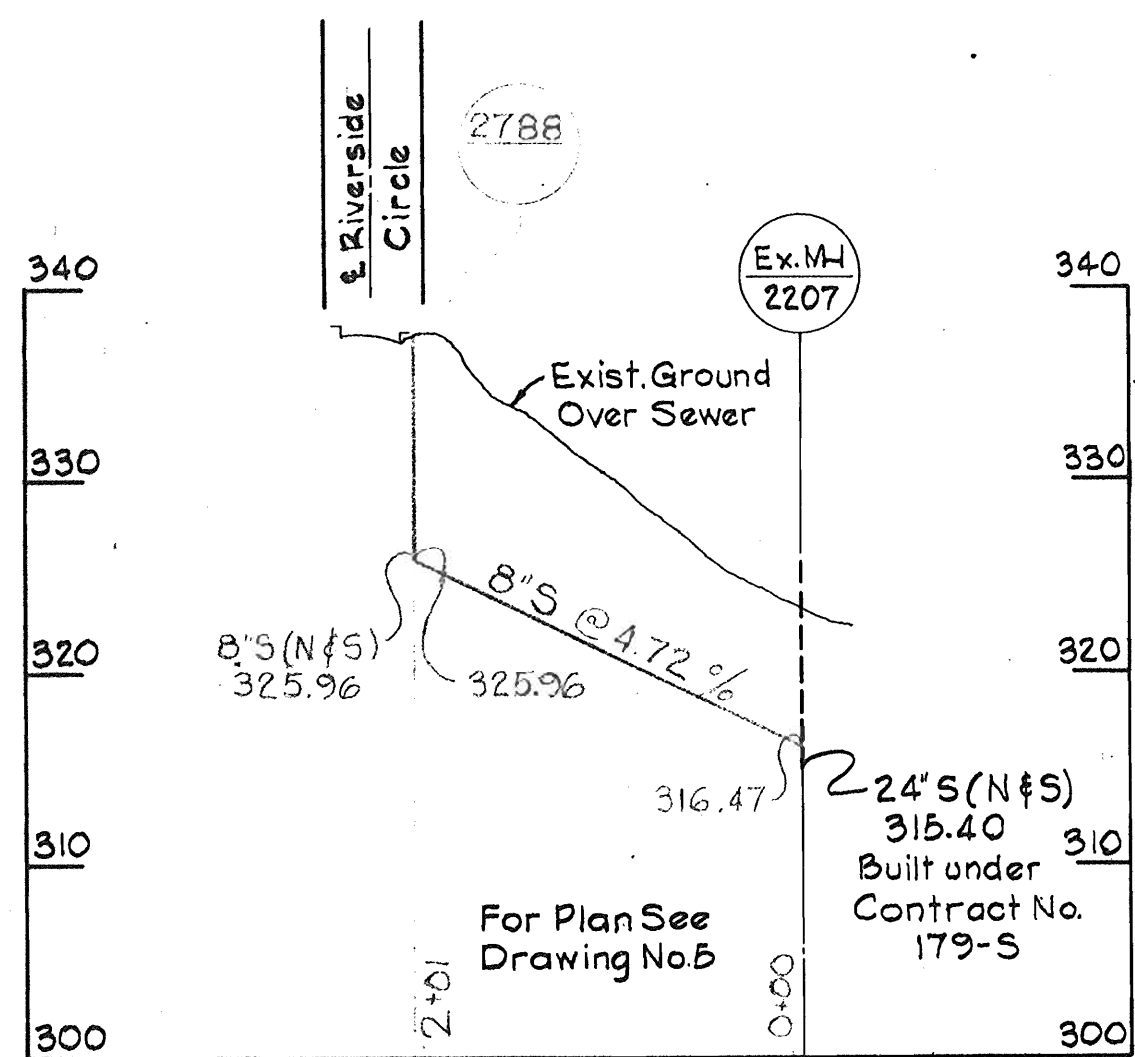
ELDEE DRIVE



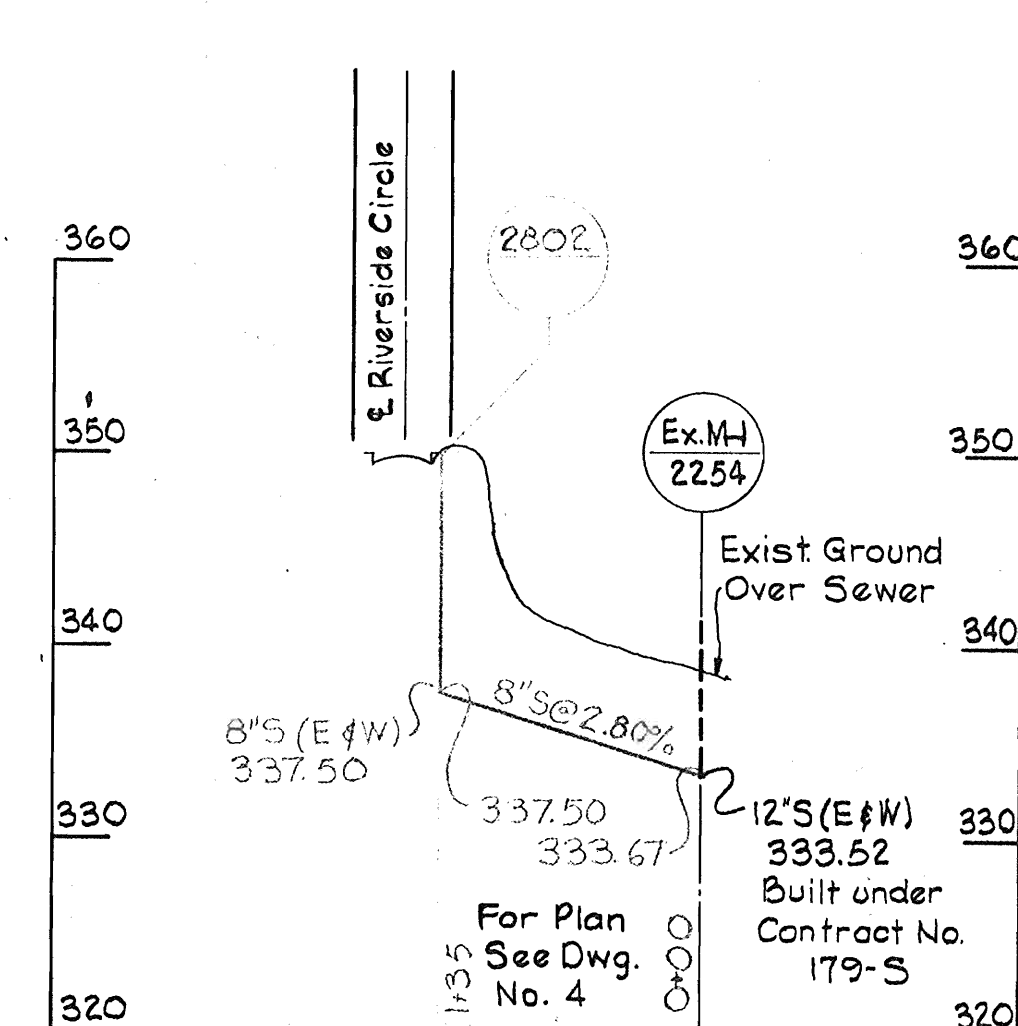
GWYNN PARK DRIVE



SEWER THRU LOT 9



8\"/>



*Kenneth A. McCord*

WHITMAN, REQUARDT & ASSOCIATES  
ENGINEERS  
1304 ST. PAUL ST.  
BALTIMORE, MARYLAND

HOWARD COUNTY METROPOLITAN COMMISSION  
7-16-68 *W. O. Liburt*  
DATE CHIEF ENGINEER

CONTRACT NO. 188-W

PROFILES OF  
WATER AND SEWER MAINS

ELLCOTT CITY - GWYNN ACRES  
ELECTION DISTRICT - ELLCOTT CITY No. 2

DRAWING  
NO. 9  
OF 9

SCALE  
H. 1"=100'  
V. 1"=10'

Contract # 188 W

11/20/68

AS BUILT

W. O. 5639-2

WS 188-W/9