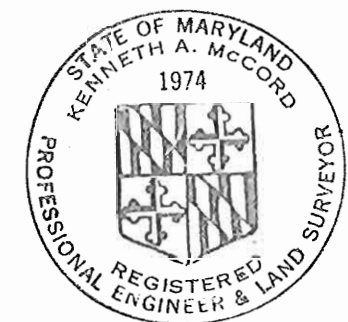


CONTRACT 187-S
SEWER MAIN EXTENSIONS
HOWARD COUNTY METROPOLITAN COMMISSION
ELLICOTT CITY, MARYLAND

Stakeout in F.B.#4402
 DIARY in F.B.#4376
 8"x6" Tees used for S.H.C.



Kenneth A. McCord

Contract # 187 S

WHITMAN, REQUARDT & ASSOCIATES ENGINEERS 1304 ST. PAUL ST. BALTIMORE, MARYLAND	HOWARD COUNTY METROPOLITAN COMMISSION 6-18-68 <i>w o Falbat</i> <small>DATE CHAIRMAN</small>	CONTRACT NO. 187-S	LOCATION MAP OF SEWER MAIN EXTENSIONS	CLAYBURN HILLS, PINE ORCHARD, FAIRWAY HILLS ELECTION DISTRICT-ELLICOTT CITY NO.2	DRAWING NO. 1 OF 8	SCALE AS SHOWN
---	--	--------------------	--	---	-----------------------	----------------

W.O. 5839-2

Nov 20, 1969 AS SHOWN

WS 187-S/1

W.R. & A. B.M. # L-2 H.C. Elev. 403.94
 □ cut on metal corner inlet @ corner
 Burnside & Tustin Rd., 30' Lt. Sta. 2+1/5
 Between L-4 & L-6

Match Line "A-A" See Drawing N° 5

GENERAL NOTES

1. Approximate location of existing mains are shown. The Contractor shall take all necessary precautions to protect mains and services and maintain uninterrupted supply. Any damage incurred shall be repaired immediately.
2. All pipe elevations shown are invert (I) elevations.
3. The Contractor shall locate existing utilities a minimum of two weeks in advance of construction operations in vicinity of utilities.
4. For standard details see standards bound in Specifications.
5. Clear all utilities by a minimum of 6', clear all poles by 2'-0" minimum or tunnel as required.
6. The Contractor shall provide a joint in all sewer mains within 2'-0" of exterior manhole walls.
7. All manholes shall be 4'-0" inside diameter.
8. All elevations based on Howard County Datum.

No.	Date	Added	Drawings to	Division
1	2-2-09	Added	Driveways to Tustin Road.	

WHITMAN, REQUARDT & ASSOCIATES
 ENGINEERS
 1304 ST. PAUL ST.
 BALTIMORE, MARYLAND

HOWARD COUNTY METROPOLITAN COMMISSION
 6-18-68 *ewo Pickett*
 DATE CHIEF ENGINEER

CONTRACT NO. 187-S

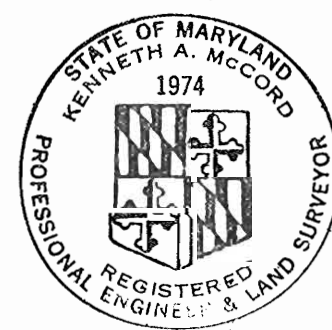
PLAN OF
 SEWER MAINS

CLAYBURN HILLS, PINE ORCHARD, FAIRWAY HILLS
 ELECTION DISTRICT-ELLCOTT CITY NO. 2

DRAWING NO. 2 OF 8
 SCALE 1"=50'

W.R. & A. B.M. # L-1 H.C. Elev. 419.05
 R.R. Spike in base of Power Pole
 C. & P. # 20 3' Lt. Sta. 1+15 between
 Pl. L-11 & L-12

Contract No. 187-S



Kenneth A. McCord

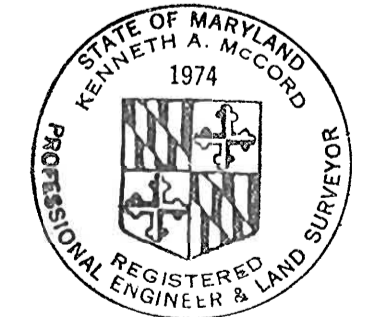
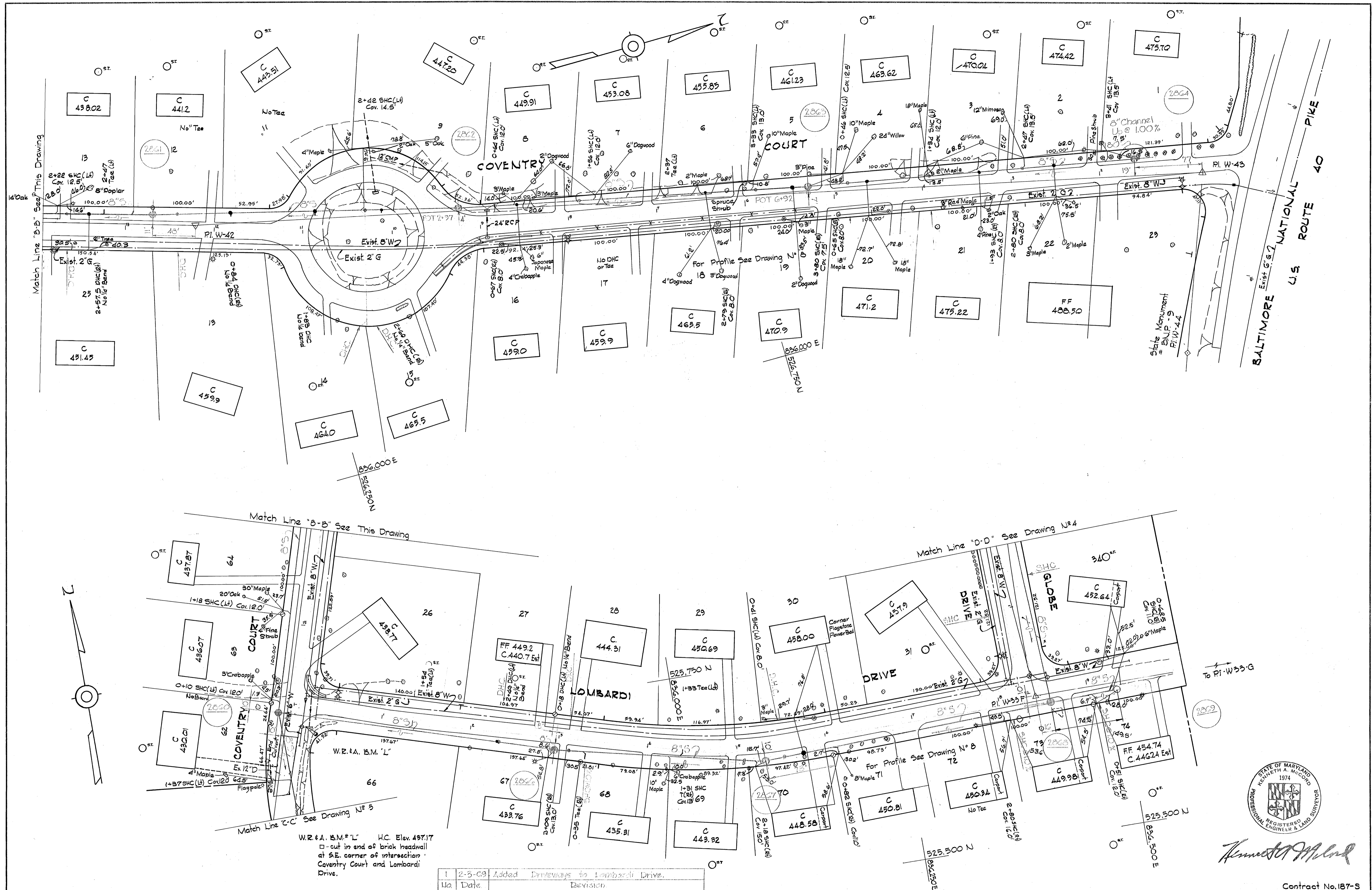
AS BUILT Nov 20, 1969

FB 3864

W.O. 5899-2

187-S/2

WS



Kenneth A. McLeod

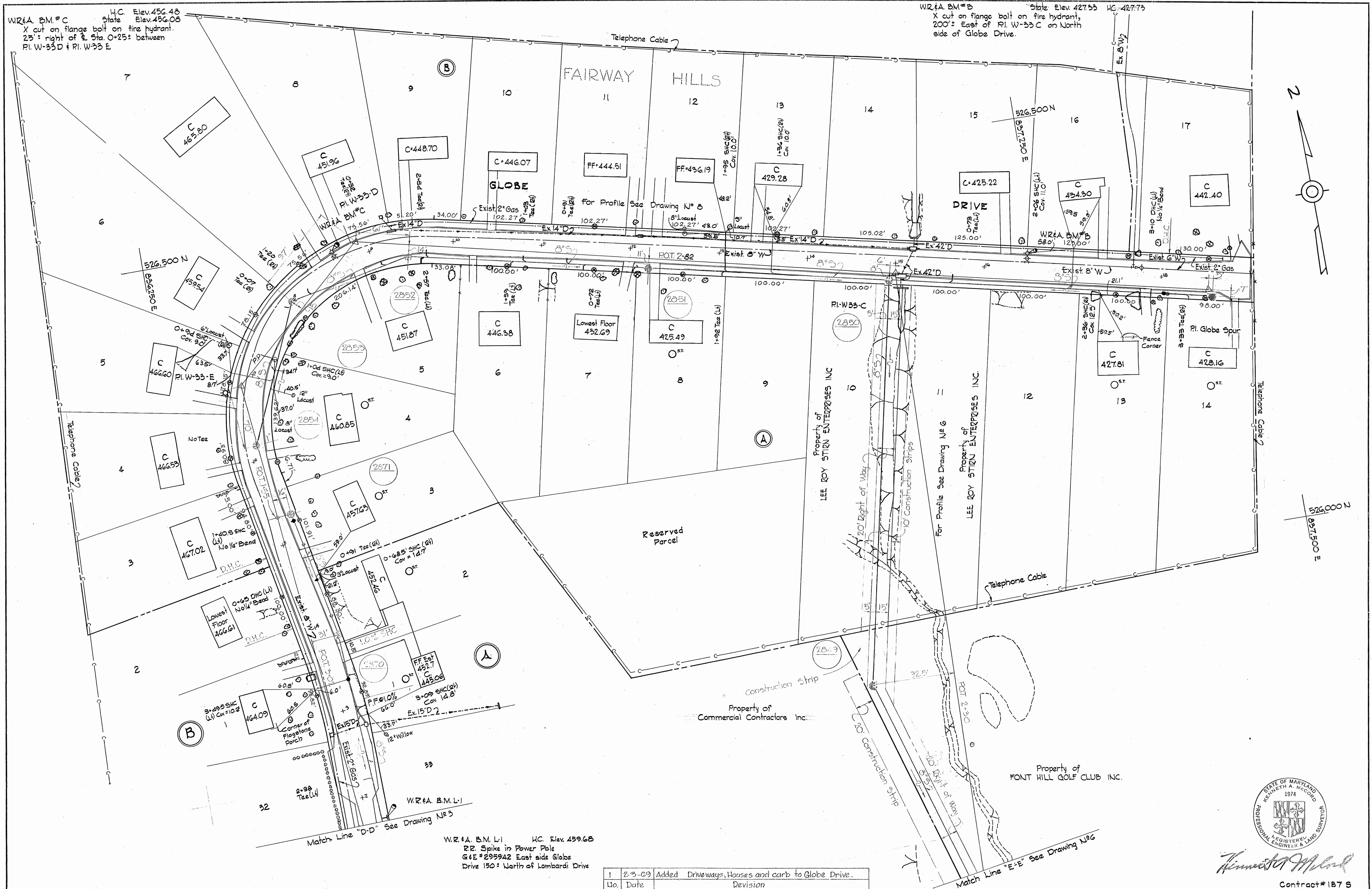
No.	Date	Revision
1	2-3-69	Added Driveways to Lombardi Drive.

WHITMAN, REQUARDT & ASSOCIATES ENGINEERS 1304 ST. PAUL ST. BALTIMORE, MARYLAND	HOWARD COUNTY METROPOLITAN COMMISSION 6-18-68 <i>W O Fallert</i> DATE CHIEF ENGINEER	CONTRACT NO. 187-S	PLAN OF SEWER MAINS	CLAYBURN HILLS, PINE ORCHARD, FAIRWAY HILLS ELECTION DISTRICT-ELLCOTT CITY NO.2	DRAWING NO. 3 OF 8 SCALE 1"=50' 336-478 8 SW 49 7 SW 49 FB. 2960
---	--	--------------------	------------------------	--	---

W. O. 3899-2

Nov 21 1969

WS 187-S/3



W.R.#A B.M.#C H.C. Elev. 456.48
 State Elev. 456.08
 X cut on flange bolt on fire hydrant,
 25' right of E 5th. 0-25' between
 P.I. W-33D & P.I. W-33E

W.R.#A B.M.#B State Elev. 427.53 H.C. 427.73
 X cut on flange bolt on fire hydrant,
 200' East of P.I. W-33C on North
 side of Globe Drive.

W.R.#A B.M.#L1 H.C. Elev. 459.68
 R.R. Spike in Power Pole
 G&E #295942 East side Globe
 Drive 150' North of Lombardi Drive

1	2-3-69	Added Driveways, Houses and curb to Globe Drive.
No.	Date	Revision



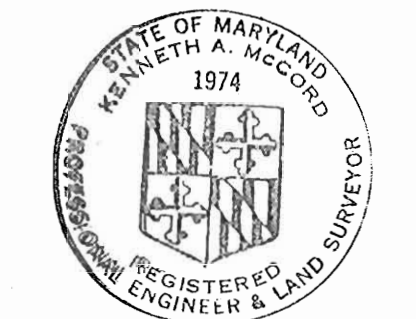
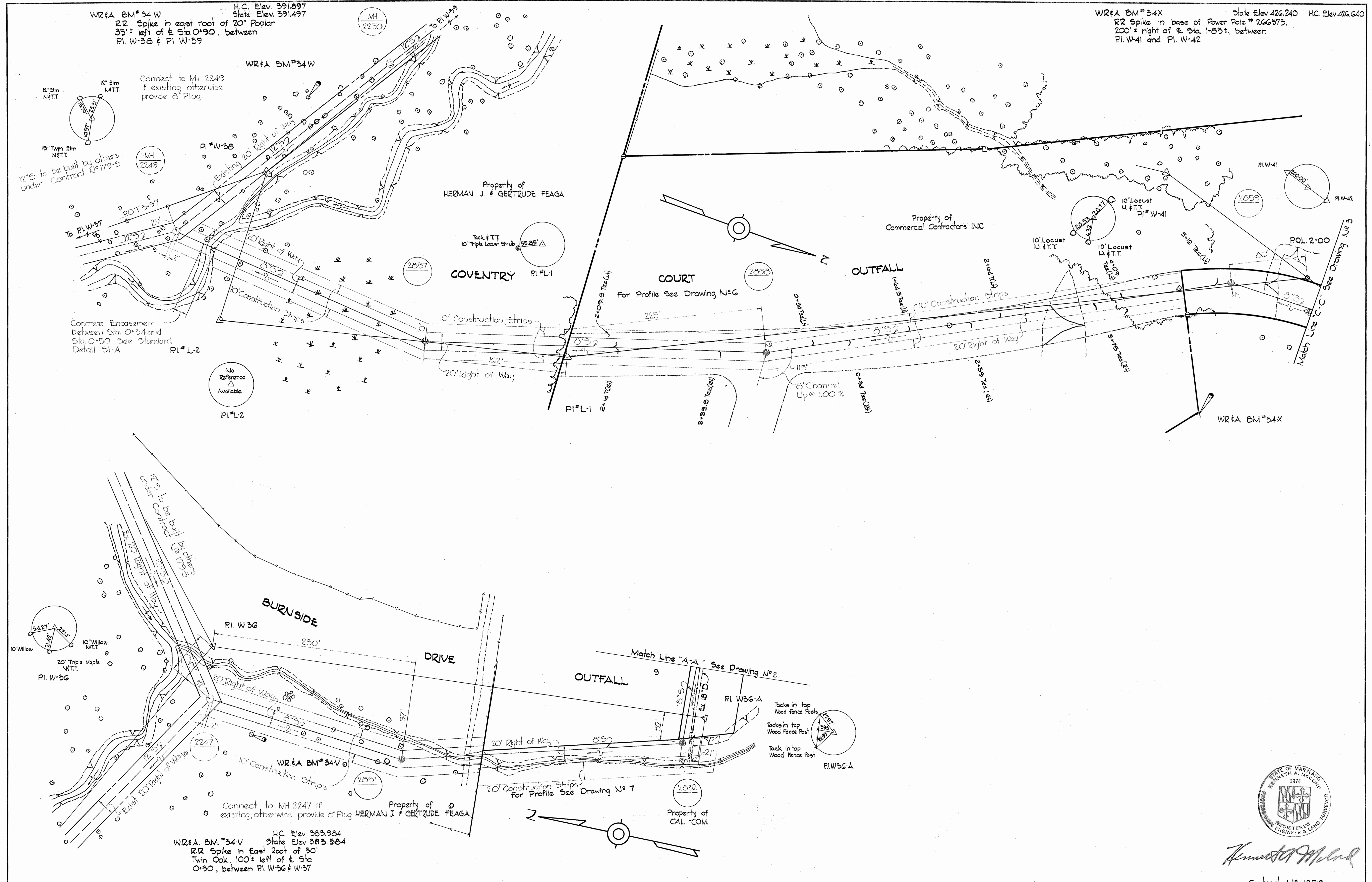
Kenneth A. Accord
 Contract # 187 S

WHITMAN, REQUARDT & ASSOCIATES ENGINEERS 1304 ST. PAUL ST. BALTIMORE, MARYLAND	HOWARD COUNTY METROPOLITAN COMMISSION 6-18-68 <i>W. O. Gilbert</i> DATE CHIEF ENGINEER	CONTRACT NO. 187-S	PLAN OF SEWER MAINS	CLAYBURN HILLS, PINE ORCHARD, FAIRWAY HILLS ELECTION DISTRICT-ELLCOTT CITY NO. 2	DRAWING NO. 4 OF 8	SCALE 1"=50'
--	---	---------------------------	--------------------------------	---	-----------------------------------	-------------------------

WS 187-S/4

WR&A BM#34W H.C. Elev. 391.897
 State Elev. 391.497
 RR Spike in east root of 20" Poplar
 35' ± left of Sta. 0+90, between
 P.I. W-38 & P.I. W-39

WR&A BM#34X State Elev. 426.240 H.C. Elev. 426.640
 RR Spike in base of Power Pole # 206573,
 200' ± right of Sta. 1+85 ±, between
 P.I. W-41 and P.I. W-42



Kenneth A. McCord

Contract No. 187-S

WHITMAN, REQUARDT & ASSOCIATES ENGINEERS 1304 ST. PAUL ST. BALTIMORE, MARYLAND	HOWARD COUNTY METROPOLITAN COMMISSION 6-18-68 <i>W. O. Fullert</i> DATE CHIEF ENGINEER	CONTRACT NO. 187-S	PLAN OF SEWER MAINS	CLAYBURN HILLS, PINE ORCHARD, FAIRWAY HILLS ELECTION DISTRICT - ELLICOTT CITY NO. 2	DRAWING NO. 5 OF 8 SCALE 1"=50' 623-475 623-476 623-478 624-478
---	--	--------------------	------------------------	--	--

W. O. 5839-2

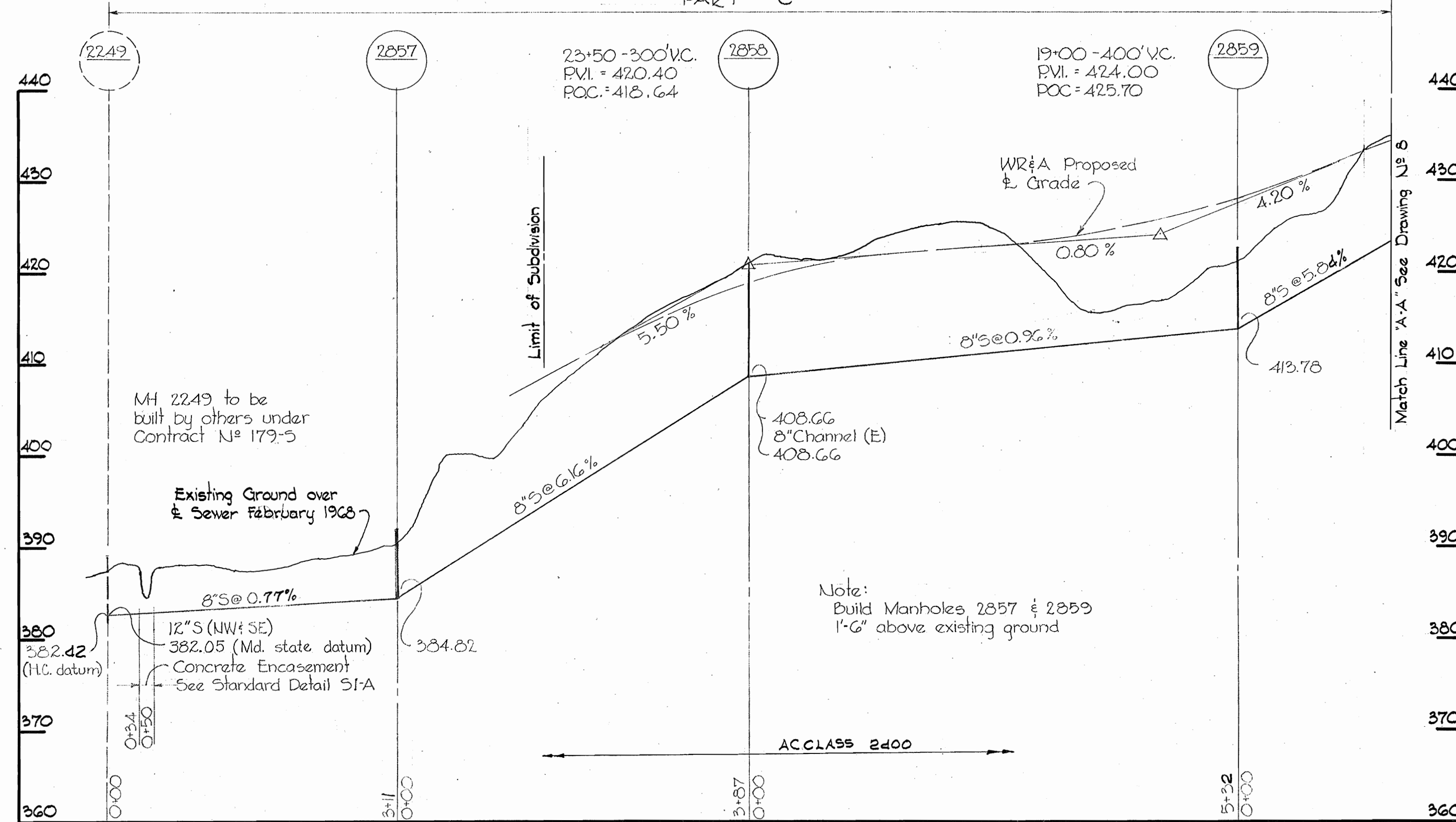
Nov. 29, 1969 AS BUILT FB 3870 FB 3827

WS 187-S/5

COVENTRY COURT OUTFALL

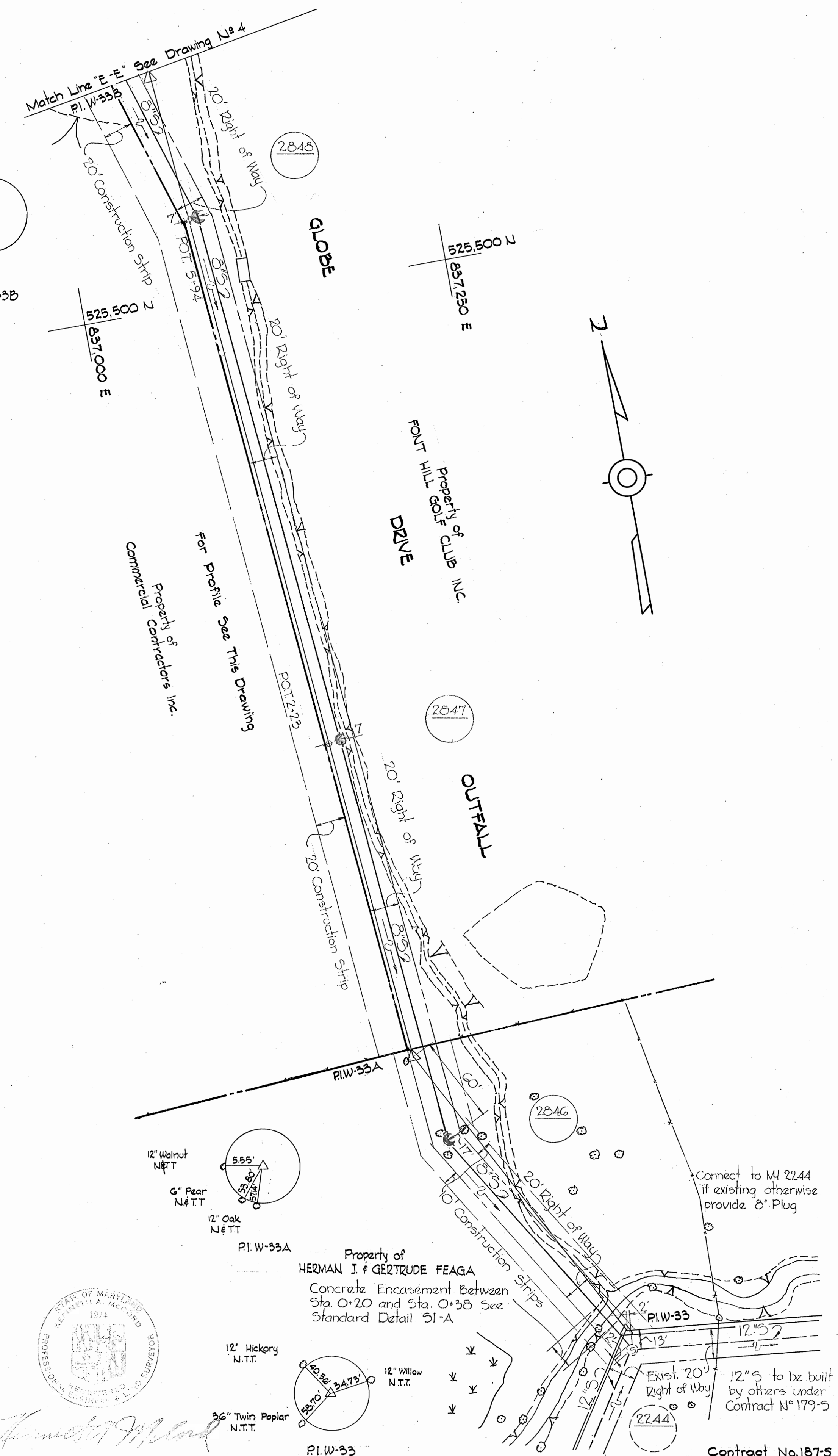
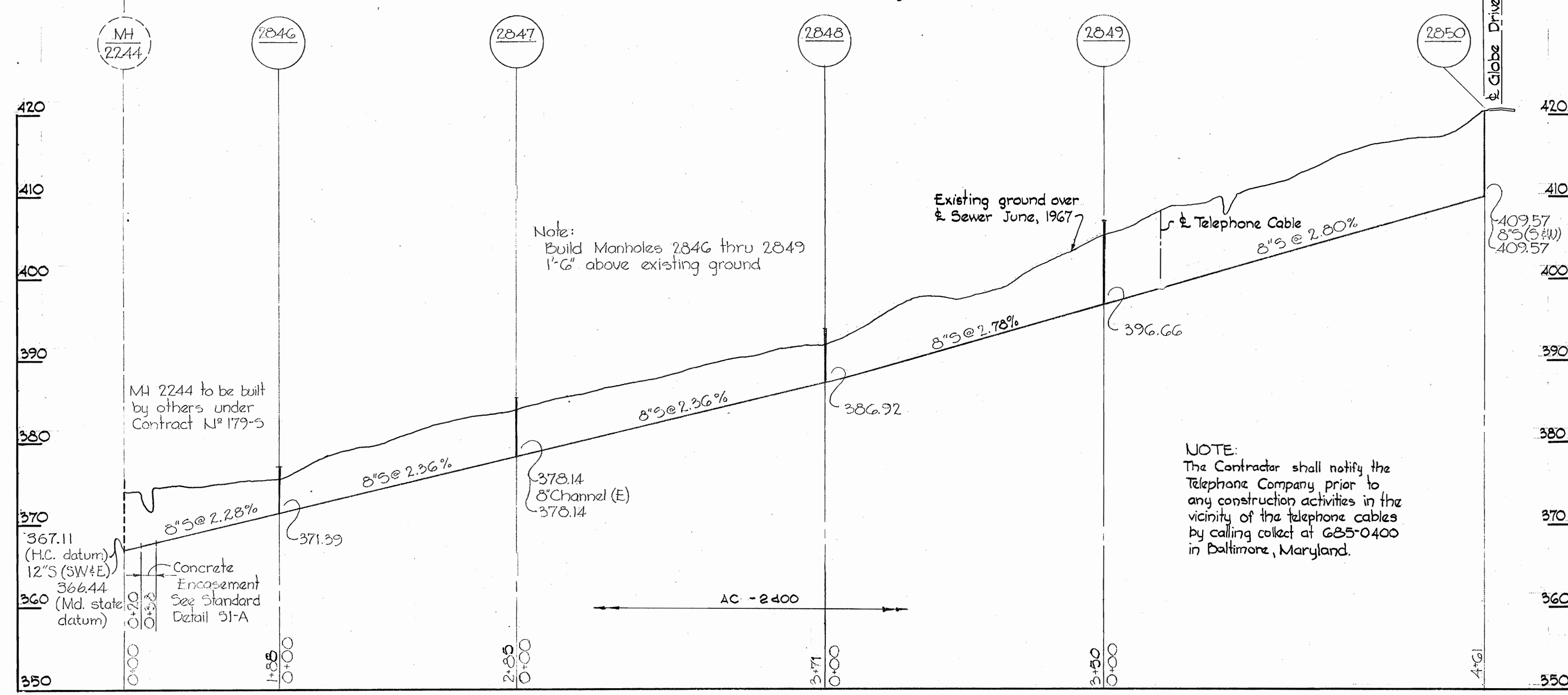
For Plan See Drawing N^o 5

PART "C"



PART "C" GLOBE DRIVE OUTFALL

For Plan See This Drawing



WHITMAN, REQUARDT & ASSOCIATES
ENGINEERS
1304 ST. PAUL ST.
BALTIMORE, MARYLAND

HOWARD COUNTY METROPOLITAN COMMISSION
DATE: 6-18-68
CHIEF ENGINEER: [Signature]

CONTRACT NO. 187-S

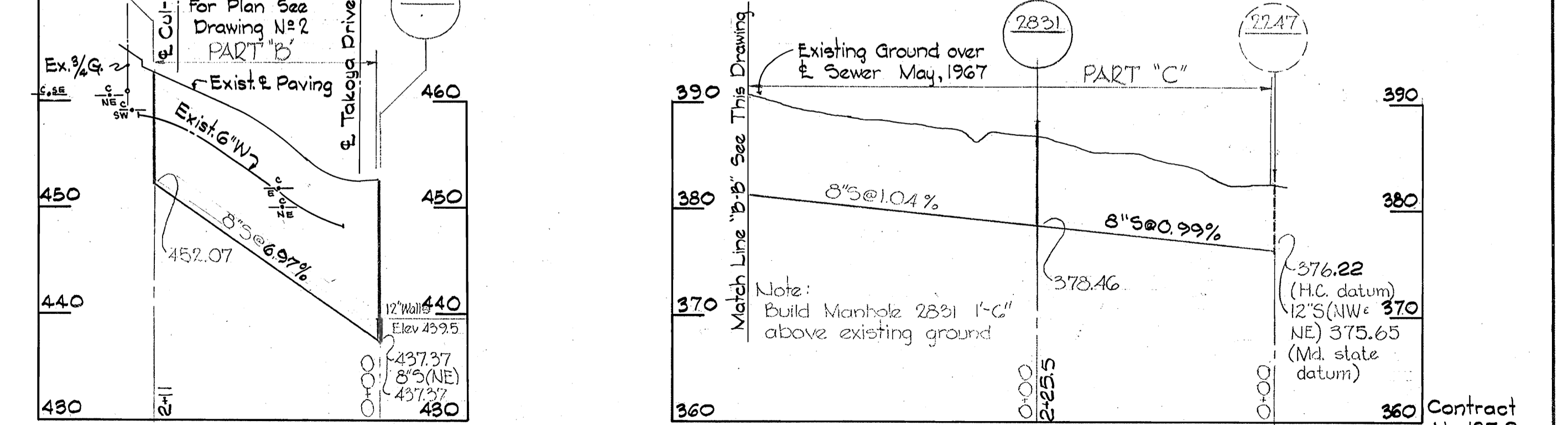
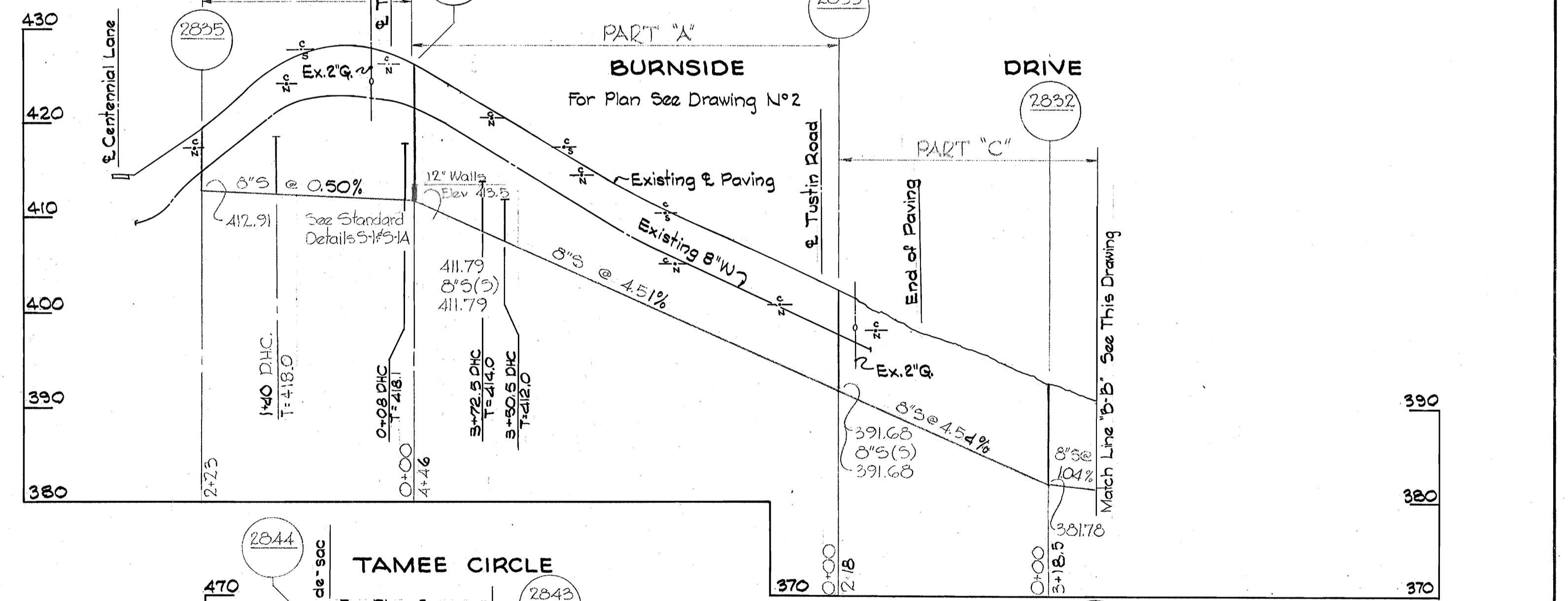
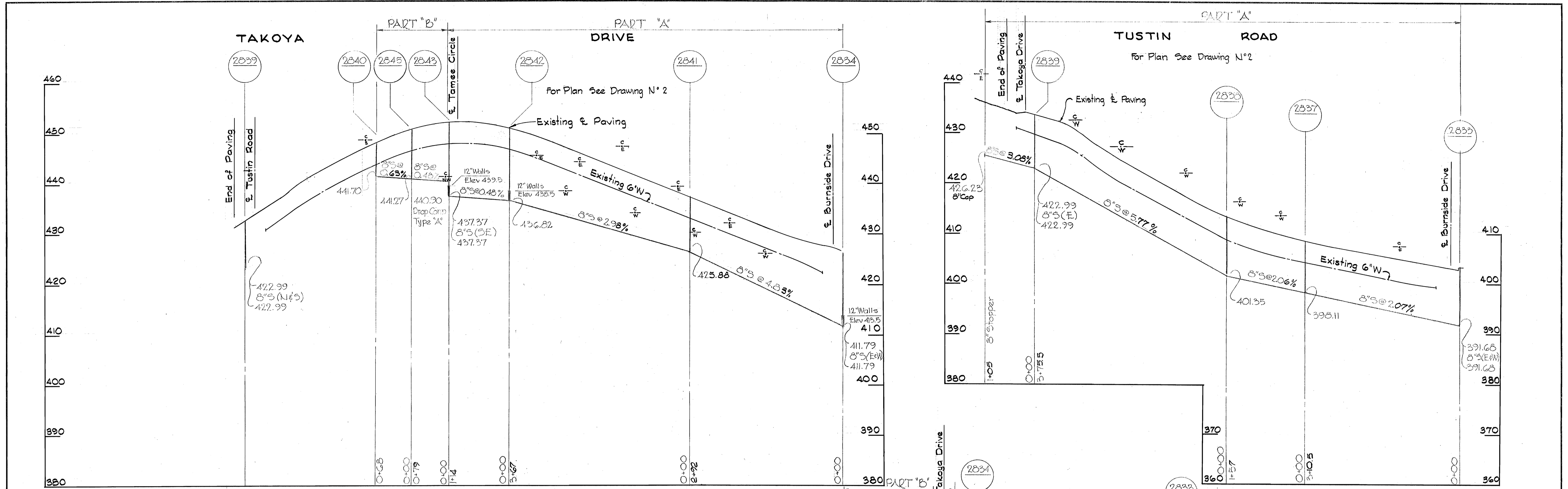
PLAN AND PROFILES OF
SEWER MAINS

CLAYBURN HILLS, PINE ORCHARD, FAIRWAY HILLS
ELECTION DISTRICT - ELLICOTT CITY NO.2

DRAWING NO. 6 OF 8
SCALE AS SHOWN

Nov. 20, 1969 AS BUILT

187-S/6



- Notes:
1. Brick manholes shall have 12" walls as called for on the profiles
 2. "T" for drop house connections is the invert of the special 1/4 bend. (See Standard Detail 3-17)
 3. Payment for Class "C" Concrete low cradle shall be included in the unit price bid for furnishing and laying 8" sewer pipe

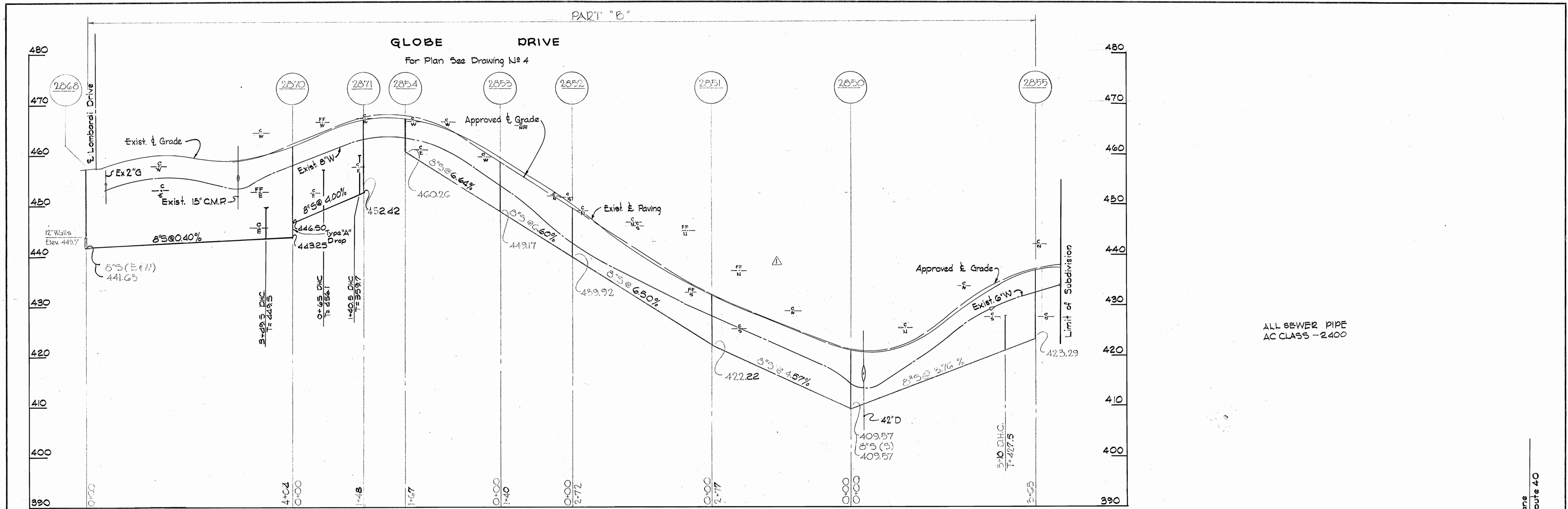
ALL SEWER PIPE - AC CLASS 2400



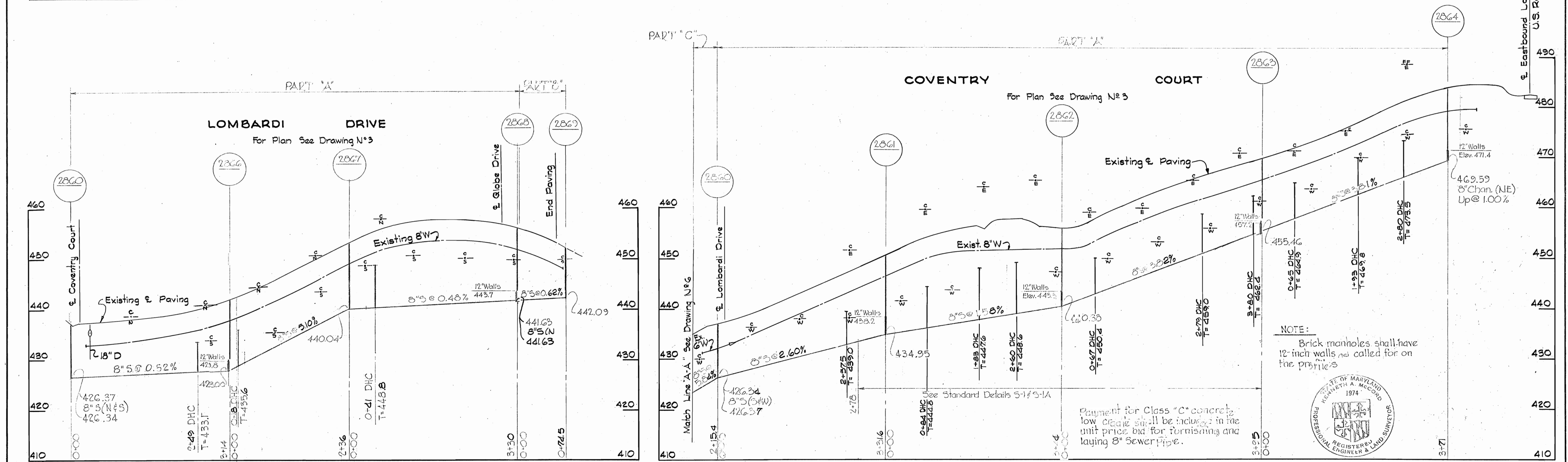
Kenneth M. Lord

WHITMAN, REQUARDT & ASSOCIATES ENGINEERS 1304 ST. PAUL ST. BALTIMORE, MARYLAND	HOWARD COUNTY METROPOLITAN COMMISSION DATE: 6-18-69 W. O. Falbert CHIEF ENGINEER	CONTRACT NO. 187-S	PROFILES OF SEWER MAINS	CLAYBURN HILLS, PINE ORCHARD, FAIRWAY HILLS ELECTION DISTRICT- ELLICOTT CITY NO. 2	DRAWING NO. 7 OF 8 SCALE H: 1"=100' V: 1"=10'
---	---	--------------------	----------------------------	---	---

187-S/7



ALL SEWER PIPE
AC CLASS - 2400



NOTE:
Brick manholes shall have
12-inch walls not called for on
the profiles.

Payment for Class "C" concrete
low grade shall be included in the
unit price bid for furnishing and
laying 8" sewer pipe.



No.	Date	Revision
1	2-3-69	Added Cellar and First Floor elevations to Globe Drive

Kenneth A. McCord

Contract No. 187-S

WHITMAN, REQUARDT & ASSOCIATES ENGINEERS 1304 ST. PAUL ST. BALTIMORE, MARYLAND	HOWARD COUNTY METROPOLITAN COMMISSION DATE: 6-18-68 CHIEF ENGINEER: <i>W O Filbert</i>	CONTRACT NO. 187-S	PROFILES OF SEWER MAINS	CLAYBURN HILLS, PINE ORCHARD, FAIRWAY HILLS ELECTION DISTRICT-ELLCOTT CITY NO. 2	DRAWING NO. 8 OF 8	SCALE H: 1"=100' V: 1"=10'
					Nov. 20, 1969 AS BUILT	

W. O. 5839-2

WS 187-S/8