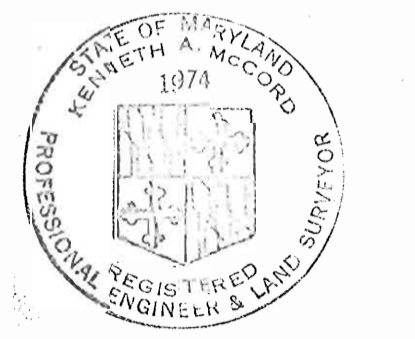


VICINITY MAP
Scale: 1" = 1/2 Mile

GENERAL NOTES

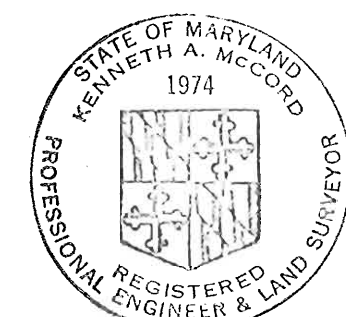
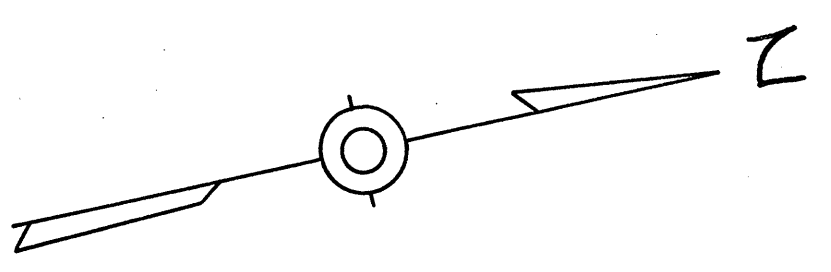
1. Approximate location of existing mains are shown. The Contractor shall take all necessary precautions to protect the existing mains and services and maintain uninterrupted supply. Any damage incurred shall be repaired immediately.
2. All pipe elevations shown are invert elevations.
3. The Contractor shall locate existing utilities a minimum of two weeks in advance of construction operations in vicinity of utilities.
4. For all standard details, see standards bound in Specifications.
5. All sewer mains to be C.S.P.X. or V.C.P.X. sewers or Asbestos Cement Class 2400 unless otherwise noted.
6. Build all MH's to existing ground or paving unless otherwise shown or directed by the Engineer.
7. House connections shall be constructed only where and if directed by the Engineer in the field.
8. Clear all utilities by a minimum of 6", clear all poles by 2'-0" minimum or tunnel as required.
9. The Contractor shall provide a joint in all sewer mains within 2'-0" of exterior manhole walls.
10. Manhole shown with 12" and 16" walls are for brick manholes only.
11. Elevations are based upon Howard County datum.



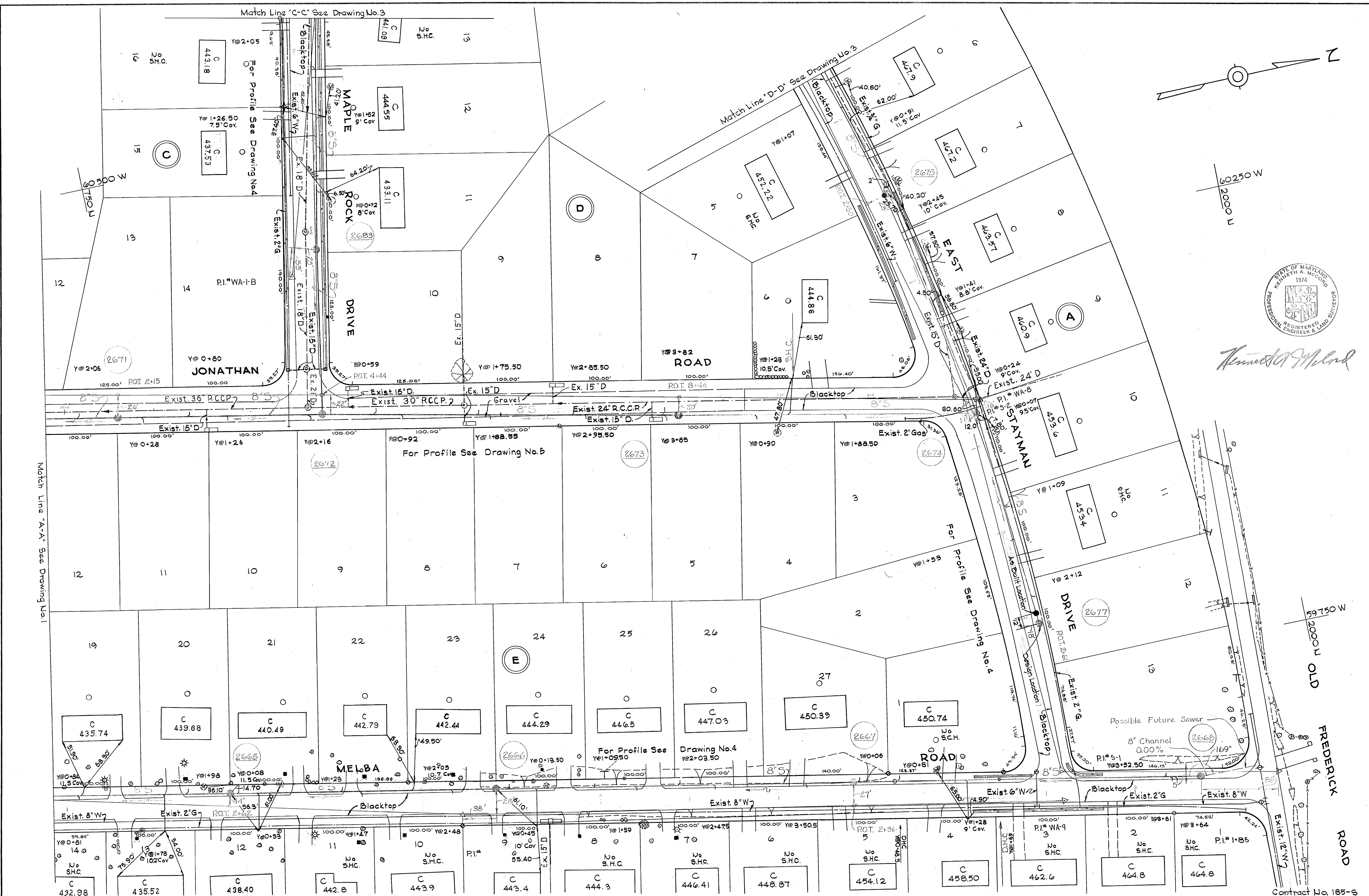
Kenneth A. McCord

WHITMAN, REQUARDT & ASSOCIATES ENGINEERS 1304 ST. PAUL ST. BALTIMORE, MARYLAND	HOWARD COUNTY METROPOLITAN COMMISSION DATE: 5-9-68 W. O. P. Chief Engineer	CONTRACT NO. 185-S	PLAN OF SEWER MAINS	ELLICOTT CITY-WILTON ACRES ADDITION ELECTION DISTRICT-ELLICOTT CITY NO.2	DRAWING NO. 1 OF 5 SCALE 1"=50' Contract No. 185-S
---	--	--------------------	---------------------	---	--

WS 185-S/1



Kenneth A. McCord



Contract No. 185-S

WHITMAN, REQUARDT & ASSOCIATES
ENGINEERS
1304 ST. PAUL ST.
BALTIMORE, MARYLAND

HOWARD COUNTY METROPOLITAN COMMISSION
5-9-68 *ed O'Neil*
DATE CHIEF ENGINEER

CONTRACT NO. 185-S

PLAN OF
SEWER MAINS

ELLCOTT CITY-WILTON ACRES ADDITION
ELECTION DISTRICT - ELLCOTT CITY NO.2

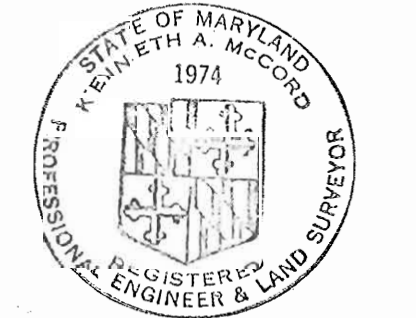
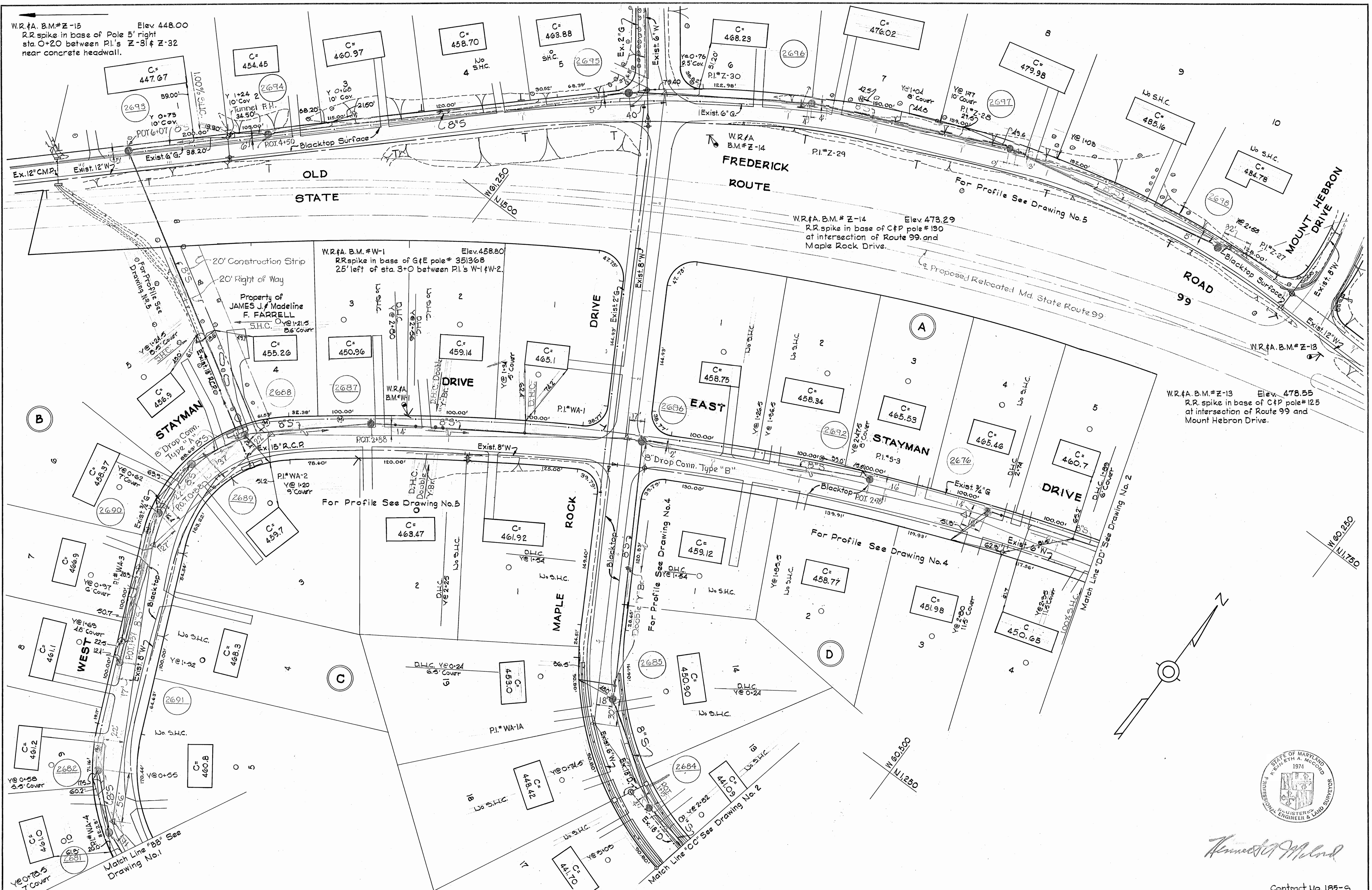
DRAWING NO. 2 OF 5
SCALE 1"=50'

W. O. 5839-2

January 7, 1969

AS BUILT

185-S/2
SM



Kenneth A. McCord

Contract No. 185-S

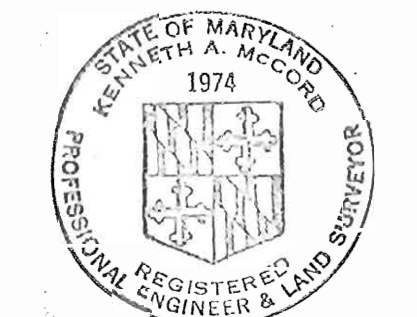
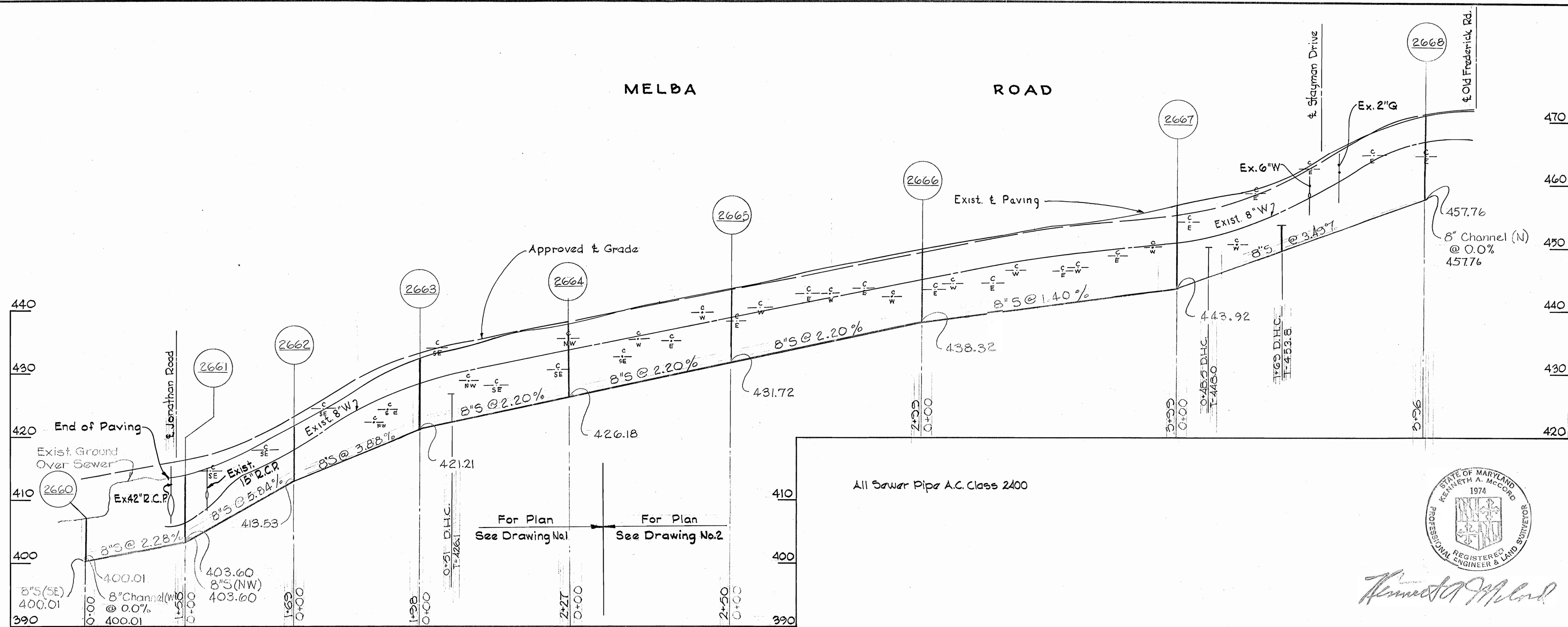
WHITMAN, REQUARDT & ASSOCIATES ENGINEERS 1304 ST. PAUL ST. BALTIMORE, MARYLAND	HOWARD COUNTY METROPOLITAN COMMISSION 5-9-68 <i>W. O. Pickett</i> CHIEF ENGINEER	CONTRACT NO. 185-S	PLAN OF SEWER MAINS	ELLICOTT CITY-WILTON ACRES ADDITION ELECTION DISTRICT-ELLICOTT CITY NO.2	DRAWING NO. 3 OF 5	SCALE 1"=50' AS BUILT
---	---	--------------------	------------------------	---	--------------------------	-----------------------------

W. O. 5839-2

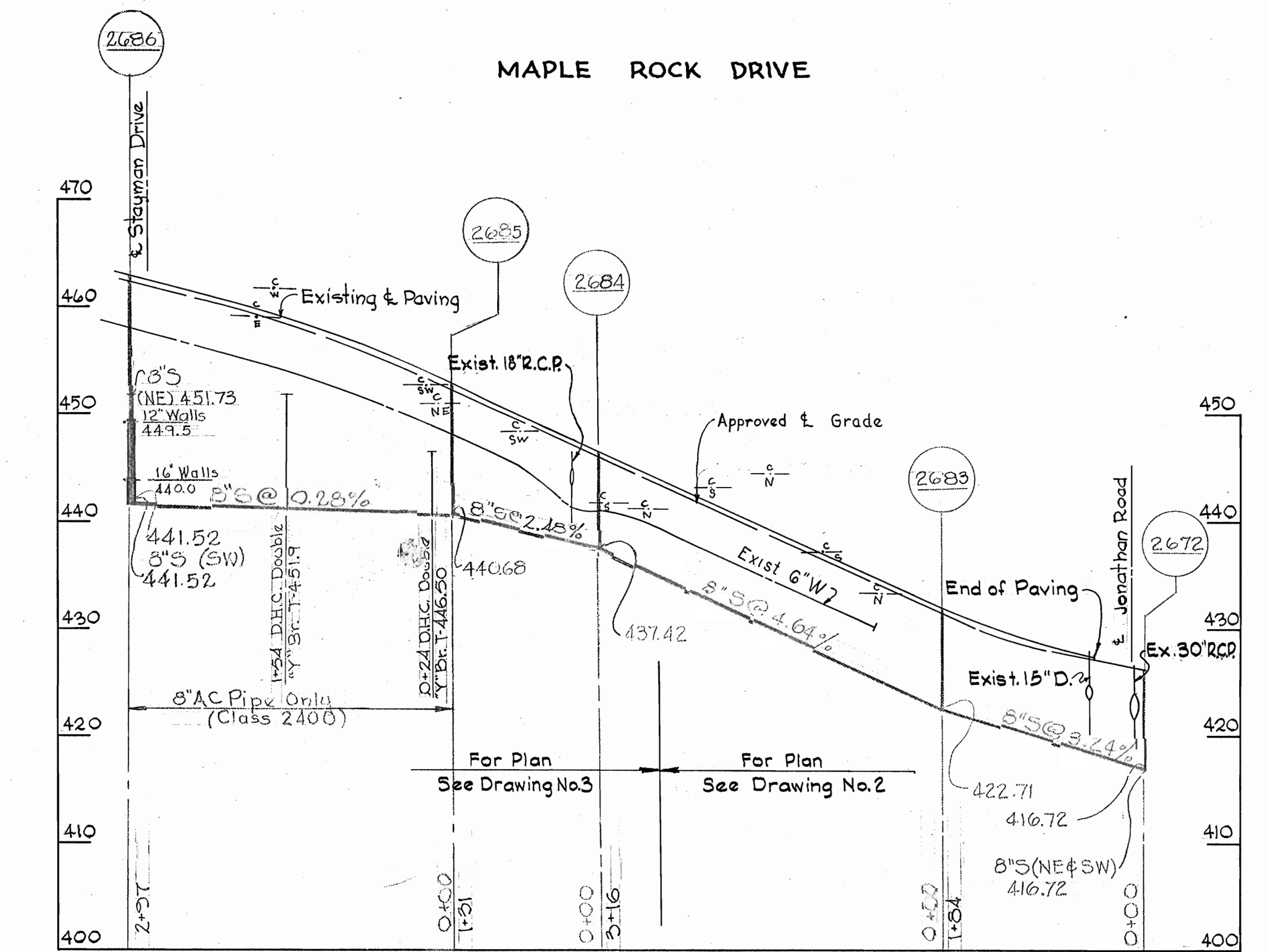
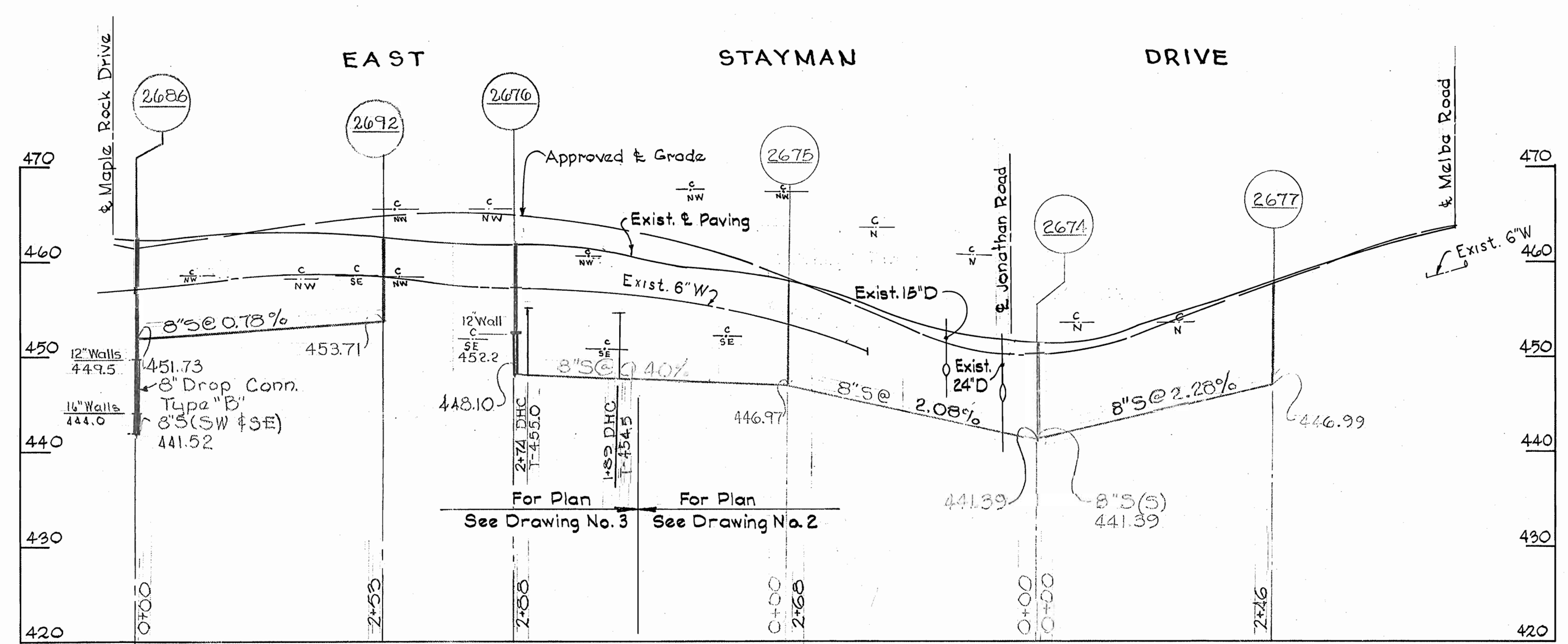
January 7, 1968

F.B. 3013, 3052, 2299.

WS 185-S/3



Kenneth A. McCord



WHITMAN, REQUARDT & ASSOCIATES
ENGINEERS
1304 ST. PAUL ST.
BALTIMORE, MARYLAND

HOWARD COUNTY METROPOLITAN COMMISSION
DATE: 5-8-68
W. O. S. 185-S
CHIEF ENGINEER

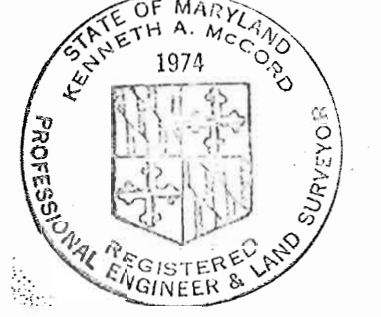
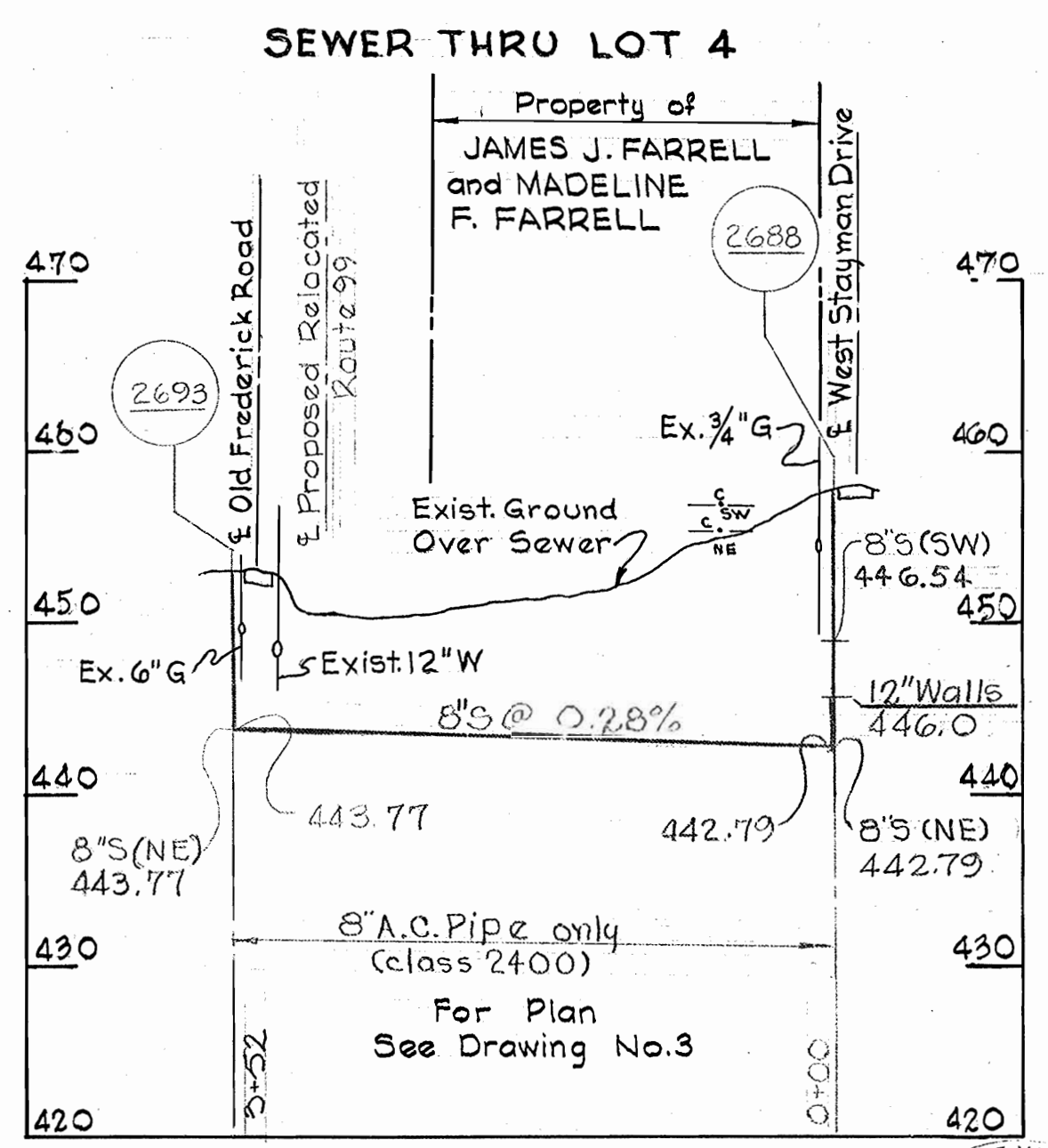
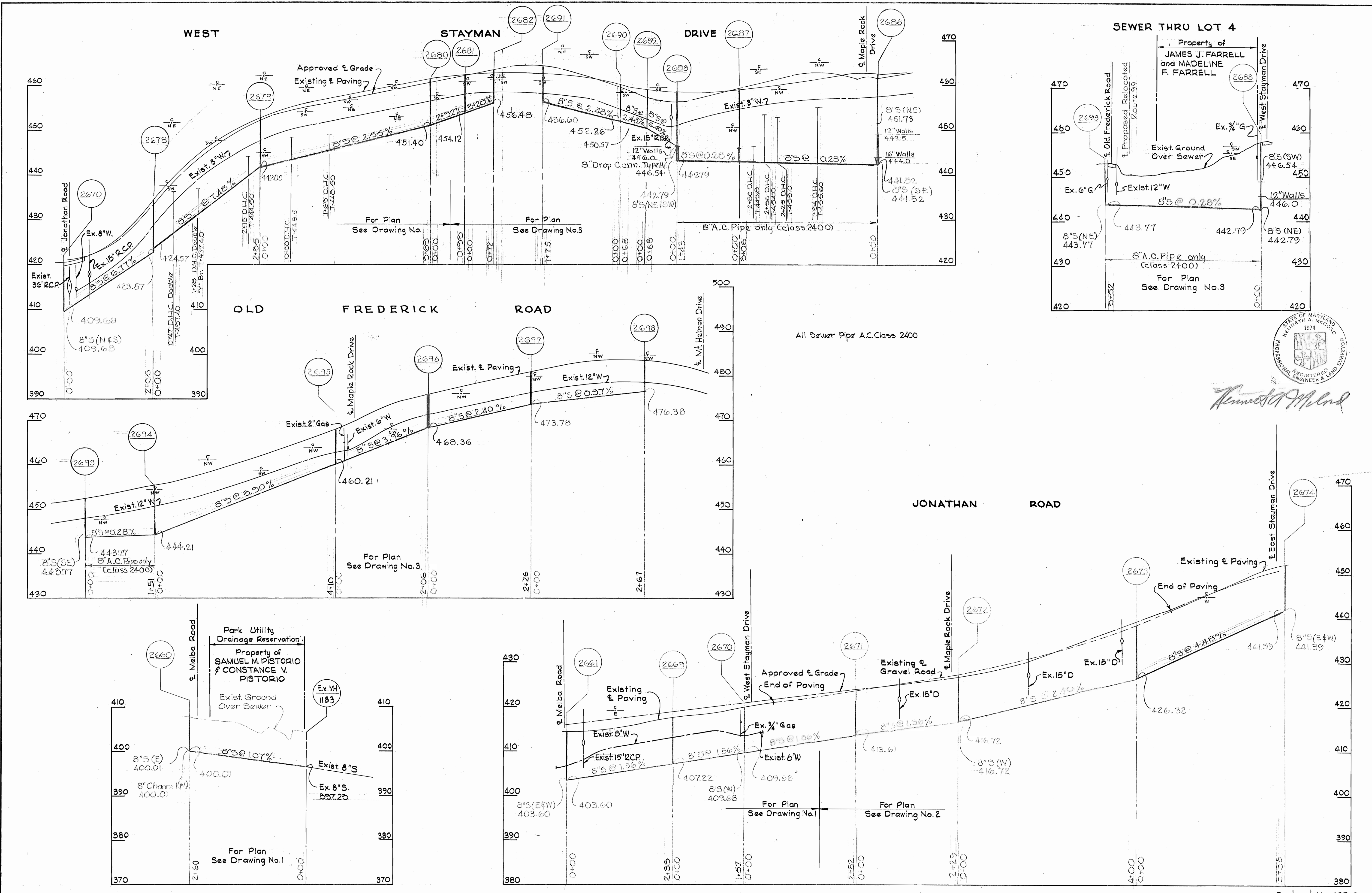
CONTRACT NO. 185-S

PROFILES OF SEWER MAINS

ELLCOTT CITY-WILTON ACRES ADDITION
ELECTION DISTRICT - ELLCOTT CITY NO.2

CONTRACT NO. 185-S
DRAWING NO. 4 OF 5
SCALE: H: 1"=100', V: 1"=10'

WS 185-S/4



Kenneth A. McCord

WHITMAN, REQUARDT & ASSOCIATES ENGINEERS 1304 ST. PAUL ST. BALTIMORE, MARYLAND	HOWARD COUNTY METROPOLITAN COMMISSION 5-9-68 <i>[Signature]</i> CHIEF ENGINEER	CONTRACT NO. 185-S	PROFILES OF SEWER MAINS	ELLICOTT CITY-WILTON ACRES ADDITION ELECTION DISTRICT - ELLICOTT CITY NO.2	DRAWING NO. 5 OF 5 SCALE H:1"=100' V:1"=10'
---	---	--------------------	----------------------------	---	--

W. O. 5839-2

January 7, 1968

AS BUILT

WS 185-S/5