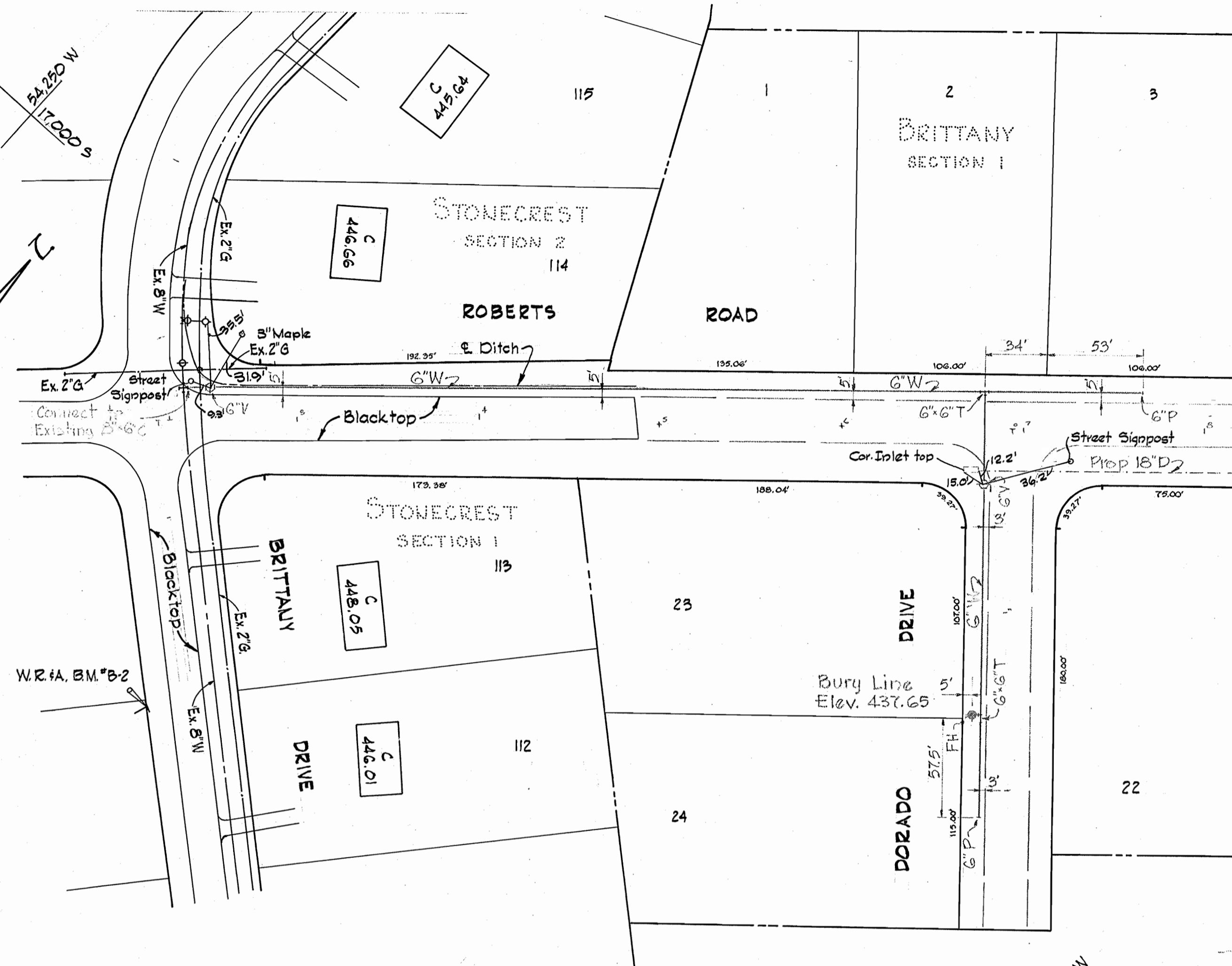
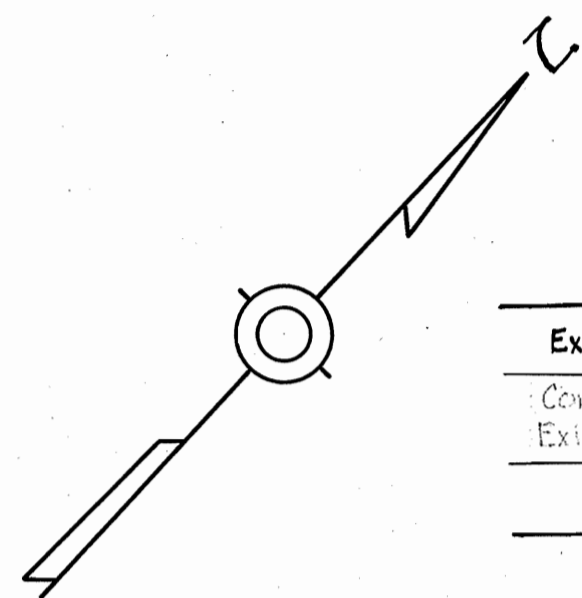


VICINITY MAP  
Scale: 1" = 1/2 mile

W.R.#A, B.M.\*B-1 Elev. 454.19'  
R.R. spike in base of 15' Bench @  
corner of Stonecrest Drive &  
Brittany Drive.

W.R.#A, B.M.\*B-2 Elev. 449.92'  
R.R. spike in base of Power Pole  
#325769 on SW side of Brittany  
Drive, 150' S.E. of Roberts Road.

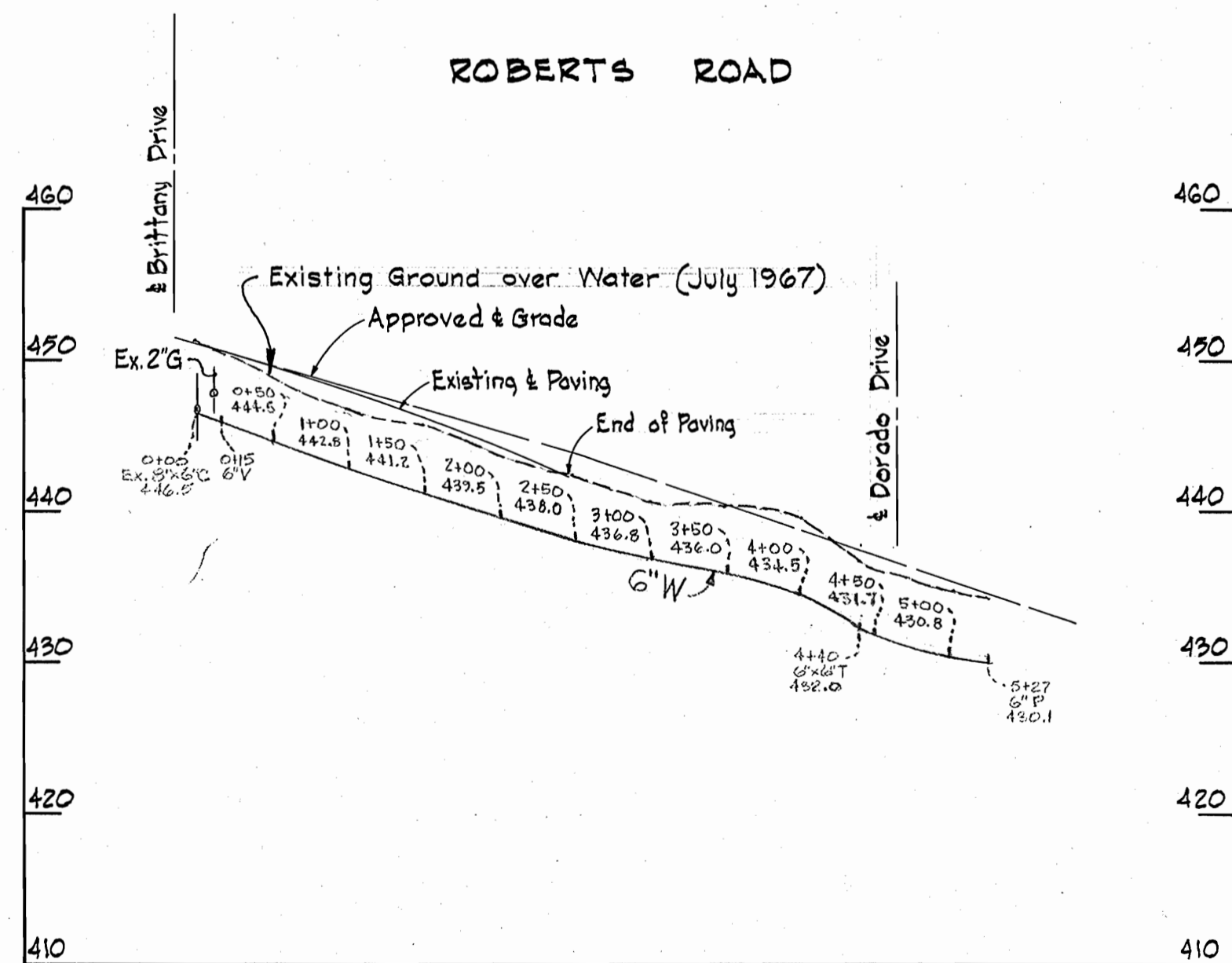


PLAN  
Scale: 1" = 50'

**GENERAL NOTES**

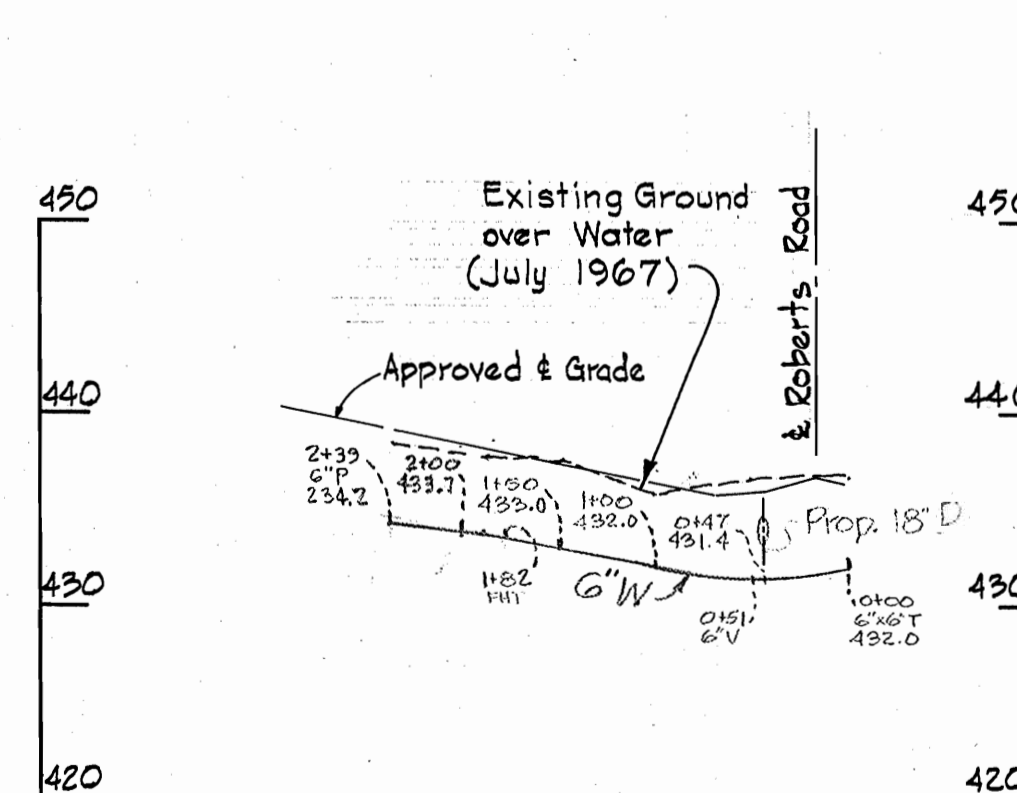
1. Approximate locations of existing mains are shown. The Contractor shall take all necessary precautions to protect existing mains and services and maintain uninterrupted supply. Any damage incurred shall be repaired immediately.
2. All pipe elevations shown are invert elevations.
3. The Contractor shall locate existing utilities a minimum of two weeks in advance of construction operations in vicinity of utilities.
4. For all standard details see standards bound in Specifications.
5. All water mains to be C.I.P. or D.I.P. and have minimum of 3 1/2' cover.
6. Block all fittings with concrete, see standard details bound in Specifications.
7. Bury line elevation on fire hydrants shall be set the same as edge of paving, top of curb, or as directed by the Engineer in the field.
8. All fire hydrants shall be buttressed with concrete in accordance with Standard Detail W-4.
9. Clear all utilities by a minimum of 6'.

**ROBERTS ROAD**

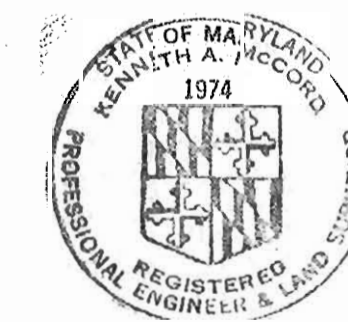


PROFILE  
Scale: Hor. 1" = 100'  
Vert. 1" = 10'

**DORADO DRIVE**



STAKEOUT in F.B.# 3156



*Kenneth A. McLeod*

Brittany Section 1  
Contract No. 183-W

WHITMAN, REQUARDT & ASSOCIATES  
ENGINEERS  
1304 ST. PAUL ST.  
BALTIMORE, MARYLAND

HOWARD COUNTY METROPOLITAN COMMISSION  
DATE: 6.14.67  
W.O. Silbert  
CHIEF ENGINEER

CONTRACT NO. 183-W

PLAN & PROFILES OF  
WATER MAIN EXTENSIONS

ELLCOTT CITY - BRITTANY, STONECREST  
ELECTION DISTRICT - ELLCOTT CITY No. 2

DRAWING  
NO. 1  
OF 1  
SCALE  
AS  
SHOWN

175W36  
185W36 185W37

AS BUILT Nov. 26, 1967 F.B. 3156, 3018

WS 183-W/1