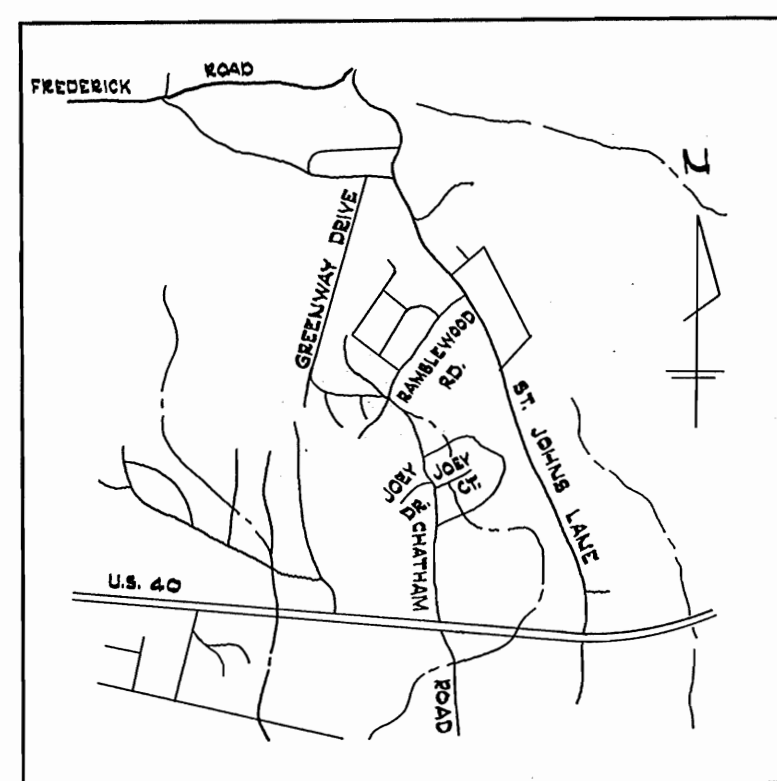
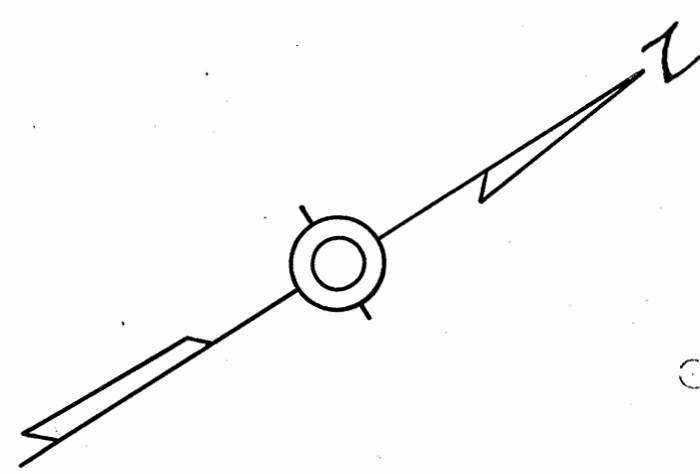
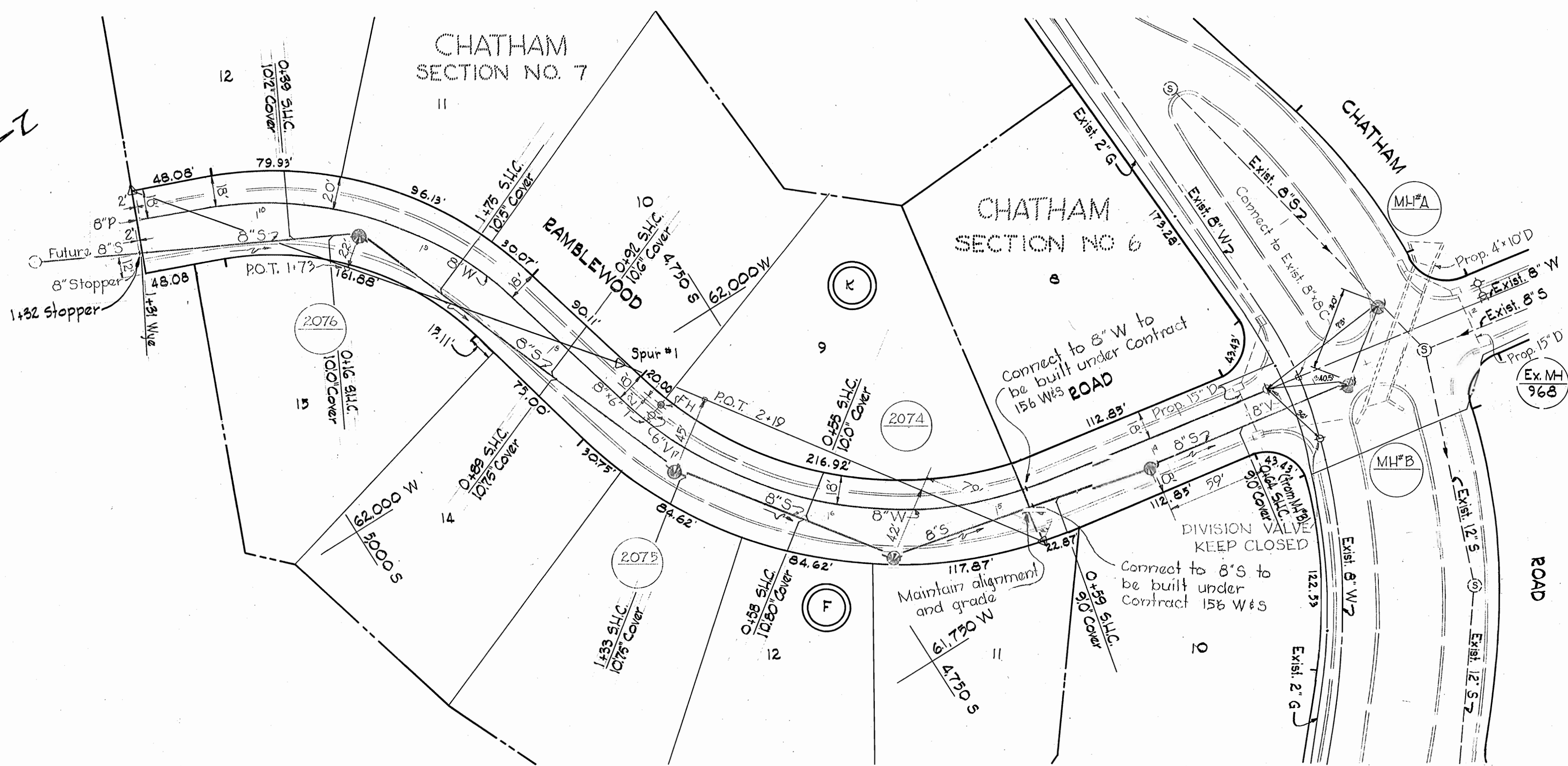


W.P.M. BM * 99A Elev. 416.07
 R.R. spike in base 8" Oak 130"
 N. of inter. of Ramblewood Rd. &
 Ramsey Dr., W. side of Ramblewood
 Rd.



VICINITY MAP
 Scale: 1" = 1/4 mile

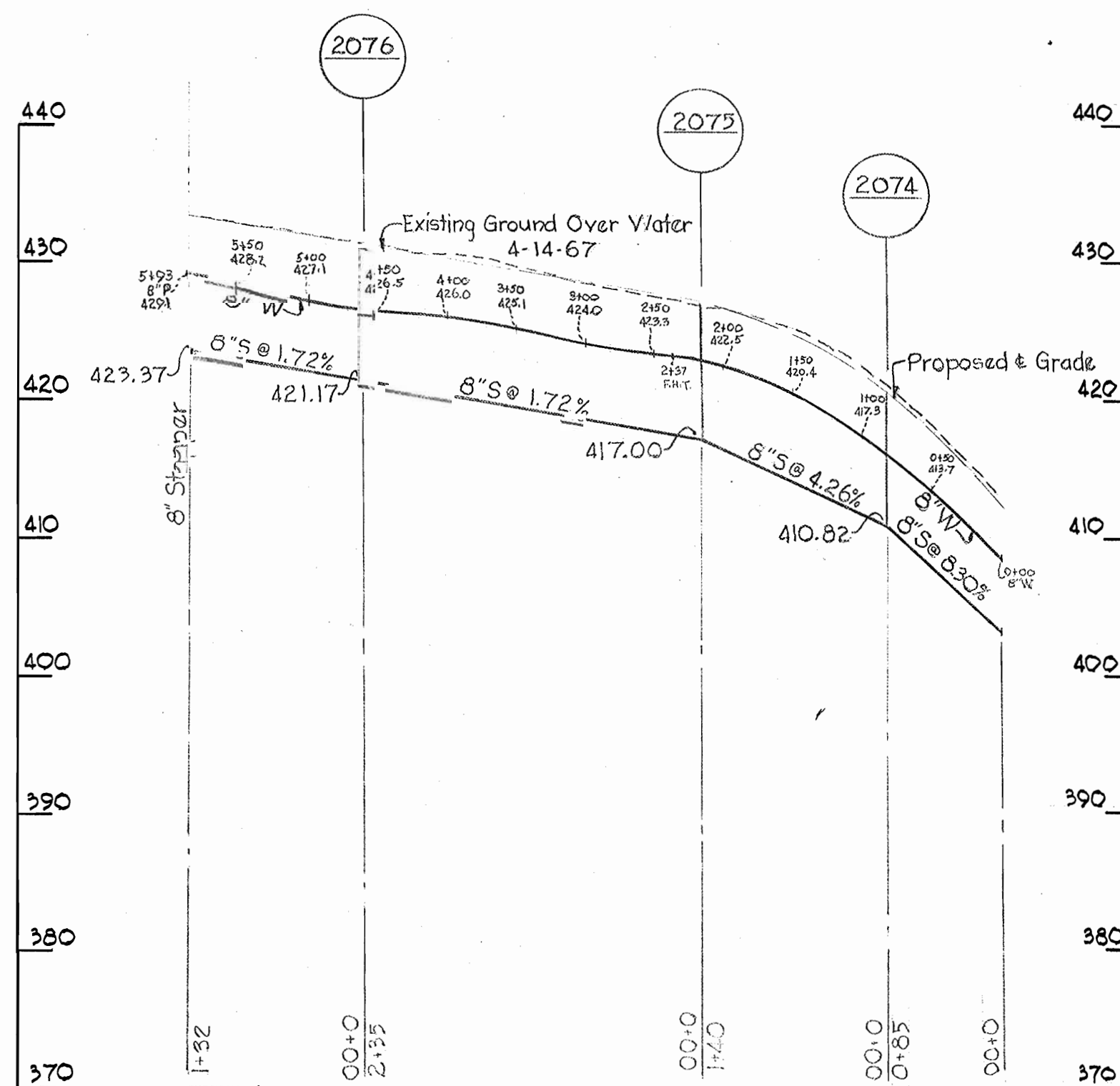


PLAN
 Scale: 1" = 50'

RAMBLEWOOD ROAD

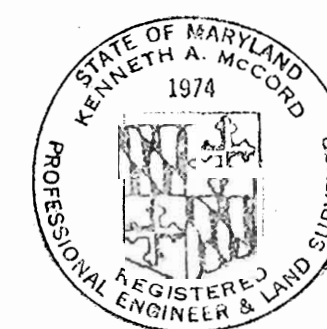
GENERAL NOTES

1. Approximate location of existing mains are shown. The Contractor shall take all necessary precautions to protect existing mains and services and maintain uninterrupted supply. Any damage incurred shall be repaired immediately.
2. All pipe elevations shown are invert elevations.
3. The Contractor shall locate existing utilities a minimum of two weeks in advance of construction operations in vicinity of utilities.
4. For all standard details see standards bound in Specifications.
5. All water mains to C.I.P. or D.I.P. and have a minimum of 3 1/2' cover.
6. Block all fittings with concrete, see standard details bound in Specifications.
7. Bury line elevation on fire hydrants shall be set the same as edge of paving, top of curb, or as directed by the Engineer in the field.
8. All Fire Hydrants shall be buttressed with concrete in accordance with Standard Detail W-4.
9. The Contractor shall provide a joint in all sewer mains within 2'-0" of exterior manhole walls.



PROFILE
 Scale: Hor. 1" = 100'
 Vert. 1" = 10'

QUANTITIES	
ITEM	QUANTITY
8" Water Mains	593'
8" Sewer Mains	592'



Kenneth A. McCord

Chatham Sec. 7
 Contract No. 182 W&S

WHITMAN, REQUARDT & ASSOCIATES ENGINEERS 1304 ST. PAUL ST. BALTIMORE, MARYLAND	HOWARD COUNTY METROPOLITAN COMMISSION DATE _____ CHAIRMAN	CONTRACT NO. 182-W&S	PLAN AND PROFILE OF WATER AND SEWER MAINS	ELECTION DISTRICT ELLCOTT CITY NO.2	DRAWING NO. 11 OF 11	SCALE AS SHOWN
---	---	----------------------	--	--	-------------------------	----------------