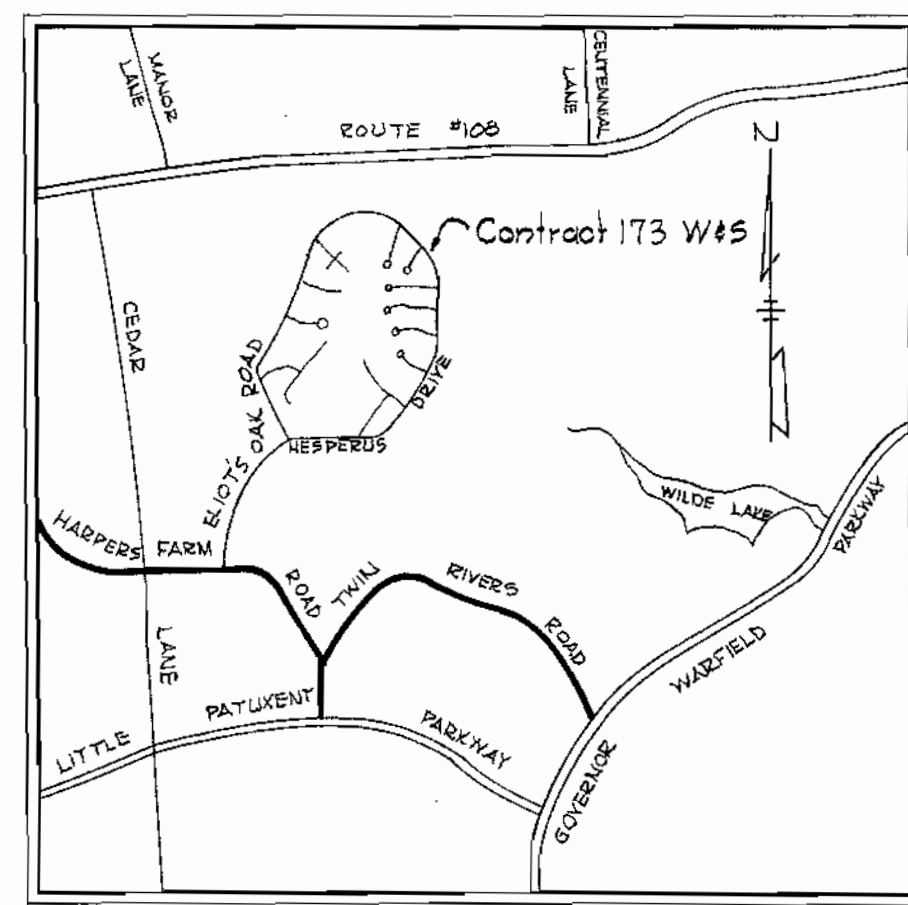


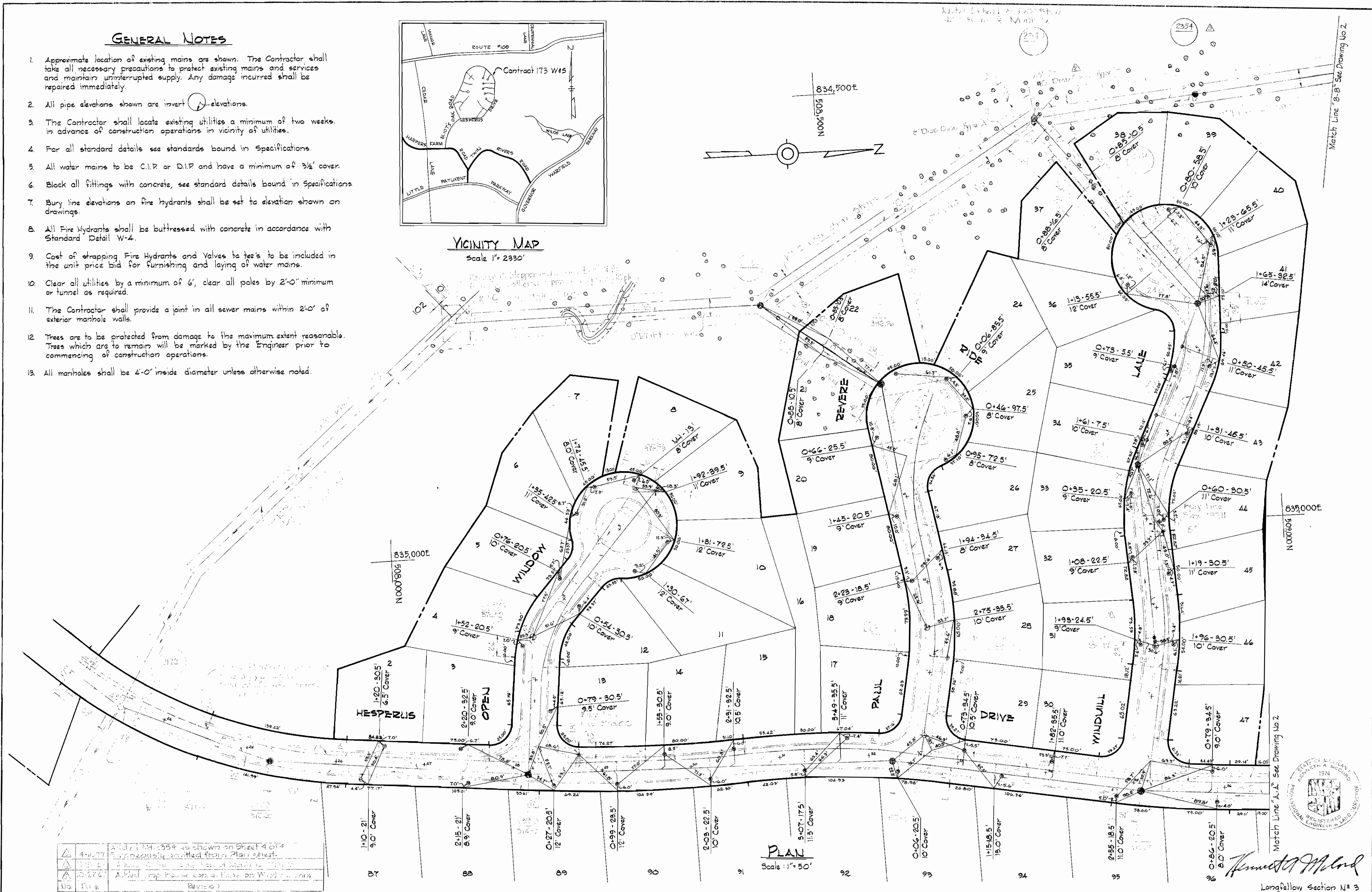
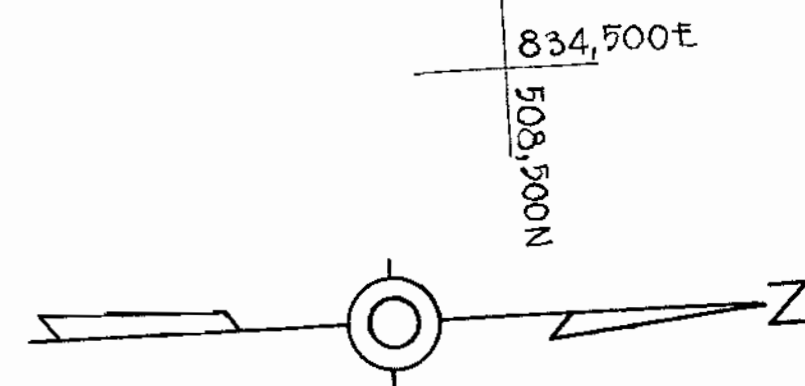
GENERAL NOTES

1. Approximate location of existing mains are shown. The Contractor shall take all necessary precautions to protect existing mains and services and maintain uninterrupted supply. Any damage incurred shall be repaired immediately.
2. All pipe elevations shown are invert elevations.
3. The Contractor shall locate existing utilities a minimum of two weeks in advance of construction operations in vicinity of utilities.
4. For all standard details see standards bound in Specifications.
5. All water mains to be C.I.P. or D.I.P. and have a minimum of 3 1/2' cover.
6. Block all fittings with concrete, see standard details bound in Specifications.
7. Bury line elevations on fire hydrants shall be set to elevation shown on drawings.
8. All Fire Hydrants shall be buttressed with concrete in accordance with Standard Detail W-4.
9. Cost of strapping Fire Hydrants and Valves to trees to be included in the unit price bid for furnishing and laying of water mains.
10. Clear all utilities by a minimum of 6', clear all poles by 2'-0" minimum or tunnel as required.
11. The Contractor shall provide a joint in all sewer mains within 2'-0" of exterior manhole walls.
12. Trees are to be protected from damage to the maximum extent reasonable. Trees which are to remain will be marked by the Engineer prior to commencing of construction operations.
13. All manholes shall be 4'-0" inside diameter unless otherwise noted.

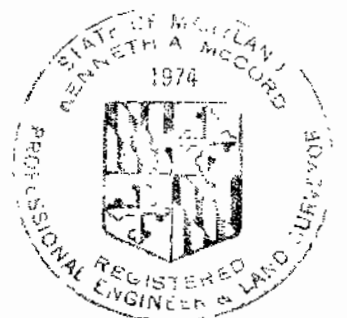


VICINITY MAP

Scale 1" = 2330'



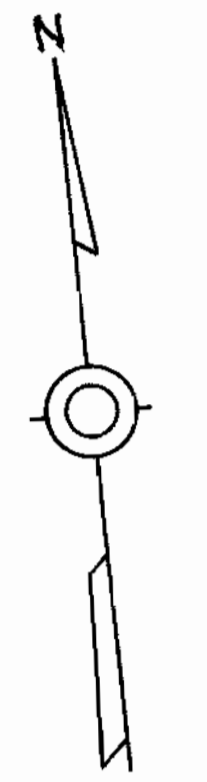
4-11-77	Added 1" M.I. 354 to shown on sheet 4 of 4
5-1-77	Revised to show 1" M.I. 354
5-27-77	Added pipe house connections on Willow
No.	Revised



Howard A. L. ...
 Longfellow Section N# 3
 Contract N# 173 W & S

WHITMAN, REQUARDT & ASSOCIATES ENGINEERS 1304 ST. PAUL ST. BALTIMORE, MARYLAND	HOWARD COUNTY METROPOLITAN COMMISSION DATE: 10-26-67 CHIEF ENGINEER	CONTRACT NO. 173 W & S	PLAN OF WATER & SEWER MAINS	COLUMBIA VILLAGE OF HARPER'S CHOICE ELECTION DISTRICT - CLARKSVILLE No. 5	DRAWING NO. 1 OF 4 SCALE AS SHOWN
--	--	-----------------------------------	--	--	--

WS 173-W&S/2



W.R. & A. B.M. #BD-4 Elev. 411.74'
 R.R. Spike in N. root of 20" Oak, 25'
 E. of E. sta. 0+50 bet. P.I. D-13 & D-14,
 on E. woods, @ end of Durham W. Rd.

BEAVERBROOK SECTION 7



Handwritten signature

Match Line "B-B" See Drawing No. 1

Note:
 2355 to 2342 offset of
 Manhole to clear of storm
 drain Per K. O. Shear 11-1-67
 H.C.'s Adjusted Accordingly.

Match Line "A-A" See Drawing No. 1

Longfellow Section No. 3
 Contract No. 173 W&S

WHITMAN, REQUARDT & ASSOCIATES ENGINEERS 1304 ST. PAUL ST. BALTIMORE, MARYLAND	HOWARD COUNTY METROPOLITAN COMMISSION DATE 10-26-67 CHIEF ENGINEER	CONTRACT NO. 173 W & S	PLAN OF WATER & SEWER MAINS	COLUMBIA VILLAGE OF HARPER'S CHOICE ELECTION DISTRICT - CLARKSVILLE No. 5	DRAWING NO. 2 OF 4 SCALE 1" = 50' 509-478 509-477
---	--	------------------------	--------------------------------	---	--

W. O. 5735-2

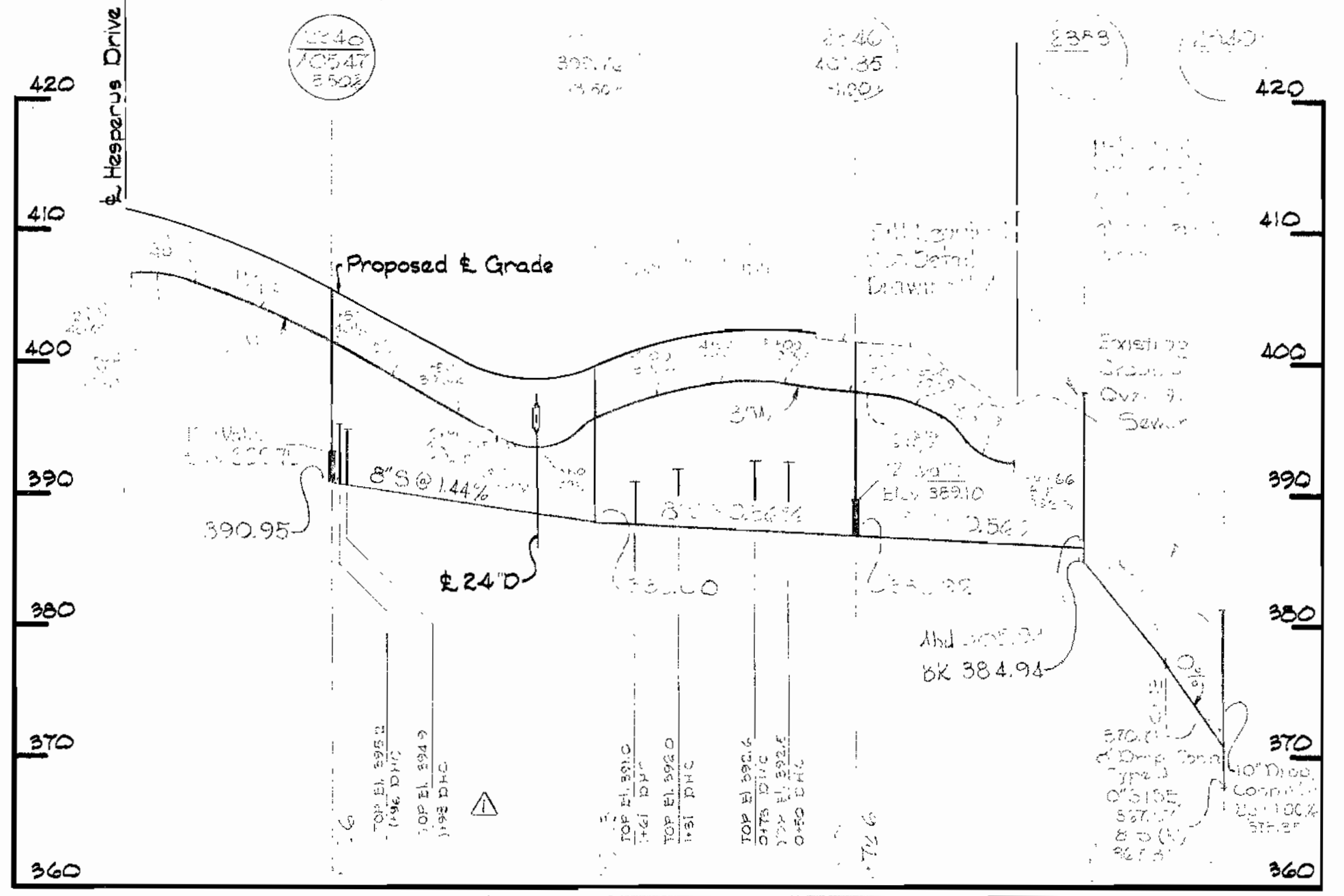
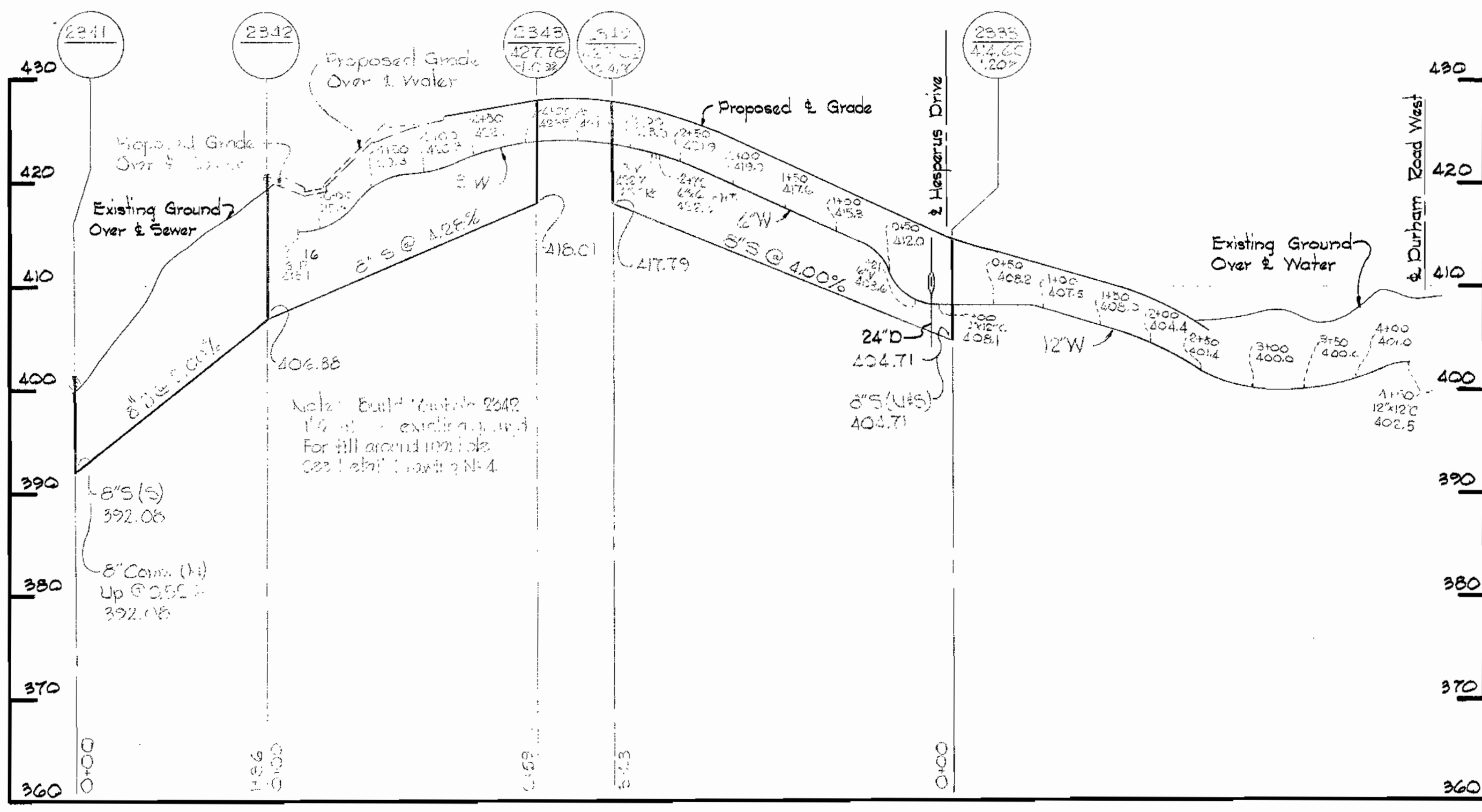
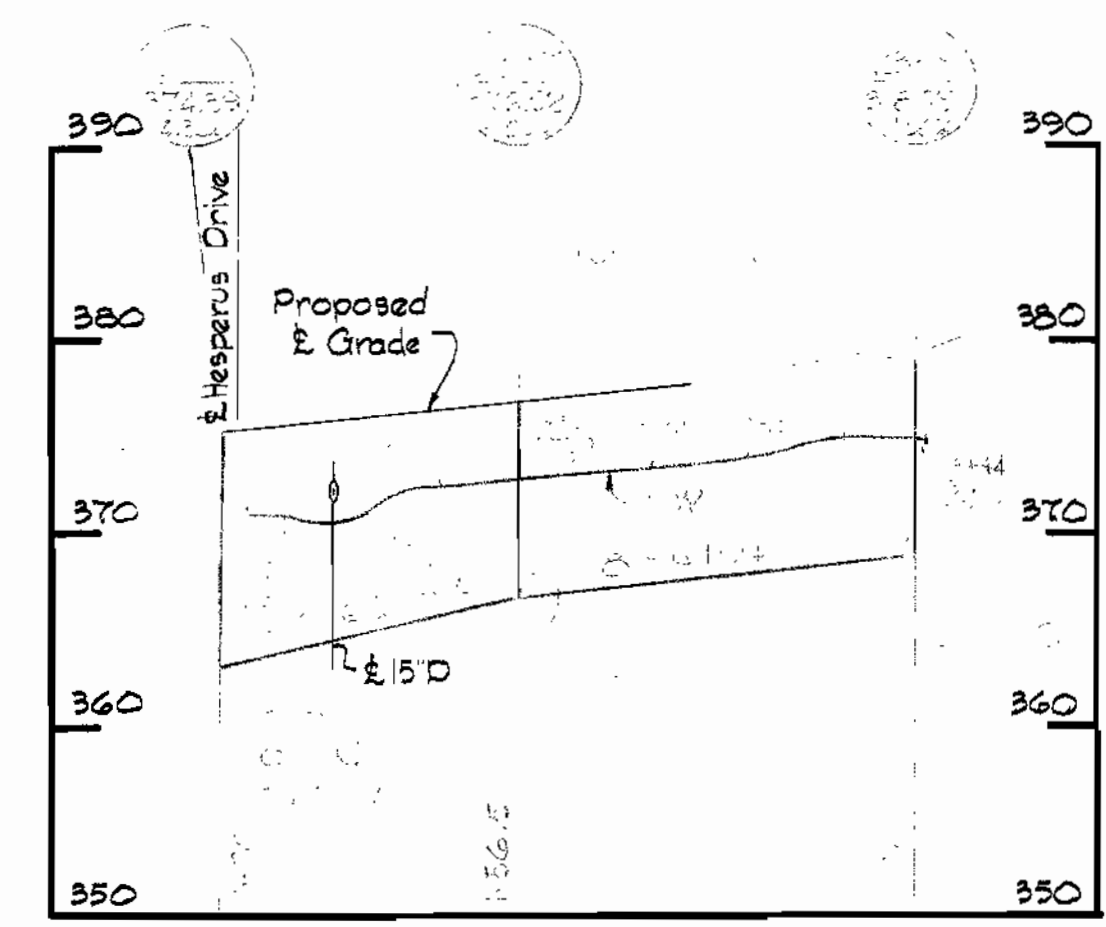
AS BUILT APRIL 25, 1968 FB # 5906, 5976

OPEN WINDOW

PHANTOM COURT

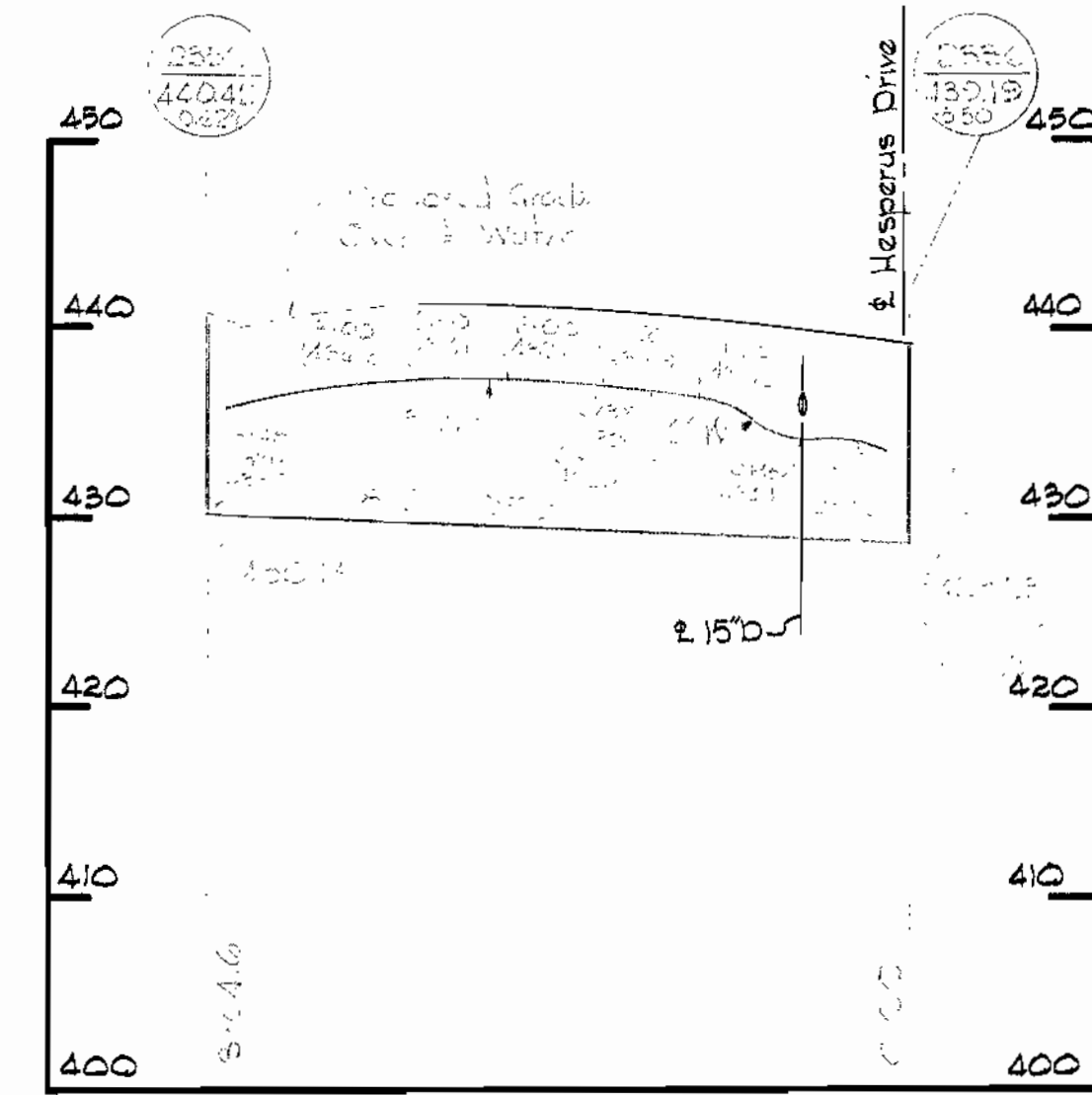
CASTLE MOOR DRIVE

WINDMILL LANE



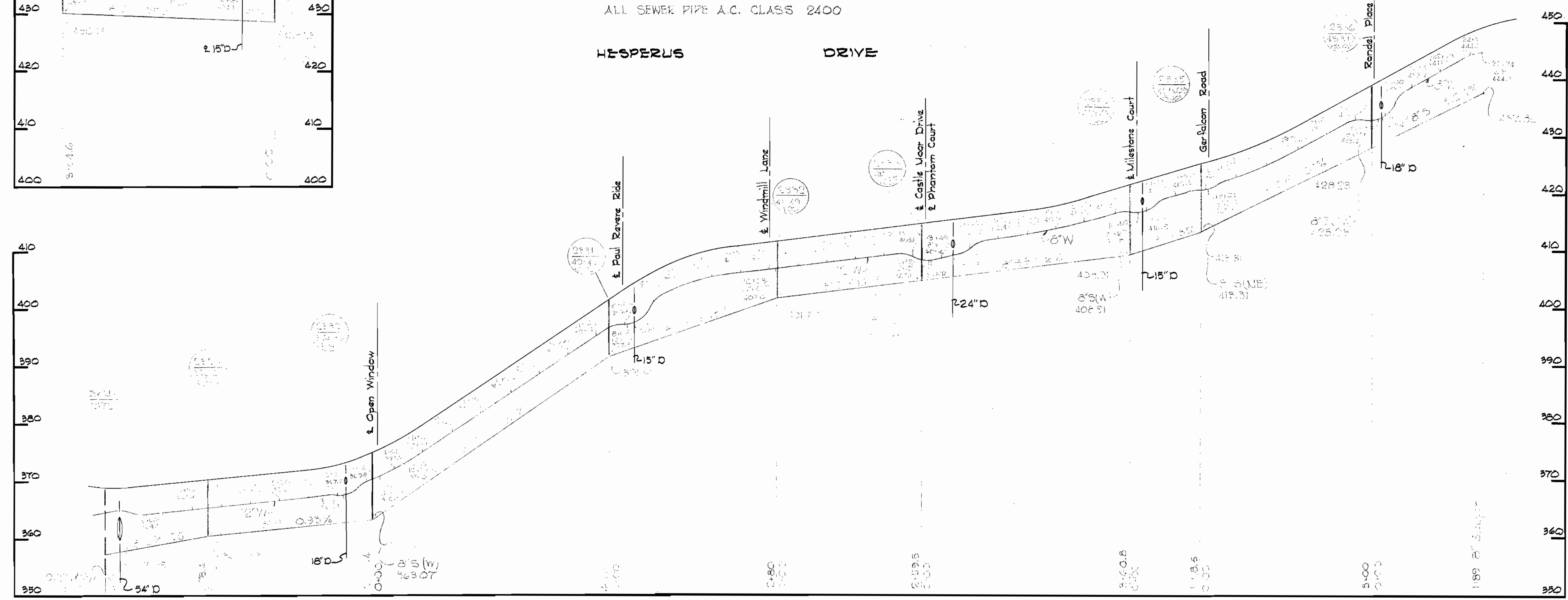
No.	Date	Revision
1	10-26-67	Add drop house connections on Windmill Lane

RONDEL PLACE



ALL SEWER PIPE A.C. CLASS 2400

HESPERUS DRIVE



Kenneth A. McLeod

Longfellow Section N° 3
Contract N° 173 W&S

WHITMAN, REQUARDT & ASSOCIATES
ENGINEERS
1304 ST. PAUL ST.
BALTIMORE, MARYLAND

HOWARD COUNTY METROPOLITAN COMMISSION
10-26-67
DATE
W.D. Mat
CHIEF ENGINEER

CONTRACT NO. 173-W&S

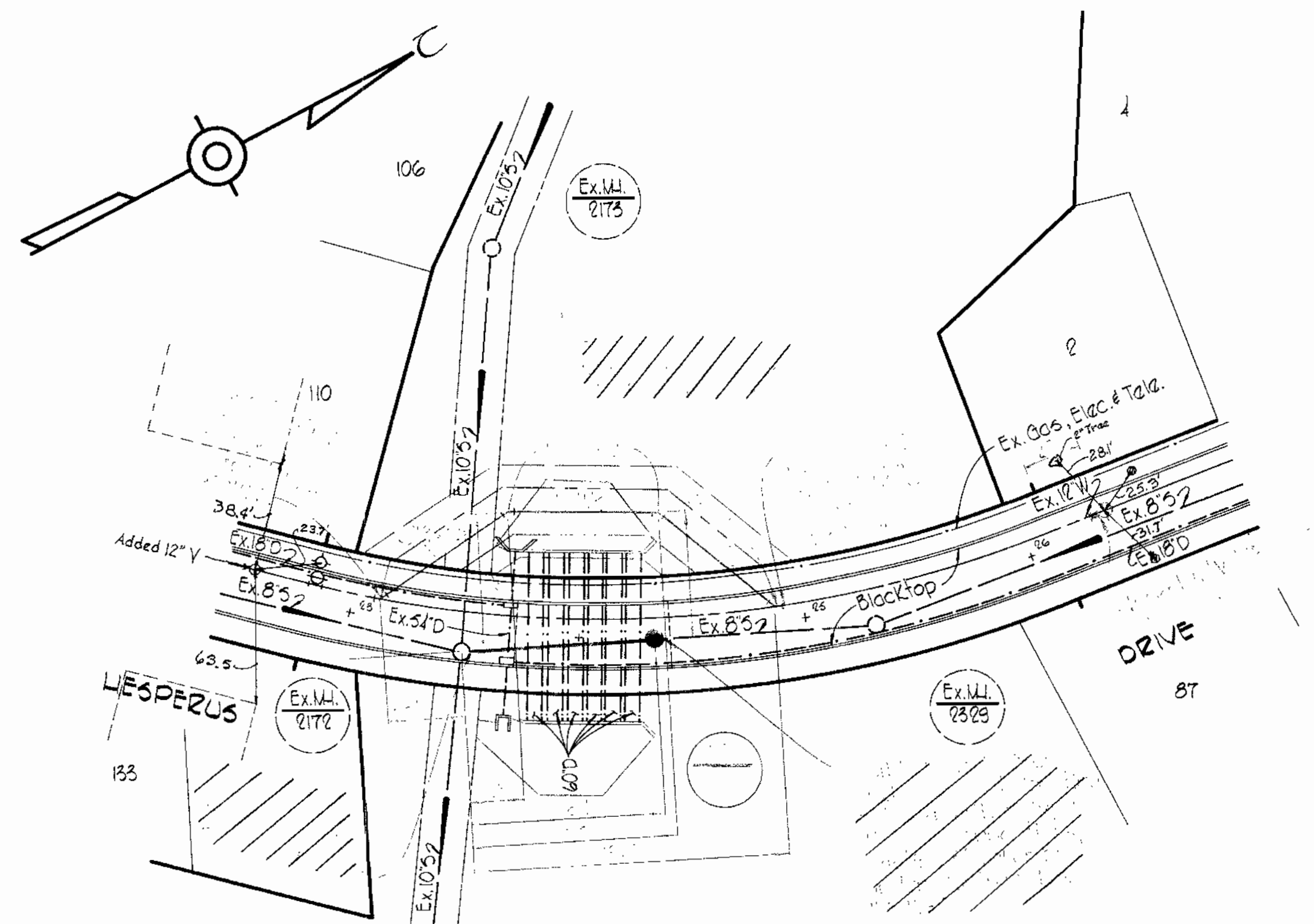
PROFILES OF
WATER & SEWER MAINS

COLUMBIA
VILLAGE OF HARPER'S CHOICE
ELECTION DISTRICT CLARKSVILLE No.5

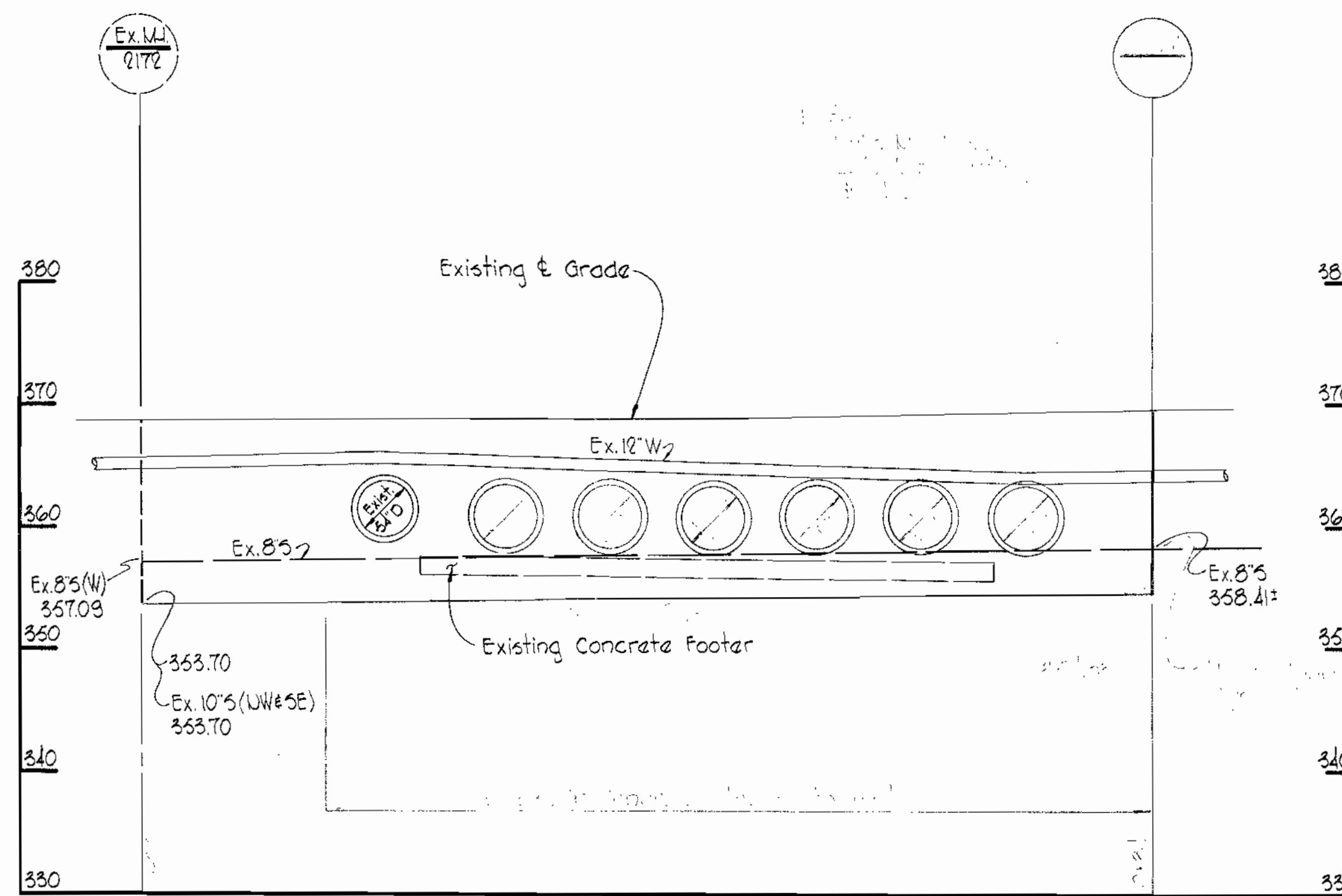
DRAWING
NO. 3
OF 4

SCALE
H:1"=100'
V:1"=10'

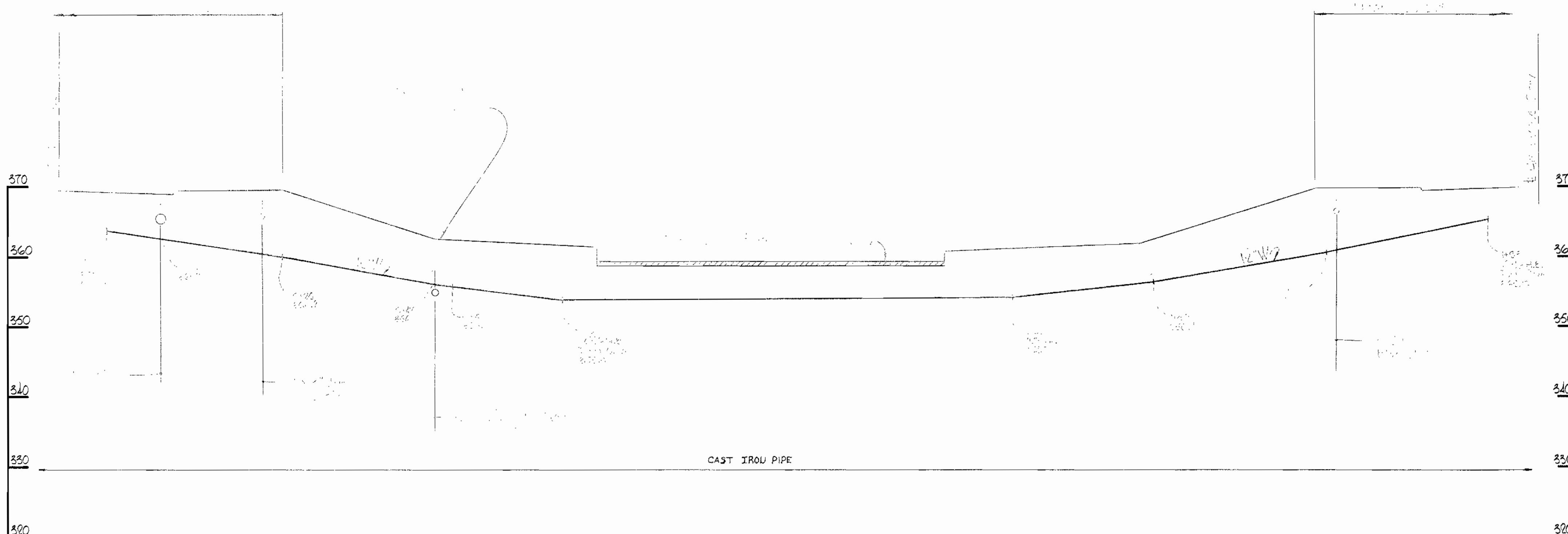
WS 173-W&S/3



PLAN
Scale: 1"=50'



NOTE: SEWER NOT CONSTRUCTED UNDER THIS CONTRACT - WORK WAS DONE BY S.D. CONTR.



PROFILES

Scale: Horz. 1"=10'
Vert. 1"=10'



Kenneth A. McLeod

Stakeout and Dirty in FB #4678

Longfellow
Lesperus Drive W&S Revision
Contract No. 173-A-W&S

WHITMAN, REQUARDT & ASSOCIATES
ENGINEERS
1304 ST. PAUL ST.
BALTIMORE, MARYLAND

HOWARD COUNTY METROPOLITAN COMMISSION
6-17-70 *w.o. Libbut*
DATE CHIEF ENGINEER

CONTRACT NO. 173-A-W&S

PLAN AND PROFILE OF
WATER & SEWER MAINS

COLUMBIA
VILLAGE OF HARPERS CHOICE
ELECTION DISTRICT CLARKSVILLE NO.5

DRAWING NO. 1 OF 1 SCALE AS SHOWN

W. O.

WS 173-A-W&S/1