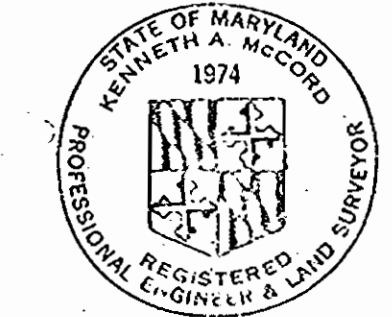


VICINITY MAP
Scale: 1" = 2330'



Kenneth A. McCord

Faulkner Ridge
Contract No. 168 W&S

| | | | | | |
|---|--|----------------------|--------------------------------|---|--|
| WHITMAN, REQUARDT & ASSOCIATES ENGINEERS 1304 ST. PAUL ST. BALTIMORE, MARYLAND | HOWARD COUNTY METROPOLITAN COMMISSION DATE: 6/8/67 <i>W.O. Falbert</i> CHIEF ENGINEER | CONTRACT NO. 168-W&S | PLAN OF WATER & SEWER MAINS | COLUMBIA VILLAGE OF WILDE LAKE ELECTION DISTRICT-CLARKSVILLE No.5 | DRAWING NO. 1 OF 6 SCALE 1" = 50' 506-477 505-477 |
|---|--|----------------------|--------------------------------|---|--|

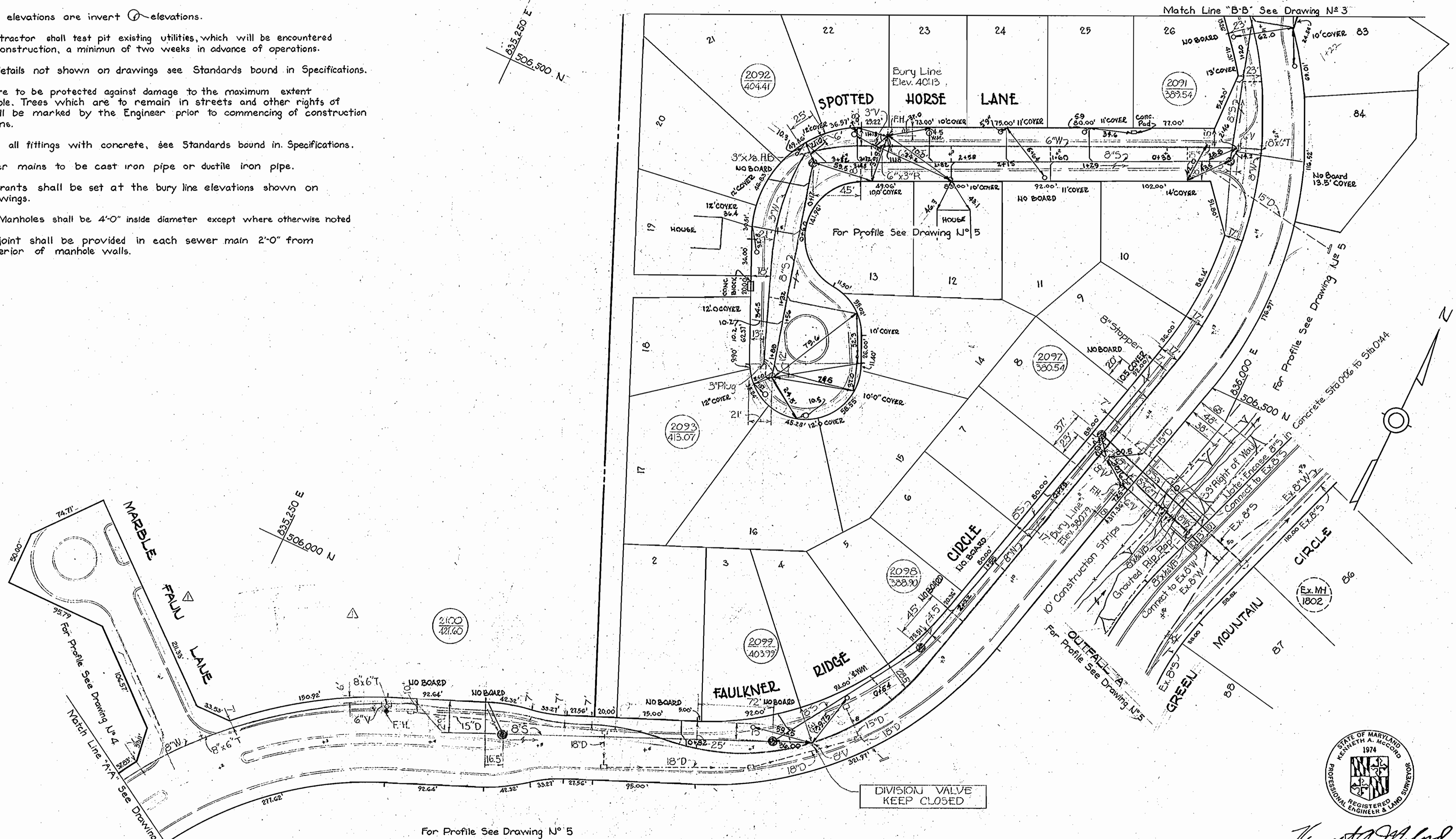
W. O. 5735-2

AS BUILT NOV 20, 1967

WS 168 WS/1 SM

GENERAL NOTES

1. Approximate location of existing utilities are shown. The Contractor shall take all necessary precautions to protect existing utilities and to maintain uninterrupted service. Any damage incurred due to contractor's operations shall be repaired immediately at the Contractor's expense.
2. All pipe elevations are invert (I) elevations.
3. The Contractor shall test pit existing utilities, which will be encountered during construction, a minimum of two weeks in advance of operations.
4. For all details not shown on drawings see Standards bound in Specifications.
5. Trees are to be protected against damage to the maximum extent reasonable. Trees which are to remain in streets and other rights of way will be marked by the Engineer prior to commencing of construction operations.
6. Buttress all fittings with concrete, see Standards bound in Specifications.
7. All water mains to be cast iron pipe or ductile iron pipe.
8. Fire hydrants shall be set at the bury line elevations shown on the drawings.
9. Sewer Manholes shall be 4'-0" inside diameter except where otherwise noted.
10. A pipe joint shall be provided in each sewer main 2'-0" from the exterior of manhole walls.



| Δ | Date | Revisions |
|---|---------|---|
| 1 | 8-24-67 | 6" in Marble Falls Lane eliminated. Manhole 2100 relocated. |



Kenneth A. McCord

Faulkner Ridge
Contract No. 168 W & S

| | | | | | | |
|--|--|-----------------------------------|--|---|-----------------------------------|---------------------------|
| WHITMAN, REQUARDT & ASSOCIATES ENGINEERS 1304 ST. PAUL ST. BALTIMORE, MARYLAND | HOWARD COUNTY METROPOLITAN COMMISSION DATE: 6/16/67 <i>W. O. Peltak</i> CHIEF ENGINEER | CONTRACT NO. 168-W & S | PLAN OF WATER & SEWER MAINS | COLUMBIA VILLAGE OF WILDE LAKE ELECTION DISTRICT-CLARKSVILLE No. 5 | DRAWING NO. 2 OF 6 | SCALE 1" = 50' |
|--|--|-----------------------------------|--|---|-----------------------------------|---------------------------|

W. O. 5735-2

AS BUILT NOV. 20, 1967

WS 168 WS/2

NOTE
 The Contractor shall notify the
 Baltimore Gas & Electric Co 72 hours in
 advance of excavation in the vicinity of
 26" Gas Main by calling:
 Baltimore Gas & Electric Co., Baltimore,
 Maryland 539-8000 Ext. 691

W.R.F.A. B.M.# 9-J Elev. 357.60
 R.R. Spike Root between the Twins of a
 36" Twin Elm ± 40' from P.I.# 5-129-J-23
 at top of Stream bank.

W.R.F.A. B.M.# 9-J

P.I.# 5-129-J-23

48" Maple

15" Walnut

Exist. 15" S-1

Exist. 15" S-1

Exist. 15" S-1

Exist. 15" S-1

Exist. 15" S-1

Exist. 15" S-1

Exist. 15" S-1

Exist. 15" S-1

Exist. 15" S-1

Exist. 15" S-1

Exist. 15" S-1

Exist. 15" S-1

Exist. 15" S-1

Exist. 15" S-1

Exist. 15" S-1

Exist. 15" S-1

Exist. 15" S-1

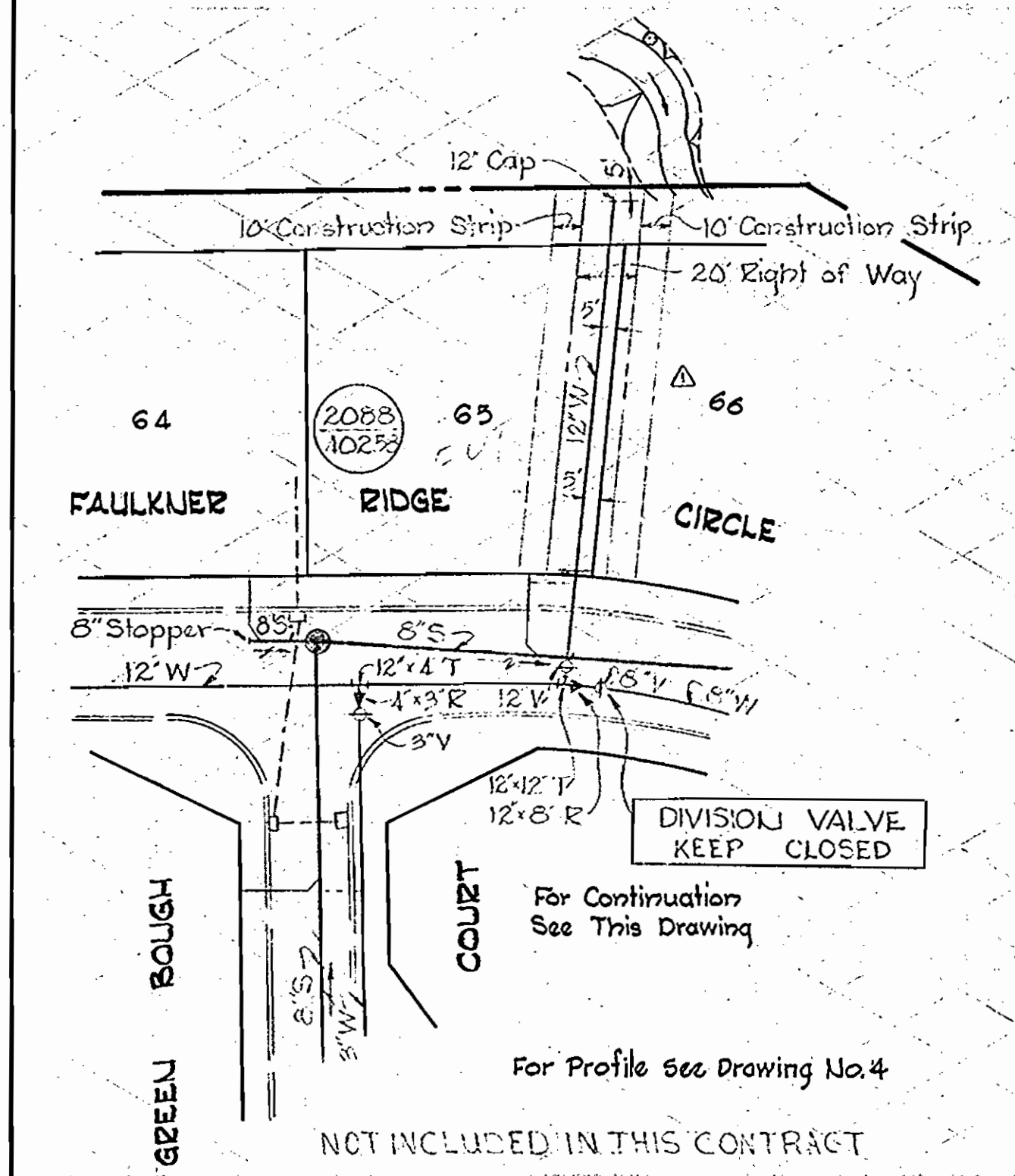
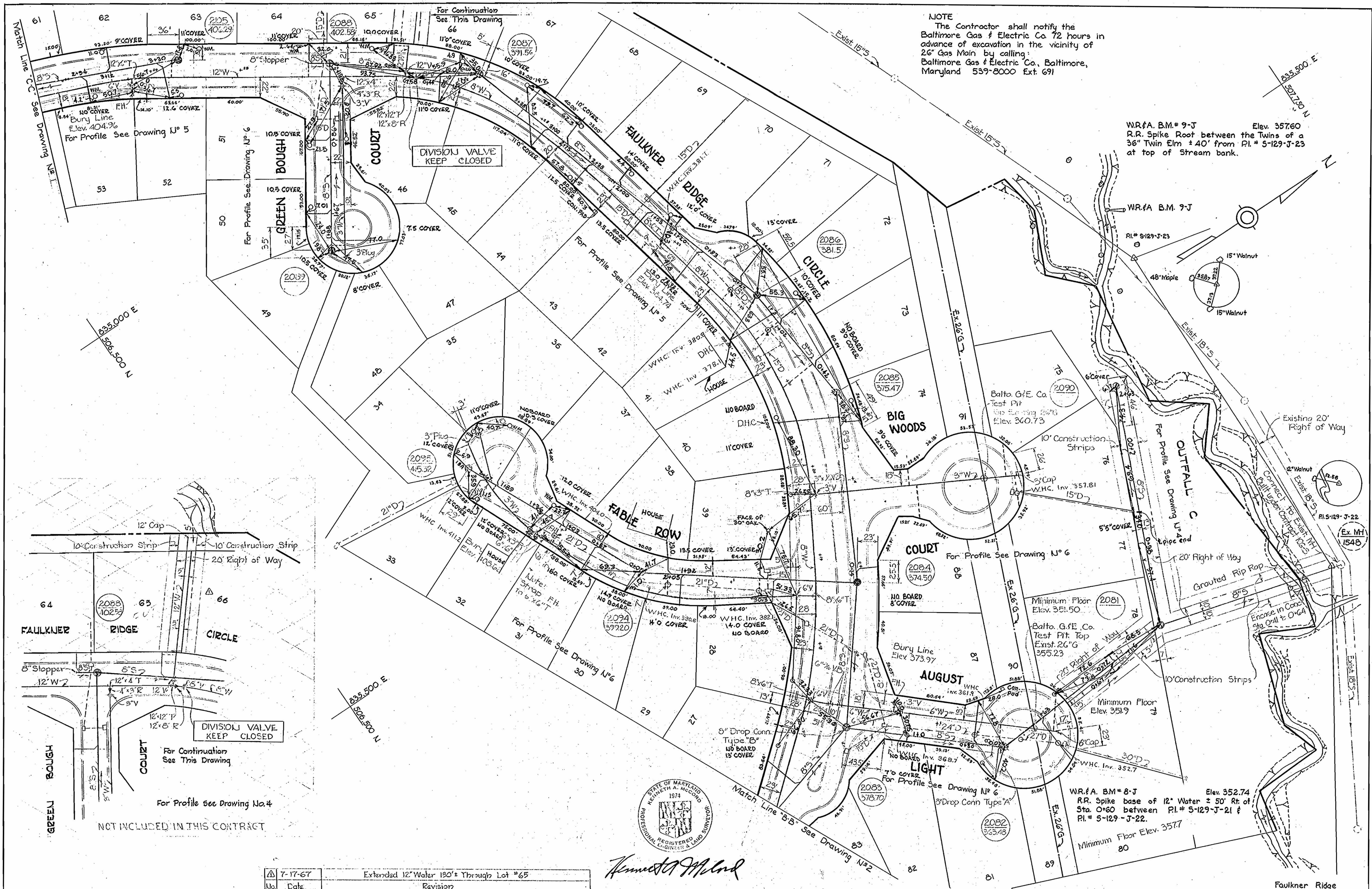
Exist. 15" S-1

Exist. 15" S-1

Exist. 15" S-1

Exist. 15" S-1

Exist. 15" S-1



| | | |
|-----|---------|--|
| No. | Date | Revision |
| 1 | 7-17-67 | Extended 12" Water 130'± Through Lot #65 |

Kenneth A. McCord
 REGISTERED PROFESSIONAL ENGINEER & LAND SURVEYOR
 STATE OF MARYLAND
 KENNETH A. MCCORD
 1974

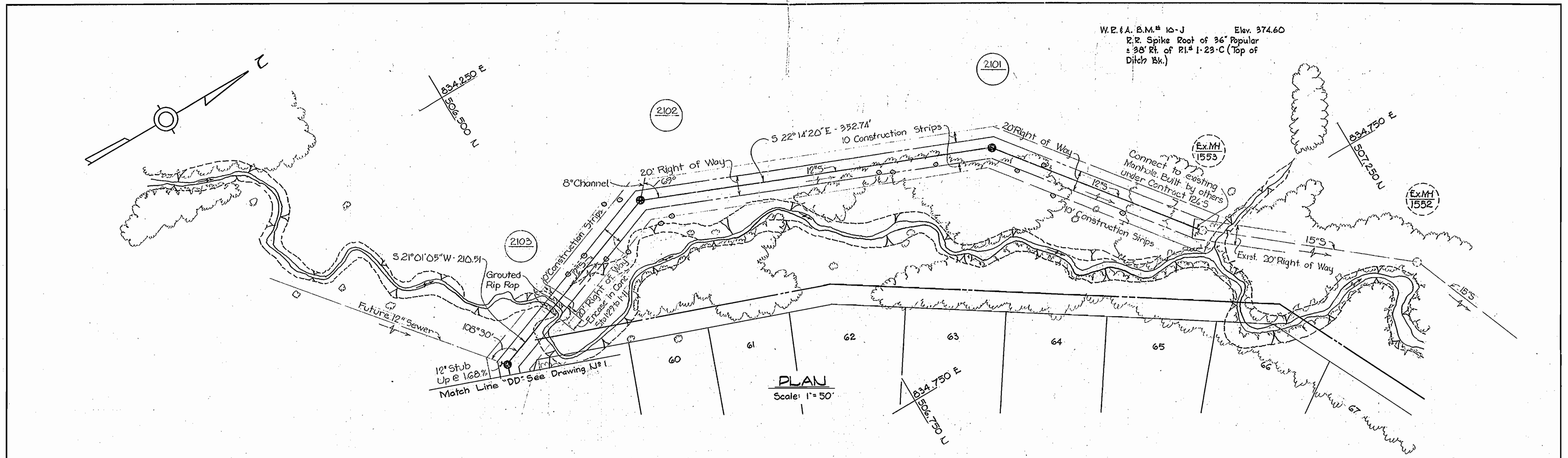
| | | | | | | |
|---|--|---------------------------------|--------------------------------|---|--|--------------------------|
| WHITMAN, REQUARDT & ASSOCIATES ENGINEERS 1304 ST. PAUL ST. BALTIMORE, MARYLAND | HOWARD COUNTY METROPOLITAN COMMISSION DATE <u>6/8/67</u> <i>W O Falbert</i> CHIEF ENGINEER | CONTRACT NO. <u>168-W&S</u> | PLAN OF WATER & SEWER MAINS | COLUMBIA VILLAGE OF WILDE LAKE ELECTION DISTRICT-CLARKSVILLE No.5 | DRAWING NO. <u>3</u> OF <u>6</u> | SCALE <u>1" = 50'</u> |
|---|--|---------------------------------|--------------------------------|---|--|--------------------------|

WS 168 WS/3

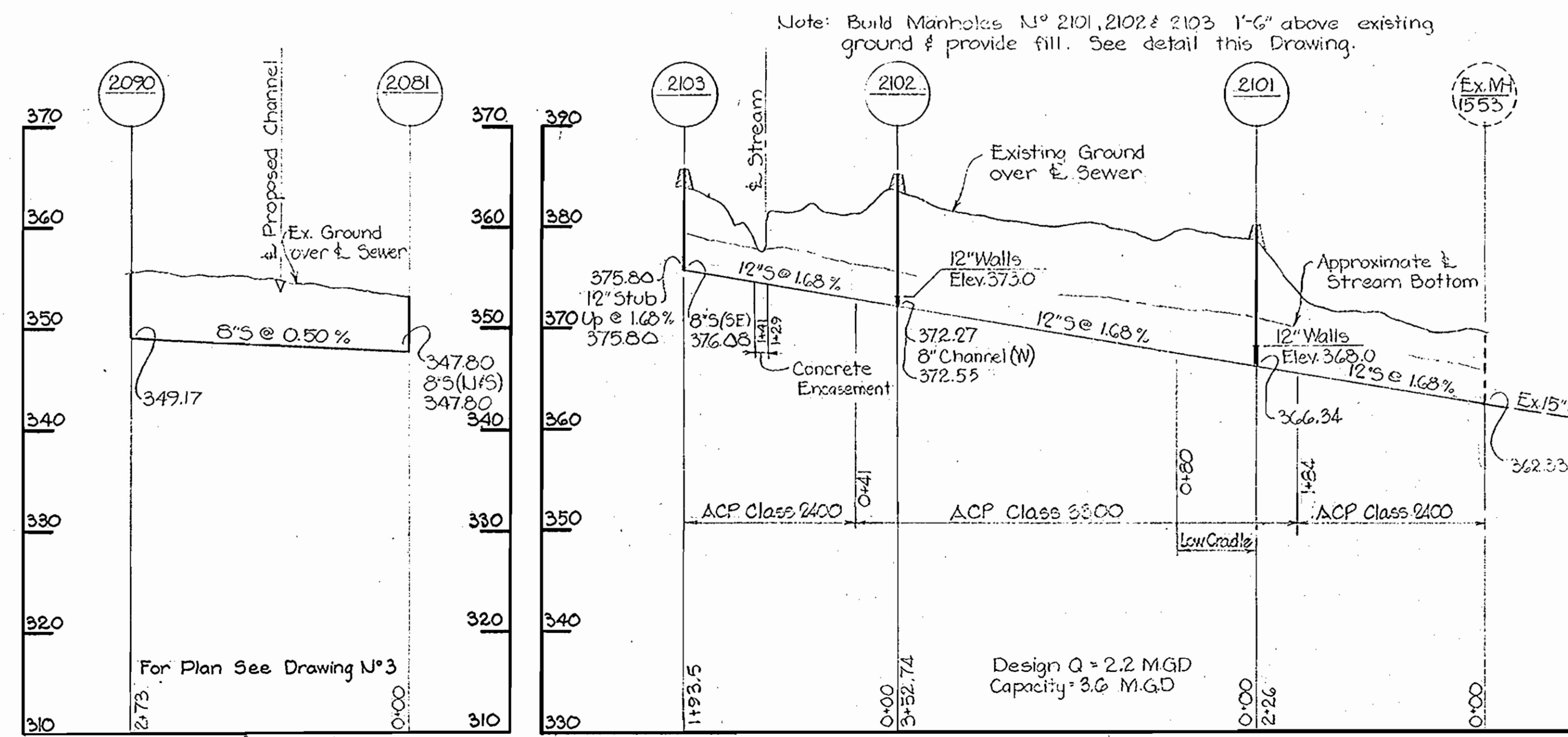
5/25/67

5/25/67

5/25/67

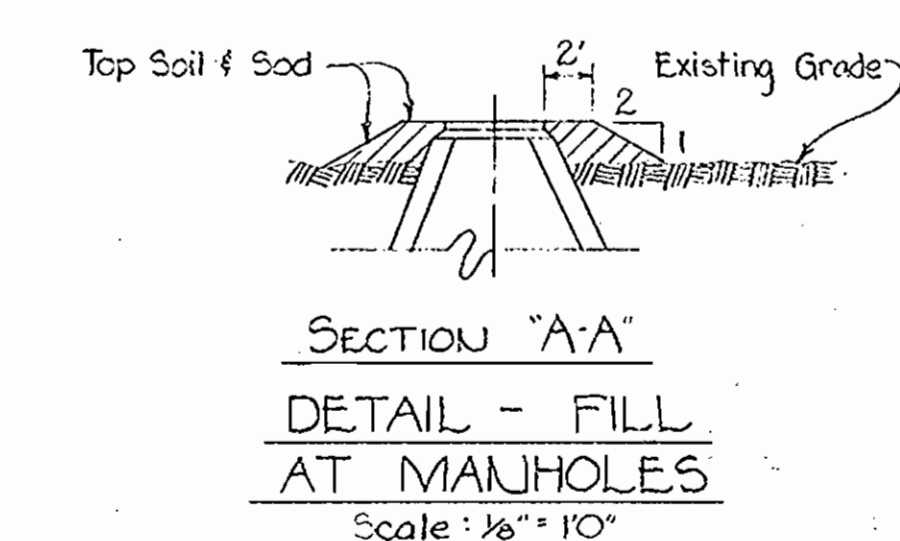
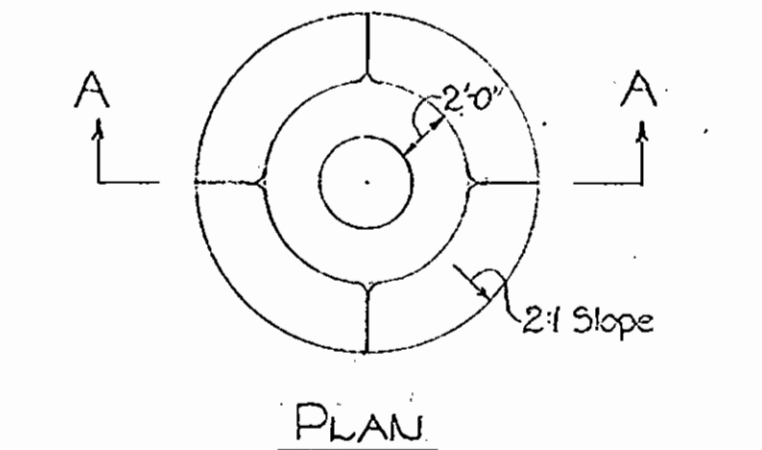
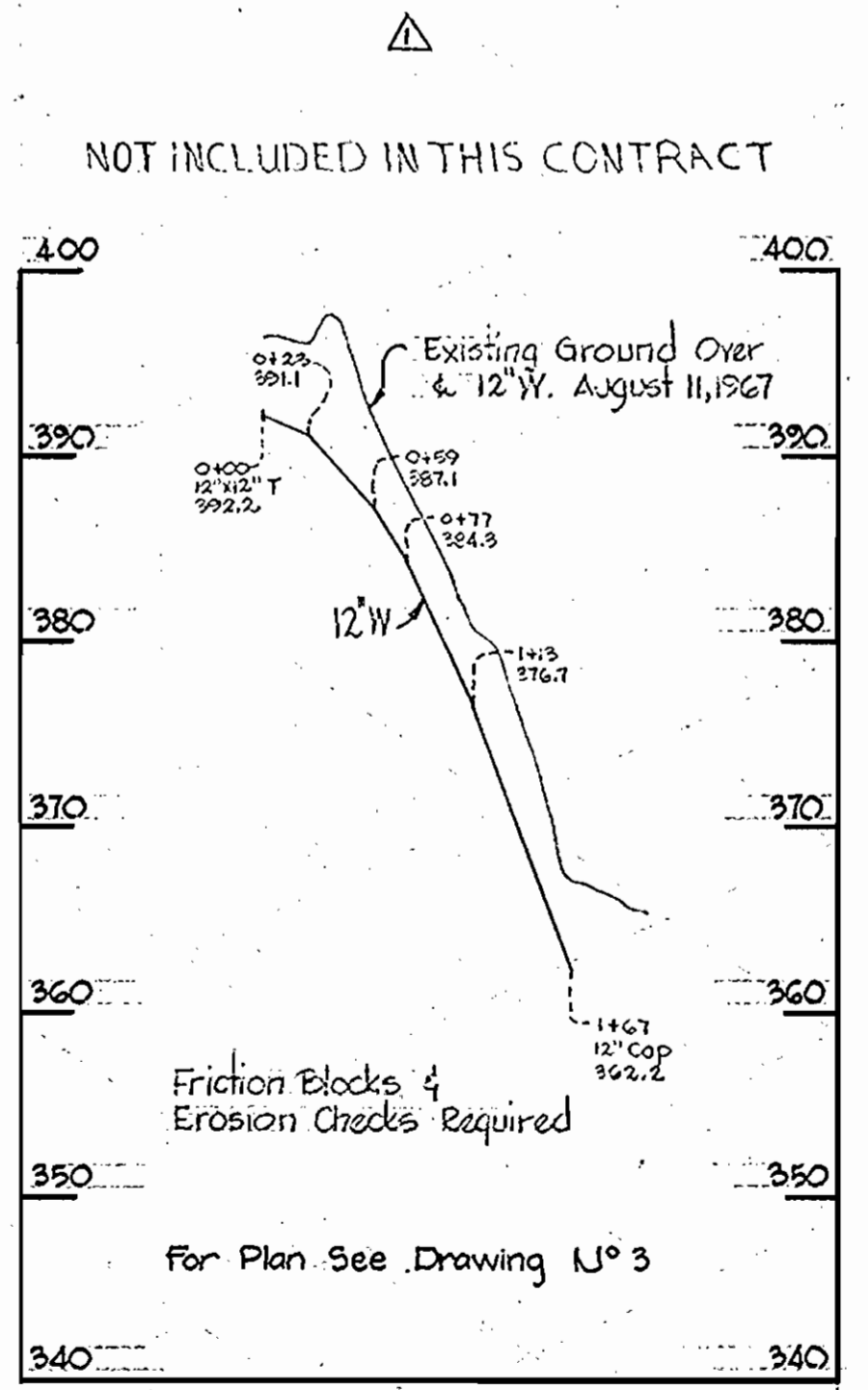


OUTFALL C



PROFILE Scale: H=1"=100' V=1"=10'

12" W. IN LOT NO. 65



Kenneth A. McCord

| | |
|----------------------|---|
| 9-12-67 | Replaced Marble foun Lane with profile of 12" W. in Lot N ^o 65 |
| U ^o Date: | Revision |

Faulkner Ridge Contract U^o 168 W&S

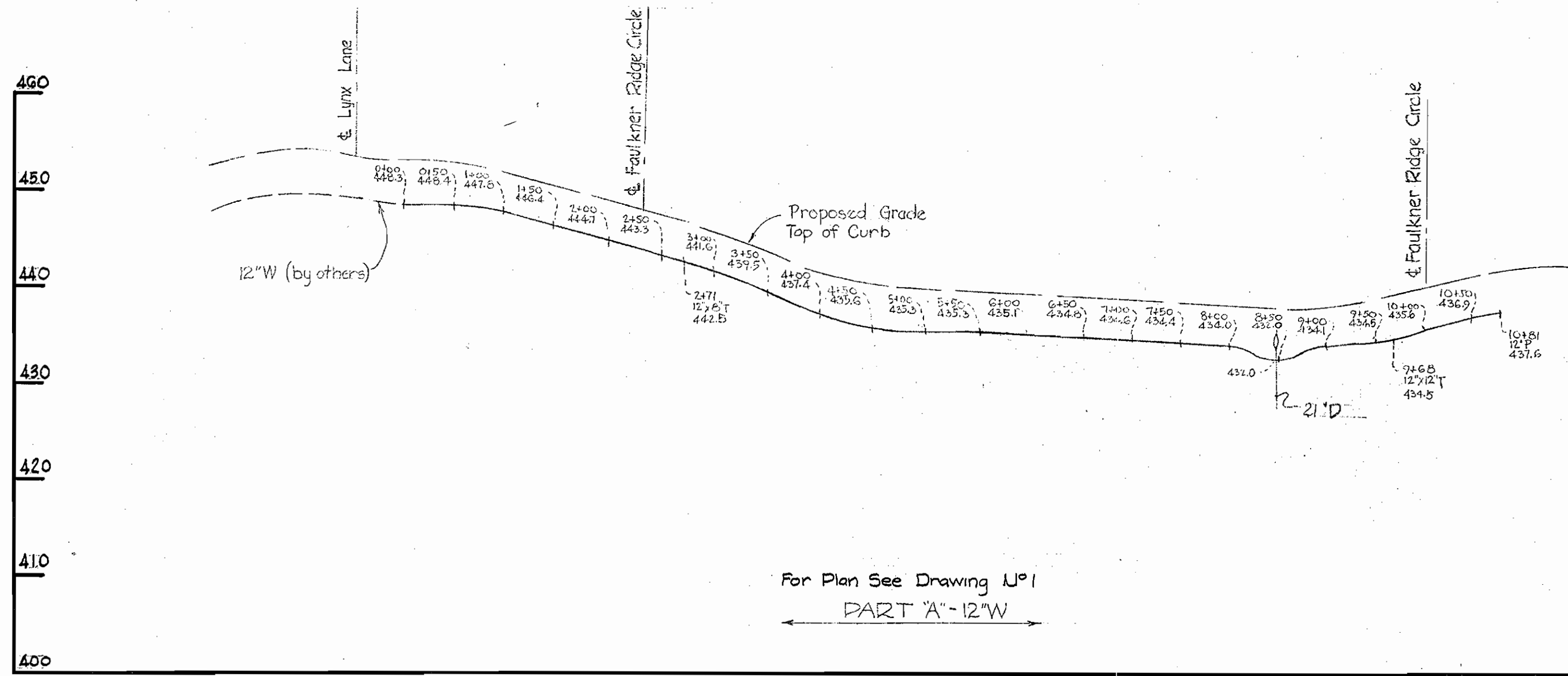
| | | | | | | |
|---|---|----------------------|---|---|--------------------------|----------------------|
| WHITMAN, REQUARDT & ASSOCIATES ENGINEERS 1304 ST. PAUL ST. BALTIMORE, MARYLAND | HOWARD COUNTY METROPOLITAN COMMISSION 6/8/67 W. O. Albert CHIEF ENGINEER | CONTRACT NO. 168-W&S | PLAN & PROFILES OF WATER & SEWER MAINS | COLUMBIA VILLAGE OF WILDE LAKE ELECTION DISTRICT-CLARKSVILLE No.5 | DRAWING NO. 4 OF 6 | SCALE AS SHOWN |
|---|---|----------------------|---|---|--------------------------|----------------------|

W. O. 5735

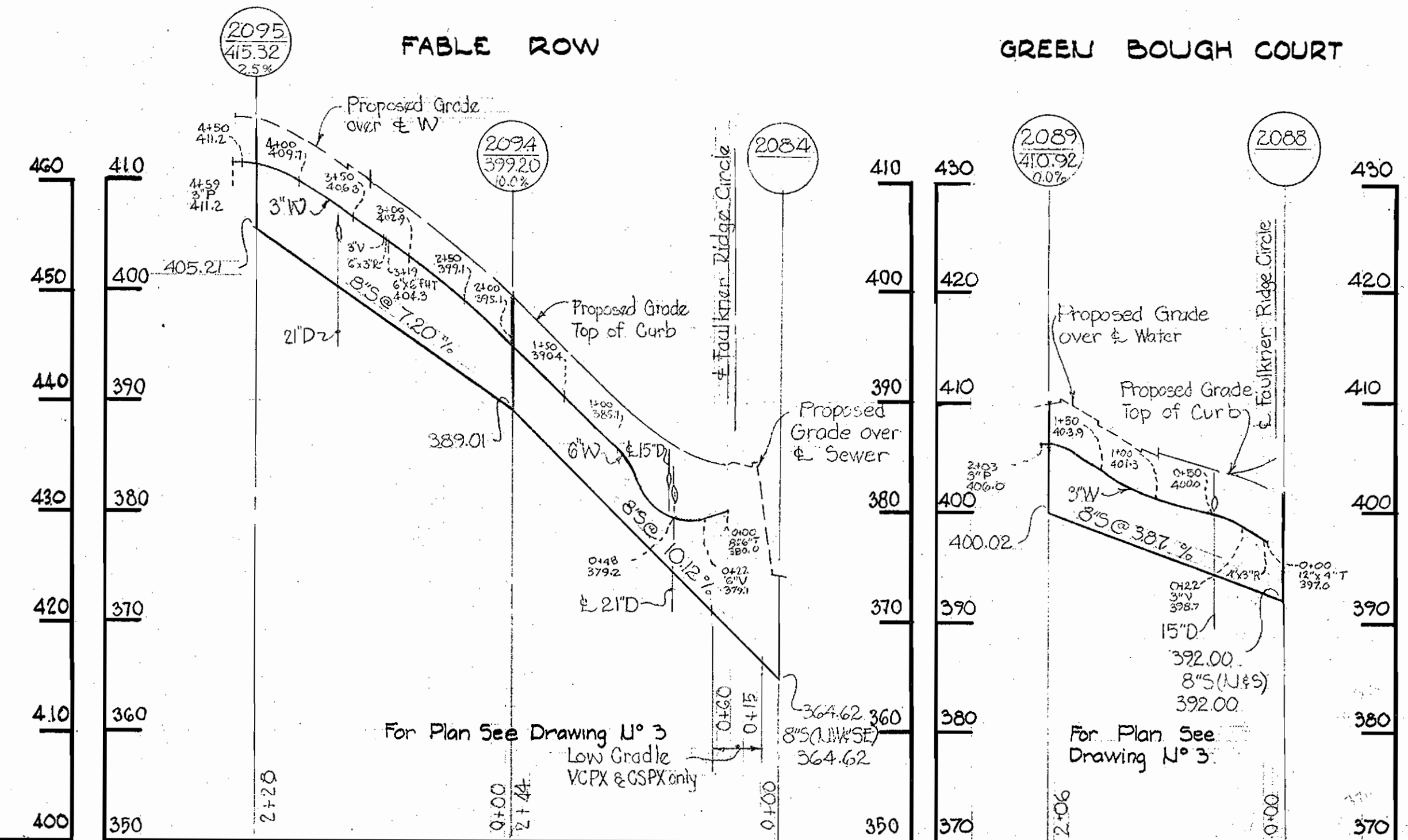
AS BUILT NOV. 20, 1967

WS 168 W&S/4

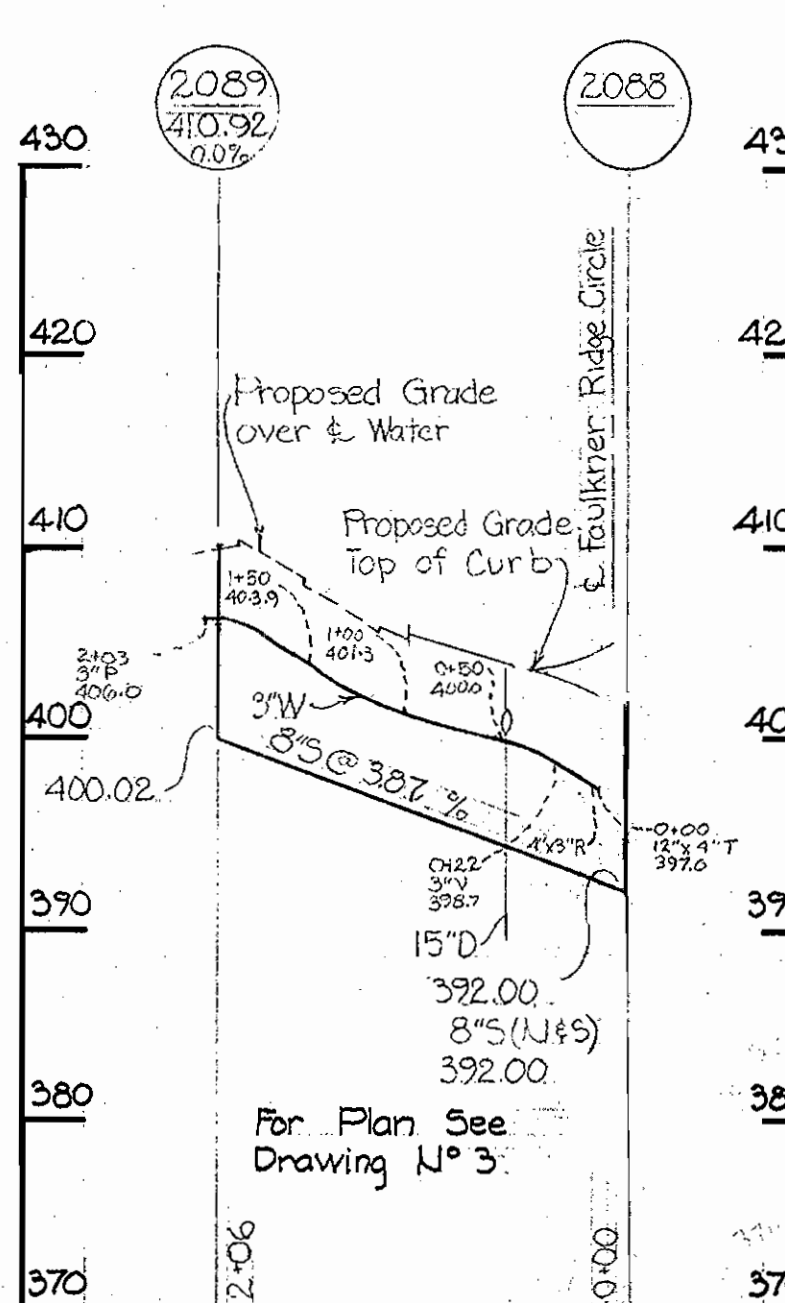
TWIN RIVERS ROAD



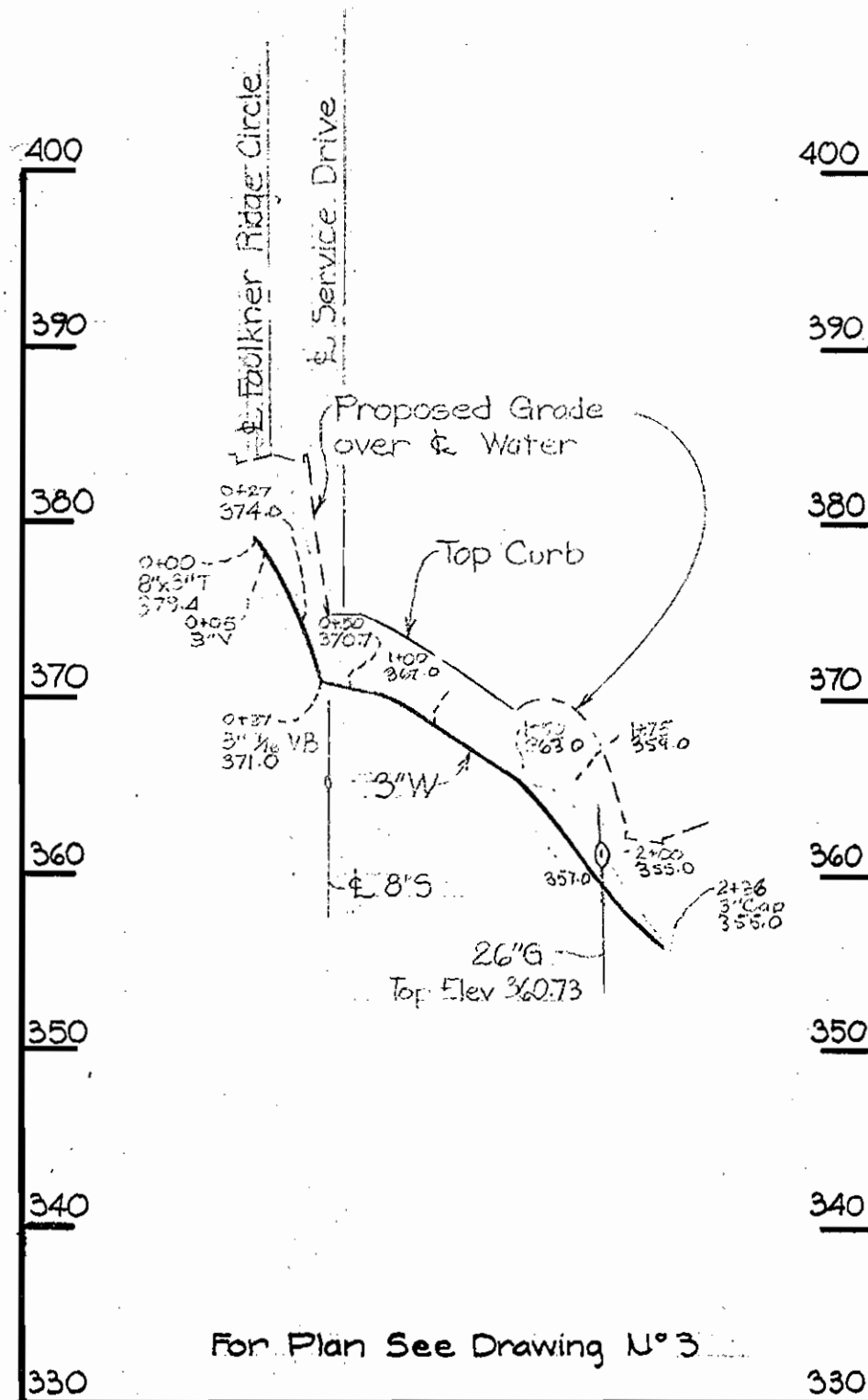
FABLE ROW



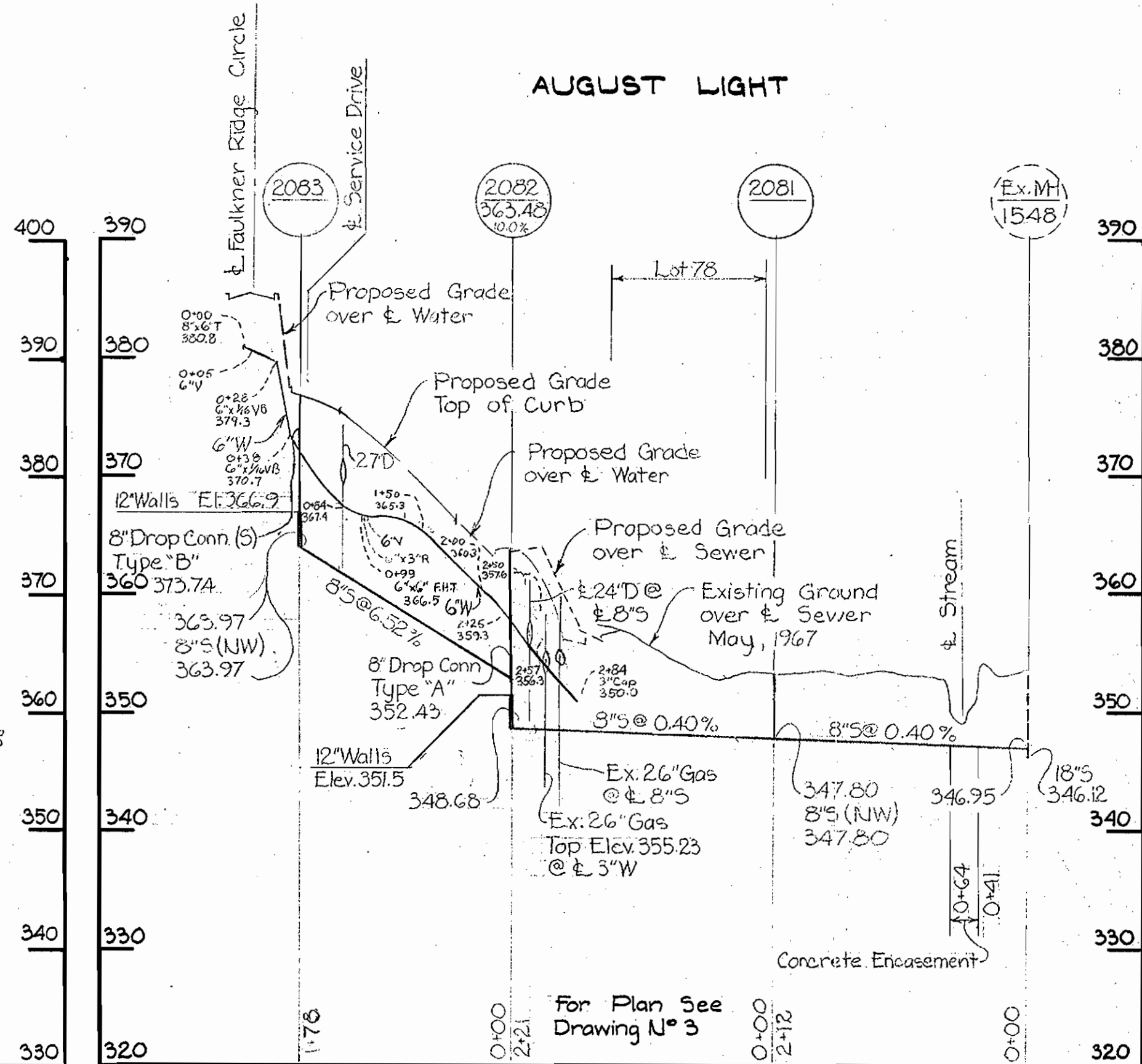
GREEN BOUGH COURT



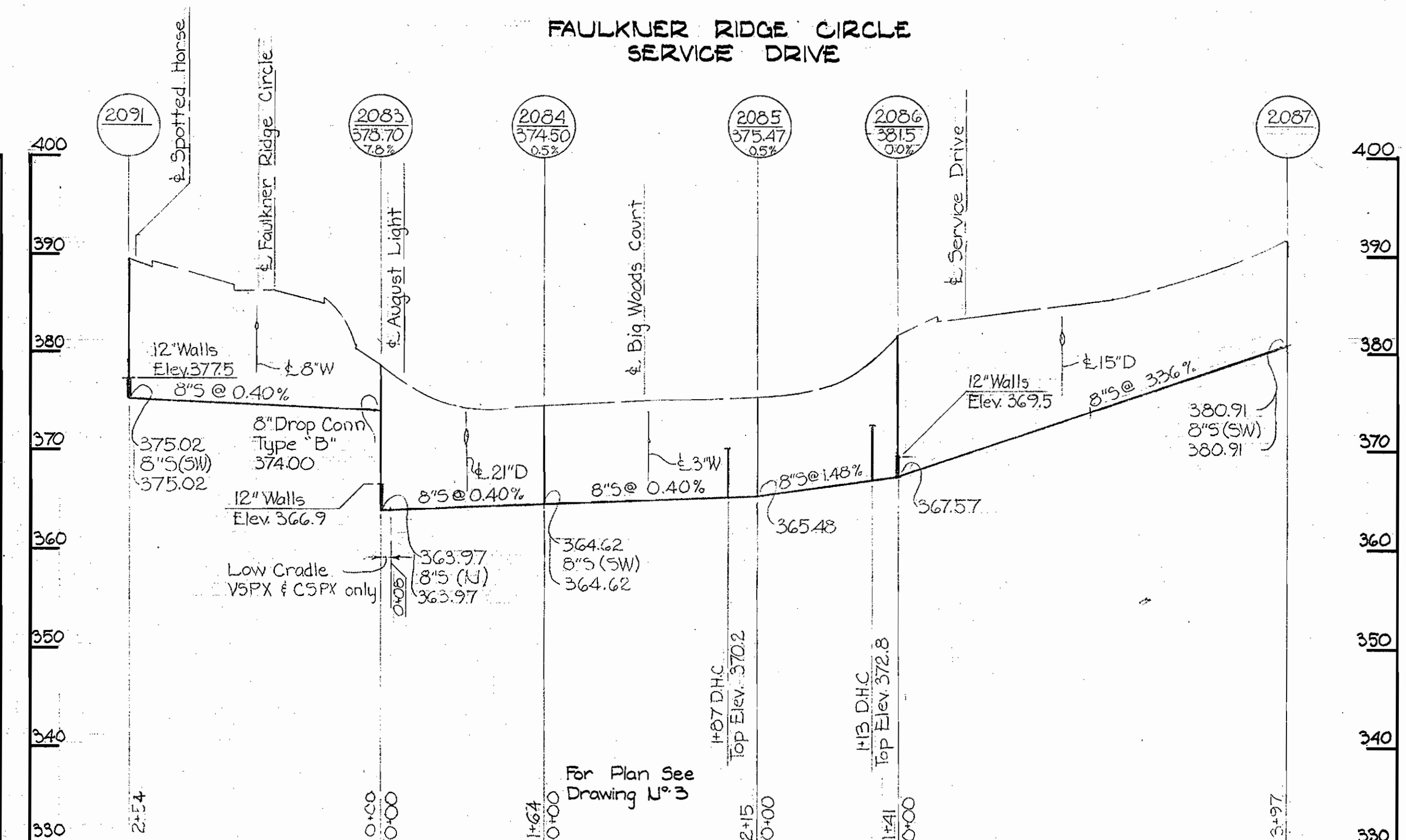
BIG WOODS COURT



AUGUST LIGHT



FAULKNER RIDGE CIRCLE SERVICE DRIVE



Kenneth A. McCord
Faulkner Ridge
Contract U^o 168 W & S

WHITMAN, REQUARDT & ASSOCIATES
ENGINEERS
1304 ST. PAUL ST.
BALTIMORE, MARYLAND

HOWARD COUNTY METROPOLITAN COMMISSION
6/8/67 DATE
W O Libat CHIEF ENGINEER

CONTRACT NO. 168 W & S

PROFILES OF
WATER AND SEWER MAINS

COLUMBIA
VILLAGE OF WILDE LAKE
ELECTION DISTRICT-CLARKSVILLE No.5

DRAWING NO. 6 OF 6
SCALE H-1"=100' V-1"=10'

WS 168 W & S/6