
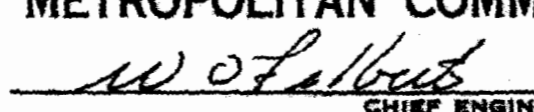


CONTRACT 163-W
WATER MAIN EXTENSIONS
HOWARD COUNTY METROPOLITAN COMMISSION
ELLICOTT CITY, MARYLAND

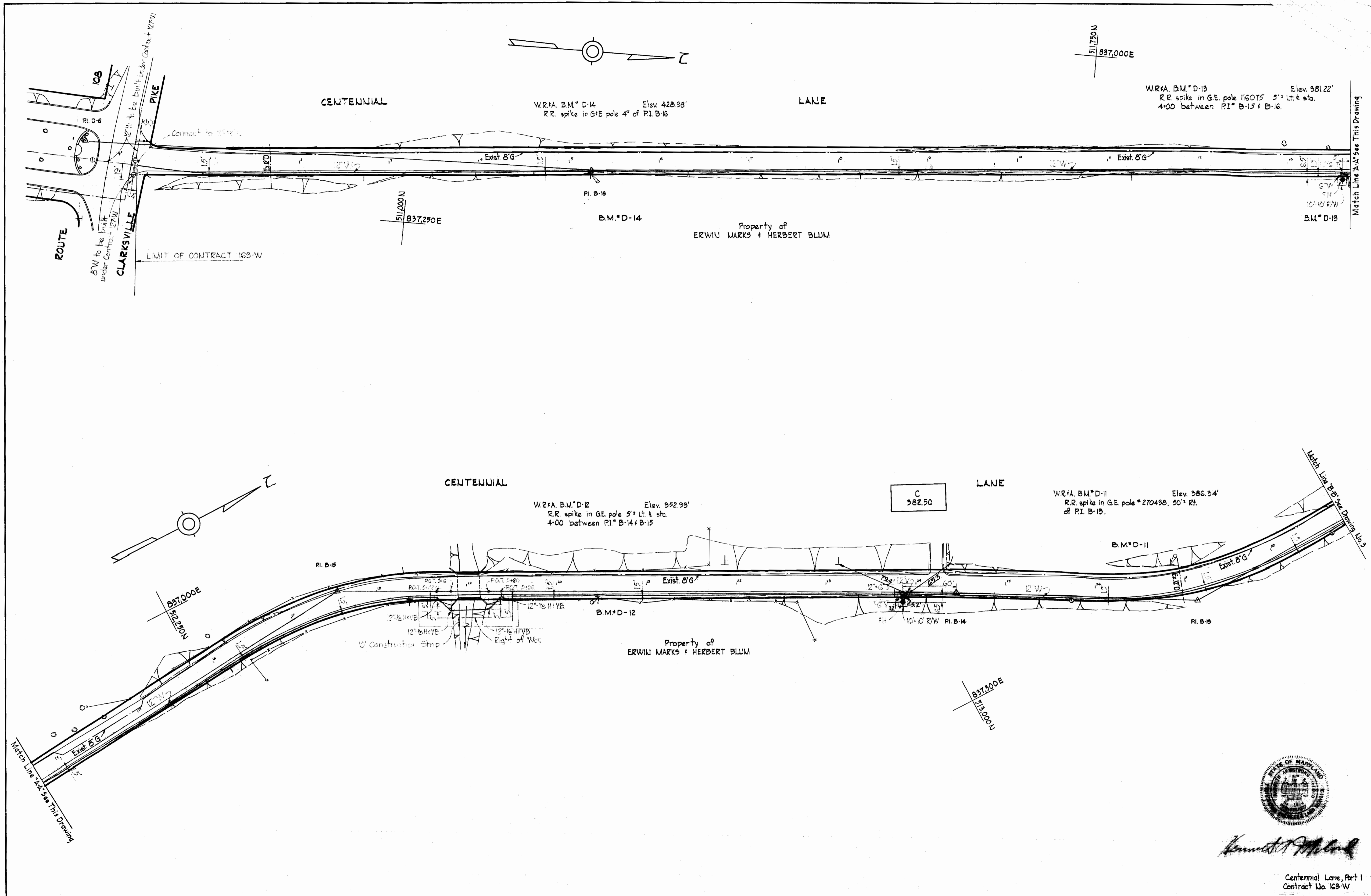

James H. Whitman
 Centennial Lane, Part 1
 Contract No. 163-W

163-W/1

WHITMAN, REQUARDT & ASSOCIATES ENGINEERS 1304 ST. PAUL ST. BALTIMORE, MARYLAND	HOWARD COUNTY METROPOLITAN COMMISSION DATE: 1-4-67  CHIEF ENGINEER	CONTRACT NO. 163-W	LOCATION MAP OF WATER MAIN EXTENSIONS	ELECTION DISTRICT ELLICOTT CITY NO. 2	DRAWING NO. 1 OF 6 SCALE AS SHOWN
---	--	--------------------	--	--	--------------------------------------

AS BUILT 23 AUG '67

WS 163-W/2

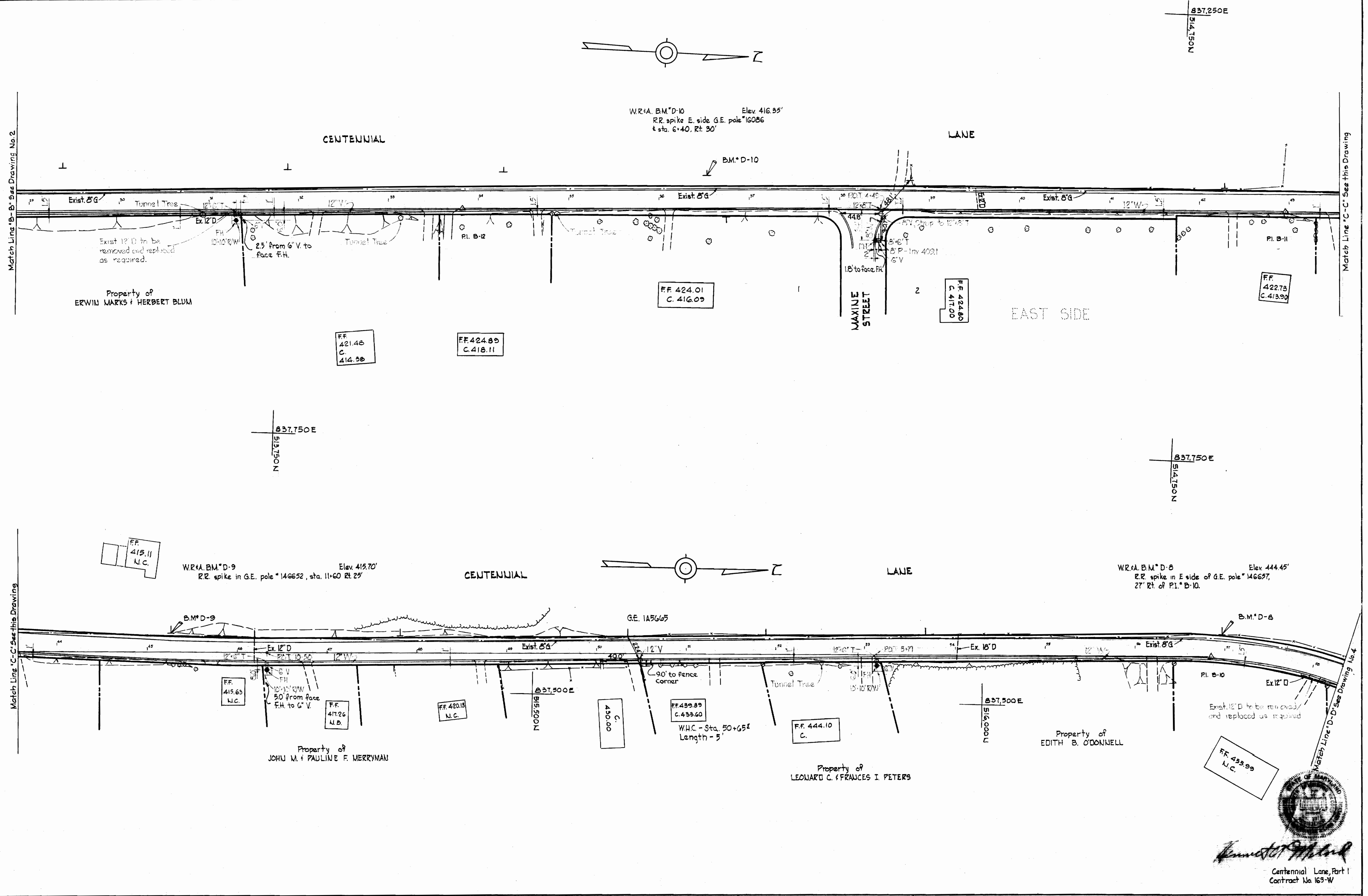


Harold T. M...

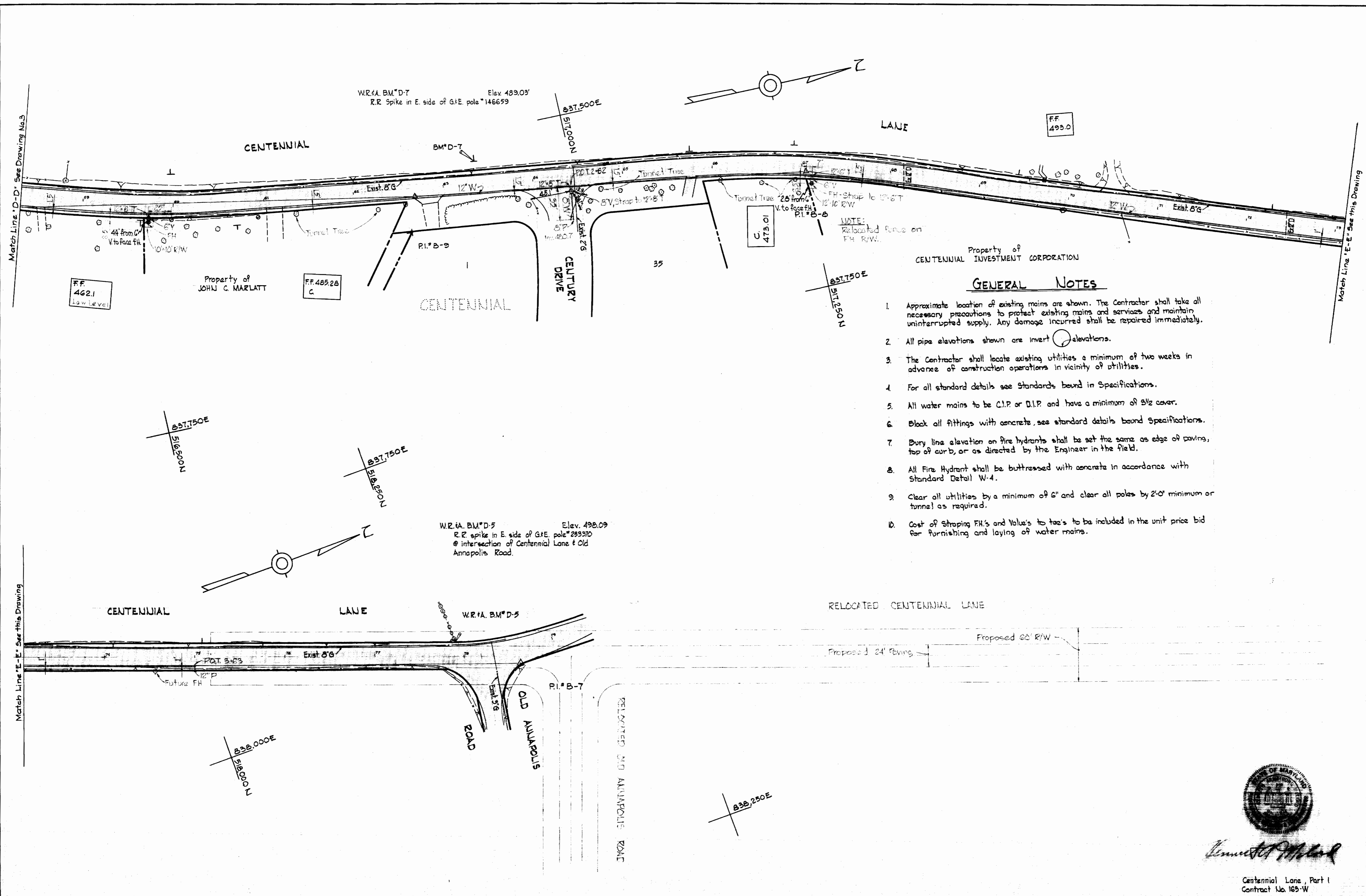
Centennial Lane, Part 1
Contract No. 163-W

WHITMAN, REQUARDT & ASSOCIATES ENGINEERS 1304 ST. PAUL ST. BALTIMORE, MARYLAND	HOWARD COUNTY METROPOLITAN COMMISSION DATE: 4-4-67 <i>W. O. Lubert</i> CHIEF ENGINEER	CONTRACT NO. 163-W	PLAN OF WATER MAINS	ELECTION DISTRICT ELLICOTT CITY NO. 2	DRAWING NO. 2 OF 6 SCALE 1" = 50' <small>310-479 311-479 312-479 313-479</small>
---	--	--------------------	------------------------	--	--

WS 163-W/5



WHITMAN, REQUARDT & ASSOCIATES ENGINEERS 1304 ST. PAUL ST. BALTIMORE, MARYLAND	HOWARD COUNTY METROPOLITAN COMMISSION DATE: 1-4-67 CHIEF ENGINEER: <i>W. O. Peters</i>	CONTRACT NO. 163-W	PLAN OF WATER MAINS	ELECTION DISTRICT ELLICOTT CITY NO.2	DRAWING NO. 3 OF 6 SCALE 1"=50' <small>513-749 514-749 515-749 516-749</small>
---	--	--------------------	------------------------	---	--



- Property of
CENTENNIAL INVESTMENT CORPORATION
- GENERAL NOTES**
1. Approximate location of existing mains are shown. The Contractor shall take all necessary precautions to protect existing mains and services and maintain uninterrupted supply. Any damage incurred shall be repaired immediately.
 2. All pipe elevations shown are invert elevations.
 3. The Contractor shall locate existing utilities a minimum of two weeks in advance of construction operations in vicinity of utilities.
 4. For all standard details see Standards bound in Specifications.
 5. All water mains to be C.I.P. or D.I.P. and have a minimum of 3/2' cover.
 6. Block all fittings with concrete, see standard details bound Specifications.
 7. Bury line elevation on fire hydrants shall be set the same as edge of paving, top of curb, or as directed by the Engineer in the field.
 8. All Fire Hydrant shall be buttressed with concrete in accordance with Standard Detail W-4.
 9. Clear all utilities by a minimum of 6" and clear all poles by 2'-0" minimum or tunnel as required.
 10. Cost of Strapping F.H.'s and Valve's to trees to be included in the unit price bid for furnishing and laying of water mains.



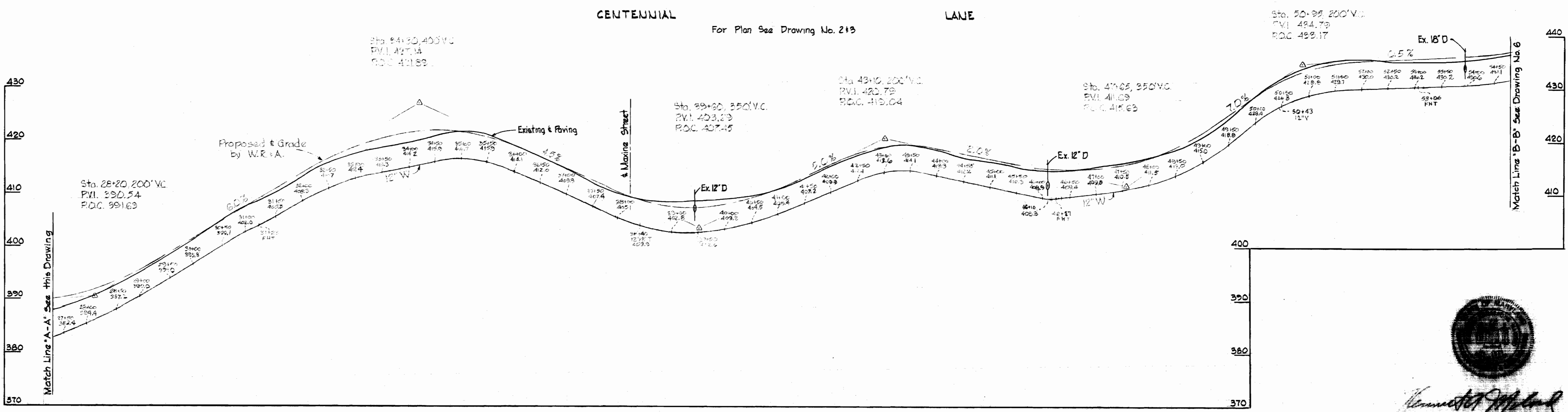
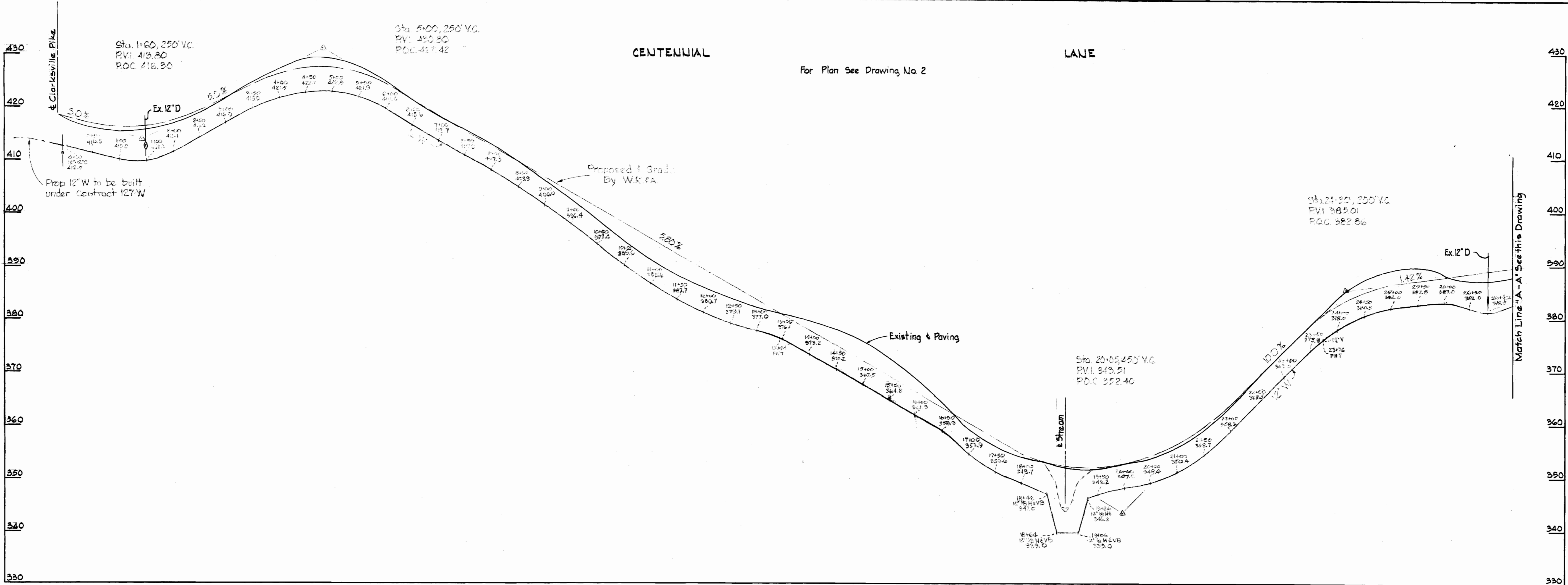
Herbert M. ...

Centennial Lane, Part I
Contract No. 163-W

US 163-W/4

WHITMAN, REQUARDT & ASSOCIATES ENGINEERS 1304 ST. PAUL ST. BALTIMORE, MARYLAND	HOWARD COUNTY METROPOLITAN COMMISSION DATE 4-67 <i>W. O. ...</i> CHIEF ENGINEER	CONTRACT NO. 163-W	PLAN OF WATER MAINS	ELECTION DISTRICT ELLICOTT CITY NO.2	DRAWING NO. 4 OF 6 SCALE 1" = 50' 516-479 517-479 518-479 FB 5677
---	--	--------------------	------------------------	---	---

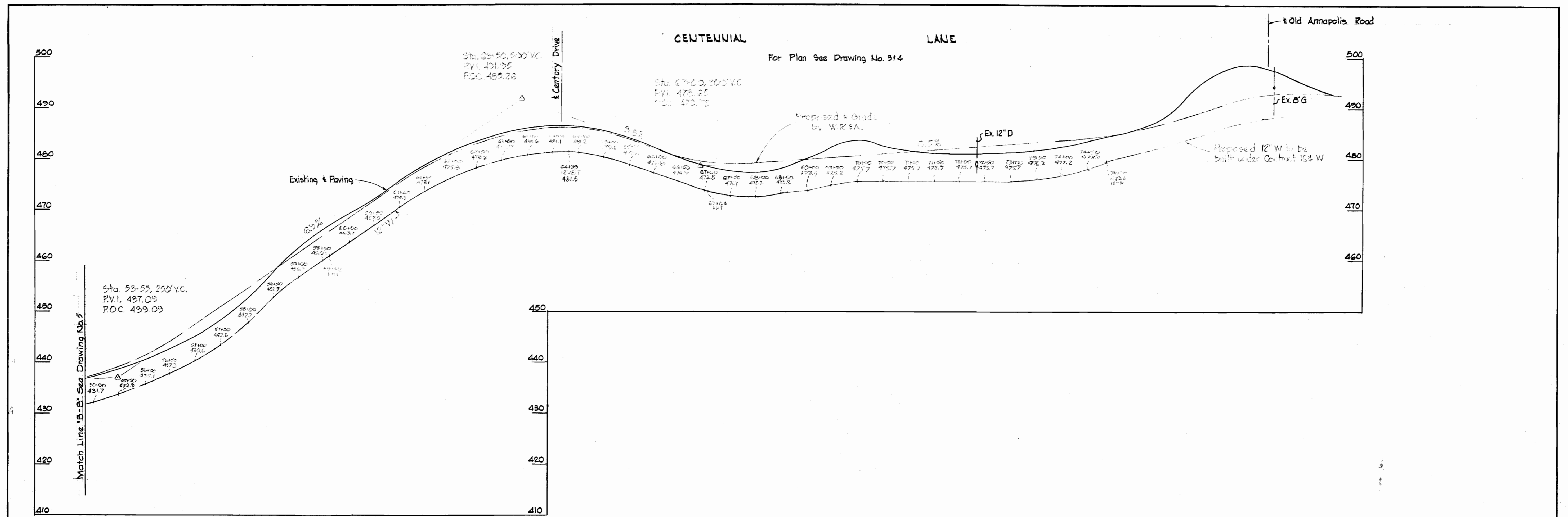
WS 163-W/5



Howard C. ...
 Centennial Lane, Part 1
 Contract No. 163-W

WHITMAN, REQUARDT & ASSOCIATES ENGINEERS 1304 ST. PAUL ST. BALTIMORE, MARYLAND	HOWARD COUNTY METROPOLITAN COMMISSION DATE: 4-67 HOWARD C. ... CHIEF ENGINEER	CONTRACT NO. 163-W	PROFILE OF WATER MAINS	ELECTION DISTRICT ELLICOTT CITY NO. 2	DRAWING NO. 5 OF 6 SCALE: H-1"=100', V-1"=10'
---	--	--------------------	---------------------------	--	--

WS 163-W/6



Howard County Seal
Howard County Seal
 Centennial Lane, Part 1
 Contract No. 163-W

WHITMAN, REQUARDT & ASSOCIATES ENGINEERS 1304 ST. PAUL ST. BALTIMORE, MARYLAND	HOWARD COUNTY METROPOLITAN COMMISSION DATE <u>4-67</u> <i>W.O. Libber</i> CHIEF ENGINEER	CONTRACT NO. <u>163-W</u>	PROFILE OF WATER MAINS	ELECTION DISTRICT ELLICOTT CITY NO.2	DRAWING NO. <u>6</u> OF <u>6</u> SCALE H-1"=100' V-1"=10'
---	--	---------------------------	---------------------------	---	--