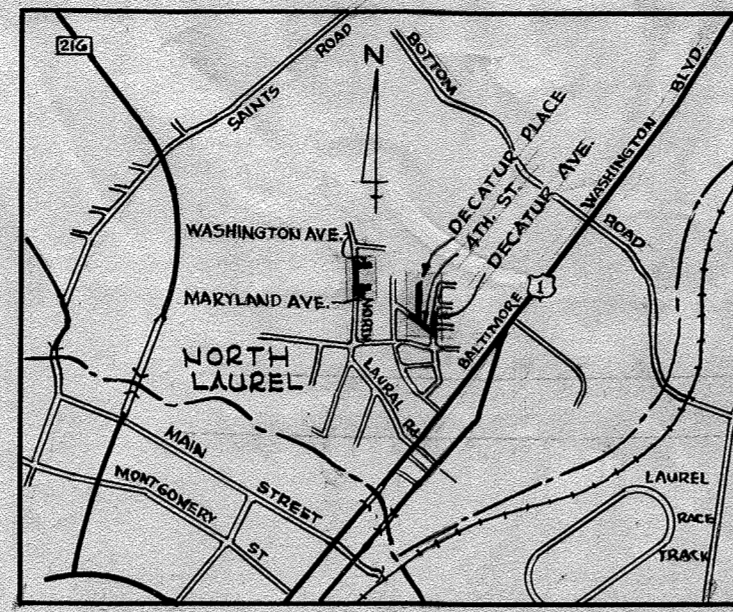
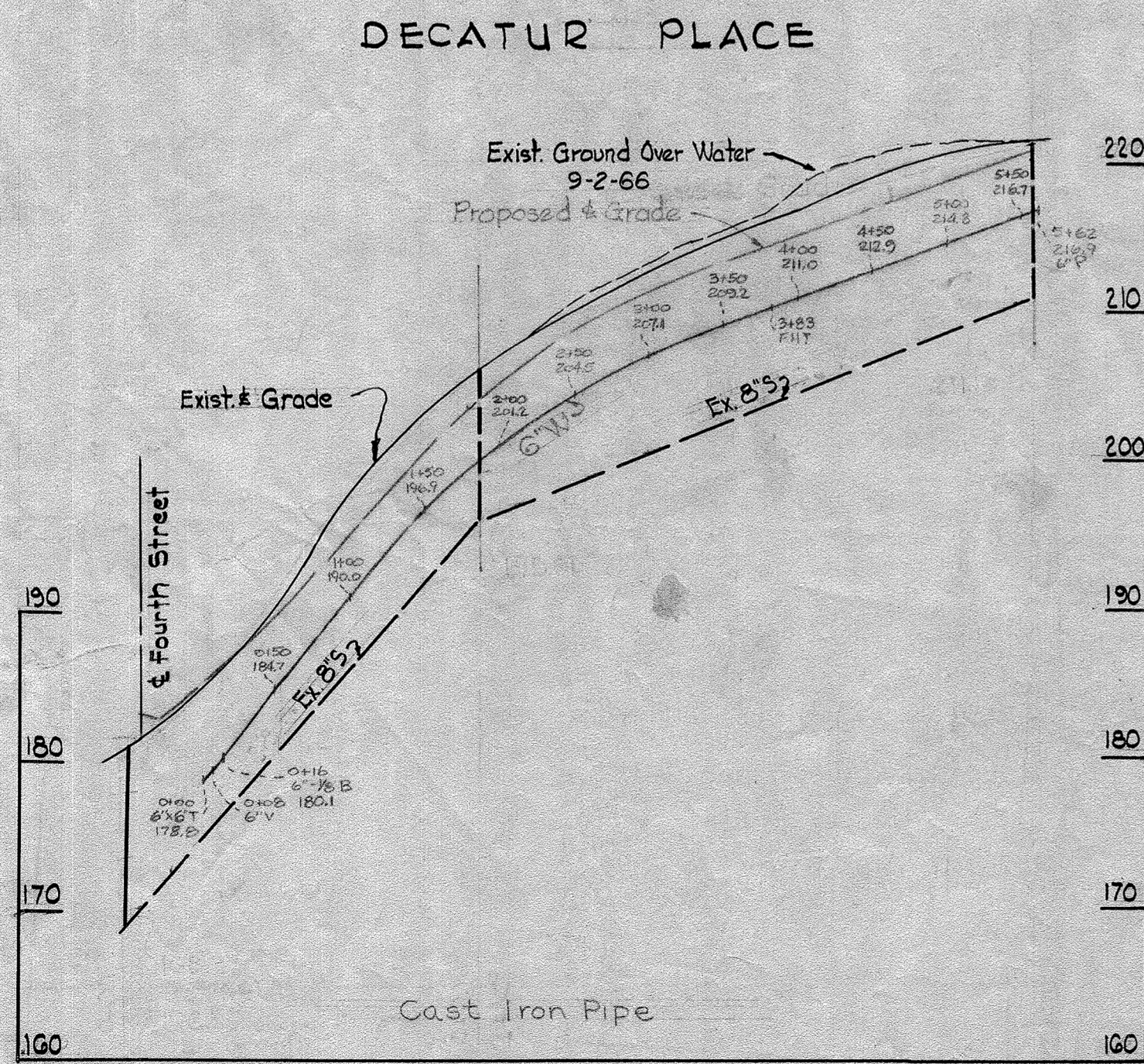
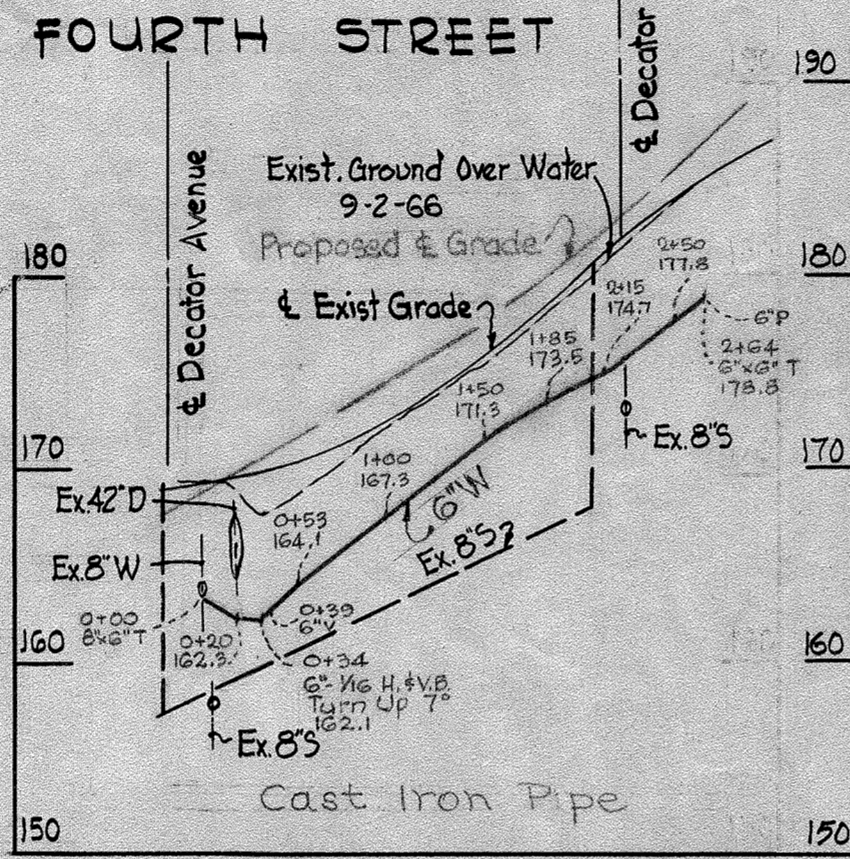
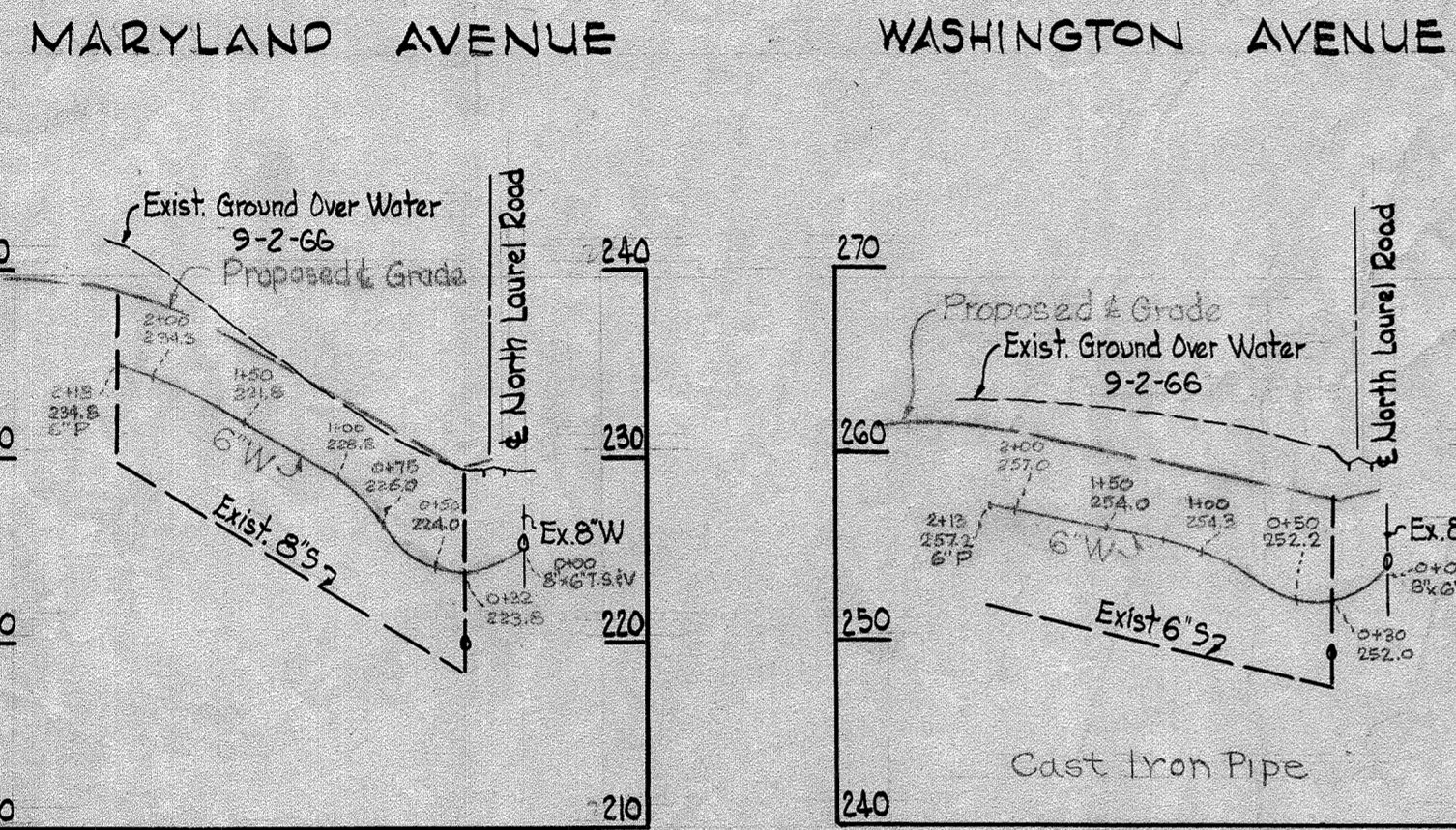


GENERAL NOTES

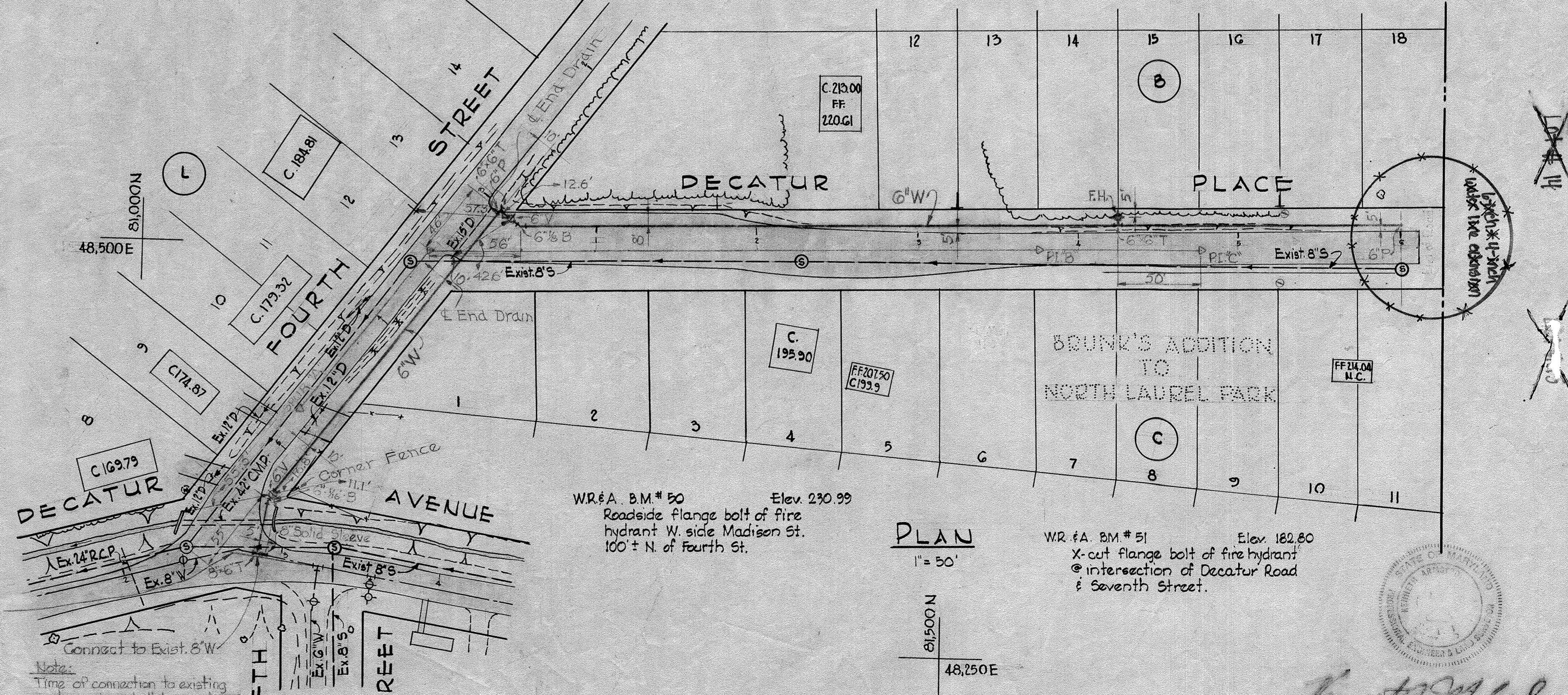
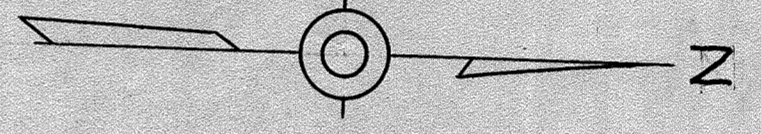
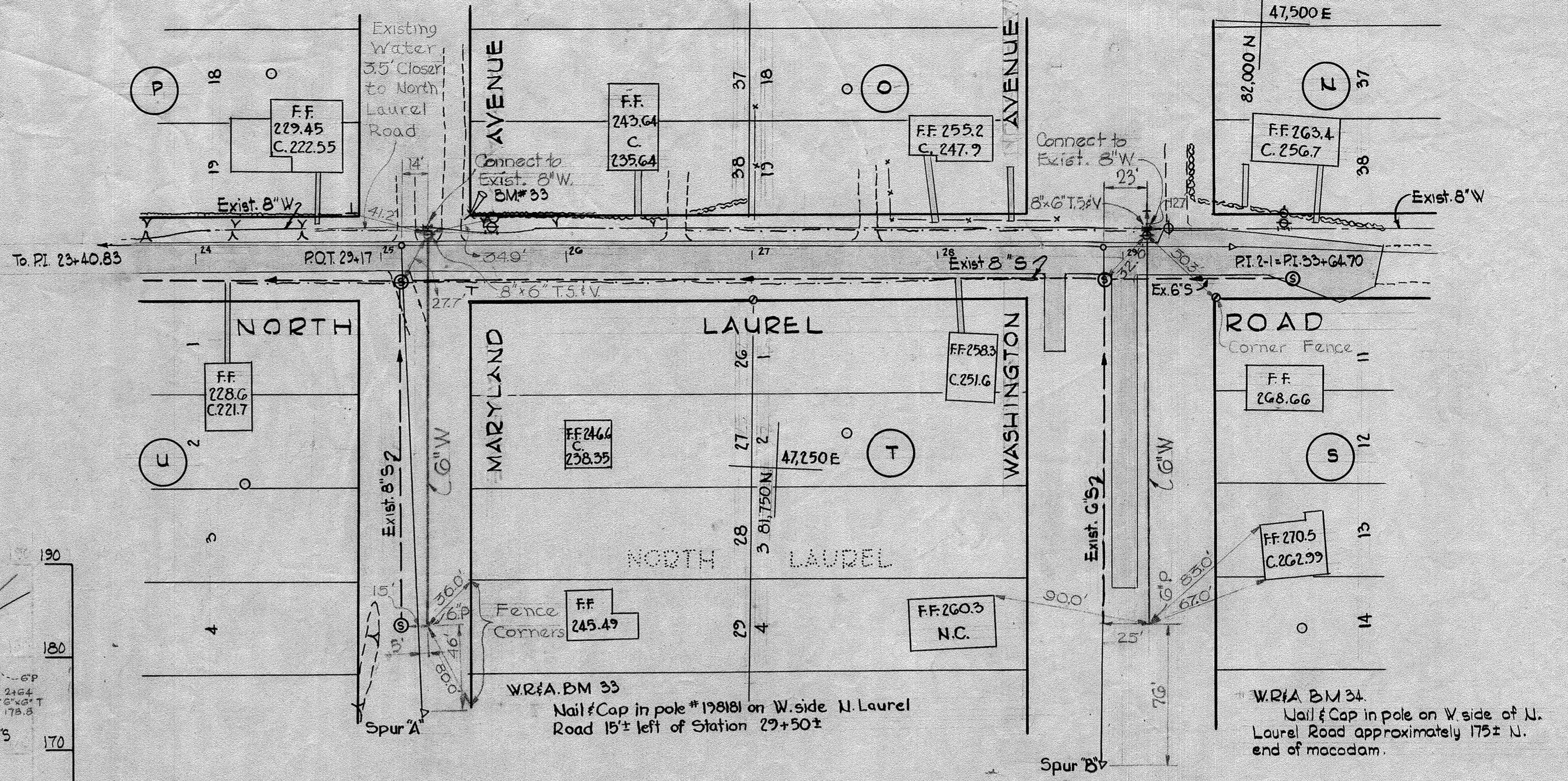
1. Approximate location of existing mains are shown. The Contractor shall take all necessary precautions to protect existing mains and services and maintain uninterrupted supply. Any damage incurred shall be repaired immediately.
2. All pipe elevations shown are invert \odot elevations.
3. The Contractor shall locate existing utilities a minimum of two weeks in advance of construction operations in vicinity of utilities.
4. For all standard details see standards bound in Specifications.
5. All water mains to be C.I.P. or D.I.P. and have a minimum of 3/2' cover.
6. Block all fittings with concrete, see standard details bound in specifications.
7. Bury line elevation on fire hydrants shall be set the same as edge of paving or as directed by the Engineer in the field.
8. Buttress fire hydrants with concrete; provide copper pipe at weep holes as required for positive drainage. For buttress dimensions see standard detail W-8 Buttress for Caps.
9. Clear all poles by 2'-0" minimum or tunnel as required. Clear all existing utilities by 6" minimum.



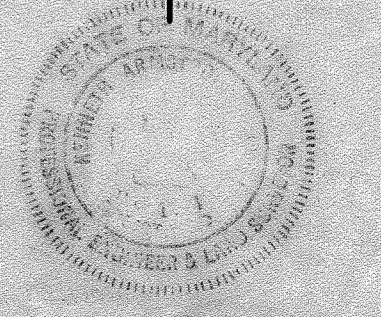
LOCATION MAP
Scale: 1" = 1/2 mile



PROFILE
Scale: Hor. 1" = 100'
Vert 1" = 10'



PLAN
1" = 30'



WHITMAN, REQUARDT & ASSOCIATES
ENGINEERS
1304 ST. PAUL ST.
BALTIMORE, MARYLAND

HOWARD COUNTY METROPOLITAN COMMISSION
DATE: 4-67
W. O. SILLER
CHIEF ENGINEER

CONTRACT NO. 160-W

PLAN AND PROFILE OF
WATER MAINS

ELECTION DISTRICT
GUILFORD NO. 6

DRAWING NO. 1 OF 2
SCALE AS SHOWN

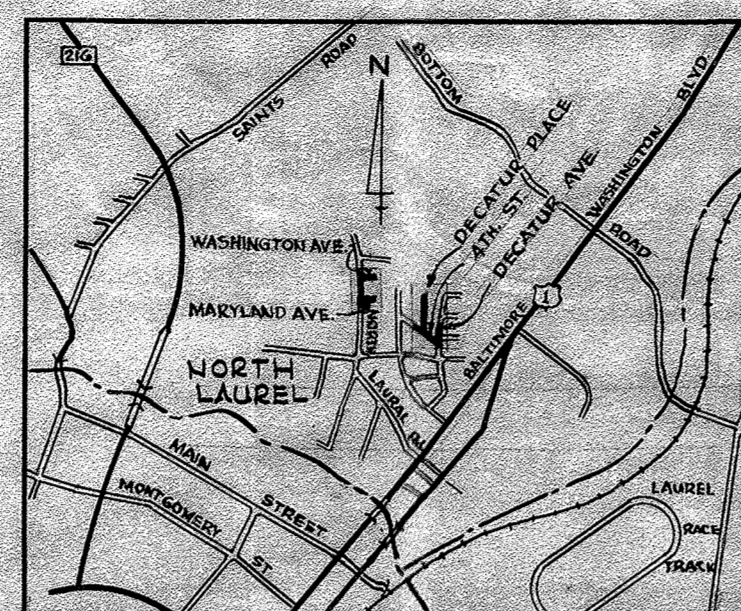
Contract No. 160-W

AS BUILT 20 JUNE 67
FB. 1550, FB. 2560
FB. 2575

WS 160-W/1

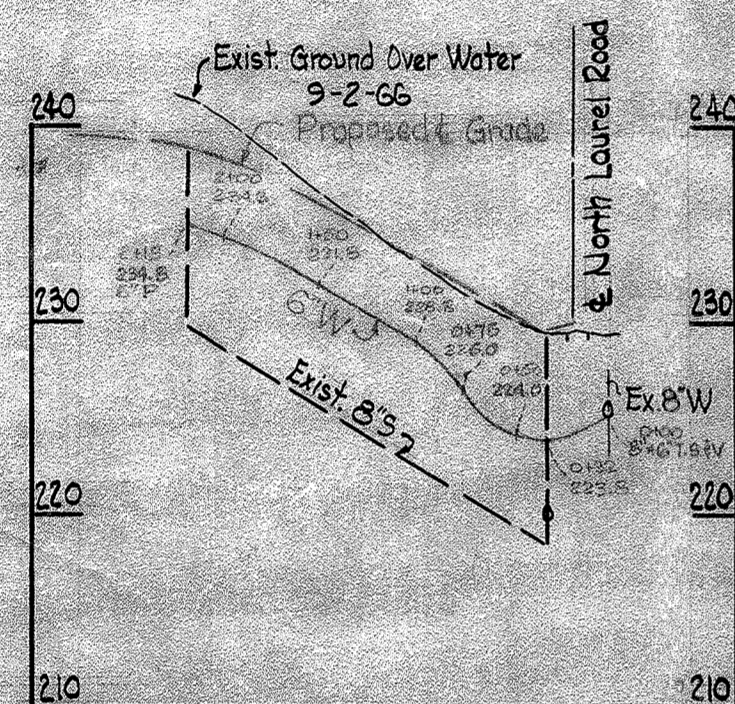
GENERAL NOTES

1. Approximate location of existing mains are shown. The Contractor shall take all necessary precautions to protect existing mains and services and maintain uninterrupted supply. Any damage incurred shall be repaired immediately.
2. All pipe elevations shown are invert (E) elevations.
3. The Contractor shall locate existing utilities a minimum of two weeks in advance of construction operations in vicinity of utilities.
4. For all standard details see standards bound in Specifications.
5. All water mains to be C.I.P. or D.I.P. and have a minimum of 3 1/2' cover.
6. Block all fittings with concrete, see standard details bound in specifications.
7. Bury line elevation on fire hydrants shall be set the same as edge of paving or as directed by the Engineer in the field.
8. Buttress fire hydrants with concrete; provide copper pipe at weep holes as required for positive drainage. For Buttress dimensions see standard detail W-8 Buttress for Caps.
9. Clear all poles by 2'-0" minimum or tunnel as required. Clear all existing utilities by 6' minimum.

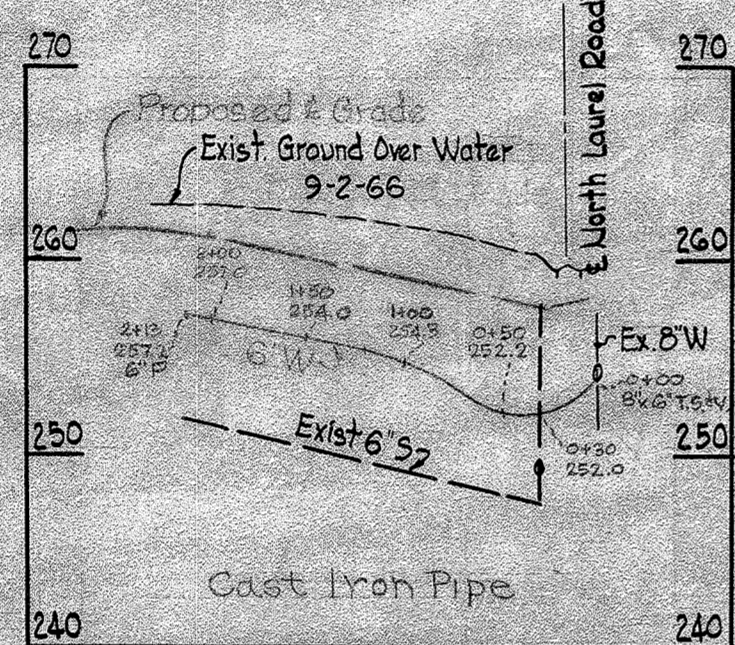


LOCATION MAP
Scale: 1" = 1/2 mile

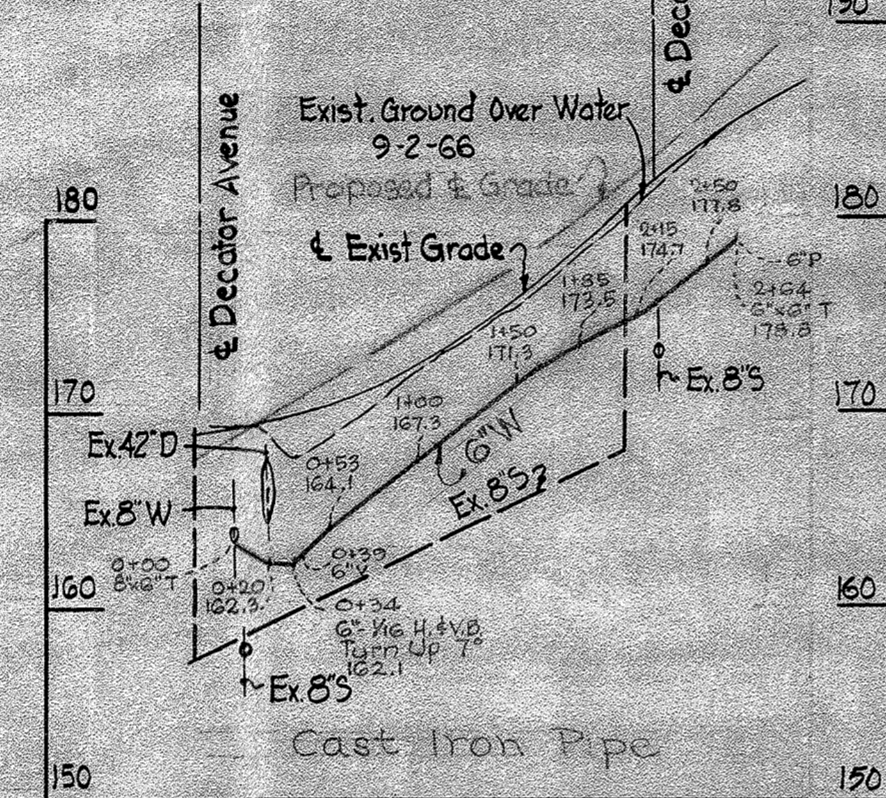
MARYLAND AVENUE



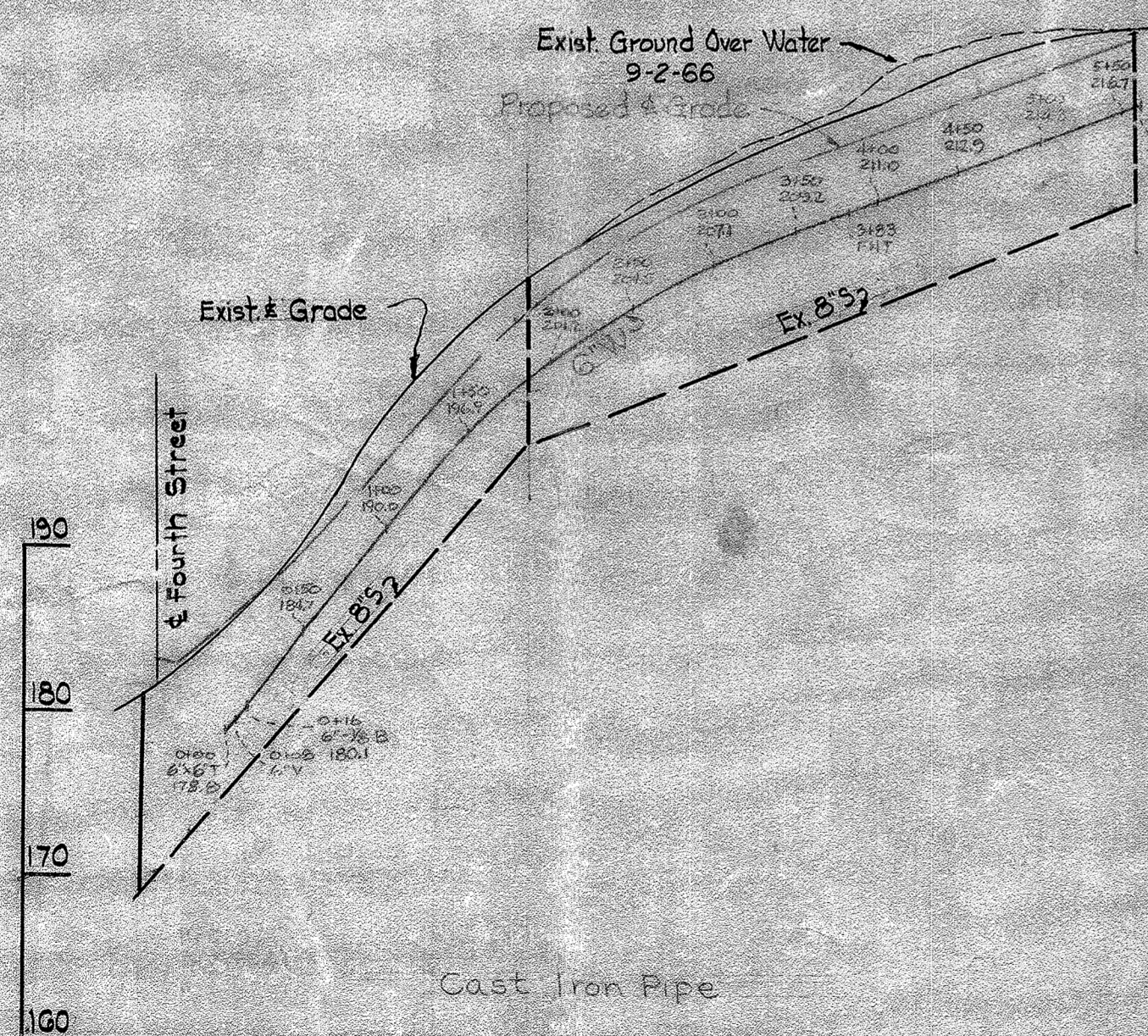
WASHINGTON AVENUE



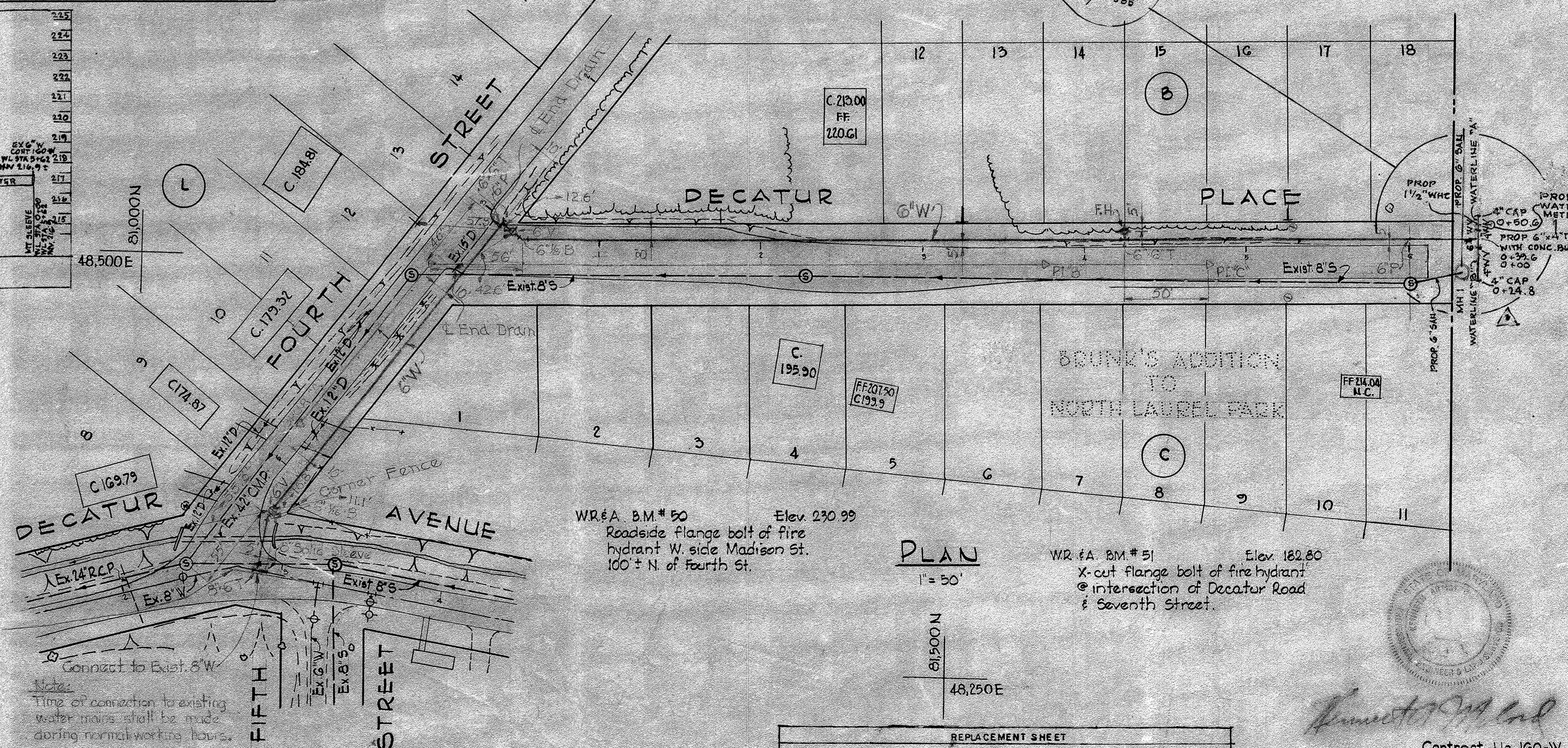
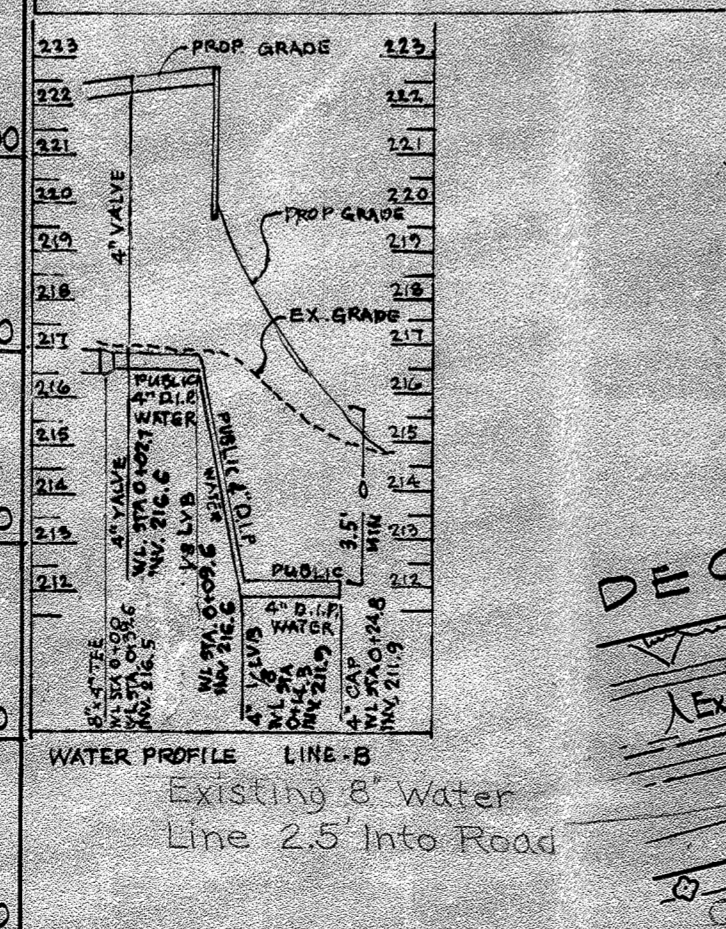
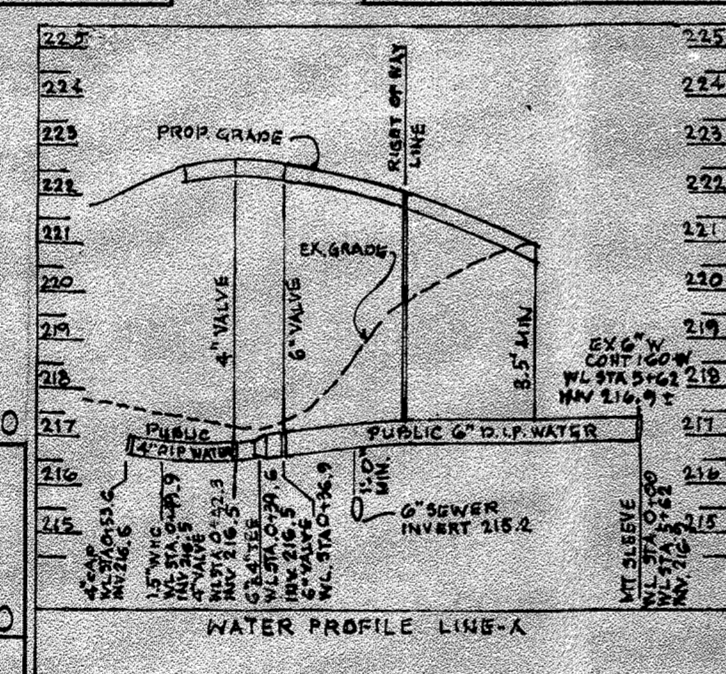
FOURTH STREET



DECATUR PLACE



PROFILE
Scale: Hor. 1" = 100'
Vert 1" = 10'



PLAN
1" = 50'

WHITMAN, REQUARDT & ASSOCIATES
ENGINEERS
1304 ST. PAUL ST.
BALTIMORE, MARYLAND

HOWARD COUNTY METROPOLITAN COMMISSION
DATE: 6-7-67
W. J. LILLIB
CHIEF ENGINEER

CONTRACT NO. 160-W

PLAN AND PROFILE OF
WATER MAINS

ELECTION DISTRICT
GUILFORD NO. 6

DRAWING NO. 2 OF 2
SCALE AS SHOWN

Contract No. 160-W

WRA Δ 11/21/62 Water Extension

BUILT 20 JUNE 67

FB 1550, FB 2560
FB 2573

WS 160-W/1