

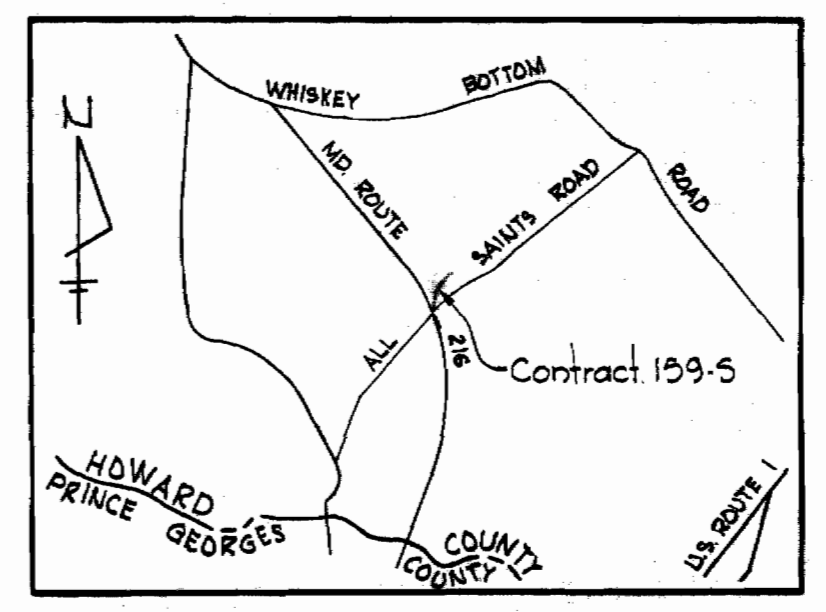
W.R. & A. B.M. #12 Elev. 250.77'
Nail & Cap in pole # 308045 at intersection
of All Saints Road & Robinson Boulevard.

W.R. & A. B.M. #100 Elev. 177.21'
cut in end of conc. headwall of 36" RCP
crossing relocated 216, 1350' S of
intersection of All Saints & Route 216, East
side of Route 216.

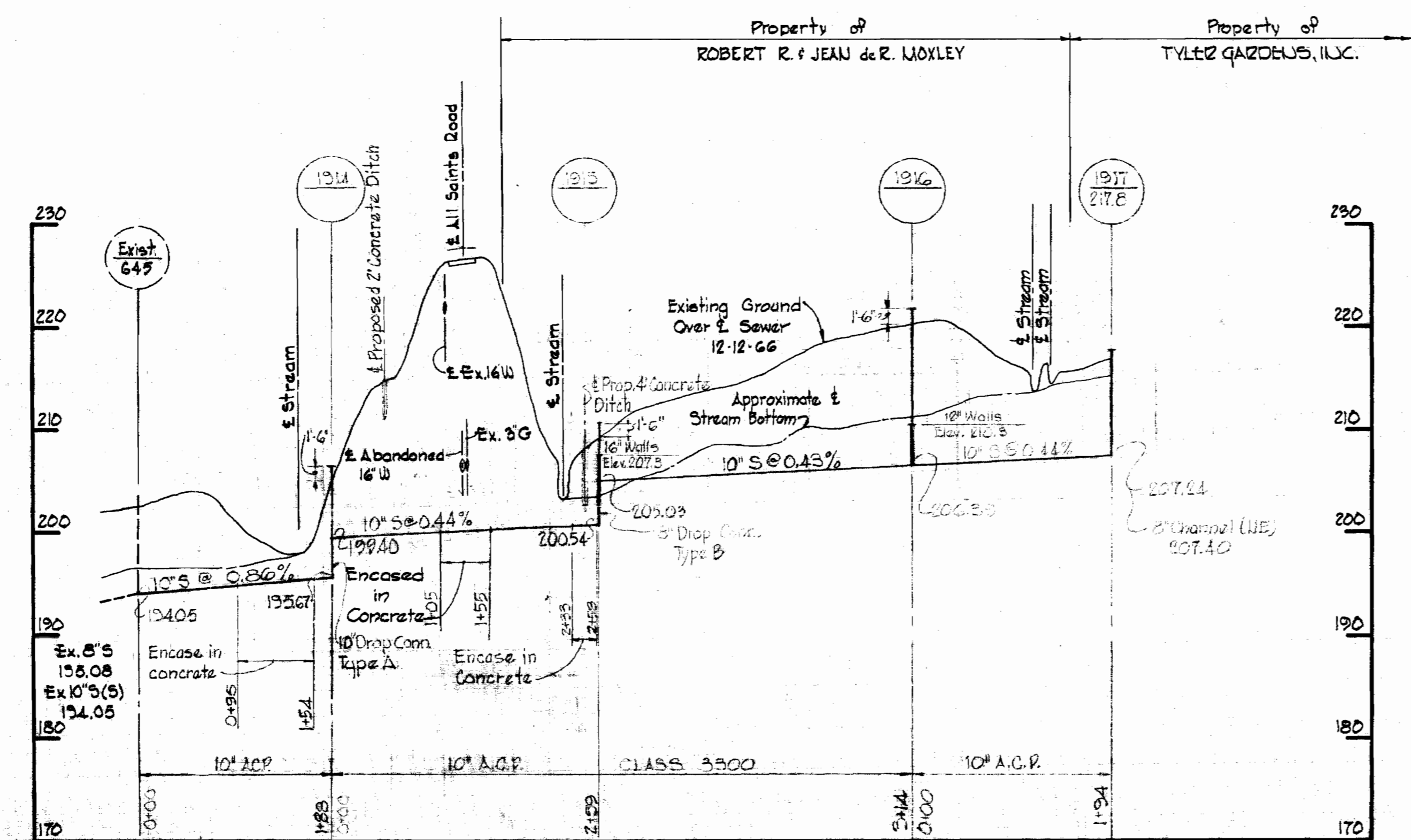
PLAN
Scale: 1"=50'

GENERAL NOTES

1. Approximate location of existing mains shown. The Contractor shall take all necessary precautions to protect existing mains and services and maintain uninterrupted supply. Any damage incurred shall be repaired immediately.
2. All pipe elevations shown are invert elevations.
3. The Contractor shall locate existing utilities a minimum of two weeks in advance of construction operations in vicinity of utilities.
4. For all standard details see standards bound in Specifications.
5. The Contractor shall provide a joint in all sewer mains within 2'-0" from exterior of manholes.
6. Clear all utilities by a minimum of 6'.
7. Cost of Grouted Dip Dip to be included in the unit price bid for furnishing and laying of sewer mains.



VICINITY MAP
Scale: 1"=1/2 mile

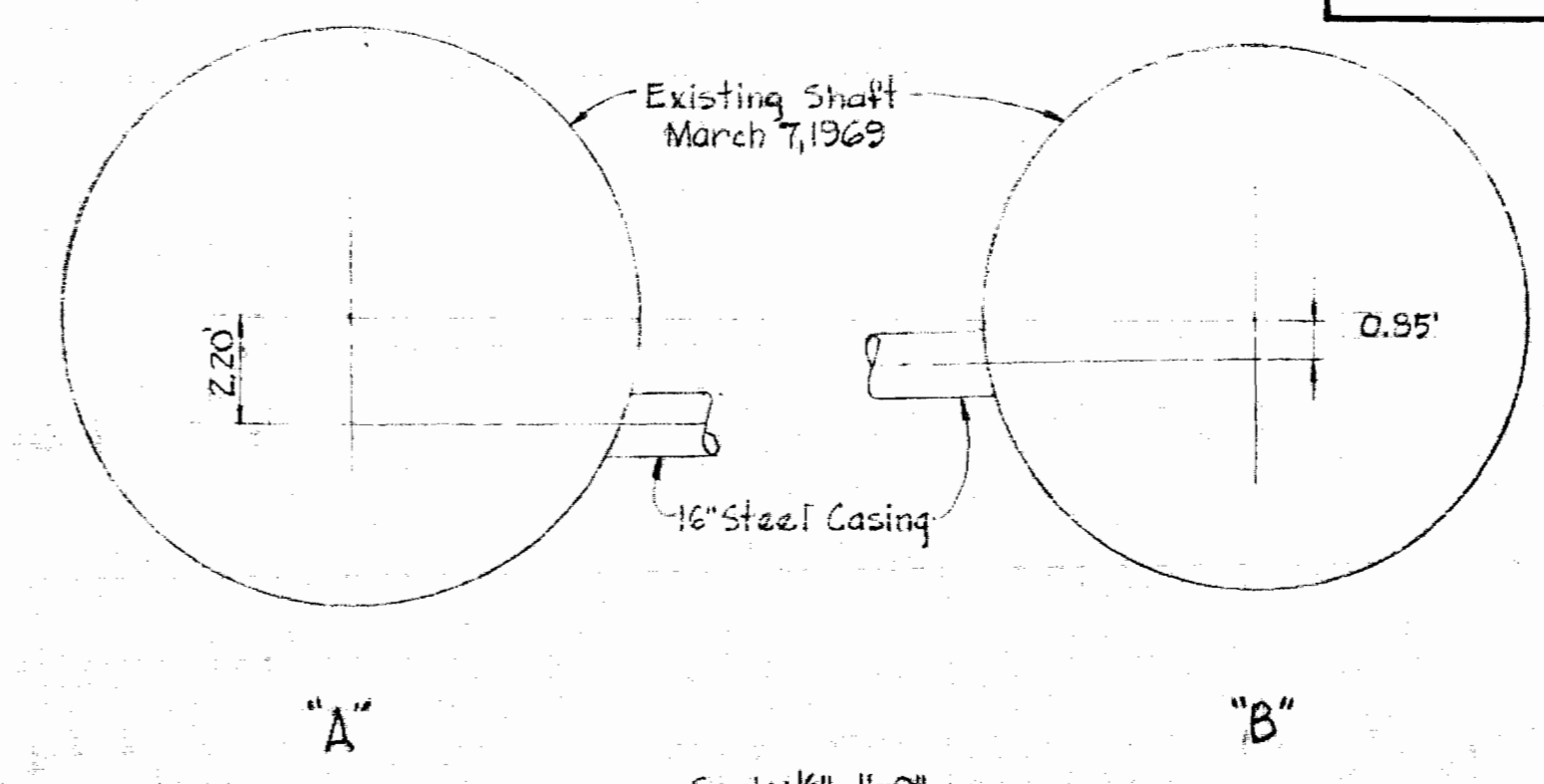


PROFILE

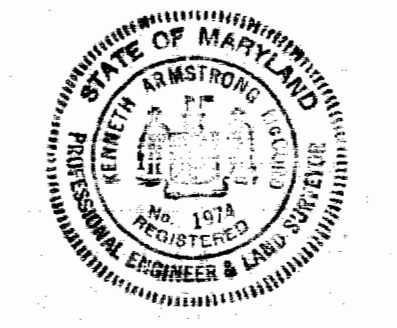
Scale: Hor: 1"=100'
Vert: 1"=10'

Stakeout and Diary in
F.B. #4327

Note:
Brick Manholes to have 16" and
10" Waits as called for on the
profile.



QUANTITIES	
10" Sewer Main	950'



Howard M. Wood

Sherwood Park Apts.
Contract No. 159-5

1-3-69	Revised alignment MH1914 to MH1915 and MH1915 to MH1916
12-20-68	Revised alignment MH1915 to MH1917
11-20-67	Revised elevation of three inch gas main
10-1-67	Revision

3-7-69	Revised alignment MH645 to MH1916
--------	-----------------------------------

WHITMAN, REQUARDT & ASSOCIATES ENGINEERS 1304 ST. PAUL ST. BALTIMORE, MARYLAND	HOWARD COUNTY METROPOLITAN COMMISSION DATE: 11-5-67 <i>W. O. Wood</i> CHIEF ENGINEER	CONTRACT NO. 159-S	PLAN AND PROFILE OF SEWER MAIN	ELECTION DISTRICT GUILFORD NO. 6	DRAWING NO. 1 OF 2	SCALE 1"=50'
					W. O. 5129-2	AS BUILT AUGUST 14, 1969 F.B. 3744

WS 159-S/1

