

**CONTRACT 157-S**  
**EDGAR FARM INTERCEPTOR**  
**HOWARD COUNTY METROPOLITAN COMMISSION**  
**ELLICOTT CITY, MARYLAND**

QUANTITIES	
ITEM	QUANTITY
14" S	4227
12" S	5878



*Kenneth A. McGoff*

Contract No. 157-S

WHITMAN, REQUARDT & ASSOCIATES ENGINEERS 1304 ST. PAUL ST. BALTIMORE, MARYLAND	HOWARD COUNTY METROPOLITAN COMMISSION DATE <u>11-16-66</u> <i>W. O. L. Bell</i> CHIEF ENGINEER	CONTRACT NO. <u>157-S,</u>	LOCATION MAP	EDGAR FARM INTERCEPTOR	DRAWING NO. <u>1</u> OF <u>7</u> SCALE AS SHOWN
---	--	----------------------------	--------------	------------------------	--

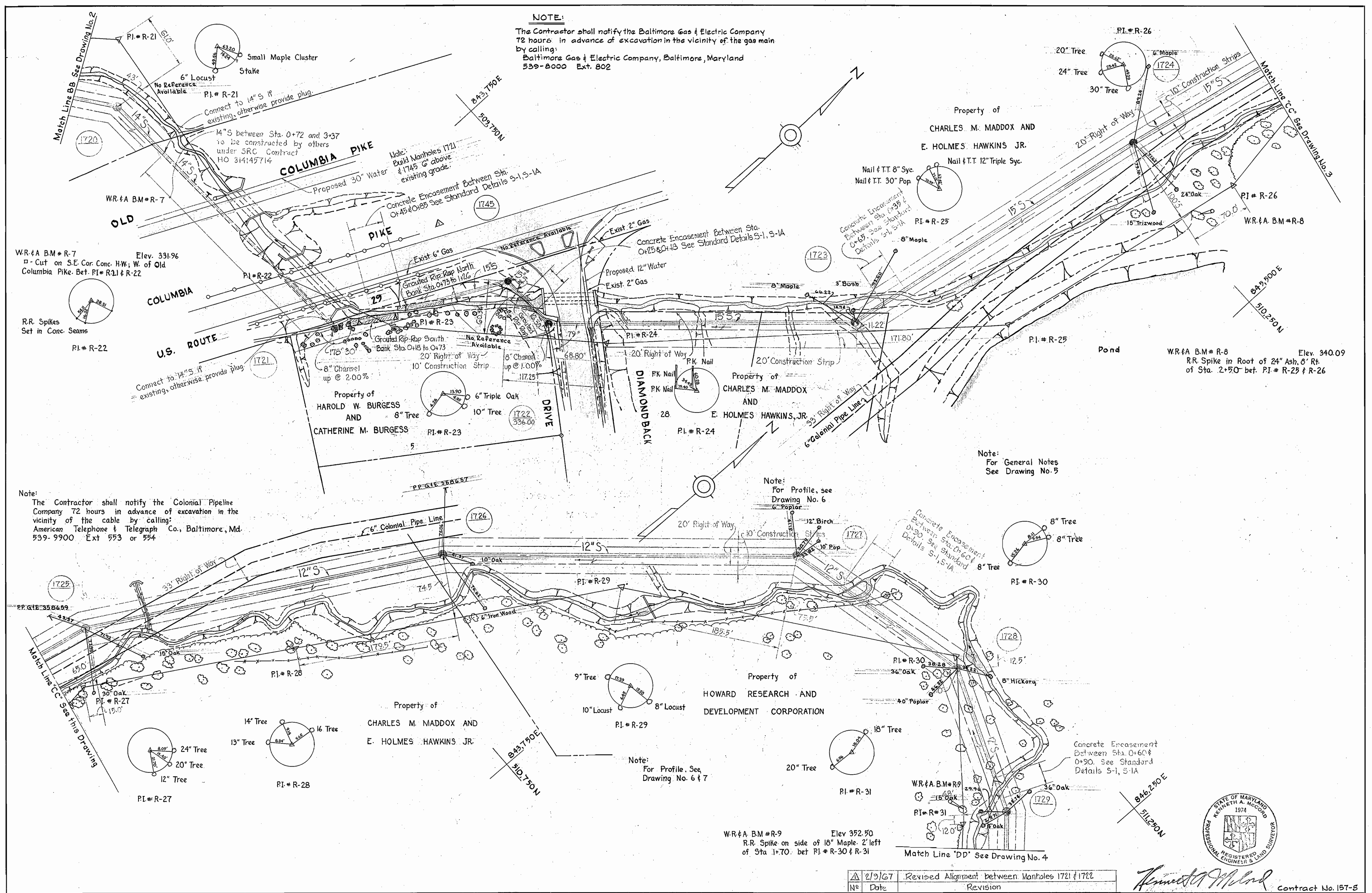
W. O. 5736-2

NOV. 20, 1968 AS BUILT

WS 157-S / 1



WS 157-S/3



**NOTE:**  
 The Contractor shall notify the Baltimore Gas & Electric Company 72 hours in advance of excavation in the vicinity of the gas main by calling:  
 Baltimore Gas & Electric Company, Baltimore, Maryland  
 539-8000 Ext. 802

WR & A B.M. # R-7 Elev. 331.96  
 Cut on S.E. Cor. Conc. H.W. of Old Columbia Pike. Bet. PI # R-1 & R-22

**Note:**  
 The Contractor shall notify the Colonial Pipeline Company 72 hours in advance of excavation in the vicinity of the cable by calling:  
 American Telephone & Telegraph Co., Baltimore, Md.  
 539-9900 Ext. 553 or 554

**Note:**  
 For Profile, see Drawing No. 6

**Note:**  
 For Profile, see Drawing No. 6 & 7

**Note:**  
 For General Notes See Drawing No. 5

2/9/67	Revised Alignment between Manholes 1721 & 1722
NS	Date
	Revision

WHITMAN, REQUARDT & ASSOCIATES ENGINEERS 1304 ST. PAUL ST. BALTIMORE, MARYLAND	HOWARD COUNTY METROPOLITAN COMMISSION 11-16-66 W. O. Silbert CHIEF ENGINEER	CONTRACT NO. 157-S	PLAN OF SEWER MAINS	EDGAR FARM INTERCEPTOR	DRAWING NO. 3 OF 7	SCALE 1" = 50'
					CONTRACT NO. 157-S	

W. O. 5736-2

NOV 20 1968

AS BUILT

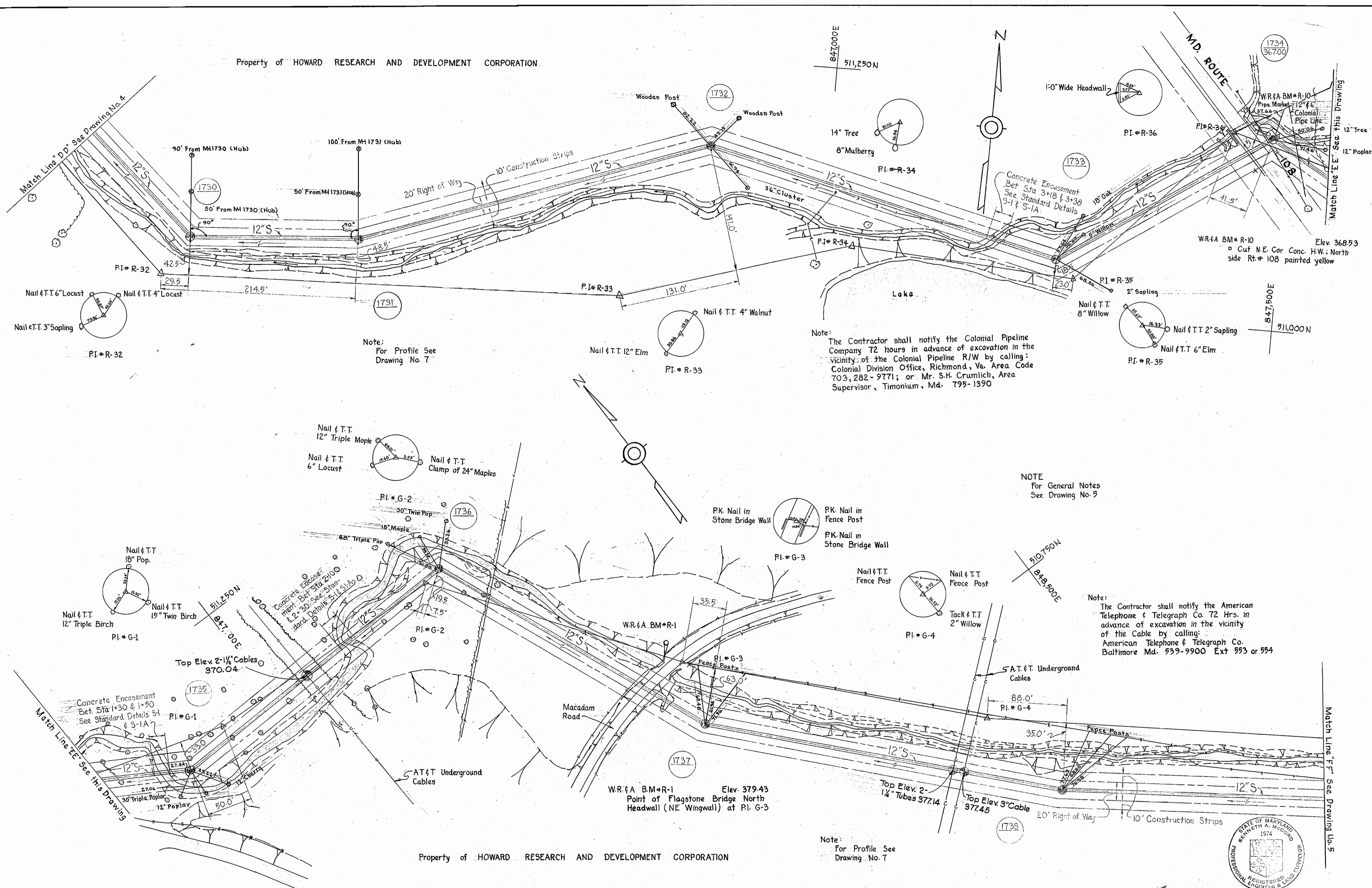


*Kenneth A. McCord*  
 Contract No. 157-S

FB # 3674 CB # 3639  
 FB # 3641 FB # 3619  
 FB # 3640 FB # 3618

WS 157-S/4

Property of HOWARD RESEARCH AND DEVELOPMENT CORPORATION.



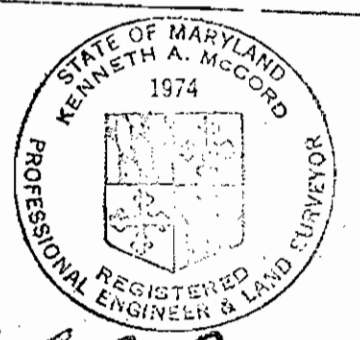
Note:  
The Contractor shall notify the Colonial Pipeline Company 72 hours in advance of excavation in the vicinity of the Colonial Pipeline R/W by calling: Colonial Division Office, Richmond, Va. Area Code 703, 282-9771; or Mr. S.H. Crumlich, Area Supervisor, Timonium, Md. 795-1990

NOTE  
For General Notes See Drawing No. 5

Note:  
The Contractor shall notify the American Telephone & Telegraph Co. 72 Hrs. in advance of excavation in the vicinity of the Cable by calling: American Telephone & Telegraph Co. Baltimore Md. 539-9900 Ext 553 or 554

Note:  
For Profile See Drawing No. 7

Property of HOWARD RESEARCH AND DEVELOPMENT CORPORATION.



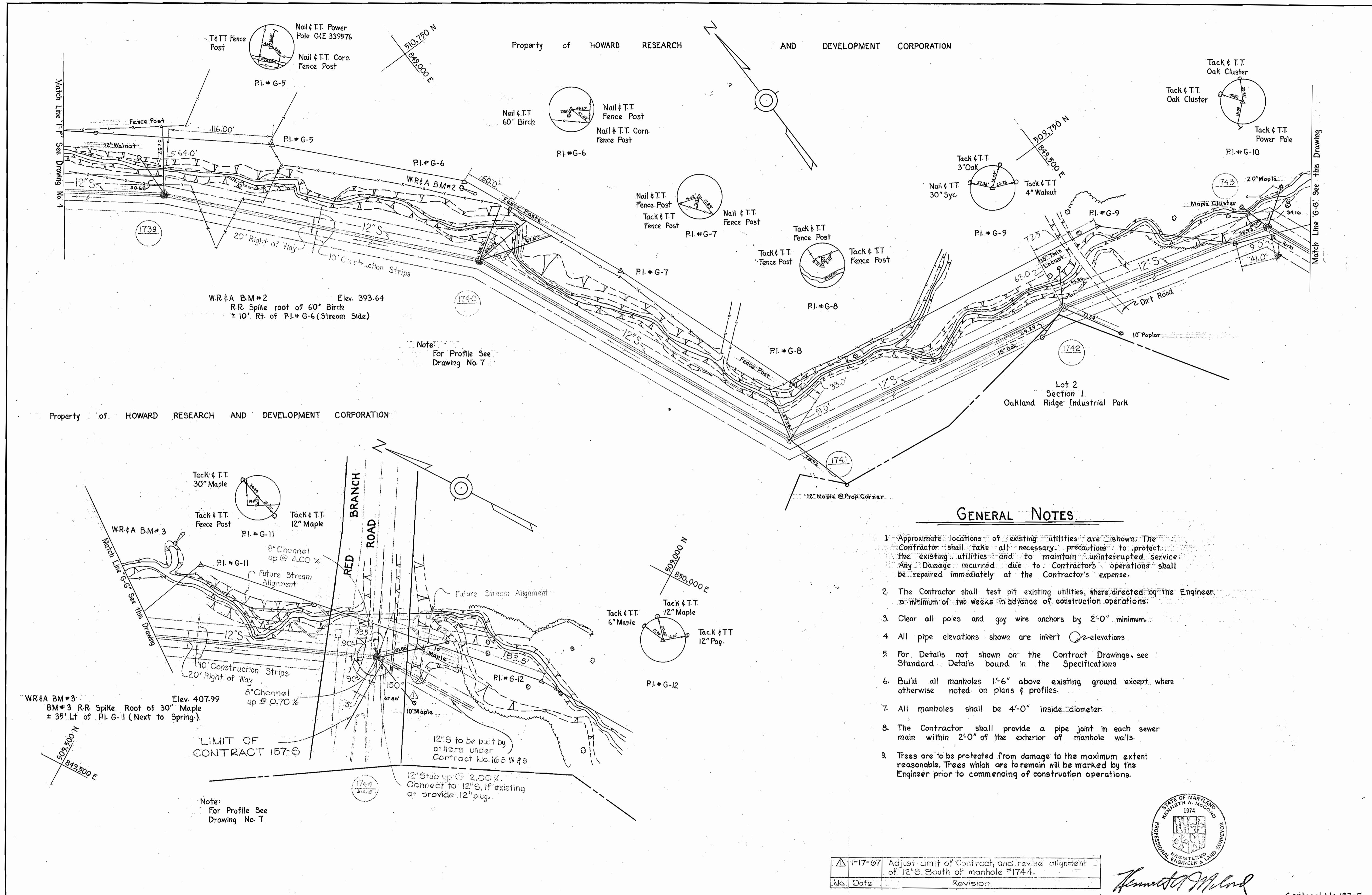
*Kenneth A. McCord* Contract No. 157-S

WHITMAN, REQUARDT & ASSOCIATES ENGINEERS 1304 ST. PAUL ST. BALTIMORE, MARYLAND	HOWARD COUNTY METROPOLITAN COMMISSION DATE <u>11-16-66</u> <i>W O L</i> CHIEF ENGINEER	CONTRACT NO. <u>157-S</u>	PLAN OF SEWER MAINS	EDGAR FARM INTERCEPTOR	DRAWING NO. <u>4</u> OF <u>7</u>	SCALE <u>1" = 50'</u>
---	--	---------------------------	------------------------	------------------------	--	--------------------------

W.O. 5736-2

NOV. 20, 1968 AS BUILT

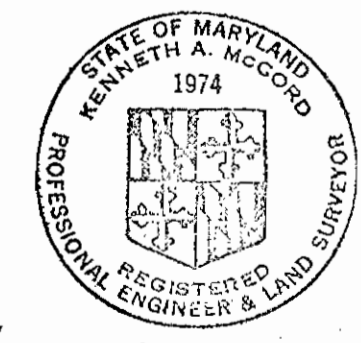
WS 157-S/5



**GENERAL NOTES**

1. Approximate locations of existing utilities are shown. The Contractor shall take all necessary precautions to protect the existing utilities and to maintain uninterrupted service. Any damage incurred due to Contractor's operations shall be repaired immediately at the Contractor's expense.
2. The Contractor shall test pit existing utilities, where directed by the Engineer, a minimum of two weeks in advance of construction operations.
3. Clear all poles and guy wire anchors by 2'-0" minimum.
4. All pipe elevations shown are invert elevations.
5. For Details not shown on the Contract Drawings, see Standard Details bound in the Specifications.
6. Build all manholes 1'-6" above existing ground except where otherwise noted on plans & profiles.
7. All manholes shall be 4'-0" inside diameter.
8. The Contractor shall provide a pipe joint in each sewer main within 2'-0" of the exterior of manhole walls.
9. Trees are to be protected from damage to the maximum extent reasonable. Trees which are to remain will be marked by the Engineer prior to commencing of construction operations.

1-17-67	Adjust Limit of Contract, and revise alignment of 12" S. South of manhole #1744.
No. Date	Revision



*Kenneth A. McCord*

Contract No. 157-S

WHITMAN, REQUARDT & ASSOCIATES ENGINEERS 1304 ST. PAUL ST. BALTIMORE, MARYLAND	HOWARD COUNTY METROPOLITAN COMMISSION DATE 11-16-66 CHIEF ENGINEER	CONTRACT NO. 157-S	PLAN OF SEWER MAINS	EDGAR FARM INTERCEPTOR	DRAWING NO. 5 OF 7	SCALE 1" = 50'
---	--	--------------------	---------------------	------------------------	--------------------	----------------

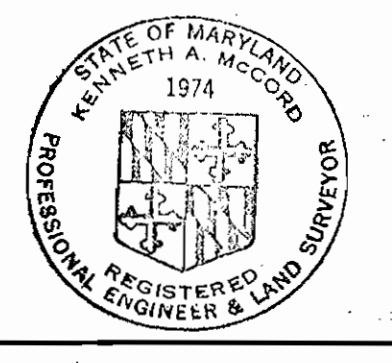
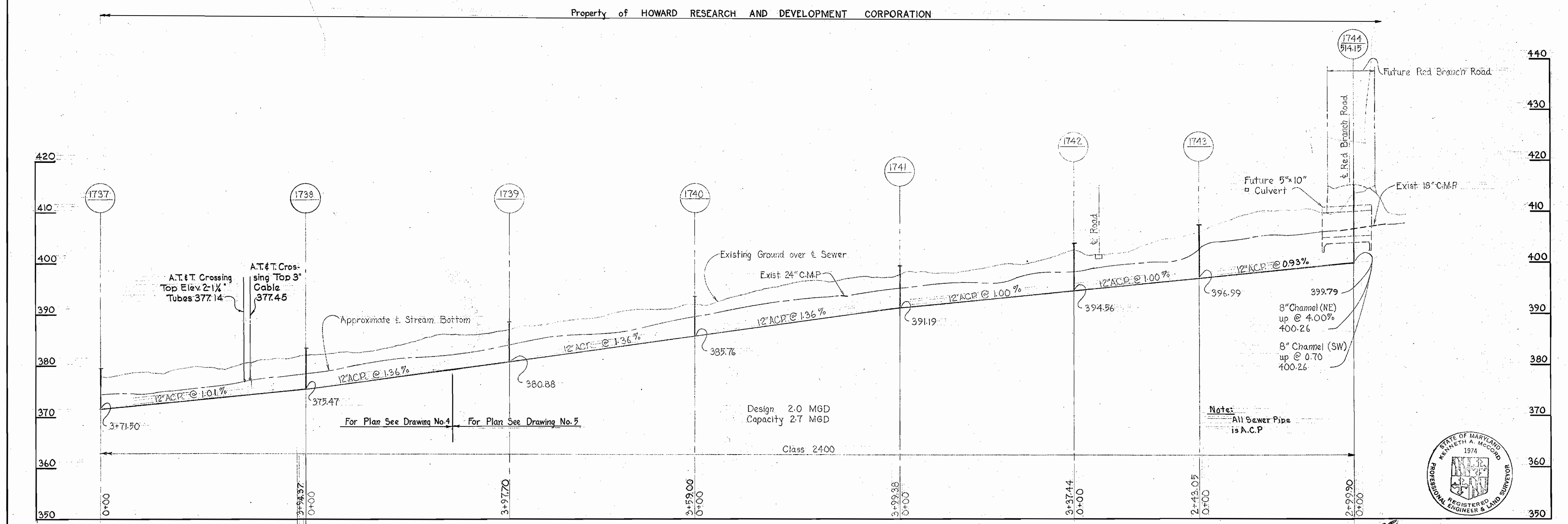
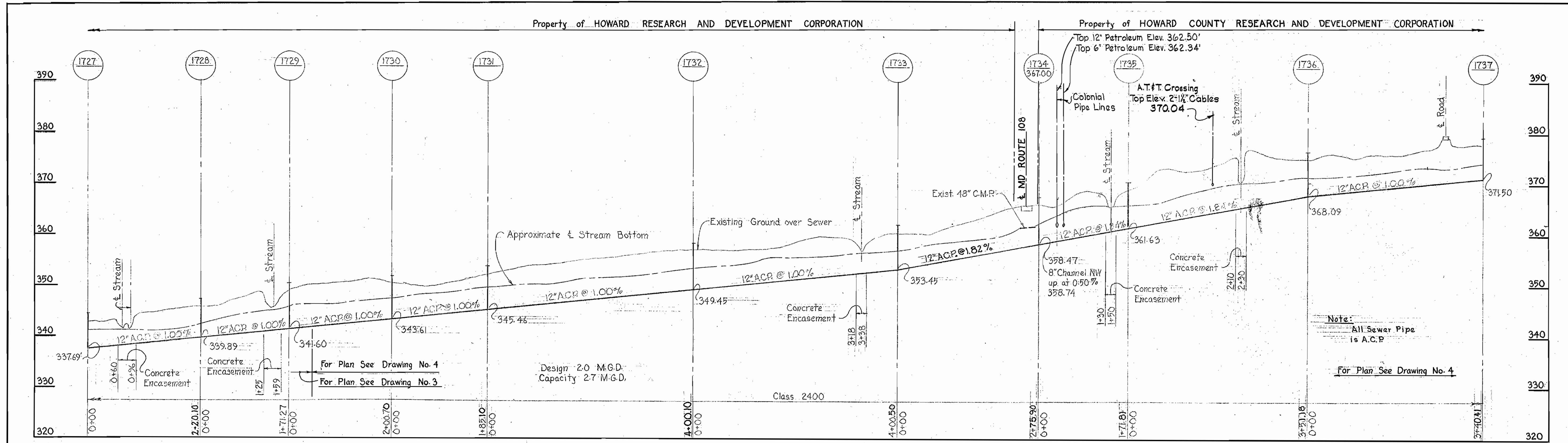
W. O. 5736-2

NOV. 20, 1968

AS BUILT



WS 157-S/7



*Kenneth A. McCord*  
Contract: 157-S

WHITMAN, REQUARDT & ASSOCIATES ENGINEERS 1304 ST. PAUL ST. BALTIMORE, MARYLAND	HOWARD COUNTY METROPOLITAN COMMISSION DATE: 11-16-66 CHIEF ENGINEER: <i>W. O. Elliott</i>	CONTRACT NO. 157-S	PROFILE OF SEWER MAINS	EDGAR FARM INTERCEPTOR	DRAWING NO. 7 OF 7 SCALE: H. 1"=100' V. 1"=10'
---	---	--------------------	------------------------	------------------------	---