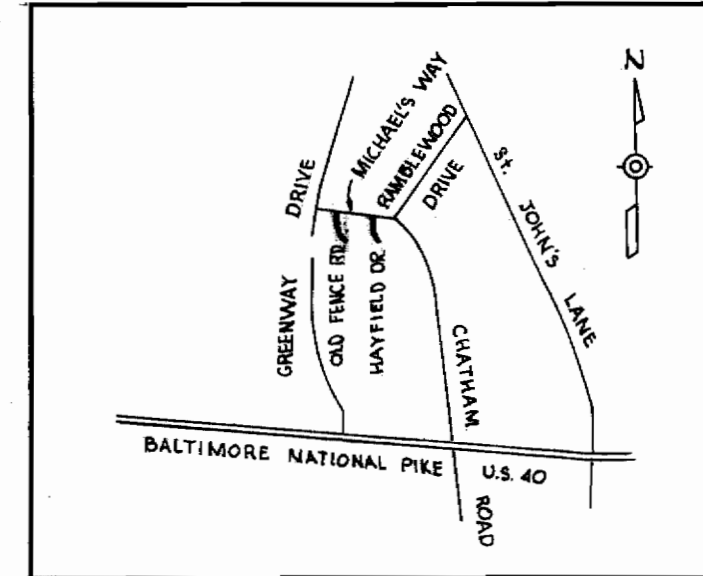


PLAN
Scale: 1"=50'

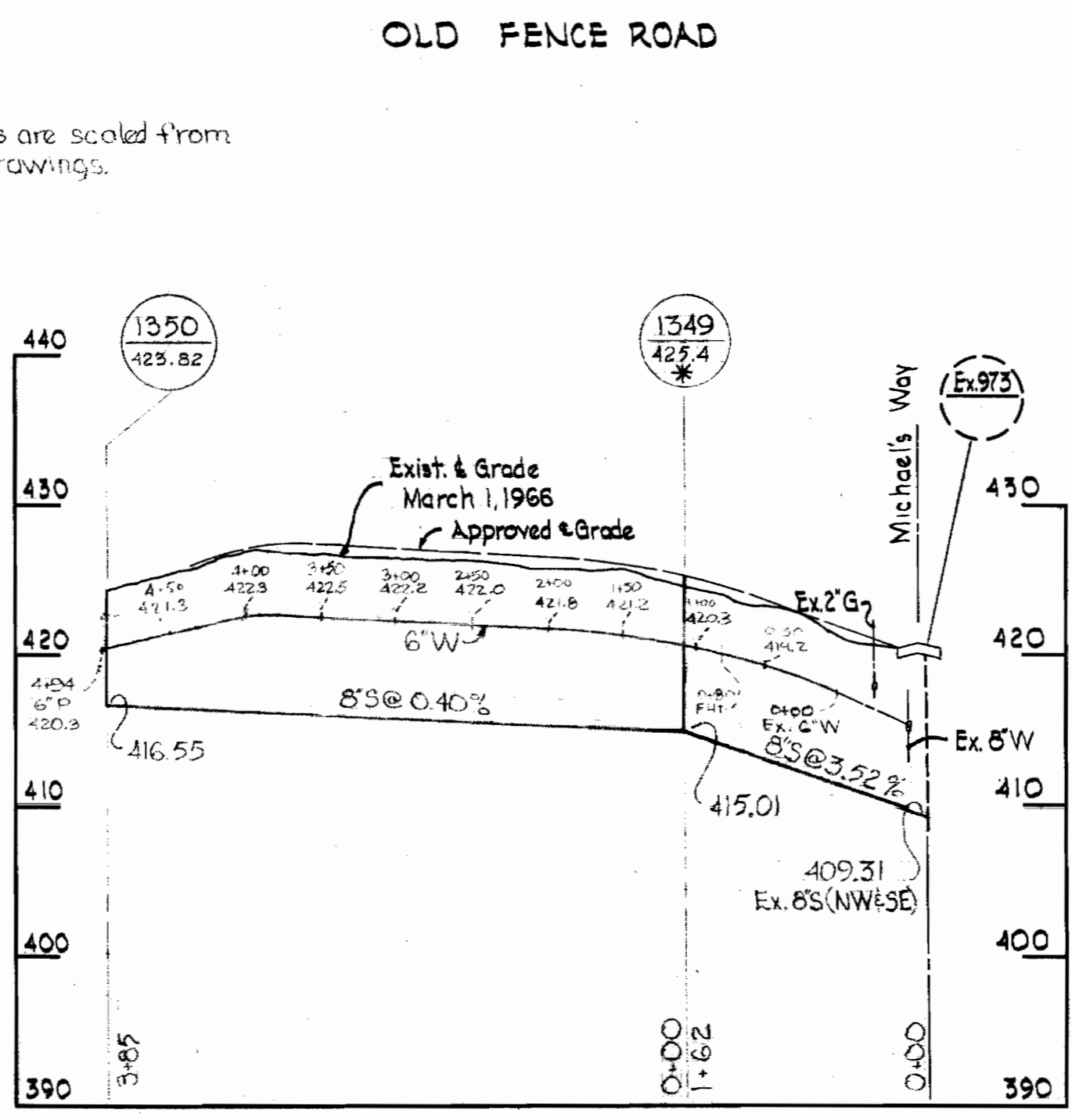
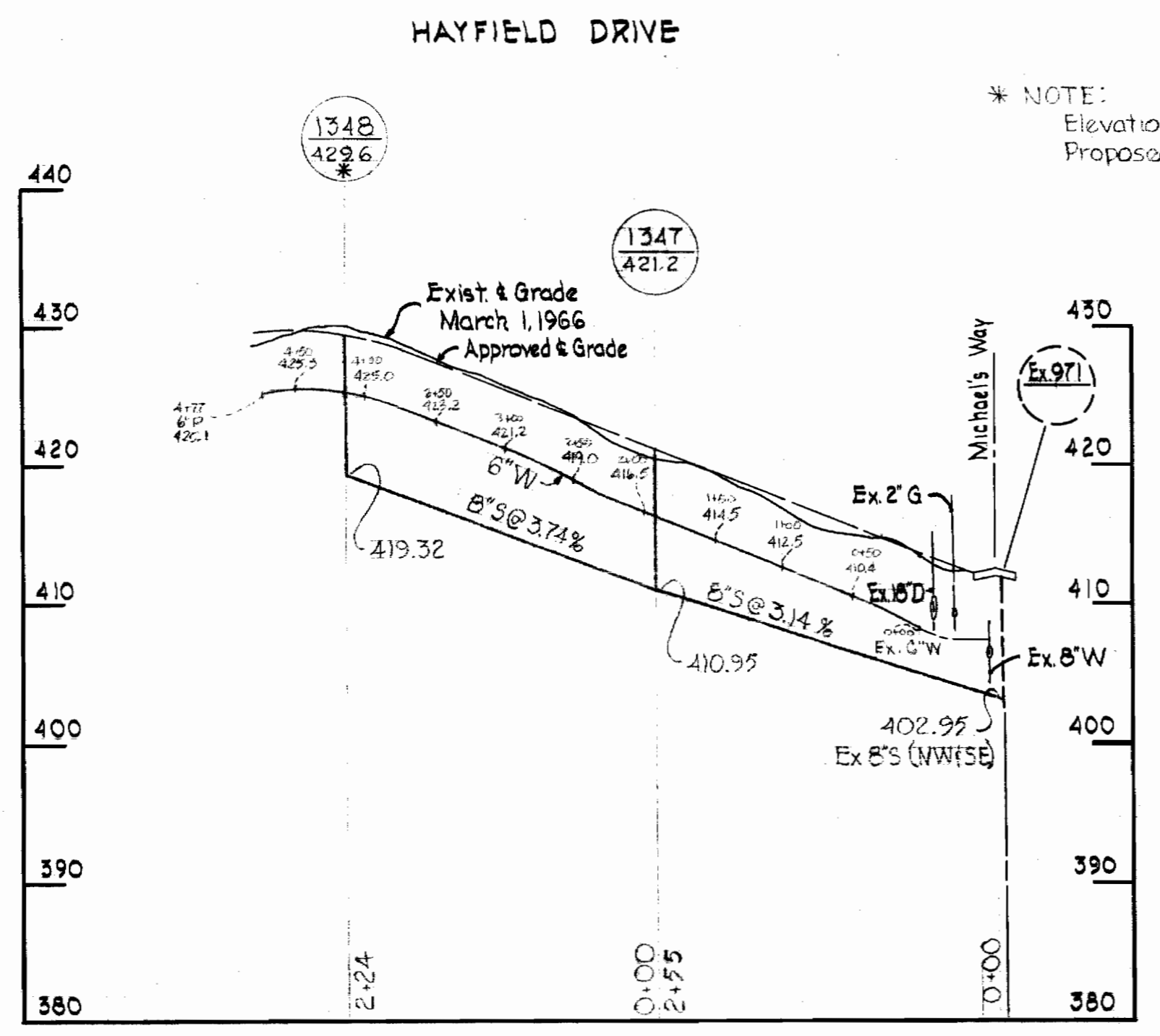
W.R.I.A. B.M. # 39-A Elev. 416.07'
R.R. Spike in base of Oak 130' N. of
intersection of Ramblewood Rd. &
Ramsey Dr. W. side of Ramblewood Rd.

W.R.I.A. B.M. # 41-B Elev. 433.48'
X-Cut roadside flange bolt fire
hydrant E. side Greenway Dr. 1800'
S. of St. John's Lane.



LOCATION MAP
Scale: 1"=1/2 mile

* NOTE:
Elevations for tops of M.H.s are scaled from
Proposed Road Grade Drawings.



PROFILE
Scale: Hor: 1"=100'
Vert: 1"=10'

GENERAL NOTES

1. Approximate location of existing mains are shown. The Contractor shall take all necessary precautions to protect existing mains and services and maintain uninterrupted supply. Any damage incurred shall be repaired immediately.
2. All pipe elevations shown are invert elevations.
3. The Contractor shall locate existing utilities a minimum of two weeks in advance of construction operations in vicinity of utilities.
4. For all standard details see Standards bound in Specifications.
5. All water mains to be C.I.P. Class 22 and have a minimum of 3 1/2' cover.
6. Block all fittings with concrete, see Standards bound in Specifications.
7. Bury line elevation on fire hydrant shall be set the same as edge of paving or as directed by the Engineer in the field.
8. Buttress fire hydrant with concrete; provide copper pipe at weep holes as required for positive drainage. For Buttress dimensions see standard details W-8 Buttress for Caps.
9. Clear all poles by 2'-0" minimum or tunnel as required. Clear all existing utilities by 6" minimum.
10. All sewers shall be V.C.P.X., C.S.P.X. or Asbestos Cement Class 2400 unless otherwise noted.



James M. Wood
Chatham Section 4
Contract No. 139 W&S

WHITMAN, REQUARDT & ASSOCIATES
ENGINEERS
1304 ST. PAUL ST.
BALTIMORE, MARYLAND

HOWARD COUNTY METROPOLITAN COMMISSION
DATE: 3-3-66
W. O. Libbert
CHIEF ENGINEER

CONTRACT NO. 139 W&S

PLAN AND PROFILE OF
WATER AND SEWER MAINS

ELLCOTT CITY SUB-DISTRICT

DRAWING NO. 1 OF 1 SCALE AS SHOWN

WS 139 W&S/1