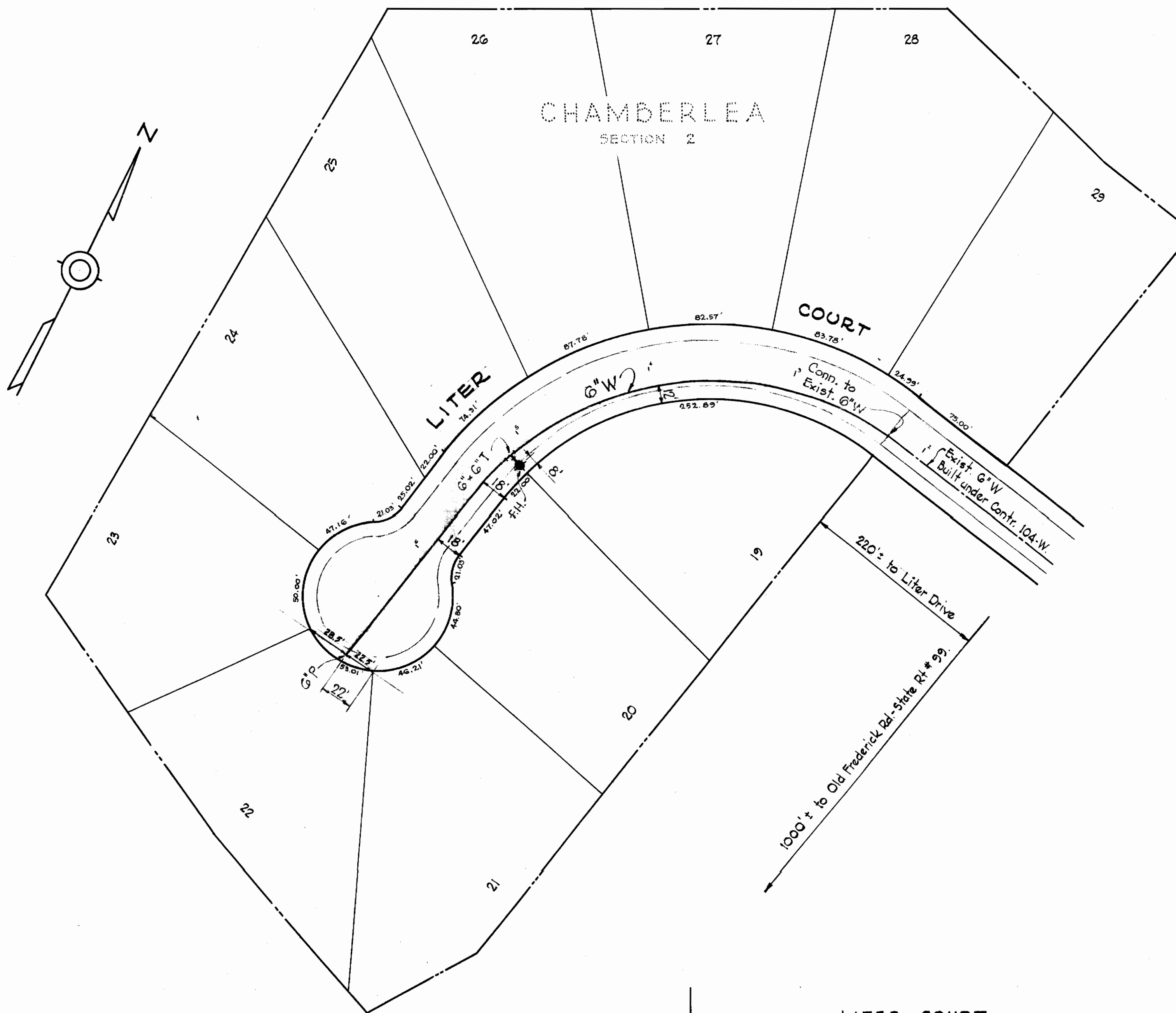
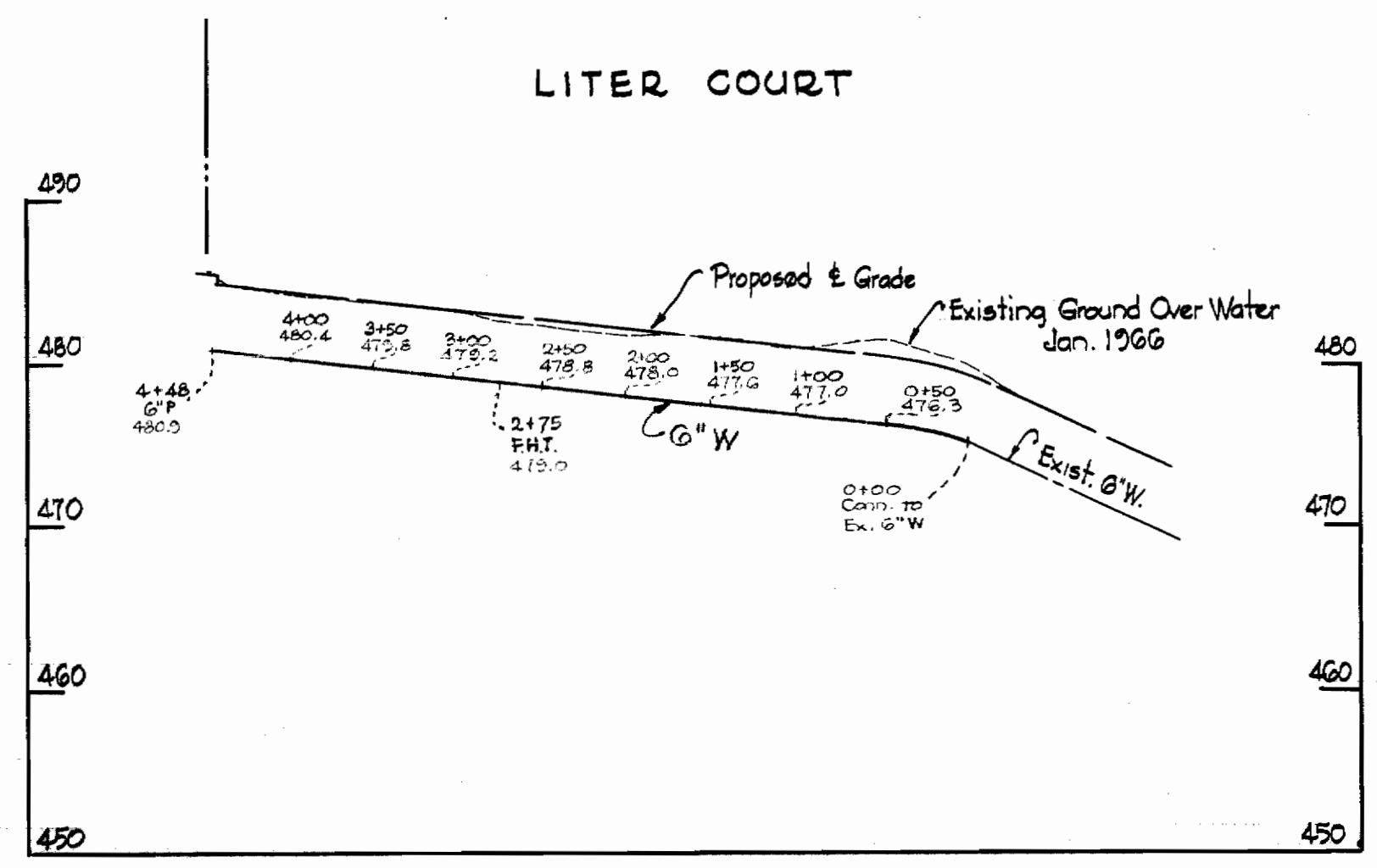


GENERAL NOTES

1. Approximate location of existing mains are shown. The Contractor shall take all necessary precautions to protect existing mains and services and maintain uninterrupted supply. Any damage incurred shall be repaired immediately.
2. All pipe elevations shown are invert \ominus elevations.
3. The Contractor shall locate existing utilities a minimum of two week in advance of construction operations in vicinity of utilities.
4. For all standard details see Standard bound in Specifications.
5. All water mains to be C.I.P. Class 22 and have a minimum of 3/2' cover.
6. Block all fitting with concrete, see standard details bound in Specifications.
7. Bury line elevation on fire hydrant shall be set the same as edge of paving or as directed by the Engineer in the field.
8. Buttress fire hydrants with concrete; provide copper pipe at weep holes as required for positive drainage. For Buttress dimensions see standard detail W-8 Buttress for Caps.
9. Clear all poles by 2'0" minimum or tunnel as required. Clear all existing utilities by 6" minimum.



PLAN
Scale: 1" = 50'



PROFILE
Scale: H: 1" = 100'
V: 1" = 10'

Handwritten Signature
Chamberlea - Section 2.
Contract N# 138-W.

WHITMAN, REQUARDT & ASSOCIATES
ENGINEERS
1304 ST. PAUL ST.
BALTIMORE, MARYLAND

HOWARD COUNTY METROPOLITAN COMMISSION
DATE: 1-25-66
Handwritten Signature
CHIEF ENGINEER

CONTRACT NO. 138-W

PLAN AND PROFILE OF
WATER MAINS

ELLICOTT CITY SUB-DISTRICT

DRAWING NO. 1 OF 1 SCALE AS SHOWN

WS 138-W/1