

CONTRACT 135-W
WATER MAIN EXTENSIONS
HOWARD COUNTY METROPOLITAN COMMISSION
ELLICOTT CITY, MARYLAND



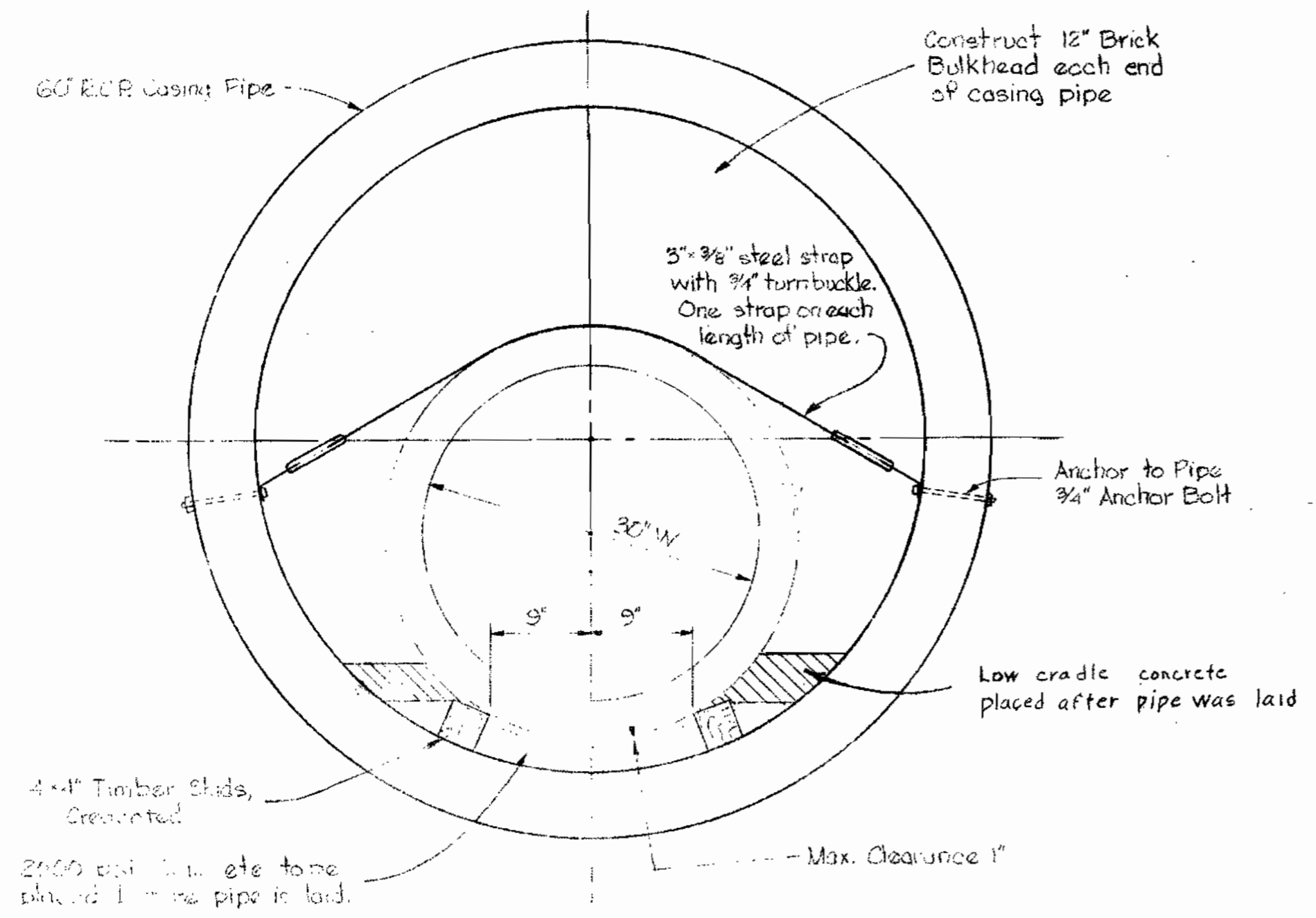
Contract No. 135-W

WHITMAN, REQUARDT & ASSOCIATES ENGINEERS 1304 ST. PAUL ST. BALTIMORE, MARYLAND	HOWARD COUNTY METROPOLITAN COMMISSION DATE <u>11-15-66</u> <i>W. O. L. [Signature]</i> CHIEF ENGINEER	CONTRACT NO. <u>135-W</u>	LOCATION MAP OF WATER MAIN EXTENSIONS	ELECTION DISTRICTS ELLICOTT CITY NO. 2, CLARKSVILLE NO. 5, & GUILFORD NO. 6	DRAWING NO. <u>1</u> OF <u>8</u>	SCALE AS SHOWN
---	---	---------------------------	--	---	--	----------------------

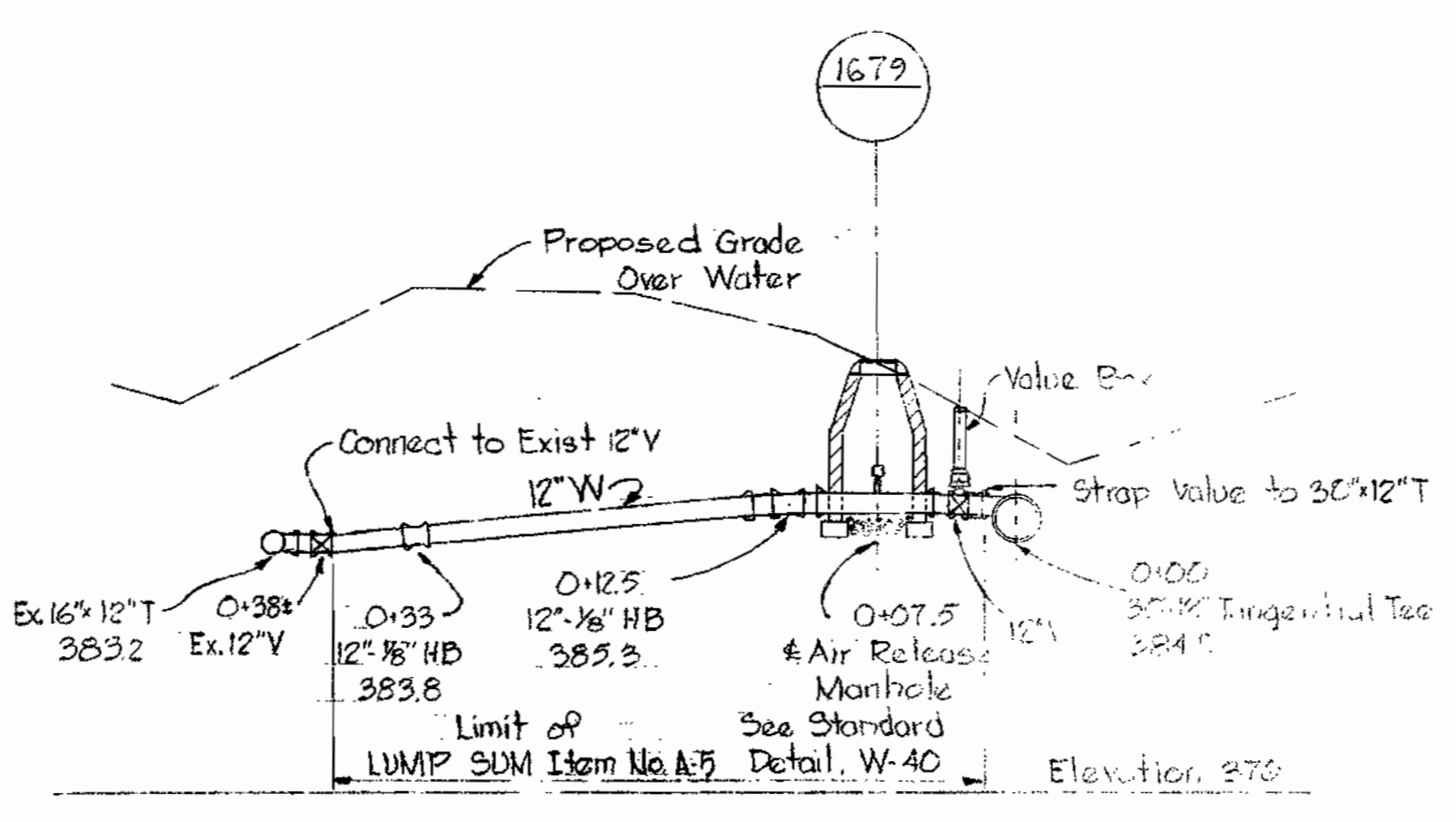
AS BUILT JUNE 14, 1968

W. O. 5562-2

WS 135-W/1



DETAIL 60" CASING PIPE
Scale: 1"=1'

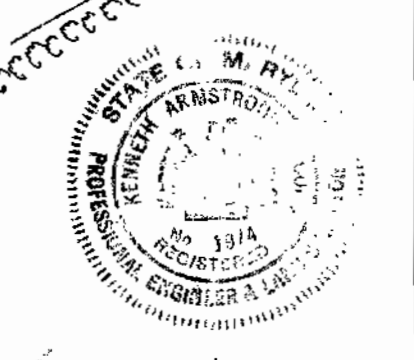
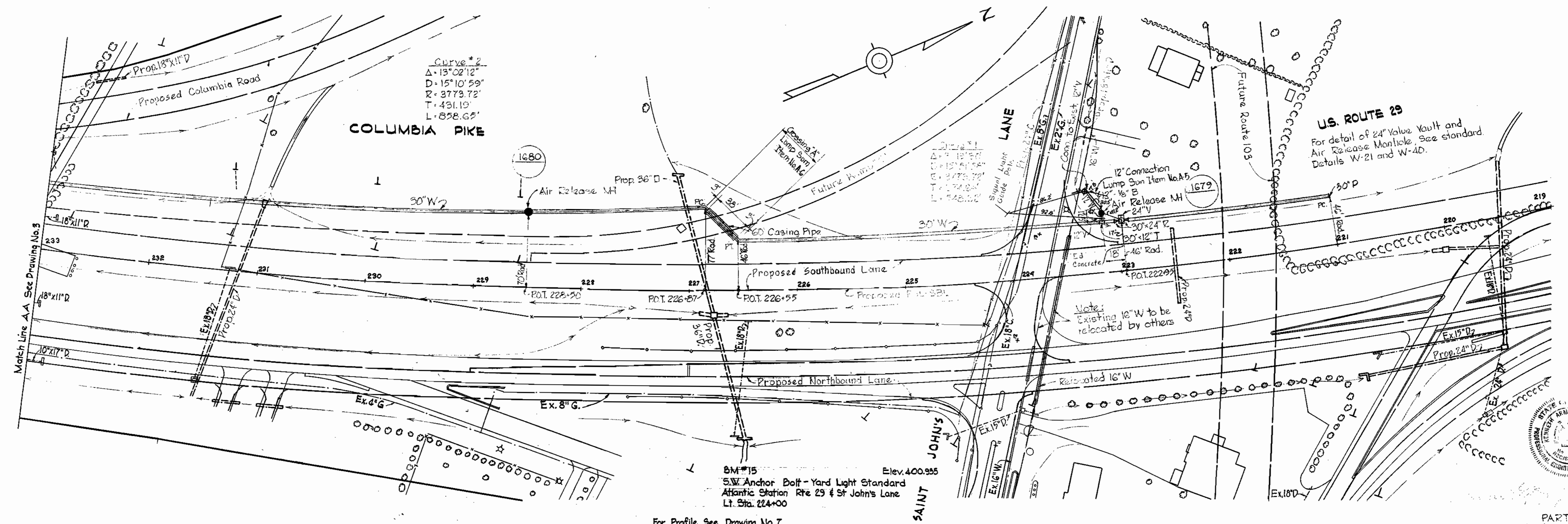


PROFILE OF CONNECTION TO EXISTING 16" W
LUMP SUM ITEM NO. A-5
Scale: 1"=10'

Note:
All Vertical and Horizontal controls are based on Maryland State Roads system.

GENERAL NOTES

1. Approximate location of existing mains are shown. The Contractor shall take all necessary precaution to protect existing mains and services and maintain uninterrupted supply. Any damage incurred shall be repaired immediately.
2. All pipe elevations shown are invert elevations.
3. The Contractor shall locate existing utilities a minimum of two weeks in advance of construction operations in vicinity of utilities.
4. For all standard details see standards bound in Specifications.
5. Block all fittings with concrete, see standard details bound in Specifications.
6. Bury line elevation on fire hydrants shall be set the same as edge of paving or as directed by the Engineer in the field.
7. Buttress fire hydrants with concrete; provide copper pipe at weep holes as required for positive drainage. For Buttress dimensions see standard detail W-8 Buttress for Caps.
8. The Contractor shall notify the Telephone Company prior to any construction activities in the vicinity of the telephone cables by calling collect anytime Lexington 9-9900 Ext. 553, 554 or 555 in Baltimore, Maryland.
9. All water mains shall be as follows: 3" C.I.P., 6" to 12" C.I.P. or D.I.P. and 30" D.I.P. or Concrete Pressure Pipe and shall have a minimum cover of 3.5'.
10. Cost of strapping valves to 30" W shall be included in the unit price bid for furnishing and laying of water mains.
11. All Air Release Manholes on 30" water main shall be 5'-0" Diameter.
12. Clear all utilities by 9' minimum.



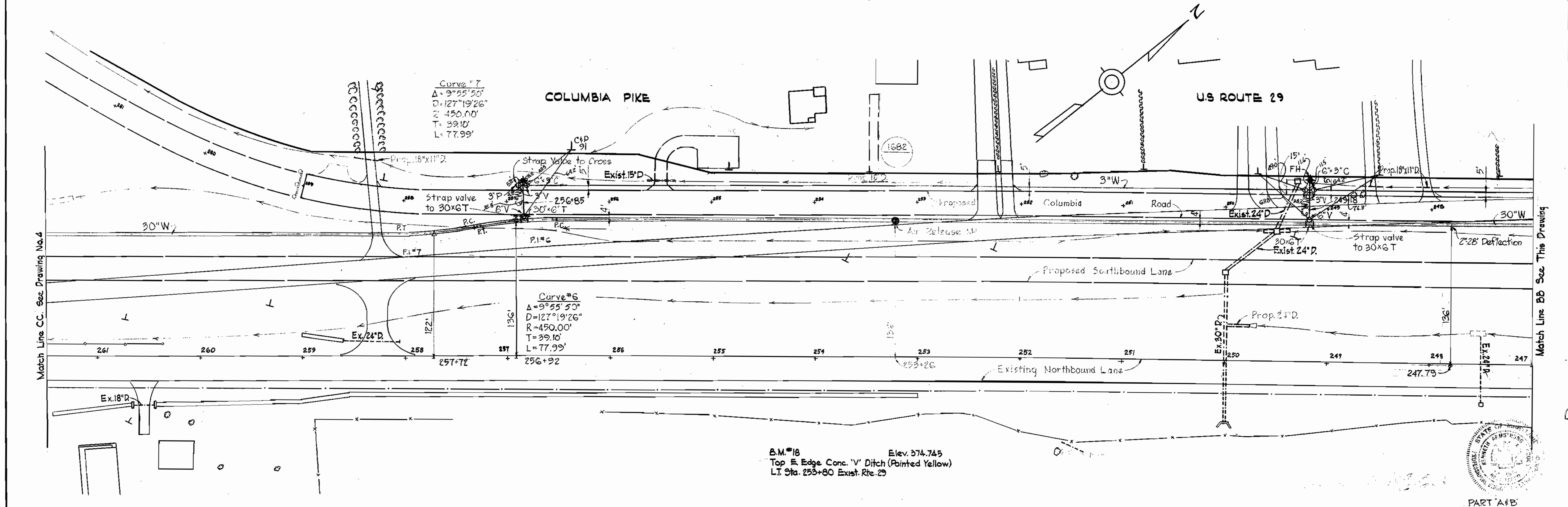
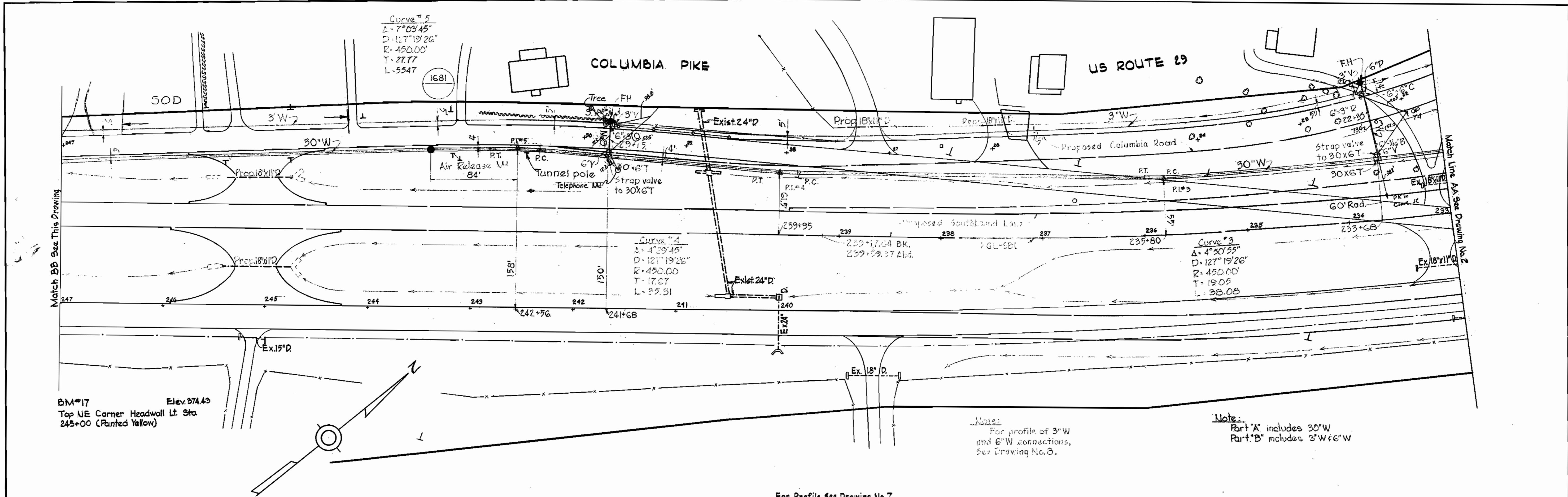
WS 135-W/2

WHITMAN, REQUARDT & ASSOCIATES ENGINEERS 1304 ST. PAUL ST. BALTIMORE, MARYLAND	HOWARD COUNTY METROPOLITAN COMMISSION 1115-66 DATE	CONTRACT NO. 135-W	PLAN OF WATER MAINS	ELECTION DISTRICTS ELLCOTT CITY NO.2, CLARKSVILLE NO.5, & GUILFORD NO.6	DRAWING NO. 2 OF 8	SCALE 1" = 50'
---	--	--------------------	------------------------	---	--------------------------	-------------------

W. 0.5562-2

AS BUILT JUNE 14, 1968

WS 135-W/3



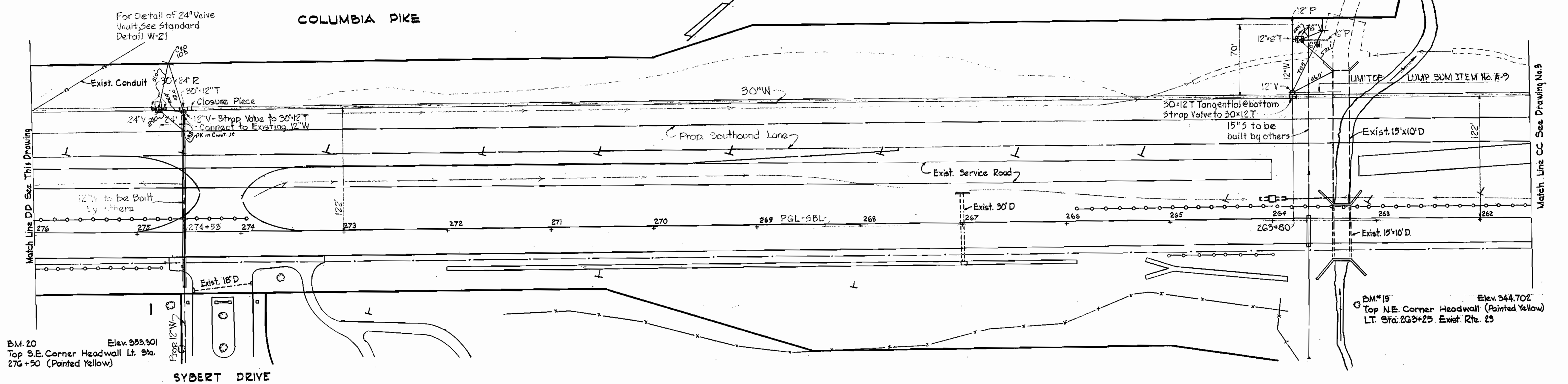
WHITMAN, REQUARDT & ASSOCIATES ENGINEERS 1304 ST. PAUL ST. BALTIMORE, MARYLAND	HOWARD COUNTY METROPOLITAN COMMISSION DATE: 11.15.66 W. O. Silbert CHIEF ENGINEER	CONTRACT NO. 135-W	PLAN OF WATER MAINS	ELECTION DISTRICTS ELLICOTT CITY NO. 2, CLARKSVILLE NO. 5, & GUILFORD NO. 6	DRAWING NO. 3 OF 8 SCALE 1" = 50' PART A & B Contract No. 135-W
---	--	--------------------	------------------------	---	--

W. O. 5562-2

AS BUILT JUNE 14, 1968

Note:
Cost of valve and connection to existing 12"W to be included in the unit price bid for furnishing and laying of 30"W.

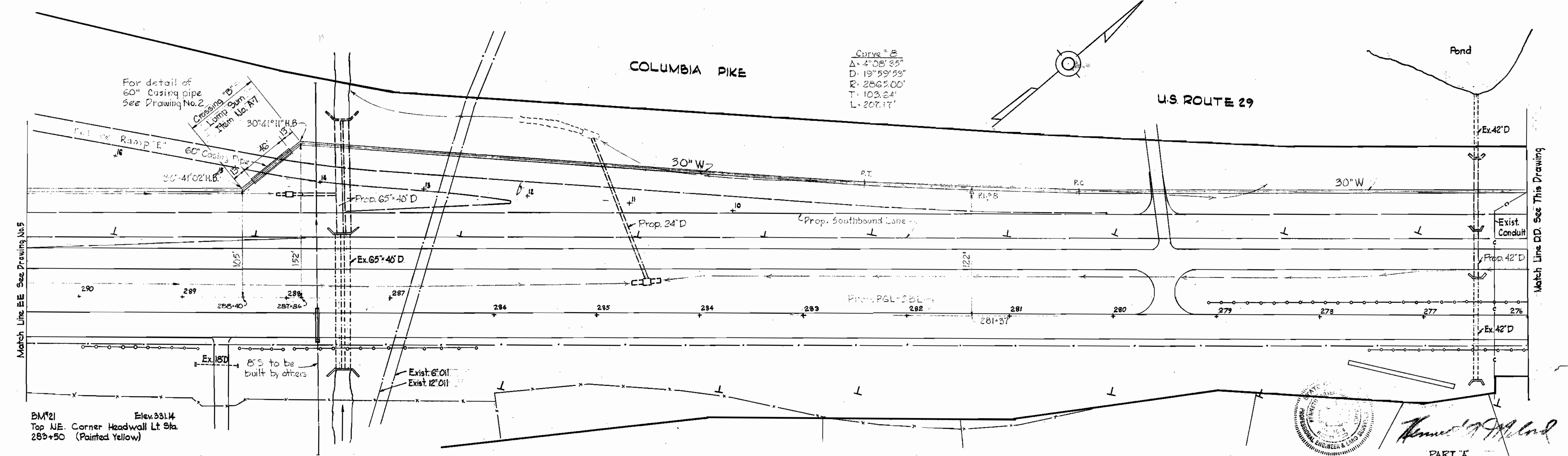
Note:
For profile of 12"W and detail of 6" Blow-off see Drawing No. 6



B.M. 20 Elev. 333.901
Top S.E. Corner Headwall Lt. Sta. 276+50 (Painted Yellow)

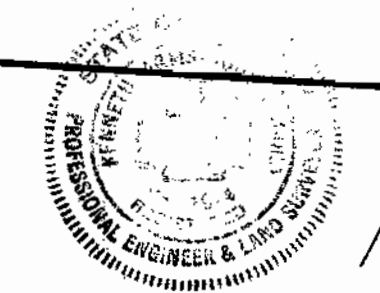
B.M. 15 Elev. 344.702
Top N.E. Corner Headwall (Painted Yellow)
LT. Sta. 263+25 Exist. Rte. 29

For Profile See Drawing No. 7.



B.M. 21 Elev. 331.14
Top N.E. Corner Headwall Lt. Sta. 289+50 (Painted Yellow)

PART 'A'
Contract No. 135-W



Howard J. ...
Chief Engineer

WHITMAN, REQUARDT & ASSOCIATES
ENGINEERS
1304 ST. PAUL ST.
BALTIMORE, MARYLAND

HOWARD COUNTY METROPOLITAN COMMISSION
DATE 11-15-66
W. O. ...
CHIEF ENGINEER

CONTRACT NO. 135-W

PLAN OF
WATER MAINS

ELECTION DISTRICTS
ELLCOTT CITY NO. 2, CLARKSVILLE NO. 5,
& GUILFORD NO. 6

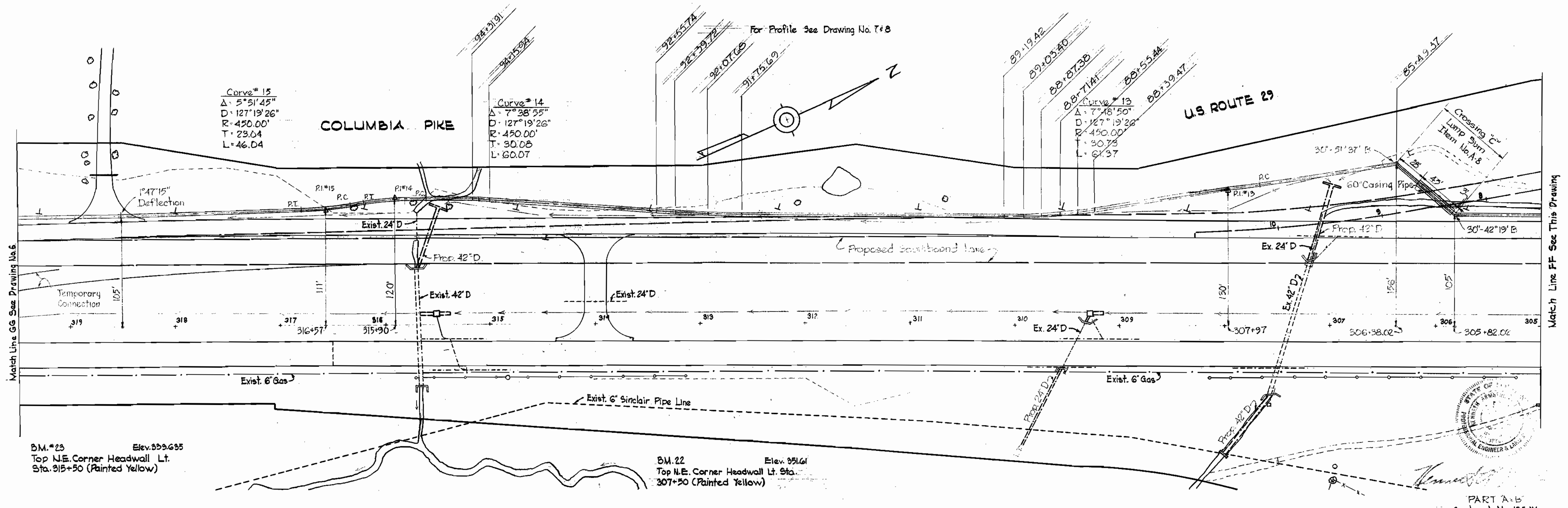
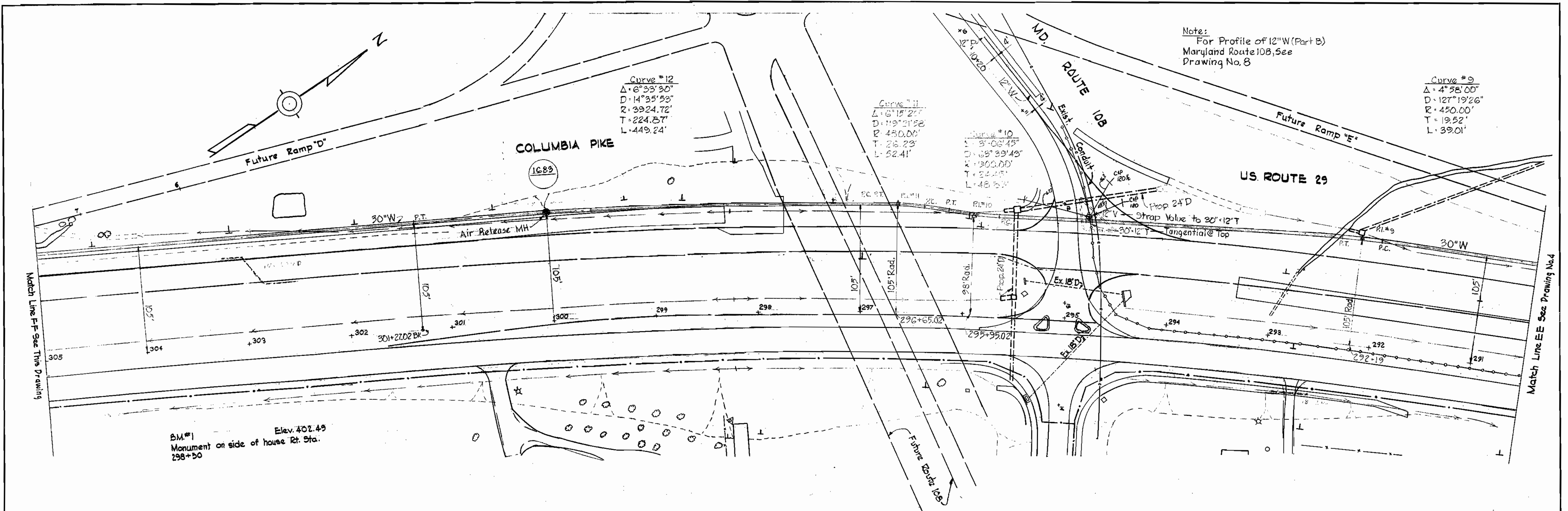
DRAWING NO. 4 OF 8
SCALE 1" = 50'

AS BUILT JUNE 14, 1968

W. O. 5562-2

WS 135-W/4

WS 135-w/5



WHITMAN, REQUARDT & ASSOCIATES
ENGINEERS
1304 ST. PAUL ST.
BALTIMORE, MARYLAND

HOWARD COUNTY METROPOLITAN COMMISSION
DATE: 02.15.66
W. O. Sillitoe
CHIEF ENGINEER

CONTRACT NO. 135-W

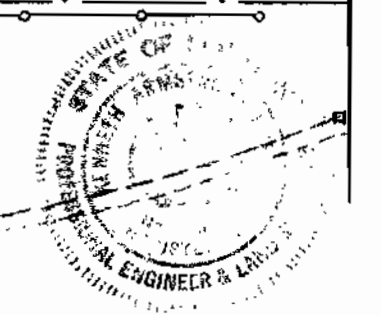
PLAN OF
WATER MAINS

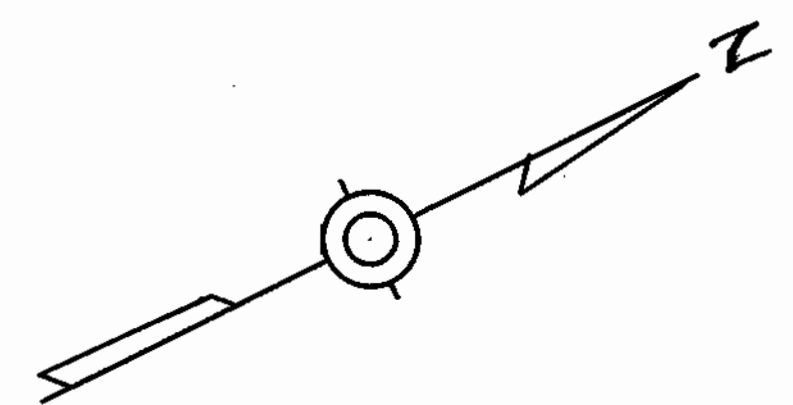
ELECTION DISTRICTS
ELLCOTT CITY NO.2, CLARKSVILLE NO.5,
& GUILFORD NO.6

DRAWING NO. 5 OF 8
SCALE 1" = 50'

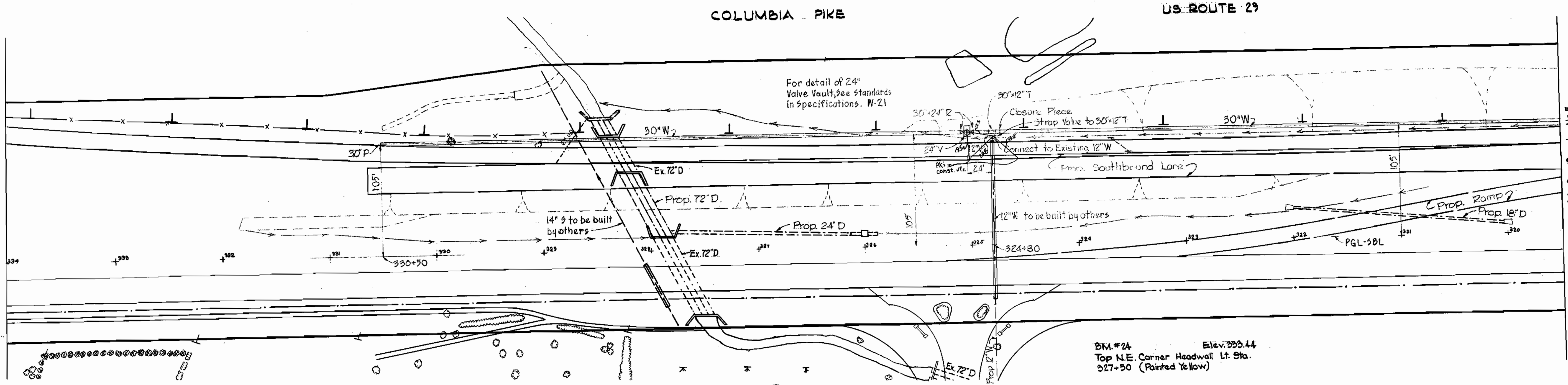
W. O. 5562-2

PART A-B
Contract No. 135-W
AS BUILT JUNE 14, 1968



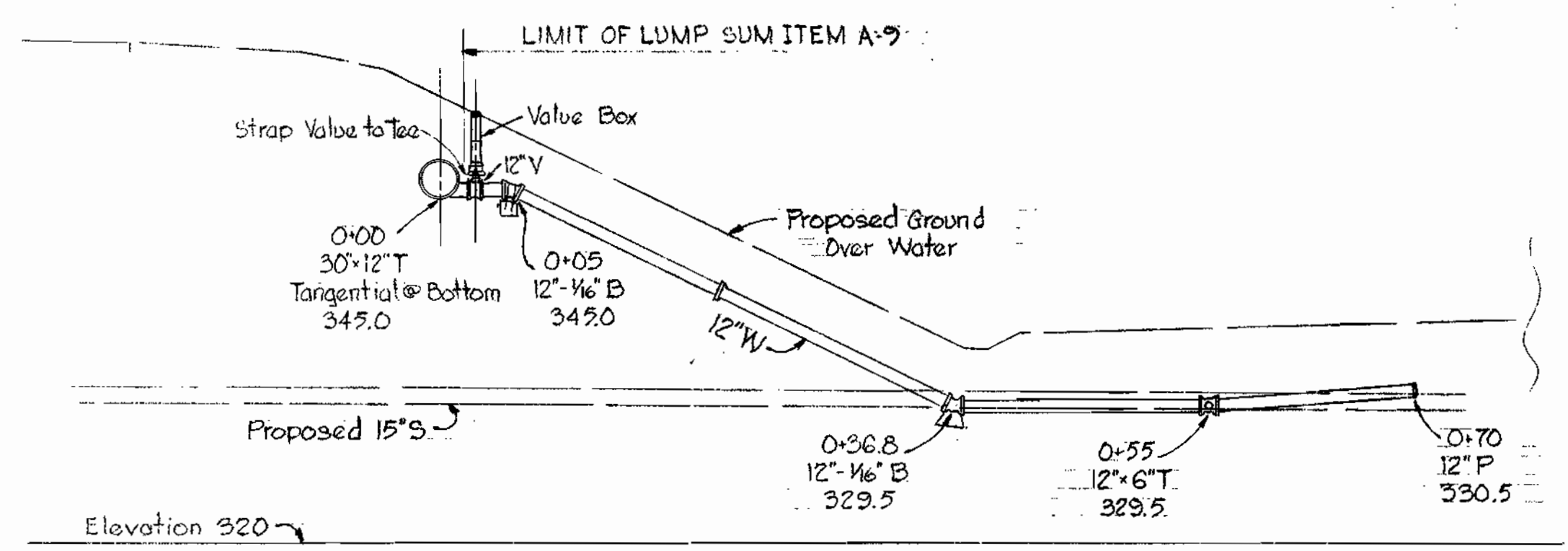


Note:
Cost of Valve and connection to existing 12" W to be included in the unit price bid for furnishing and laying of 30" W.

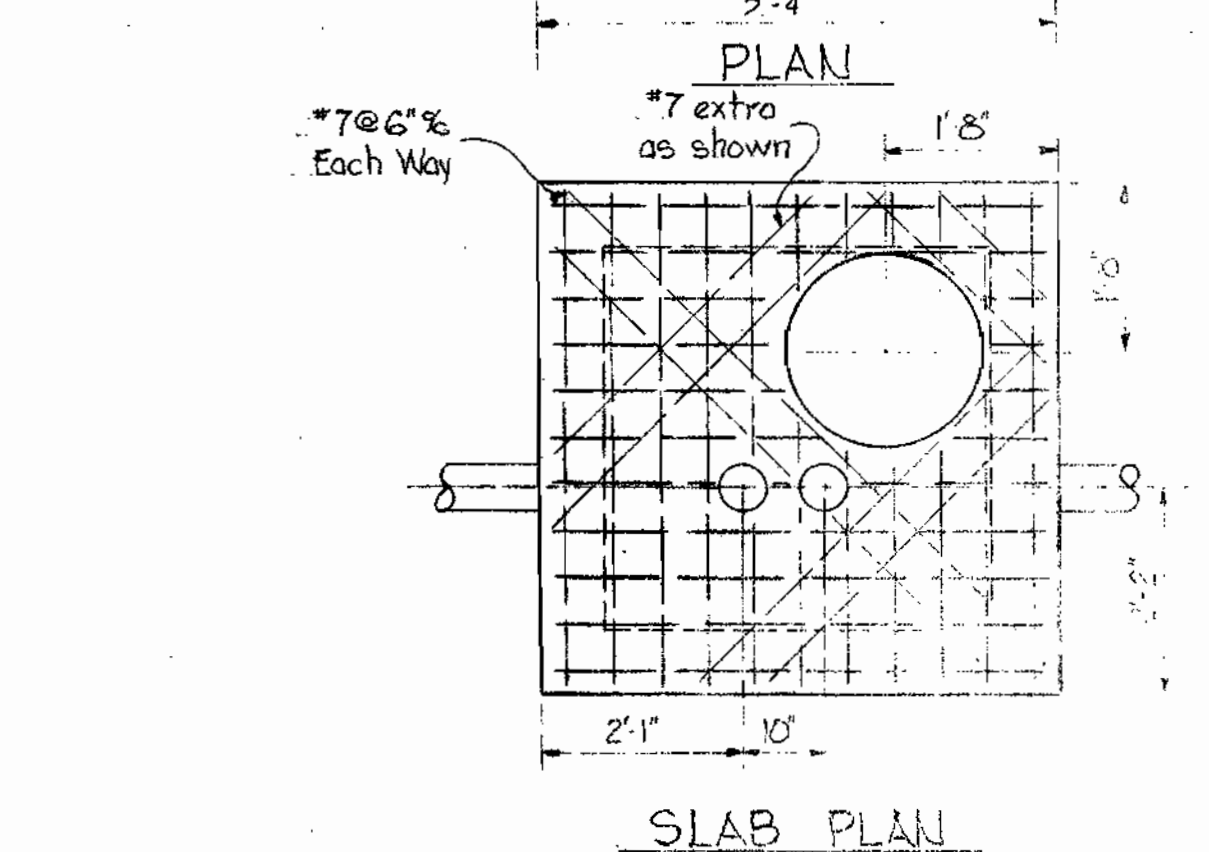
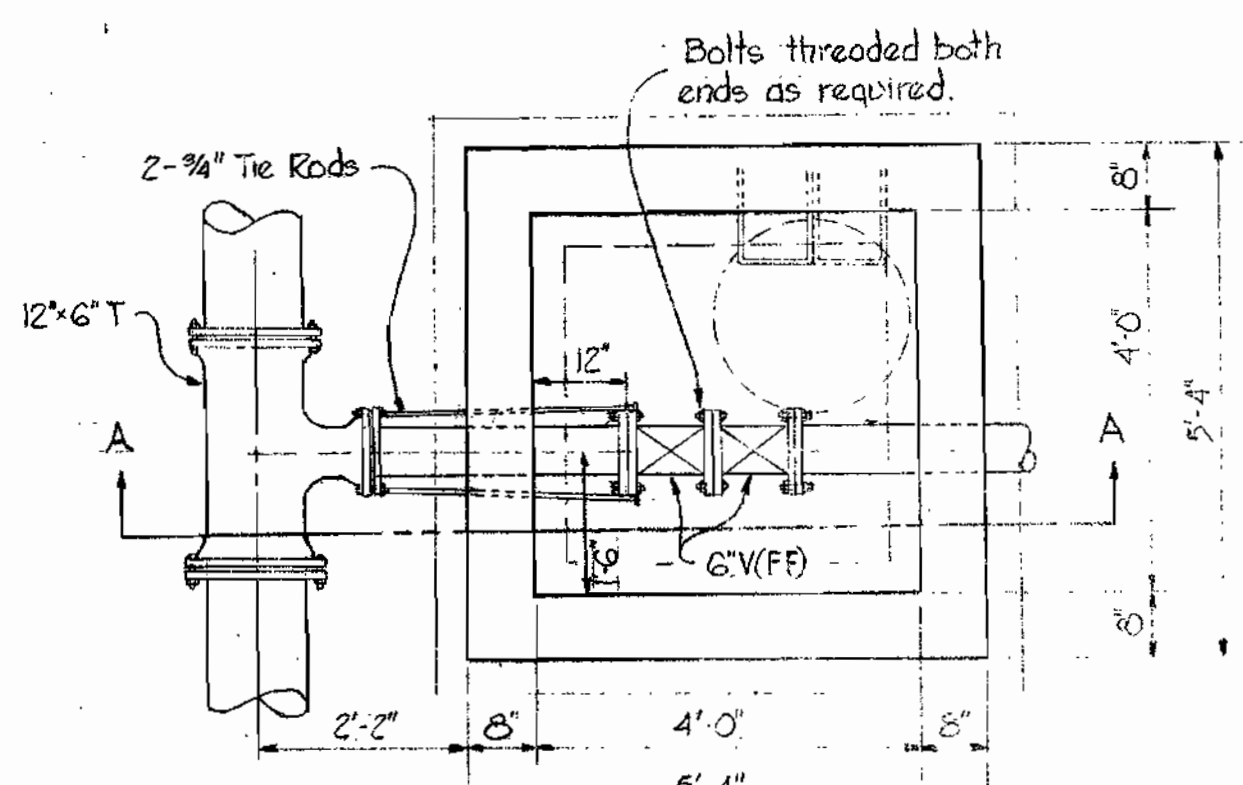


Match Line G.G. See Drawing No. 5

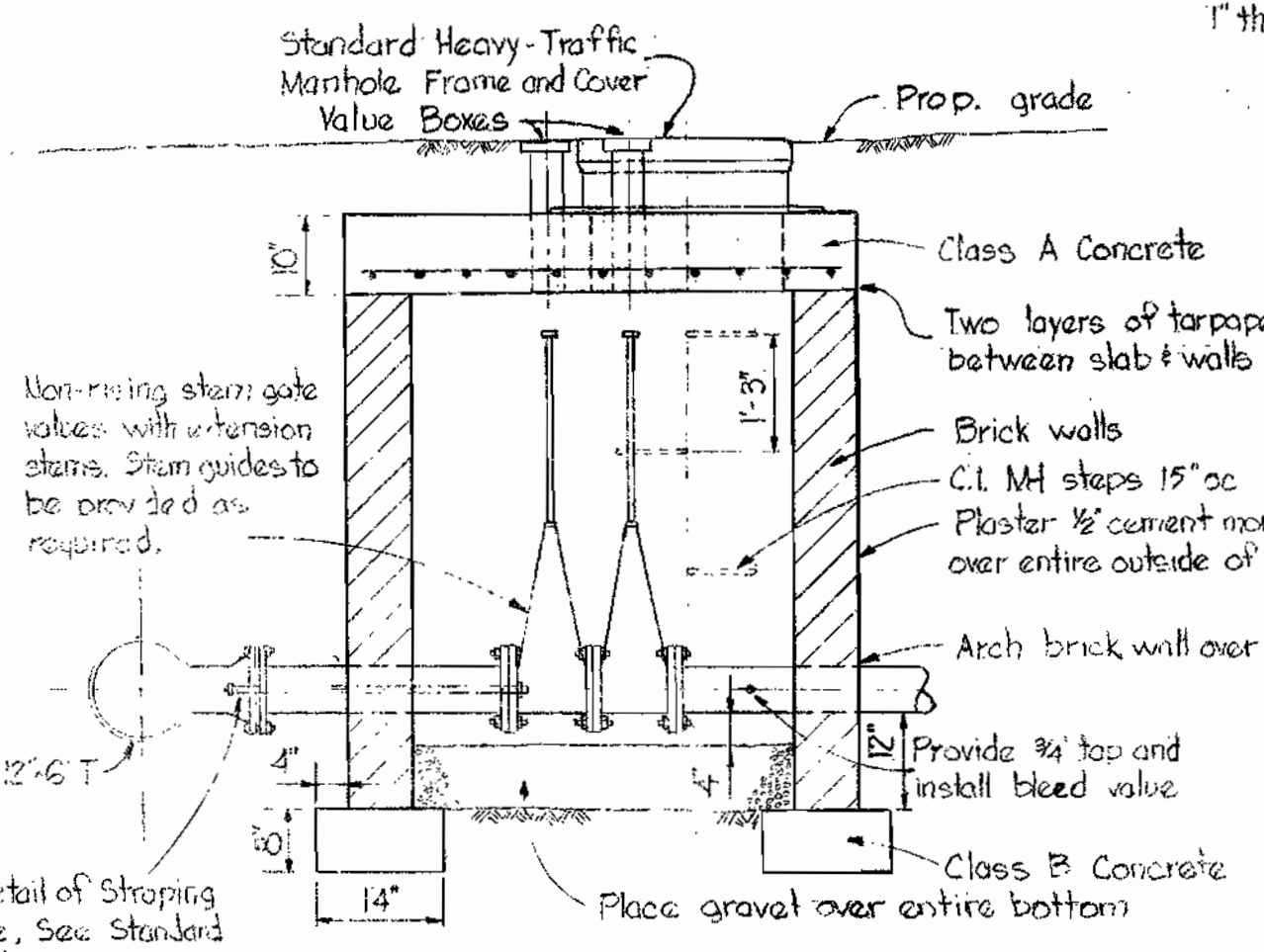
PLAN
Scale: 1"=50'



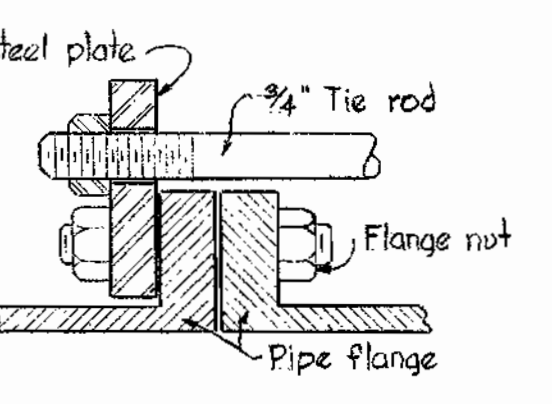
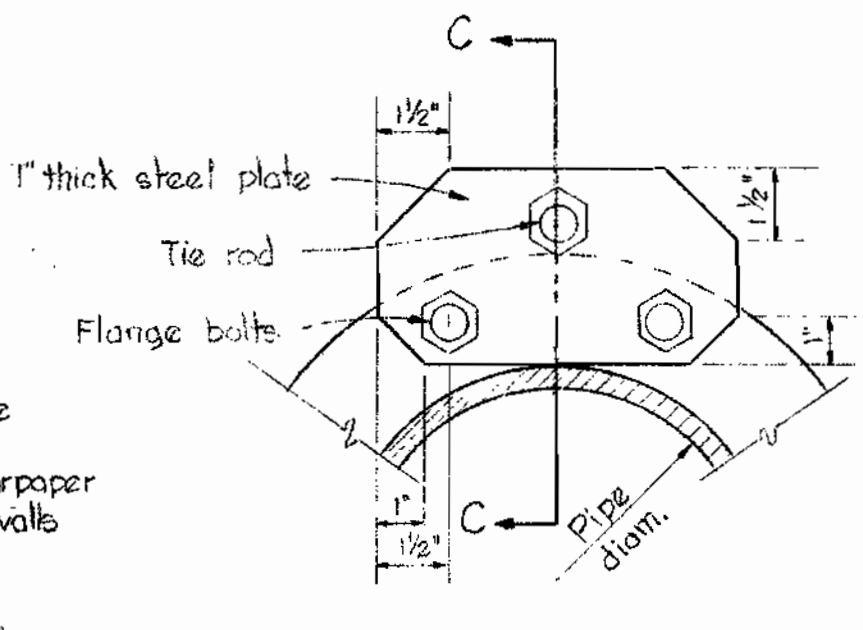
PROFILE
Scale: Vert. 1"=10'
Hor. 1"=10'



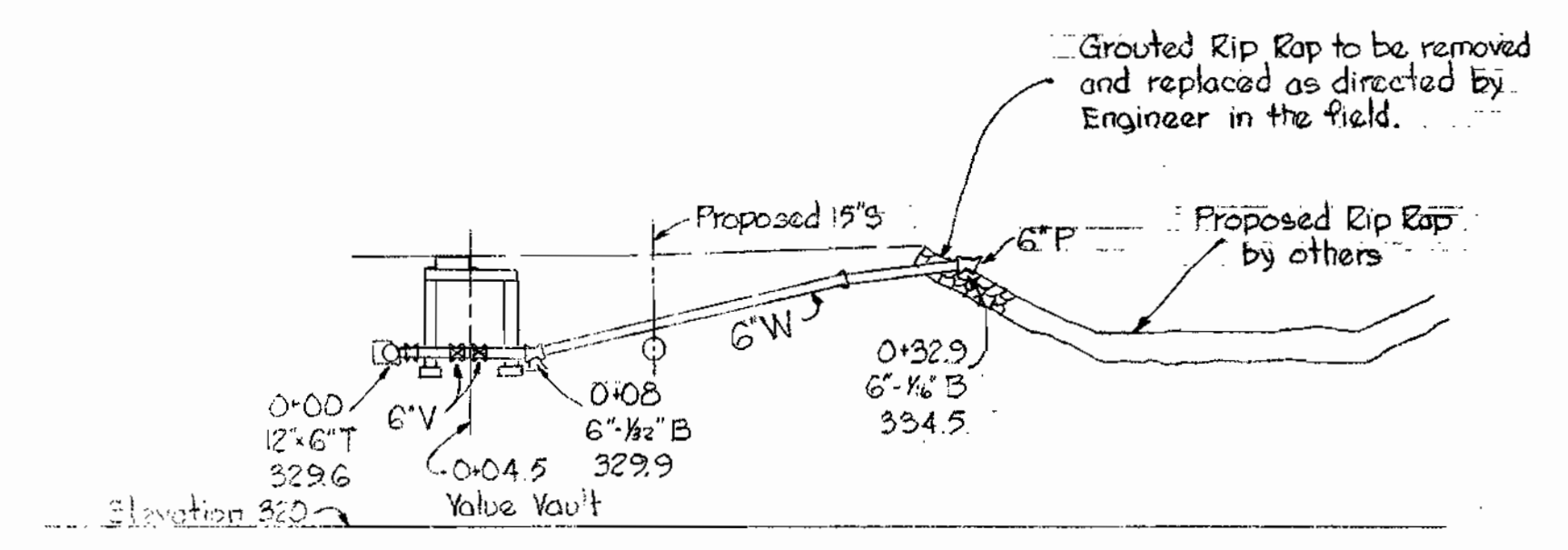
DETAIL OF 12" CONNECTION AND 6" BLOWOFF
LUMP SUM ITEM NO. A-9
Scale: 1/2"=1'



SECTION A-A
DETAIL 6" BLOWOFF VAULT
Scale: 1/2"=1'



SECTION C-C
DETAIL OF TIE RODS
AT VALVE
Scale: 3/4"=1'



PROFILE
Scale: Vert. 1"=10'
Hor. 1"=10'

WHITMAN, REQUARDT & ASSOCIATES
ENGINEERS
1304 ST. PAUL ST.
BALTIMORE, MARYLAND

HOWARD COUNTY METROPOLITAN COMMISSION
DATE: 11-15-66
W. O. S. L. H. B. T.
CHIEF ENGINEER

CONTRACT NO. 135-W

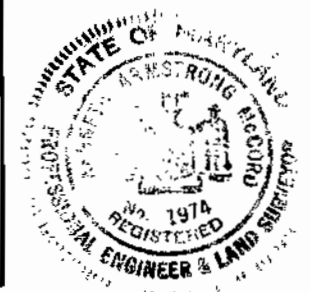
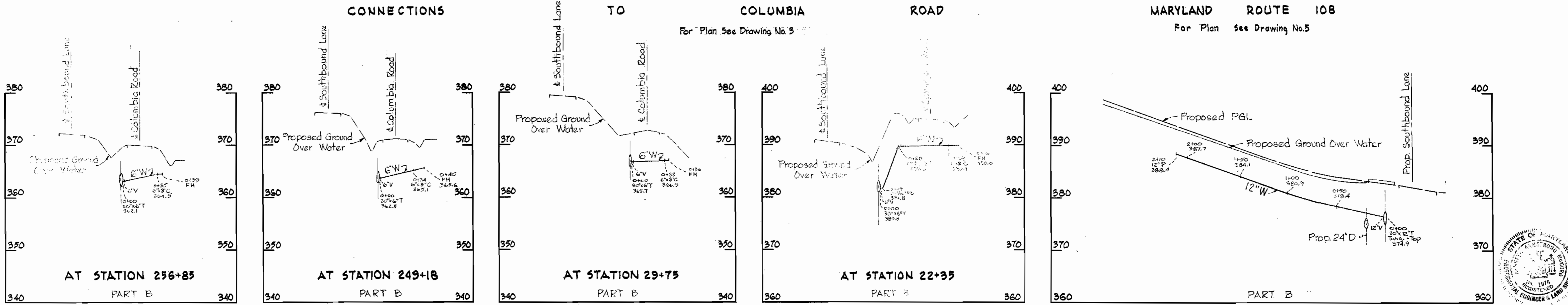
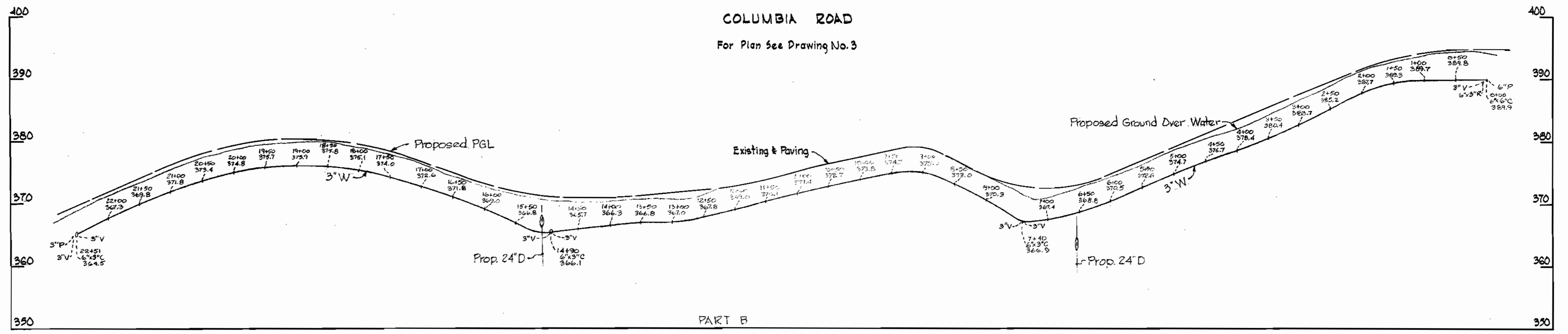
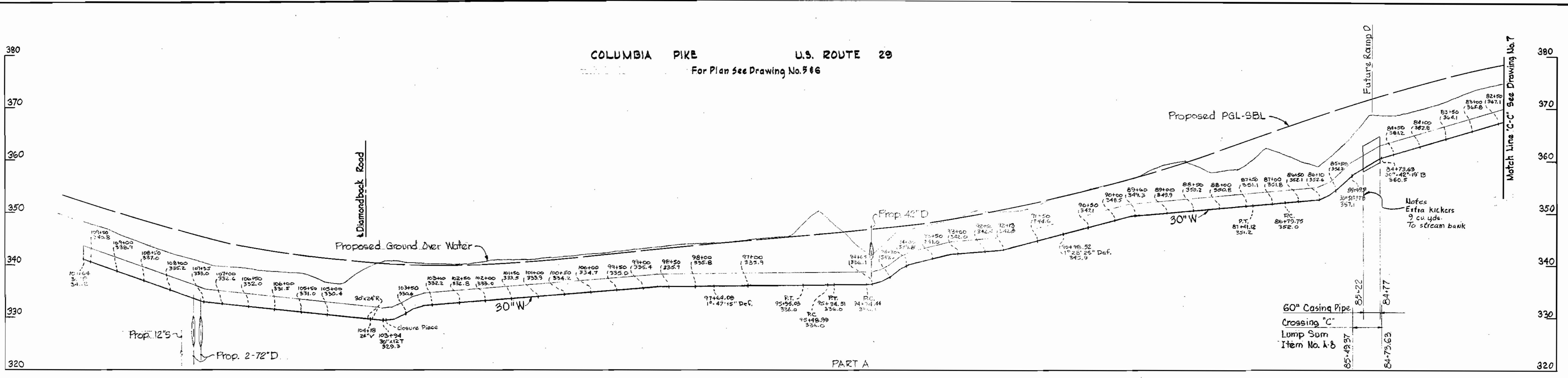
PLAN OF
WATER MAINS

ELECTION DISTRICTS
ELLCOTT CITY NO. 2, CLARKSVILLE NO. 5,
& GUILFORD NO. 6

DRAWING NO. 6 OF 8
SCALE 1"=50'

AS BUILT - JUNE 14, 1968

WS 135-W/6



Howard C. ...
Contract N^o 135-W

WHITMAN, REQUARDT & ASSOCIATES
ENGINEERS
1304 ST. PAUL ST.
BALTIMORE, MARYLAND

HOWARD COUNTY METROPOLITAN COMMISSION
DATE 11.15.66 *W. O. Libbert*
CHIEF ENGINEER

CONTRACT NO. 135-W

PROFILES OF
WATER MAINS

ELECTION DISTRICTS
ELLCOTT CITY NO. 2, CLARKSVILLE NO. 5
& GUILFORD NO. 6

DRAWING NO. 8 OF 8 SCALE AS SHOWN

AS BUILT JUNE 14, 1968

WS 135-W/8