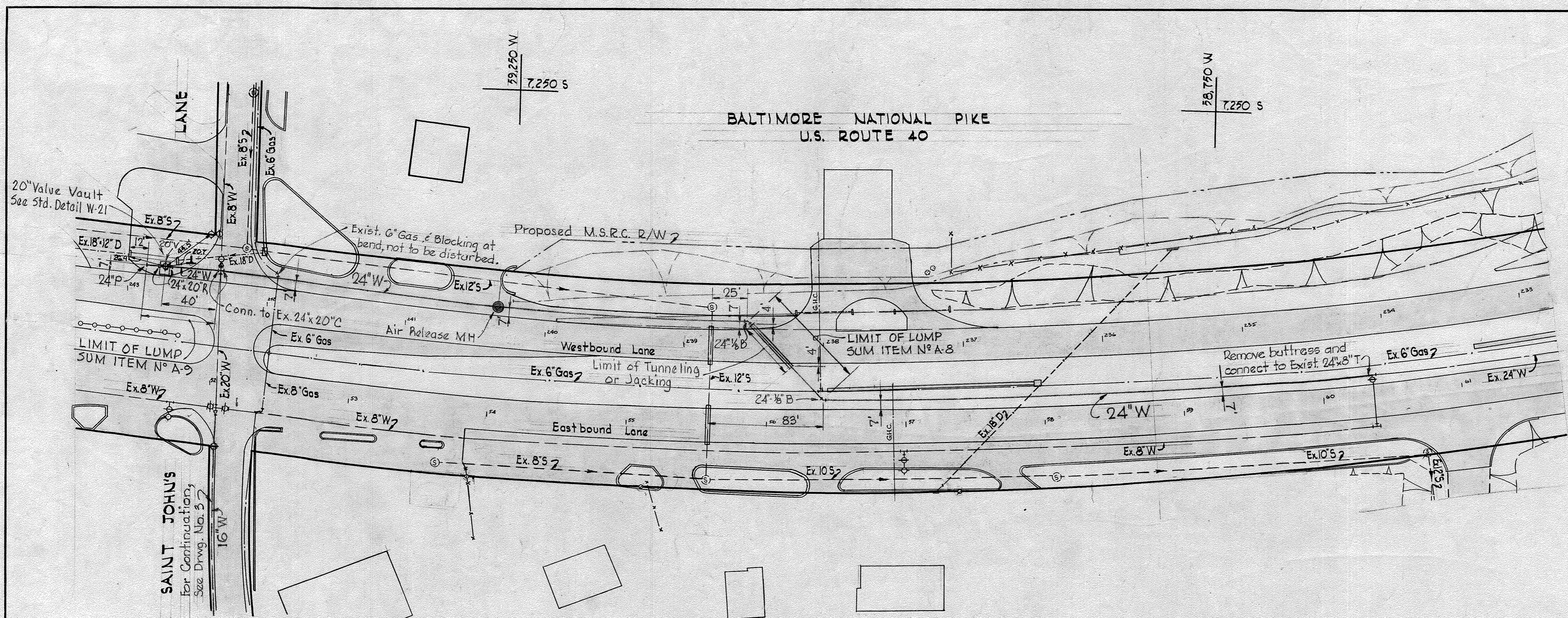


Geneva Armstrong

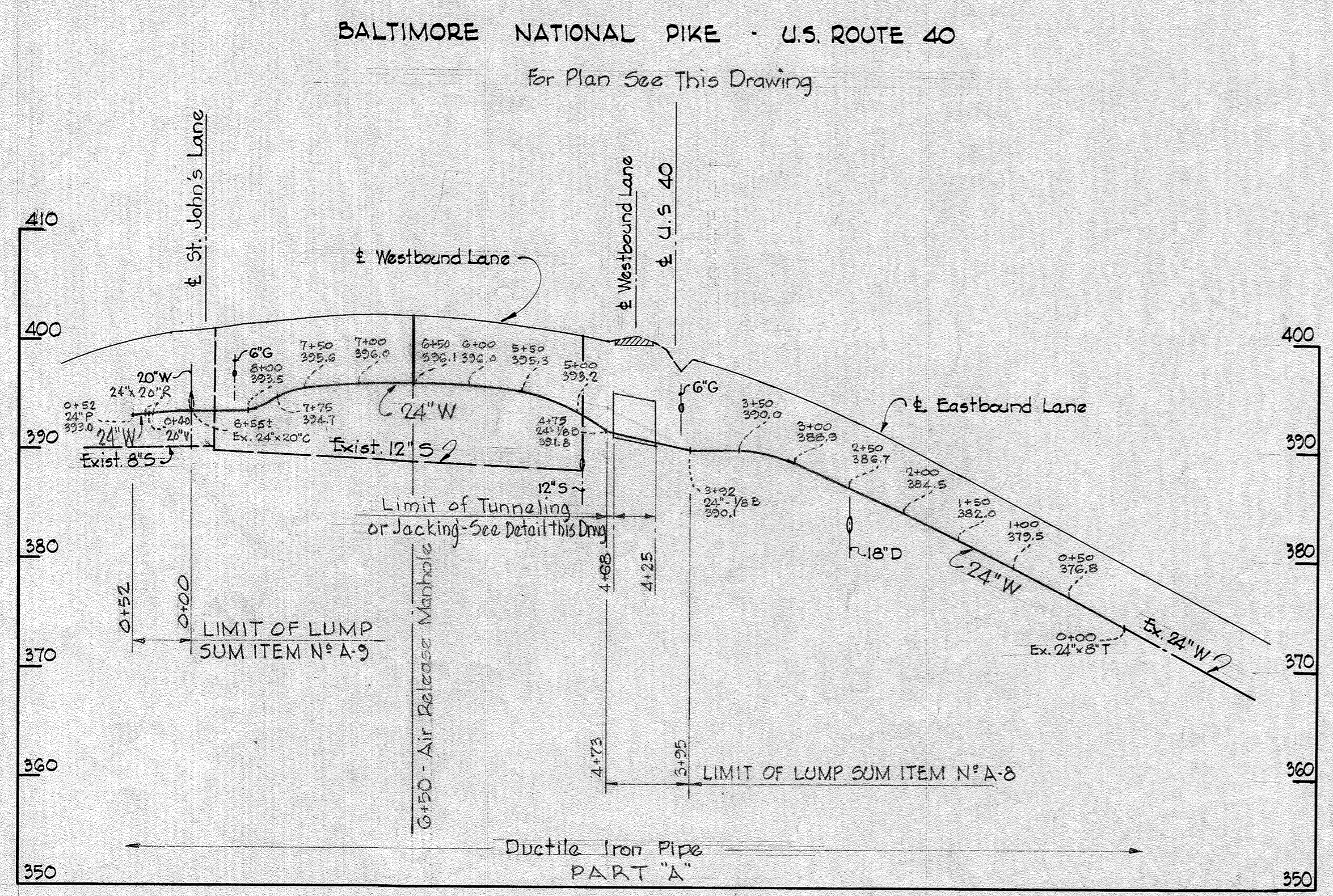
WHITMAN, REQUARDT & ASSOCIATES ENGINEERS 1304 ST. PAUL ST. BALTIMORE, MARYLAND	HOWARD COUNTY METROPOLITAN COMMISSION 6-16-66 <i>W O Fallick</i> DATE CHIEF ENGINEER	CONTRACT NO. 133-W	PLAN OF WATER MAINS	ELECTION DISTRICT ELLICOTT CITY NO. 2	DRAWING NO. 1 OF 4 SCALE 1" = 50' <small>7.5W39 7.5W38 6.5W35 6.5W37</small>
---	--	--------------------	------------------------	--	--

WS 133-w/1

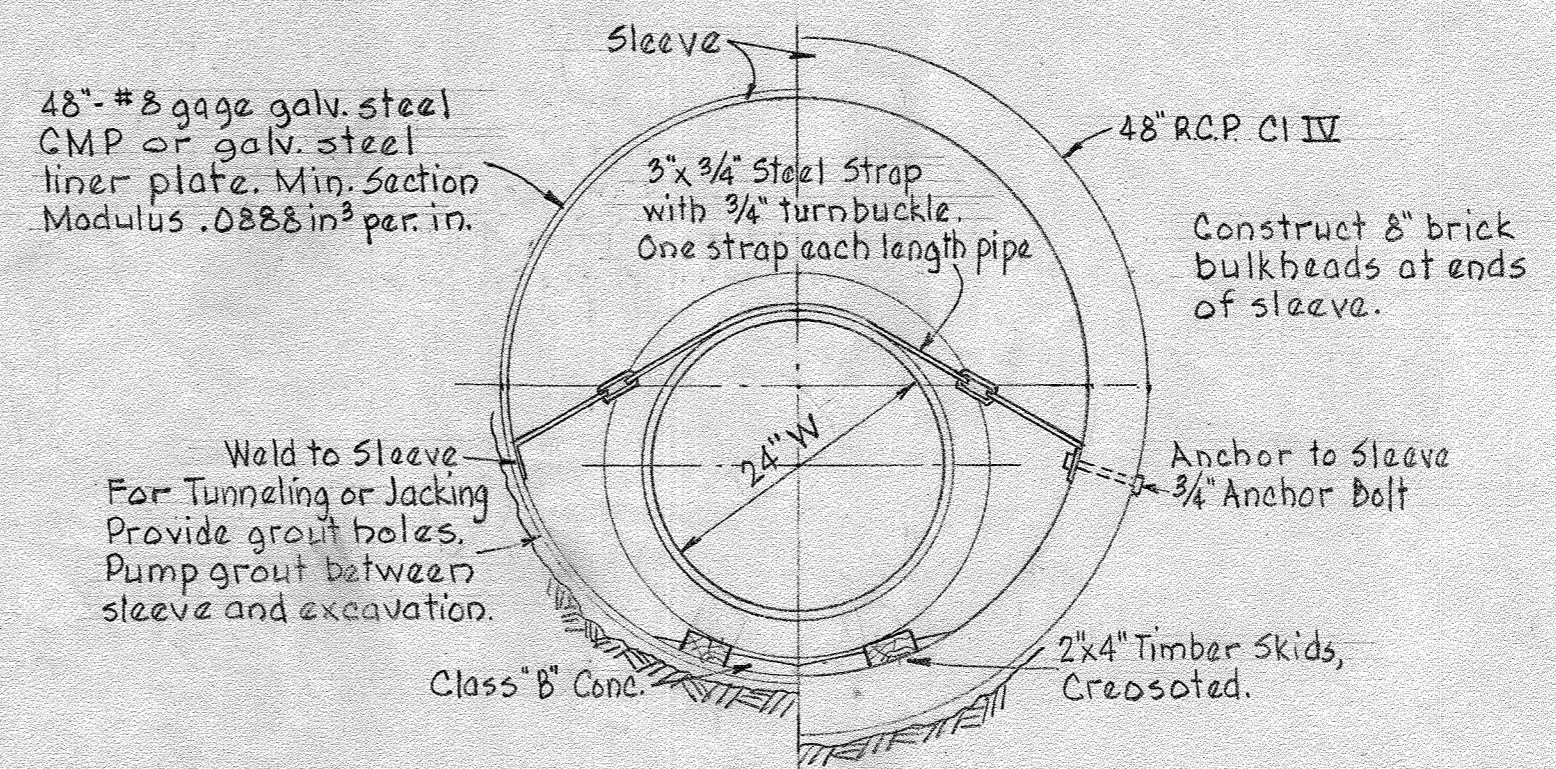


W.R. & B.M. #45 Elev. 362.36
 R.R. Spike base of Pole #6 W. side
 St. John's Lane 1000' S. of U.S. Rt. 40

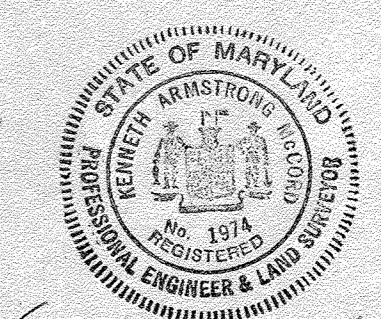
PLAN
 Scale: 1"=50'



PROFILE
 Scale: H: 1"=100'
 V: 1"=10'



**TUNNEL OR JACKING
 INSTALLATION**
 Scale 3/4"=10'



Handwritten signature

Baltimore National Pike
 US Route 40
 PART "A"
 Contract No. 133-W

WHITMAN, REQUARDT & ASSOCIATES
 ENGINEERS
 1304 ST. PAUL ST.
 BALTIMORE, MARYLAND

HOWARD COUNTY METROPOLITAN COMMISSION
 DATE 6-16-66 *W O F*
 CHIEF ENGINEER

CONTRACT NO. 133-W

PLAN AND PROFILE OF
 WATER MAINS

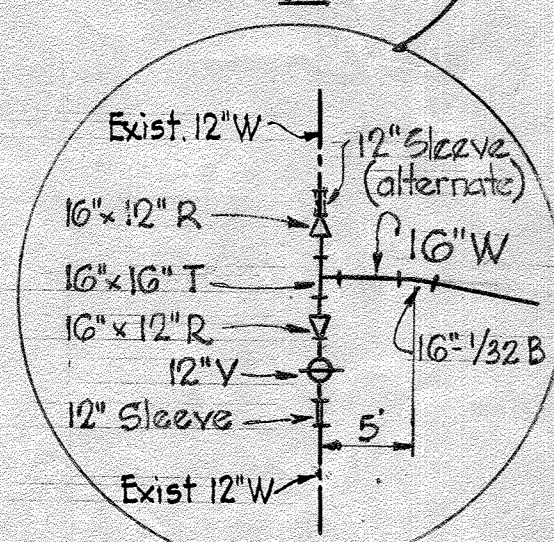
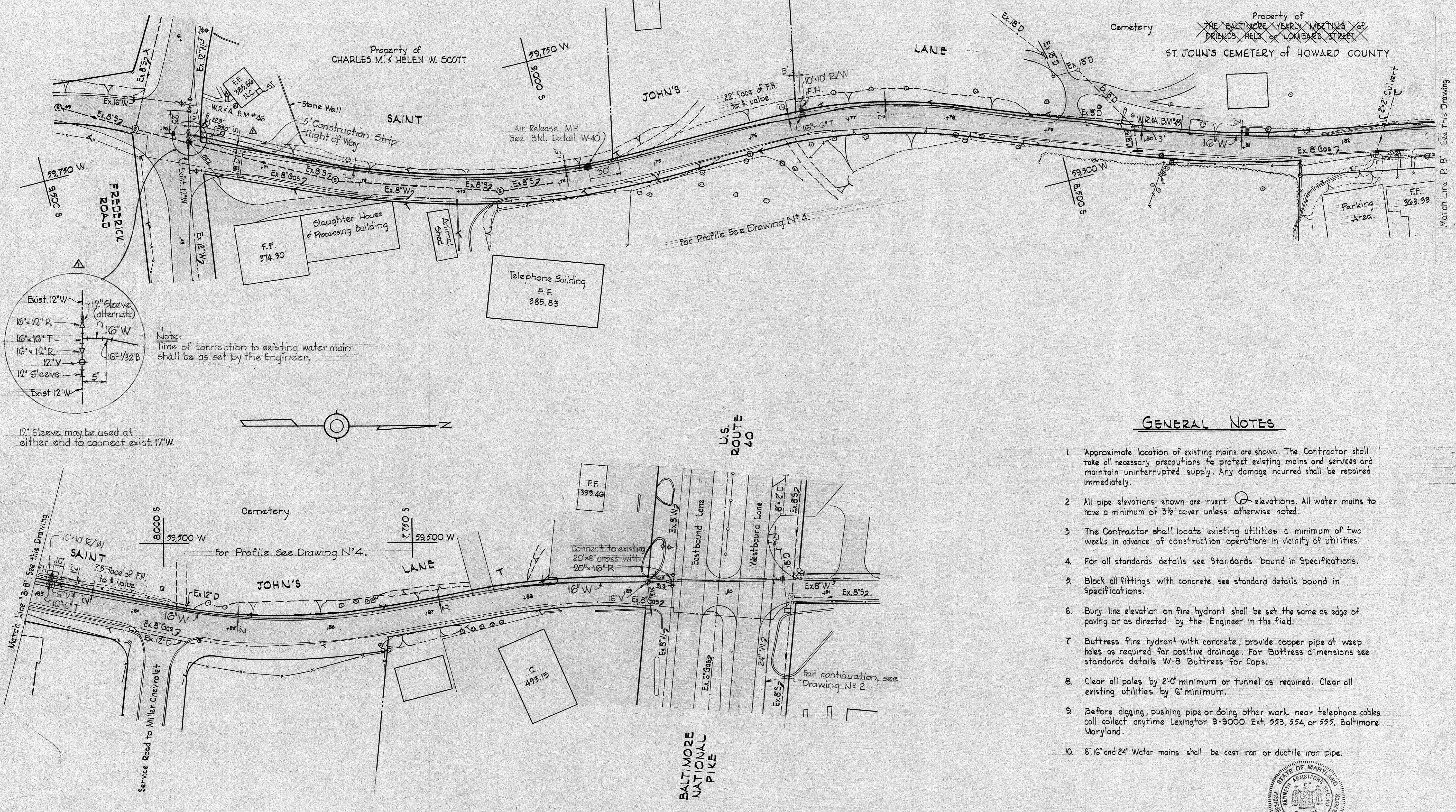
ELECTION DISTRICT
 ELLICOTT CITY NO. 2

DRAWING NO. 2 OF 4	SCALE AS SHOWN
--------------------	----------------

WS 133-w/2

W.R.#A. B.M.*46 Elev. 380.19
 RR Spike base of E pole *25717 @
 N.W. cor. Int. St. John's Lane & Old
 Frederick Road.

W.R.#A. B.M.*45 Elev. 362.56
 RR Spike base of Pole *6 W side
 St. John's Lane 1,000 S. of U.S. Rt. 40.

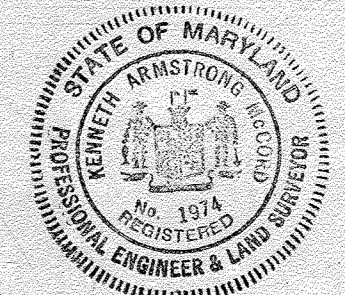


Note:
 Time of connection to existing water main
 shall be as set by the Engineer.

12" Sleeve may be used at
 either end to connect exist. 12" W.

GENERAL NOTES

1. Approximate location of existing mains are shown. The Contractor shall take all necessary precautions to protect existing mains and services and maintain uninterrupted supply. Any damage incurred shall be repaired immediately.
2. All pipe elevations shown are invert elevations. All water mains to have a minimum of 3 1/2' cover unless otherwise noted.
3. The Contractor shall locate existing utilities a minimum of two weeks in advance of construction operations in vicinity of utilities.
4. For all standards details see Standards bound in Specifications.
5. Block all fittings with concrete, see standard details bound in Specifications.
6. Bury line elevation on fire hydrant shall be set the same as edge of paving or as directed by the Engineer in the field.
7. Buttress fire hydrant with concrete; provide copper pipe at weep holes as required for positive drainage. For Buttress dimensions see standards details W-B Buttress for Caps.
8. Clear all poles by 2'-0" minimum or tunnel as required. Clear all existing utilities by 6' minimum.
9. Before digging, pushing pipe or doing other work near telephone cables call collect anytime Lexington 9-9000 Ext. 553, 554, or 555, Baltimore Maryland.
10. 6", 16" and 24" Water mains shall be cast iron or ductile iron pipe.



Keene Armstrong
 Saint John's Lane
 PART "B"
 Contract No. 133-W

WHITMAN, REQUARDT & ASSOCIATES ENGINEERS 1304 ST. PAUL ST. BALTIMORE, MARYLAND	HOWARD COUNTY METROPOLITAN COMMISSION 6-16-66 DATE <i>W. O. Elliott</i> CHIEF ENGINEER	CONTRACT NO. 133-W	PLAN OF WATER MAINS	ELECTION DISTRICT ELLICOTT CITY NO. 2	DRAWING NO. 3 OF 4	SCALE 1"=50'
---	--	--------------------	------------------------	--	--------------------------	-----------------

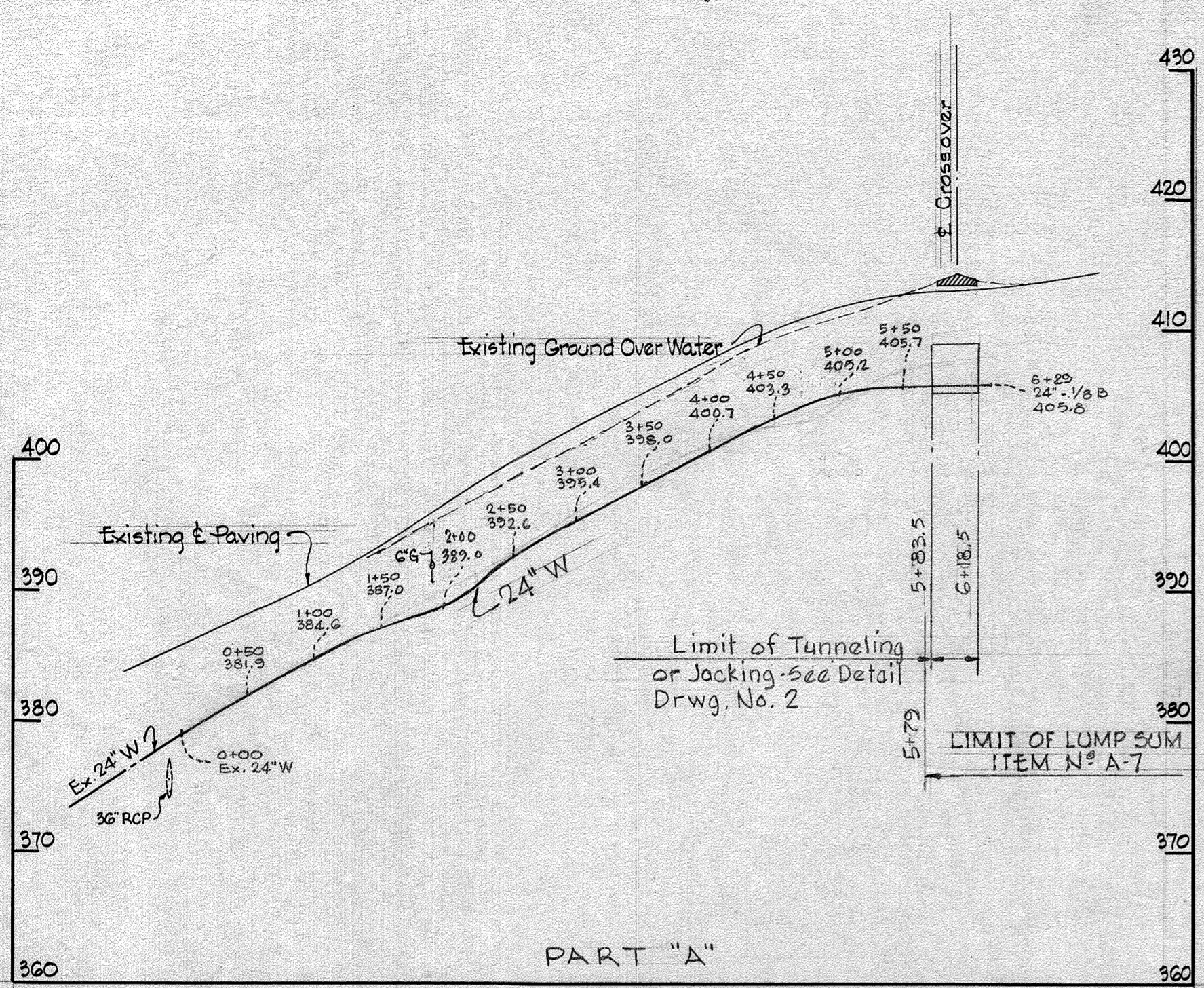
7-18-66 Revised 16" W @ Frederick Rd. / St. John's Lane.
 N° Date Revision

AS BUILT JAN 14, 1970

FB 3576, 2117, 2126

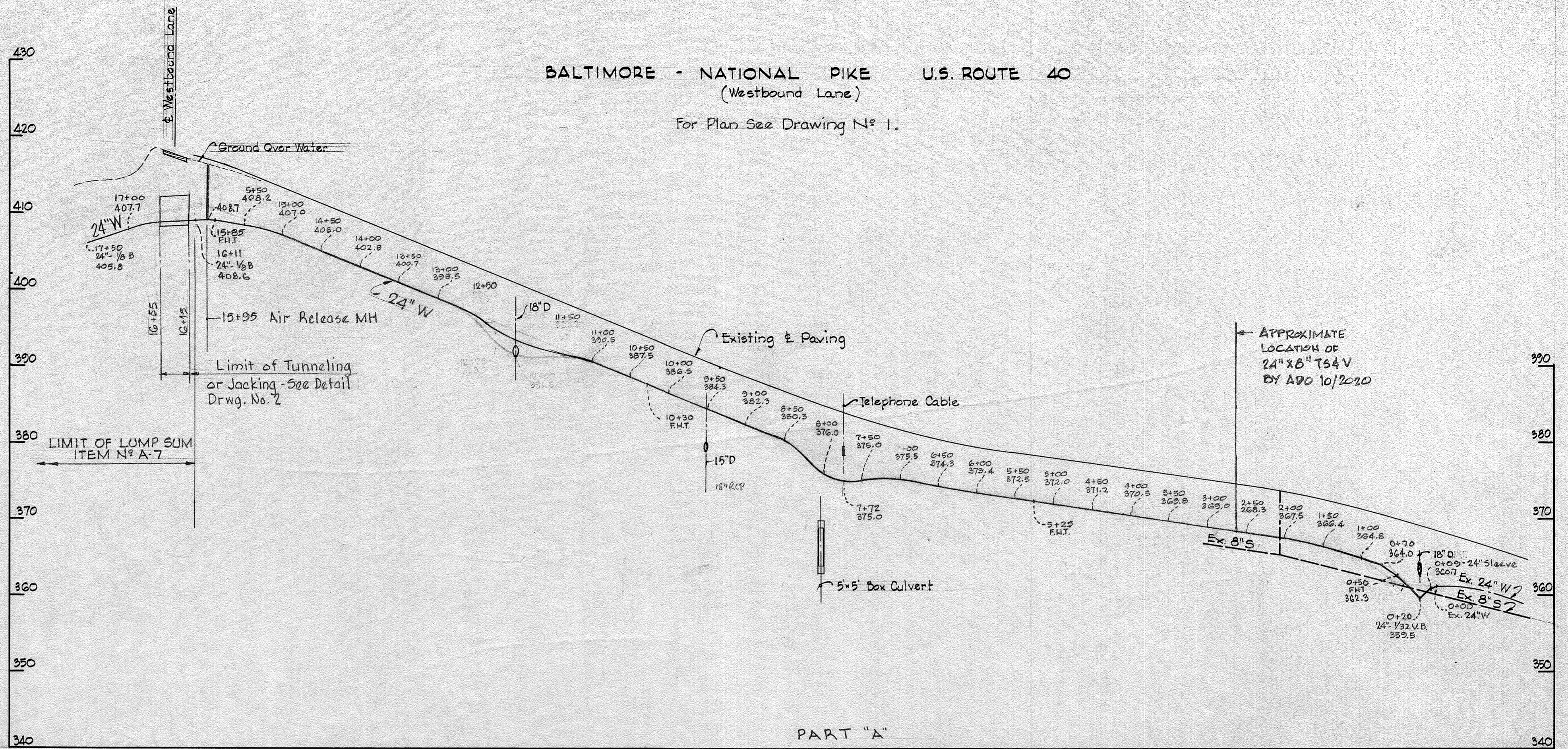
WS 133-w/3

BALTIMORE - NATIONAL PIKE U.S. ROUTE 40
(Eastbound Lane)
For Plan See Drawing N^o 1



PART "A"

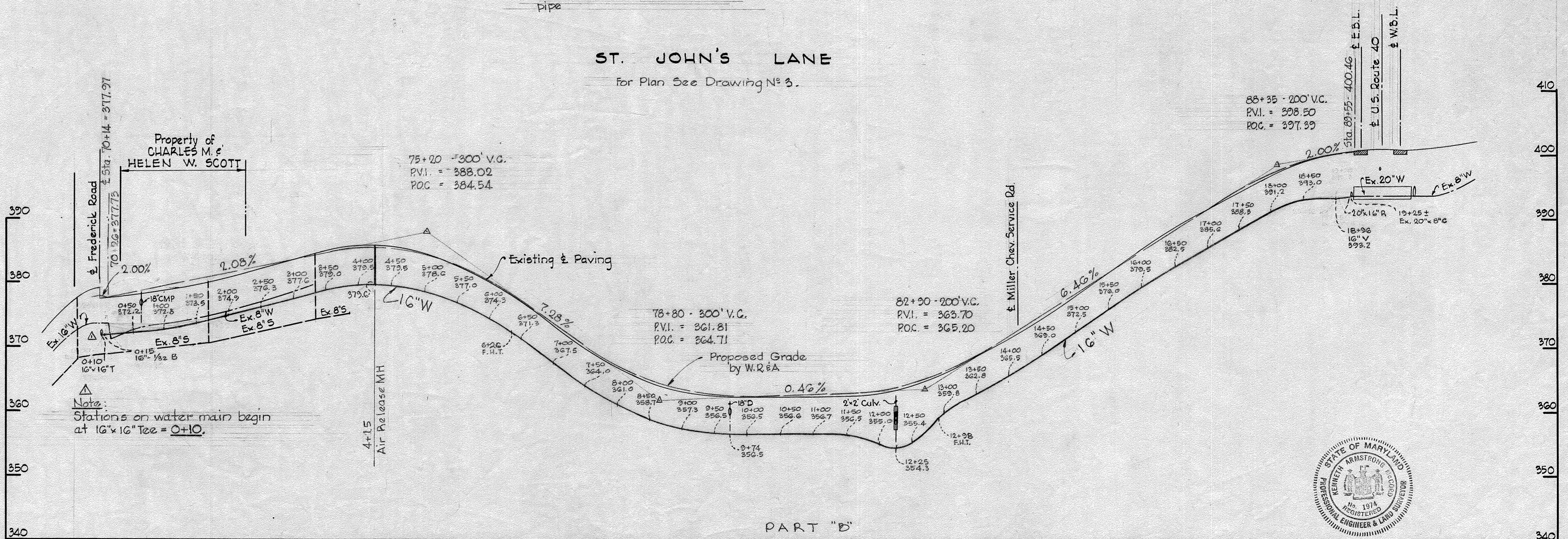
BALTIMORE - NATIONAL PIKE U.S. ROUTE 40
(Westbound Lane)
For Plan See Drawing N^o 1



PART "A"

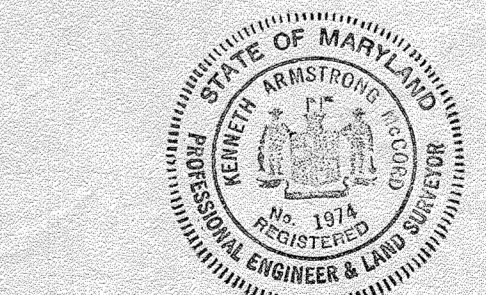
NOTE:
All water pipe ductile iron pipe

ST. JOHN'S LANE
for Plan See Drawing N^o 3



PART "B"

17-18-66 Revised 16" W @ Frederick Rd., Water Stationing begins 0+10.
N^o Date Revision



Handwritten signature
PARTS "A" & "B"
Contract 133-W

WHITMAN, REQUARDT & ASSOCIATES
ENGINEERS
1304 ST. PAUL ST.
BALTIMORE, MARYLAND

HOWARD COUNTY METROPOLITAN COMMISSION
DATE 6-16-66 *W. J. Hill*
CHIEF ENGINEER

CONTRACT NO. 133-W

PROFILES OF
WATER MAINS

ELECTION DISTRICT
ELLCOTT CITY NO. 2

DRAWING NO. 4 OF 4 SCALE H-1"=100' V-1"=10'

WS 133w/4