

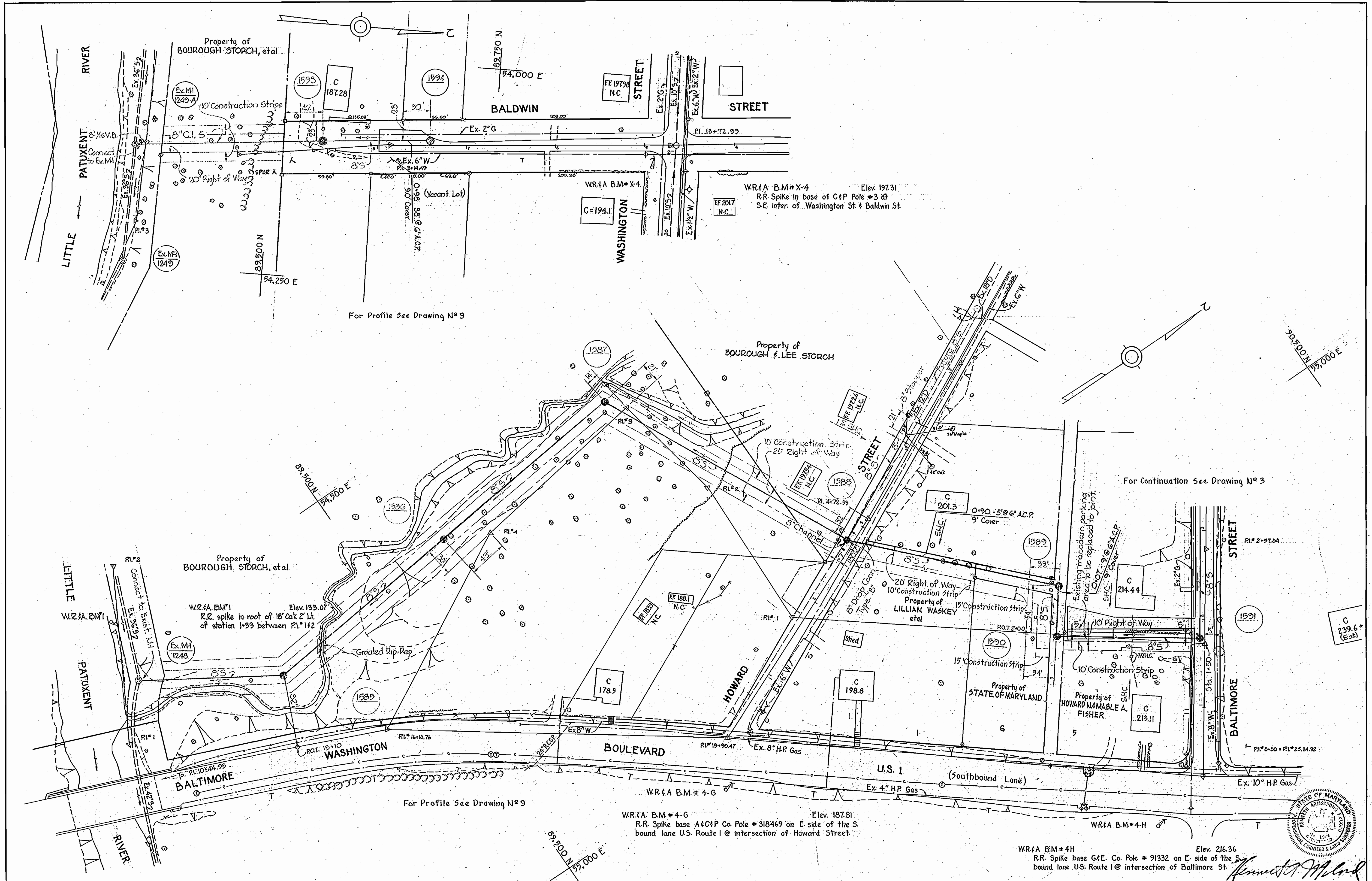
CONTRACT 128-S
SAVAGE SEWER MAIN EXTENSIONS
HOWARD COUNTY METROPOLITAN COMMISSION
ELLICOTT CITY, MARYLAND



Kenneth A. M. [Signature]
 Contract 128-S

| | | | | | | |
|---|--|---------------------------|--------------|-------------------------------------|--------------------------------------|----------------|
| WHITMAN, REQUARDT & ASSOCIATES ENGINEERS 1304 ST. PAUL ST. BALTIMORE, MARYLAND | HOWARD COUNTY METROPOLITAN COMMISSION DATE <u>12-20-66</u> <i>W. O. Elliott</i> CHIEF ENGINEER | CONTRACT NO. <u>128-S</u> | LOCATION MAP | ELECTION DISTRICT GUILFORD NO. 6 | DRAWING NO. <u>1</u> OF <u>12</u> | SCALE AS SHOWN |
|---|--|---------------------------|--------------|-------------------------------------|--------------------------------------|----------------|

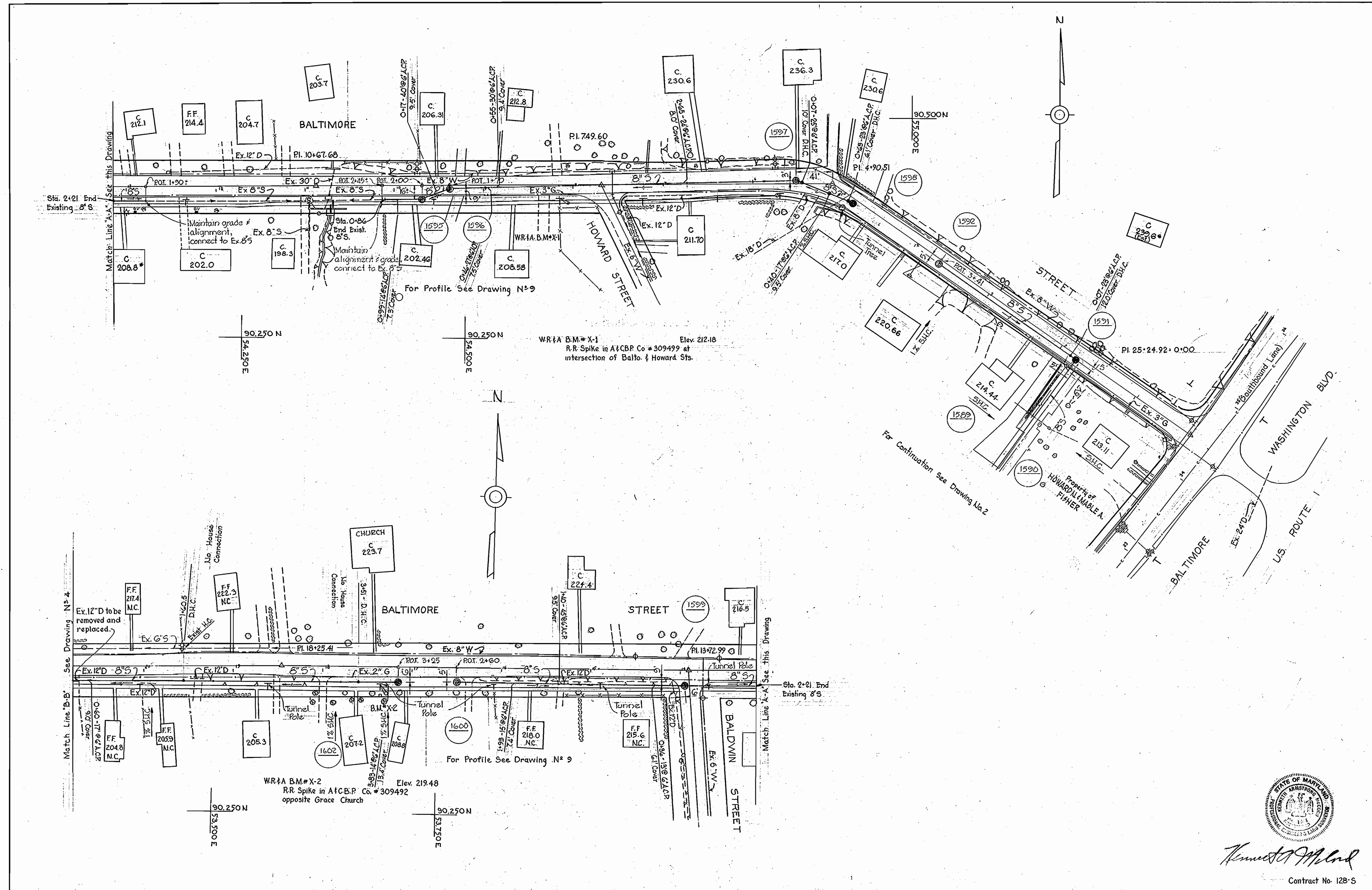
W.S. 128-5/1



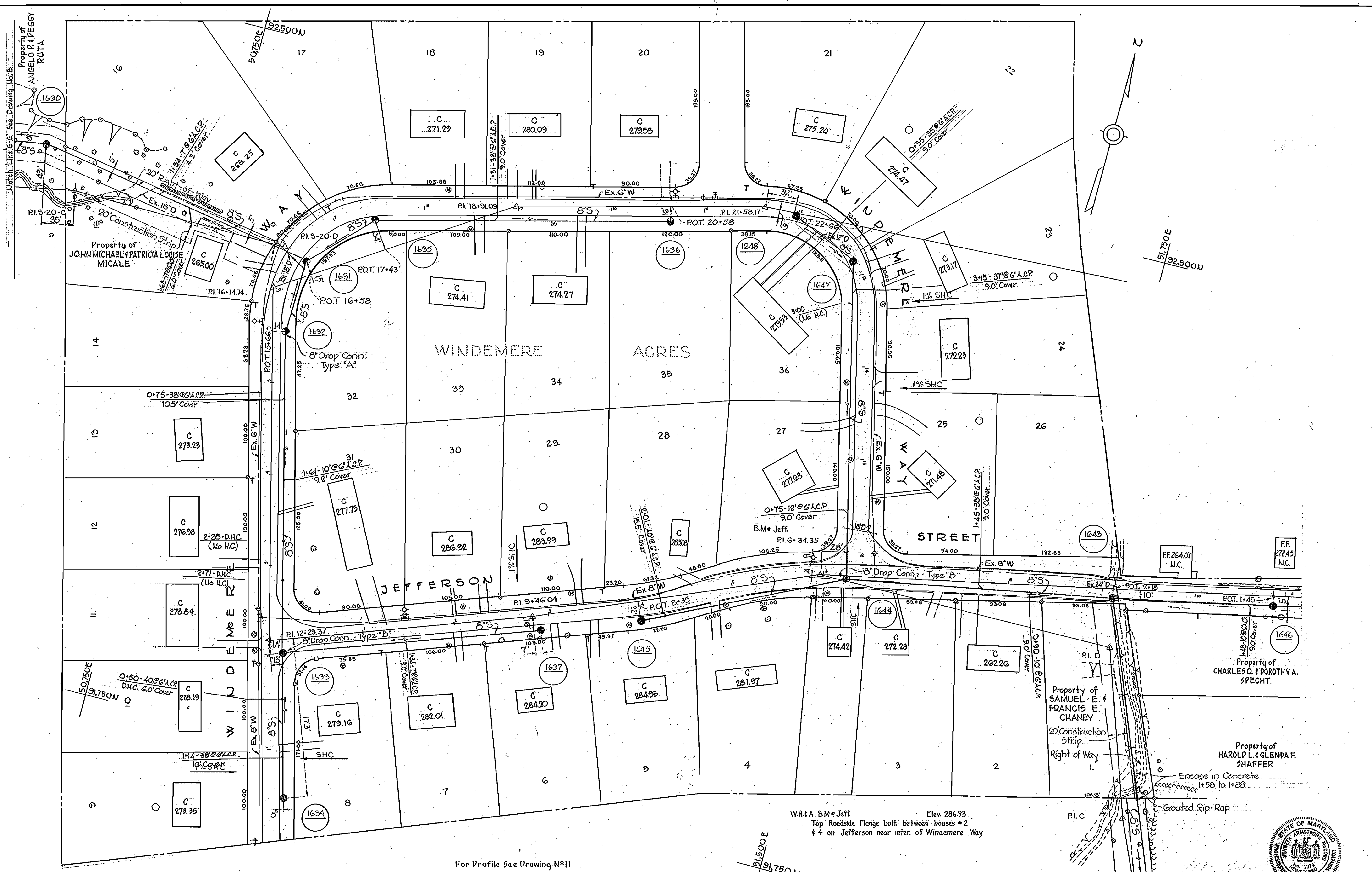
WS 128-S/2

| | | | | | |
|---|---|--------------------|------------------------|-------------------------------------|---|
| WHITMAN, REQUARDT & ASSOCIATES ENGINEERS 1304 ST. PAUL ST. BALTIMORE, MARYLAND | HOWARD COUNTY METROPOLITAN COMMISSION DATE 12-20-66 <i>W.O. Folwell</i> CHIEF ENGINEER | CONTRACT NO. 128-S | PLAN OF SEWER MAINS | ELECTION DISTRICT GUILFORD NO. 6 | DRAWING NO. 2 OF 12 SCALE 1"=50' AS BUILT JUNE '68 |
|---|---|--------------------|------------------------|-------------------------------------|---|

WS 128-S/3



| | | | | | |
|---|---|--------------------|------------------------|-------------------------------------|---|
| WHITMAN, REQUARDT & ASSOCIATES ENGINEERS 1304 ST. PAUL ST. BALTIMORE, MARYLAND | HOWARD COUNTY METROPOLITAN COMMISSION DATE 12-20-66 <i>W O Faltus</i> CHIEF ENGINEER | CONTRACT NO. 128-S | PLAN OF SEWER MAINS | ELECTION DISTRICT GUILFORD NO. 6 | DRAWING NO. 3 OF 12 SCALE 1" = 50' <small>46 NE 1-3 16 NE 1-4</small> |
|---|---|--------------------|------------------------|-------------------------------------|---|



W.R. & A. B.M. = Jeff. Elev. 286.93
 Top Roadside Flange bolt between houses #2
 & #4 on Jefferson near inter. of Windemere Way

For Profile See Drawing N° 11

For Continuation See Drawing N° 8



Samuel E. Chaney
 Contract No. 128-S

| | | | | | |
|---|--|--------------------|------------------------|-------------------------------------|---|
| WHITMAN, REQUARDT & ASSOCIATES ENGINEERS 1304 ST. PAUL ST. BALTIMORE, MARYLAND | HOWARD COUNTY METROPOLITAN COMMISSION 12-20-66 <i>W. O. Labret</i> CHIEF ENGINEER | CONTRACT NO. 128-S | PLAN OF SEWER MAINS | ELECTION DISTRICT GUILFORD NO. 6 | DRAWING NO. 7 OF 12 SCALE 1"=50' <small>4748-128-3 4460753 1278E 17-4 4460753</small> |
|---|--|--------------------|------------------------|-------------------------------------|---|

W. O. 5562-2

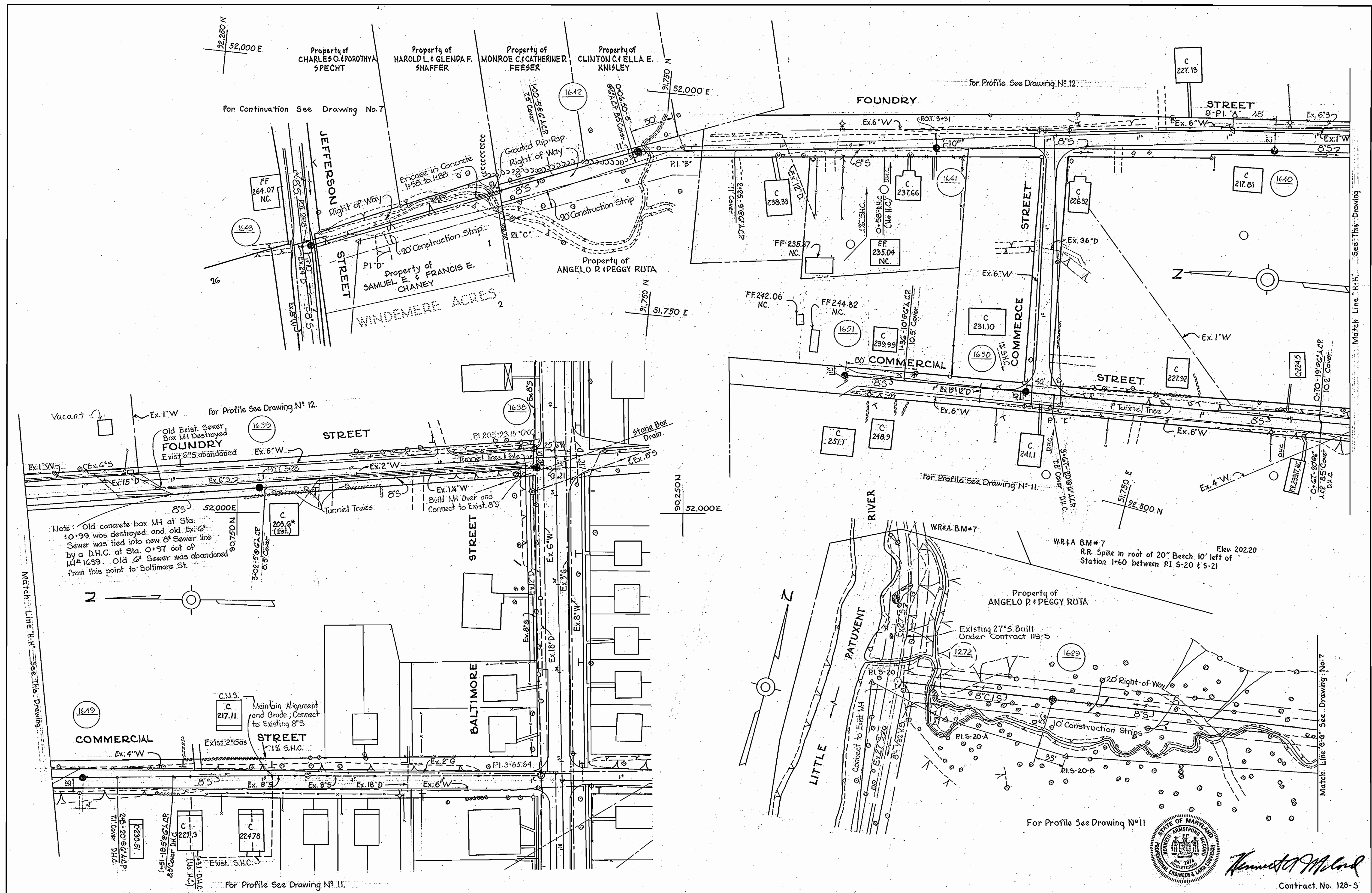
AS BUILT

11 JUNE '68

FB-3586

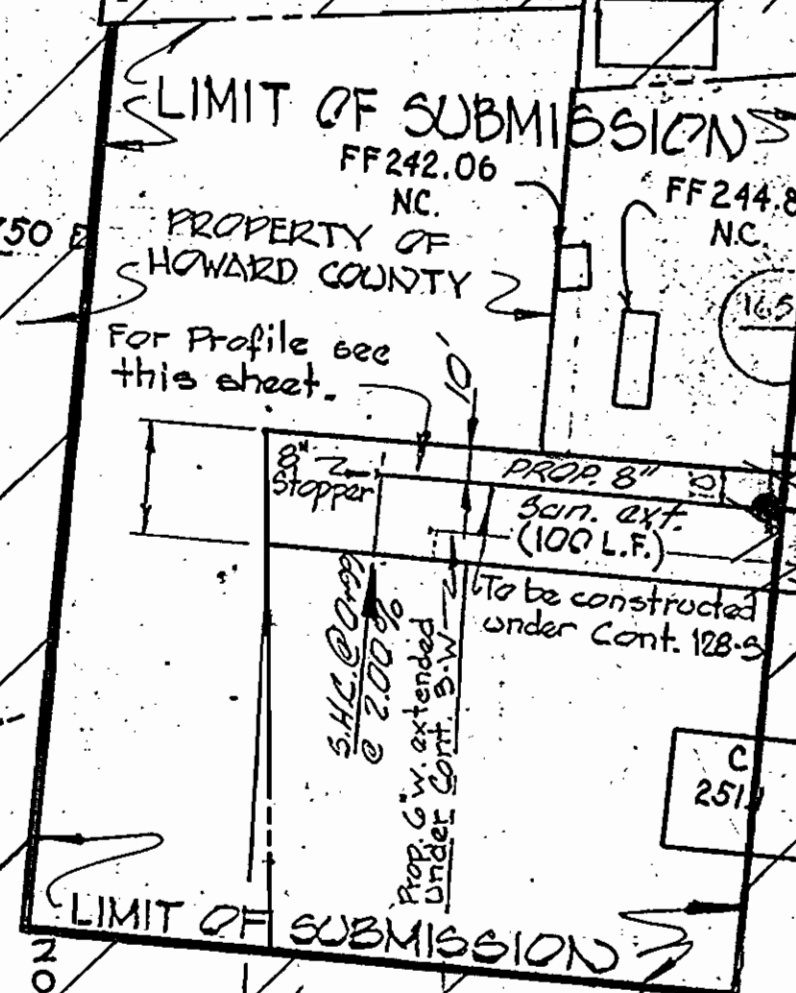
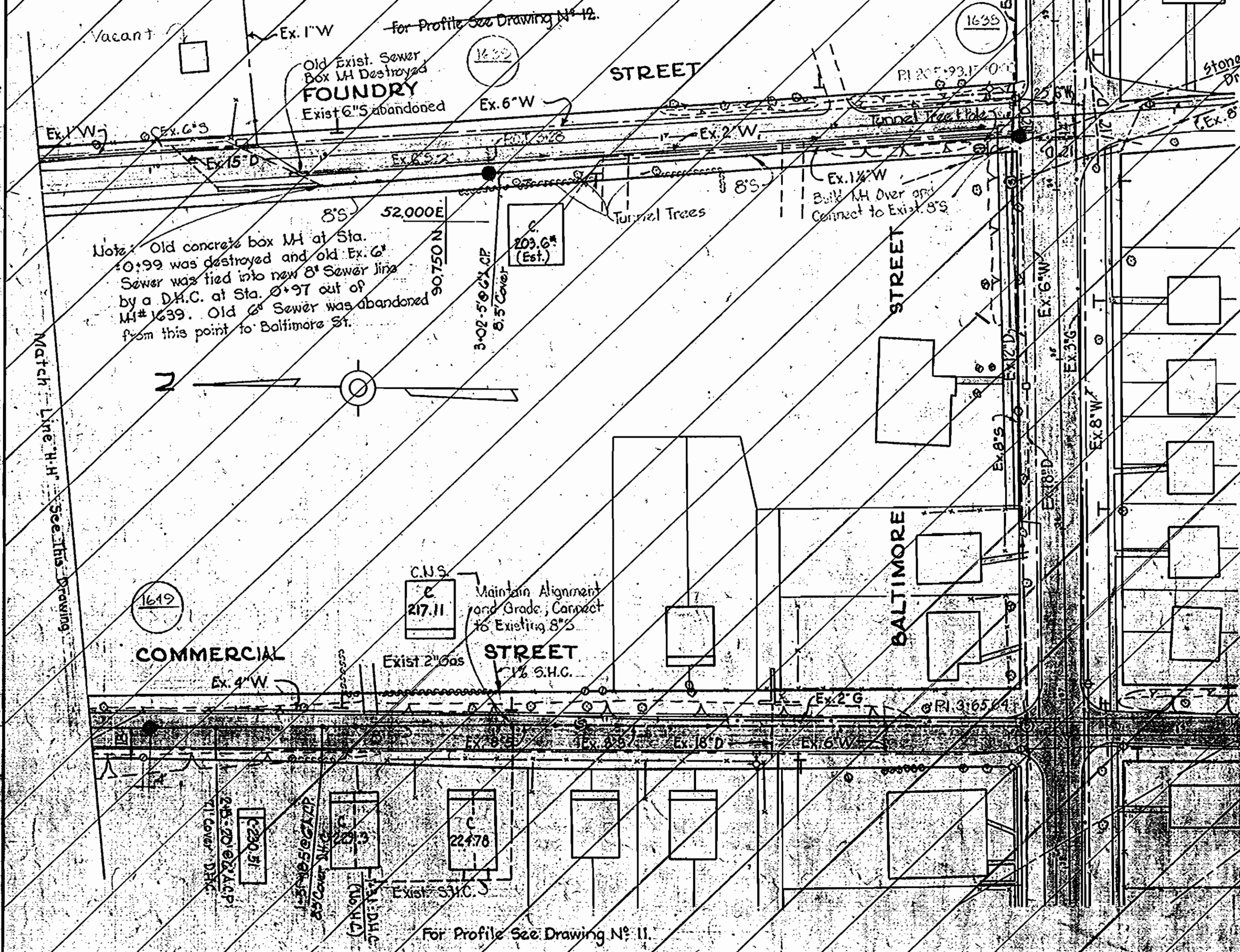
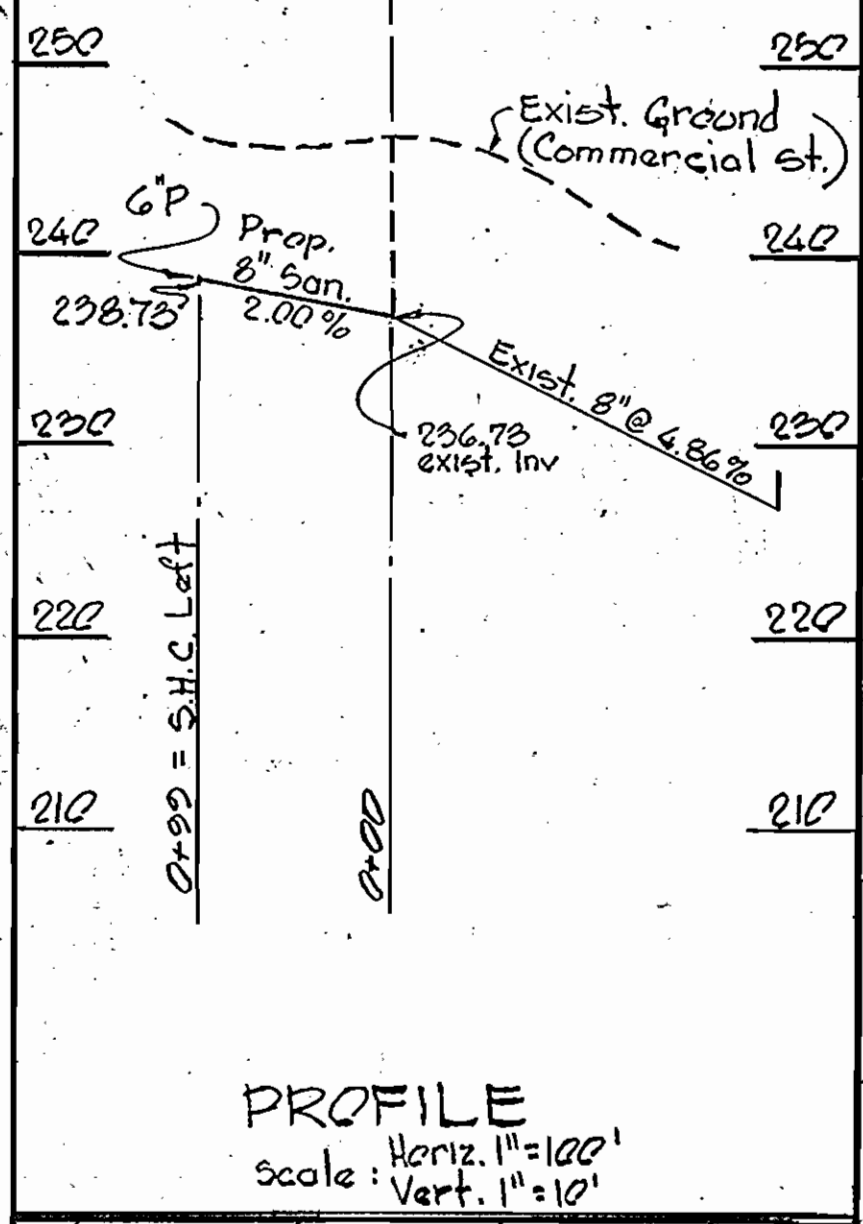
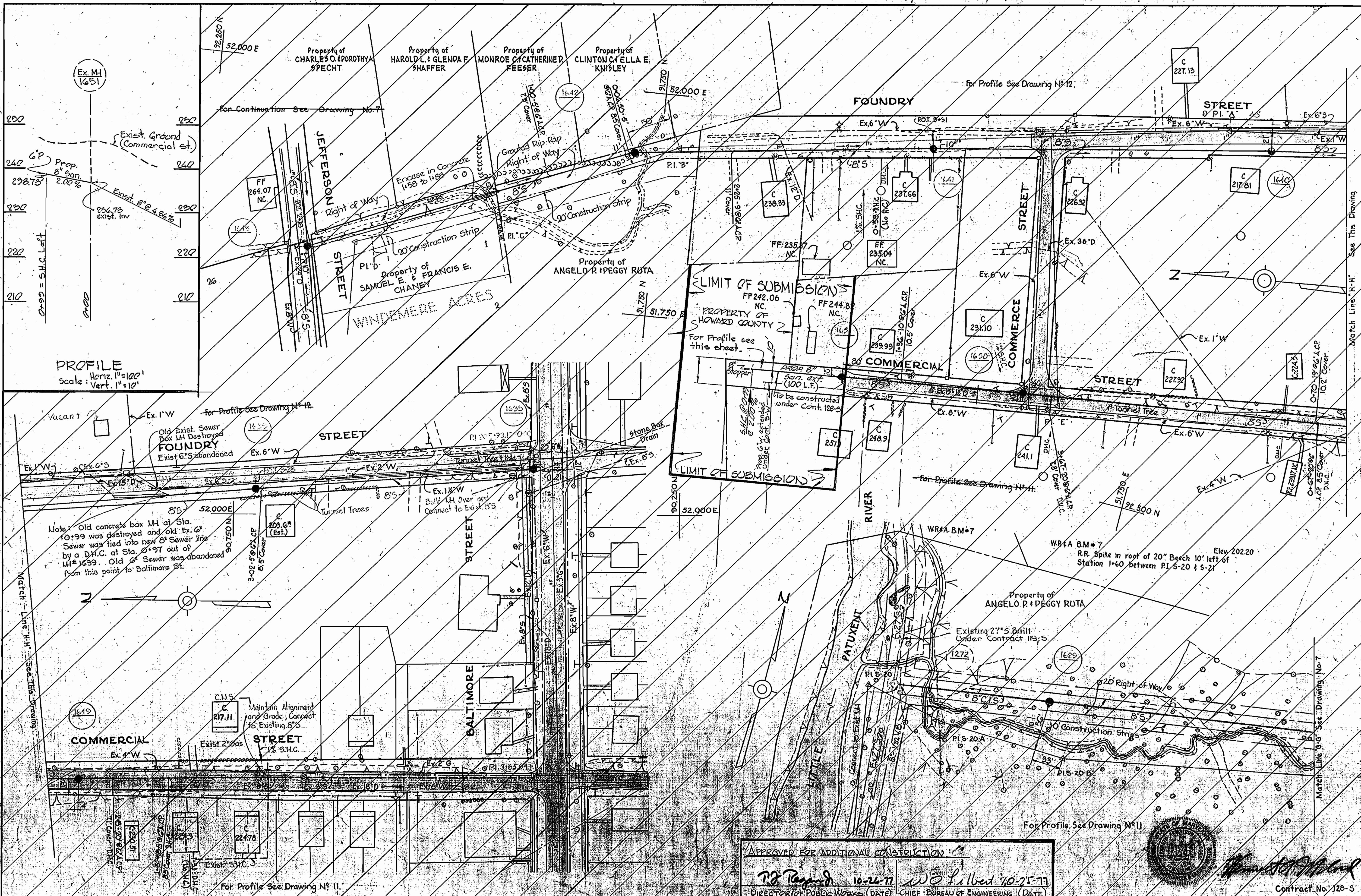
WS 128-S/7

WS 128-S/8



| | | | | | |
|---|--|--------------------|------------------------|---|---|
| WHITMAN, REQUARDT & ASSOCIATES ENGINEERS 1304 ST. PAUL ST. BALTIMORE, MARYLAND | HOWARD COUNTY METROPOLITAN COMMISSION DATE 12-20-66 W. O. Hubert CHIEF ENGINEER | CONTRACT NO. 128-S | PLAN OF SEWER MAINS | ELECTION DISTRICT GUILFORD NO. 6 AS BUILT | DRAWING NO. 8 OF 12 SCALE 1" = 50' 11 JUNE '68 FB 3536 |
|---|--|--------------------|------------------------|---|---|

W. O. 5562-2



APPROVED FOR ADDITIONAL CONSTRUCTION

P.R. Tappan 10-26-77 *W.D. Talbot* 10-25-77

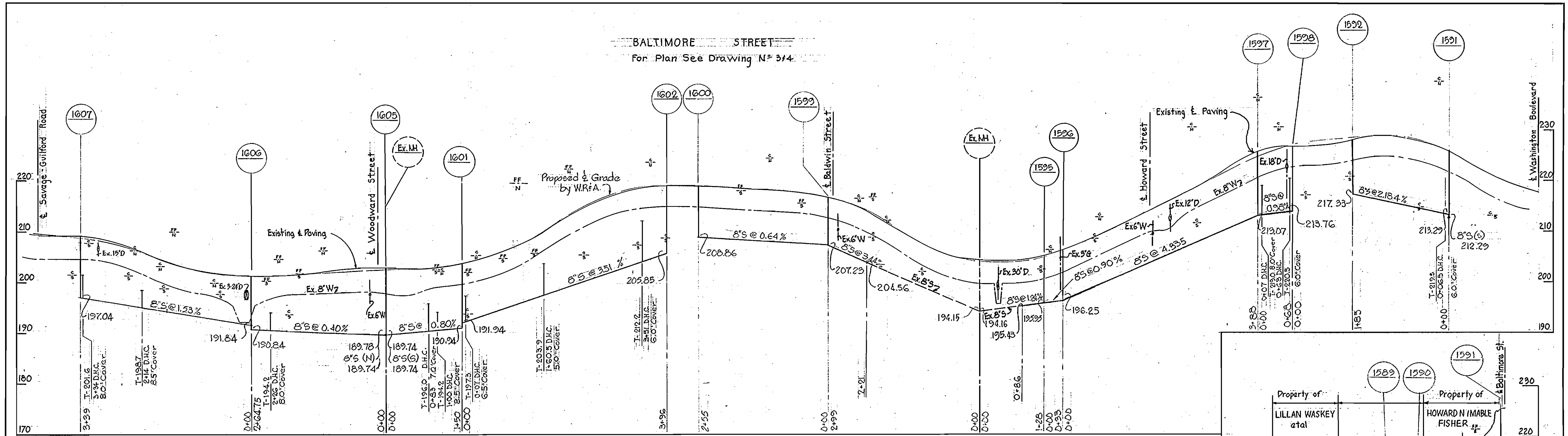
DIRECTOR OF PUBLIC WORKS (DATE) CHIEF, BUREAU OF ENGINEERING (DATE)



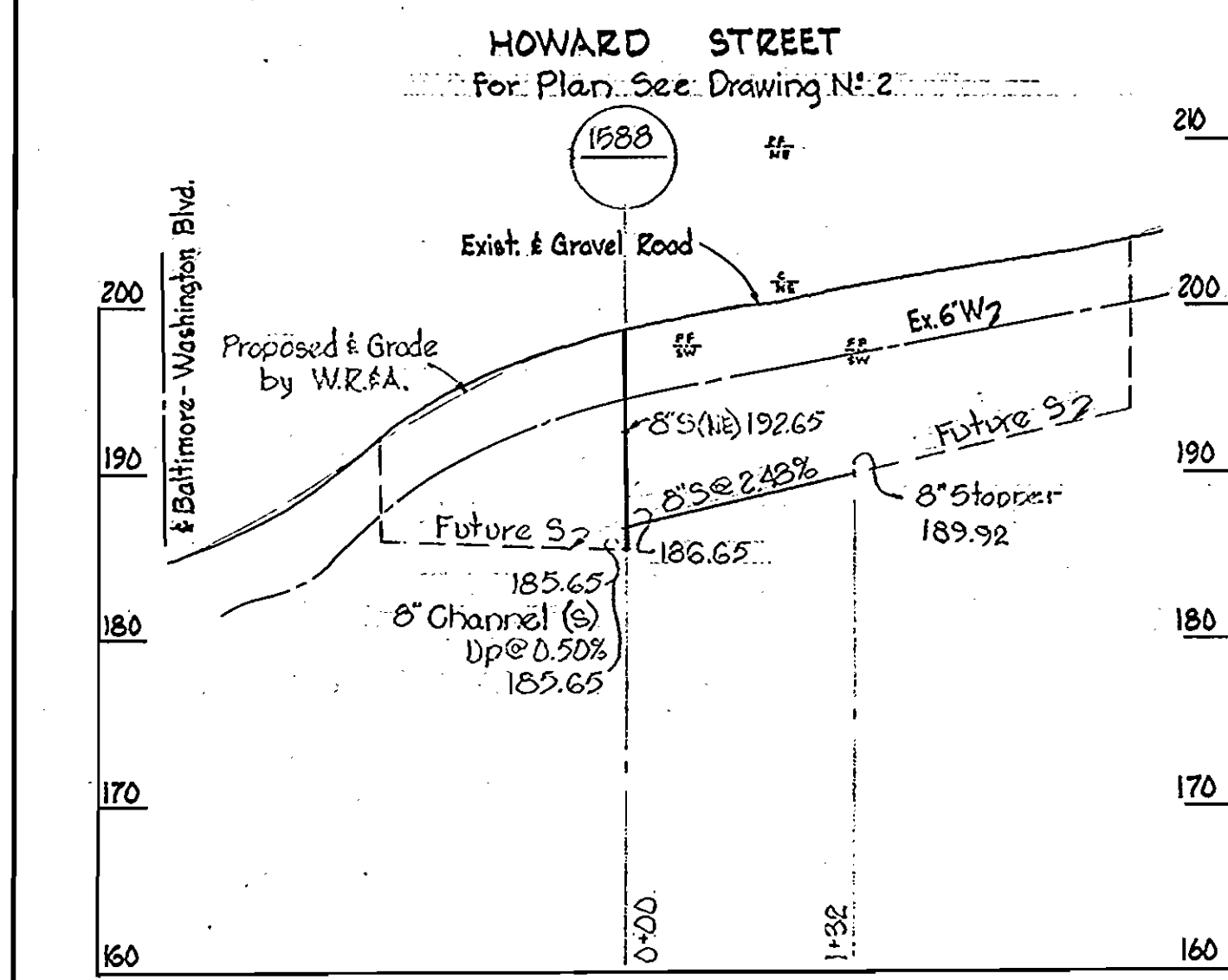
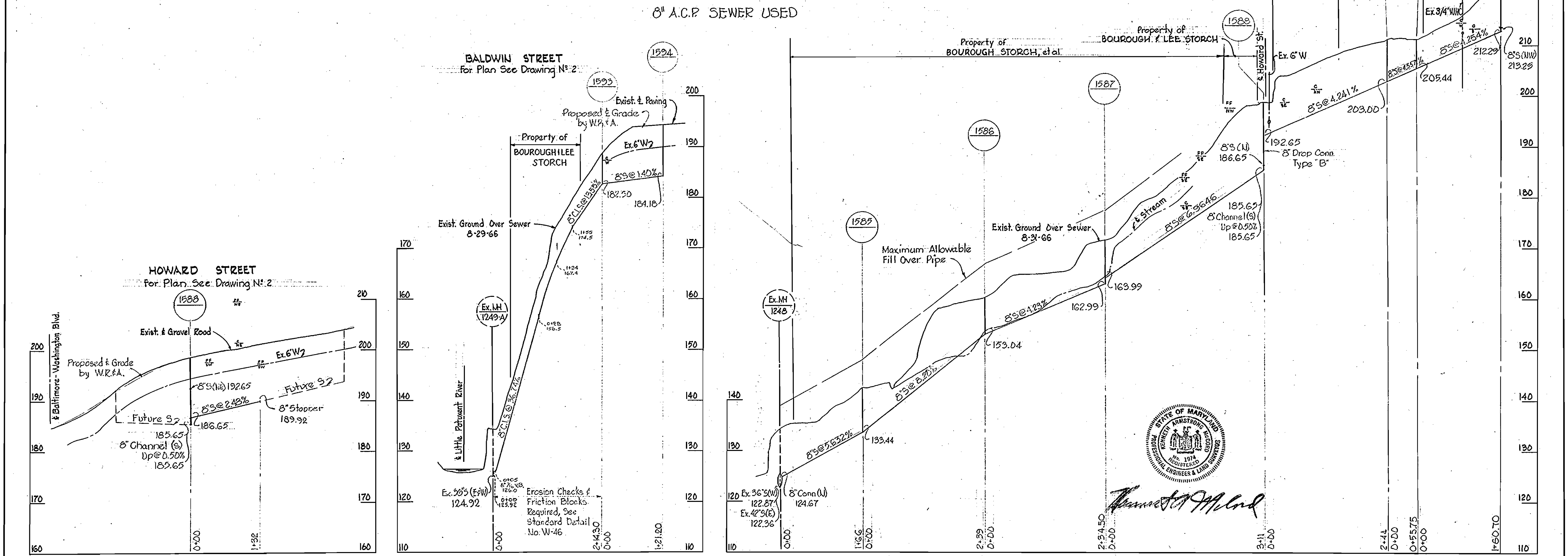
| | | | | | |
|--|---|--|----------------------------|---|--|
| WHITMAN, REQUARDT & ASSOCIATES ENGINEERS 1304 ST. PAUL ST. BALTIMORE, MARYLAND | HOWARD COUNTY METROPOLITAN COMMISSION DATE 12-20-66 <i>W.D. Talbot</i> CHIEF ENGINEER | CONTRACT NO. 128-S ADDITIONAL CONSTRUCTION | PLAN OF SEWER MAINS | ELECTION DISTRICT GUILFORD NO. 6 AS BUILT | DRAWING NO. 8A OF 12 SCALE 1"=50' 11 JUNE '68 FB 3536 |
|--|---|--|----------------------------|---|--|

W. O. 5562-2

WS 128-5/9



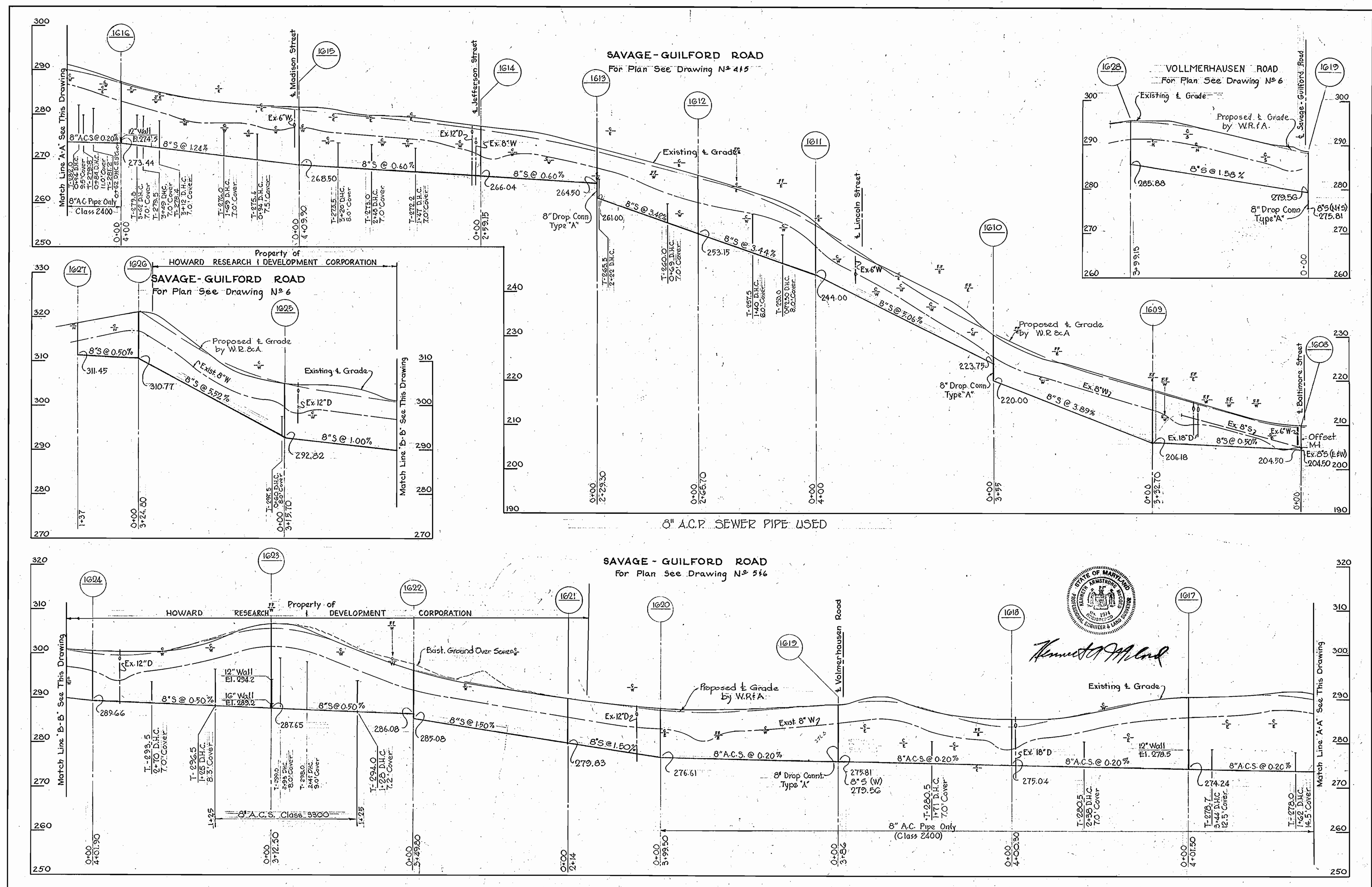
8" A.C.P. SEWER USED



Handwritten signature

| | | | | | |
|---|--|--------------------|-------------------------|--|---|
| WHITMAN, REQUARDT & ASSOCIATES ENGINEERS 1304 ST. PAUL ST. BALTIMORE, MARYLAND | HOWARD COUNTY METROPOLITAN COMMISSION DATE 12-20-66 <i>W. O. Folbert</i> CHIEF ENGINEER | CONTRACT NO. 128-S | PROFILES OF SEWER MAINS | ELECTION DISTRICT GUILFORD NO. 6 AS BUILT | DRAWING NO. 9 OF 12 SCALE H-1"=100' V-1"=10' Contract No. 128-5 |
|---|--|--------------------|-------------------------|--|---|

WS 128-5/10



Kenneth A. Alford

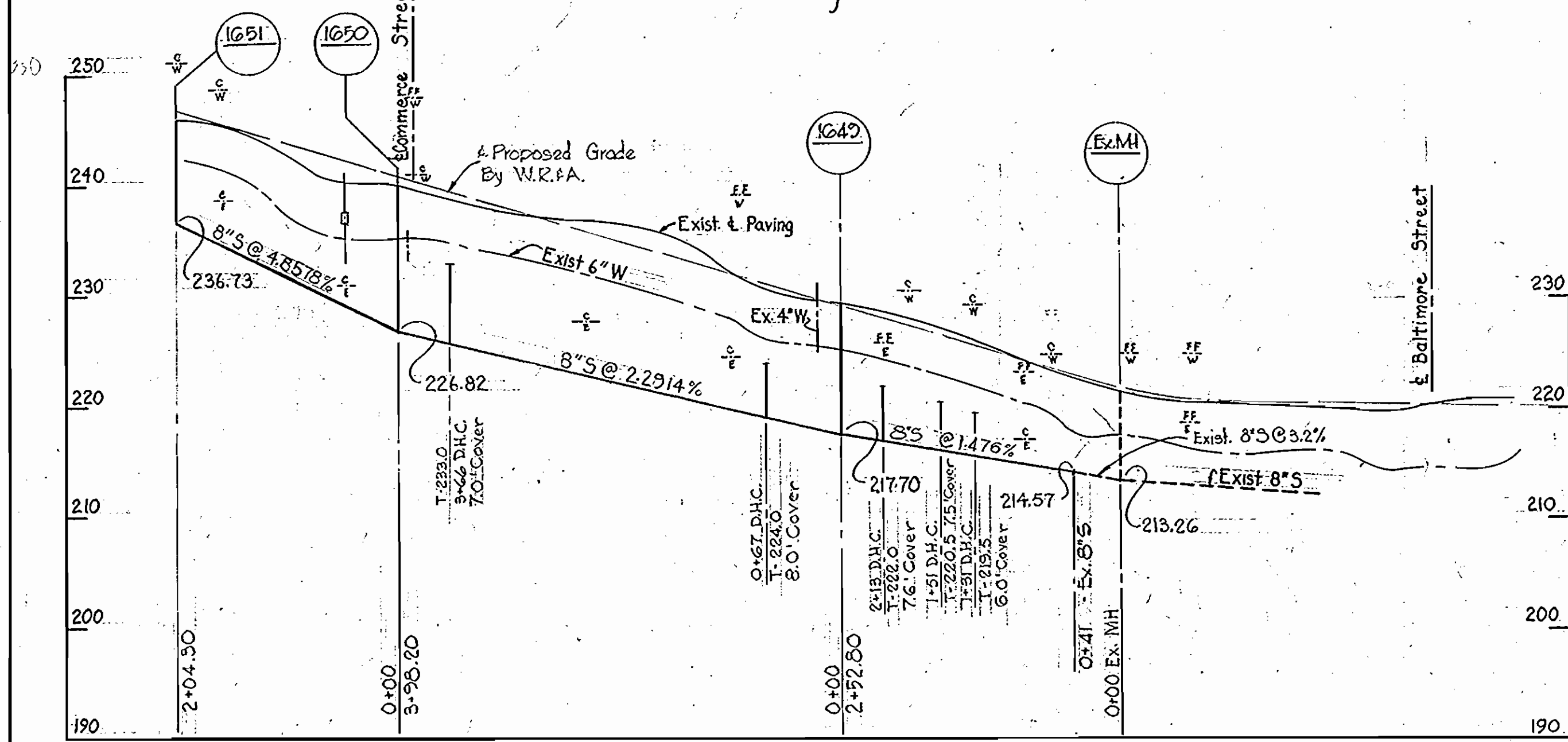
| | | | | | |
|---|---|--------------------|----------------------------|-------------------------------------|---|
| WHITMAN, REQUARDT & ASSOCIATES ENGINEERS 1304 ST. PAUL ST. BALTIMORE, MARYLAND | HOWARD COUNTY METROPOLITAN COMMISSION DATE 12-20-66 <i>W. O. Libeck</i> CHIEF ENGINEER | CONTRACT NO. 128-5 | PROFILES OF SEWER MAINS | ELECTION DISTRICT GUILFORD NO. 6 | DRAWING NO. 10 OF 12 SCALE H-1"=100' V-1"=10' |
|---|---|--------------------|----------------------------|-------------------------------------|---|

W. O. 5562-2

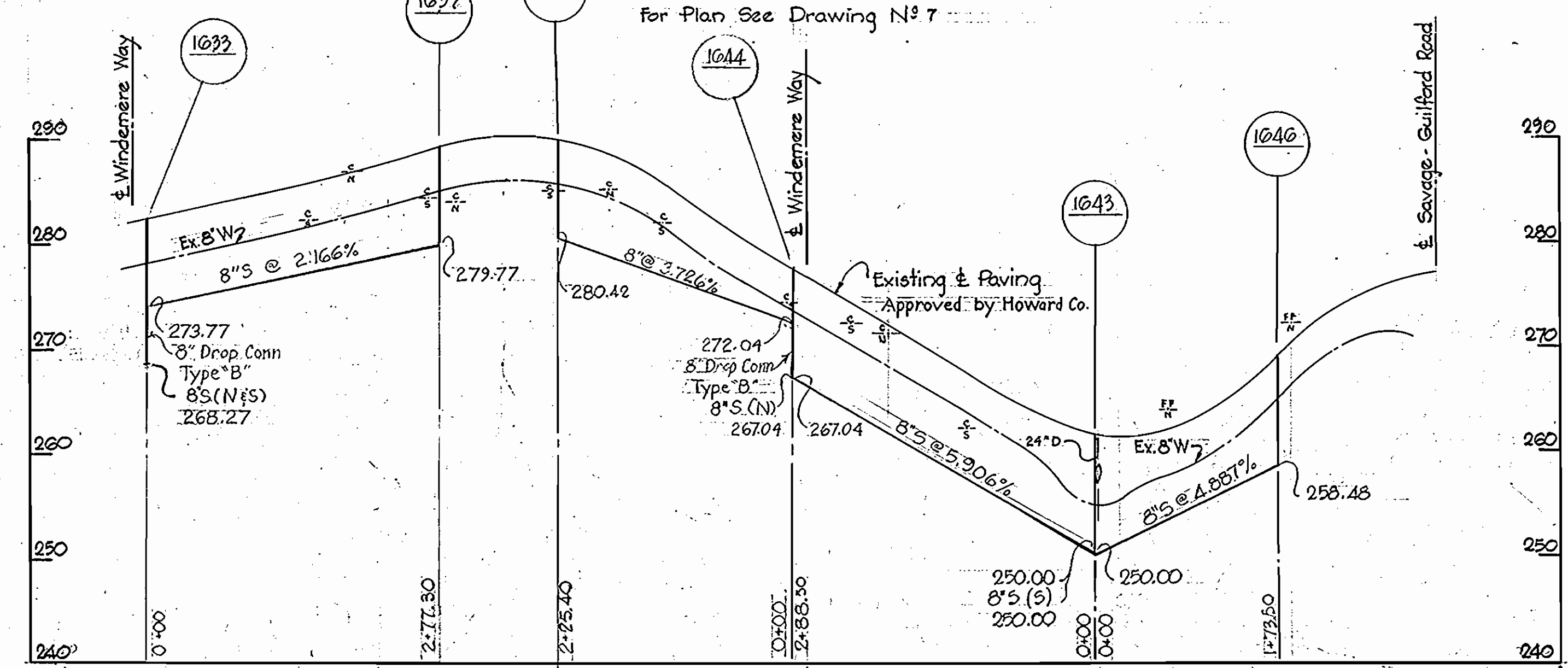
AS BUILT

11 JUNE '68

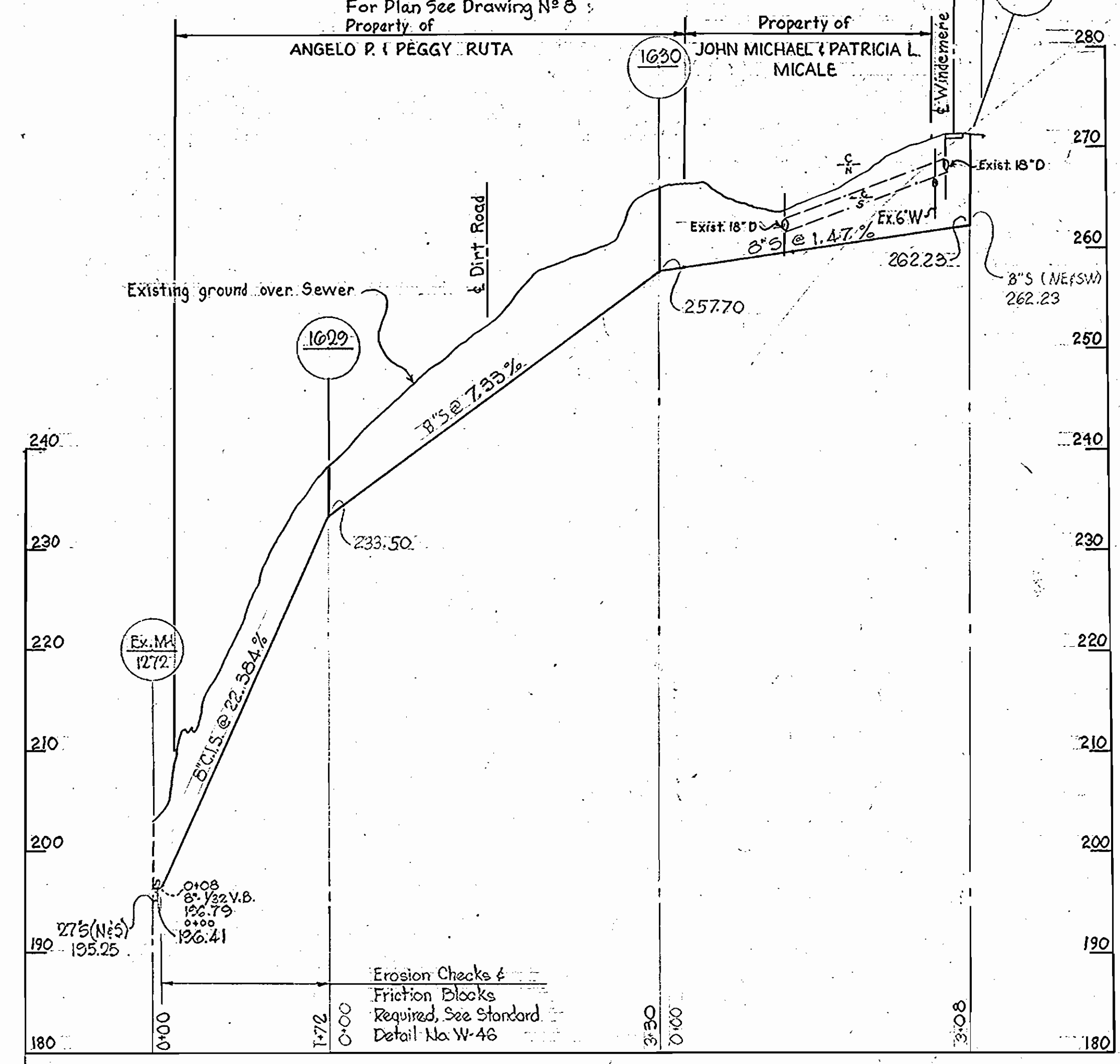
COMMERCIAL STREET
For Plan See Drawing N^o 8



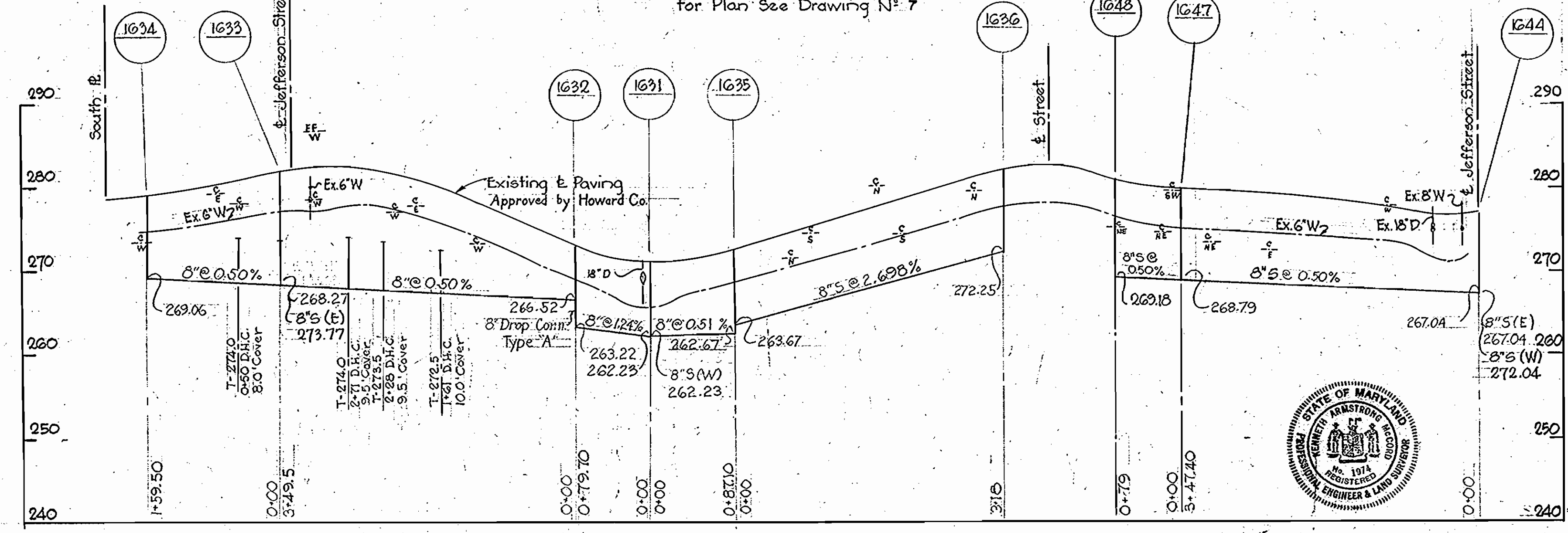
JEFFERSON STREET
For Plan See Drawing N^o 7



OUTFALL SEWER FROM WINDEMERE ACRES
For Plan See Drawing N^o 8



WINDEMERE WAY
For Plan See Drawing N^o 7



Kenneth M. Lord

Contract N^o 128-S

WHITMAN, REQUARDT & ASSOCIATES
ENGINEERS
1304 ST. PAUL ST.
BALTIMORE, MARYLAND

HOWARD COUNTY METROPOLITAN COMMISSION
DATE 12-20-66
W. O. Smith
CHIEF ENGINEER

CONTRACT NO. 128-S

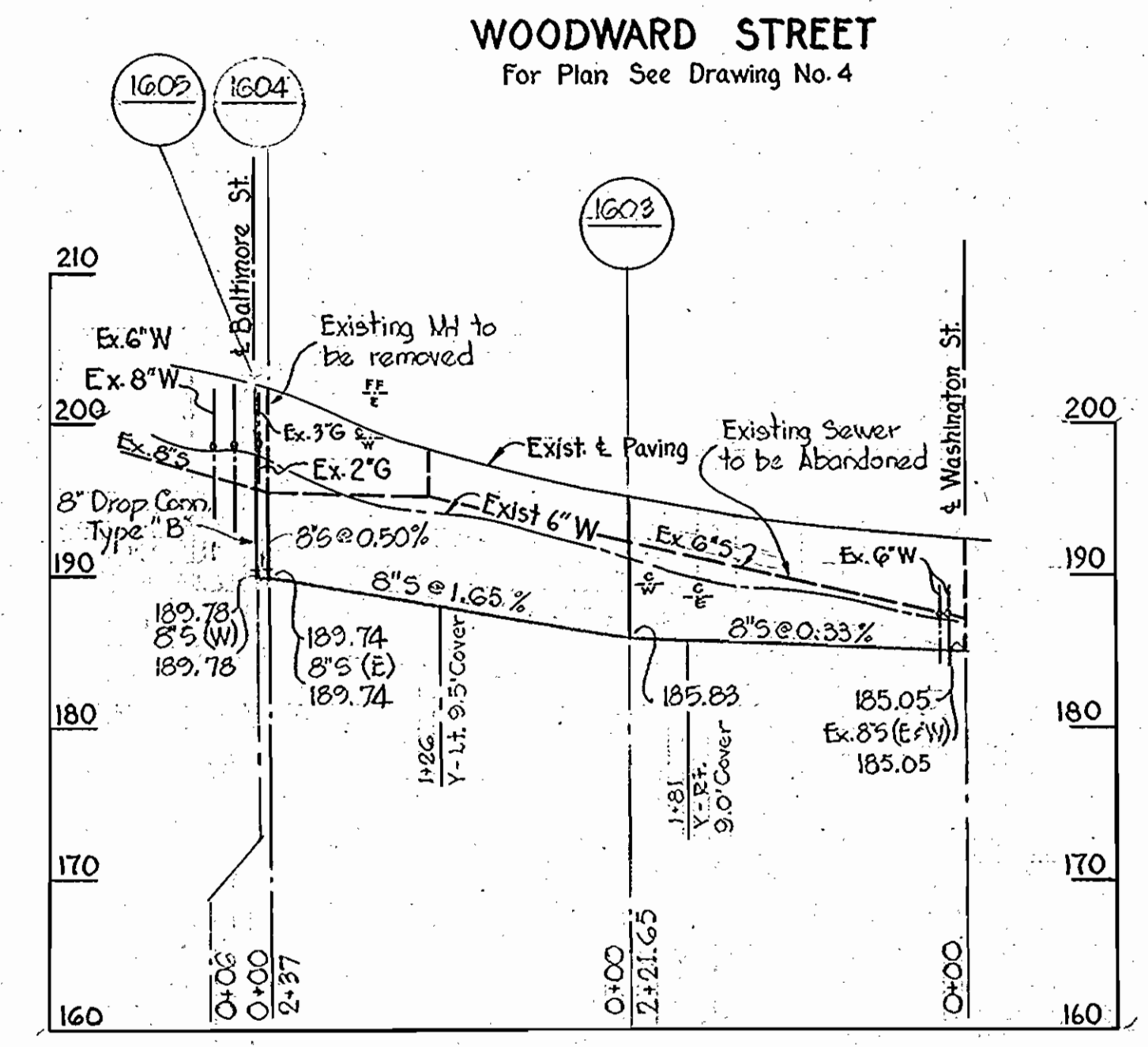
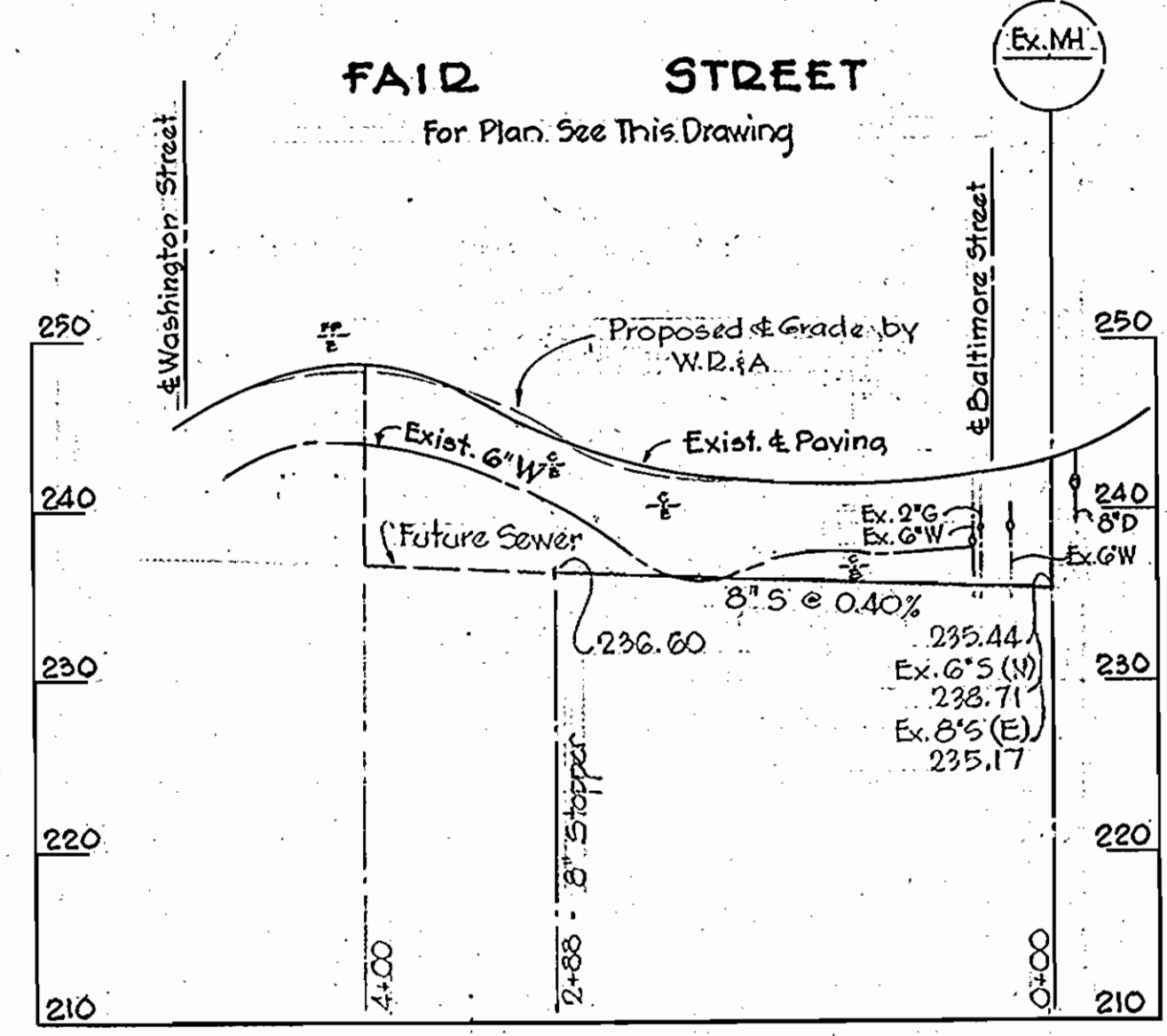
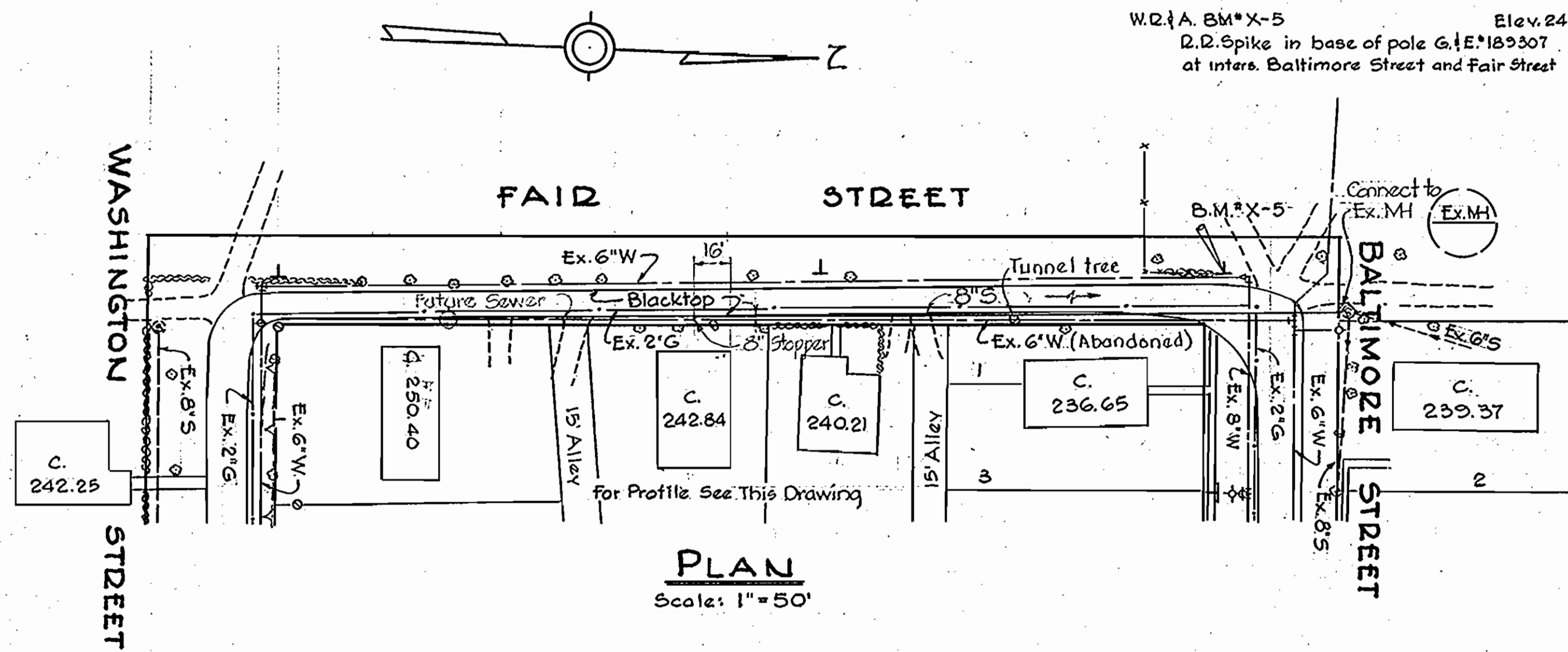
PROFILES OF
SEWER MAINS

ELECTION DISTRICT
GUILFORD NO. 6

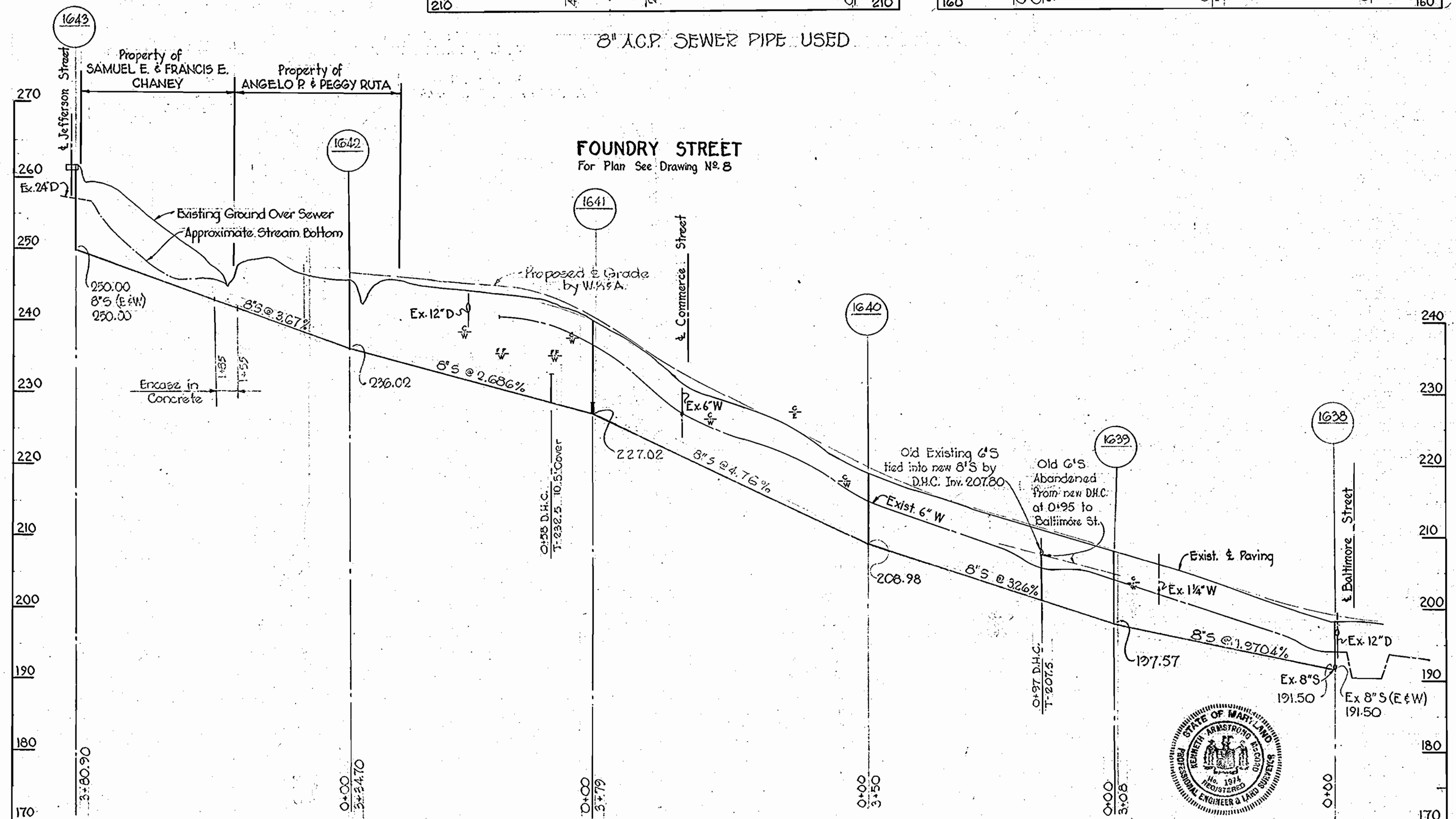
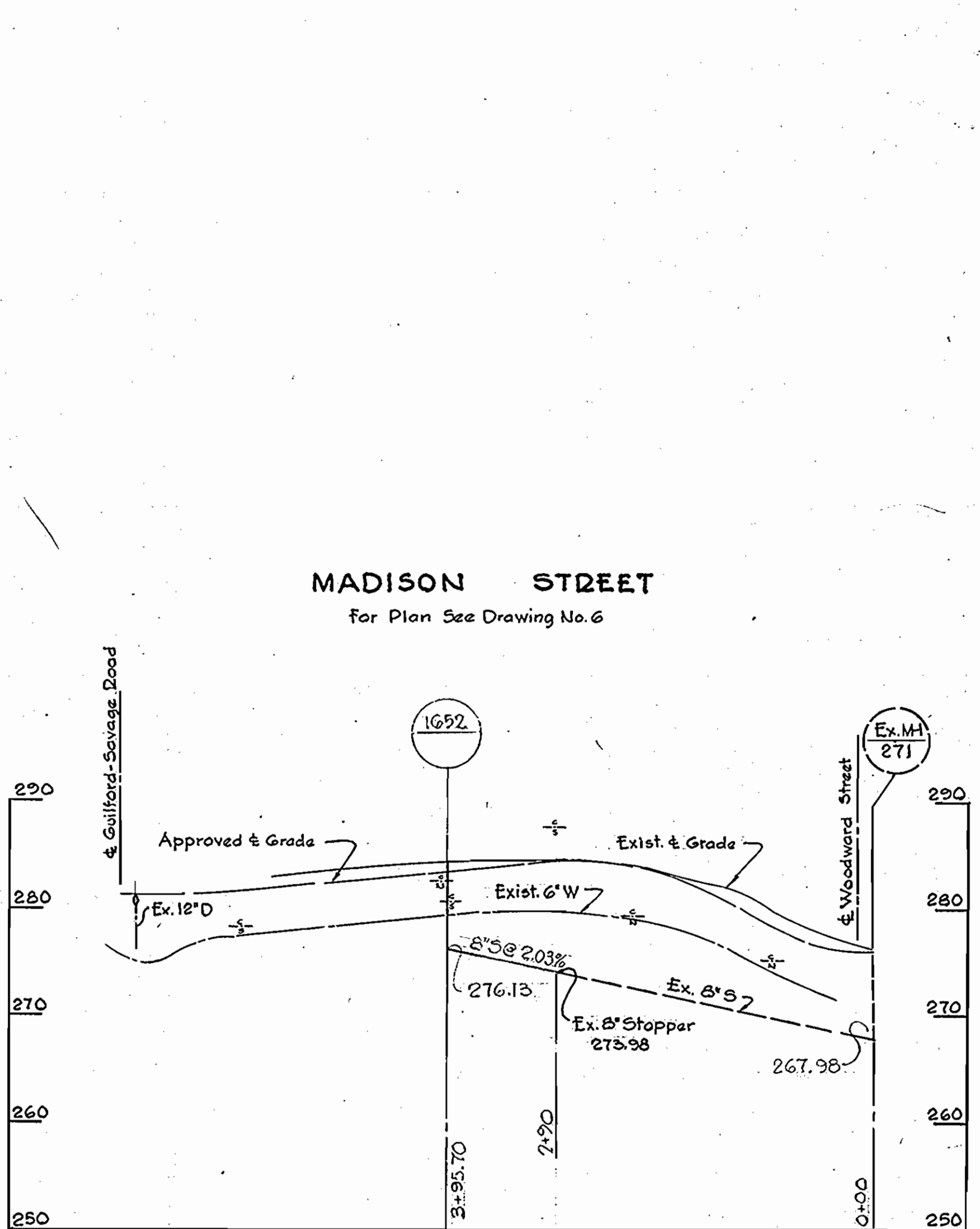
DRAWING NO. 11 OF 12
SCALE H-1"=100' V-1"=10'

AS SHOWN

WS 128-S/11



8" A.C.P. SEWER PIPE USED



PROFILES
Scale: H.: 1"=100'
V.: 1"=10'



Howard M. Lind

WHITMAN, REQUARDT & ASSOCIATES
ENGINEERS
1304 ST. PAUL ST.
BALTIMORE, MARYLAND

HOWARD COUNTY METROPOLITAN COMMISSION
12-20-66
DATE

CONTRACT NO. 128-S

PLAN AND PROFILES OF
SEWER MAINS

ELECTION DISTRICT
GUILFORD NO. 6

DRAWING NO. 12 OF 12
SCALE AS SHOWN

Contract No. 128-5

WS 1285/12